

MP3 DIGITAL AUDIO FM TUNER

Plays
Windows
Media™

REC
VOICE
recorder

Instruction Manual

PORTABLE STORAGE DEVICE
& MULTI - CODEC JUKE BOX

Model iHP-140

iRiver

Model iHP-140

iRiver



Firmware Upgradable

Thank you for your purchase.
Please read this manual carefully
before using your new player.

<http://www.iRiverAmerica.com>

<http://www.iRiverAmerica.com>

THIS DEVICE COMPLIES WITH PART 15 OF THE FCC RULES. OPERATION IS SUBJECT TO THE FOLLOWING TWO CONDITIONS:
(1) THIS DEVICE MAY NOT CAUSE HARMFUL INTERFERENCE, AND
(2) THIS DEVICE MUST ACCEPT ANY INTERFERENCE RECEIVED, INCLUDING INTERFERENCE THAT MAY CAUSE UNDESIRE OPERATION.

Note : This equipment has been tested and found to comply with the limits for a Class B digital device, pursuant to part 15 of the FCC Rules. These limits are designed to provide reasonable protection against harmful interference in a residential installation.

This equipment generates, uses and can radiate radio frequency energy and, if not installed and used in accordance with the instructions, may cause harmful interference to radio communications. However, there is no guarantee that interference will not occur in a particular installation. If this equipment does cause harmful interference to radio or television reception, which can be determined by turning the equipment off and on, the user is encouraged to try to correct the interference by one or more of the following measures :

- Reorient or relocate the receiving antenna.
- Increase the separation between the equipment and receiver.
- Connect the equipment into an outlet on a circuit different from that to which the receiver is connected.
- Consult the dealer or an experienced radio/TV technician for help.

NOTE: THE MANUFACTURER IS NOT RESPONSIBLE FOR ANY RADIO OR TV INTERFERENCE CAUSED BY UNAUTHORIZED MODIFICATIONS TO THIS EQUIPMENT. SUCH MODIFICATIONS COULD VOID THE USER'S AUTHORITY TO OPERATE THE EQUIPMENT.

- **Portable Storage Device (40GB)**
The iHP can be used as a portable storage device to transfer files to any PC.
- **USB 2.0 is supported**
The iHP supports USB 2.0 with maximum transfer speed of 480 Mbit/Sec.
- **Multi-Codec Player**
Supports MP3, Ogg Vorbis, WMA, ASF, and WAV formats as a multi-Codec player.
The iHP supports WAV types of 11/22/44/48KHz, 16bit, Mono/Stereo.
- **Firmware Upgrade**
Provides the latest updated features via firmware upgrade.
- **Graphic LCD supporting Multiple Languages**
The iHP comes with a graphic LCD which can support multiple languages, including: English, French, Spanish, German, Italian, other alphabet-oriented fonts, Korean, Japanese (Katakana, Hiragana, Kanji), Chinese (Traditional, Simplified) and others. A total of 38 languages are supported.
- **FM Tuner**
Auto scanning and station memory functions make it easy for you to enjoy listening to the FM Radio.
- **Supports 6 Equalizer Patterns**
Normal, Rock, Jazz, Classic, Ultra Bass, User EQ
- **This player supports 3D Surround Sound developed by SRS Lab.**
- **Easy Navigation**
The simple navigation with tree configuration makes it easy to find or save any song.
- **iHP-140 can recognize up to 2000 folders and 9999 files.**
- **Graphic User Interface Menu**
- **Voice recording and recording (Line-In/Optical In) from an external audio source is supported.**
When voice recording, recording level is automatically controlled at voice recording mode.
- **Line-Out / Optical-Out**

- **The iHP-140 can not be formatted using the Disc Management Utility or the Format Commander Utility in Windows 2000 and Windows XP since 32GB is the maximum HDD size enabling to be formatted.**
Because this is not supported at Windows O.S. and the player is not malfunction. You can still use a HDD which is formatted as FAT 32 system on Windows 98 SE or ME.
- **The iHP-140 can be formatted using Windows Explorer in Windows 98 SE and Me.**
- **The iHP-140 can be formatted using the HDD Management Utility in Windows 2000 and XP.**

The information, artwork, text, video, audio, pictures, software and other intellectual property are protected by copyright and international laws.

You may not reproduce, distribute, publicly perform, publicly display, modify or create derivative works of the intellectual property, unless authorized by the appropriate copyright owner(s). iRiver does not encourage any of our customers to use copy-righted Intellectual property illegally by using this product.

iRiver Limited does not assume any responsibility for errors or omissions in this document or make any commitment to update the information contained herein. iRiver is a registered trademark of iRiver Limited in the Republic of Korea and/or other countries and is used under license.

All other brand and product names are trademarks of their respective companies or organization.

All other product names may be trademarks of the companies with which they are associated.

©1999~2003 iRiver Limited, All rights reserved.

▶ Microsoft Windows Media and the Windows logo are trademarks or registered trademarks of Microsoft Corporation in the United States and /or other countries.

1. Locating the Controls

Front View, Side View..... 5
 Up/ Down Side, LCD Window..... 6
 Remote Control..... 7

2. Getting started

Using AC Power Adapter..... 8
 Software Installation..... 9
 Connecting the iHP to the Host PC..... 10
 Installing the iHP Device Driver..... 11
 Using as a Portable Storage Device..... 12
 Disconnecting the iHP to the Host PC..... 13
 Listening to Music..... 14~15
 Basic Operation..... 16~19

3. Useful Features

Navigation Mode / Menu / Mode..... 19
 Playback Mode..... 20
 Navigation..... 21~23
 Upgrading DB..... 24
 Adding DB..... 25
 Using TEXT Files..... 26~29
 Operating the FM Tuner..... 30~32
 Recording..... 33~35
 Playback Mode..... 36
 EQ/SRS..... 37
 Menu..... 38~46
 Using Winamp Playlist..... 47~48
 Firmware Upgrade/Homepage..... 49

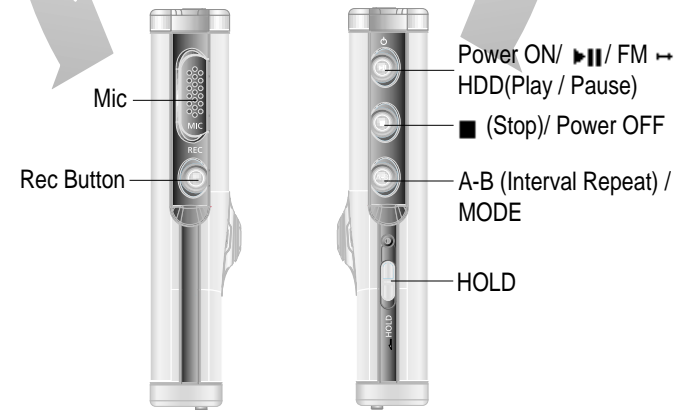
4. Additional Information

Reference..... 50
 Precautions..... 51
 Trouble Shooting..... 52
 Accessories..... 53
 Product Specifications..... 54
 Regulatory information..... 55

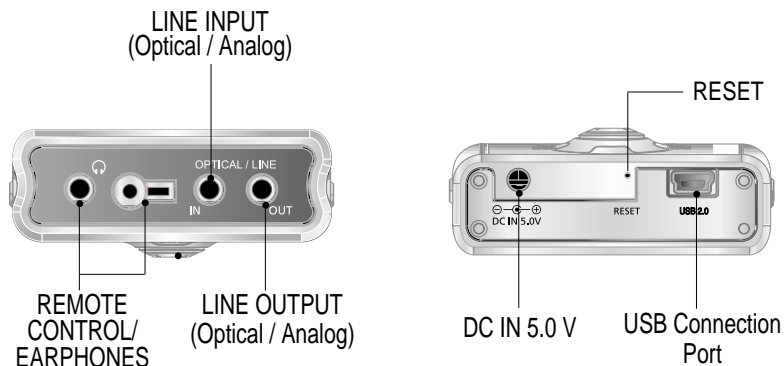
FRONT VIEW



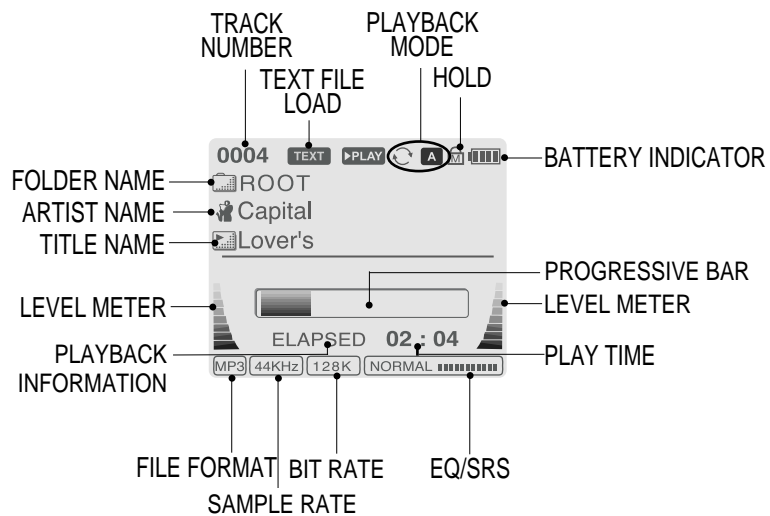
SIDE VIEW



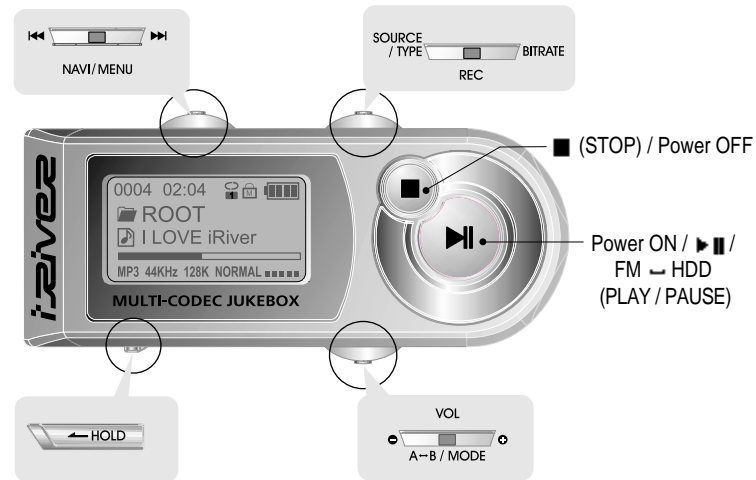
UP/ DOWN SIDE



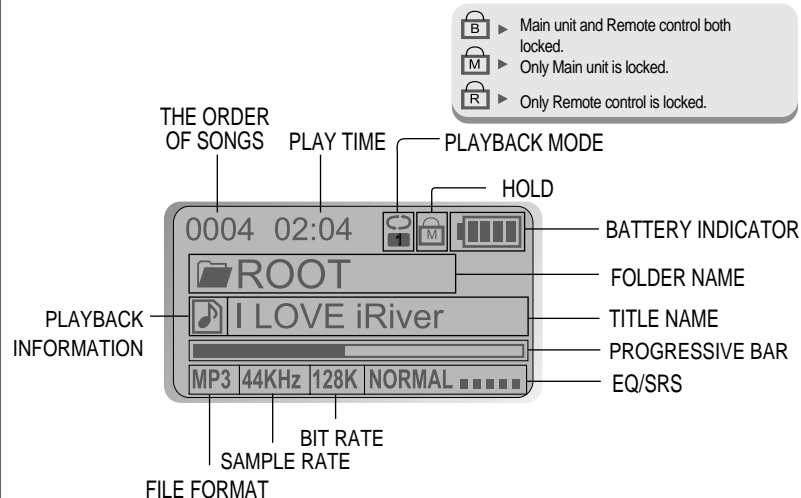
LCD WINDOW



REMOTE CONTROL



LCD WINDOW (REMOTE CONTROL)



USING AC POWER ADAPTER

- 1 Use only the AC Power Adapter supplied with the player.
The AC operating voltage of this player is 100~240V, 50~60Hz.
- 2 Connect the adapter to the 5.0V DC jack on the player and into an AC outlet.



RECHARGING METHOD

- The player will charge automatically when the AC adapter is connected to the player.
- When fully charged, charge indicator light turns off.

Charging : Approx. 3 hours (At full discharge)

Discharging (Playback time) : Approx. 16 hours (At full charge)

* Playtime is measured under playback of MP3 128Kbps at full charge.

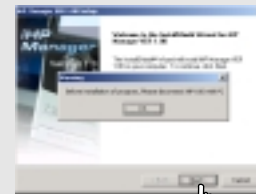
SOFTWARE INSTALLATION

Windows ME, Windows 2000 and Windows XP will recognize the iHP as a USB drive automatically and you can use the player with out installing iHP Manager. For Windows 98 SE users, the iHP Manager must be installed for the computer to recognize the player. All users must install iHP Manager to use the Database function.

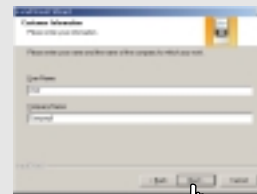
- 1 Insert the installation CD in the PC. Locate and execute the file "iHP-100Manager 1.10.exe". The installation screen will appear.



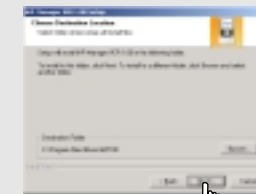
- 2 If the player has been connected to the PC, disconnect it. Click "OK" to install the installation program.



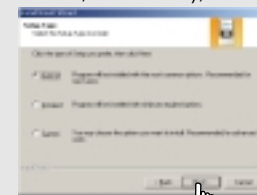
- 3 Enter user information, click "Next".



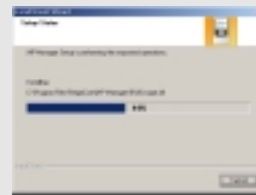
- 4 Select installation folder, click "Next".



- 5 Select installation type (Typical, Minimal, or Custom), click "Next".



- 6 Installation is progressing.



- 7 Click "Finish".
The installation is completed.

Note: the iHP Manager software will not install an icon on the computer desktop and it does not have a user interface screen. iHP Manager adds the ability to create the DB file as described on page 24."

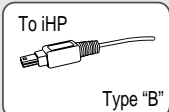
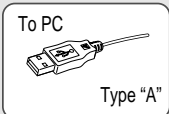
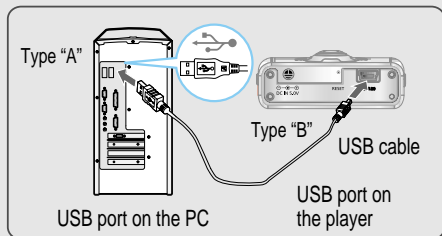


TO CONNECT THE IHP TO THE HOST PC

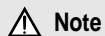
- 1 Click ▶ || to turn on the player.



- 2 Connect the USB cable to the player and the host PC.



- 3 Windows XP and Windows 2000 will display a "Device Attached" icon.



Note

Windows may ask to install a driver for the iHP. Please follow the provided driver installation guide on the following page.

- 4 Once installed, open Windows Explorer and an additional drive should be listed called "iHP-140".



TO INSTALL THE IHP DEVICE DRIVER

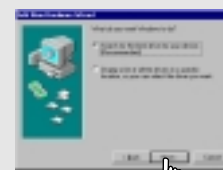
(Note: Windows 98SE and Windows Me only.)

Complete the driver installation after installing the iHP Manager software.

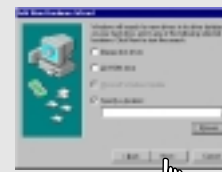
- 1 Connect the player to your PC, Windows will display the "Add New Hardware Wizard". Click Next.



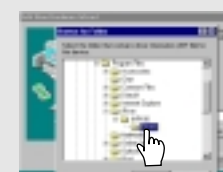
- 2 Chose "Search for the best driver for your device (Recommended)". Click Next.



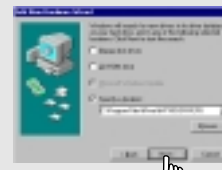
- 3 Place a checkmark next to "Specify a location" and click Browse.



- 4 Locate the following path on your computer. C:\Program Files\iRiver\iHP 100\drivers, click "OK".



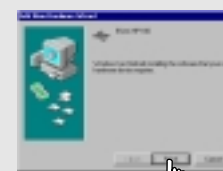
- 5 Once the path has been located, Click "Next".



- 6 Click "Next"



- 7 Click "Finish"
The installation of the Device Driver is complete.



TO DISCONNECT THE PLAYER FROM THE HOST PC

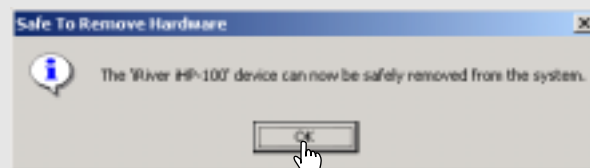
- 1 Click the 'Safely Remove Hardware' icon in the System Tray.



- 2 Click "Stop iRiver iHP-100-Driver(X)" or "Safely Remove TOSHIBA MK1—3GAL USB Disk - Drive(X):". (Where X is the drive letter assigned to the iHP)



- 3 Click 'OK' after confirming the "Safe To Remove Hardware" message.



- 4 Disconnect the USB cable between the iHP and host PC.

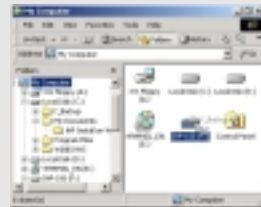
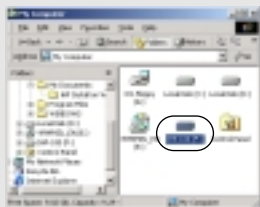
⚠ Caution

- Do not disconnect the player while the drive is in use. Complete any file copying or DB creation activity before attempting to disconnect the iHP from your PC.

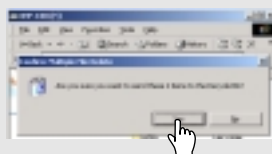
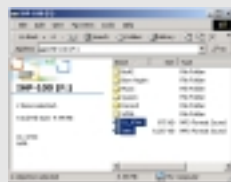
TO USE AS A PORTABLE STORAGE DEVICE

If the player is not connected to the host PC, connect it to the host PC. (Refer to page 10)

- 1 The player will show up as a new drive in Windows Explorer.
- 2 Click and Drag files from the PC to the iHP player.



- 3 To delete files or folders from the iHP, select the files (folders) to be deleted and press "Delete" on the keyboard. Click "Yes" when asked to confirm the delete.



The iHP operates just like an additional hard drive in Windows Explorer. Files can be copied, deleted, etc.

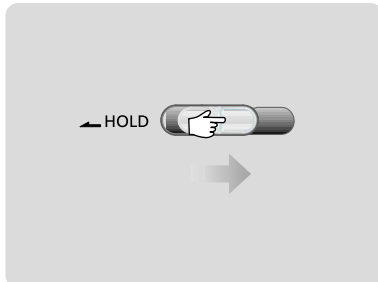
⚠ Note

- When the iHP is attached to a computer for an extended period of time, be sure to plug in the AC adapter. Low batteries can prevent the proper functioning of the iHP.

1 Connect the headphones and remote control as shown below.



2 Put the HOLD switch to "OFF".

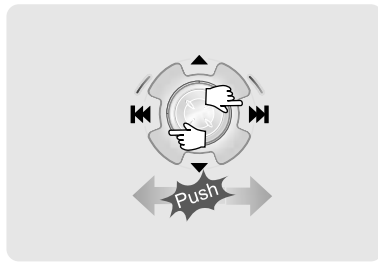


3 Press the PLAY/STOP button to turn on the player. Press it again to play.



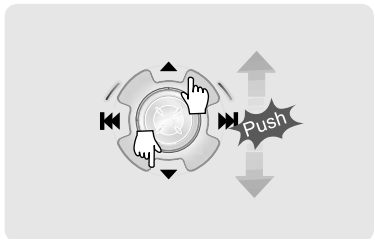
4 To select music

⏮: To select previous track
⏭: To select next track



5 To adjust the volume

▲|+|: To increase volume
▼|-|: To decrease volume



NOTE

- When "Hold" is ON, the buttons on the player will not function.
- When the player is stopped, it will automatically shut off according to the "STOP POWER OFF" setting (Refer to page 43).

■ Power ON



■ To fast forward



■ To play / Pause



■ To fast reverse



■ To stop



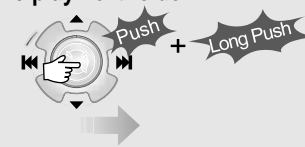
■ To play previous track



■ To play next track



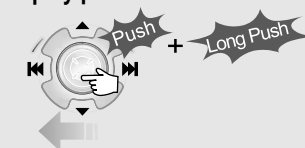
■ To play next folder



■ To turn off the player



■ To play previous folder



■ File playback ↔ FM receiving



File Format displayed as below

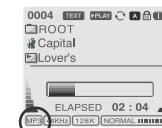
MP3 ▶ MP3

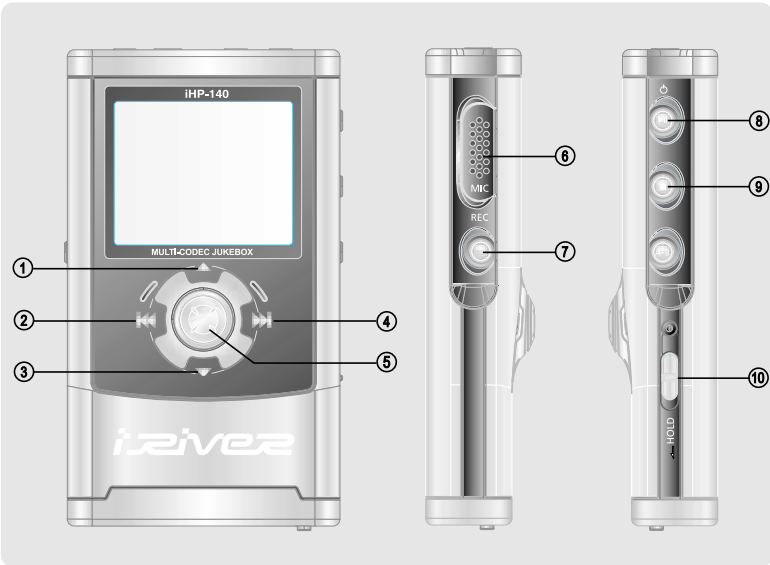
WMA ▶ WMA

OGG ▶ OGG

WAV ▶ WAV

ASF ▶ ASF





● **To activate Navigation**



● **To activate Menu**



1. To increase volume.
 2. To select the previous track or FM station.
 3. To increase volume.
 4. To select the next track or FM station.
 5. To select NAVI/MENU function.
 6. Internal Microphone
 7. To change to record standby mode or start recording.
 8. To start or pause playback to change FM ↔ HDD.
 9. To stop playback or recording or turn off.
 10. HOLD: Enable or disable HOLD function.
- Buttons do not work when HOLD is enabled.

BASIC OPERATION



■ **To adjust the volume**

Press + on volume button to increase volume and press – on button to decrease volume.



File playback ↔ FM receiving



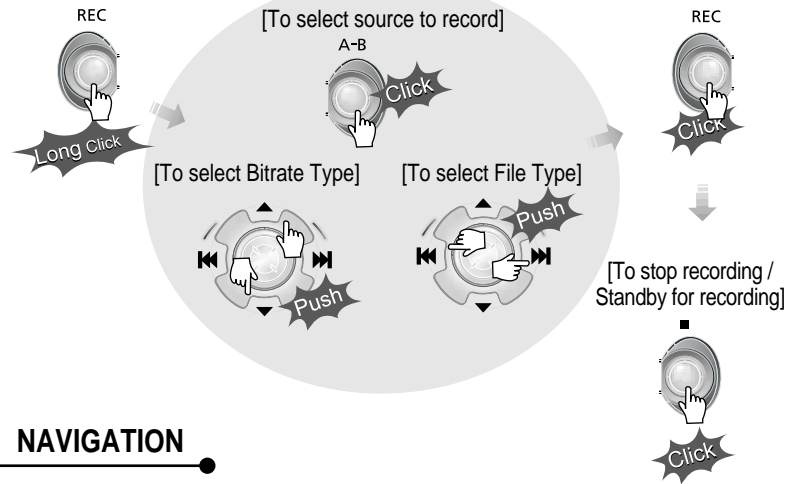
(Refer to page 30)

Selecting FM Mode when listening FM Stereo ↔ Mono



■ **To Record**

[Record standby]



NAVIGATION

■ Press NAVI/MENU button and find the desired track by pressing the VOL + or VOL – button, ⏪ or ⏩, NAVI/MENU button.