



PNM
Pen & Mouse

ISV CO., LTD

102-705 pucheontechnopark102-705 pucheontechnopark, 364, samjung-dong,
o jung-gu, Kyoung-ki Do, korea
Tel : 82-32-234-0705 / Fax : 82-32-327-1125
Website : www.penandmouse.co.kr



Important Safety Instructions

When using your pen mouse equipment, basic safety precautions should always be followed to reduce the risk of fire, electric shock, and injury to persons, including the following:

1. Read and understand all instructions.
2. Do not use liquid cleaners or aerosol cleaners. Use a damp cloth for cleaning.
3. Do not use this product near water, for example, near a bathtub, washbowl, kitchen sink, or laundry tub, in a wet basement or near a swimming pool.
4. Do not place this product on an unstable cart, stand, or table. The product may fall, causing serious damage to the product.
5. To reduce the risk of electric shock, do not disassemble this product, but take it to a qualified service contractor when some service or repair work is required. Opening or removing covers may expose you to dangerous voltages or other risks. Incorrect reassembly can cause electric shock when the appliance is subsequently used.
7. Unplug this product from the power source and refer servicing to qualified service personnel under the following conditions:
 - A. If liquid has been spilled into the product.
 - If the product has been exposed to rain or water.
 - D. If the product does not operate normally by following the operating instructions, Adjust only those controls that are covered by the operating instructions. Improper
 - E. Adjustments of other controls may result in damage and will often require extensive work by a qualified technician to restore the product to normal operation.
 - F. If the product has been dropped or the cabinet has been damaged.
 - G. If the product exhibits a distinctive change in performance.



FCC Notice

THIS DEVICE COMPLIES WITH PART 15 OF THE FCC RULES. OPERATION IS SUBJECT TO THE FOLLOWING TWO CONDITIONS:

- (1) THIS DEVICE MAY NOT CAUSE HARMFUL INTERFERENCE, AND
- (2) THIS DEVICE MUST ACCEPT ANY INTERFERENCE RECEIVED, INCLUDING INTERFERENCE THAT MAY CAUSE UNDESIRABLE OPERATION.

This equipment has been tested and found to comply with the limits for a Class B digital device, pursuant to part 15 of the FCC Rules. These limits are designed to provide reasonable protection against harmful interference in a residential installation. This equipment generates, uses and can radiate radio frequency energy and, if not installed and used in accordance with the instructions, may cause harmful interference to radio communication. However, there is no guarantee that interference will not occur in a particular installation. If this equipment does cause harmful interference to radio or television reception, which can be determined by turning the equipment off and on, the user is encouraged to try to correct the interference by one or more of the following measures :

- Reorient or relocate the receiving antenna.
- Increase the separation between the equipment and receiver.
- Connect the equipment into an outlet on a circuit different from that to which the receiver is connected.
- Consult the dealer of an experienced radio/TV technician for help.

NOTE : The manufacturer is not responsible for any radio or TV interference caused by unauthorized modifications to this equipment. Such modifications could void the user's authority to operate the equipment.



ISV CO., LTD

PNM
Pen & Mouse

102-705 pucheontechnopark102-705 pucheontechnopark, 364, samjung-dong,
o jung-gu, Kyoung-ki Do, korea
Tel : 82-32-234-0705 / Fax : 82-32-327-1125
Website : www.penandmouse.co.kr



NEW PEN and MOUSE Operating Guide.

Holding Pen and mouse



Installation of Receiver

1. Plug Receiver into USB Port with Computer
2. If Receiver is possible to use your computer, Receiver's LED is flashing one time.
3. Press LED light button (See Page 5)
Check that LED is turn on
IF LED is not on, your Receiver is reverse plugged

Docking Pen and mouse



Battery indicator

Low battery : Pen's Led is Flashing
While charging : Pen's Led is on
Full charge : Pen's Led is off

Power Save

1. Goes power down mode without any action during 30 second.
2. When Pen is docked with Receiver, goes in to power down
3. Press and Hold ① button (see page5) over 3Second, goes in to power down

When Pen and Receiver is docked, Automatically power is off.

To restart pen and memory mode, Press power button (See page 5) over 3 seconds



ISV CO., LTD

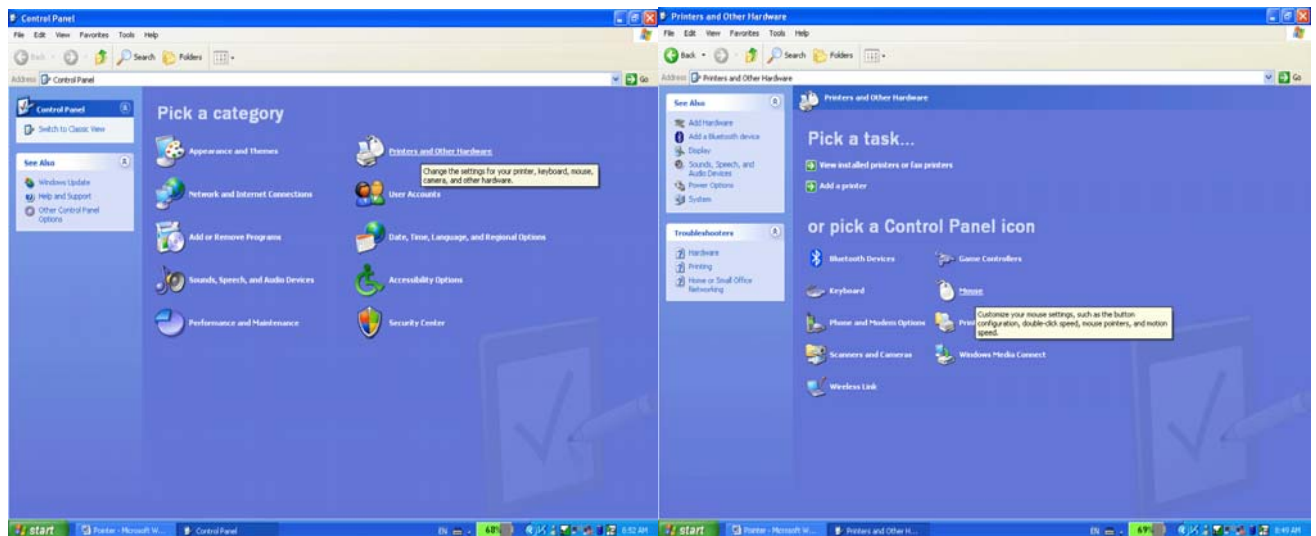
PNM
Pen & Mouse

102-705 pucheontechnopark102-705 pucheontechnopark, 364, samjung-dong,
o jung-gu, Kyoung-ki Do, korea
Tel : 82-32-234-0705 / Fax : 82-32-327-1125
Website : www.penandmouse.co.kr

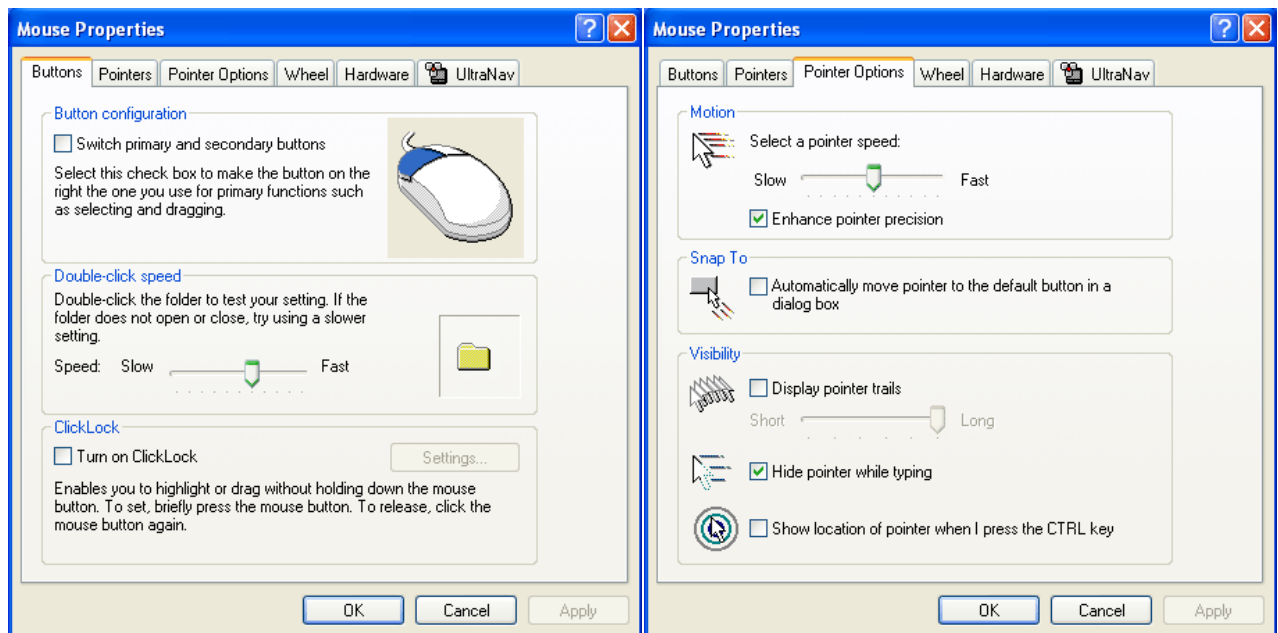


You can use Pen&Mouse as a natural pen, such as drawing a graph or write a text and sign. When Pen mode is selected, you can feel more comfortable and precisely drawing or writing by changing of setting of control panel. (This setting is only used in Windows XP version.)

1. Press **START** button → select **control panel** → select **Printers and other Hardware** → select **mouse**



2. It will appear on your **mouse properties** and select **pointer options** tab



You will see the “**Enhance pointer precision**” option.

Please cancel the checked indication to use more comfortable using the Pen and mouse

You can use penandmouse as a “Mouse” setting the acceleration faster on a mouse mode. you can adjust the acceleration to which you feel most comfortable with.



ISV CO., LTD

PNM
Pen & Mouse

102-705 pucheontechnopark102-705 pucheontechnopark, 364, samjung-dong,
o jung-gu, Kyoung-ki Do, korea
Tel : 82-32-234-0705 / Fax : 82-32-327-1125
Website : www.penandmouse.co.kr



NEW PEN and MOUSE Quick Guide 1

1. Pen and Mouse Usage

1-1 Separate Receiver and Pen

1-2 Plug Receiver into USB Port with Computer

1-3 If Receiver is possible to use your computer, Receiver's LED flashing one time

Power ON

Press ① button to re-power on
over 3 seconds

Registration

1. Press ① and ② button at a time,
Pen's LED is flashing continuously
2. Press Receiver's LED light button,
Receiver's LED is flashing one time.





PNM
Pen & Mouse

ISV CO., LTD

102-705 pucheontechnopark102-705 pucheontechnopark, 364, samjung-dong,
o jung-gu, Kyoung-ki Do, korea
Tel : 82-32-234-0705 / Fax : 82-32-327-1125
Website : www.penandmouse.co.kr



2. Memory pen Mode Usage

Enter Memory mode.

2-1 Press and hold ④ button over 3second

The pen's LED is flashing each 1 second

2-2 Press ② button, The LED is more fast flashing

2-3 write a text or drawing you want

(Tip : more convenient write during open paint Program)

2-4 press ② button to Save the data

The pen's LED is flashing each 1 second again

Play memorized data

2-5 Plug Receiver into USB Port with Computer

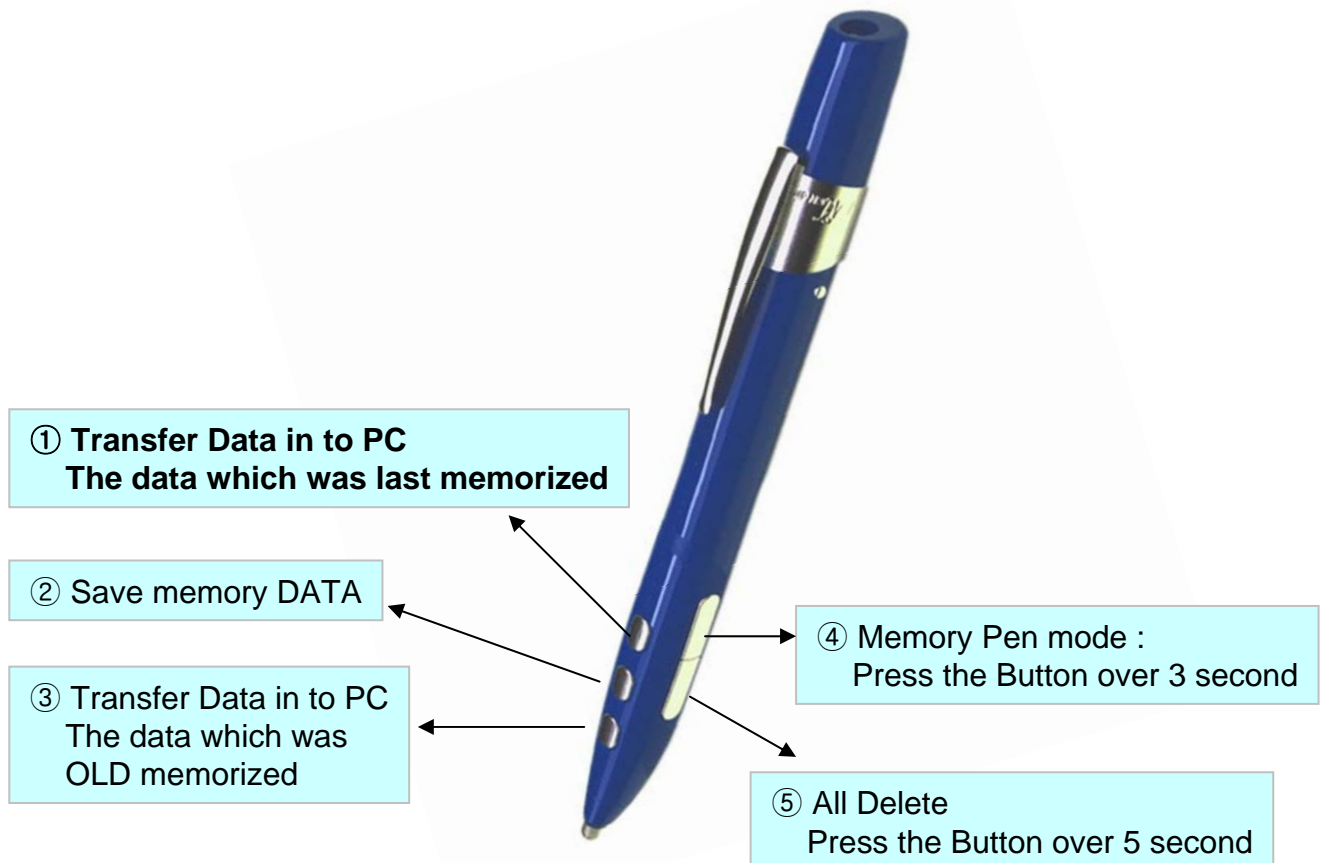
2-6 Press ① button to play data which was LAST memorized

2-7 Press ③ button to play data which was OLD memorized

Delete Memory data

2-8 Press ⑤ button to delete all data over 5 second

The pen's LED is off and Exit in memory mode.





ISV CO., LTD

PNM
Pen & Mouse

102-705 pucheontechnopark102-705 pucheontechnopark, 364, samjung-dong,
o jung-gu, Kyoung-ki Do, korea
Tel : 82-32-234-0705 / Fax : 82-32-327-1125
Website : www.penandmouse.co.kr



Usage New Pen and Mouse while Charging



Usage New Pen and Mouse without Charging cable



Registration

1. Press ① and ② button at a time,
Pen's LED is flashing continuously
2. Press Receiver's LED light button,
Receiver's LED is flashing one time.



ISV CO., LTD

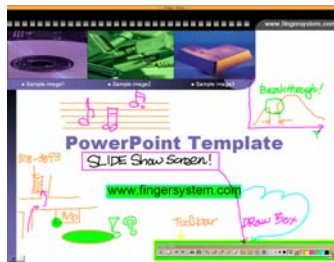
PNM
Pen & Mouse

102-705 pucheontechnopark102-705 pucheontechnopark, 364, samjung-dong,
o jung-gu, Kyoung-ki Do, korea
Tel : 82-32-234-0705 / Fax : 82-32-327-1125
Website : www.penandmouse.co.kr



PEN and MOUSE Quick Guide 2

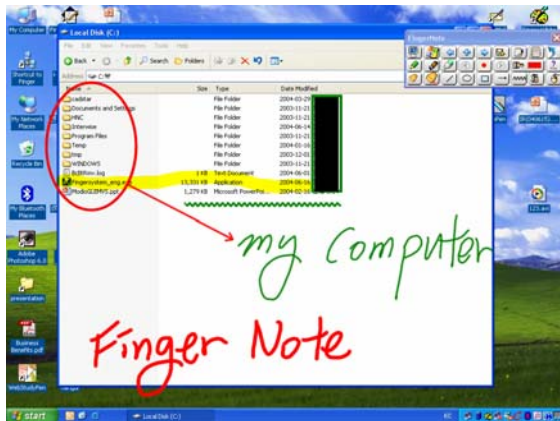
Example of practical Using Pen&Mouse



While you are doing a presentations with Microsoft PowerPoint™ you Can write your comment on the fly And grab the attention of audience.

Also, Press scroll button! while you stand on presentations, you can page up and down alone .

Drawing pictures using Pen&Mouse on Microsoft Paint



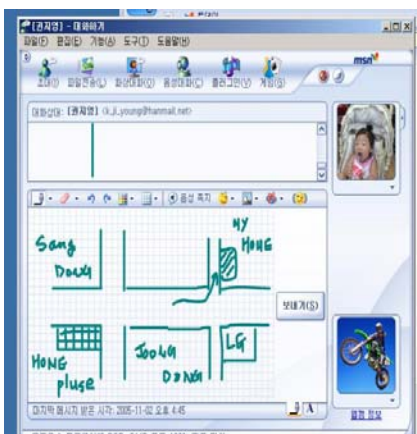
Presentations and Lectures

Finger Note : Create memos and highlight over any Program. This Program allows user to can open MS Powerpoint,word,excel by slides. Also, User can save slides with created memo (image file format). Especially, this program is very useful when presentation.

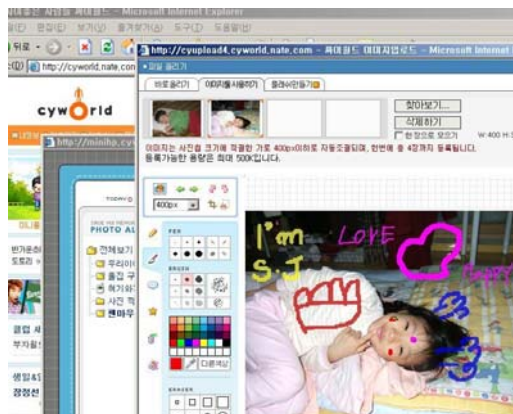
Please visit ISV CO.LTD. Website for more information and download Finger Note.
<http://www.penandmouse.com>

Using a Finger note (Bundled software)

Using a Msn messenger Graphic tool



Using a Mini homepage or blog graphic tool



Authorized by

Finger
FINGERSYSTEM INC.

Sign on your document