

ULTRA eXo Mouse

2.4GHz Bluetooth Wireless Mouse User Guide



The eXo mouse is designed for Windows OS (Window XP or higher), Mac OS and Linux OS. It features as a 2.4 GHz Bluetooth Wireless and a laser pointer which can be used for presentations.

Contact and Support

ULTRA Products
8300 West Flagler St. Suite #121-106
Miami, FL 33144
TEL : 1-888-222-5487
Website : www.ultraproducts.com

I. Setup Options:

Depending if you have a computer with a built-in Bluetooth® transceiver, there are two methods of connecting with the eXo Mouse:

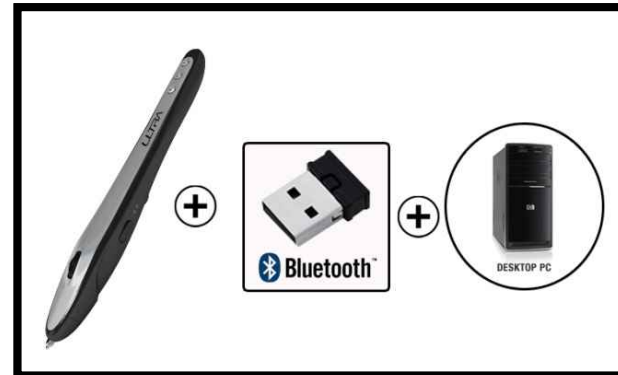
Transceiver –Free (PC & Mac)

This method requires a computer with built-in *Bluetooth®*.



Using the *Bluetooth®* USB Dongle Adaptor (PC Only)

For PCs without *Bluetooth®* connectivity, ULTRA includes a *Bluetooth®* USB dongle.



II. Package Contents

1. eXo Mouse
2. Charging Cable
3. Pen Stand
3. User's Manual
4. Mouse Pad
5. Bluetooth USB Adapter
6. Installation CD

Minimum System Requirements:

For Windows®-based PCs

Windows® XP

Windows® 7

Windows Vista®

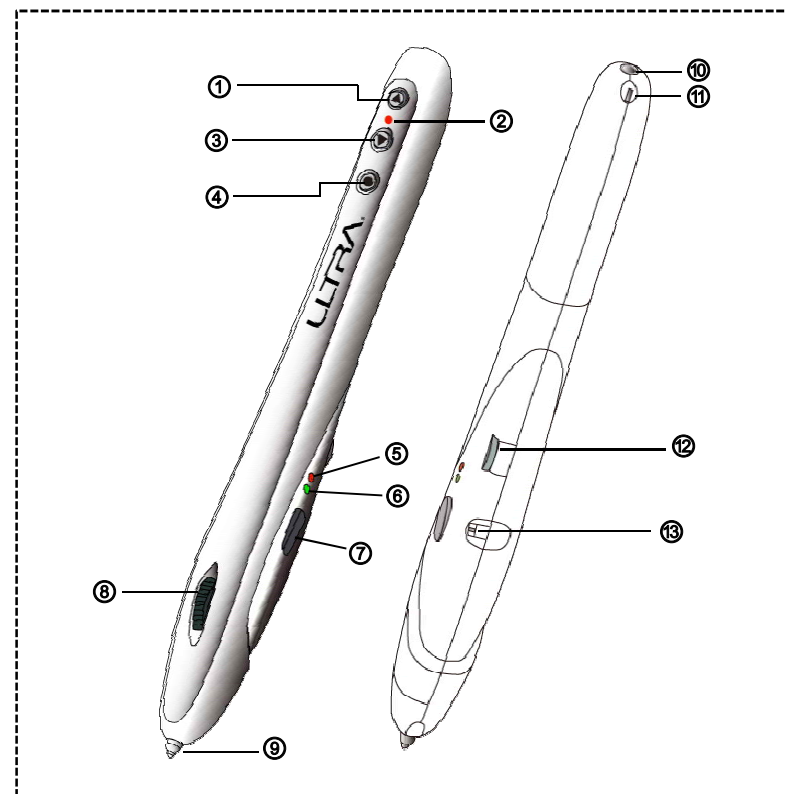
For Apple-based Computers:

Mac OS X v.10.2.6 higher*

*Built-in *Bluetooth®* is required for operation

DANGER	LASER RADIATION-AVOID DIRECT-EYE EXPOSURE
	CLASS 2 LASER PRODUCT Output: <1mW, $\lambda=655\text{nm}$ IEC 60825-1:1993+A1:1997+A2:2001
AVOID EXPOSURE LASER RADIATION IS EMITTED FROM THE APERTURE	

III. Features:



- ① Page Up Button
- ② Charging & Laser Pointer Indicators
- ③ Page Down Button
- ④ Laser Pointer Button
- ⑤ Low Battery Indicator
- ⑥ Motion Indicator
- ⑦ Right Mouse Button
- ⑧ Scroll Wheel
- ⑨ Left Mouse Button (Pen Tip)
- ⑩ Charger Jack
- ⑪ Laser Pointer
- ⑫ DPI Switch
- ⑬ Power Switch

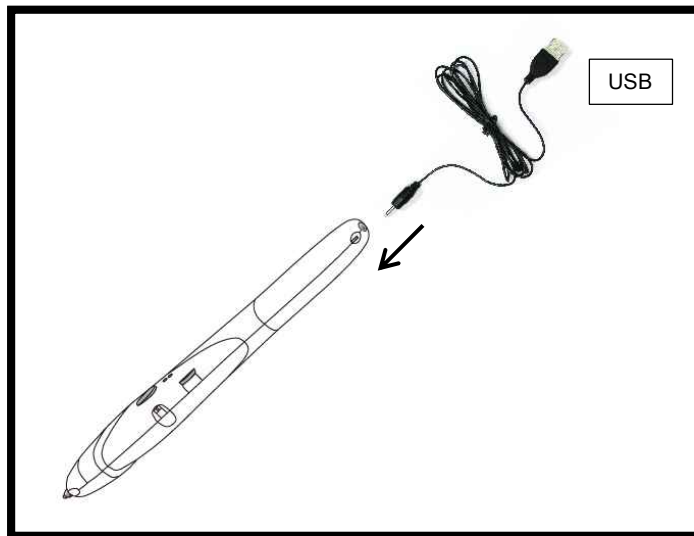
IV. Paring :

- Pairing varies depending on the type of *Bluetooth®* connection used. Ensure first that your *Bluetooth® computer* supports the HID function before paring.
- For computers that are already paired with the eXo, the paring process is not necessary after restarting your computer. Reconnection is automatically made when the eXo is powered and the computer is ready to receive a *Bluetooth®* signal. Also, when the eXo is powered off, is out of range, or has radio interference, the device can loose its connection to the PC. Reconnection is made by turning the eXo OFF then back ON.
- In order to pair your device, turn the eXo OFF then back ON and then press both ① ③ simultaneously for 5 seconds . To indicate the device is in pairing mode, the green and red LEDs will flash.
- If you are not able to enter pairing mode, repeat this procedure.



V. Charging:

In order to charge your eXo, connect it to the charging cable via the port on the top and connect the cable to any available USB port on your computer.



- When the battery is drained, ⑥ on the eXo will blink every 2 seconds.
- We recommend fully charging the battery for 3 hours prior to initial use.
- When the charging cable is connected, ② will illuminate red while charging and Switch to green when charging is complete.
- Charging is possible even when the device is powered off.

VI. Paring the eXo with a PC that Already has a *Bluetooth®* Transmitter:

1. Click on the *Bluetooth®* icon in the Control Panel window.
2. Click on the DEVICE Tab. If the eXo is displayed, registration has already been completed and no further steps are necessary. If the eXo is not listed, click on **Add...**
3. Ensure the eXo is in paring mode by follow the steps above entitled **Paring**
4. Next, check the box for "My device is set up and ready to be found." and click Next.

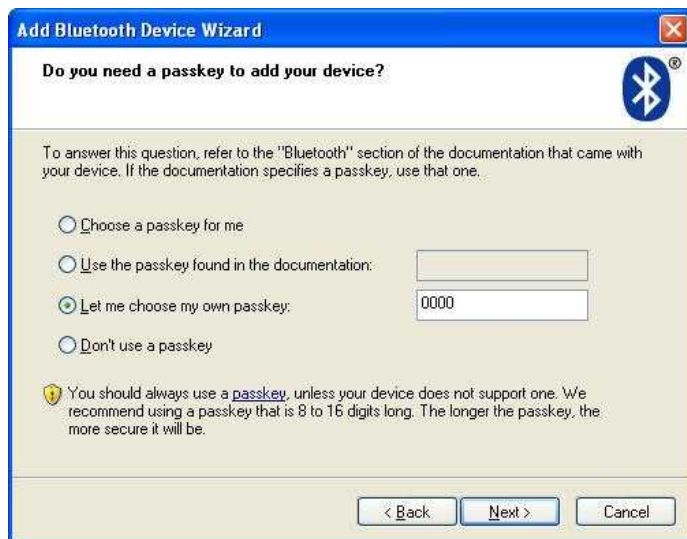


5. Turn on the eXo and press both the Page Up and Page Down buttons (Ⓜ Ⓜ) simultaneously for 5 seconds. The eXo will now be in pairing mode.



If the eXo is not found, confirm if it is in the pairing mode by ensuring the device is in pairing mode and press the **Search Again** button.

6. You will then be asked for a passkey to register the device. Click on the 3rd Pass Key option "Let me choose my own pair key:" and input the following code: **0000**. Click on **Next** to continue.



7. Installation is now complete and the below window should appear. Clicking on **Finish** will allow you to use the eXo.

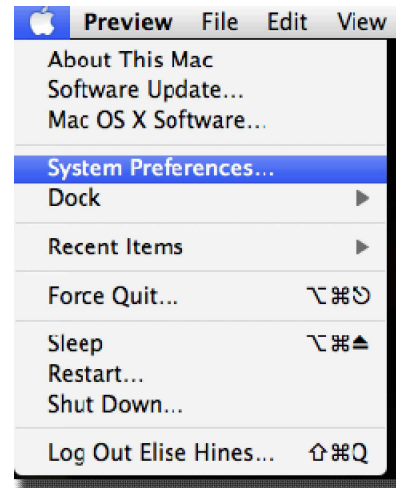


8. When the registration is completed, the eXo will appear listed in the *Bluetooth®* devices list.



VII. Pairing the eXo with your MAC (with built in *Bluetooth®*):

1. Click on the **Apple Menu** and choose **System Preferences**.



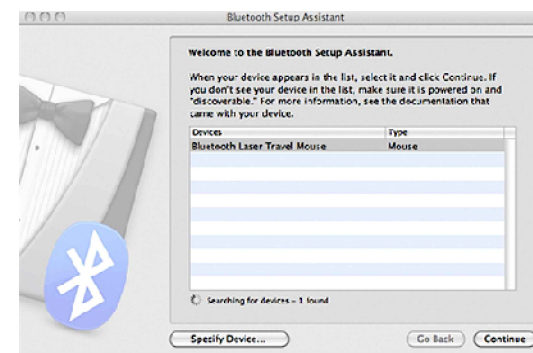
2. Click on the **Bluetooth®** icon.



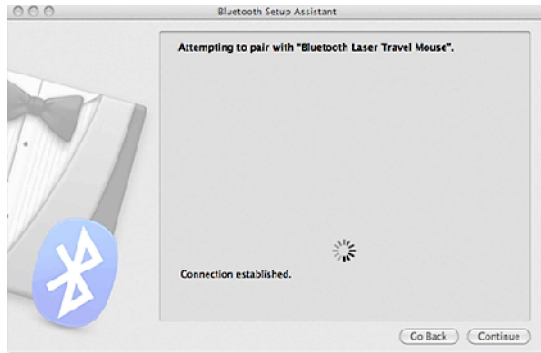
3. In the **Bluetooth®** window ensure the following boxes are selected: **On** and **Discoverable**.



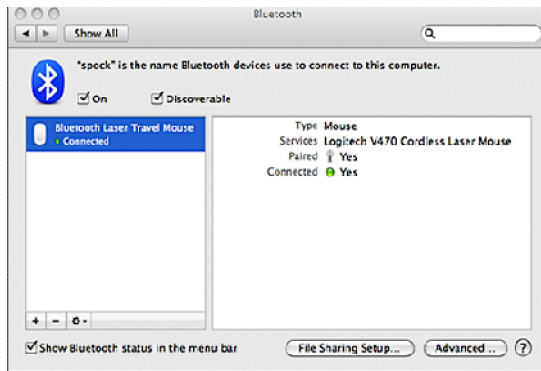
4. Click the checkbox next to **Show Bluetooth status in the menu bar**.
5. Ensure the eXo is in pairing mode by follow the steps above entitled **Pairing**
6. Click the **Set Up New Device....** button and OS X will attempt to connect to the mouse.
7. When the computer is paired with the eXo, it will list it under **Devices** on the **Bluetooth®Setup Assistant** window. When this occurs, click on **Continue**.



8. The computer will finish pairing the eXo and will indicate when the connection has been made.



9. Re-opening the *Bluetooth* preferences window, will show a list of all of the connected devices.



VIII. Pairing the eXo with a PC that does not have a *Bluetooth* Transmitter (PC Only):

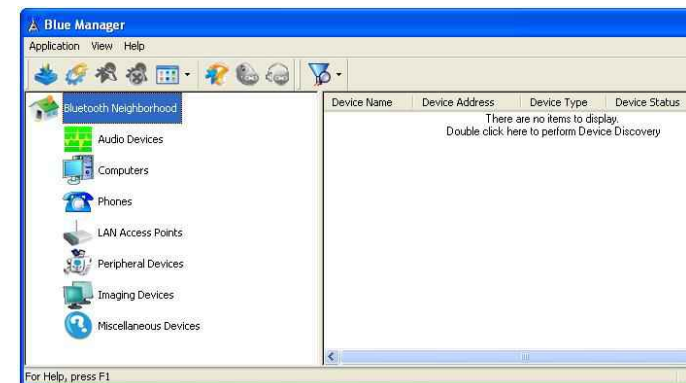
1. Insert the included CD to your system. Click on the Setup icon.
2. Select your language.



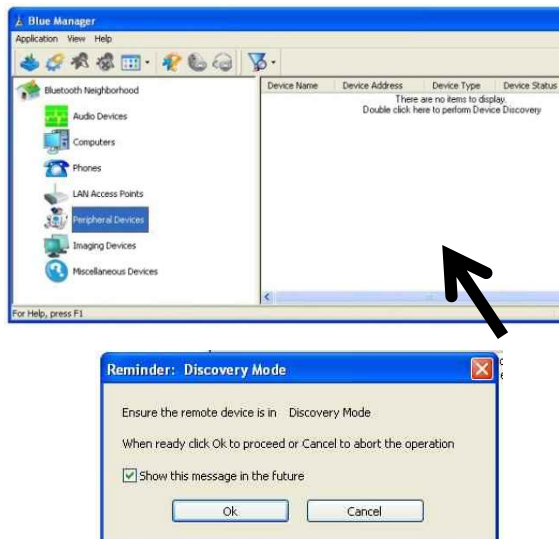
3. Accept terms of license agreement.
4. After installation, connect the *Bluetooth* USB dongle to your system.



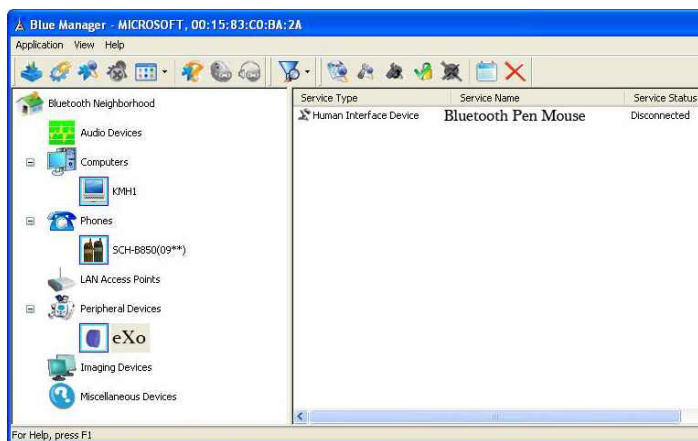
5. Click on the Launch Blue Manager Suite Icon located on your desktop (shown below). The Blue Manager application will launch.



6. Under *Bluetooth®* Neighborhood, select **Peripheral Devices** and double click the indicated area to perform device discovery.



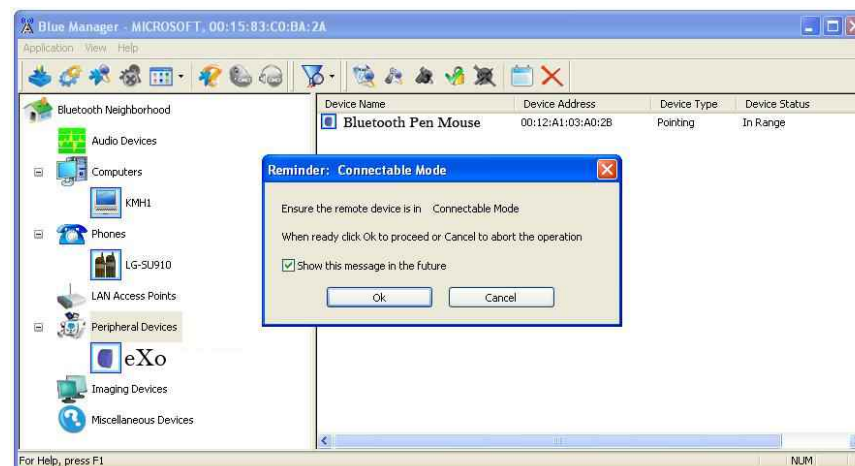
7. A search for *Bluetooth®* devices will start. In order to become discoverable, the eXo must be in pairing mode. See section entitled **Pairing** for instructions on how get the eXo in pairing mode.



8. When the *Bluetooth®* is enabled, the window below will display “Pointing in range” and “Connectable Mode.”

Click **OK** to proceed

The *Bluetooth®* mouse driver will be installed.



9. Once the device is properly installed, the *Bluetooth®* icon on the system tray Will turn from Blue to Green.



IX. LED Indicators.

Status	⑤ RED LED	⑥ GREEN LED
Standby mode	OFF	OFF
Power on	OFF	Blinks Once
When pairing	Blinks Alternate RED & GREEN Until Paring is Complete	
In-use	OFF	ON When Device is Being Used
Text Size	OFF	Blinks Once for 400dpi Blinks Twice for 800dpi
Low Battery	Blinks	OFF
Very Low Battery	Blinks RED and Green 10 times simultaneously then Power off	

Status	② Green/RED LED
Charging	Red LED is On
Full Charged	Green LED is On
Laser pointer Indicator	Red LED is On

X. Product Specifications

- 2.4GHz *Bluetooth®* Optical Pen Mouse
- Bluetooth 2.0, Bluetooth HID 1.0 Profile Support
- Working Distance: 30ft (maximum)
- Resolution: 800/400 DPI
- Battery: Li-ion 3.7V/300mAh
- Full Charging Time : 3 Hours
- Continuous Use: 40 Hours
- Continuous Standby : 1 Week
- Dimensions: 154mm(L)×19mm(W)×18mm(H)
- Weight: 22g
- Length of Charging Cable: 7 ft

XI. Troubleshooting

Trouble	Reason	Troubleshooting
eXo Does not Work	Ensure the device is powered on. By checking that the Green LED is blinking.	Switch the power switch to On.
	Battery power is weak.	Charge the battery.
eXo isn't Working After Rebooting the PC	eXo Is not properly paired with the computer.	Turn OFF the eXo and turn it back ON this should allow the computer to rediscover the device.
Can't Pair the eXo to the PC	The eXo is not in pairing mode. (Check LED indicator status)	Get the eXo into pairing mode by depressing the Page Up button ① and Page Down Button ③ at the same time for 5 seconds. Reinitiate the pairing process on the PC.
Laser Pointer Does Not Work	Battery on the unit is dead.	Charge the battery.
eXo Does Not Charge	Charging cable is not properly connected.	Check if the plug on the charging cable is properly inserted into the eXo and check the Adaptor LED status.

XII. Safety Instructions

When using your equipment, the basic safety precautions should always be followed to reduce the risk of fire, electric shock, and injury , including the following:

1. Read and understand all instructions.
2. Do not use liquid cleaners or aerosol cleaners. Use a damp cloth for cleaning.
3. Do not use this product near water, for example, near a bathtub, washbowl, kitchen sink, or laundry tub, in a wet basement or near a swimming pool.
4. Do not place this product on an unstable cart, stand, or table. The product may fall, causing serious damage to the product.
5. To reduce the risk of electric shock, do not disassemble this product, but take it to a qualified service contract or when some service or repair work is required. Opening or removing covers may expose you to dangerous voltages or other risks. Incorrect reassembly can cause electric shock when the appliance is subsequently used.
6. Never point the equipment at people, especially their faces, or look directly in to the Mouse's laser beam, to avoid possible eye damage.
7. Avoid pointing the Mouse's laser beam at a mirror or other highly reflective surface.
8. Keep the Mouse away from young children.
9. Never view the Mouse's laser beam using telescopic devices, such as a microscope or binoculars.
10. Any attempt to disassemble, adjust or repair the Mouse may result in exposure to laser light or other safety hazards.
11. This is Class II Laser Product.

XIII. Regulatory Compliance

This device complies with part 15 of the FCC Rules. Operation is subject to the following two conditions: (1) This device may not cause harmful interference, and (2) This device must accept any interference received, including interference that may cause undesired operation

XIV. FCC Statement

Tested to comply

This equipment has been tested and found to comply with the limits of a Class B digital device, pursuant to Part 15 of the FCC Rules. These limits are designed to provide reasonable protection against harmful interference in a residential installation. This equipment generates, uses and can radiate radio frequency energy and if not installed and used in accordance with the instructions, may cause harmful interference to radio communications. However, there is no guarantee that interference will not occur in a particular installation.

This equipment does cause harmful interference to radio or television reception, which can be determined by turning the equipment off and on, the user is encouraged to try to correct the interference by one or more of the following measures:

- Reorient or relocate the receiving antenna
- Increase the separation between the equipment and receiver
- Consult the dealer of an experienced radio/TV technician for help

Note: The manufacturer is not responsible for any radio or TV interference caused by unauthorized modifications to this equipment. Such modifications could void the user's authority to operate equipment.