

4.

5.

## Get Set

1. Before you get started, charge your OgoClip by inserting it into the Ogo. (It is recommended that Ogo be connected to the electricity for the initial charging)
2. OgoClip Handset is ON and ready to use once you remove it from its slot. (it is automatically paired with the Ogo - no need to manually pair). To Turn it OFF press “—” for 3 seconds, to turn it back ON press “+” for 3 seconds
3. To answer a call pull the slider out, to disconnect push it back in

## Go...



### ✓ Tips

- Want to make sure OgoClip is connected? Click the OgoClip icon on your home screen to find out
- Want to redial? press “+” for 3 seconds to dial the last number called
- Everyone calling at the same time? press “+” for 3 seconds to switch calls
- If it’s not in your Ogo, clip your OgoClip on to your shirt or pocket for quick access



## QuickStart Guide

OgoClip Handset  
OC-HS1

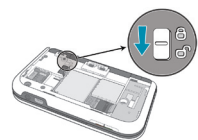
2.

3.

## Get Ready

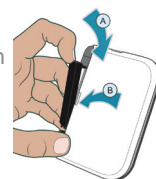
1

**Un-Lock:** Remove the back cover, move the button to unlock position and remove existing clip



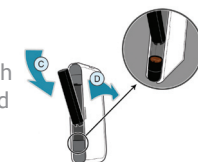
2

**Insert:** Align the tab on the Ogo with the groove on your OgoClip and gently push the OgoClip into place

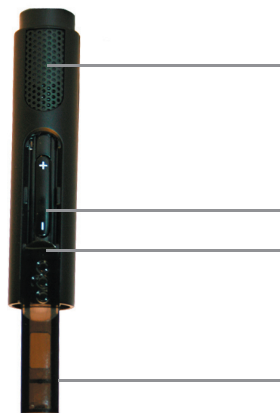


3

**Remove:** Gently push the OgoClip back and remove from slot



## Your Handset



**Slider**  
Pull out to Talk  
Push in to End

**Volume keys**

**Status Light**  
Blue and flashing—ON and ready to use  
Orange and flashing—low battery

**Place by your ear to listen**

## There's an OgoClip For Everyone @ Ogo.com

OgoClip Lights



Playful lights with cool patterns

OgoClip Bottle Opener



Cheers!

OgoClip Stream



Music (and calls) to my ears!

© 2007 IXI Mobile, Inc. All rights reserved



### **FCC RF Radiation Exposure Statement**

This equipment complies with FCC RF radiation exposure limits set forth for an uncontrolled environment. This equipment must not be co-located or operating in conjunction with any other antenna or transmitter.

"This device complies with Part 15 of the FCC Rules. Operation is subject to the following two conditions:

- (1) this device may not cause harmful interference and (2) this device must accept any interference received, including interference that may cause undesired operation ."

### **FEDERAL COMMUNICATIONS COMMISSION INTERFERENCE STATEMENT**

This equipment has been tested and found to comply with the limits for a Class B digital device, pursuant to Part 15 of the FCC Rules. These limits are designed to provide reasonable protection against harmful interference in a residential installation. This equipment generates, uses and can radiate radio frequency energy and, if not installed and used in accordance with the instructions, may cause harmful interference to radio communications. However, there is no guarantee that interference will not occur in a particular installation. If this equipment does cause harmful interference to radio or television reception, which can be determined by turning the equipment off and on, the user is encouraged to try to correct the interference by one or more of the following measures:

- Reorient or relocate the receiving antenna.
- Increase the separation between the equipment and receiver.
- Connect the equipment into an outlet on a circuit different from that to which the receiver is connected.
- Consult the dealer or an experienced radio/TV technician for help.