

**Dok™**

# MULTI-CHARGING SPEAKER SYSTEM

User's Guide



MODEL:  
CR16



- ▶ **BLUETOOTH** Plays Music
- ▶ **SCD (Smart Current Detection)** Technology
- ▶ **Charges Various Devices**

# Contents

---

Thank you for purchasing our product. For operation and security, read this manual carefully and keep it handy for future reference.

Contents.....	01
Features.....	01
Warnings and Precautions.....	02
Important Safety Instructions.....	03
What's in the Gift box.....	04
Location of Functions.....	05
Use the unit.....	06-09

## Features

---



### **Charge any 3 portable devices at once\***

#### **• Features SCD Technology**

Smart Current Detection ensures proper device protection by adjusting the current flow needed to each device.

#### **• Charges 3 Devices, 1 in Cradle**

Charge any 3 devices, with capability of 1 standing upright, simultaneously.

# Warnings and Precautions

**WARNING:** To reduce the risk of fire or electric shock, do not expose this apparatus to rain or moisture.

**CAUTION:** Use of controls or adjustments or performance of procedures other than those specified may result in hazardous radiation exposure.

**\*Caution Marking and rating plate was located at bottom enclosure of the apparatus**



This symbol is intended to alert you to the presence of uninsulated dangerous voltage within the product's enclosure that might be of sufficient magnitude to constitute a risk of electric shock. Do not open the product's case.



This symbol is intended to inform you that important operating and maintenance instructions are included in the literature accompanying this product.

Main plug is used as disconnect device and it should remain readily operable during intended use. In order to disconnect the apparatus from the mains completely, the mains plug should be disconnected from the mains socket outlet completely. (for apparatus with power cordset as disconnect devices)

Battery shall not be exposed to excessive heat such as sunshine, fire or the like. (for once batteries could be used to operate apparatus and/or with battery operated remote control)

Location of label on the apparatus if that label was affixed under a lid or on the bottom of the apparatus with a mass not exceeding 7kg.

## MOISTURE AND CONDENSATION

If unit is exposed to moisture and extreme cold temperatures, then moved to a warm environment, condensation may form on internal components. Under these circumstances, powering the unit on may cause damage to the unit or cause harm to the user. Allow the unit to stand in a warm environment for 1 to 3 hours and allow the unit to air dry safely.

## WHEN IN USE

Do not use this unit in extremely hot, cold, dusty, or humid conditions.  
Do not restrict the air flow of the unit by placing it on carpet or covering.

## FCC Information

The device complies with part 15 of FCC Rules. Operation is subject to the following two conditions:  
(1) This device may not cause harmful interference.  
(2) This device must accept any interference received, including interference that may cause undesired operation.

Changes or modifications not expressly approved by the party responsible for compliance could void your authority to operate the equipment.

The distance between user and products should be no less than 20cm



## SAFETY

When connecting or disconnecting the AC cord, grip the plug and not the cord itself. Pulling the cord may damage it and create a hazard. When you are not going to use the unit for a long period of time, disconnect the AC cord.

# Important Safety Instructions

**1. Read these instructions.** All safety and operating instructions should be read before the product is operated.

**2. Keep these instructions.** The safety and operating instructions should be retained for future reference.

**3. Heed all warnings.** All warnings on the product and in the operating instructions should be adhered to.

**4. Follow all instructions.** All operating and use instructions should be followed.

**5. Water and Moisture.** Do not use this product near water. For example, near a bath tub, wash bowl, kitchen sink, or laundry tub; in a wet basement, or near a swimming pool or similar conditions. The apparatus shall not be exposed to dripping or splashing and that no objects filled with liquids, such as vases, shall be placed on or near this product.

**6. Cleaning.** Clean only with a dry cloth. Unplug this product from the wall outlet before cleaning. Do not use liquid cleaners or aerosol cleaners.

**7. Ventilation.** Slots and openings in the cabinet are provided for ventilation and to ensure reliable operation of the product and to protect it from overheating. These openings must not be blocked or covered. The openings should never be blocked by placing the product on a bed, sofa, rug, or other similar surface. This product should not be placed in a built-in installation such as a bookcase or rack unless proper ventilation is provided.

**8. Heat.** Do not install near any heat sources such as radiators, heat registers, stoves, or other devices that produce heat, including amplifiers.

**9. Grounding or Polarization.** (If applicable) Do not disable or circumvent the polarized or grounding type plug. A polarized plug has two blades with one wider than the other. A grounding type plug has two blades and a third grounding prong. The wide blade or the third prong is provided for your safety. If the provided plug does not fit into your outlet, consult an electrician for replacement of this outlet.

**10. Power Cord Protection.** Protect the power cord from being walked on, pinched, cut or damaged in any way. If any damage occurs, consult with a trained technician for repairs.

**11. Accessories.** Only use accessories specified and approved by the manufacturer. Do not place this product on an unstable cart, stand, tripod, bracket, or table not previously approved by the manufacturer. The product may fall causing serious injury to a child, adult or to the product itself. Any mounting of the product should be done within the manufacturer's guidelines.

**12. Transporting.** If a preapproved device is used to transport this product, caution and care must be observed and practiced to avoid damages. Make sure the device and product together are stable before moving.



S3125A

PORTABLE  
CART  
WARNING

**13. Lightning.** Unplug this product and disconnect the antenna or cable system during lightning storms or when unused for long periods of time. This will help prevent damage to the product due to lightning and power line surges.

**14. Servicing.** Do not attempt to service this product yourself. Opening or removing covers may expose you to dangerous voltage or other hazards. Refer all servicing to a qualified service technician.

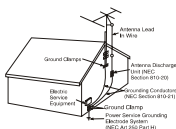
**15. Power Sources.** Only connect to the type of household power supply as indicated in the operating instructions and rating label. If you are not sure of the type of power supplied to your home, consult with local power company. For products intended to operate from battery power, or other sources, refer to the manufacturer's operating instructions.

**16. Overloading.** Do not overload wall outlets or extension cords. This can result in a risk of fire or electric shock.

**17. Foreign Material.** Protect this product from intrusion of any foreign substances like dirt, water, moisture and insects. Do not force any foreign materials or chemicals into this product. This could result in a risk of fire or electric shock.

**18. Replacement Parts and Safety Check.** When replacement parts are required, be sure the service technician has used replacement parts specified and approved by the manufacturer. Ask the service technician to perform safety checks to ensure proper operation to avoid possible fire, electric shock, or other hazards.

**19. Outdoor Antenna Grounding.** If an outside antenna or cable system is connected to the product, be sure the antenna or cable system is grounded so as to provide some protection against voltage surges and built-up static charges. If there's any doubt to the proper grounding of these systems, contact a qualified electrician to inspect your location.



**20. Wall or Ceiling Mounting.** The product should be mounted to a wall or ceiling only as recommended by the manufacturer.

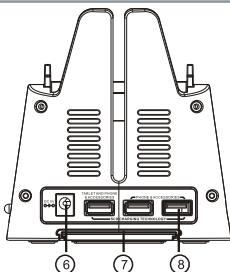
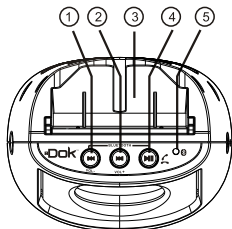
**21. Disconnect Device.** Make sure all disconnect devices are in proper working condition and readily available in the event of an emergency or if power off is needed quickly.

**22. Protective Attachment Plug.** (If applicable) This product may be equipped with an attachment plug having overload protection. This is a safety feature. See Instruction Manual for replacement or resetting of this protective device. If replacement of the plug is required, be sure the qualified service technician has used a replacement plug specified by the manufacturer that has the same overload protection as the original plug.

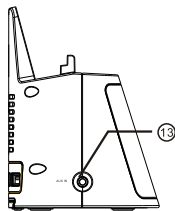
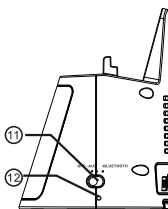
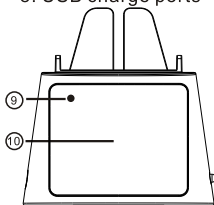
**23. Power Lines.** An outside antenna system should not be located in the vicinity of overhead power lines or other electric light or power circuits, or where it can fall into such power lines or circuits. When installing an outside antenna system, extreme care should be taken to keep from touching such power lines or circuits as contact with them may be fatal. Always consult with your local power company before installing an outside antenna.



# Location of Functions



1. Previous/Volume decrease  
Prev.: Press (⏮) and release to previous track  
(not apply when use AUX IN)  
Vol-: Press and hold to decrease the music volume
2. Next/Volume increase  
Next.: Press (⏭) and release to skip to next track  
(not apply when use AUX IN);  
Vol+: Press and hold to increase the music volume
3. Cradle(for holding personal devices)
4. Play/Pause and phone answer/hang up
5. Bluetooth indicator
6. Power input
7. Extendable support
8. USB charge ports



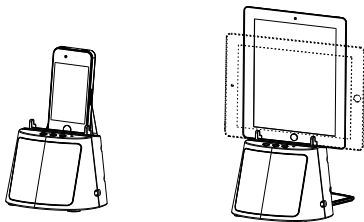
9. Mic area
10. Speaker
11. Power OFF/AUX/BLUETOOTH switch
12. Power indicator
13. AUX IN jack

# Use the unit

---

## 1. iPhone/iPad or other phones stand.

Put them on your desk, table etc.



When placing a tablet or large device in the cradle, pull out the extendable board for stability and preventing the unit from falling over.

## 2. Charging your iPhone/ iPad or other personal devices:

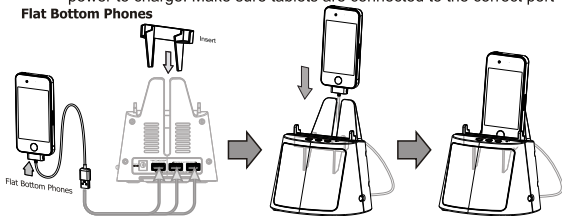
This unit provides USB ports for charging up to 3 devices.

*THE BUILT IN BATTERY IS DESIGNED FOR MUSIC PLAYING ONLY, NOT FOR PERSONAL DEVICE CHARGING.*

- Make sure the adaptor is connected to an active power, Connect your USB cable to your device then to the unit's appropriate USB port.

Note: Phones can be connected to any port, but tablets require more power to charge. Make sure tablets are connected to the correct port

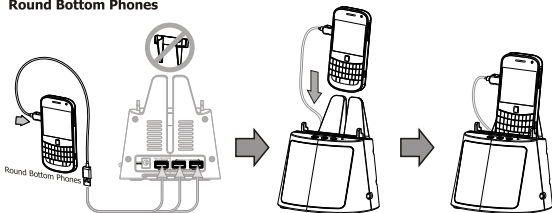
### Flat Bottom Phones



For phones and small devices,  
3pcs of USB ports can be applied

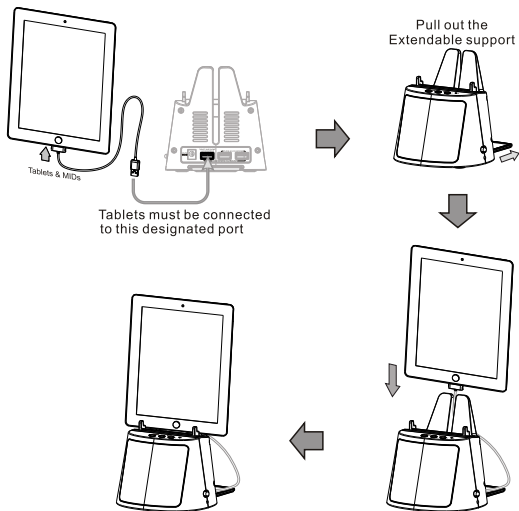
# Use the unit

## Round Bottom Phones



For phones and small devices,  
3pcs of USB ports can be applied

## Tablets & MIDs

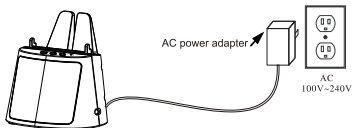




## Use the unit

### b. Connect the power & turn on the unit

Plug the small end of included AC power adapter into the **DC POWER INPUT** on the rear of unit and connect power adapter to an AC power outlet to power the unit.



The built-in Rechargeable "Li-Ion" Battery will be charged when the AC power adapter is connected to an AC power outlet.

### 3. Listen to AUX IN music

a. Using the provided 3.5mm cable, connect one end to your device's audio-out or headphone jack and the other end to CR16's AUX-in Jack on the side of the unit;

b. Turn the unit to the AUX mode by "**OFF - AUX - BLUETOOTH**";

c. Play your music on your phone.

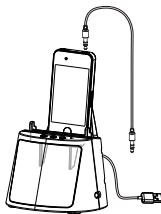
In AUX IN mode, only use your personal device to select music, and PAUSE or PAUSE.

d. You can adjust the music volume via your personal device, and the CR16's volume control. To increase the volume, press an hold(▶▶), to decrease the volume, press an hold(◀◀).

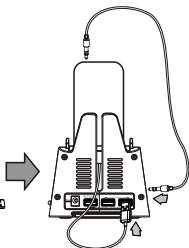
Connect AUX in Cable to personal player headphone jack.



Connect your personal player USB charging cord to your player's recharge socket.



Put your personal player on the CR16.



Connect your personal player to CR16, then connect the power and turn on the unit.

# Use the unit

---

## 4. Using Bluetooth:

### 1). Music playing

#### **STEP 1** - Pairing Your Smart Phone Using Bluetooth:

- a. Power the unit to "BLUETOOTH" by switching the **"OFF -AUX -BLUETOOTH"** Button.
- b. Bluetooth Indicator Light flashes rapidly.





#### **STEP 2** - Setting Your Smart Device to "Discover" the Unit:

- a. Activate the Bluetooth Technology on your smart device.
- b. Select "Setup", "Connect" or the "Bluetooth" Menu on your smart device.
- c. Select the option to "Discover" or "Add" a Bluetooth device.

#### **STEP 3** - Using Your Smart Device to Connect to the Unit:

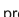





- a. The Smart Device will "Discover" the Model DOK CR16.
- b. The Smart Device will ask if you want to pair with the Model DOK CR16.
- c. Select "Yes" or "OK" to accept the pairing and your Smart Device will confirm when complete.
- d. If they are paired, a connected sound is confirmed the connection, and the Bluetooth Indicator light will light up all the time.

#### **STEP 4** - Playing Audio Via Bluetooth After Pairing:

- a. Press the   Button to "Play" or "Pause" the Audio Files from your Smart Device.
- b. To select music, search the "Music Center" or "Media Player" on your Smart Device.
- c. Press the "Play" button on your Smart Device to start music playing.
- d. You can adjust the music volume via your personal device, and the CR16's volume control. To increase the volume, press an hold() , to decrease the volume ,press an hold() .

#### **STEP 5** - Music and Settings are controlled by and through the Unit.

### 2). Phone calls

- a. You can automatically make a telephone call with Bluetooth after the Pairing by pressing the   Buttons to answer the call and speaking into MIC area.
- b. Music will "Pause" automatically when your Smart Device receives a telephone call. Music will resume when call is ended.
- c. Answer or end a telephone call using Bluetooth by pressing the   Button.
- d. A quick double clicks of the   Button, can redial the latest number you called.

# USB CHARGING CABLE FOR DOK UNITS

**Sku: UCAPP**  
For iPod, iPhone  
& iPad



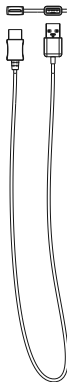
**Sku: UC750**  
For Sony Ericsson  
K750



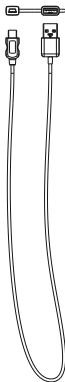
**Sku: UCG90**  
For LG KG90



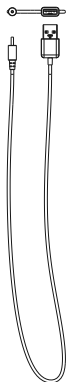
**Sku: UC900**  
For Samsung i900



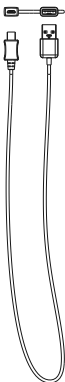
**Sku: UCMV3**  
For Motorola V3



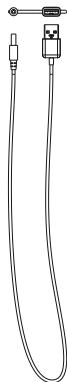
**Sku: UCN90**  
For Nokia N90



**Sku: UCMV8**  
For Motorola V8



**Sku: UCPSp**  
For PSP



**Sku: UC800**  
For Samsung D800,  
Galaxy series



**Sku: UC825**  
For Nokia 8250



# ORDER FORM • ACCESSORY USB CHARGING CORDS

USB charging cords for pre-Smart Phone generations



Apple  
Price: \$10.00  
Sku: UCAPP  
Buy Now ☐



Sony Ericsson  
Price: \$10.00  
Sku: UC750  
Buy Now ☐



LGKG90  
Price: \$10.00  
Sku: UCG90  
Buy Now ☐



Samsung  
Price: \$10.00  
Sku: UC900  
Buy Now ☐



Mini USB  
Price: \$10.00  
Sku: UCMV3  
Buy Now ☐



Nokia  
Price: \$10.00  
Sku: UCN90  
Buy Now ☐



Micro USB  
Price: \$10.00  
Sku: UCMV8  
Buy Now ☐



PSP  
Price: \$10.00  
Sku: UCPSP  
Buy Now ☐



Samsung  
Price: \$10.00  
Sku: UC800  
Buy Now ☐



Nokia  
Price: \$10.00  
Sku: UC825  
Buy Now ☐

**Make Checks or Money Orders Payable to: Easy-Doks LLC. Add \$3.00 S&H.**

PLEASE PRINT CLEARLY

Name: \_\_\_\_\_

Address: \_\_\_\_\_

City: \_\_\_\_\_ State: \_\_\_\_\_ Zip: \_\_\_\_\_

Phone: \_\_\_\_\_

Email: \_\_\_\_\_

Brand of Phone: \_\_\_\_\_ Model No.: \_\_\_\_\_

☐ Visa ☐ MasterCard ☐ Discover ☐ AMEX

CC# \_\_\_\_\_

Exp Date: \_\_\_\_ / \_\_\_\_ CVV (3 Digits) \_\_\_\_\_ Signature: \_\_\_\_\_

Made in China