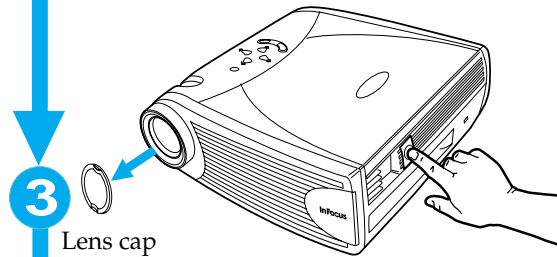
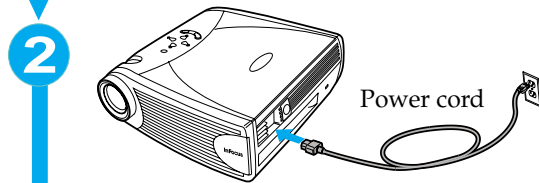
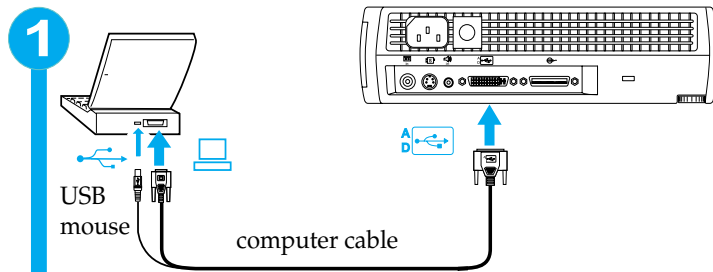
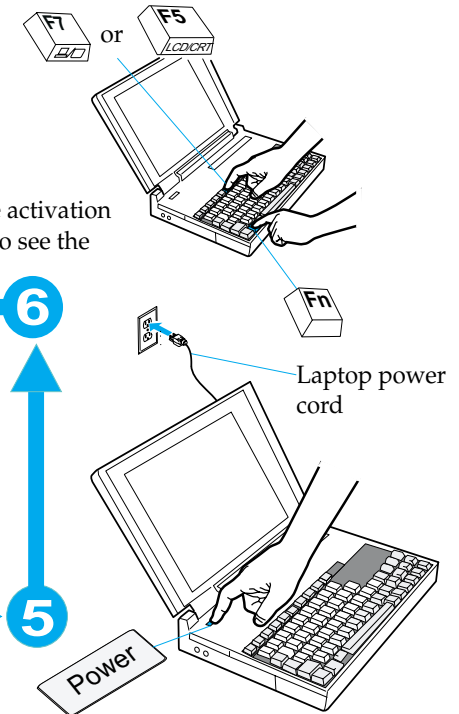
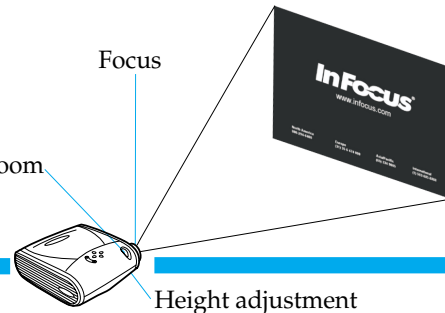


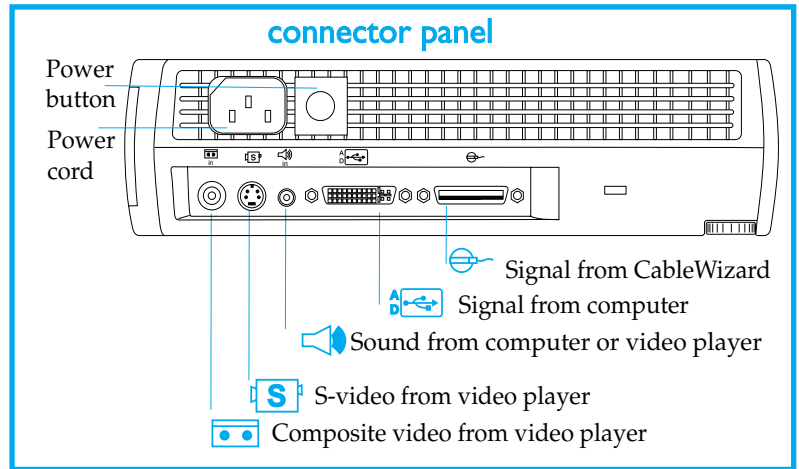
LPTM 340B/350 Quick Start



Adjust the image position.



If necessary, press the activation keys on your laptop to see the image on the screen.*



* Your computer may use a different key combination. Check your computer's user's guide for more information.
Look for additional information, including troubleshooting and contact information, on the reverse side.

009-0571-00

Still need help?

Remember, your *LP340B/350 User's Guide* includes comprehensive instructions on setting up and operating your projector.

1 Nothing appears on the screen.

Make sure you have plugged in the power cable, removed the lens cap, and pressed the Power switch on the side of the projector.

2 All I see is the InFocus screen.

Make sure the computer cable is connected between the computer and the projector. Try pressing the laptop activation keys once more. Sometimes you need to press them twice to make the image appear on the screen. If you also have a video player plugged into the projector, try pressing the Source button on the keypad or the Computer button on the remote.

3 There's no computer image on the screen, just the message, *Perfecting the Image*, in the lower right corner.

The projector may be having a hard time synchronizing with the computer signal. Try pressing the Menu button on the projector keypad or remote. On the Image menu, turn Auto Image to Off. See the User's Guide for help with the menus.

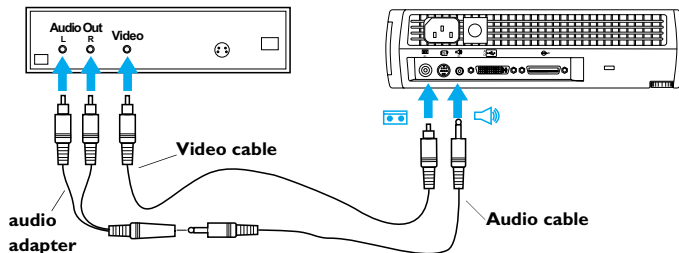
4 The computer image fills the screen, but the text is fuzzy and hard to read.

Try setting your laptop's resolution to the projector's native resolution (Start/Settings/Control Panel/Display/Settings tab, select 800x600 for the LP340B, 1024x768 for the LP350). If your laptop only goes up to 800x600 or 640x480, turn off Auto Resize on the Image menu in the projector. The image will be smaller, but it should be sharp. See the User's Guide for help with the menus.

5 I can only see part of the computer image on the screen.

Try setting your laptop's resolution to the projector's native resolution. With some laptop computers, it's necessary to disable the laptop display to do this. You use the activation keys to show the image only on the screen.

6 How do I play a video through the projector?



Need to talk to someone?

Contact InFocus Technical Support.

- ⇒ In North America, call InFocus at **+1 (800) 799-9911** between 6 a.m. and 6 p.m. PST, Monday-Friday.
-Or-
Call +1 (888) 592-6800 after hours or weekends
(a fee-per-instance charge may apply).
- ⇒ In Europe, call InFocus in The Netherlands at **+31 (35) 6474010**.
- ⇒ In Asia, call InFocus in Singapore at **+65 353-9449**.
- ⇒ Elsewhere, call **+1 (503) 685-7224**.
- ⇒ Go to our Web site at www.infocus.com/service for information and an E-mail form for Technical Support.

SAFETY INSTRUCTIONS

Please read and follow all safety instructions provided in this quick start and your User's Guide BEFORE using your projector. Failure to comply with safety instructions may result in fire, electrical shock, or personal injury and may damage or impair protection provided by equipment. Please save all safety instructions.

Safety Definitions

- **Warning:** Statements identify conditions or practices that could result in permanent personal injury.
- **Caution:** Statements identify conditions or practices that could result in damage to your equipment.

Safety Symbols



Attention: For information about usage of a feature, please refer to the User's Guide.



Warning: Hot surface. Do not touch.



An arrow pointing to lamp door of the projector.

Safety Terms:

- **Warning:** Don't look directly into the lens when the projector is turned on.
 - **Warning:** To replace the lamp, turn off the projector and unplug the power cord. To avoid burns, wait 30 minutes before opening the lamp door. Follow all instructions provided in the User's Guide.
 - **Warning:** Please use the power cord provided. Connect the power cord to a receptacle with a protective safety (earth) ground terminal.
- **Warning:** Refer all service to qualified service personnel. Servicing your own projector will void the warranty.
- **Caution:** Don't block ventilation openings.
- **Caution:** Don't set liquids on the projector. Spilled liquids may damage your projector.
- **Caution:** Don't place the projector on a hot surface or in direct sunlight.
- **Caution:** Do not drop the projector. Transport the projector in an InFocus-approved case; see the User's Guide for a list of cases.