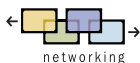


# LP<sup>®</sup>790

**PROJECTORNET™ READY****ProjectorNet**

Built-in networking for projector control and administration in an intuitive tool that gives you the power to remotely monitor and manage projectors for improved reliability, increased security and reduced total cost of ownership

**COMPACT DESIGN**

Just over 13 pounds, with efficient, unobtrusive styling for dedicated installations

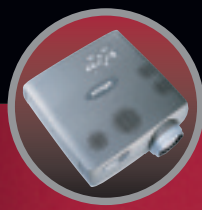
**WHISPER-QUIET PERFORMANCE**

3300 max ANSI lumens at less than 38dB for distraction-free presentations

**EXTENSIVE CONNECTIVITY**

Accepts virtually any source—VCR, DVD, PC/Mac, LAN, and DVI





# LP790®

## INFOCUS QUALITY VIDEO

The advanced video processor converts existing standard definition video from DVD, videotape, laser disc, satellite or standard broadcast television to a near high-definition signal, dramatically improving the video image.

### Video Processing

- Motion-adaptive video deinterlacing
- Source adaptive processing
- Film mode detection with 3:2 and 2:2 pull-down
- Source Transition Management provides seamless transitions between source types
- Auto-dynamic thresholds enable reliable 3:2 pull-down and 2:2 pull-down detections even with noisy sources
- Motion detection on per-pixel basis
- Four input fields used to determine contents of each output frame
- Cubic interpolation for pixel calculations
- Diagonal processing reduces artifacts and distortion
- Low-noise, high-accuracy 10-bit video DACs

## SERVICE YOU CAN COUNT ON

InFocus Corporation is the worldwide leader in digital projection. Our dedication to quality and customer satisfaction is reflected in service options that will bring you a greater return on your investment. Most InFocus Corporation projectors come with a standard two-year limited factory warranty, including parts and labor and a 90-day lamp replacement. Our customer support offers you unparalleled service and convenience, whatever your needs.

For service program details in your region, please visit:

[www.infocus.com/service/service\\_offerings](http://www.infocus.com/service/service_offerings)

### Ships Standard With:

- **Wired/wireless remote control with mouse control and laser pointer**
- **AC power cord (US or European)**
- **PS/2 mouse control cable**
- **USB cable**
- **VGA cable**
- **Standard video cable**
- **Multiple language user guide**
- **Quick Start Card**
- **CD**

## ORDERING INFORMATION

### Model Number

LP790 For worldwide use

### Optional Accessories

- Samsonite® Deluxe Travel Case (CASE-801)
- ATA Shipping Case (CA-ATA-008)
- Digital/Analog Interface Card (SP-DVI-CARD)
- Ceiling Mount Kit (SP-CEIL-001)
- PC Guardian® Projector Cable Lock (SP-LOCK)
- 20m wired remote cable (301145)
- Mind Path® PocketPoint RF Remote (HW-RF-POCKETPNT)
- 50-inch Portable Projection Screen (A650)
- 60-inch Deluxe Insta-Theatre Screen (HW-DLXSCRN)
- 84-inch Wall/Ceiling Mountable Screen (HW-WALLSCR84)
- Replacement Lamp – 1,500 hours (SP-LAMP-008)
- 50ft VGA Extension Bundle (SP-VGAEXT-D or SP-VGAEXT-I)
- ProjectorNet Software 5-Seat CD package (SW-PN-5UD)
- ProjectorNet network adapter and cable bundle (HW-PN-AC1)

To learn more about ProjectorNet™ please visit [www.infocus.com/projectornet](http://www.infocus.com/projectornet)

## TECHNICAL SPECIFICATIONS

Native Resolution	• XGA (1024 x 768)
Display Technology	• polysilicon TFT x 3 with micro lens array
Input Sources	• <b>Computer:</b> HD15 x 2 (analog RGB), DVI-D, 5BNC (RGBHV, RGB, RGSB), audio x 4 (3.5 mm stereo mini jack) • <b>Video:</b> YPbPr and RGB Component Video (via 5BNC), S-Video, Composite Video, audio (RCA x 2)
Output Sources	• RGB (HD15), audio (RCA x 2)
Computer Compatibility	• SXGA+, SXGA, XGA, SVGA, VGA, Macintosh®
Video Compatibility	• HDTV (1080i, 720p), NTSC, NTSC 4.43, PAL, SECAM
Brightness	• 3300 max ANSI lumens
Brightness Uniformity	• 85%
Contrast Ratio	• 950:1 full on/full off
Number of Colors	• 16.7 million
H-Synch Range	• 15 – 100 kHz
V-Synch Range	• 43.5 – 130 Hz
Dot Clock	• 12 – 165 MHz
Digital Keystone Correction	• +/- 15°
Projection Lens	• f = 47 – 61 mm
Throw Ratio	• 1.75 – 2.24:1
Minimum	
Projection Distance	• 1.1 m
Aspect Ratio	• 4:3 native; 5:4, 16:9 supported
Image Size (diagonal)	• 30" – 300" (762 mm – 7620 mm)
Projection Methods	• Front/rear, ceiling/desktop
Audio	• 2 x 2.5 Watt stereo with 20 Watt subwoofer
Control	• USB mouse, PS/2 mouse, RS-232
Communication	• Onboard TCP/IP networking for projector control
Lamp	• 250-Watt UHP, 1500 hours
Dimensions	• 12.7" (W) x 5.1" (H) x 13.9" (L) 322 mm (W) x 130 mm (H) x 352 mm (L)
Weight	• 13.2 lbs /6.0 kg
Power Consumption	• 400 Watts
Power Supply	• 100V – 240V at 50 – 60 Hz
Operating Temperature	• 5° – 35° C at sea level (0 – 10,000'); 41° – 95° F
Menu Languages	• English, German, French, Spanish, Italian, Norwegian, Portuguese, Japanese, Chinese
Audible Noise	• Less than 38dB
Approvals	• UL, cUL, CE, FCC Class A,TUV, C-tick, NOM, IRAM
Lamp Warranty	• 90 days or 500 hours, whichever comes first
Warranty	• Two years parts and labor

## PROJECTION DISTANCES

Distance	Minimum Image				Maximum Image				
	Diagonal Image	Image Width	Diagonal Image	Image Width	Diagonal Image	Image Width	Diagonal Image	Image Width	
3.6'	1.1 m	2'	0.61 m	1.6'	0.49 m	2.57'	0.78 m	2.06'	0.63 m
5'	1.5 m	2.79'	0.85 m	2.23'	0.68 m	3.57'	1.09 m	2.86'	0.87 m
10'	3.0 m	5.58'	1.70 m	4.46'	1.36 m	7.14'	2.18 m	5.71'	1.74 m
15'	4.6 m	8.37'	2.55 m	6.70'	2.04 m	10.71'	3.27 m	8.57'	2.61 m
20'	6.1 m	11.16'	3.40 m	8.93'	2.72 m	14.29'	4.35 m	11.43'	3.48 m
25'	7.6 m	13.95'	4.25 m	11.16'	3.40 m	17.86'	5.44 m	14.29'	4.35 m
30'	9.1 m	16.74'	5.10 m	13.39'	4.08 m	21.43'	6.53 m	17.14'	5.23 m
35'	10.7 m	19.53'	5.95 m	15.63'	4.76 m	25.00'	7.62 m	20.00'	6.10 m

[www.infocus.com](http://www.infocus.com)

### InFocus Corporate Headquarters:

27700B SW Parkway Avenue • Wilsonville, Oregon 97070-9215, USA  
Phone: 503-685-8888 • 1-800-294-6400 • Fax: 503-685-8887

### In Europe: InFocus International BV

Strawinskylaan 585 • 1077 XX Amsterdam • The Netherlands  
Phone: (31) 20 5792000 • Fax: (31) 20 5792999  
Freephone: 008000 4636287 (008000 INFOCUS)

### In Asia: 238A Thomson Road • #18-01/04 Novena Square

Singapore 307684 • Telephone: (65) 6334-9005 • Fax: (65) 6333-4525

InFocus® and LP® are registered trademarks of InFocus Corporation. All other trademarks are used with permission or are for identification purposes only and are the property of their respective companies. ©2002 InFocus Corporation. All rights reserved. 11/02 805-0491-02 LP790\_DS\_E.qxd