
User's Manual

Infraworks Co., Ltd.

FCC Information

This equipment has been tested and found to comply with the limits for a Class B digital device, pursuant to part 15 of the FCC Rules. These limits are designed to provide reasonable protection against harmful interference in a residential installation.

This equipment generates, uses and can radiate radio frequency energy and, if not installed and used in accordance with the instructions, may cause harmful interference to radio communications. However, there is no guarantee that interference will not occur in a particular installation.

If this equipment does cause harmful interference to radio or television reception, which can be determined by turning the equipment off and on, the user is encouraged to try to correct the interference by one or more of the following measures:

- Reorient or relocate the receiving antenna.

- Increase the separation between the equipment and receiver.

- Connect the equipment into an outlet on a circuit different from that to which the receiver is connected.

- Consult the dealer or an experienced radio/TV technician for help.

CAUTION: Changes or modifications not expressly approved by the manufacturer responsible for compliance could void the user's authority to operate the equipment.

Table of Contents

CHAPTER 1 Introduction	28
1-1 Introduction	28
1-2 Package	28
1-3 System Requirements	28
1-4 Video Specification	28
1-5 Audio Specification	29
CHAPTER 2 Set Up	30
2-1 Driver installation	30
2-2 Setup Pideo Station	34
2-3 Configurations – Sound	37
2-4 Configurations – Display	39
CHAPTER 3 Connecting Devices	40
3-1 Connecting Pideo to a video	40
3-2 Connection Pideo to a TV	41
3-3 Connection Pideo to a camcorder	41
CHAPTER 4 Pideo Station Operations	42
4-1 To Start	42
4-2 Video Recorder	42
4-3 Video Email	43
4-4 Video Security	43
4-5 MPEG Encoder	44
4-6 MPEG Editor	45
4-7 Connect Internet	45
4-8 Photo Editor	46
CHAPTER 5 Uninstall	47
5-1 Uninstall the Pideo Station	47
5-2 Uninstall the Pideo Driver	48
CHAPTER 6 FAQ	51
WARRANTY	52

CHAPTER Introduction

Thank you for purchase Pideo (Audio / Video Digital Recording System)

1-1 Introduction

Pideo's core concept is that you can enjoy video from a personal computer (PC + VIDEO). It is a "Digital Multimedia Converter System" that enables you to convert analog signals to digital signals from such devices as video player, camcorder, and TV. It also allows you to enjoy the video in real-time and gives you the convenience of storing the video with Pideo. Pideo is connected to a PC by using a USB port, and by utilizing our software, it is quite easy to connect and use it with convenience and speed.

1-2 Package

- Pideo (USB Type)
- Stereo Cable 1, AV Cable 1
- Manual
- Install CD (Pideo Software)

1-3 System Requirements

- Windows98, Windows ME, Windows2000, Windows XP
- Pentium II 350MHz or higher (Pentium III 500 or higher Recommended)
- 64MB RAM or higher
- 24 Bit Color Display or higher
- USB Port 1.1
- Video memory: 8 MB or higher
- Hard: 300 MB or higher

1-4 Video Specification

- Video Format: AVI, MPEG-1, VCD-NTSC, VCD-PAL
- Video Bitrate: 1150000 bps ~ 3000000 bps
- Capture Resolution: SIF MPEG-1, VGA AVI, MPEG-VCD
- Frame Rate: 30 fps
- Controls: Sharpness, Tint, Brightness, Contrast, and Saturation
- NTSC / PAL AUTO

1-5 Audio Specification

- Audio Format: MPEG-1 layer II
- Audio Bitrate: 224 Kbps
- Sampling Frequency: 44.1 KHz
- Record and Play AVI, MPEG-1
- VIDEO & AUDIO Overlay - Record and Play simultaneously

CHAPTER 2. Set Up

Close the all other application programs before the installation.

Before connecting Pideo to PC's USB port, insert CD into CD-ROM.

Setup program (Pideo Install Manager) runs automatically. Otherwise, double click the Install.exe file using the Window explorer



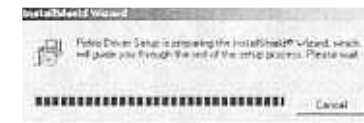
2-1 Driver Installation

Before connecting Pideo to PC, install the driver first.

 < Depending on operating System, following screen may appear slightly different >

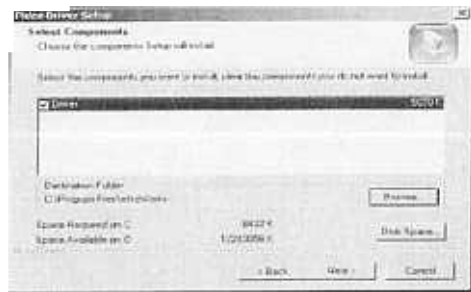
Install Pideo Driver

Click the [Install Pideo Driver] in the Pideo Install Manager.





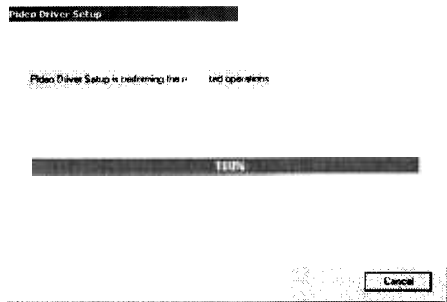
Click [Next].



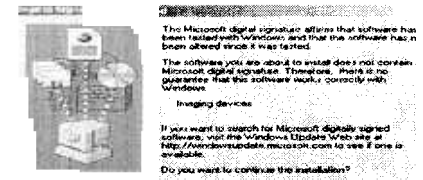
Next].



For safe installation, make sure Pideo is disconnected from USB port. Click [OK].



Installing.



Click [Yes].

<Depends on the system setting, dialog box may not be appeared on the screen.



Click [OK] button.

<Depends on the Operation System, [Restart the System] dialog box may be appeared on the screen - If [Restart the System] dialog box is appeared, follow the instruction and then go to the next step. >

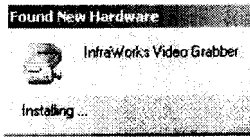
2 Connecting the device

Connect Pideo's USB cable to USB port of PC.

Automatically installation screen will appear. If not, after booting computer, try again.



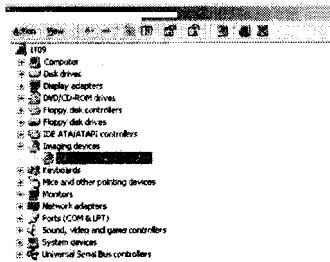
After dialog box appears, click [Yes]



Installing

< Depends on the system setting, dialog box may not be appeared on the screen.

3 Verifying the installation



Verifying the installation

- [Start – Settings – Control Panel – System – Hardware – Device Manager – Imaging devices – InfraWorks Video Grabber] (In case of Windows2000,XP)
- [Start – Settings – Control Panel – System – Device Manager – Imaging devices – InfraWorks Video Grabber] (In case of Windows ME, 98)



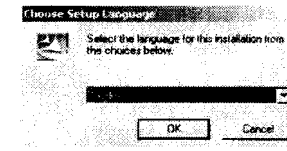
you cannot see the [InfraWorks Video Grabber], installation is not completed.
refer to FAQ for reinstallation.

-2 Setup Pideo Station

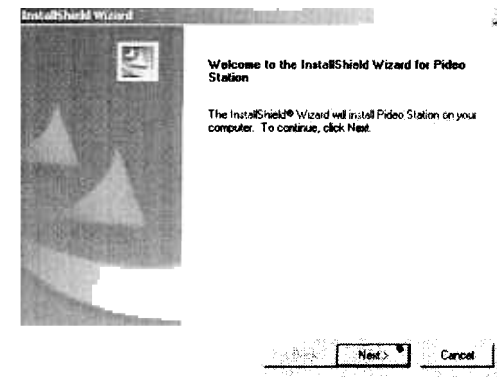
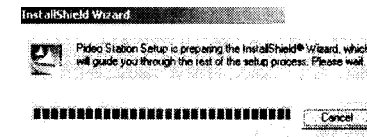
Introducing Pideo Station – Professional video software that offers various video applications including edit, save, real-time video play.

1 Install Pideo Station

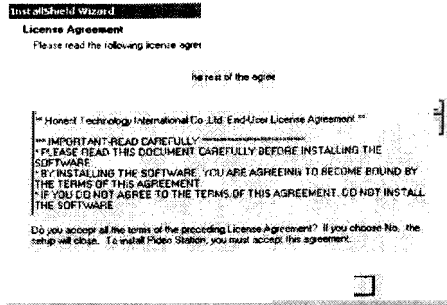
Click the [Install Pideo Station] on the Pideo Install Manager.



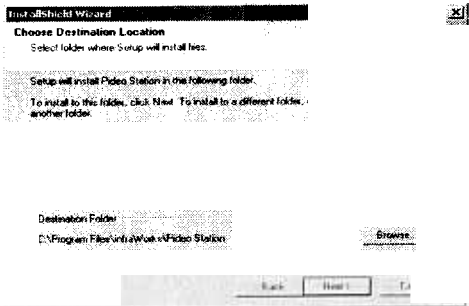
Select the language and then Click the [OK].



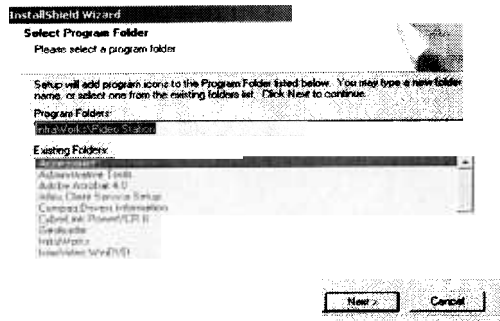
Click [next].



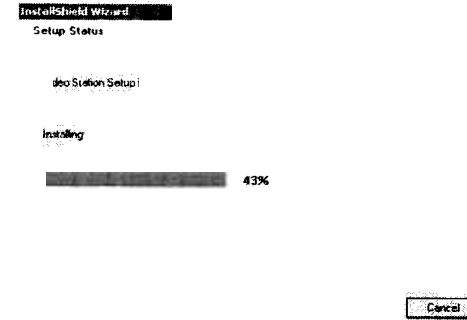
After reading License Agreement, click [Yes] when you agree, otherwise you can't install the Pideo Station.



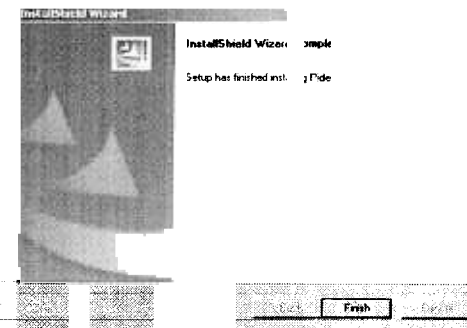
After selecting the folder where setup will install program, click [Next].



After selecting folder where program icon will be added, click [Next].



Installing.



Click [Finish]. Installing the Pideo Station is finished.

Depends on the Operation System, [Restart the System] dialog box appeared on the screen. If that case, restart the system.

2 Verifying the installation

Pideo folder has been created.

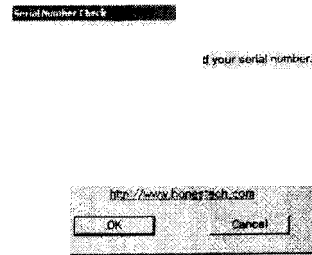
[Start - Programs - InfraWorks - Pideo Station - Pideo Station]



Also, icon was created on desktop.

3 Registrations

Following [Serial Number check]

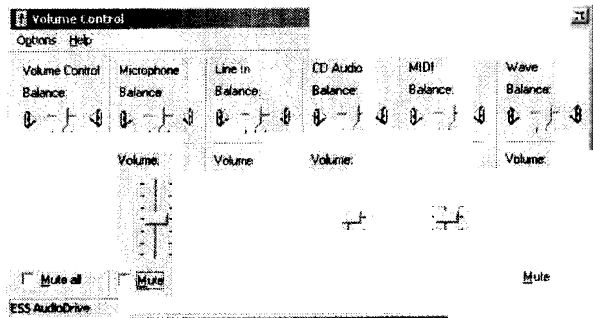


Write the CD KEY and Serial Number

2-3 Configurations – Sound

1 Setup the Volume Control

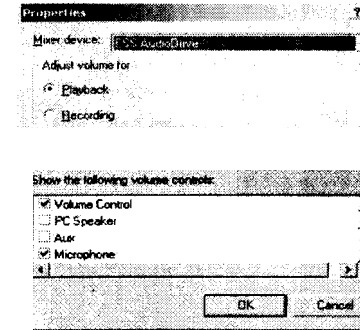
Click the tray icon.



Enable operation of Line-In and Wave.

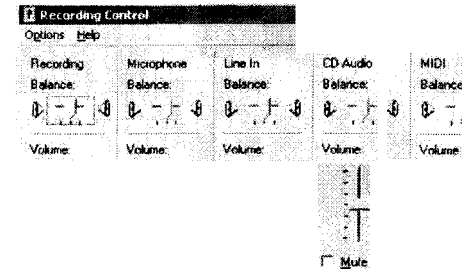
The box next to "Mute" for Line-In/Wave must be unchecked.

In case Line-In does not appear, check on [Line-In] in [Options - Properties] and then check the [Adjust volume for - Recording] section.



2 Setup the Recording Control

In the dialog box [Recording Control], [Option - Properties] and then check the [Adjust volume for - Recording]. Click the [OK]. (Check the [Line-In] in [Show the following volume controls] section.)



Enable Line-In operator

Check the Line-In

Volume can be adjusted with the microphone volume

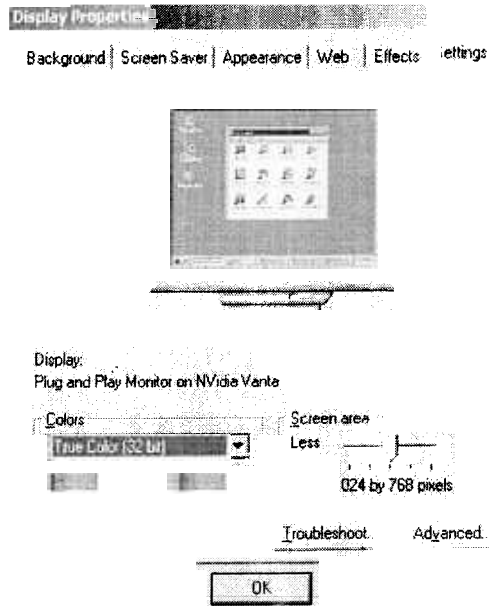
If there is no Line-In configuration.

you have to setup MC same as Line-In

4 Configurations Display

Click [Start - Settings - control panel]

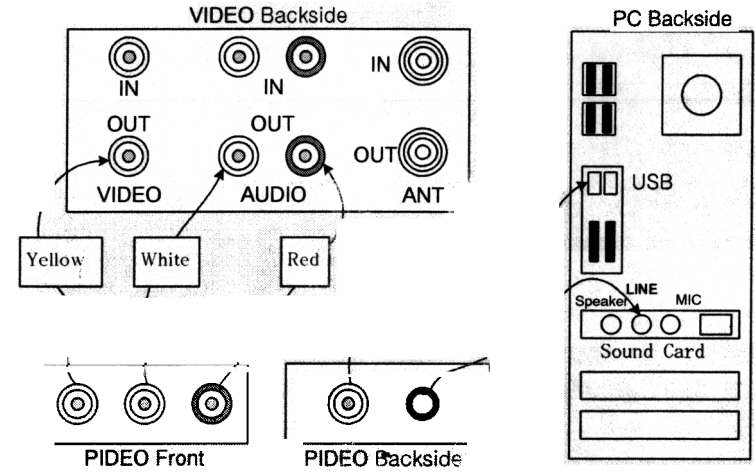
Double click on the [Display].



In Settings tap, select [Settings - Colors - True color (32 bit)] or at least 24 b

CHAPTER 3. Connecting Devices

3-1 Connecting Pideo to a Video



2

Connect AV cable to Pideo and VCR in corresponding colors.
Connect PIDEO to VIDEO OUT and AUDIO OUT jacks on VCR.
Connect only the white cable if VCR only has mono audio.

3

Connect Stereo Cable to Pideo's stereo port and Line-In PC.
Interlink Pideo's USB port to USB port of computer.
Run the Pideo station. (Reference Chapter 4 Pideo Station)

3-2 Connecting Pideo to a TV


If there is OUT port on TV, TV broadcast can be recorded by same method.

If VCR has TV tuner, TV broadcast can be recorded in computer without a TV.

3-3 Connecting Pideo to a camcorder

Connect video cable from Pideo's video input port, and the other connects to video output port of camcorder.

To record the sound of video, connect audio cable from audio port of camcorder to soundcard's Line-In port of computer.

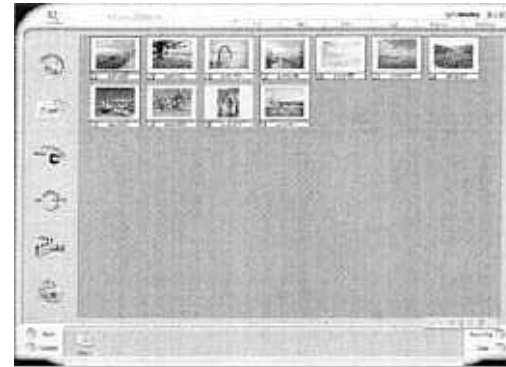
 Yellow cable is video cable, and white and red cables are audio

CHAPTER 4. Pideo Station Operations

4-1 To Start

[Start - Programs - InfraWorks - Pideo Station - Pideo Station]. Or double click [Pideo Station] of screen.

Following screen (Digital Album) shows up.



4-2 Video Recorder



Play & Real-time recording (AVI, MPEG-1 Form)



- Control: System, Screen capture, Device setting button.
- Option: Play & Record option button.
- Snap: Snap shot button.
- Record: Record button.
- File: Open file menu button.

4-3 Video Email



Create video, still image and sends via Internet.



- : Record Button.
- : Capture Button.
- : Play /Pause /Stop button.
- : Open the record file list
- : Via image mail to use wizard function
- : Setting the background of image.
- : Change the setting.

4-4 Video Security



Intelligent motion detection feature activates camera or camcorder to capture full motion video.

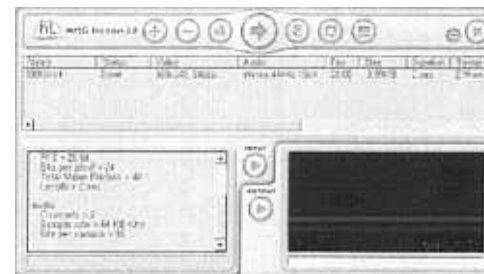


- : Start button.
- : Stop button.
- : Schedule button.
- : Option button.
- : Open the file menu button.
- : Depends on color Stop/Start/Record
- : Sensitivity of system.

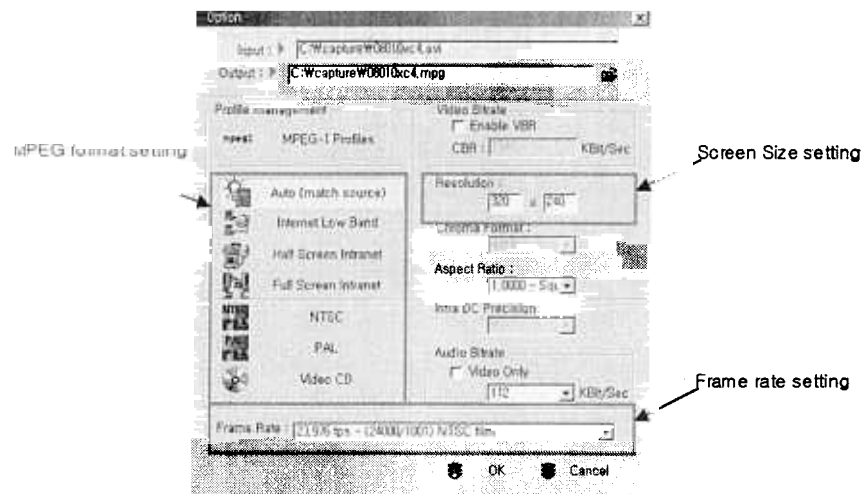
4-5 MPEG Encoder



Convert AVI file format into MPEG-1



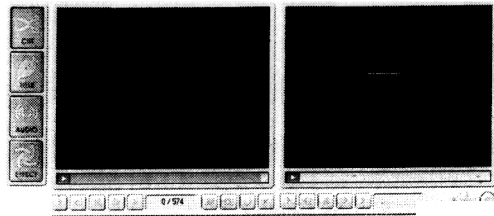
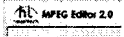
- : Add button.
- : Delete button.
- : Option button.
- : Encoding button.
- : Stop button.






4-6 MPE Editor



Editing MPEG- file such as editing Frame, Audio, special effect and text editing.



-  Open file button.
-  Delete the file & Clip button.
-  File reference button.

4-7 Connect Internet



Connecting the Pideo homepage (www.pideo.com)

4-8 Pho

Double click the any image in the Digital Album, Photo Editor appear on the screen. Using the setting button on the right side of Photo editor, you can control the simple setting like Distortion, Changing color, Filtering etc.



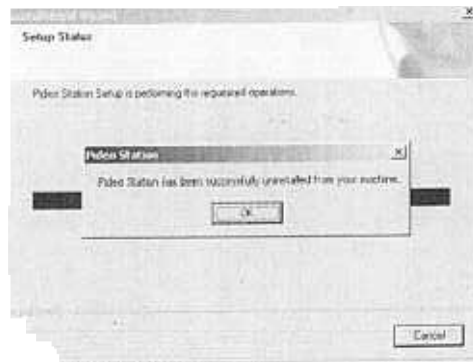
CHAPTER 5. Uninstall

5-1 Uninstall the Pideo Station

[Start – Programs –InfraWorks– Pideo Station] and then click [Uninstall Pideo]



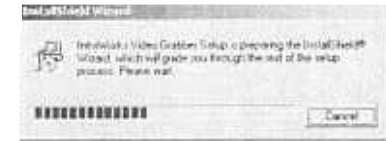
Click [Yes].



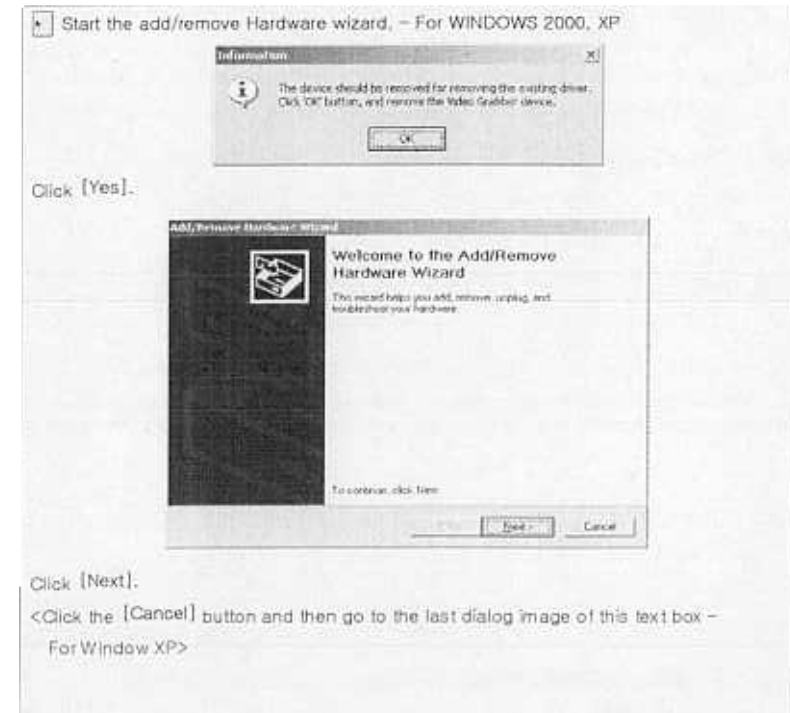
Click [OK].

5-2 Uninstall the Pideo Driver

Click the [Start – Programs – InfraWorks – Uninstall Pideo Driver].



Click [Yes].



Click [Yes].

Click [Next].

<Click the [Cancel] button and then go to the last dialog image of this text box – For Window XP>

Add/Remove Hardware

Choose a Hardware
Which hardware to

1. This hardware task you want to perform
2. To troubleshoot a device
3. To select the option if you are adding a new
4. To obtain getting a device working
5. To install/unplug a device
6. To select the option to uninstall a device

Back Next >

After selecting [Uninstall/Unplug a device], click [Next] button.

Add/Remove Hardware Wizard

Choose a Removal Task
You can remove a device permanently or temporarily

Select the removal task you want to perform, and then click Next.

- Uninstall a device
Choose this option to permanently uninstall a device and its driver.
- Unplug/Eject a device
Choose this option to temporarily unplug or eject a device.

Next >

After checking to [Uninstall a device] click [Next] button

Add/Remove Hardware Wizard

Installed Devices on Your Computer
The following hardware is installed on your computer.



Next >

After selecting InfraWorks video Grabber in Add/Remove Hardware Wizard, click [Next] button. Pideo appears only in case of it is connected.

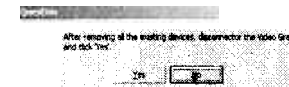
Add/Remove Hardware

Uninstall a Device

1. To troubleshoot a device
2. To select the option if you are adding a new
3. To obtain getting a device working
4. To install/unplug a device
5. To select the option to uninstall a device

Back Next > Cancel

Click 'Next' button after checking 'Yes, I want to uninstall this device' Device uninstall is completed.



Remove Pideo cable from USB port
Click [Yes] button.

Installation Wizard



Maintenance Complete

InstallShield Wizard has finished performing operations on InfraWorks Video Grabber.

Click [Finish] button.
Uninstall is Complete

