

Lane/3000

Desk/1500

User Guide



[www.ingenico.com](http://www.ingenico.com)

28-32, boulevard de Grenelle, 75015 Paris - France / (T) +33 (0)1 58 01 80 00 / (F) +33 (0)1 58 01 91 35  
Ingenico - SA au capital de 47 656 332 / 317 218 758 RCS Nanterre

# Contents

<b>1_ Introduction</b>	<b>4</b>
<b>2_ Unpacking</b>	<b>5</b>
<b>3_ Recommendations</b>	<b>6</b>
<b>3_1 Safety</b>	<b>6</b>
<b>3_2 Security of your terminal (tampering attempt detection)</b>	<b>7</b>
<b>3_3 Main Characteristics</b>	<b>9</b>
<b>3_3_1 Standard version</b>	<b>9</b>
<b>3_3_2 Power characteristics</b>	<b>10</b>
<b>3_4 Functional description</b>	<b>11</b>
<b>3_5 Installation &amp; Connections</b>	<b>12</b>
<b>3_5_1 Positioning the terminal</b>	<b>12</b>
<b>3_5_2 Inserting SAM (Secure access module)</b>	<b>12</b>
<b>3_5_3 Connecting the terminal to the host</b>	<b>15</b>
<b>3_5_4 Setting the terminal on the standpole                 adaptor</b>	<b>16</b>
<b>4_ Daily use</b>	<b>18</b>
<b>4_1 Card reading</b>	<b>18</b>
<b>4_1_1 Swiping a card</b>	<b>18</b>
<b>4_1_2 Inserting a smart card</b>	<b>18</b>
<b>4_1_3 Reading a contactless card</b>	<b>18</b>

4_2	Signature capture (Option)	19
4_3	Audio (Option)	19
5	Maintenance	20
5_1	Cleaning	20
5_1_1	Cleaning of the terminal	20
5_1_2	Entretien du terminal	20
5_1_3	Wartung von Endgeräten	21
5_2	Transport and storage	21
5_3	Troubleshooting	21
6	Cables	23
7	Norms & Marking	24
7_1	Federal Communications Commission (FCC) Statement	24
7_2	Industry Canada (IC) Statement	26
7_3	Environment (WEEE, Batteries and Packaging)	26
7_4	Marking	27

# 1\_Introduction

Thank you for choosing an Ingenico payment terminal.

We recommend you to read carefully this user guide: it gives you the necessary information about safety precautions, unpacking, installation and maintenance of your terminal.



## WARRANTY / SECURITY

To benefit from the guarantee-related product, and to respect the security, we ask you to use only the power supply delivered in box with the product, entrusting maintenance operations only to an authorized person. Failure to comply with these instructions will void the manufacturer's responsibility.

---



This symbol indicates an important Warning.

---



This symbol indicates a piece of advice.

---

## 2\_Unpacking

According to the model, the following items are included in the packaging box (including optional accessories):

**> The terminal**



The box may also include the following items depending on your working configuration:

- > An installation guide**
- > Cable (specific to connectivity requirements)**
- > Power supply unit and power cord**
- > A stylus**
- > Modules**
- > Screws to fix the main cable and the module**



---

**CAUTION**

The power supply unit provided with your equipment is specially designed for it. Do not use any other power supply.

---



---

**ADVICE**

Keep the packaging. It must be re-used whenever the terminal is shipped.

---

## 3\_Recommendations

### 3\_1 Safety

#### Power on/Power down - Emergency stop

To power on or power down the terminal, connect or disconnect the power supply from the electric outlet.

#### Power supply unit



##### CAUTION

Only use the power supply AC/DC provided with the terminal or the power provided by a cash register limited power source (LPS according to IEC60950-1 or IEC62368-1).

Authorized power supply units :

Power Supply Unit Supplier	Type	Supplier reference	Electrical characteristics	Ingenico part number
PHIHONG TECHNOLOGY Co. Ltd	Wallplug	PSC16E-080L6IN-R PSC16A-080L6IN-R	8VDC 2A Level VI	296199611 296196003

##### CAUTION

#### Lithium battery cell



The terminal is fitted with a lithium battery cell which is not accessible to the user. Only a qualified technician is authorized to open the unit and change this component. Risk of explosion if the battery is replaced by an incorrect type. Dispose of used battery according to the instructions.

#### Electrical power supply network

The electrical outlet must meet the following criteria:

- Must be installed near the equipment and easily accessible;
- Must meet standards and regulations in the country of use.

## Explosion areas

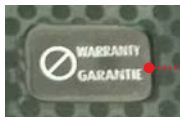
Certain regulations restrict the use of radio equipment in chemical plants, fuel depots and any site where blasting is carried out. You are urged to comply with these regulations. The terminal shall be protected by a specially fitted and certified cover enabling use in proximity to a fuel pump.

## 3\_2 Security of your terminal (tampering attempt detection)

Your device fulfils current applicable PCIPTS security requirements. Upon receipt of your terminal you should check for signs of tampering of the equipment. It is strongly advised that these checks are performed regularly after receipt. You should check, for example: that the keypad is firmly in place; that there is no evidence of unusual wires that have been connected to any ports on your terminal or associated equipment, the chip card reader or any other part of your terminal. Such checks would provide warning of any unauthorised modifications to your terminal, and other suspicious behaviour of individuals that have access to your terminal.

Your terminal detects any "tampered state". In this state the terminal will repeatedly flash the message "Alert Irruption!" and further use of the terminal will not be possible. If you observe the "Alert Irruption!" message, you should contact the terminal helpdesk immediately. You are strongly advised to ensure that privileged access to your terminal is only granted to staff that have been independently verified as being trustworthy.

The terminal must never be put in or left at a location where it could be stolen or replaced by another device.



**Warranty label  
(on the bottom side of the  
terminal)**



---

**WARNING**

If the warranty label is torn or removed, the warranty will be void.

---



---

**CAUTION**

Positioning of the terminal on check stand must be in such a way to make cardholder PIN (Personal Identification Number) spying infeasible.

Installing device on an adjustable stand must be in such a way that consumers can swivel the terminal sideways and/or tilt it forwards/backwards to a position that makes visual observation of the PIN-entry process difficult.

Positioning of in-store security cameras such that the PIN-entry keypad is not visible.

NEVER ask the customer to divulge their PIN Code. Customers should be advised to ensure that they are not being overlooked when entering their PIN Code.

---



---

**CAUTION**

This equipment may not be modified, altered or changed in any way without signed written permission from Ingenico

---

## 3\_3 Main Characteristics

### 3\_3\_1 Standard version

<b>Weight (Poids, Gewicht)</b>	254g (8.95 oz)
<b>Size (dimensions, Maße)</b>	180.2 (L) x 83.2 (W) x 43 (H) mm
<b>Display</b>	2.8" backlit LCD, QVGA (800 x 480 pixels)



### Operating conditions

<b>Ambient temperature</b>	from 0°C to +40°C (External power supply) from 0°C to +45°C (Other)
<b>Max relative humidity</b>	85% RH non-condensing at +40°C
<b>Max altitude</b>	2000 m

### Storage conditions

<b>Storage temperature</b>	-20°C, +55°C
<b>Max relative humidity</b>	85% at +55°C

## 3\_3\_2 Power characteristics

### Power supply units

The terminal can be powered by several ways:

- An external power supply unit (LPS type according IEC60950-1 or IEC62368-1 standard)
- By POE (Power over Ethernet - IEEE 802.3af compliant)
- By USB (5VDC or 12VDC - LPS type)

The characteristics for each type of power supply are detailed hereafter.

## Power supply unit

External Power supply	296199611	296196003
Model Name	PSC16E-080L6IN-R	PSC16A-080L6IN-R
Weight	160g (5.6 oz)	160g (5.6 oz)
Size (l x w x h)	74 x 35 x 46.2 mm	74 x 35 x 46.2 mm
Class	Level VI	Level VI
Input voltage	AC 100-240V 50-60Hz	AC 100-240V 50-60Hz
Output voltage	DC 8V 2A (+/- 5%)	DC 8V 2A (+/- 5%)

POE (IEEE 802.3af)	PD (Powered Device)	PSE (Power Sourcing Equipment)
Power	DC 48V 1.3W	Class 0

USB power		
Output voltage	DC 5V 0.5A	DC 12V 2A

### WARNING



The power supply unit provided with your equipment is specially designed for this Ingenico terminal. Do not use any other power supply. The use of a power supply with apparently similar voltage/current characteristics may

damage your terminal.

### AVERTISSEMENT



Dans le cas où vous choisiriez d'utiliser un bloc alimentation, assurez-vous de n'utiliser que le bloc d'alimentation qui a été conçu spécialement pour votre terminal. N'utilisez pas d'autre bloc d'alimentation. L'emploi d'un bloc d'alimentation présentant des caractéristiques apparemment similaires de tension/intensité peut endommager votre terminal.

● SEAMLESS PAYMENT



## WARNHINWEIS

Nur das Netzteil, das speziell für Ihr Gerät ausgelegt wurde, benutzen. Benutzen Sie kein anderes Netzteil. Die Benutzung eines Netzgeräts mit scheinbar ähnlicher Spannung/ Stromstärke kann zur Beschädigung Ihres Terminals führen.

## 3\_4 Functional description



● SEAMLESS PAYMENT

## 3\_5 Installation & Connections

### 3\_5\_1 positioning the terminal

Place the terminal with an easy access to an electrical outlet. Place the terminal away from any heat source and protected from dust, vibrations and electromagnetic radiations (away from video terminals, PC, anti-shoplifting barriers...). The terminal is exclusively made for indoor use.

The terminal may be mounted on a flat surface, wall, or customer stand.



---

#### CAUTION

Do not place the terminal on a PC monitor, adjacent to an electronically active security tag deactivation system, or near other sources of magnetic fields.

---

The Terminal device must be at least 30 centimeters (12 inches) away from an electronically active type of security tag deactivation pad.

- An electronically active system sends out a powerful and potentially disruptive signal to deactivate the security tag. If the terminal device is placed too close to the system's pad, or placed above the pad, the product may not work properly.
- A passive system is a permanent magnet type that does not send out a signal. This type should not affect the terminal device.

### 3\_5\_2 Inserting SAM (Secure access module)



---

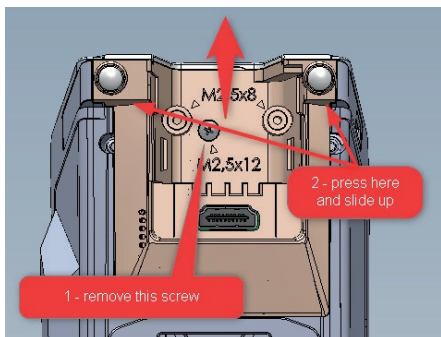
#### CAUTION

Before starting, switch off the terminal by disconnecting the power supply.

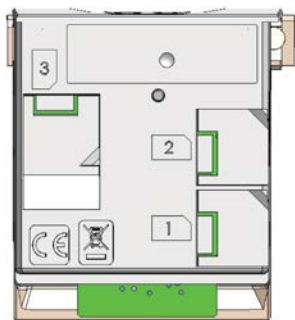
---

#### Perform the following operations:

- Unscrew the module and remove it
- Access to SAM is now possible.

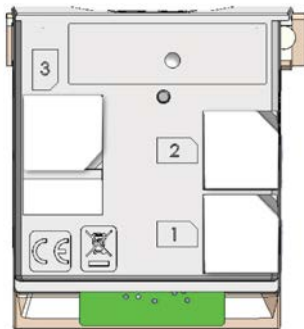


- The SAM need to be inserted on the reverse side of the module



• SEAMLESS PAYMENT

- Insert the SAM Card into the slot marked (1), (2) or (3) by sliding it. Take care to ensure that the SAM Card is inserted in the correct manner. The cut corner must be positioned as indicated on the figure below.



- Slide back the module inside the terminal and screw it tight



---

**CAUTION**

Do not use any tools when installing or removing the SAM Card.

---



---

**WARNING**

During this operation, it is necessary to be in an ESD protected environment. As this is not very easy, it is recommended to make this operation using ESD shoes for example.

---

### 3\_5\_3 Connecting the terminal to the host

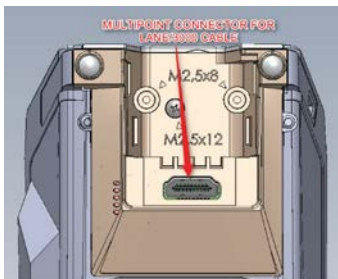


---

**CAUTION**

Connecting must be made when power supply unit is not plugged in the cable.

---



- Flip the terminal. There is one port on the back for power and communications.
- Connect the cable on the terminal.
- Connect the other end to the power supply unit and a Host (PC / cash register..).
- Plug the power supply into the mains.



## WARNING

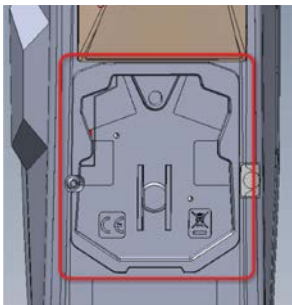
The main port at the back must not be used to connect a video cable.  
Only connect cables provided by Ingenico.

---

**Note** : 2 screws can be added (M2.5 x 8) to hold more firmly the cable to the terminal.

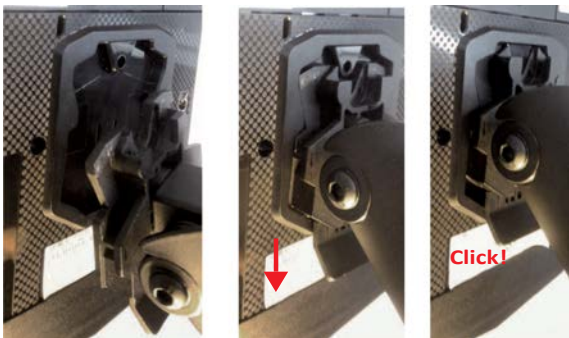
### 3\_5\_4 Setting the terminal on the stand- pole adaptor

Install the terminal on a flat surface is not possible on the Lane/3000 (Desk/1500) as is. It is designed to be fitted on a stand-pole adaptor. The specific pattern by Ingenico is also available on the Lane/3000 and Desk/1500.



To fit the Lane/3000 or Desk/1500 to the stand pole adaptor, it only requires to slide down the terminal until a click sound:





The terminal is now ready to use:



● SEAMLESS PAYMENT

## 4\_Daily use

### 4\_1 Card reading

#### 4\_1\_1 Swiping a card

- Insert the card manually in the reader, magnetic stripe facing the main body of the terminal, and slide the card from the rear to the front in a continuous motion for best results.



Swipe the card with constant speed, neither too slowly nor too fast, to maximize the reading efficiency and avoid annoying repetitions.

#### 4\_1\_2 Inserting a smart card

- Chip cards should be inserted into your terminal as illustrated with the chip facing up and into the card reader.



#### 4\_1\_3 Reading a contactless card

- Bring the card to the active zone above the contactless logo (at about 1cm).
- Keep the card close to the contactless logo during the transaction.

Your contactless terminal provides four contactless status lights located above the contactless logo.

- When a contactless transaction is started the first (left hand) status light will be lit steadily; this indicates that the contactless is in use but a card is not being read.
- When a contactless card is presented to the contactless active zone during a transaction the second, third and fourth status lights will be lit in turn. The card read is successful when all four status lights are lit and a confirmation tone can be heard.



● SEAMLESS PAYMENT

**CAUTION**

Do not stick any label onto the contactless active zone. It can decrease seriously contactless efficiency.

---

**CAUTION**

Avoid metallic parts around the contactless area.

---

# 5\_Maintenance

## 5\_1 Cleaning

### 5\_1\_1 Cleaning of the terminal

---



#### **CAUTION**

Before making any operations of maintenance in the terminal, make sure that the power supply is disconnected.

---

First of all, unplug all the wires from the terminal.  
Good rules for proper cleaning of the terminal are:

- Use Ingenico Cleaning kit : <http://www.ingenico.cleaningcards.com/>
- Do not clean the electrical connections.
- Do not use in any case, solvents, detergents or abrasive products :  
Those materials might damage the plastic or electrical contacts.
- Avoid exposing the terminal to the direct rays of the sun.
- Do not put anything into the slot of the smart card reader

### 5\_1\_2 Entretien du terminal

---



#### **ATTENTION**

Assurez-vous que tous les câbles sont bien débranchés du terminal avant toute intervention de maintenance sur le terminal.

---

Avant tout, débranchez tous les câbles du terminal.  
Pour bien nettoyer le terminal :

- Utilisez les kits de nettoyage Ingenico : <http://www.ingenico.cleaningcards.com/>
- Ne nettoyez pas les connexions électriques.
- N'utilisez jamais de solvants, de détergents, d'alcool ou de produits abrasifs :  
Ces produits peuvent endommager le plastique ou les contacts électriques.
- Évitez d'exposer le terminal aux rayons directs du soleil.
- N'insérez rien dans la fente du lecteur de carte.

## 5\_1\_3 Wartung von Endgeräten

---



### **ACHTUNG**

Stellen Sie vor jeglicher Wartungsarbeit an dem Terminal sicher, dass die Stromversorgung unterbrochen ist

---

Als erstes alle Kabel vom Terminal trennen.

Regeln für eine ordnungsgemäße Reinigung des Terminals :

- Für die Außenseite des Terminals, Ingenico Cleaning kits benutzen: <http://www.ingenico.cleaningcards.com/>
- Keine elektrischen Anschlüsse reinigen.
- Auf keinen Fall Lösungsmittel, Waschmittel oder Scheuermittel verwenden:  
diese Mittel können den Kunststoff oder elektrische Kontakte beschädigen.
- Das Terminal keiner direkten Sonneneinstrahlung aussetzen.
- Nichts in den Schlitz des Chipkartenlesers einführen.



### **CAUTION**

Before making any operations of maintenance in the terminal, make sure that the power supply is disconnected.

---

## 5\_2 Transport and storage

- Use the original packaging for storage or returning the unit.
- Disconnect all cables from the terminal during the transport.

## 5\_3 Troubleshooting

### **Device is not working**

- Make sure that the terminal connector is fully inserted into the back of the device.
- Restart the device.
- If you have another working terminal device, swap the devices to determine if the problem is with the device, cable, POS, or power supply.
- If the Lane/3000 or Desk/1500 device is directly connected to a host, reset the host by turning it off and back on again.

### **Magnetic Card Reader Does Not Work Properly**

- When sliding the card through the reader, make sure that the magnetic stripe on the card is facing the terminal display screen (see *Swiping a Magnetic Stripe Card*).
- Swipe the card at a faster or middle steady speed.
- Inspect the magnetic stripe on the card to make sure it is not scratched or badly worn.
- Security tag deactivation system could disturb the magnetic card reader
- To determine if the problem is with the card :
  - a. If your host device has a magnetic stripe reader, try swiping the card there.
  - b. If you have another working Lane/3000 or Desk/1500 device, try swiping the card there.

### **Smart Card Reader Does Not Work Properly**

- Make sure you have inserted correctly the smart card into the smart card reader and removed the card only after the transaction



---

#### **WARNING**

Changes or modifications to this device not expressly approved by the party responsible for compliance could void the user's authority to operate the equipment.

---

## 6\_Cables

The terminal can be connected to the host by several ways, with alternative cables:

- High speed USB device
- Ethernet
- RS232

Following are some alternative accessories that can be used to connect the terminal. This list is not exhaustive. Please contact your reseller for more information.

- **RS232 cable (optional)**



- **USB cable (optional)**

Reference: 296111170AC (length 2m)



- **USB powered 12V cable (optional)**



---

• SEAMLESS PAYMENT

- Ethernet cable (optional)



## 7\_Norms & Marking

### 7\_1 Federal Communications Commission (FCC) Statement

#### 15.21

You are cautioned that changes or modifications not expressly approved by the part responsible for compliance could void the user's authority to operate the equipment.

#### 15.105(b)

This equipment has been tested and found to comply with the limits for a Class B digital device, pursuant to part 15 of the FCC rules. These limits are designed to provide reasonable protection against harmful interference in a residential installation. This equipment generates, uses and can radiate radio frequency energy and, if not installed and used in accordance with the instructions, may cause harmful interference to radio communications. However, there is no guarantee that interference will not occur in a particular installation. If this equipment does cause harmful interference to radio or television reception, which can be determined by turning the equipment off and on, the user is encouraged to try to correct the interference by one or more of the following measures:

- Reorient or relocate the receiving antenna.
- Increase the separation between the equipment and receiver.
- Connect the equipment into an outlet on a circuit different from that to which the receiver is connected.
- Consult the dealer or an experienced radio/TV technician for help.

#### 15.19 (a) (3)

This device complies with Part 15 of the FCC Rules. Operation is subject to the following two conditions:

- 1) This device may not cause harmful interference and
- 2) This device must accept any interference received, including interference that may cause undesired operation of the device.



**CAUTION:**

To comply with FCC RF Exposure compliance, the equipment must be installed to provide a separation distance of at least 20 cm from all persons.

## 7\_2 Industry Canada (IC) Statement.

This device complies with Industry Canada licence-exempt RSS standard(s). Operation is subject to the following two conditions:

- 1) this device may not cause interference, and
- 2) This device must accept any interference, including interference that may cause undesired operation of the device.

Le présent appareil est conforme aux CNR d'Industrie Canada applicables aux appareils radio exempts de licence. L'exploitation est autorisée aux deux conditions suivantes:

- 1) l'appareil ne doit pas produire de brouillage, et
- 2) l'utilisateur de l'appareil doit accepter tout brouillage radioélectrique subi, même si le brouillage est susceptible d'en compromettre le fonctionnement.

## 7\_3 Environment (WEEE, Batteries and Packaging)

This product is labeled in accordance with European Directives 2002/96/EC concerning Waste Electrical and Electronic Equipment (WEEE) and 2006/66/EC concerning Batteries and Accumulators. Those provisions are requiring producers and manufacturers to become liable for take-back, treatment and recycling upon end of life of equipment and batteries.



The associated symbol means that WEEE and waste batteries must not be thrown away but collected separately and recycled.

Ingenico ensures that efficient collection and recycling schemes are set-up for WEEE and batteries according to the local regulation of your country. Please contact your resellers for more detailed information about the compliance solution in place for disposing of your old product and used batteries.

Packaging waste must also be collected separately to assure a proper disposal and recycling.

Please note that proper recycling of the electrical and electronic equipment and waste batteries will ensure safety of human health and environment.

---

● SEAMLESS PAYMENT

## 7\_4 Marking

Below, you will find the different symbols used on the product and its power supply.



The CE marking is the manufacturer's declaration that the product meets the requirements of the applicable EC directives. The CE mark is a mandatory conformity marking for certain products sold within the European Economic Area (EEA).



This TÜV symbol shows consumers at a glance that a product has been examined by neutral experts and that there are no safety concerns



The UL mark appears on end products and complete components suitable for factory and field installation. All of the products carrying these marks are covered by our Follow-Up Services program to determine that products continue to be manufactured in compliance with UL's safety requirements.



The RCM mark will be the only mark to indicate compliance with the Australian Communications and Media Authority's (ACMA) regulatory arrangements for telecommunications, radio, EMC and electromagnetic energy (EME).



The C-Tick is an identification trademark registered to the Australian Communications Media Authority (ACMA). The C-Tick mark signifies that the labelled electronic device is compliant with applicable electromagnetic compatibility (EMC) requirements




Waste of Electrical and Electronic Equipment (WEEE) symbol indicates that when the end-user wishes to discard this product, it must be sent to separate collection facilities for recovery and recycling. By separating this product from other household-type waste, the volume of waste sent to incinerators or landfills will be reduced and natural resources will thus be conserved.



This logo indicates that the product operates with an alternative voltage. This symbol is followed by the ratings (voltage and current for instance)

---

● SEAMLESS PAYMENT

 This logo indicates that the product operates with a continuous voltage. This symbol is followed by the ratings (voltage and current for instance)



Mark indicating a power supply meets the level VI requirements.



Double insulated or class 2 electrical appliances are products that have been designed in a way so as not to require a safety connection to electrical earth (These products must NOT have a safety connection to Earth).



Indoor use symbol.

\*This Document is Copyright © 2018 by INGENICO Group. INGENICO retains full copyright ownership, rights and protection in all material contained in this document. The recipient can receive this document on the condition that he will keep the document confidential and will not use its contents in any form or by any means, except as agreed beforehand, without the prior written permission of INGENICO. Moreover, nobody is authorized to place this document at the disposal of any third party without the prior written permission of INGENICO. If such permission is granted, it will be subject to the condition that the recipient ensures that any other recipient of this document, or information contained therein, is held responsible to INGENICO for the confidentiality of that information.

Care has been taken to ensure that the content of this document is as accurate as possible. INGENICO however declines any responsibility for inaccurate, incomplete or outdated information. The contents of this document may change from time to time without prior notice, and do not create, specify, modify or replace any new or prior contractual obligations agreed upon in writing between INGENICO and the user.

INGENICO is not responsible for any use of this device, which would be non-consistent with the present document.

All trademarks used in this document remain the property of their rightful owners."

## Your contact



[www.ingenico.com](http://www.ingenico.com)

28-32, boulevard de Grenelle, 75015 Paris - France / (T) +33 (0)1 58 01 80 00 / (F) +33 (0)1 58 01 91 35  
Ingenico - SA au capital de 47 656 332 / 317 218 758 RCS Nanterre

● SEAMLESS PAYMENT