

MP3 PLAYER



Index

1. Notice	1
2. Products	3
● System requirements	3
● Identifying the parts	4
3. Use of Audiocard	6
● Figures Description	6
● Functions	7
● Remote control	10
● Charging display when USB cable is connected	11
4. S/W installation	12
● Installing the USB driver	12
● Installing the USB downloader management program	17
5. Using the USB downloader management program	18
● Main window	18
● File download window	19
■ Toolbar	19
■ Details about toolbar	20
■ Popup menu	28
● Error messages and recovery	30
6. Troubleshooting	31
7. FAQ	32
8. Specification	34
9. Accessories/Sold Separate	35
10. Help	36

1. Notice

Warning

- To reduce the fire or electric shock hazard, never expose this product in the rain or humidity.
 - Unauthorized distribution of MP3 music files is against the copyright act.
- The Software in the offered installation CD-ROM can be used in private purpose.

Precaution on copyright

- No part of this document may be reproduced, transmitted, transcribed, stored in a retrieval system, or translated into any language or computer language, in any form or by any means without prior written permission. This manual and the information contained herein are protected by copyright.
- Copyright(c) 2001-2002 Etronics Corp. All rights reserved.**
- Check the copyright act related to recording music from a disc, radio or tape, according to the country that you using the unit in.

Limited warranty

- We the Etronics Corp. do not hold ourselves responsible for the loss or damages that can be taken place while downloading music files.

Limits for downloaded music file(s)

- The downloaded music file(s) on the audio card cannot be uploaded again in user's computer.

■ FCC INFORMATION

This equipment has been tested and found to comply with the limits for a Class B digital device, pursuant to Part 15 of the FCC Rules. These limits are designed to provide reasonable protection against harmful interference in a residential installation. This equipment generates, uses and can radiate radio frequency energy and, if not installed and used in accordance with the instructions, may cause harmful interference to radio communications. However, there is no guarantee that interference will not occur in a particular installation. If this equipment does cause harmful interference to radio or television reception, which can be determined by turning the equipment off and on, the user is encouraged to try to correct the interference by one or more of the following measures:

- Reorient or relocate the receiving antenna.
- Increase the separation between the equipment and receiver.
- Connect the equipment into an outlet on a circuit different from that to which the receiver is connected.
- Consult the dealer or an experienced radio/TV technician for help.

1. Notice

Note on Use

1. To prevent the battery from being discharged, remove the connector if this unit is not to be used for a long time.
2. Do not disconnect the audio card or USB cable while the USB downloader management program is in work.
3. The battery in the audio card is consumable, so the lifetime is shorter and shorter when charging and discharging is repeated. If the lifetime comes to half of first , buy a new one at our service center.
4. If other application programs occupy the PC's resource too much, the ability of download function may be lowered.

Warning

Fire electric shock or damage to this unit may occur under following condition

1. Never disassemble or modify this unit in any way. When repair service is needed, consult with your dealer.
2. Keep this unit free from moisture and water. Do not use with wet hands.
3. Avoid high temperature and direct sunlight.
4. Do not let foreign objects in this unit.
5. Do not use this unit in dusty or shaky place.
6. Do not drop or shock this unit or serious damage may occur.
7. Do not use benzene, thinner or other petroleum based products. Use a soft cloth.

This unit has been designed and manufactured to assure personal safety. But if the batteries are selled out by any reason, contact service personnel to replace your batteries. And if battery leakage occurs, put it away from eyes and children.

2. Products

● System requirements

- When using the USB downloader management program, the following hardware and software requirements are needed.

1. Hardware requirements



Intel Pentium 233MMX or higher



64MB RAM or higher



CD-ROM driver



An usable USB port

2. Software requirements

- Microsoft Windows 98 / Me / 2000 / XP



The USB downloader management program can be operated in the computer that has pre-installed operating system



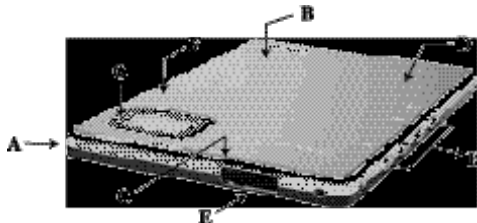
- Microsoft Internet Explorer (Version 5.5 or later)
- Macintosh and Linux system cannot be supported.

Notice: skipping can be happened according to the computer and the application program operating in.

2. Products

● Identifying the Parts

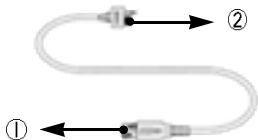
■ Audio card



- A. The exterior is designed as the slimmest thickness(5 mm) in existence.
- B. The unit has maximum 128 Mbyte memory according to the product class.
We offer powerful copyright protect function named COF™(Content Oriented File format) by using unique technology.
- C. By adopting 20 bit DAC, You can enjoy the best sound quality(S/N 90 dB, THD-D 0.07 %) through 6.5 mW/CH power output. MPEG Layer III can be decoded from 8 Kbps to 320 Kbps.
- D. By adopting the newest Li-Polymer battery, you can use this unit for about 8 hours in the maximum power output.
- E. Adopting the newest eSPI(extended Serial Peripheral Interface) technology, we can offer the most flexible user and unit interface as well as easy downloading from external device in the speed of 1 Mbps. Charging and outputting of sound are available through a specially designed 9 PIN connector.
- F. We adopted the smart card concept for the built-in Certification E2PROM (CE-E2PROM), that can offer user information and various personal services through the internet.
- G. We arrange the display briefly, so it shows necessary contents for users.
- H. We simplify the complex functions by integrating functions onto 4 keys.

2. Products

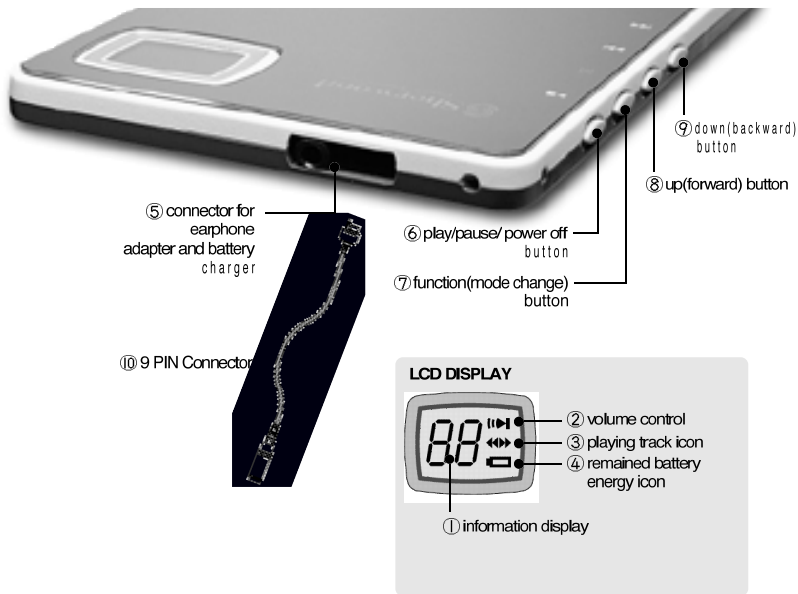
■ USB downloader



- A. After connecting cable ① to USB port of your PC, connect 9 PIN connector ② to Audio card.
Then you can charge it and download music files.
- B. It can be saved from user's PC into Audio card at the speed of 1 Mbps.
- C. Through the PC's USB power source, the built-in Li-Polymer battery of audio card can be charged, and about 1.5 hour after, it can be full-charged.

3. Use of Audiocard

● Figures Description



3. Use of Audiocard

■ Functions

● Play(Power on) / Pause / Power off

Play(power on)



Make sure that the plug (10) is connected to the connection terminal (5). Long press on the button (6). The track number is displayed and the track starts play after "1" and playing track icon is shown on the LCD screen.

※ If there is no stored music, "0" is displayed on the LCD screen.

PAUSE



Short press on button (6) during playing back pauses playing back at the moment.

Power off



Long(longer than 3 sec.) press on button (6) turns power off.(When you don't use the Audio Card for long hours, disconnect the 9 PIN connector from it. If not, the battery is discharged.)

The playing track number is still memorized even if the power is turned off.

● Mode changes

Mode setting



Starts from the playing track mode(3).

Each time press on button (7), the mode changes as button (2) volume control - (4) remained battery - (3) playing track in sequence and you can see it by displayed icon.

Track search

(Forward/Backward search)



This can search fastly the track you want.

If you want to search next/previous track while listening current one, in playing track mode (3), short press on button (8) or (9).

3. Use of Audiocard

Volume Control



Works only when icon ② is active, so press on button ⑦ once.

Then press on button ⑧ to increase volume level, while press on button ⑨ decrease volume level.

You can control the level by 0 ~ 20 steps. The level you choose is also stored after power off, but 0 level is not.

(note: Automatically returns back to track search mode after displaying the volume level for 5 seconds.)

Remained battery energy display



If you want to know the remained battery energy, short press on button ⑦ twice.

The icon ④ is displayed and you can see the remained battery energy by level 1 to 5. Immediately charge the battery when remained battery energy level displays "1".

(Note: Automatically returns back to track search mode after displaying the remained battery energy 1 second.)

※ If battery icon is displayed, please recharge your battery.


● Track Scan

Keep pressing on button ⑧ or ⑨ for about 2 seconds for fast-forwarding or rewinding. Track Scan shows its status by percentage.




(ex) while listening to track number 2, using Track Scan, moves from 3% to 95% of current track.

● Track Repeat (1 track repeat / section repeat / canceling repeat)

Press on button ⑦ for 2 seconds or so,  is displayed on LCD screen and the mode is changed to repeat mode.

In the repeat mode, button ⑧ is MOVE, ⑨ is SELECT, ⑦ is CANCEL.

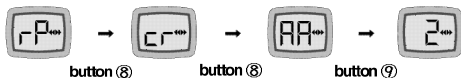
※ After setting the repeat mode, icon ③  flickers.

3. Use of Audiocard

1) 1 track repeat (AA mode)

- In the repeat mode, press on button ⑧ twice to move to mode AA.

Then press on button ⑨. (when canceling the repeat mode, select mode ㊦)



2) section repeat (Ab mode)

- In the repeat mode, press on button ⑧ three times to move to mode Ab.

Press on button ⑨ at start point(A) of repeat section.

Press again on button ⑨ at end point(b) of repeat section.



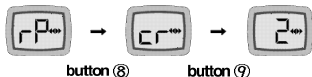
※ section repeat is possible within one track only.

3) canceling repeat

- This mode is used when canceling the current repeat mode

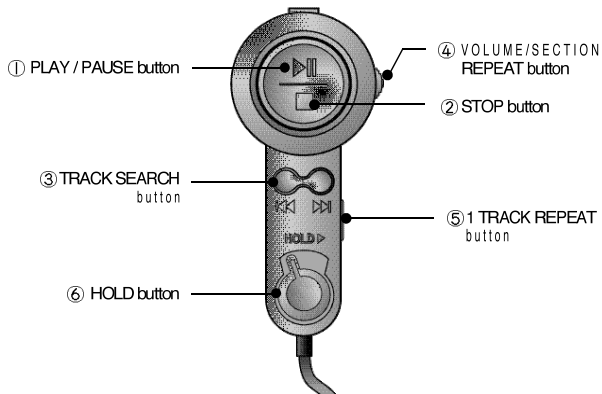
(1 track repeat / section repeat).

- In the repeat mode, press on button ⑧ to move to mode ㊦. Then press on button ⑨.



3. Use of Audiocard

● Remote control



- ① PLAY/PAUSE button : play the track, Pause the track.
- ② STOP button : stop the play.
- ③ TRACK SEARCH button : move the track number next/previous.
- ④ VOLUME/SECTION REPEAT button : move up/down to control volume. press on this, it is changed to repeat mode.
- ⑤ 1 TRACK REPEAT button (canceling repeat)
- ⑥ HOLD button : make this remote control unavailable.

3. Use of Audiocard

● Setup the repeat mode

- 1 track repeat (AA mode) : Press on button ⑤.
- Section repeat (Ab mode):
 - 1) Press on button ④ to move to Ab mode.
 - 2) Pull down the button ④ at start point(A) of repeat section.
 - 3) Push up the button ④ at end point(b) of repeat section.
3. Canceling repeat
When the repeat mode(1 track repeat / section repeat) is set, press on button ⑤ to cancel the repeat mode.

● Charging display when USB cable is connected

When connecting the USB cable to Audio card.

Charging now



Battery icon ④ is displayed when charging is on the way.

End of Charge

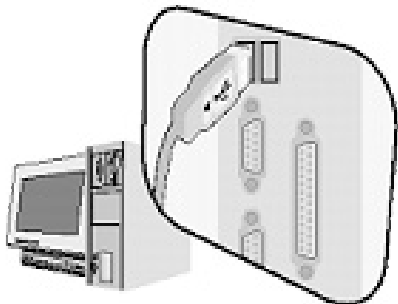


Battery icon ④ is disappeared when charging is finished.

4. S/W installation

● Installing the USB driver

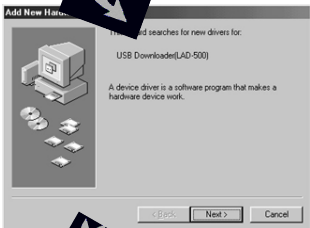
- Connect cable ① to USB port of your PC. Connect 9 PIN connector ② to Audio Card(in the page 5). USB driver is automatically installed by the function of USB hot-plugin.



- The USB driver installation process is somewhat different according to the operating system.
- When the operating system asks the appropriate driver, insert the installation CD in user's PC and click 'NEXT' - installation starts automatically.
- When the driver files are saved apart in the user's PC, select the 'Specify a location' and click 'NEXT'.

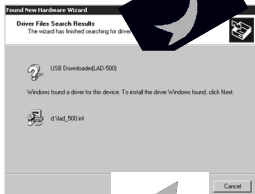
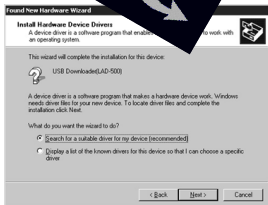
4. S/W installation

■ For Windows 98



4. S/W installation

■ For Windows ME/ 2000



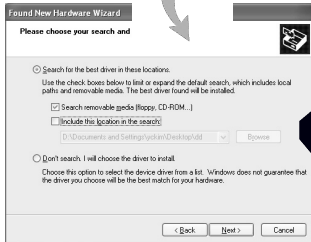
If the above three operating system ask appropriate drivers, select [Search for the best driver for your device (Recommended)].

Insert the installation CD in user's PC and click 'Next', select [CD-ROM drive] and click 'Next', make sure the driver's location and click 'Next'.

- installation starts automatically.

4. S/W installation

■ For Windows XP

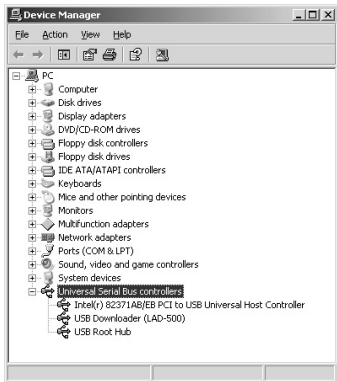


If Windows XP asks the appropriate drivers, select [Install from a list or specific location (Advanced)], insert installation CD in user's PC, and click 'NEXT'. Select [Search removable media (floppy, CD-ROM)] and Click 'Next' - installation starts automatically. Sometimes warning window can be displayed like above 3rd process, but this software has no problem to the operating system. So click 'Continue Anyway'.

When the driver files are saved apart in the user's PC, select the [Specify a location] and click 'NEXT'.

4. S/W installation

■ Check the installation of USB driver



If USB driver is installed successfully, “USB Downloader(LAD-500)” is shown in [Device Manager] as the picture above.

To Check the USB Driver:

- ▶ **Windows 98/ME** : Start -> Settings -> Control Panel -> System -> Device Manager
- ▶ **Windows 2000 (Professional)** : Start -> Settings -> Control Panel -> System -> Hardware -> Device Manager
- ▶ **Windows XP (Professional)** : Start -> Control Panel -> Performance and Maintenance -> System -> Hardware -> Device Manager

Delete the USB driver

- ▶ **Windows 98/ME** : Start -> Settings -> Control Panel -> Add or Remove Programs
- ▶ **Windows 2000 (Professional)** : Start -> Settings -> Control Panel -> Add or Remove Programs
- ▶ **Windows XP (Professional)**: Start -> Control Panel -> Add or Remove Programs

Select "Card System USB Driver(LAD-500)" in the list and Click Continue

4. S/W installation

- Installing the USB downloader management program

Open the file 'Setup.exe' in the installation CD. Then the USB downloader management program setup window is displayed.



After finishing installation automatically, shortcuts are created in the windows start menu and desktop.