



My Guard 86316 QUICK START GUIDE



Smart 1080P Wi-Fi Camera Pan/Tilt/Zoom/360

Product Description

1.List of Items

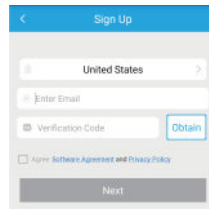
Camera	× 1	Power Cable	× 1
Wall Bracket	× 1	Screw Fitting	× 1
Power Adapter	× 1	Quick Start Guide	× 1

2.Exterior



User's Guide

1.Download APP and Account Registration



iPhone User(iOS system version≥9.2): Search "NexHT Cam" from APP Store.
Android User(Andr system version≥5.0): Search "NexHT Cam" from Play Store.
(if verification email not received, check the spam folder)

3. Plug In and Reset Camera

The camera will exam itself after being plugged in , after the examination is complete in about 20 seconds, the camera will play "di-di" sound and the indicator light will flash red slowly (once every 2 seconds) , which means the camera is ready to be added.

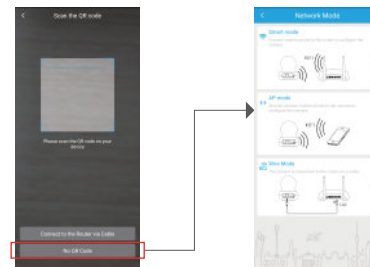
Smart Mode: When "di-di" sound is heard after briefly press the button (along with indicator light flashes red slowly, once every two seconds), the camera is now in Smart Mode (the default mode);

AP Mode: When "du~" sound is heard after briefly press the button (along with indicator light flashes red rapidly, twice per second), the camera is now

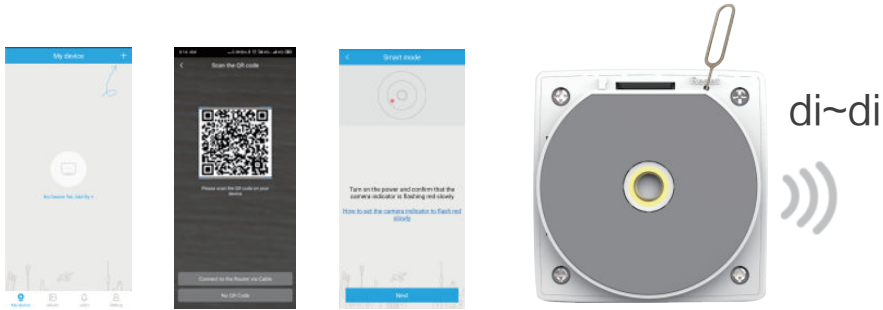


4. Add Camera

Open APP and go to My Device page, tap on "+" and select the device type as Camera. Then, scan the QR code on your device so that the APP can automatically select the appropriate Network Mode based on the QR code (Note: when the QR code cannot be identified, please tap on "No QR Code" and manually select either AP Mode or Smart Mode to configure the camera).



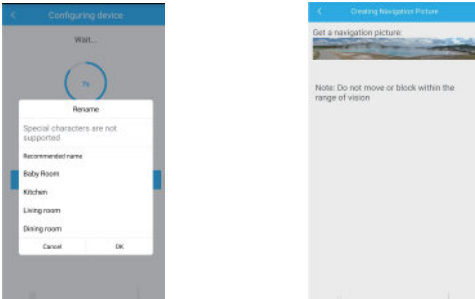
For reference, when APP chooses Smart Mode after scanning the QR code:
After scanning QR code, the APP automatically enters the Smart Mode, then the device needs also to be reset to Smart Mode (press the reset button to switch to Smart Mode, which the camera makes "di~di" sound and the indicator light flashes red slowly).



Enter the password for the Wi-Fi which the mobile phone is currently using, then turn up the volume on your phone and place it next to the device to add the camera.



After successfully adding the camera, camera name can be either customized or chosen from the recommended list. Then, a 360 degrees navigation picture can be created by the camera.



If failed to add the camera in Smart Mode (confirm that both Wi-Fi and Wi-Fi password are correct), then AP Mode can be used to configure the camera as directed:
On the failed-to-add page, tap on "Try other ways" and select AP Mode. At this time, the camera needs to be reset to AP Mode using the reset button.



After entering the correct Wi-Fi password, go to the hotspot settings page (this interface contains a 16-second hotspot selection guide video) and select hotspot named "IPC365_AP-XXXXXXXXXXXX", when successfully connected, the camera will be connected automatically when returned to the APP.



The camera can be used after configuring is complete. (When adding the camera, AP Mode could be used directly with the same steps above.)

Cloud Storage Features

The video is encrypted. The data transfer and storage services of this camera is all supported by AWS(Amazon Web Service), and shall be used without concerns.
This camera comes with life-long customized free Cloud-Storage service, as following:
Free (no subscription or monthly fees required):
Rolling 15 days EVCS (Events Video Cloud-Storage): Every 6 minutes, when the camera detects a motion it will be trigged and the camera will upload a 10s clip to AWS.
More advanced cloud-storage services are available for subscription:
Rolling 7/15/30 days AEVCS(Advanced Events Video Cloud-Storage): Every 10 seconds, when the camera detects a motion it will be trigged and the camera will upload a 10s clip to AWS.
Rolling 7/15/30 days CVCS(Continuous Video Cloud-Storage): The camera will continuously upload 10s clip to AWS without trigger.
More related to cloud storage services can be checked out on the Cloud-Storage in the APP(need to add camera).

Indicator Light Status

Light Status	Reference
Flashing Red Slowly (once every 2 seconds)	Ready to be added in smart mode.
Flashing Red Rapidly (twice per second)	Ready to be added in AP mode.
Steady Green	Camera connected to Wi-Fi and awaiting to connect to server.
Flashing Green Slowly	The camera is added successfully and currently in standby state.
Flashing Green Rapidly	User is watching monitored scene through the camera.