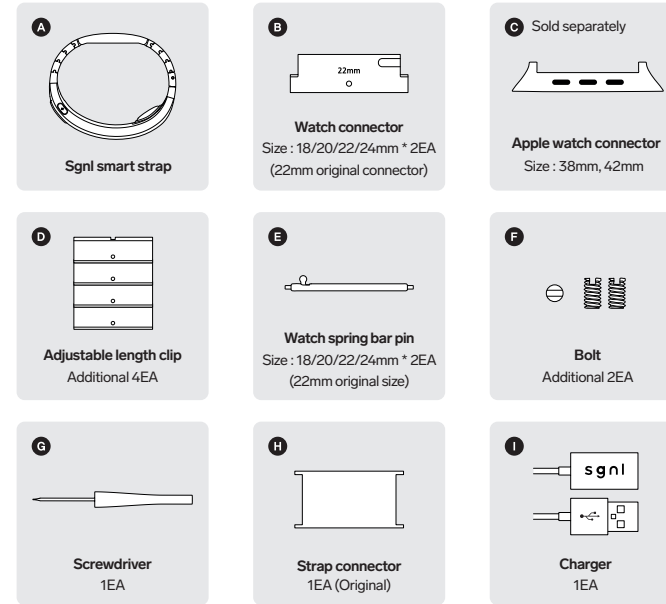
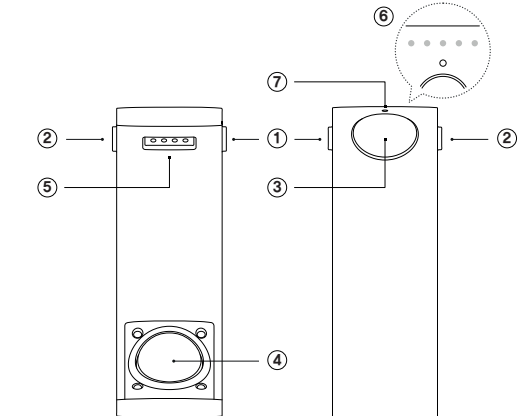


1. Parts



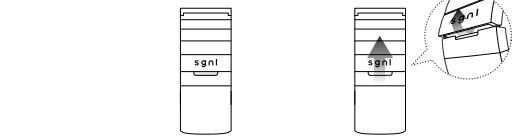
2. Names of components



- ① Volume down (-)
- ② Volume up (+)
- ③ Button
- ④ BCU (Body Conduction Unit)
- ⑤ Charging port
- ⑥ LED
- ⑦ Microphone

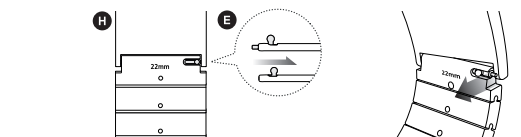
* The image and components may look different from the actual product.

3. Taking off the strap



1. Locate the groove on the strap. (Outward from the BCU ④)
2. Place your finger inside the groove and pull upwards to release.

4. Disconnecting the strap connector

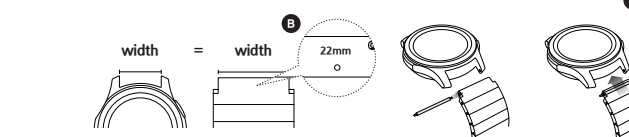


1. Pull the Spring bar pin ⑤ to the side to disconnect the Strap connector ⑧.
2. The Spring bar pin ⑤ will disconnect the closest part first.

* Refer to Step 6. Length Adjustment if the Strap Connector ⑧ will be used as initially packaged.

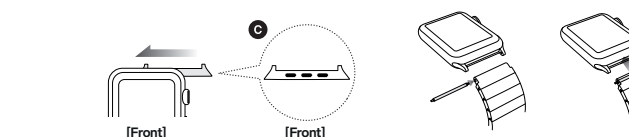
5. Connecting the watch (General watch)

Use Sgnl by binding it to your personal watch.



1. Check if the widths of the watch and the Watch connector ② are the same.
2. Insert the Spring bar pin ⑤ into the Watch connector ②.
3. Pull the Spring bar pin ⑤ to connect it with the watch and adjust on wrist accordingly.

5-1. Connecting the watch (Apple watch)

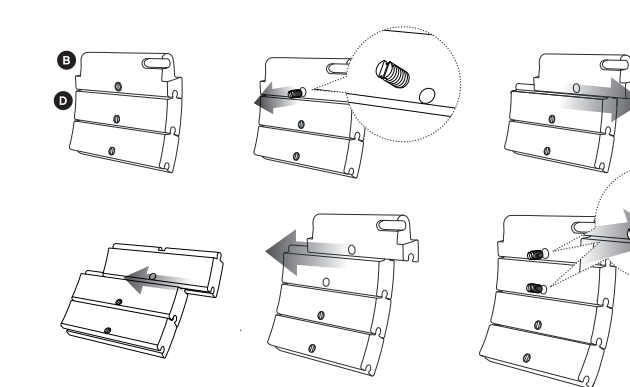


1. Push the Apple watch connector ③ with the Apple watch.
2. Use either a 20mm or 24mm Watch connector ② and connect to the Adjustable length clip ④.
3. Insert the Spring bar pin ⑤ into the Watch connector ② and pull to connect to the Apple Watch.

* The Apple watch connector ③ must be purchased separately.

6. Adjusting the length

Based on wrist size, extend or retract the length by using the Adjustable Length Clips ④.



1. Take off the Watch connector ② to adjust the size.
2. The screw on the Watch Connector ② is removed via the screwdriver ⑦.
3. The Watch Connector ② can be disconnected from the Adjustable Length Clip ④ by sliding it sideways.
4. The Adjustable Length Clips ④ can be added by sliding them.
5. Attach the Watch Connector ② sliding it.
6. Fasten the watch connector ② and Adjustable Length Clips ④ by using the screwdriver ⑦ to screw in the bolts.

* The BCU ④ must touch the wrist with applied pressure. Make sure the strap is not too loose.

7. Installation guide

Search for "Sgnl" in the Android Play Store or iOS App Store.

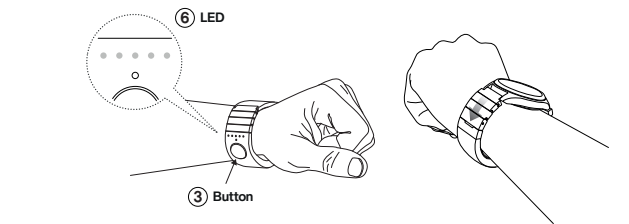


* Android Versions : Supported on 4.4 and above.
Recommended for 5.0 and above.

* iOS Versions : Supported on 8.0 and above, iPhone 5 and above,
and iPad 3 and above.

8. Wearing the device

Make sure the BCU component is in contact with the wrist.



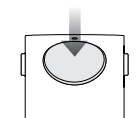
1. Make sure the Button ③ and LED ⑥ is facing towards the body.
2. Make sure the BCU ④ touches the wrist.

* Note : If the BCU does not touch or lightly touch the wrist, the sound quality and /volume may be affected.

9. Calling

When receiving a call, close the tragus with your finger to talk.

Press the Button ③.

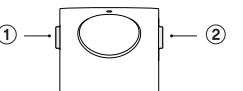


Correct finger placement

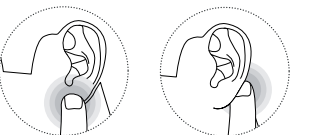


(O)

Use the volume buttons ①, ② to control the sound volume.



Incorrect finger placement



(X)

(X)

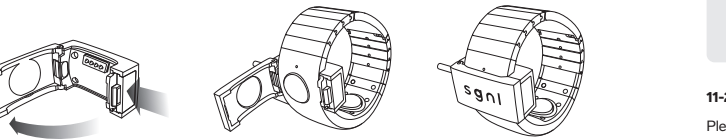
1. When an incoming call vibrates the wrist, press the Button ③ to answer the call.
2. Close your tragus with the finger to talk.
3. If the sound is too loud/ or low, use the volume buttons to control the volume.

* Note : Sound may leak when the volume is increased.

Due to slight variations of anatomy in individuals, the volume and sound quality may differ in each individual. We will continue to provide firmware updates to offer the best sound quality for all users.

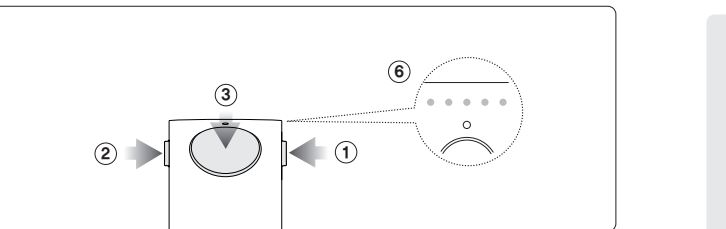
10. How to Charge

After purchasing, make sure the device is fully charged prior to use.



1. Press the side button on the Charger ① to open the cover.
2. Match the side spacing of the Charger ① with the volume buttons.
3. After closing the Charger ①, check the LED ⑥ to confirm that the device is charging.

11. How to restart and reset the device



11-1. Device Restart

If the device does not respond during use, follow the steps below.

1. Press Volume buttons ①, ② simultaneously for 3 seconds.
2. Release the buttons when the LED ⑥ turn off one by one.

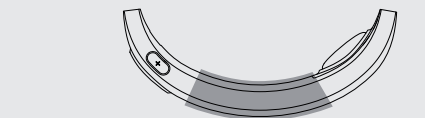
11-2. Device Reset (Device Initialization)

Please follow the steps below when switching to a new phone.

1. Press the Button ③ and Volume buttons ①, ② simultaneously for 7 seconds.
2. Release the buttons when the LED ⑥ alternate back and forth from the first light to the last light.
3. Press the Button ③ to turn on the device.

Safety Precautions

Please read and follow the safety instructions.



*The location indicated above is where the battery is loaded.
Be careful not to damage the battery or expose it to external forces.

WARNING

- Do not damage the battery or expose it to external forces.
- Please use the battery, accessories, and components in their intended manner.
- Make sure not to expose the charger, battery, or conductivity components to other elements (e.g. water, metal, etc.).
- Please contact customer service immediately if the product is broken or no longer working.
- Do not use the product while the battery is exposed.

The product can become damaged or cause bodily harm.

- Keep the product away from infants and pets.
- The battery life may shorten in extremely hot or cold temperatures.
- Do not use the product near flammable areas.
- Store the product in a dry areas.
- Do not use the product outside during lightning or thunderstorms.
- Please follow road safety laws when using this product while driving.

Waterproof and Dustproof Precautions

This product is both waterproof and dustproof. Please read and adhere to the following precautions regarding water/dustproof qualities.
The product may become damaged if the directions are not followed.

- Make sure the product does not come in contact with high water pressure.
- Do not wear the product while showering or swimming.
- If the product or hands are wet, wait until they are fully dried to use it.
- If wet, dry the product with a clean cloth. Rinse the product with clean water if it is wet and dirty and dry it off with a clean cloth. Problems with its function and appearance may arise.
- Please take note that if dropped or exposed to external forces, the water/dustproof functions of the product may become damaged.
- If the microphone or speaker becomes wet, call quality may decrease.
Dry off the product with a clean cloth before resuming use.
- The water/dustproof qualities were tested in a controlled environment.
Any situation outside this setting may not guarantee its protection.

FCC (Federal Communications Commission)

This equipment has been tested and found to comply with the limits for a Class B digital device, pursuant to Part 15 of the FCC Rules. These limits are designed to provide reasonable protection against harmful interference in a residential installation.

This equipment generates uses and can radiate radio frequency energy and, if not installed and used in accordance with the instructions, may cause harmful interference to radio communications. However, there is no guarantee that interference will not occur in a particular installation. If this equipment does cause harmful interference to radio or television reception, which can be determined by turning the equipment off and on, the user is encouraged to try to correct the interference by one or more of the following measures:

- Reorient or relocate the receiving antenna.
- Increase the separation between the equipment and receiver.
- Connect the equipment into an outlet on a circuit different from that to which the receiver is connected.
- Consult the dealer or an experienced radio/TV technical for help.

WARNING : This equipment may generate or use radio frequency energy. Changes or modifications to this equipment may cause harmful interference unless the modifications are expressly approved in the instruction manual. The user could lose the authority to operate this equipment if an unauthorized change or modification is made.

This device complies with Part 15 of the FCC's Rules. Operation is subject to the following two Conditions:

1. This device may not cause harmful interference, and
2. This device must accept any interference received, including interference that may cause undesirable operation.

Specification

Model Name	IM-S001	
Battery	3.7V 200mA Chargeable Lithium-ion Battery	
Input Power	5V 200mA	
Bluetooth	Version	4.2, Class 1
	Profile	HFP
	Transmission Frequency	2402 MHz ~ 2480 MHz

This device can be operated in at least one Member State without infringing applicable requirements on the use of radio spectrum

RF : 2402MHz ~ 2480 MHz / Max. RF output power : 5.23 dBm

Product Warranty

Innomdle Lab provides a product warrantyy for consumer item damage, exchanges, and refunds based on the statement below.

Product Name			
Date of Purchase			
Serial No.			
Customer Information	Name		Tel
	Address		

- The product warranty will be offered as written in the warranty statements.
- A warranty will be in effect on the day of purchase but must receive the date of purchase entry.
- Innomdle Lab is not responsible for any repairs, exchanges, or refunds until the flawed product is returned.

Contact customer service if the product becomes broken.

The consumer is responsible for all distribution costs except for any faulty components during the final transaction.

- Warranty : The warranty starts from the date of purchase. Please keep your transaction receipt.
If the purchase date cannot be confirmed, the warranty will last 3 months from the year when the product was created.

Service Announcement
· If the product breaks within 1 -year of purchase (free warranty) during normal use, it will be repaired free of charge.
· If the product is defective within 30 days after the purchase date, it will be exchanged with an identical model to the one originally purchased.

Service Charge Announcement
· Products broken due to the consumer's negligence include:
· Usage of parts not initially included in the package
· Damage due to falls
· Misuse of any component related to the adapter
· Attempting to fix the product at uncertified locations
· Damage due to gross alterations of the product
· Other Circumstances Include:
· Natural disasters (e.g. fire, flood, lightning, etc.)
· Purchasing used products or offering the product to others
· Exceeding the life of the warranty