

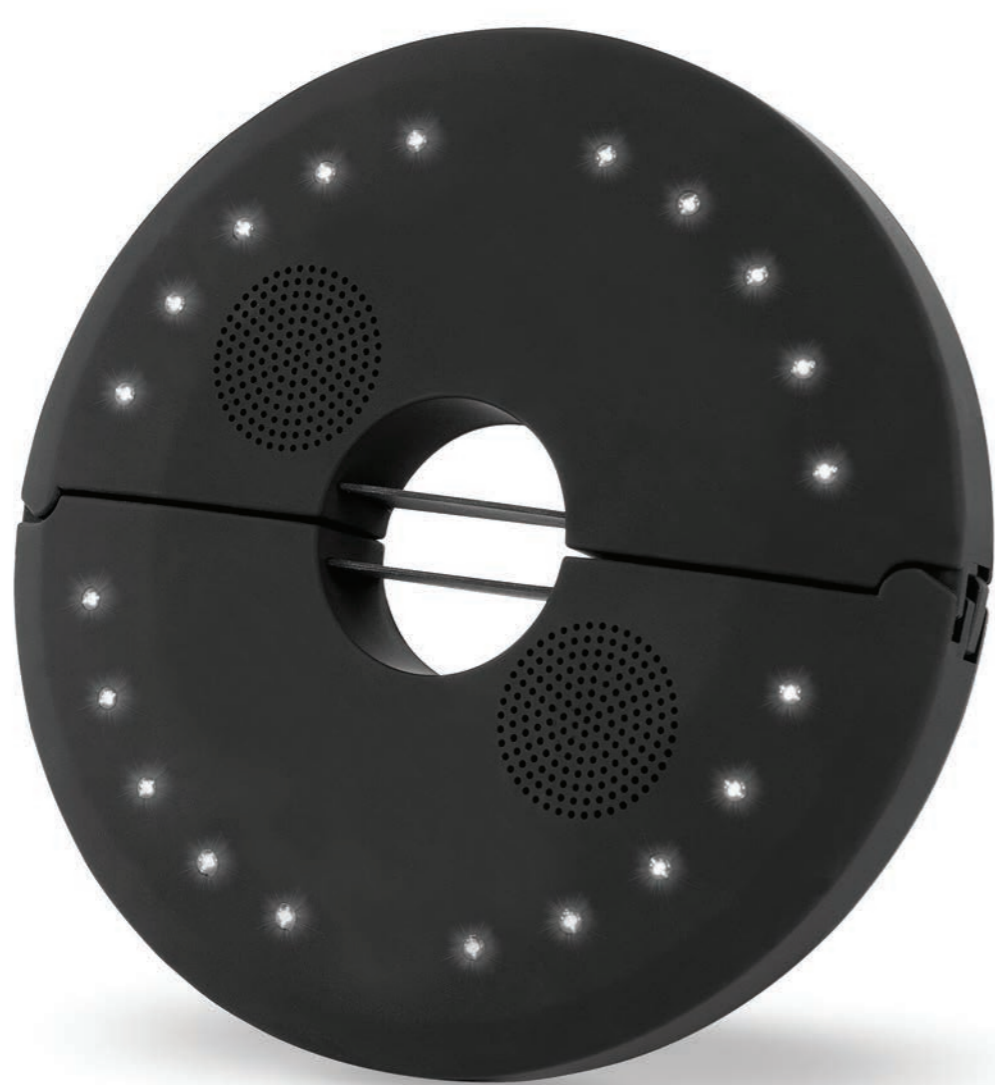
# DO NOT PRINT DIELINE

Paper Size: A4 (210mm x 297mm)



## Umbrella LED Speaker

Model: ITSBO-514



### Instruction Manual

Please read this instruction manual carefully before use and keep for future reference.

### SAFETY INSTRUCTIONS

- These products and their packaging are not toys; please keep out of reach of children.
- The remote control and charger are not waterproof and must be kept in a dry location at all times
- Only use the DC-USB Cable provided to charge this product.
- This product is designed to be used inside an umbrella that will protect it from direct sunlight and moisture.
- Never charge the product in Outdoor, water or rain; charge in a dry, indoor location.
- Disconnect the DC-USB Cable from charging device when not in use.
- Do not stand or jump on this product.
- Do not sit on this product if it is cracked or damaged.
- Keep the product away from chemicals and heat.
- Do not attempt to open the product.

#### Caution:

The built-in rechargeable battery is not replaceable. Do not remove or replace it, do not throw in the trash or in a fire. Do not dispose device in standard garbage disposal sites. Dispose of device at available Battery Recycling Sites after fully discharging battery. Not doing so may violate local disposal laws and regulations. Please refer to local regulations for proper battery disposal.

#### Battery precautions

- Never apply heat to the batteries or take them apart.
- Battery shall not be exposed to excessive heat such as sunshine, fire or the like.
- Do not throw the batteries in fire!
- Attention should be drawn to the environmental aspects of battery disposal.
- If the remote control is not going to be used for a long time, remove the battery to avoid damage caused by battery leakage corrosion.

#### WARNING

- Do not ingest the battery, Chemical Burn Hazard.
- This product (the remote control supplied) contains a coin/button cell battery. If the coin/button cell battery is swallowed, it can cause severe internal burns in just 2 hours and can lead to death.
- Keep new and used batteries away from children.
- If the battery compartment does not close securely, stop using the product and keep it away from children.
- If you think batteries might have been swallowed or placed inside any part of the body, seek immediate medical attention.

### SPECIFICATIONS

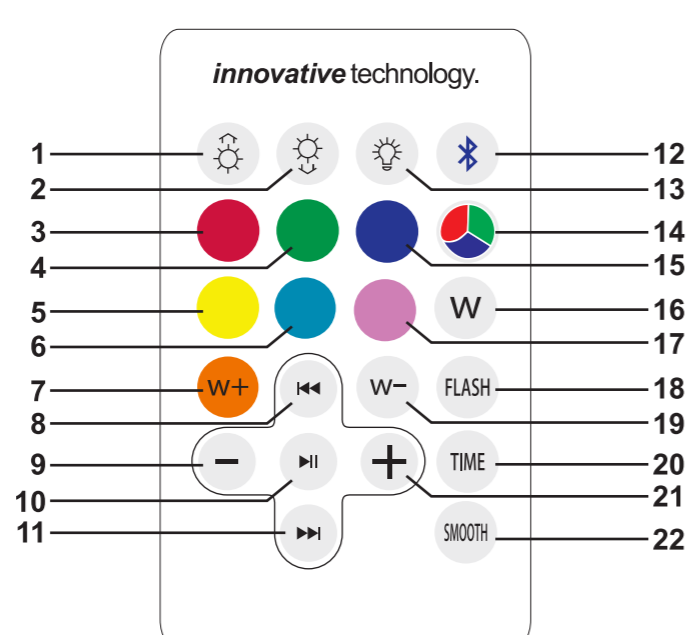
Ambient Temperature for Operation .....-14°C to 40°C (7°F to 104°F)  
LED ..... 20 x RGB, 0.18W per RGB, 7 Colors  
Battery ..... Rechargeable Lithium (3.7V, 1\* 2000mAh)  
Remote Control Battery.....CR2025 (3V)  
Bluetooth Range..... 10 meters (30 feet)  
Charging Time.....Approx. 5 Hours  
Operation Time ..... Approx. 4 to 4.5 hours (Max Volume + White LED Light)  
DC-USB Cable for Charging Input ..... 5V, 2A (Max)

NOTE: As a result of continual improvements, the design and specifications of this product are subject to change without notice.

Bluetooth is a registered trademark of Bluetooth SIG, Inc. Other trademarks and trade names are those of their respective owners.

Made in China.

### REMOTE CONTROL



- |                                |                                  |  |
|--------------------------------|----------------------------------|--|
| 1 Brightness Up                | 9 Volume Down                    | 17 Pink LED  |
| 2 Brightness Down              | 10 Play/Pause                    | 18 Flash - Dancing LED Colors<br>Along with Music        |
| 3 Red LED                      | 11 Next Track                    | 19 Warm LED -<br>Decrease White                          |
| 4 Green LED                    | 12 Bluetooth Connection          | 20 Timer   |
| 5 Yellow LED                   | 13 LED ON/OFF                    | 21 Volume Up   |
| 6 Light Blue LED               | 14 Manually Switch<br>LED Colors | 22 Smooth - Automatic Smooth<br>Transition of LED Colors |
| 7 Warm LED -<br>Increase White | 15 Blue LED                      |  |
| 8 Previous Track               | 16 White LED                     |  |

### GENERAL OPERATION

#### ON/OFF BUTTON

Turn ON/OFF the product by pressing the ON/OFF Button, the green LED on back of unit will light up.

#### BATTERY CHARGING

Before the product is used charge the battery for about 5 hours.

1. Connect the DC-USB cable (Included) to a computer USB port or any USB charger.
2. Insert the other end of the USB cable to the DC Port on the back of the unit.
3. The red charging indicator will light up (it will turn to green when it is fully charged).

#### WARNING:

- Keep the DC-USB cable out of reach of children
- Never attempt to open the light cabinet

### CONNECTING VIA BLUETOOTH

Make sure the Speaker is powered ON before connecting your device.

1. Press and Hold the Bluetooth Button (located on the Remote Control), there will be an audible activation beep once in Bluetooth Pairing Mode.
2. Select "ITSBO-514" in your device's Bluetooth settings Menu.  
Another audible beep will sound once your device is connected.
3. To disconnect your Bluetooth Device, Press and Hold the Bluetooth Button, there will be an audible deactivation beep sound that the device has been disconnected from Bluetooth Mode.

#### SETTING TIMER:

The Speaker's Timer function allows the product to automatically turn off after a designated time. In order to set the timer, press the Time Button (located on the remote control) once to change color, each color indicates a different timer duration. The Speaker will stay lit the LED color that is chosen for the entire Timer Duration. Follow the Guide Below:

LED Color	Timer Duration
Red	30 min.
Green	60 min.
Blue	90 min.
Yellow	120 min.
Light Blue	150 min.
Pink	180 min.

There are two ways to deactivate the timer:

1. Turn off the unit, by pressing the ON/OFF button.
2. Press the LED ON/OFF button + Bluetooth button at the same time on remote control.

#### REPLACING REMOTE CONTROL BATTERIES:

- Remove the old battery by pressing the tab on the side of the battery cover and then sliding it out from the remote control.
- Take notice of the positive (+) and negative (-) direction of the battery.  
Make sure that the new battery (CR2025) is inserted the right way.
- Dispose of the old battery responsibly.

#### ATTACHING UMBRELLA LED SPEAKER TO UMBRELLA

- The Umbrella LED Speaker can be attached to Umbrella poles up to 2" Cantilever umbrella light adapters.
- Open the umbrella LED Speaker by holding the device firmly with one hand and then release the lock on bottom of unit with the other hand.
- Open up the Umbrella LED Speaker and clasp around the mid pole. Flip the lock to close.

NOTE: We recommend fully charging the device before you attach to umbrella.

### IMPORTANT INFORMATION

#### FCC Statement

This device complies with Part 15 of the FCC Rules. Operation is subject to the following two conditions: (1) This device may not cause harmful interference, and (2) this device must accept any interference received, including interference that may cause undesired operation.

NOTE: This equipment has been tested and found to comply with the limits for a Class B digital device, pursuant to Part 15 of the FCC Rules. These limits are designed to provide reasonable protection against harmful interference in a residential installation. This equipment generates uses and can radiate radio frequency energy and, if not installed and used in accordance with the instructions, may cause harmful interference to radio communications. However, there is no guarantee that interference will not occur in a particular installation. If this equipment does cause harmful interference to radio or television reception, which can be determined by turning the equipment off and on, the user is encouraged to try to correct the interference by one of the following measures:

- Reorient or relocate the receiving antenna.
- Increase the separation between the equipment and receiver.
- Connect the equipment into an outlet on a circuit different from that to which the receiver is connected.
- Consult the dealer or an experienced radio/TV technician for help.

WARNING: Any changes or modifications not expressly approved by the party responsible for compliance could void the user's authority to operate this equipment.

This equipment should be installed and operated with a minimum distance of 20 cm between the radiator and your body.

#### CALIFORNIA PROP 65 WARNING

"WARNING" This product contains chemicals known to the State of California to cause birth defects or other reproductive harm. For more information on these regulations and a list of chemicals, log on the following website address: <http://www.oehha.ca.gov/prop65.html>

NOTE: This user manual has provided proper instructions to the users of the device, as well as usage restrictions, including the limits of exposure durations. The device is designed for reliable performance, and the user manual states detailed installations, proper operations, as well as special usage conditions, which comply with SAR and RF field strength limits. Users of this product should carefully study the user manual before using this device.

#### INDUSTRY CANADA:

This equipment complies with Industry Canada license —exempt RSS standard(s). Operation is subject to the following two conditions: (1) this device may not cause interference, and (2) this device must accept any interference, including interference that may cause undesired operation of the device.

This equipment should be installed and operated with a minimum distance of 20 cm between the radiator and your body.

Le présent appareil est conforme aux CNR d'Industrie Canada applicables aux appareils radio exempts de licence. L'exploitation est autorisée aux deux conditions suivantes : (1) l'appareil ne doit pas produire de brouillage, et (2) l'utilisateur de l'appareil doit accepter tout brouillage radioélectrique subi, même si le brouillage est susceptible d'en compromettre le fonctionnement.

Cet équipement doit être installé et utilisé à une distance minimale minimale de 20 cm entre le radiateur .

### WARRANTY

#### Innovative Technology Electronics LLC.

Limited Warranty: 90 Days Labor, One Year Parts

Innovative Technology Electronics LLC. (IT) warrants the product to be free from "Defects" in materials under normal use for a period of "One Year" from the date of the original purchase. The Warranty is "Not" transferable. IT agrees, within the initial "90 Day" period, to repair or replace the product if it is determined to be defective at "No Charge". It is further agreed that IT will cover the cost to repair or replace damaged "Parts" only for a total period of "One Year" from the date of the original purchase. The warranty does not cover cosmetic damage, antennas, AC cords, cabinets, headbands, ear-pads, or damage due to line power surges, connection to improper voltage supply or settings, misuse, mishandling, accident, acts of God or attempted repair by an unauthorized service agent.

To obtain service, the purchaser MUST present an original sales receipt / proof of purchase. Please contact us at [www.victrola.com](http://www.victrola.com) to request an RMA (Return Material Authorization) number to return products for service or replacement. Returns without an RMA number on the package will be refused and returned to sender. Upon receipt of the returning item and our full inspection (IT) may issue a replacement to customer for the same item or of one that has equivalent value and features. To return an item, supply full name, return address, phone number, item purchased, receipt of purchase and reason for return to obtain RMA number.

All returns must be in the original packaging or reasonable substitute to prevent damage. Customer "Must" include full name, shipping address and telephone number inside of package. No return will be shipped back to a PO Box or APO address.

- Please include your check or money order in the amount of:
- USD \$5.00 for items \$10.00 to \$39.99 (Price Paid Per Unit)
  - USD \$10.00 for items \$40.00 to \$99.99. (Price Paid Per Unit)
  - USD \$16.00, for items \$100.00 and up. (Price Paid Per Unit)
  - Shipping fees are non-refundable

to be payable to Innovative Technology Electronics LLC. (for handling and return shipping charges) (IT) will not be responsible for delays or unprocessed claims resulting from a purchaser's failure to provide any / all of the necessary information. Send all inquiries or RMA request via our website [www.victrola.com/pages/technical-support](http://www.victrola.com/pages/technical-support).

Innovative Technology Electronics LLC.

1 Channel Drive  
Port Washington, NY 11050  
Toll free: 1-877-483-2497

Website for support: [www.victrola.com/pages/technical-support](http://www.victrola.com/pages/technical-support)

There are no express warranties except as listed above. REPAIR OR REPLACEMENT AS PROVIDED UNDER THIS WARRANTY IS THE EXCLUSIVE REMEDY OF THE CUSTOMER. (IT) SHALL NOT BE LIABLE FOR ANY INCIDENTAL OR CONSEQUENTIAL DAMAGES FOR BREACH OF ANY EXPRESS OR IMPLIED WARRANTY ON THIS PRODUCT EXCEPT TO THE EXTENT PROHIBITED BY APPLICABLE LAW. ANY IMPLIED WARRANTY OF MERCHANTABILITY OR FITNESS FOR A PARTICULAR PURPOSE ON THIS PRODUCT IS LIMITED IN DURATION TO THE DURATION OF THIS WARRANTY.

Some states do not allow the exclusion or limitation of incidental or consequential damages, or limitations on how long an implied warranty lasts, so the above exclusions or limitations may not apply to you. This warranty gives you specific legal rights and you may also have other rights, which vary from state to state.