

# Windows 7 Mobile Broadband Quick Start Guide

You can connect to the network using Windows 7 VAN (View Available Network) UI.

## Before Starting Mobile Broadband Connection

### I. SIM Purchase

In order to use your computer to connect to the Internet, you must have a valid GSM or 3G data-enabled SIM Card. SIM Card can be purchased from various telecommunication operators.

### II. SIM Activation

SIM card must be activated before you can connect to the Internet. Usually, SIM activation is done at the time of purchase. If your SIM was not activated when you purchased it, please contact the appropriate telecom operators for help.

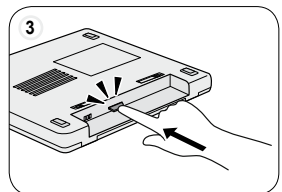
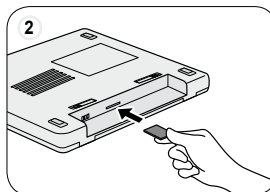
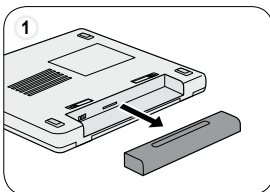


When you call for SIM activation, you will need to quote two numbers "IMEI" and "ICCID." "IMEI" number can be found at the bottom of your computer. For "ICCID" number, please refer to purchased SIM.

\* IMEI label location may vary depending on model.

### III. SIM Insertion


Please insert SIM card before you power on the computer.

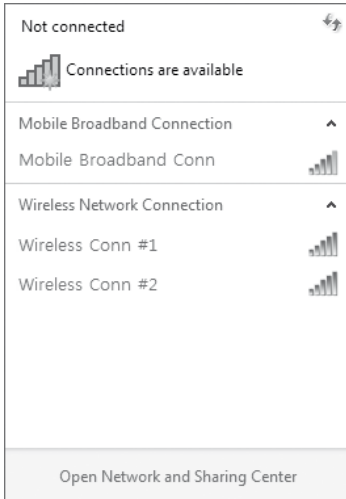


System must be turned off when SIM card is inserted or removed. Otherwise, SIM card will not work correctly.

SIM card slot may look differently and location may differ.

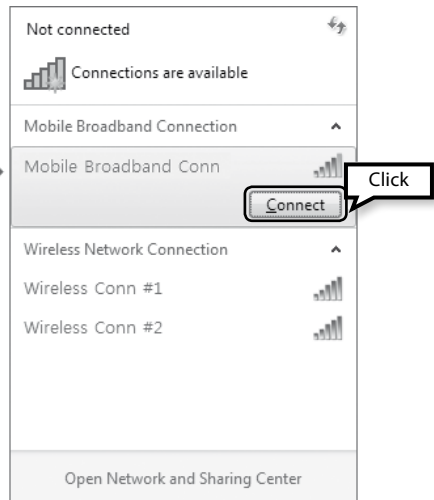
# Start Mobile Broadband Connection

- 1 Click on VAN UI icon  in the system tray-bar on Windows 7.
- 2 Windows 7 VAN UI is displayed and the available Mobile Broadband Connection is listed like as the following.



If any available connection is not listed in the Mobile Broadband Connection, please check if the SIM card is correctly inserted.

- 3 Click on the connection name and then "Connect" button to connect to the network.



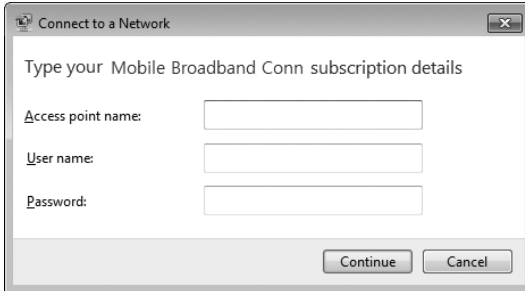
- 4 The network connection is established and Internet access is available.



# Creating New Profile

If the profile for the inserted SIM card does not exist, you need to create a new profile to connect to the network.

- 1 If the following window is displayed when you click on the connection name and then "Connect" button, you need to create a new profile.



- 2 Enter the Access point name (if required, User name and Password also) about your service provider.
- 3 Proceed with the next steps.
- 4 Network connection is established and Internet access is available.

# Enable/Disable Wireless WAN

Follow instructions below to enable or disable wireless WAN.

## 1. Fn + F12



- From keyboard, press **Fn + F12** to enable/disable wireless WAN.

# FAQ

## **Why do I keep losing my connection?**

This may be due to interference caused by other devices like cordless phones, microwave ovens and other 2.4GHz band devices.

## **Why can't I connect to Internet?**

You may not be able to establish connection to Internet when you have set incorrect profile. Refer to your SIM card's service provider and obtain correct APN / User name / Password / PhoneNumber. Then, select proper profile or create a new profile according to the obtained information.

## **Why do I get a slow connection while I am using LTE?**

LTE is a shared data service. You may experience slower connections when several users in the same area are accessing the LTE service.

## **I entered the wrong PIN a few times. Why can't I use my device anymore?**

If you enter the wrong PIN three times, your SIM card locks automatically. To unlock the card, you must enter a PUK which is provided by service provider at the time of purchase. If you enter the wrong PUK ten times, SIM card will no longer work.

## **I pressed Fn+F12 to enable/disable wireless WAN. Why isn't wireless WAN turned on/off ?**

**Easy Display Manager** should be installed in order to enable/disable wireless WAN. Check if **Easy Display Manager** is installed in your system by going to **Start > Control Panel** and clicking on **Uninstall a program**. To install **Easy Display Manager**, go to **Start > Samsung > Samsung Recovery Solution** to launch **Samsung Recovery Solution**, select **System Software > System Software Installation** to list available software, then look for **Easy Display Managers**.