

7. **Silence Mode:** When the detector alarm, the user could press the test switch to get into silence mode to turn off the alarm temporarily but red LED light will flash continuously. The silence function will automatically turn into normal operation if the smoke concentration around the detector is still at alarming level after 10 minutes of silence mode.
8. **Group-call type:** If one detector was triggered, all other smoke detectors will enter the alarm mode at the same time.

Federal Communications Commission Statement

This equipment has been followed and found to comply with the limits for a Class B digital device, pursuant to Part 15 of the FCC Rules. These limits are designed to provide reasonable protection against harmful interference in a residential installation. This equipment generates, uses, and can radiate radio frequency energy and, if not installed and used in accordance with the instruction, may cause harmful interference to radio communications. However, there is no guarantee that interference will not occur in a particular installation. If this equipment does cause harmful interference to radio or television reception, which can be determined by turning the equipment off and on, the user is encouraged to try and correct the interference by one of the following measures:

- Reorient or relocate the receiving antenna,
- Increase the separation between the equipment and receiver,
- Connect the equipment into an outlet on a circuit different from that to which the receiver is connected.

Consult the dealer or an experienced radio/TV technician for help.

This device complies with Part 15 of the FCC Rules. Operation is subject to the following two conditions: (1) this device may not cause harmful interference, and (2) this device must accept any interference received, including interference that may cause undesired operation.

FCC Caution: Any changes or modifications not expressly approved by the party responsible for compliance could void the user's authority to operate this equipment.

Limited Warranty

Vision Guarantees that every wireless smoke detector is free from physical defects in material and workmanship under normal usage for one year from the date of purchase. If the product proves defective during this one-year warranty period, Vision will replace it

Smoke 418CA	V0	1060828	
----------------	----	---------	--

free of charge. Vision does not issue any refunds. This warranty is extended to the original end user purchase only and is not transferable. This warranty does not apply to : (1) damage to units caused by accident, dropping or abuse in handling, or any negligent usage; (2) units which have been repaired, taken apart, or modified by an authorized personnel; (3) units not used in accordance with instruction; (4) damages exceeding the cost of the product; (5) transit damage, initial installation costs, removal cost, or reinstallation cost.

For information on additional devices, please visit us at www.instantcare.com

Installation & Operation Manual

Smoke 418CA

Wireless Smoke Detector

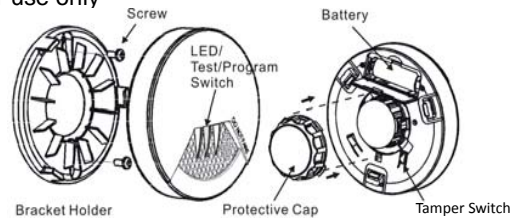
Introduction

This is a supervised, wireless, smoke detector for use with Alarm systems. If the detector detects a certain density of smoke then the horn of smoke detector will sound and will send the signal to the control panel. For Smoke 418CA, once detector triggered, then it will call all other smoke detectors to sound together (group call)

For completed home security system, please refer to wireless home security & medical help system.

Product Description and Specification

*** For indoor use only ***



Specification:

Frequency Range: 418MHz
 Operating Range: Up to 100 feet line of sight
 Operating Temp.: -10°C~ 50°C (14°F~122°F)
 Battery: Panasonic CR123A * 1PC

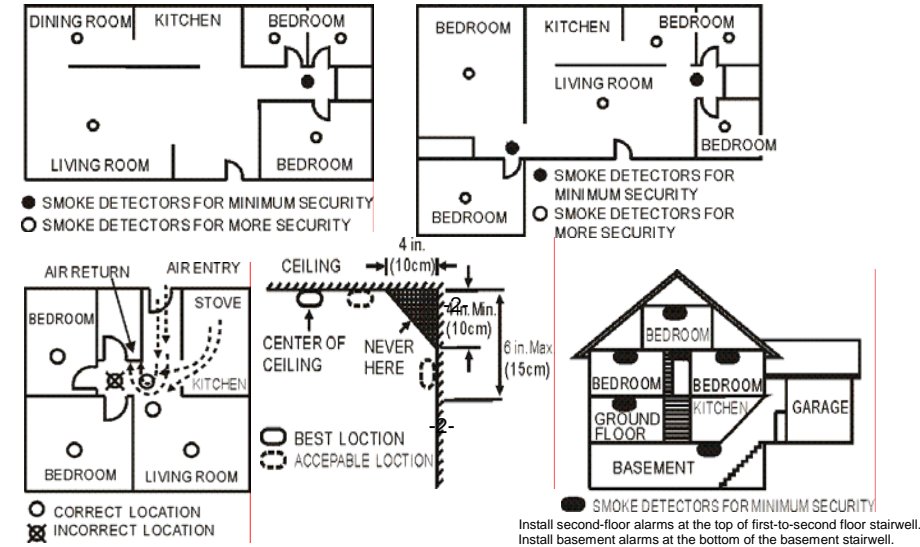
Package Content:

1pc Smoke 418CA
 Smoke Detector
 1pc Bracket Holder
 1pc Plastic Anchor &
 2pcs Screw
 1pc CR123ALithium
 Battery
 1pc Installation &
 Operation Manual

Installation

1. Remove the bracket from the detector by rotating it counter-clockwise.
2. Place the bracket where you are going to install the detector. In each of key hole slots, draw a mark to locate plastic anchor and screw. Using a 3/16-inch (5mm) drill bit, drills two holes at the marks and insert plastic anchor, and attached the bracket by using the screws.
3. Before insert the battery, put home security controller into learning mode.
4. Open the battery cover to insert the battery then press the program switch for 3 seconds. After that, the detector will include into the system. Fix the detector with bracket by rotating it clockwise.

5. Suggestion of the Smoke Detector Location:



Operation

1. **Stand-by Mode:** The Red LED flashes one time every 6 minutes.
2. **Alarm Mode (It's the status when the alarm is triggered.):** If a certain density of smoke is detected, an audible alarm with 3 beeps will occur. The red LED will flash continuously and rapidly. Meanwhile, the smoke detector will send an alarm report to the control panel.
3. **Error Mode:** If the smoke detector beep and yellow LED flash three times every 43 seconds, it indicates the smoke detector is not working properly. Please require to repair or service.
4. **Low battery warning Mode:** The yellow LED will flash once every 43 seconds with a short "beep" sound. The user needs to change the battery to disarm the low battery warning. Meanwhile, the detector will send an alarm report to the control panel.
5. **Testing Mode:** After inserted the battery, by pushing test switch for about 3 seconds to enter the testing mode. The Red LED will flash once every 11 seconds. The detector will auto-quit testing mode after 10 minutes or push test switch again to quit testing mode.
6. **Self-Protection Mode: 1)** If the detector removed from the bracket, the detector will be triggered, the yellow LED will solid on and emit alarm sounds continuously till the detector is mounted back to the bracket. **2)** The user should mounted the detector back to the bracket in 3 minutes after battery is installed, otherwise it will be also triggered, the yellow LED will solid on and emit alarm sounds continuously till the detector is mounted back to the bracket.