



**BT 70K**  
**Bluetooth® Hands-free Car Kit**

**User Manual**

<http://www.abe-hk.com>

**Table of Content**

I. Profile and Functions.....1  
 I-1 Profile.....1  
 I-2 Functions.....2  
 II. How to Use! .....3  
 II-1 Installation of the Hands-free Car Kit .....3  
 II-2 Turn on the Hands-free Car Kit.....4  
 II-3 Pair the Hands-free Car Kit with Your *Bluetooth* Mobile Phone.....4  
 II-4 Establish *Bluetooth* Link.....5  
 II-5 Answer an Incoming Call.....5  
 II-6 Transfer Calls between This Hands-free Car Kit and Your *Bluetooth* Phone...5  
 II-7 Make a New Call by Using Voice Dialing.....6  
 II-8 Mute the Microphone.....7  
 II-9 End a Call.....7  
 II-10 Reject a Call.....7  
 II-11 Redial Last Dialed Number.....7  
 II-12 Adjust the Speaker Volume.....7  
 II-13 Turn off the Hands-free Car Kit.....8  
 III. Maintenance and Safe Use .....8  
 FCC Interference Statement.....9  
 Declaration of conformity.....10

**I-2 Functions (please refer to Fig.1)**

- **Volume Down (S3)**
  - ⊙ Redial the last dialed number
  - ⊙ Decrease the speaker volume
- **LED**
  - ⊙ There are two LED colors (green and red) to indicate the state of this Car Kit.
- **On/Off (S1)**

If you press S1, you can:

  - ⊙ Switch on and Off
  - ⊙ Pair
  - ⊙ Answer a new call
  - ⊙ Reject a call
  - ⊙ Make a new call using voice dialing
- **Volume Up (S2)**
  - ⊙ Increase the speaker volume
  - ⊙ Mute/un-mute the microphone
- **Power Connector**
  - ⊙ Connect the Car Kit with the cigarette lighter and power the Car Kit.

**II. How to Use (e. g. Nokia 3650 or equivalent models)**

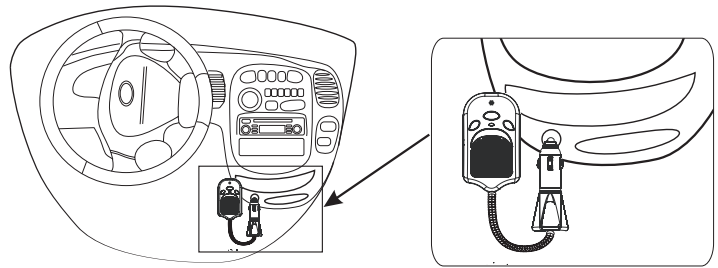


Fig.2

**II-1 Installation of the Hands-free Car Kit (please refer to Fig.2)**

Thank you for buying the Abe BT 70K, *Bluetooth* Hands-free Car Kit. Whenever you use the Hands-free Car Kit, turn on the electrical system of your car and plug the Car Kit into the cigarette lighter socket in your car to get power. Tilt and adjust the flexible shaft to a desired position for easy communication.

**I. Profile and Functions**

**I-1 Profile (Fig.1)**

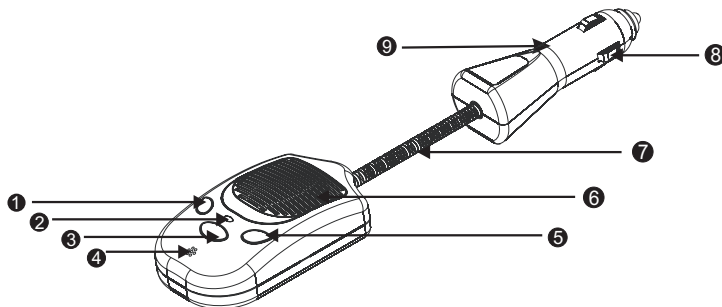


Fig. 1

- |                        |                    |
|------------------------|--------------------|
| 1. Volume Down (S3)    | 6. Speaker         |
| 2. LED                 | 7. Flexible Shaft  |
| 3. On/Off ( S1)        | 8. Spring          |
| 4. Built-in Microphone | 9. Power Connector |
| 5. Volume Up (S2)      |                    |

**II-2 Turn on the Hands-free Car Kit**

If the Hands-free Car Kit is powered off, press and hold S1 for 4 seconds. A low tone followed by a high tone will indicate the hands-free Car Kit has turned on. At the same time, Green LED will flash for a second. And then, green LED will keep on flashing every 3 seconds.

**II-3 Pair the Hands-free Car Kit with Your *Bluetooth* Mobile Phone**

- 1. Put the hands-free Car Kit in pairing mode**

When the hands-free Car Kit is powered off, press and hold S1 for 8 seconds. In the first 4 seconds, a low tone followed by a high tone will indicate the hands-free Car Kit has turned on. At the same time, Green LED will flash for a second. In the 2nd 4 seconds, a high tone will occur. Then the red and green LEDs will flash alternatively, which indicates the hands-free Car Kit has entered into the pairing mode.
- 2. Put your *Bluetooth* mobile phone in pairing mode**
  - 2.1 Follow the operation manual of your *Bluetooth* mobile phone to start the pairing process. Typically, this has to be done by going to a setup or connect menu and then selecting the options to discover *Bluetooth* devices. *Bluetooth* may take several seconds to establish a connection.
  - 2.2 Your phone's display will indicate that it has found the new device "BT 70K" and asks if you want to pair it. You should confirm this. The phone's display would demand a passkey or PIN, then you can enter a sequence of "0000".

### 3. Pair the hands-free Car Kit with your Bluetooth mobile phone

The green LED of hands-free Car Kit will flash every 3 seconds indicating successful pairing. Usually the phone will also ask whether you want to change the Car Kit's name. We recommend you should approve the name of "BT 70K" and do not change it.

Notice: If pairing does not occur as expected, turn off the hands-free Car Kit and your phone, then wait for 10 seconds. Turn them on again and repeat from Step 1 to Step 3.

### II-4 Establish Bluetooth Link

After pairing, the mobile phone will show "connect", then please select "YES" to establish the link. Now you are ready to make and answer calls on the hands-free Car Kit.

Notice: For other phones, please follow their operation manuals to establish the link!

### II-5 Answer an Incoming Call

When an incoming call is present, the hands-free Car Kit will ring. Press S1 and you can answer the call. The green LED will continue to flash once a second while the call is in session.

### II-6 Transfer Calls between This Hands-free Car Kit and Your Bluetooth Phone

When you are in session, calls can be transferred from your Bluetooth phone to the hands-free Car Kit and vice versa.

5

1. From Bluetooth phone to the Car Kit  
Press S1 once, the call will be transferred to the Car Kit.
2. From Car Kit to the Bluetooth Phone  
Please follow the operation manual of your phone.

### II-7 Make a New Call by Using Voice Dialing

1. When using a Bluetooth mobile phone:
  - 1.1 Press S1 on the hands-free Car Kit shortly  
Notice: Make sure that the voice dialing function is probably set up in the mobile phone and it is within the range of the hands-free Car Kit.
  - 1.2 Put through the call  
After the beep tone on the hands-free Car Kit, you can make a voice dial by saying the name of the person on the hands-free Car Kit. The call will be connected in a few seconds.
2. When using a mobile phone without Bluetooth built-in and requiring a Bluetooth dongle:
  - 2.1 Press S1 on the hands-free Car Kit shortly.  
Notice: Make sure that the voice dialing function is probably set up in the Mobile phone and it is within the range of the hands-free Car Kit.
  - 2.2 Put through the call  
After the beep tone on the hands-free Car Kit, you can make a voice dial and the call will be connected in a few seconds.

6

### II-8 Mute the Microphone

1. To mute the microphone  
Press S2 for about 2 seconds and a beep tone will indicate the microphone is muted. A periodic beep tone will be heard while the mute function is active.
2. To un-mute the microphone  
When the microphone is muted, press S2 for about 2 seconds. Then the mute function will end and the periodic beep tone will stop.

### II-9 End a Call

While a call is in session on the hands-free Car Kit, press S1 and you will disconnect the call. After the call is disconnected, the green LED will flash normally.

### II-10 Reject a Call

When the hands-free Car Kit is ringing, press S1 until you hear a long beep tone.

### II-11 Redial Last Dialed Number

To redial the last dialed number, press S3 for 2 seconds. Short low tones will indicate an attempt to redial.

### II-12 Adjust the Speaker Volume

While a call is in session, pressing and releasing S2 will increase the speaker volume, and pressing and releasing S3 will decrease the speaker volume.

7

### II-13 Turn off the Hands-free Car Kit

When the hands-free Car Kit is on, press and hold S1 for 3 seconds. A high tone followed by a low tone will indicate that the Car Kit is powered off. Red LED will turn on for a second. At last LED will turn off when the Car Kit is powered off.

### III. Maintenance and Safe Use

- ⊙ Use dry cloth to clean hands-free Car Kit!
- ⊙ Do not expose the Car Kit to liquid or moisture!
- ⊙ Do not expose the Car Kit to fire or open flames!

Note:

BQB, CE and FCC approved

The Bluetooth word mark and logos are owned by the Bluetooth SIG, Inc. and any use of such marks by In-Tech Electronics Ltd is under license. Other trademarks and trade names are those of their respective owners.

8

## Federal Communication Commission Interference Statement

This equipment has been tested and found to comply with the limits for a Class B digital device, pursuant to Part 15 of the FCC Rules. These limits are designed to provide reasonable protection against harmful interference in a residential installation. This equipment generates, uses and can radiate radio frequency energy and, if not installed and used in accordance with the instructions, may cause harmful interference to radio communications. However, there is no guarantee that interference will not occur in a particular installation. If this equipment does cause harmful interference to radio or television reception, which can be determined by turning the equipment off and on, the user is encouraged to try to correct the interference by one of the following measures:

- Reorient or relocate the receiving antenna.
- Increase the separation between the equipment and receiver.
- Connect the equipment into an outlet on a circuit different from that to which the receiver is connected.
- Consult the dealer or an experienced radio/TV technician for help.

This device complies with Part 15 of the FCC Rules. Operation is subject to the following two conditions: (1) This device may not cause harmful interference, and (2) this device must accept any interference received, including interference that may cause undesired operation.

FCC Caution: Any changes or modifications not expressly approved by the party responsible for compliance could void the user's authority to operate this equipment.

### IMPORTANT NOTE: FCC Radiation Exposure Statement:

This equipment complies with FCC radiation exposure limits set forth for an uncontrolled environment.

This transmitter must not be co-located or operating in conjunction with any other antenna or transmitter.

9

## Declaration of Conformity (DoC)

We, **In-Tech Electronics Ltd**  
Unit 7-10, 2/F Century Centre, 44-46 Hung To Road,  
Kwun Tong, Kowloon, Hong Kong.

declare that the following product(s):

Product Description: Bluetooth Car Kit Cigarette Type  
Model Number: BT70K


is/are conformed to comply with the protection requirements of the Directive(s):

EC Low Voltage Directive	73/23/EEC
EC EMC Directive	89/336/EEC
EC EMC Directive Amendment	92/31/EEC & 93/68/EEC
e-mark Directive Amendment	95/54/EEC

Test Standards:  
EN 301 489-1 v.1.2.1: 2000, EN 301 489-17 v.1.2.1: 2000  
EN 300 328-1 v.1.4.1: 2001, EN 300 328-2 v.1.4.1: 2001  
EN 60950: 2000  
FCC Part 15C & 15B  
AN/NZA4771  
ECE R-10

I understand that the manufacturer would take all the responsibilities for the above product(s).

For and on behalf of

  
\_\_\_\_\_  
Authorized person

Name: Peter Ho

Position: R&D Manager

Date of issue: August 10<sup>th</sup>, 2005

\* I hereby declare that I am entitled to sign on behalf of the applicant and that the information supplied is correct and complete.

10



Hong Kong  
Location