

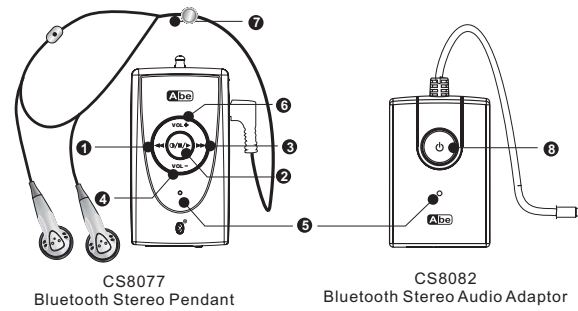


CS8077 Bluetooth Stereo Pendant and CS8082 Bluetooth Audio Adaptor User Manual



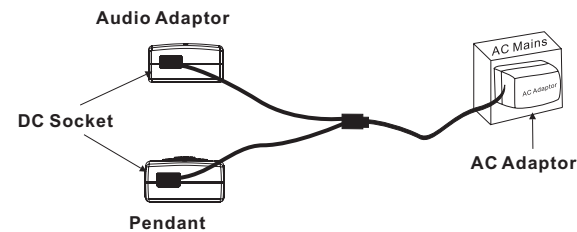
Environmental friendly

<http://www.abe-hk.com>



- | | | |
|------------------------|-----------------|--------------------------|
| 1. ◀ | 2. ⏻/▶ | 3. ▶ |
| • Backward | • Power On/ Off | • Forward |
| • Reject the call | • Play | • Call transfer |
| • Voice dialing | • Stop | • Redial the last number |
| | • Pairing | |
| 4. VOL - | 5. ● | 6. VOL + |
| • Volume down | • LED | • Volume up |
| 7. ● | 8. ⏸ | |
| • Removeable headphone | • PLAY/STOP | |

1. Charging and recharging the battery
Thank you for buying the new CS8077 Bluetooth Stereo Pendant and the new CS8082 Bluetooth Stereo Audio Adaptor pack. Before first time use, it is important to charge the battery of each of them for 6 hours. Connect the A/C power adaptor cable and the Y-cable together. And then, connect the two ends of the Y-cable to the Pendant's and the Audio Adaptor's DC socket. During recharging, the LED shows a steady red light. When the battery is fully charged, the Red LED is off.



1

Scenario	Pendant paired with mobile phone (not supplied)	Audio Adaptor (supplied)	USB Bluetooth Dongle (not supplied)	Bluetooth enabled PDA with AV profile (not supplied)
I Mobile phone calls only.	Yes			
II Music only from the audio source (MP3, iPod, etc.) that the Audio Adaptor is connected to.		Yes		
III Music only from the audio source (Notebook/PC, desktop PC, etc.) that the Bluetooth USB dongle is connected to.			Yes	
IV Music only from the PDA.				Yes
V Mobile phone calls and audio source (MP3, iPod, etc.) that the Audio Adaptor is connected to.	Yes	Yes		
VI Mobile phone calls and music from the audio source (Notebook/Desktop PC, etc.) that the BT-USB dongle is connected to.	Yes		Yes	
VII Mobile phone calls and music from the PDA.	Yes			Yes

There are seven (7) user scenarios for you to enjoy the Bluetooth wireless convenience:

Seven possible User Scenarios:

- If the pairing is successful, the LED will flash green, which indicates it is in Standby Mode and ready to answer and receive mobile phone calls from it. If pairing does not occur as expected, turn the Pendant and the mobile phone off. Wait for 10 seconds and repeat the pairing process from the beginning.
- Answering incoming calls / Rejecting incoming calls
 - When an incoming call is present, ring tones of speaker will be heard from the earpiece of the Pendant. Press **▶** button will answer the call. Press **◀** button will reject the call.
 - [Advance function]** If the Pendant is connected with your mobile phone and another Bluetooth transmitter such as the Audio Adaptor simultaneously and you are listening to the music using the earpiece, a ring tone will prompt you. Press **▶** button will answer the call. Press **◀** button will reject the call and you will continue listening to the music.
- Ending calls
 - While a call is in session, press **▶** button will end the call.
 - [Advance function]** If the Pendant is connected with your mobile phone and another Bluetooth transmitter such as the Audio Adaptor simultaneously, press **▶** button will end the call and you will continue listening to the music.
- Last number redial
 - While the Pendant and Bluetooth mobile are in Standby Mode, press and hold the **▶** button for 2 seconds to redial the last dialed number.
 - [Advance function]** If the Pendant is connected with your mobile phone and another Bluetooth transmitter such as the Audio Adaptor, press and hold the **▶** button for 2 seconds to redial the last dialed number. Press **▶** button to end the call as normal.
- Adjusting speaker volume
 - While a call is in session, pressing and releasing VOL + / VOL - buttons will adjust the speaker volume.
 - [Advance function]** While the Pendant is playing music, pressing / releasing VOL+ / VOL - buttons will adjust the speaker volume.
- Activating voice dialing

When the Pendant is in standby mode, press and hold the button **◀** for 2 seconds until a long beep is heard. The Pendant is connecting to your mobile phone for voice dialing function. If the connection is successfully made, the phone will ask for the name of the person you wish to call. The call will be executed in a few seconds. If the connection is failed, the Pendant will beep and go back to standby mode. Before the Pendant entering into voice dialing mode, make sure the voice dialing function of the phone is enabled.

(ADVANCE FUNCTION) While the Pendant is playing the music, continuously pressing the button **◀** will stop the music playing and a long beep will be heard, indicating that the Pendant is connecting with mobile phone for voice dialing function. If the connection is successfully made, the voice dialing can be executed according to the mobile phone's menu operations. If the connection is failed, the Pendant will beep and go back to music playing.

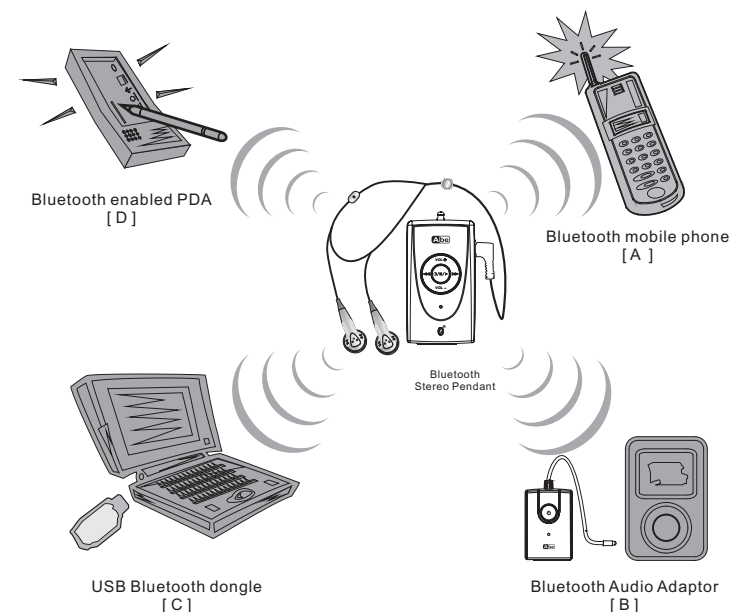
Remarks: Voice dialing function is not supported in Sony Ericsson K750i

5

Index

1. Charging and recharging the battery	1
2. Low-battery indication	2
3. Turning on / Turning off the Pendant and the Audio Adaptor	2
Seven possible User Scenarios	3
I. Stereo Pendant paired with Bluetooth mobile phone Guide [A]	4
1. Pairing	4
2. Answering incoming calls / Rejecting incoming calls	5
3. Ending calls	5
4. Last number redial	5
5. Adjusting speaker volume	5
6. Activating voice dialing	5
7. Transfer call	6
II. Stereo Pendant paired with Stereo Audio Adaptor Guide [B]	6
1. Pairing	6
2. Listening to music	6
III. Stereo Pendant paired with USB Bluetooth Dongle Guide [C]	7
1. Pairing	7
2. Listening to music	7
IV. Stereo Pendant paired with Bluetooth enabled PDA Guide [D]	8
1. Pairing	8
2. Listening to music	8
V. Stereo Pendant paired with Audio Adaptor and Bluetooth mobile phone Guide [A & B]	9
1. Pairing	9
2. Listening to music	9
3. Monitoring mobile phone calls	9
VI. Stereo Pendant paired with USB Bluetooth dongle and Bluetooth mobile phone Guide [A & C]	10
1. Pairing	10
2. Listening to music	10
3. Monitoring mobile phone calls	10
VII. Stereo Pendant paired with Bluetooth enabled PDA and Bluetooth mobile phone Guide [A & D]	11
1. Pairing	11
2. Listening to music	11
3. Monitoring mobile phone calls	11
VIII. Stereo Pendant Connected to Home HiFi and Car Audio System	12
Accessories Table	11
FCC Interference Statement	13
Declaration of Conformity	14

2

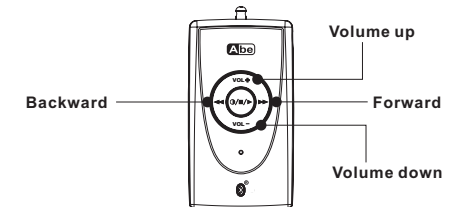


I. [A] Stereo Pendant paired with Bluetooth mobile phone Guide

- Pairing
 - While the Pendant is powered off, press and hold **▶** button for 4 seconds. The LED will flash red and green alternatively, which indicates the Pendant in Pairing Mode. The Pairing Mode will last for one minute.
 - Follow the operating instructions of your Bluetooth mobile phone to start the pairing process. Typically, this has to be done by going to a setup or connect menu and then selecting the options to discover Bluetooth devices. It may take several seconds to establish a Bluetooth connection. Your phone's display should indicate that it has found the model name "CS8077"; and prompt you for a passkey or PIN. Enter a sequence of "0000".

4

- Transfer call
 - To transfer a call from the Pendant to your mobile phone
 - If the mobile phone is enabled with the Hands-free profile, press the **▶** button while the call is in session and it will be transferred to your mobile phone.
 - If the mobile phone is enabled with the Headset profile, follow the instructions of your mobile phone manual to do call transfers.
 - To transfer a call from your mobile phone to the Pendant
 - Follow the instructions of the mobile phone manual to do call transfers



II. [B] Stereo Pendant paired with Stereo Audio Adaptor Guide

- Pairing
 - While the Pendant is powered off, press and hold **▶** button for 4 seconds. The LED will flash red and green alternatively, which indicates the Pendant in Pairing Mode. The Pairing Mode will last for one minute.
 - While the Stereo Audio Adaptor is powered off, press and hold PLAY/STOP buttons for 2 seconds. The LED will flash red and green alternatively, which indicates the Audio Adaptor is in Pairing Mode. The Pairing Mode will last for one minute.
 - Put the Pendant and the Audio Adaptor close to each other, 0.5 to 3 meters. After a few seconds, their LED's will turn into flashing green, which indicates successful pairing. Both units are in Standby Mode and ready to transmit audio signal, or music from the audio source.
- Listening to music
 - After successful pairing, plug the jack of the Audio Adaptor to the 3.5 mm socket of any audio source such as iPod, MP3, CD player, Notebook PC, or others.
 - Put the earpiece on.
 - Play the music on the audio source as normal; you will listen to the stereo music from the earpiece.

6

- d. The speaker volume of the earpiece can be adjusted by pressing and releasing the VOL+ /VOL- buttons.
- e. Turn the Pendant off after use. The Audio Adaptor will be turned off automatically. Next time, you don't need to pair them again. Turn them on, and then they will be paired automatically and ready to transmit music from the audio source.

III. [C] Stereo Pendant paired with USB Bluetooth Dongle Guide

1. Pairing
 - a. While the Pendant is powered off, press and hold **○/■/▶** for 4 seconds. The LED will flash red and green alternatively, which indicates the Pendant in Pairing Mode. The Pairing Mode will last for one minute.
 - b. Put the Pendant, the USB Bluetooth dongle and the PC close to each other, 0.5 to 3 meters.
 - c. Insert the USB Bluetooth Dongle into a USB port of your Notebook PC / desktop PC to start the pairing process. Typically, this has to be done by executing a Bluetooth application program supporting the Audio Visual (A/V) Profile, to discover the Pendant. It may take some time to search it depending on the number of Bluetooth devices nearby.
 - d. Your PC will display the model name "CS8077" if it has found the Pendant; and ask for a passkey. Enter a sequence of "0000". After successful pairing, follow the instructions to establish the Bluetooth connection with the Pendant.
 - e. If the pairing is successful, the LED will flash green, which indicates it is in Standby Mode and ready to receive audio signals from the dongle. If pairing does not occur as expected, turn the Pendant and the PC off. Wait for 10 seconds and repeat the pairing process from the beginning.
2. Listening to music
 - a. Put the earpiece on.
 - b. Start a music application such as Windows Media Play or RealOne Player and play the music; you will listen to the stereo music from the earpiece.
 - c. The speaker volume of the earpiece can be adjusted by pressing the VOL+ /VOL- buttons.
 - d. While listening to music (for example, song 2), press the Pendant's FORWARD **▶▶** button will skip to next song (for example, song 3); press the BACKWARD **◀◀** button will replay the current song (for example, song 2). Double press the BACKWARD button will play the last song (for example, song 1). This remote control function is supported only by the AVRCP profile of your Bluetooth application program.
 - e. Turn the Pendant off after use.

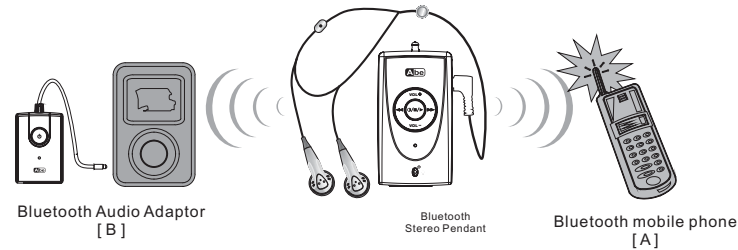
IV. [D] Stereo Pendant paired with Bluetooth enabled PDA Guide

1. Pairing
 - a. While the Pendant is powered off, press and hold **○/■/▶** button for 4 seconds. The LED will flash red and green alternatively, which indicates the Pendant in Pairing Mode. The Pairing Mode will last for one minute.
 - b. Put the Pendant and the Bluetooth enabled PDA (with A/V profile) close to each other, 0.5 to 3 meters.
 - c. Follow the operation instructions of your Bluetooth enabled PDA (with A/V profile) to start the pairing process. Typically, this has to be done by going to a setup or connect menu to discover the Pendant. It may take some time to search it depending on the number of Bluetooth devices nearby.
 - d. Your PDA will display the model name "CS8077" if it has found the Pendant; and ask for a passkey. Enter a sequence of "0000". After successful pairing, follow the instructions to establish the Bluetooth connection with the Pendant.
 - e. If the pairing is successful, the LED will flash green, which indicates it is in Standby Mode and ready to receive audio signals from the PDA. If pairing does not occur as expected, turn the Pendant and the PDA off. Wait for 10 seconds and repeat the pairing process from the beginning.
2. Listening to music
 - a. Put the earpiece on.
 - b. Play the music on the PDA as normal; you will listen to the stereo music from the earpiece.
 - c. The speaker volume of the earpiece can be adjusted by pressing the VOL+ /VOL- buttons.
 - d. While listening to music (for example, song 2), press the Pendant's FORWARD **>>** button will skip to next song (for example, song 3); press the BACKWARD **<<** button will replay the current song (for example, song 2). Double press the BACKWARD button will play the last song (for example, song 1). This remote control function is supported only by the AVRCP profile of your Bluetooth application program.
 - e. Turn the Pendant off after use.

Advance functions: The following user scenarios provide you a true wireless freedom to monitor the mobile phone call status while you are enjoying stereo music at the same time. You don't even need to put down your earpiece.

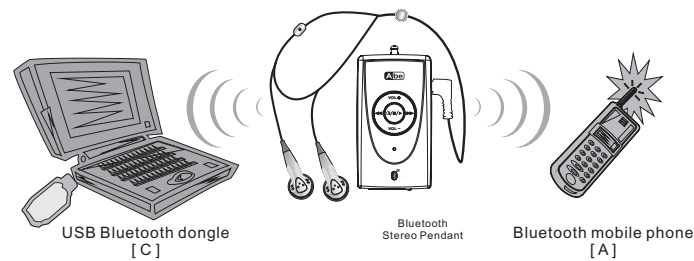
* Advance functions are not supported in Sony Ericsson T610, T630

V. [A & B] Stereo Pendant paired with Audio Adaptor and Bluetooth mobile phone Guide



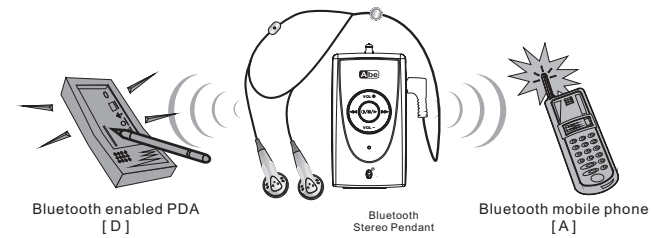
1. Pairing
 - a. Follow the Pairing process [B] to pair the Pendant and the Audio Adaptor.
 - b. After successful pairing, turn the Pendant off. The Audio Adaptor will turn off automatically.
 - c. Follow the pairing process [A] to pair the Pendant and the Bluetooth mobile phone.
 - d. After successful pairing, turn on the Audio Adaptor.
 - e. All three devices are in Standby Mode and the LED's should flash green.
2. Listening to music
 - a. Follow the Listen to music process [B] to enjoy the music.
3. Monitoring mobile phone calls
 - a. Follow the **[Advance function]** in [A] to monitor phone calls.

VI. [A & C] Stereo Pendant paired with USB Bluetooth dongle and Bluetooth mobile phone Guide



1. Pairing
 - a. Follow the Pairing process [C] to pair the Pendant and the USB Bluetooth dongle.
 - b. After successful pairing, turn the Pendant off.
 - c. Follow the pairing process [A] to pair the Pendant and the Bluetooth mobile phone.
 - d. After successful pairing, please follow the PC Bluetooth application program instructions to re-establish the Bluetooth connection between the Bluetooth dongle and the Pendant.
 - e. All three devices are in Standby Mode and the LED's should flash green.
2. Listening to music
 - a. Follow the Listen to music process [C] to enjoy the music.
3. Monitoring mobile phone calls
 - a. Follow the **[Advance function]** in [A] to monitor phone calls

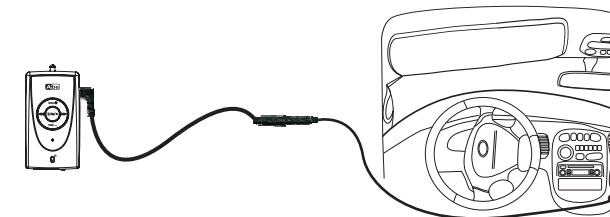
VII. [A & D] Stereo Pendant paired with Bluetooth enabled PDA and Bluetooth mobile phone Guide



1. Pairing
 - a. Follow the Pairing process [D] to pair the Pendant and the Bluetooth enabled PDA.
 - b. After successful pairing, turn the Pendant off.
 - c. Follow the pairing process [A] to pair the Pendant and the Bluetooth mobile phone.
 - d. After successful pairing, please follow the PDA Bluetooth application program instructions to re-establish Bluetooth connection between the PDA and the Pendant.
 - e. All three devices are in Standby Mode and the LED's should flash green.
2. Listening to music
 - a. Follow the Listen to music process [D] to enjoy the music.
3. Monitoring mobile phone calls
 - a. Follow the **[Advance function]** in [A] to monitor phone calls.

VIII. Stereo Pendant Connected to Home HiFi and Car Audio System

1. Pairing
 - a. Follow the pairing process (A) to pair the Pendant and the Bluetooth Mobile phone (with AV profile); or follow the pairing process (B) to pair the Pendant and the Audio Adaptor; or Follow the process (D) to pair the Pendant and the Bluetooth enabled PDA;
2. Listening to music
 - a. After successful pairing, connect the Pendant and home HiFi or car audio system via line-in or RCA connection (cable not provided)



- (a) Line-in connection:
- (b) RCA connection:
- b. Follow the operation of instructions of your audio sources to play the music;
- C. Turn off the Pendant after use.

Federal Communication Commission Interference Statement

This equipment has been tested and found to comply with the limits for a Class B digital device, pursuant to Part 15 of the FCC Rules. These limits are designed to provide reasonable protection against harmful interference in a residential installation. This equipment generates, uses and can radiate radio frequency energy and, if not installed and used in accordance with the instructions, may cause harmful interference to radio communications. However, there is no guarantee that interference will not occur in a particular installation. If this equipment does cause harmful interference to radio or television reception, which can be determined by turning the equipment off and on, the user is encouraged to try to correct the interference by one of the following measures:

- Reorient or relocate the receiving antenna.
- Increase the separation between the equipment and receiver.
- Connect the equipment into an outlet on a circuit different from that to which the receiver is connected.
- Consult the dealer or an experienced radio/TV technician for help.

This device complies with Part 15 of the FCC Rules. Operation is subject to the following two conditions: (1) This device may not cause harmful interference, and (2) this device must accept any interference received, including interference that may cause undesired operation.

FCC Caution: Any changes or modifications not expressly approved by the party responsible for compliance could void the user's authority to operate this equipment.

IMPORTANT NOTE:

FCC Radiation Exposure Statement:

This equipment complies with FCC radiation exposure limits set forth for an uncontrolled environment. End users must follow the specific operating instructions for satisfying RF exposure compliance. This transmitter must not be co-located or operating in conjunction with any other antenna or transmitter.

Accessories Table	Description	Status
	A/C Adaptor	Provided
	USB Charging cable	Optional
	2.5mm to 3.5 mm Audio Cable	Provided