



**LD 77A**  
**LCD Display for Cigarette Plug**  
**and Visor type Car Kit For**  
**CS8118Y2R (BT70RD)**

**User Manual**

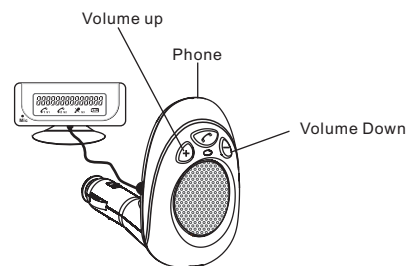


**Table of Contents**

1. BT70RD profile and its functions.....3  
 1.1. Profile.....3  
 2. How to mount the BT70RD in the car .....5  
 3. LCD Display status .....5  
 3.1. On / Off and Pairing.....5  
 3.2. Calling in.....7  
 3.3. Calling out.....8  
 3.4 On Line.....9  
 4. Federal Communication Commission Interference Statement...11.12

**LCD Display for Cigarette Plug and Visor types of Car Kits**

Thank you for using LD 77A LCD Display unit. This LCD Display unit is designed to be an optional accessory to BT 77AD Visor type car kit and a standard feature of BT 70PD and BT70RD Cigarette Plug type car kits. It provides useful information of the car kits including Caller ID of incoming calls and other operational status.



CS8118Y2R

Note: LD 77A is a standard feature for BT 70RD.

**1. BT70RD profile and its functions**

1.1. Profile(Fig.1)

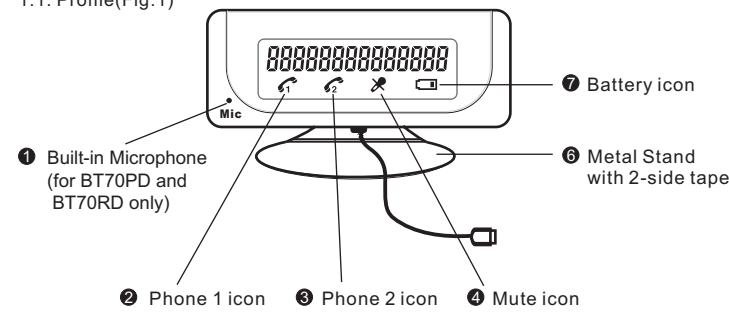


Fig. 1

The backlight will be on automatically for 10 seconds when there is an incoming call or when any key operations are performed directly from the car kit. Note that the backlight will not be turned on when key operations are performed from the mobile phones.

**2. How to mount the BT70RD in the car**

- Use the Alcohol Pad to clean the surface of a desired position on the top of the dashboard.
- Use the 2-side tape to attach the metal stand on the cleaned area.
- Put the BT70RD into an appropriate position(Refer to Fig.4)
- Slide the LCD to the metal stand.

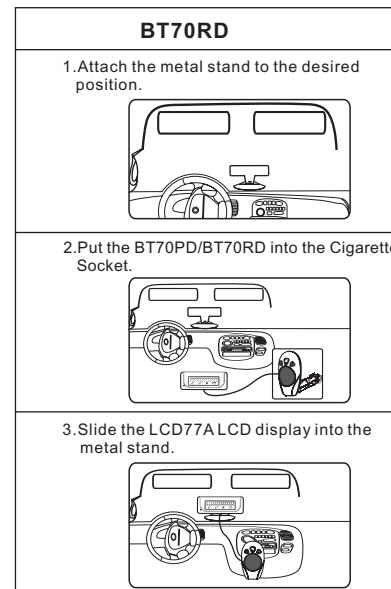


Fig. 4

**3. LCD Display status**

When the LCD Display unit is properly connected to a Car Kit, it will provide you with the status of the Car Kit's operations. For detailed operations, please refer to the appropriate Car Kit user manuals.

3.1. On / Off and Pairing

After the car kit has been powered on, it will stay on idle. Before it is connected to the mobile phone, the LCD screen displays "READY".	
When the Car Kit is in pairing mode, the LCD screen displays "PAIRING"	

While the car kit is connecting to the mobile phone, the LCD screen displays "CONNECTING".	
After the car kit has connected to the mobile phone successfully, the LCD screen displays "CONNECTED".	
If you press the ON / OFF key for about 5 seconds to turn off the car kit, the LCD screen displays "OFF" for a few seconds before it is completely off.	




3.2. Calling in

When there is an incoming call, the LCD screen displays "RINGING", or its caller ID, if it is received.	
Note: Some mobile phones may not display Caller ID via this LCD Display unit.	Or Caller ID 
When the call is answered, the LCD screen displays "ON LINE".	
If the call is rejected, it will go back to idle state and the LCD screen displays "CONNECTED".	

3.3. Calling out

When there is an outgoing call from the mobile phone, the LCD screen displays "CALLING".	
When the call is made successfully, the LCD screen displays "ON LINE".	

3.4 On Line




When you are talking on line, the LCD screen displays "ON LINE".	
Whenever the Volume Up key or Volume Down key is pressed, the LCD screen displays "VOL" and the current volume setting for 2 seconds.	
If you mute the microphone, the mute icon will be turned on. And it stays on until you cancel it.	

9

**IMPORTANT NOTE:  
FCC Radiation Exposure Statement:**

This equipment complies with FCC radiation exposure limits set forth for an uncontrolled environment. This equipment should be installed and operated with minimum distance 20cm between the radiator & your body. This transmitter must not be co-located or operating in conjunction with any other antenna or transmitter.

12

When there is another call incoming while you are on line, the LCD screen will show "CALL WAITING" or its Caller ID, if it is received.  Note: Some mobile phones may not display "CALL WAITING" or Caller ID via this LCD Display unit.	 Or Caller ID 
When the call is ended, it will go back to the idle state. The LCD screen displays "CONNECTED".	

10

**Federal Communication Commission Interference Statement**

This equipment has been tested and found to comply with the limits for a Class B digital device, pursuant to Part 15 of the FCC Rules. These limits are designed to provide reasonable protection against harmful interference in a residential installation. This equipment generates, uses and can radiate radio frequency energy and, if not installed and used in accordance with the instructions, may cause harmful interference to radio communications. However, there is no guarantee that interference will not occur in a particular installation. If this equipment does cause harmful interference to radio or television reception, which can be determined by turning the equipment off and on, the user is encouraged to try to correct the interference by one of the following measures:

- Reorient or relocate the receiving antenna.
- Increase the separation between the equipment and receiver.
- Connect the equipment into an outlet on a circuit different from that to which the receiver is connected.
- Consult the dealer or an experienced radio/TV technician for help.

This device complies with Part 15 of the FCC Rules. Operation is subject to the following two conditions: (1) This device may not cause harmful interference, and (2) this device must accept any interference received, including interference that may cause undesired operation.

FCC Caution: Any changes or modifications not expressly approved by the party responsible for compliance could void the user's authority to operate this equipment.

11