



Bluetooth® Hands-free Car Kit CS8110 (BT 70P)

User Manual

I-2 Function (please refer to Fig.1)

- 1 Volume Down**
 - ⊙ Redial the last dialed number
 - ⊙ Decrease the speaker volume
 - ⊙ Answer call waiting
- 2 LED**
 - ⊙ There are two LED colors (blue and red) to indicate the state of this Car Kit.
- 3 On / Off**

If you press "On / Off", you can:

 - ⊙ Switch on and Off
 - ⊙ Pair
 - ⊙ Answer a new call
 - ⊙ Reject a call
 - ⊙ Make a new call using voice dialing
- 4 External Microphone**
 - ⊙ It allows you and your friend at the far end to speak with quality voice.
- 5 Microphone plug**
- 6 External Microphone Socket**
 - ⊙ This socket is for connecting the external microphone.
- 7 Volume Up**
 - ⊙ Increase the speaker volume
 - ⊙ Mute / un-mute the microphone
- 8 Speaker**
- 9 12V Power Connector**
 - ⊙ Connect the Car Kit with the cigarette lighter and power the Car Kit.

Table of Content

I. Profile and Its Function.....	1
I-1 Profile.....	1
I-2 Function.....	2
II. How to Use!	3
II-1 Installation of the Hands-Free Car Kit	3
II-2 Turn on the Hands-free Car Kit.....	4
II-3 Pair the Hands-free Car Kit with Your Bluetooth Mobile Phone.....	4
II-4 Establish Bluetooth Link.....	5
II-5 External Microphone	5
II-6 Answer an Incoming Call.....	6
II-7 Transfer Calls between This Hands-free CarKit and Your Bluetooth Phone..	6
II-8 Make a New Call by Using Voice Dialing.....	6
II-9 Answer the call waiting.....	7
II-10 Mute the Microphone	7
II-11 End a Call.....	7
II-12 Reject a Call	7
II-13 Redial Last Dialed Number.....	7
II-14 Adjust the Speaker Volume.....	8
II-15 Turn off the Hands-free Car Kit.....	8
II-16 Auto connection to the Bluetooth Mobile Phone	8
III. Maintenance and Safe Use.....	8
IV. Accessory.....	8
FCC Interference Statement.....	9

II. How to Use

II-1 Installation of the Hands-free Car Kit

(please refer to Fig.2 and Fig.3)

Thank you for buying the BT 70P, Bluetooth Hands-free Car Kit. Whenever you use the Hands-free Car Kit, please plug the Car Kit into the cigarette lighter socket in your car to get the power.

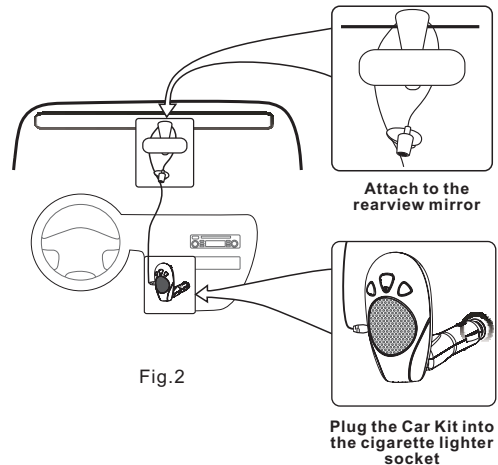


Fig.2

I. Profile and Its Function

I-1 Profile (Fig.1)

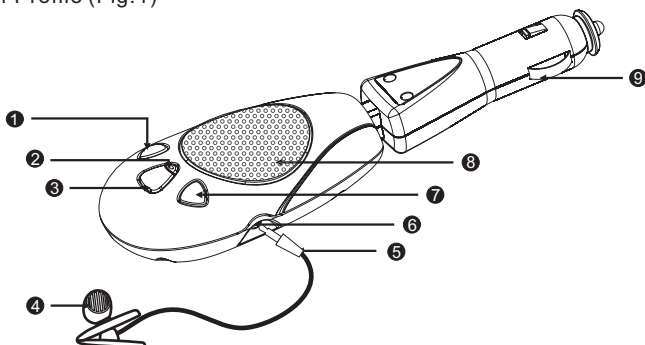


Fig. 1

- | | |
|------------------------|-------------------------------|
| 1. Volume Down | 6. External Microphone Socket |
| 2. LED | 7. Volume Up |
| 3. On/Off | 8. Speaker |
| 4. External Microphone | 9. 12V Power Connector |
| 5. Microphone plug | |

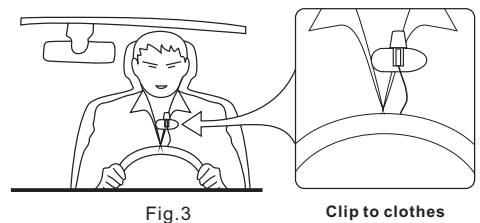


Fig.3

II-2 Turn on the Hands-free Car Kit

When the electrical system of your car is turned on and the Car Charger is plugged into the cigarette lighter socket in your car, the Car Kit will turn on automatically. A long tone will indicate that the hands-free Car Kit has turned on. At the same time, blue LED will flash for a second. And then, blue LED will keep on flashing every 3 seconds.

Note: The Car Kit can also be turned on manually by pressing and holding the "On/Off" key for 2 seconds when it is off.

II-3 Pair the Hands-free Car Kit with Your Bluetooth Mobile Phone

1 Put the hands-free Car Kit in pairing mode

After the Car Kit has powered on and turned on automatically, it will try to auto reconnect the last connected mobile phone. If it fails or connects for the first time, it will enter pairing mode immediately. A double tone will be heard. Then the red and blue LEDs will flash alternatively, which indicates the hands-free Car Kit has entered into the pairing mode.

Note: The Car Kit can also be put in pairing mode manually by pressing and holding the "On/Off" key for 5 seconds when it is off.

2 Put your *Bluetooth* mobile phone in pairing mode

2.1 Follow the operation manual of your *Bluetooth* mobile phone to start the pairing process. Typically, this has to be done by going to a setup or connect menu and then selecting the options to discover *Bluetooth* devices. *Bluetooth* may take several seconds to establish a connection.

2.2 Your phone's display will indicate that it has found the new device "BT 70P". When you want to pair it, the phone's display would demand a passkey or PIN, then you can enter a sequence of "0000".

3 Pair the hands-free Car Kit with your *Bluetooth* Mobile Phone

The blue LED of hands-free Car Kit will flash every 3 seconds indicating successful pairing. The phone may also ask whether you want to change the Car Kit's name. We recommend you should approve the name of "BT 70P" and do not change it.

Note: Make sure if pairing does not occur as expected, turn off the hands-free car kit and your phone, then wait for 10 seconds. Turn on them again and repeat from Step 1 to Step 3.

II-4 Establish *Bluetooth* Link

After pairing, the mobile phone should have "connect" menu. Please select it to establish the link. A beep tone will indicate that the Car Kit is connected. Now you are ready to make and answer calls on the hands-free Car Kit.

Note: For other phones, please follow their operation manuals to establish the link!

II-5 External Microphone (please refer to Fig.2)

Insert the microphone plug into the external microphone socket as shown in Fig. 2.

5

II-6 Answer an Incoming Call

When an incoming call is present, the hands-free Car Kit will ring. Press "On / Off" and you can answer the call. The blue LED will continue to flash once a second while the call is in session.

II-7 Transfer Calls between This Hands-free Car Kit and Your *Bluetooth* Phone

When you are in session, calls can be transferred from your *Bluetooth* Phone to the hands-free Car Kit and vice versa.

- 1 From *Bluetooth* Phone to the Car Kit
Press "On / Off" once, the call will be transferred to the Car Kit.
- 2 From Car Kit to the *Bluetooth* Phone
Please follow the operation manual of your phone.

II-8 Make a New Call by Using Voice Dialing

1 When using a *Bluetooth* Mobile Phone:

1.1 Press "On / Off" on the hands-free Car Kit shortly when the Car Kit is standby.

Note: Make sure that the voice dialing function is properly set up in the mobile phone and it is within the range of the hands-free Car Kit.

1.2 Put through the call

After the beep tone on the hands-free Car Kit, you can make a voice dial by saying the name of the person on the hands-free Car Kit. The call will be connected in a few seconds.

2 When using a mobile phone without *Bluetooth* built-in and requiring a *Bluetooth* dongle:

2.1 Press "On / Off" on the hands-free Car Kit shortly when the Car Kit is standby.

Note: Make sure that the voice dialing function is properly set up in the Mobile phone and it is within the range of the hands-free Car Kit.

6

2.2 Put through the call

After the beep tone on the hands-free Car Kit, you can make a voice dial and the call will be connected in a few seconds.

II-9 Answer the call waiting

During the active call in session if another call is coming, pressing "Volume Down" for 2 seconds will make the mobile phone switch to the waiting call and place the active call on hold. Press "Volume Down" for 2 seconds again, mobile phone will come back to the first active call.

II-10 Mute the Microphone

1 To mute a call

Press Volume Up for about 2 seconds and a beep tone will indicate the microphone is muted. A periodic reminder tone will be heard while the mute function is active.

2 To un-mute a call

When the microphone is muted, press Volume Up for about 2 seconds. Then the mute function will end and the periodic reminder tone will stop.

II-11 End a Call

While a call is in session on the hands-free Car Kit, press "On / Off" and you will disconnect the call. A long tone will indicate that the call has ended. After the call is disconnected, the blue LED will flash normally.

II-12 Reject a Call

When the hands-free Car Kit is ringing, press "On/Off" for 2 seconds. Ringing will stop and a long tone will indicate that the call is rejected.

II-13 Redial Last Dialed Number

To redial the last dialed number, press "Volume Down" for 2 seconds when the Car Kit is standby, a beep tone will indicate an attempt to redial.

7

II-14 Adjust the Speaker Volume

While a call is in session, pressing and releasing "Volume Up" will increase the speaker volume, and pressing and releasing "Volume Down" will decrease the speaker volume. A double tone will be heard whenever the volume limit is reached.

II-15 Turn off the Hands-free Car Kit

When the hands-free Car Kit is on, press and hold "On/Off" for 5 seconds. A long tone will indicate that the Car Kit starts to power off. LED continues to flash for a few seconds. At last LED will turn off and the Car Kit is powered off.

II-16 Auto connection to the *Bluetooth* Mobile Phone

The Car Kit has already been paired with a *Bluetooth* mobile phone. If it is turned off and turned back on again, it will search for available *Bluetooth* link. If the previously paired mobile phone's *Bluetooth* feature is on, the Car Kit and the mobile phone will re-establish the *Bluetooth* link automatically.

III. Maintenance and Safe Use

- ⊙ Use dry cloth to clean hands-free car kit!
- ⊙ Do not expose the car kit to liquid or moisture!
- ⊙ Do not expose the car kit to fire or open flames!

IV. Accessory

External Microphone (Provided)

8

Note:

BQB, CE and FCC approved

The *Bluetooth* word mark and logos are owned by the *Bluetooth* SIG, Inc. And any use of such marks by In-Tech Electronics Ltd is under license. Other trademarks and trade names are those of their respective owners.

Bluetooth functions and operations may not be available or may vary depending on different mobile phones.

Federal Communication Commission Interference Statement

This equipment has been tested and found to comply with the limits for a Class B digital device, pursuant to Part 15 of the FCC Rules. These limits are designed to provide reasonable protection against harmful interference in a residential installation. This equipment generates, uses and can radiate radio frequency energy and, if not installed and used in accordance with the instructions, may cause harmful interference to radio communications. However, there is no guarantee that interference will not occur in a particular installation. If this equipment does cause harmful interference to radio or television reception, which can be determined by turning the equipment off and on, the user is encouraged to try to correct the interference by one of the following measures:

- Reorient or relocate the receiving antenna.
- Increase the separation between the equipment and receiver.
- Connect the equipment into an outlet on a circuit different from that to which the receiver is connected.
- Consult the dealer or an experienced radio/TV technician for help.

This device complies with Part 15 of the FCC Rules. Operation is subject to the following two conditions: (1) This device may not cause harmful interference, and (2) this device must accept any interference received, including interference that may cause undesired operation.

FCC Caution: Any changes or modifications not expressly approved by the party responsible for compliance could void the user's authority to operate this equipment.

IMPORTANT NOTE:

FCC Radiation Exposure Statement:

This equipment complies with FCC radiation exposure limits set forth for an uncontrolled environment. This equipment should be installed and operated with minimum distance 20cm between the radiator & your body. This transmitter must not be co-located or operating in conjunction with any other antenna or transmitter.

10