



NV6-CS8136

Bluetooth FM Handsfree Kit CS8136

User Manual



Index

1. Profile.....1

2. How to install the Bluetooth FM Handsfree Kit.....3

3. Battery charging.....5

4. Low-battery indication.....5

5. Power the Bluetooth FM Handsfree Kit.....5

6. Pairing mobile phone with Bluetooth FM Handsfree Kit.....5

6-1. Establish Bluetooth Link.....5

6-2. Answering incoming calls / Rejecting incoming calls.....7

6-3. Ending calls.....8

6-4. Transfer Call (Voice Transfer).....8

6-5. Adjust volume.....8

6-6. Last number redial.....8

6-7. Voice dial.....9

6-8. Microphone mute.....9

6-9. Call waiting.....9

7. Play and pause the music.....9

8. Play next song.....10

9. Play previous song.....10

10. No network signal alert.....10

11. Transfer signal from Bluetooth FM Handsfree Kit to car radio system.....10

12. FM frequency direct tuning.....11

13. FM frequency memory programming.....11

14. Preset channel recalling.....12

15. FM frequency auto scan.....13

16. FM main power auto off.....13

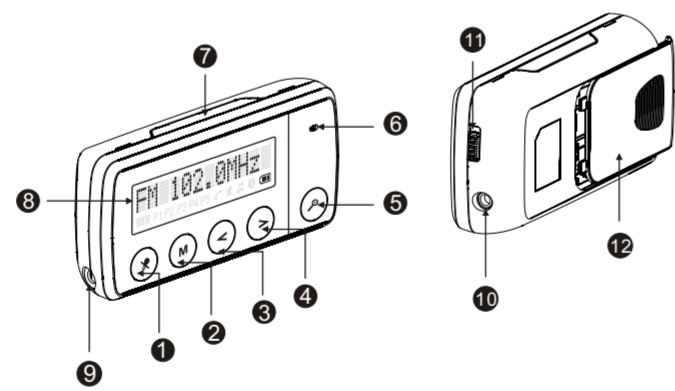
17. Connection between Bluetooth FM Handsfree Kit with music players.....13

18. Accessories.....14

Federal Communication Commission Interference Statement.....15

1. Profile (Fig.1)

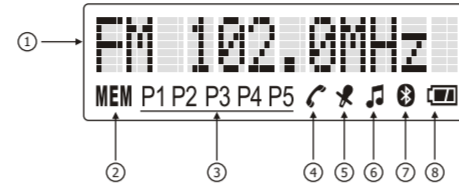
1-1. Profile



- 1. Mic Mute
- 2. Menu/FM memory
- 3. FM Frequency Down / Backward
- 4. FM Frequency Up / Forward
- 5. FM Autoscan
- 6. Mic
- 7. "MFB" button; Answer / End call; Music play / Pause
- 8. LCD display
- 9. Power socket
- 10. Audio input jack
- 11. Power ON / OFF switch
- 12. Battery compartment

1

1-2. Main icons on LCD display

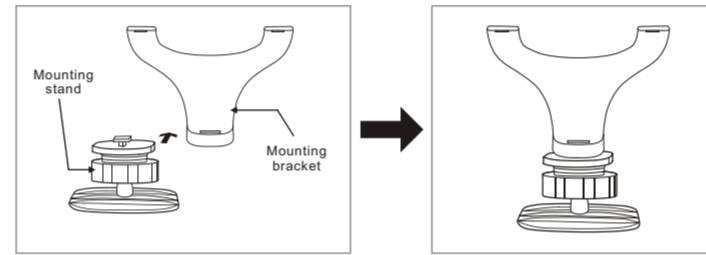


- 1. FM Frequency
- 2. FM Memory
- 3. Preset FM Channel P1-P5
- 4. Conversation
- 5. Mic mute
- 6. Music playing
- 7. Bluetooth
- 8. Battery status

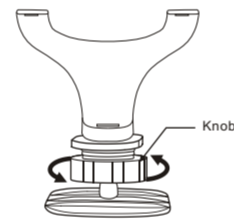
2

2. How to install the Bluetooth FM Handsfree Kit

2-1. Install mounting stand to mounting bracket

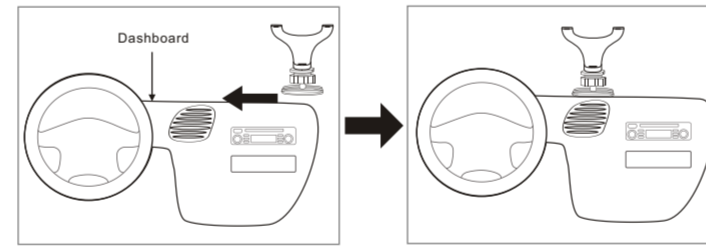


2-2. Slide the knob to lock the Stand and Bracket

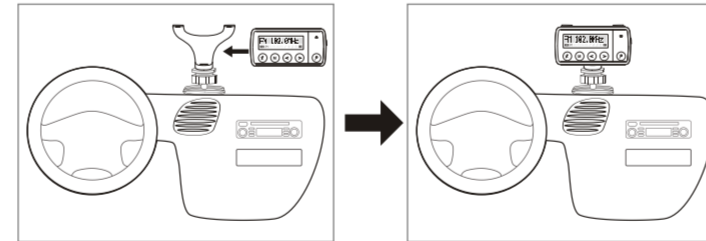


3

2-3. Stick the mounting stand to dashboard



2-4. Fix the Bluetooth FM Handsfree Kit to mounting bracket



You can tilt the mounting stand to any angle that you can view the Bluetooth FM Handsfree Kit most comfortable.

4

3. Battery charging

Before turn on the unit, please make sure the battery is fully charged. You can connect the charging cable of car charger provided to cigarette lighter socket to charge the battery. During charging, the battery icon on LCD will flash. When the battery is fully charged, the battery icon will show full mark.

4. Low-battery indication

When the battery is low, battery icon will show on LCD display. Low battery warning tones are also heard every minute during conversation. When the battery level is too low, the unit will power off automatically.

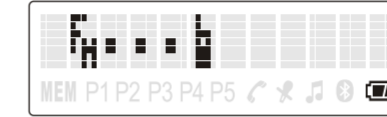
5. Power the Bluetooth FM Handsfree Kit

Slide the power switch to "on" / "off" position to turn on/off the unit.

6. Pairing mobile phone with Bluetooth FM Handsfree Kit

6-1. Establish Bluetooth Link

a. When the Bluetooth FM Handsfree is powered off, press and hold the "Mute" key and then slide the power switch to "on" position. Release the "Mute" key when the LCD shows "Pairing" figure as below.



The pairing mode will last for three minutes.

5

b. Follow the operating instructions of your Mobile phone to start the pairing process. Typically, this has to be done by going to a setup or connect menu and then selecting the options to discover Bluetooth devices. It may take several seconds to establish a connection. Your phone's display should indicate that it has found model "BlueFM" and prompt you for a passkey or pin. Enter a sequence of "0000".

c. If the pairing is successful, the pairing result is indicated on the mobile phone menu. If pairing does not occur as expected, turn the unit and the mobile phone off. Wait for about 10 seconds and repeat the pairing process from the beginning.

d. After pairing, some mobile phones will auto connected with the unit. If not, please following the mobile phone menu to connect the unit after pair. Bluetooth FM Handsfree Kit will display icon on LCD after successful bluetooth connection.

e. Auto re-connection to Bluetooth device
When the unit is off, turning on the unit will automatically reconnect to the last connected device. If the Bluetooth FM Handsfree Kit is on and disconnected with last connected device, press MFB button shortly to reconnect the link again. If abnormal loss of link is happened (e.g. out of reach range), the unit will automatically try to reconnect the mobile phone.

When the Bluetooth FM Handsfree Kit is attempting to make a connection, LCD will be shown:



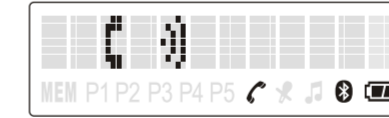
6

6-2. Answering incoming calls / Rejecting incoming calls

When there's incoming call present, a ring tone will be heard. The caller information will be displayed on the LCD.



You can touch the "MFB" button to answer the call and LCD will display



Or long press "Backward" ("<") key about 2 seconds to reject the call.



7

6-3. Ending calls
During conversation, touch "MFB" button will end the call.

6-4. Transfer call (Voice Transfer)
To transfer a call from the unit to mobile phone, please follow the operation instructions of your phone.

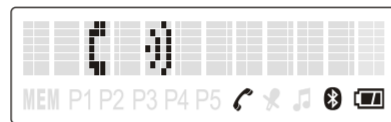
To transfer a call from mobile phone to unit, touch the "MFB" button shortly during conversation.

6-5. Adjust volume
The sound signal transmitted from Bluetooth FM Handsfree Kit is at fixed level, you can adjust the volume at your FM receiver.

6-6. Last number redial
To redial the last number, long press the "forward" (">") button for about 2 seconds. When you are making an outgoing call, LCD will display



After the outgoing call is accepted, LCD will display



8

6-7. Voice dial
Make sure voice dial function is set up in mobile. Press and hold the "Backward" ("<") button for about 2 seconds to activate the voice dialing.

6-8. Microphone mute
During conversation, press the mute key will mute the microphone. Press the mute key again will resume microphone function.

When the microphone is muted, the icon will be shown on the LCD.

6-9. Call waiting
When the unit is in phone conversation and there is another call coming, pressing ">" for 2 seconds will activate mobile phone to switch between these two phone calls.

7. Play and pause the music
Make sure your phone supports A2DP and AVRCP profile. On your phone, choose your song and play. When the music is playing, LCD on the Bluetooth FM Handsfree Kit will display icon. You can touch "MFB" button on the Bluetooth FM Handsfree Kit to pause or play the music.



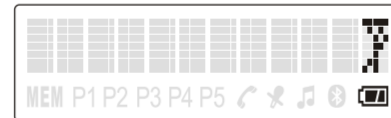
Remark:
If you find the music only play on your phone and cannot transfer to your Bluetooth FM Handsfree Kit, please check below:
a. Check whether your phone have A2DP and AVRCP profile and connect with Bluetooth FM Handsfree Kit.
b. Choose the suitable music player for playing through Bluetooth. (Detail please refer to your phone manual)
c. Some phones have the sound output setting allow you to set the sound output only at mobile phone, please disable it. (Detail please refer to your phone manual)

9

8. Play next song
When the music is playing, press and release "forward" (">") button will play next song.

9. Play previous song
When the music is playing, single press and release the "backward" ("<") button will replay song from the beginning. Double press the "backward" ("<") button will play previous song.
Not every mobile phone will replay current song from the beginning by single press of "Backward" button. Some mobile phones or Bluetooth devices, single press will go to previous song.

10. No network signal alert
If the mobile phone cannot locate the network signal (e.g. out of the reach), alert tones will be heard every 5 seconds from the Bluetooth FM Handsfree Kit. LCD will display "No Network Signal" icon.



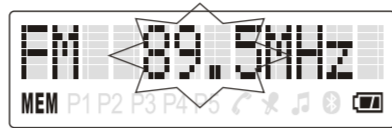
Not every mobile phone supports no network signal alert feature.

11. Transfer signal from Bluetooth FM Handsfree Kit to car radio system
"Please set the Hands-free Kit to a desired free FM frequency channel and tune your car radio to this frequency manually or using the auto search function in your car radio."



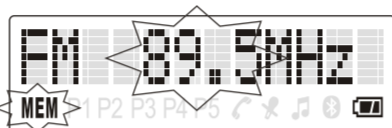
10

12. FM frequency direct tuning
12-1. When Bluetooth FM Handsfree Kit is turned on, press "M" button once will activate direct tuning mode. Frequency value on LCD will flash with "MEM" icon solid on.



12-2. Press the ">"/"<" button to increase or decrease the frequency.
12-3. To exit direct tuning mode, press "Auto scan" key or wait for timeout without further frequency increment / decrement.

13. FM frequency memory programming
13-1. Long press "M" button will activate FM memory programming mode.



The current frequency and the icon "MEM" will be displayed and flashing.

13-2. Press "<"/">" button to increase/decrease frequency

13-3. Press "M" button, "Pn" location will display and flash.

11



13-4. Press "M" button to switch between memory locations.



13-5. Long press "M" button to store the target frequency to select memory location.



14. Preset channel recalling
Press "M" button will show the current frequency used. Subsequent press of "M" button will recall the next memory in order.



12

15. FM frequency auto scan
Press the "Auto scan" button, Bluetooth FM Handsfree Kit will automatically locate a free FM channel for you. Please tune your car radio to this channel manually or by auto search function in your car radio.

16. FM main power auto off
Please note that in order to comply with some countries' radio regulations, the FM transmission may be turned off automatically if there is no audio signal for about 30 seconds.

17. Connection between Bluetooth FM Handsfree Kit with music players
When Bluetooth FM Handsfree Kit is not connected with your mobile phone, you can broadcast your music from other music players through it.

Plug the iPod / MP3 / MP4 to audio input jacket of Bluetooth FM Handsfree Kit. Turn on the music player such as iPod / MP3 / MP4.

13

18. Accessories		
	Accessories	Status
	1 x Car charger	Provided
	3 x AAA Rechargeable battery	Provided
	1 x Mounting bracket	Provided
	1 x Mounting stand	Provided
	1 x Audio wire	Provided

14

FCC User manual:

Federal Communication Commission Interference Statement

This equipment has been tested and found to comply with the limits for a Class B digital device, pursuant to Part 15 of the FCC Rules. These limits are designed to provide reasonable protection against harmful interference in a residential installation. This equipment generates, uses and can radiate radio frequency energy and, if not installed and used in accordance with the instructions, may cause harmful interference to radio communications. However, there is no guarantee that interference will not occur in a particular installation. If this equipment does cause harmful interference to radio or television reception, which can be determined by turning the equipment off and on, the user is encouraged to try to correct the interference by one of the following measures:

- Reorient or relocate the receiving antenna.
- Increase the separation between the equipment and receiver.
- Connect the equipment into an outlet on a circuit different from that to which the receiver is connected.
- Consult the dealer or an experienced radio/TV technician for help.

FCC Caution: Any changes or modifications not expressly approved by the party responsible for compliance could void the user's authority to operate this equipment.

This device complies with Part 15 of the FCC Rules. Operation is subject to the following two conditions: (1) This device may not cause harmful interference, and (2) this device must accept any interference received, including interference that may cause undesired operation.

15

IMPORTANT NOTE:

Radiation Exposure Statement:
This equipment complies with FCC radiation exposure limits set forth for an uncontrolled environment. End users must follow the specific operating instructions for satisfying RF exposure compliance. To maintain compliance with FCC RF exposure compliance requirements, please follow operation instruction as documented in this manual.

This transmitter must not be co-located or operating in conjunction with any other antenna or transmitter.

16