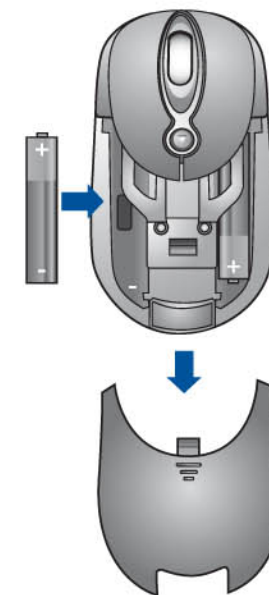
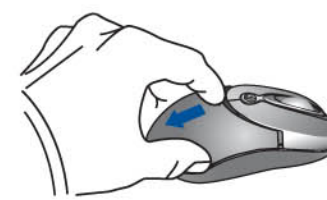
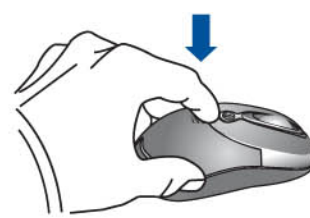


Users Guide

Wireless
Mobile Optical Mouse
800DPI



1



Install the batteries.

2

Turn on mouse. When not in use, turn mouse off to save batteries.



7

- Reorient or relocate the receiving antenna.
 - Increase the separation between the equipment and receiver.
 - Connect the equipment into an outlet on a circuit different from that to which the receiver is connected.
 - Consult the dealer or an experienced radio/TV technician for help.
- Changes or modification made to this equipment not expressly approved by the manufacturer. May void the FCC authorization to operate this equipment.
- Modifications not authorized by the manufacturer may void users authority to operate this device.

Battery Warning Remove batteries when not using your cordless device for long period of time. If the cursor on your screen does not move or moves erratically when you move your mouse. Please change batteries, and exercise care when handling batteries.

3

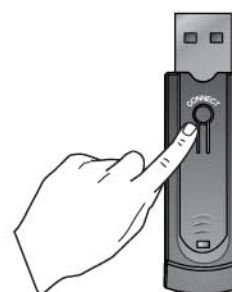


Plug receiver into computer's USB port, and then turn on the computer.



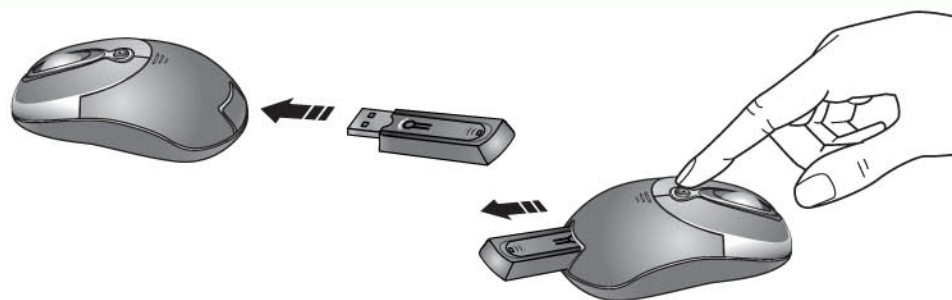
ON

5



Press Connect button on receiver. Then press Connect button on bottom of mouse.

4



Getting the mouse ready for travel: Insert receiver into rear of mouse.

Unpacking the mouse: a) To press the button of mouse, b) the receiver will eject from the mouse, c) Remove receiver

If the mouse LED is blinking blue, replace the batteries. **If the mouse is not working:** 1. Make sure the mouse is on (open). 2. Check batteries and battery installation. 3. Check receiver installation. 4. Try another USB port. 5. Press the CONNECT button on the mouse to reconnect mouse with receiver.

6

Warning:

This device complies with Part 15 of the FCC Rules. Operation is subject to the following two conditions:

- (1) This device may not cause harmful interference, and
- (2) This device must accept any interference received, including interference that may cause undesired operation.

This equipment has been tested and found to comply with the limits for a Class B digital device, pursuant to part 15 of the FCC Rules. These limits are designed to provide reasonable protection against harmful interference in a residential installation. This equipment generates, uses, and can radiate radio frequency energy and, if not installed and used in accordance with the instructions, may cause harmful interference to radio communication. However, there is no guarantee that interference will not occur in a particular installation. If this equipment does cause harmful interference to radio or television reception, which can be determined by turning the equipment off and on, the user is encouraged to try to correct the interference by one or more of the following measures: