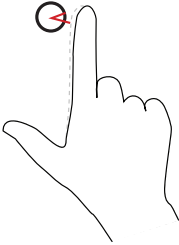
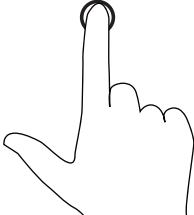


# Gestures

Your computer has a 10-point multi-touch display.

---

| <b>Finger gestures</b>  | <b>Allows you to:</b>  |
|---|--|
| <p data-bbox="157 272 230 296"><b>Touch</b></p> <p data-bbox="157 308 535 363">Tap gently on the screen with your fingertip.</p>       | <ul style="list-style-type: none"><li>• Select items on the screen including options, entries, images, icons, and so on.</li><li>• Start applications.</li><li>• Touch buttons on the screen.</li><li>• Input text using the on-screen keyboard.</li></ul> |
| <p data-bbox="157 646 333 670"><b>Touch and hold</b></p> <p data-bbox="157 681 535 737">Touch and hold your finger on the screen.</p>  | <ul style="list-style-type: none"><li>• Display detailed information about an item</li><li>• Open the context menu of an item to perform further actions.</li></ul>  |

---

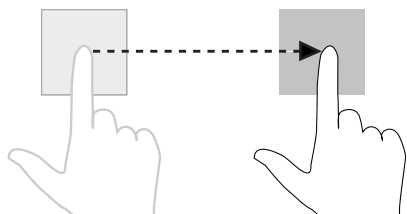
---

## Finger gestures

## Allows you to:

### Drag

- 1 Touch and hold your finger on an item on the screen.
- 2 Keeping your finger in contact with the screen, move your fingertip to the desired location.
- 3 Take your finger off the screen to drop the item at the desired location.



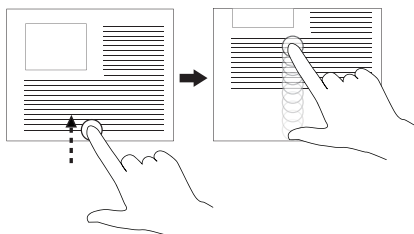
Move items such as images and icons on the screen.

**NOTE:** Touching and holding for a long time brings up the context menu. If the context menu appears, cancel the action and try again or touch and hold for a shorter duration to be able to drag.

---

### Swipe or slide

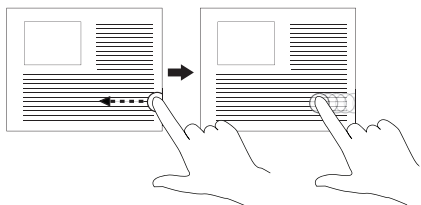
Move your finger in a vertical or horizontal direction on the screen.





- Scroll through the Start screen, web pages, lists, entries, photos, contacts, and so on.
- Close an app. (Swipe the app to the bottom of the display.)

---

### Swipe left



Swiping-in from the right edge of the display reveals the Charms sidebar. Charms provide access to the system commands, such as Search, Share, Start, Devices, and Settings options.

If your computer is running an application or performing actions, pressing the **Start** icon  takes you back to the Start screen. If you are at the Start screen, pressing the **Start** icon  takes you to the most recently used application or most recently viewed screen.

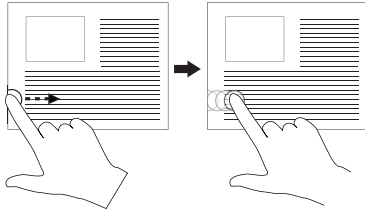
---

## Finger gestures

## Allows you to:

---

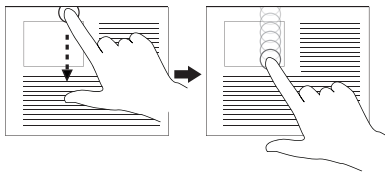
### Swipe right



- Swiping-in quickly from the left edge of the display switches the currently running applications.
- Swiping slowly from the left edge to the right edge of the display reveals thumbnails of open applications.
- Swiping-in and out on the left edge of the display brings up a list of the most recently used applications.

---

### Swipe up/down



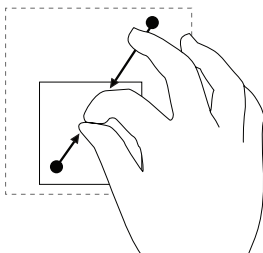
- Swiping-in from the bottom or top edge of the display reveals the **All apps** icon (⋮). Touch **All apps** to show an alphabetical list of all applications installed on your computer.
- Swiping-in from the top edge of the application and dragging the application window to the bottom of the screen closes the application.

---

### Zoom out

Touch the display with two fingers and then move the fingers closer.

Reduce the zoom level of an image or web page.



---

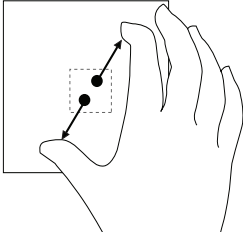
**Finger gestures****Allows you to:**

---

**Zoom in**

Touch the display with two fingers and then move the fingers apart.

Increase the zoom level of an image or web page.

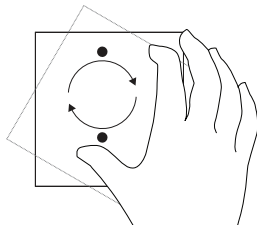


---

**Rotate**

Touch the display with two or more fingers and then move the fingers in a clockwise or counter-clockwise arc.

Rotate an object by 90 degrees.



---

For more information on using Windows 8 Start screen, see <http://support.dell.com/windows8> and <http://windows.microsoft.com/en-US/windows-8/get-started> as well as touching the Dell Getting Started with Windows application (on the Metro screen).


# Using the Keyboard and Mouse


If you purchased a wireless keyboard and mouse with your computer, they will be already paired. To use the keyboard and mouse, make sure both devices have batteries installed and are powered on.




## Pairing the wireless keyboard and mouse

If the keyboard and mouse do not work automatically you may need to add them manually:

- 1 Swipe from the right edge of the display to access Charms.
- 2 Touch **Settings**  → **Change PC Settings** → **Devices** → **Add a device**, to manually add a keyboard and mouse.

 **NOTE:** If the keyboard or mouse pairing has been lost for some reason, use these steps to pair them again.

 **NOTE:** The wireless keyboard and mouse may ship with a USB dongle. You do not need to install the dongle to use the wireless keyboard and mouse on this computer.

# Using Headphones/Microphones

Your computer has a headphone/microphone combo port that supports a headphone, a microphone, or a combo device to listen to music, record audio, or make voice calls.

**⚠ WARNING:** Listening to loud music for extended periods of time can lead to hearing loss.

**📎 NOTE:** It is recommended to keep the volume level low before connecting the headphones to your computer.

- 1 Connect headphones to the audio port.





- 2 Insert the headphones in your ears and adjust the volume level to a comfortable level.

**📎 NOTE:** The integrated speakers on your computer are muted automatically when you connect an audio device to the audio port.

**⚠ CAUTION:** To prevent damage to the headphones when disconnecting them from your computer, pull the connector and not the cable.


# Removing the SD Card

 **CAUTION:** To avoid data loss, ensure all read/write operations to the SD card are complete before removing it from the computer.

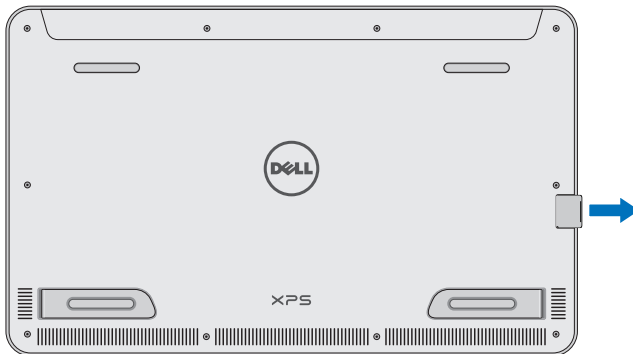
- 1 Touch the bottom left corner to enter Desktop mode.
- 2 Touch/click **Safely Remove Hardware**  in the notification area at the bottom-right corner of the screen.

 **NOTE:** If you don't see **Safely Remove Hardware** , touch **Show Hidden Icons** to display all icons in the notification area.




- 3 Touch **Eject SD Memory Card**. A message appears confirming that the SD card can be safely removed.

 **NOTE:** If a warning message appears stating the SD card cannot be removed, ensure all data transfers to and from the SD card are complete and try again.

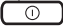

- 4 Push the SD card inwards to release it from the spring loaded SD-card slot.
- 5 Pull the SD card out of the SD-card slot.





# Turning Off the Screen

- Using the power button:  
Press and release the **Power and Sleep/Wake** button  to turn off the screen.
- Using Charms:
  - 1 Swipe from the right edge of the display to access Charms.
  - 2 Touch **Settings**  → **Power**  → **Sleep** to turn off the screen.



**NOTE:** If your computer is in a sleep state (computer is on, but screen is off), press the **Power and Sleep/Wake** button  or **Windows** button  once to turn on the screen.

# Turning Off Your Computer

- 1 Swipe from the right edge of the display to access Charms.
- 2 Touch **Settings**  → **Power**  → **Shut down** to turn off the computer.




# Managing Computer Settings

## Refreshing your computer


Refreshing your computer restores Windows to the original factory settings without deleting any of your personal files, installed applications, or personalization settings.


 **CAUTION:** Refreshing your computer removes all third-party applications.

- 1 Swipe from the right edge of the display to access Charms.
- 2 Touch **Settings**  → **Change PC settings** → **General** → **Refresh your PC without affecting your files**.
- 3 Touch **Get started**.
- 4 Read the instructions on the screen then touch **Next**.

## Resetting your computer


Resetting your computer returns the system software to original factory settings.

 **CAUTION:** Resetting your computer erases all data from your computer, including your account configuration, music, pictures, files, and so on. Ensure that you back up all the required data before you proceed.

- 1 Swipe from the right edge of the display to access Charms.
- 2 Touch **Settings**  → **Change PC settings** → **General** → **Remove everything and reinstall Windows**.
- 3 Touch **Get started**.
- 4 Read the instructions on the screen then touch **Next**.

## Using advanced startup



Use advanced startup if you have problems starting up your computer or if you want to change the computer's startup settings, such as allowing your computer to start up from a USB device or an optical media.

- 1 Swipe from the right edge of the display to access Charms.
- 2 Touch **Settings**  → **Change PC settings** → **General** → **Advanced startup** → **Restart now**.
- 3 Touch the **Troubleshoot** option to configure various startup settings.

# Synchronizing Your Computer

## Using a Microsoft account

You can sync user settings of your computer using a Microsoft account. When you sign in with your Microsoft account on your computer, you can automatically synchronize your settings, including internet browser history, application settings, and personal files and so on, with other Windows 8 computers.

- 1 Swipe from the right edge of the display to access Charms, then click **Settings**  → **Change PC Settings** → **Users** → **Switch to a Microsoft account** to switch a local account to your Microsoft account.
- 2 **Sync your settings** option is added to **PC Settings**.
- 3 Click **Settings**  → **Change PC Settings** → **Sync your settings** to configure synchronization options.

# Powered Stand (optional)

## Features



| Feature                       | Functionality   |
|-------------------------------|---|
| <b>1</b> Docking status light | Turns on when your computer is successfully docked (if the power adapter is attached to the powered stand). |
| <b>2</b> Docking connector    | Connects the computer to the docking port to provide power to your computer and charge the battery          |



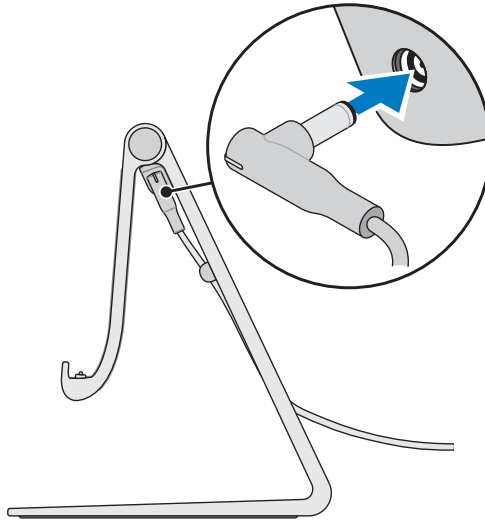
| Feature                      | Functionality   |
|------------------------------|---|
| <b>1</b> Powered stand hinge | Allows you to adjust the angle of your computer between 10 degrees and 70 degrees.  |
| <b>2</b> Power-adaptor port  | Connect the power adaptor to provide power to the computer, and charge the battery. |
| <b>3</b> Adapter cable clip  | Holds the adapter cable in place.   |

# Using the Powered Stand

## Connect the Power Adapter to the Powered Stand

**⚠ CAUTION:** Use only the supplied power adapter and power cable. Using unauthorized power adapters or power cables may cause severe damage to your computer and powered stand.

- 1 Connect the power adapter to the power-adapter port on your powered stand.



- 2 Connect the power adapter to an electrical outlet.

You can check the powered stand's status from:

- The light located at the front of the powered stand:

| LED behavior         | Description  |
|----------------------|--|
| Solid white color on | Computer is docked in the powered stand  |
| Off                  | Computer is not docked in the powered stand, or the power adapter is not connected to the stand. |

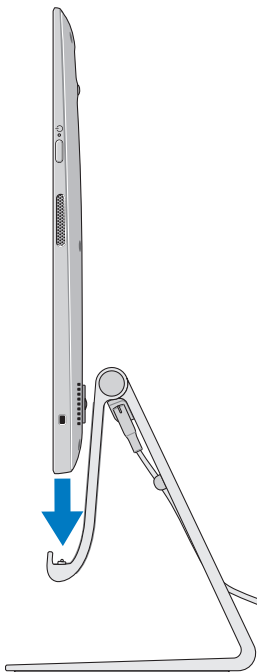
For more information on checking the battery status, see [battery charge indicator status table](#).




**NOTE:** If the LED is off and the computer is placed on the powered stand with power, it may not be properly docked. Realign the computer on the powered stand until the LED lights up.

# Dock Your Computer on the Powered Stand

- 1 Align the docking port on your computer to the docking connector on the powered stand.



- 2 Place your computer onto the powered stand.

 **NOTE:** The docking status light turns on when your computer is correctly seated on the powered stand and the powered stand is properly connected to a power source.




# Undocking Your Computer


Lift the computer from the powered stand.



# Cleaning Your Computer

 **CAUTION:** Disconnect all cables from your computer before cleaning it. Clean your computer with a soft cloth dampened with water. Do not use liquid or aerosol cleaners, that may contain flammable substances.

- 1 Turn off your computer. For more information on turning off your computer, see [Turning Off Your Computer](#).
- 2 Moisten a soft, lint-free cloth with either water or a display cleaner, and wipe the surface of the computer until it is clean. Do not allow water from the cloth to seep into the computer ports.

 **NOTE:** Do not spray cleaning solution directly onto the display. Only use products specifically designed for cleaning displays, and follow the instructions that are included with the product.

# Troubleshooting

## Battery Problems

| Problems                | Possible causes  | Possible solution  |
|-------------------------|--|--|
| Battery does not charge | <ul style="list-style-type: none"><li>• Your computer is not properly plugged into a power source.</li><li>• You are using an incorrect power adapter/cable.</li><li>• The power outlet is not be working.</li><li>• The power adapter/cable is too loosely connected.</li></ul> | <ol style="list-style-type: none"><li><b>1</b> Use the supplied power adapter and power cable.</li><li><b>2</b> Unplug the power adapter from the wall and verify that the outlet is functioning.</li><li><b>3</b> Check all cable connections and plug back into the wall, then back into the computer.</li><li><b>4</b> Check all connectors to ensure proper connectivity.</li><li><b>5</b> Verify that the power adapter's white LED is on. If it is not, unplug and re-plug the power adapter and/or try another outlet that is known to work. If the LED still does not turn on, try replacing the power adapter</li></ol> |
|                         | The computer temperature is lower than 0 °C or higher than 35 °C.  | Charge the battery in an ambient temperature between 0 °C and 35 °C.   |
|                         | The battery or power adapter is damaged.   | Contact technical support or the manufacturer to replace the damaged parts.  |

## System problem

| Problems                  | Possible causes  | Possible solution   |
|---------------------------|--|---|
| Computer does not turn on | The battery is completely discharged.                      | Connect your computer to a power source using the power adapter.  |
|                           | Your computer could be in an unresponsive or locked state. | Press and hold the power button for 11 seconds to perform a hard shut down, then press the power button to turn the computer back on.   |
|                           | Your computer may be in shipping mode.                     | Computers shipped from the factory will be set in shipping mode. To get out of this mode, the user needs to plug in the power adapter and press the power button to turn on the computer. After the initial power up, the computer behaves as normal. This is to avoid the computer from being accidentally turned on during shipping and draining the battery. |

|  |   |  |
|--|---|--|
| <p>Computer is not responding or behaving unexpectedly</p> | <p>Your computer could be in a hung or locked state.</p>    | <ol style="list-style-type: none"> <li><b>1</b> Reboot the computer. See <a href="#">Turning Off Your Computer</a> and <a href="#">Turning On Your Computer</a>.</li> <li><b>2</b> Refresh your computer. See <a href="#">Refreshing your computer</a>.</li> <li><b>3</b> Reset your computer. See <a href="#">Resetting your computer</a>.</li> <li><b>4</b> Contact Dell's support service. Go to <a href="#">support.dell.com</a> or <a href="#">dell.com/ContactDell</a>.</li> </ol> |
| <p>Software or feature is not working as expected</p>      | <p>The application or feature could be in a hung state.</p> | <p>Software updates may have been downloaded in the background. Restart your computer. Swipe from the right edge of the display to access Charms and touch <b>Settings</b> → <b>Power</b> → <b>Restart</b> to restart the computer.</p>  |

## Touchscreen problem

| <b>Problems</b>                                  | <b>Possible causes</b>  | <b>Possible solution</b>  |
|--|---|---|
| <p>Touchscreen responds slowly or improperly</p> | <p>Your computer display may be dirty, or you may need to adjust display settings</p> | <ul style="list-style-type: none"> <li>• Turn off your computer screen to avoid accidental touches, then gently wipe the display with a clean dry cloth.</li> <li>• Adjust display settings in Windows Desktop, <b>Control Panel</b> → <b>Appearance and Personalization</b> → <b>Display</b>.</li> </ul> |

## Network problem

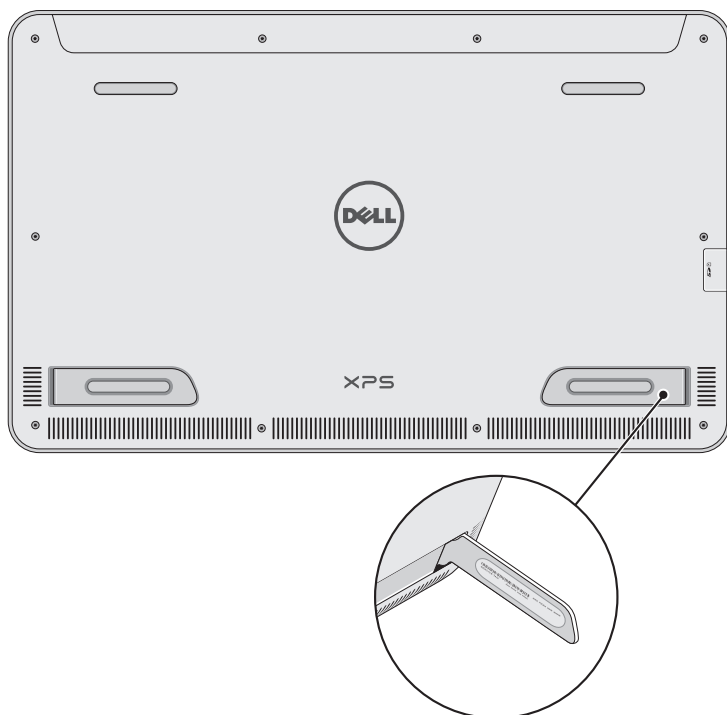
| Problems                  | Possible causes   | Possible solution   |
|---------------------------|---|---|
| No wireless connection    | Your computer is not able to properly access a wireless signal. | <ol style="list-style-type: none"><li>1 Check if the wireless radio is on. See <a href="#">Enabling/Disabling Wi-Fi</a>.</li><li>2 Move closer to the wireless access point.</li><li>3 Reset the wireless router if using a private network.</li><li>4 Open the browser to view the landing page if using a public network, and follow the instructions given by the public network.</li><li>5 Try another wireless connection.</li></ol> |
| Slow Internet connections | The signal strength is not strong enough.                       | <ol style="list-style-type: none"><li>1 Move your computer to a different location for better signal reception.</li><li>2 Contact your Internet Service Provider.</li></ol>   |

# Locating Your Service Tag and Express Service Code

You need your computer's Service Tag/Express Service Code when you contact Dell regarding your computer. The Express Service Code helps the automated telephone support system redirect your call to the appropriate support department.

The Service Tag and Express Service Code for your computer are located on a label at the back of your computer.

**⚠ CAUTION:** Lay your computer face down before you look for Service Tag and Express Service Code.



# Specifications

## Physical dimensions

|        |                          |
|--------|--------------------------|
| Height | 283.70 mm (11.17 inches) |
| Width  | 463.60 mm (18.25 inches) |
| Depth  | 17.70 mm (0.70 inch)     |
| Weight | 2.20 kg (4.85 lb)        |

## Hardware

|                       |   |
|-----------------------|---|
| Processor             | 3rd Generation Intel Core i3/i5/i7 ULT<br>Pentium Dual Core                         |
| Chipset               | Intel Panther Point HM77  |
| Graphics              | Intel HD 4000 for Core I processors<br>Intel HD for Pentium Dual Core<br>processors |
| Internal Memory (RAM) | 4 GB or 8 GB<br>DDR3L 1600 MHz  |
| Internal Storage      | 2.5 inch HDD (SATA3) or<br>SSD (mSATA)  |
| Speaker Power         | 2 watts   |
| Camera                | HD 720 p (1280 x 720)   |



## Touchscreen display

|                    |   |
|--------------------|---|
| Type               | 18.4" Full HD with multi-point capacitive touch |
| Maximum resolution | 1920 x 1080                                     |
| Aspect ratio       | 16:9  |
| Brightness         | 350 nits  |
| Viewing angle      | 89 degrees                                      |
| Contrast ratio     | 1000:1  |
| Color depth        | 262.144 bits                                    |

## Ports and connectors

|         |   |
|---------|---|
| Audio   | 1 3.5mm audio jack/port   |
| SD card | 1 SD card slot  |
| Dock    | 1 docking port  |
| USB     | 2 USB 3.0 ports<br>1 internal USB 2.0 port for wireless keyboard and mouse receiver |

## Power Adapter

|                         |                                    |
|-------------------------|------------------------------------|
| Input voltage           | 90 -240 VAC                        |
| Input current (maximum) | 1.6 A                              |
| Input frequency         | 50-60 Hz                           |
| Output power            | 65 W                               |
| Output current          | 3.34 A (maximum)                   |
| Rated output voltage    | 19.5 VDC                           |
| Temperature range:      |                                    |
| Operating               | 0 °C to 40 °C (32 °F to 104 °F)    |
| Storage                 | -40 °C to 70 °C (-40 °F to 158 °F) |

## Environmental requirements

---

Temperature range:

---

|               |                                    |
|---------------|------------------------------------|
| Operating     | 0 °C to 35 °C (32 °F to 95 °F)     |
| Non-Operating | -40 °C to 65 °C (-40 °F to 149 °F) |

---

Relative humidity (maximum):

---

|               |                            |
|---------------|----------------------------|
| Operating     | 10% to 90% (noncondensing) |
| Non-Operating | 5% to 95% (noncondensing)  |

---

Maximum Vibration (measured using a random vibration spectrum that simulates user environment):

---

|               |           |
|---------------|-----------|
| Operating     | 0.66 GRMS |
| Non-Operating | 1.30 GRMS |

---

Maximum Shock

---

|               |       |
|---------------|-------|
| Operating     | 140 G |
| Non-Operating | 163 G |

---

Altitude (maximum, unpressurized):

---

|               |   |
|---------------|---|
| Operating     | -15.2 m to 3048 m (-50 ft to 10,000 ft)   |
| Non-Operating | -15.2 m to 10,668 m (-50 ft to 35,000 ft) |

---