

[Back to Contents](#)

Network Details

This window provides information about the selected network. The information varies, based on the network type and status:

- Network activated and connected
- Network activated, not connected
- Network not activated, not connected



Network Name	The name of the network, as defined by the network service provider.
--------------	--

Network Type	Either Not activated , or Home . A network that is not activated needs to be activated before you can access the internet over it. To activate a network, select the network and click Connect . This will start the activation process. Your home network is the WiMAX network you use to access the internet.
Network Status	Connected or Not connected . Only an activated network can be connected (for this window).
Signal	This is the signal strength as received at the adapter. It can range from Poor to Excellent . Poor signal strength may affect the apparent speed of the connection, or the connection may be dropped.
Security	Always Enabled for WiMAX networks.
IP address	This internet protocol address for your WiMAX network adapter. This information is only present when the network is connected.

[Back to Top](#)

[Back to Contents](#)

[Trademarks and Disclaimers](#)

[Back to Contents](#)

Detailed Information

The Detailed Information window has the following information tabs:

- [Adapter](#)
 - [Current Connection](#)
-

Adapter

This tab lets you select the adapter from a drop-down list of supported WiMAX adapters. (Adapters not supported by the Intel(R) PROSet/Wireless WiMAX utility are not listed here.) Then click [Details](#) to learn learn details for that adapter.

Adapter Details

This window provides detailed information about the selected WiMAX adapter. This information includes:

- **Manufacturer**
- **Model**
- **Model version**
- **MAC address**

If the WiMAX adapter is not present in the laptop, all fields are filed with: **Adapter not found.**

Current Connection

This tab provides detailed information about the current connection. Information provided is refreshed

periodically and will change based on your activity and location relative to WiMAX network transceivers. If you are not connected to a WiMAX network, then all fields are filled with **Not connected**.

Connected Network	
Name	The name of the WiMAX network you are currently connected to.
Total connection time	Indicates the time duration for this connection, from the moment at which the connection was made.
Network Statistics	
Channel Frequency	The channel frequency for this connection.
RSSI	
CINR	
Transmit power	
Data Transferred	
Total bytes sent	
Total bytes received	
Total packets sent	
Total packets received	

[Back to Top](#)

[Back to Contents](#)

[Trademarks and Disclaimers](#)

Intel(R) PROSet/Wireless WiMAX Connection Utility

User Guide

Introduction

This user guide describes how to use the Intel(R) PROSet/Wireless WiMAX Connection Utility and the following Intel(R) WiMAX adapters:

- Intel® Wireless WiMAX/WiFi Link 5150
 - Intel® Wireless WiMAX/WiFi Link 5350
-

Table of Contents

- [What is WiMAX?](#)
- [What is the Intel\(R\) PROSet/Wireless WiMAX Connection Utility?](#)
 - [Start Intel\(R\) PROSet/Wireless WiMAX Utility](#)
 - [Intel\(R\) PROSet/Wireless WiMAX Utility Main Window](#)
 - [Connection Status](#)
 - [Available WiMAX Networks](#)
 - [Icons](#)
 - [Options](#)
 - [Taskbar](#)
 - [Close Intel\(R\) PROSet/Wireless WiMAX Utility](#)
- [Connect to a WiMAX Network](#)
 - [First Time Connection to a WiMAX Network](#)
 - [Connecting to an Activated WiMAX Network](#)
 - [Automatic and Manual Connection](#)
 - [Disconnect from WiMAX Network](#)
- [Updates from Your WiMAX Network Service Provider](#)
- [Advanced Features](#)

- [All Status Messages](#)
 - [Specifications](#)
 - [Troubleshooting](#)
 - [Customer Support](#)
 - [Warranty](#)
-

Information in this document is subject to change without notice.

© 2008 Intel Corporation. All rights reserved. Intel Corporation, 5200 N.E. Elam Young Parkway, Hillsboro, OR 97124-6497 USA

The copying or reproducing of any material in this document in any manner whatsoever without the written permission of Intel Corporation is strictly forbidden. Intel(R) is a trademark or registered trademark of Intel Corporation or its subsidiaries in the United States and other countries. Other trademarks and trade names may be used in this document to refer to either the entities claiming the marks and names or their products. Intel disclaims any proprietary interest in trademarks and trade names other than its own. *Microsoft* and *Windows* are registered trademarks of Microsoft Corporation. *Windows Vista is either a registered trademark or trademark of Microsoft Corporation in the United States and/or other countries.*

*Other names and brands may be claimed as the property of others.

Intel Corporation assumes no responsibility for errors or omissions in this document. Nor does Intel make any commitment to update the information contained herein.

"IMPORTANT NOTICE FOR ALL USERS OR DISTRIBUTORS:

CONTENT IN DEVELOPMENT Intel wireless LAN adapters are engineered, manufactured, tested, and quality checked to ensure that they meet all necessary local and governmental regulatory agency requirements for the regions that they are designated and/or marked to ship into. Because wireless LANs are generally unlicensed devices that share spectrum with radars, satellites, and other licensed and unlicensed devices, it is sometimes necessary to dynamically detect, avoid, and limit usage to avoid interference with these devices. In many instances Intel is required to provide test data to prove regional and local compliance to regional and governmental regulations before certification or approval to use the product is granted. Intel's wireless LAN's EEPROM, firmware, and software driver are designed to carefully control parameters that affect radio operation and to ensure electromagnetic compliance (EMC). These parameters include, without limitation, RF power, spectrum usage, channel scanning, and human exposure.

For these reasons Intel cannot permit any manipulation by third parties of the software provided in binary format with the wireless LAN adapters (e.g., the EEPROM and firmware). Furthermore, if you use any patches, utilities, or code with the Intel wireless LAN adapters that have been manipulated by an unauthorized party (i.e., patches, utilities, or code (including open source code modifications) which have not been validated by Intel), (i) you will be solely responsible for ensuring the regulatory compliance of the products, (ii) Intel will bear no liability, under any theory of liability for any issues associated with the modified products, including without limitation, claims under the warranty and/or issues arising from regulatory non-compliance, and (iii) Intel will not provide or be required to assist in providing support to any third parties for such modified products.

Note: Many regulatory agencies consider Wireless LAN adapters to be "modules", and accordingly, condition system-level regulatory approval upon receipt and review of test data documenting that the antennas and system configuration do not cause the EMC and radio operation to be non-compliant."

January 2008

[Back to Contents](#)

Intel(R) PROSet/Wireless WiMAX Main Window

[What is the Intel\(R\) PROSet/Wireless WiMAX Connection Utility?](#)

[Start Intel\(R\) PROSet/Wireless WiMAX Connection Utility](#)

[Intel\(R\) PROSet/Wireless WiMAX Connection Utility Main Window](#)

[Connection Status](#)

[View WiMAX Networks](#)

[Icons](#)

[Options](#)

[Close Intel\(R\) PROSet/Wireless WiMAX Connection Utility](#)

What is the Intel(R) PROSet/Wireless WiMAX Connection Utility?

The Intel(R) PROSet/Wireless WiMAX Connection Utility (or just Intel(R) PROSet/Wireless WiMAX) lets you easily manage your laptop connections to WiMAX networks. Your first connection is simple, and based on your preferences and previous connections, the utility will keep track of available networks and can connect to them as needed. The utility is completely configurable. And your WiMAX adapter and connection can be easily turned off whenever necessary.

Start Intel(R) PROSet/Wireless WiMAX Connection Utility

Because your laptop computer has a WiMAX adapter, a software program is always managing the adapter. If a program other than Intel(R) PROSet/Wireless WiMAX is managing your WiMAX adapter, you first need to close/stop that program. You can then start Intel(R) PROSet/Wireless WiMAX.

To start Intel(R) PROSet/Wireless WiMAX, use one of the following methods:

- Click **Start > All Programs > Intel(R) PROSet/Wireless WiMAX Connection Utility**.
- Right-click the [Taskbar icon](#) located in the lower right corner of your Windows Desktop. Click **Configure WiMAX...**
- Double-click the Taskbar icon to open Intel(R) PROSet/Wireless WiMAX.



Intel® WiMAX Utility

Copyright ©2006 Intel Corporation. All Rights Reserved.
*Other names and brands may be claimed as the property of others.

If there are any issues encountered when starting the application, a window is displayed showing the possible reasons. See [Reasons Intel\(R\) PROSet/Wireless WiMAX Connection Utility is not starting](#) for more information.

Intel(R) PROSet/Wireless WiMAX Connection Utility Main Window

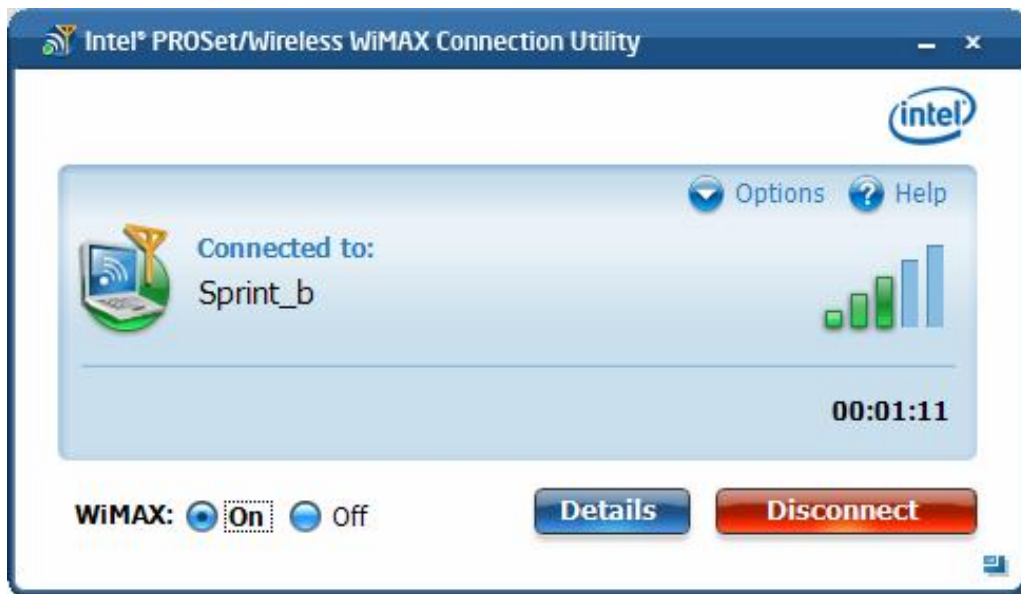
The Intel(R) PROSet/Wireless WiMAX utility main window lets you:

- Connect to a network.
- Activate a new network for connection.
- View current connection status information.
- Search for available networks. These are both activated, home networks and un-activated networks.



Connection Status Area

This area tells you about the current connection status. For example, if you are currently connected to a network, this area shows you current network name, signal quality, and connection duration.



Information



Connected to: Indicates the WiMAX network you are currently connected to. There are several other status messages displayed in this area. See [Connection Status Messages](#).



Indicates signal strength. The *number* of green bars may range from one to five, with more green bars indicating a stronger signal. Stronger signals enable more rapid connections. Weaker signals may result in dropped connections.

Time

Indicates the time duration for this connection, from the moment at which the connection was made.

Buttons

[Details](#)

Provides details of the highlighted or connected network.

Disconnect

Click **Disconnect** to disconnect from the currently connected network. The network will then be listed in the Available Networks list. This button is not present if you are not connected to a network.

WiMAX On/Off

Turns the WiMAX radio on or off. If you are connected to a network and you turn the radio off, you will be disconnected. If the utility is searching for networks and you turn the radio off, the search will be stopped.

Clicking **Options** presents these choices:

Options

- [Preferences](#)
- [Detailed Information](#)
- [Advanced...](#)
- **About:** Provides information about the Intel(R) PROSet/Wireless WiMAX Utility.



Help

Provides this help in using the Intel(R) PROSet/Wireless WiMAX Utility.


View WiMAX Networks



This area lists the detected networks. Detected networks are shown in the following order:

- **Connected network.** This is the WiMAX network you are currently connected to.
- **Networks available to connect:** This list includes activated **home** networks and **un-activated** networks.
 - A **home** network is indicated by the  icon. Double-click on any home network, you will then be connected to that network. You can also right-click on the network to select either **Connect** or [Show details](#).
 - A **un-activated** network is indicated by the  icon. An un-activated network is one that you have not activated for service. Double-click on an un-activated network and you will then begin the activation process. You can also right-click on the network to select either **Connect** to begin the activation process, or [Show details](#).

The **Networks** area displays the following information for each network:

Type	Indicated by the icon, this tells you if the network is a home network or is un-activated. A network that is un-activated is not yet available for connection, you first need to activate service. To activate a un-activated network, select it and click Connect .
Name	Name of the listed network
	Indicates signal strength. The <i>number</i> of green bars may range from one to five, with more green bars indicating a stronger signal. Stronger signals enable more rapid connections. Weaker signals may result in dropped connections.

Buttons

The Networks areas has the following buttons:

Search for Networks	Causes the adapter to search for all networks. <i>This may take several minutes to complete.</i> Detected networks are shown in the list, first home networks and then un-activated networks. Once you begin a network search, there is no way to stop the search, other than clicking WiMAX Off , which will turn off the WiMAX radio and halt the search.
----------------------------	--

[Details](#)

Provides details of the current network selected from the networks list.

When the selected network in the list is an activated (for example, a home network), then clicking **Connect** opens a connection with that network. Information about the connection is provided in the [Network Connection Status](#) window. If the selected network is not yet activated, the clicking **Connect** will start the activation process. You can also connect to an available network by double-clicking on it. This button is grayed out if no un-connected networks are available.

Connect

Icons

The following icons are used in the main window to provide information. Additionally, icons used in the [taskbar](#) keep you informed about WiMAX networks and your WiMAX adapter.

Icon

Meaning



Used in the Connection Status area, this indicates that you are connected to a WiMAX network. There are several other status messages and icons displayed in this area. See [Connection Status Messages](#).



Indicates signal strength. The *number* of green bars may range from one to five, with more green bars indicating a stronger signal. Stronger signals enable more rapid connections. Weaker signals may result in slower or dropped connections.



Indicates that this is a home network. You have already activated service with this network and it is available for connection.



Indicates that this is a secure WiMAX network. WiMAX connections are all encrypted to protect the privacy of your connection. WiMAX supports the DES3 and AES security protocols, as specified in IEEE specification 802.16.



Indicates that you have not activated this network. To make the network available, you need to first [Activate](#) service.

Close Intel(R) PROSet/Wireless WiMAX Utility Window

To close the utility main window, click **X** on the main window, upper-right corner. Closing the utility does not close a connection. The utility and the radio continue to operate. To close a connection, click **Disconnect** on the main window.

[Back to Top](#)

[Back to Contents](#)

[Trademarks and Disclaimers](#)

[Back to Contents](#)

Intel(R) PROSet/Wireless WiMAX Connection Utility did not start

If Intel(R) PROSet/Wireless WiMAX does not start, a window opens listing possible reasons. An example of the reasons may be:

- **No WiMAX device was found.** The required WiMAX adapter is not installed in the computer, or the adapter is not working correctly. Check that a proper working adapter is installed. (Turn off the computer before doing this.)
 - **The WiMAX adapter has been disabled.** The adapter may be disabled via the Windows XP* or Windows Vista* operating system. Check the Device Manager to be sure that the adapter is enabled.
 - **The WiMAX driver and/or App/Srv are not operational.** You may need to reboot the computer. Or you may need to reinstall the Intel(R) PROSet/Wireless WiMAX software.
-

Another Application is running WiMAX

If you start Intel(R) PROSet/Wireless WiMAX and this message is displayed, it is because another application is controlling the WiMAX adapter and connections. To use Intel(R) PROSet/Wireless WiMAX to activate networks and make connections, click **Enable Intel(R) PROSet/Wireless WiMAX Connection Utility**.

[Back to Top](#)

[Back to Contents](#)

[Trademarks and Disclaimers](#)

[Back to Contents](#)

WiMAX Overview

WiMAX is a next generation wireless network communications technology. WiMAX is similar to Wi-Fi, except that WiMAX provides high-speed, broadband access over a much larger area. For fixed WiMAX stations, the range of coverage may be up to 30 miles. WiMAX networks also enjoy less radio interference than Wi-Fi. Notebook computers and Mobile Internet Devices enabled for WiMAX service can access the Internet when WiFi hotspots are not available. WiMAX service can let a mobile user, for example in a bus, access the internet and remain connected as the bus moves across the city.

WiMAX Benefits

WiMAX provides access to the Internet in more places than current WiFi hotspots. WiMAX serves mobile users with a broader range of wireless coverage. High-speed connections provide access to richer content, an improved user experience, and more complex media and gaming.

View a Demo about WiMAX

Click here to learn more about WiMAX. <<Link to C:\Program Files\Intel WiMAX Demo\Intel_WiMAX_Demo.exe>>

[Back to Top](#)

[Back to Contents](#)

[Trademarks and Disclaimers](#)

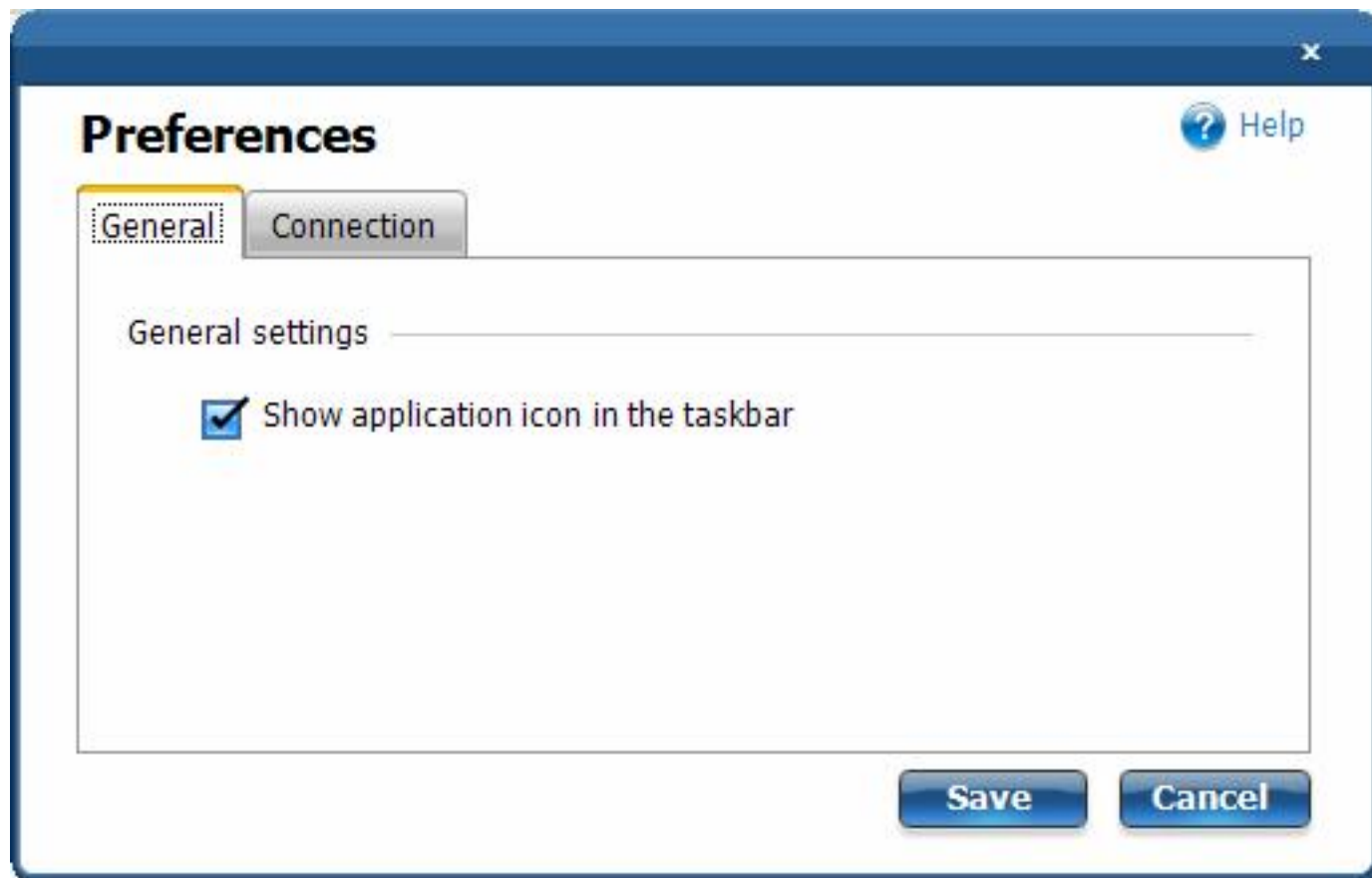
[Back to Contents](#)

Preferences

The Preferences window has parameters you can set. They are presented on two tabs:

- [General Preferences](#)
 - [Connection Preferences](#)
-

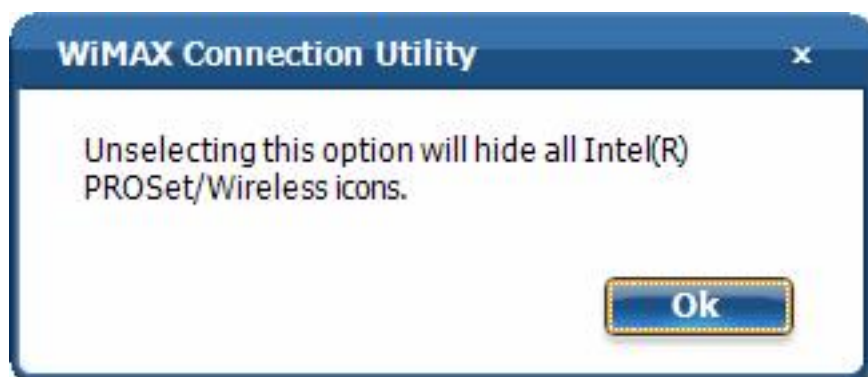
General Preferences



The General Preferences tab lets you select to **Show application icon in the taskbar**. See [Taskbar Icons](#) to see what they look like.

If you choose to uncheck this box, you will be cautioned with a message: **Unselecting this option will**

hide all Intel(R) PROSet/Wireless icons. If you uncheck this box and turn off the application icons, you will hide *all* icons for both Intel(R) PROSet/Wireless WiFi and Intel(R) PROSet/Wireless WiMAX. Click **OK** to make your selection.



Connection Preferences

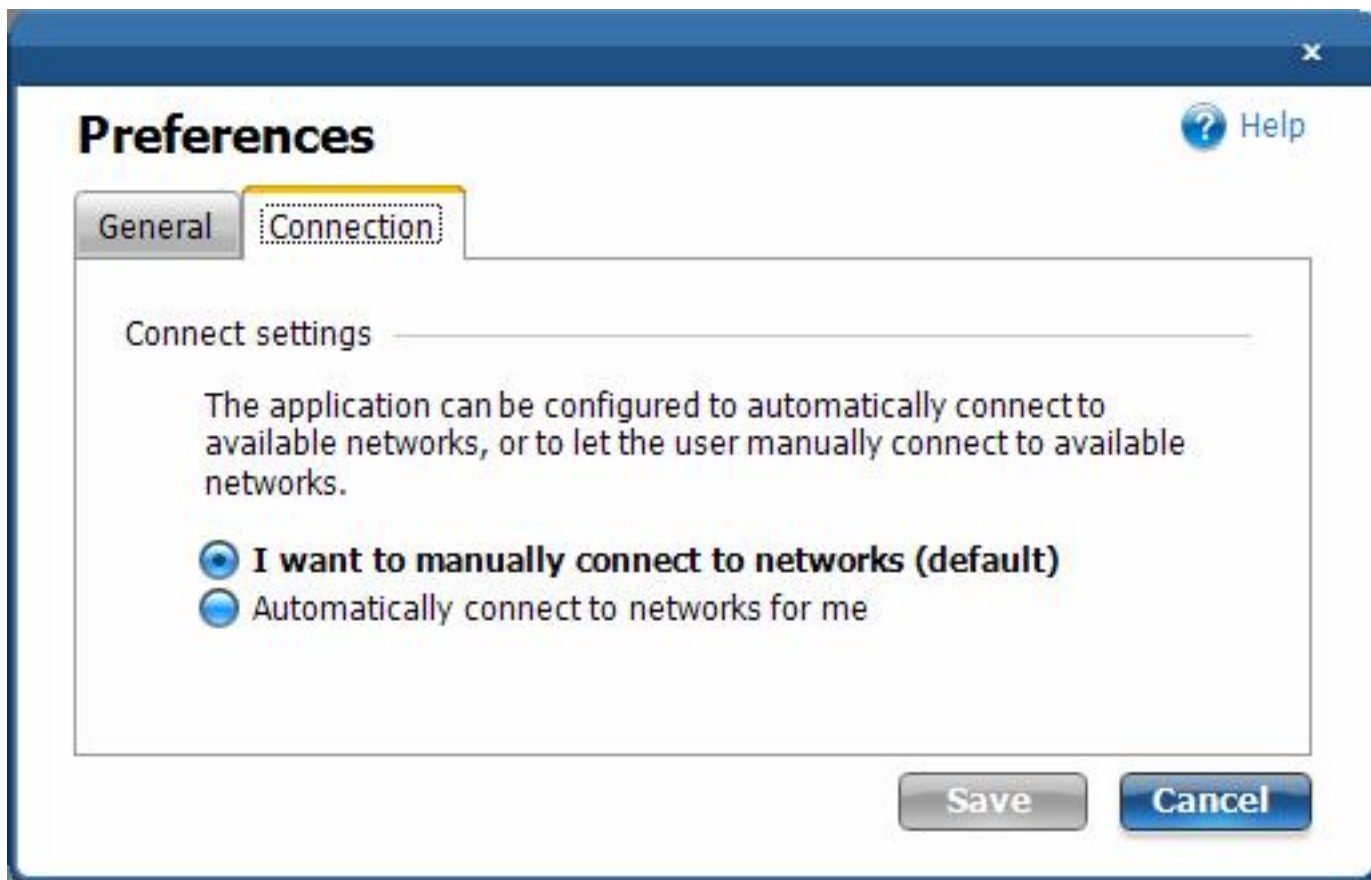
The Intel(R) PROSet/Wireless WiMAX utility is set by default for *manual* connection. This means that to connect to a WiMAX network, you must do one of the following::

- Right-click the taskbar icon and select **Connect WiMAX**.
- On the main window, in the **Networks available to connect** list, select the network and click **Connect** (or double-click on the network).

Otherwise you will not be connected.

You can configure the utility to perform *automatic* connection to the most recent home network that you were connected to. This means that whenever you turn on the laptop, the utility will connect to that network (unless you are of range). To configure the utility connection preferences:

1. On the Intel(R) PROSet/Wireless WiMAX utility main window, click **Options**.
2. Click **Preferences**.



3. At the Connection Preferences tab, you can choose one of the following settings:
 - **I want to manually connect to networks.** This is the default setting. The utility will not automatically connect to any WiMAX network, you must connect to the desired network.
 - **Automatically connect to networks for me.** The utility will automatically connect to the last connected, activated network. The utility will *never* automatically connect to an un-activated network.
4. Click **Save**.

[Back to Top](#)

[Back to Contents](#)

[Trademarks and Disclaimers](#)

[Back to Contents](#)

Searching for WiMAX Networks

The Search Networks option lets you perform two kinds of searches:

- [Preferred](#)
- [All](#)

Preferred Search

A Preferred search looks for home networks and available networks, first listing the last connected network. This search is best if you have not left the area where you last connected to a WiMAX network. A Preferred search is faster than an All search, and consumes less battery power. The search results are displayed in the Network List.

All Search

An All search looks for all WiMAX networks present in the area. This includes all available networks and un-activated networks. The search results are displayed in the Network List. By default, available networks are listed first. An All search may take approximately thirty seconds to two minutes, depending on the number of networks detected. An All search consumes more battery power than a Preferred search.

[Back to Top](#)

[Back to Contents](#)

[Trademarks and Disclaimers](#)

[Back to Contents](#)

Specifications

This section in development.

[Back to Top](#)

[Back to Contents](#)

[Trademarks and Disclaimers](#)

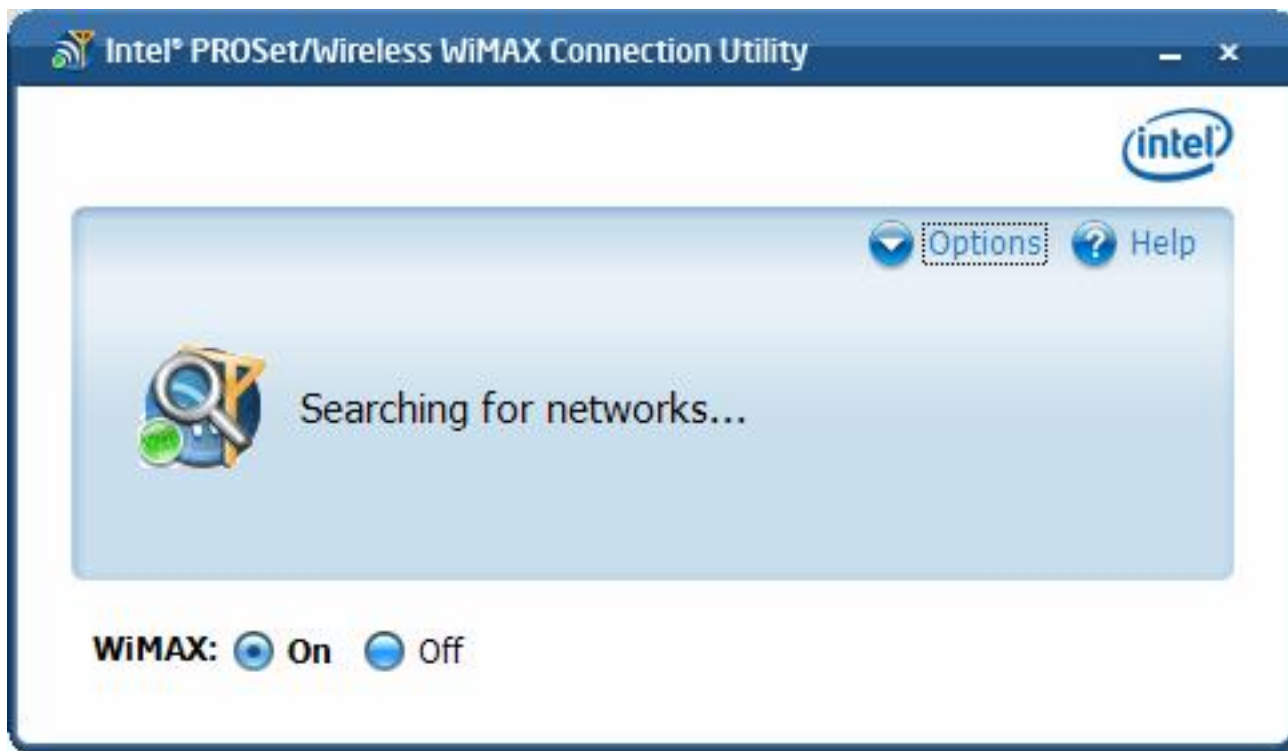
[Back to Contents](#)

Connection Status Messages

You will see different messages from time about your WiMAX connection, service, and the WiMAX adapter. These messages are listed next. Click on any message to learn more information.

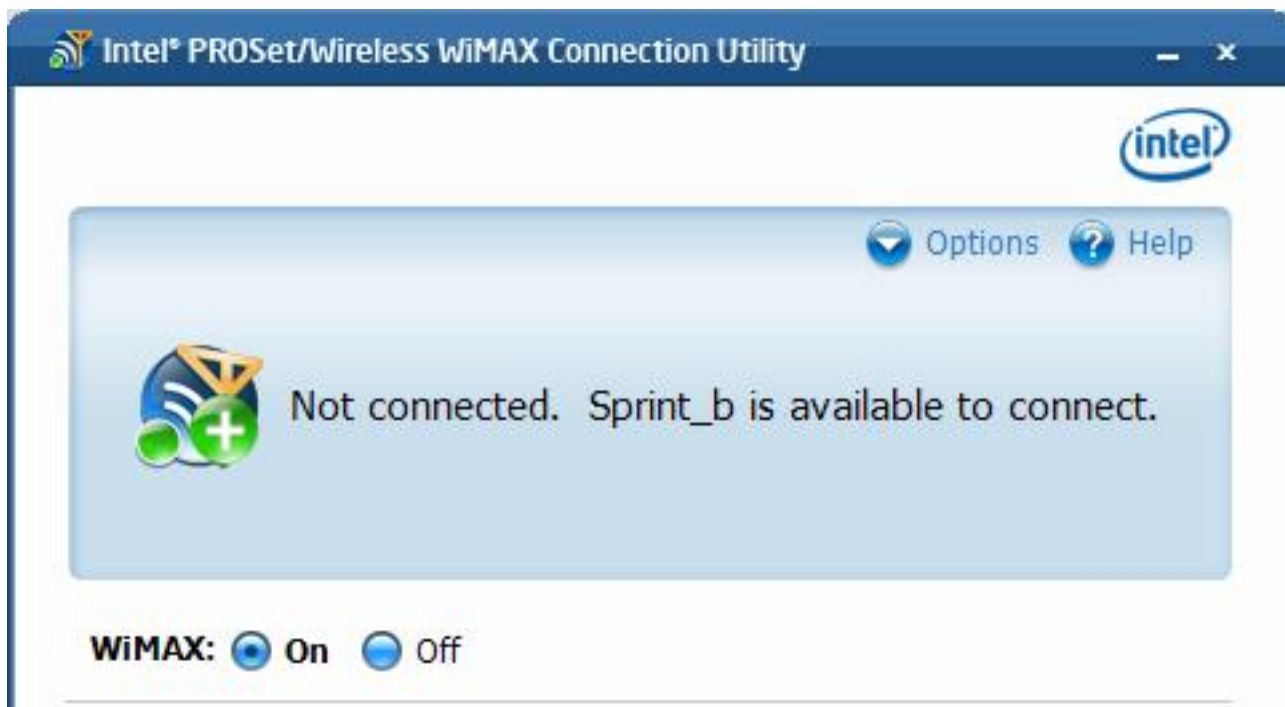
- [Searching for networks...](#)
 - [Not connected. *Network A* is available to connect.](#)
 - [Connecting to *Network A*...](#)
 - [Connecting to network...](#)
 - [Connected to *Network A*...](#)
 - [Not connected.](#)
 - [The hardware radio switch is off. To connect, turn on the hardware radio switch.](#)
 - [WiMAX is off.](#)
 - [Another application is currently managing WiMAX connections.](#)
 - [Unrecognized Operator.](#)
 - [WiMAX is not ready.](#)
 - [An unexpected version of one of the WiMAX software modules was detected.](#)
-

Searching for networks...



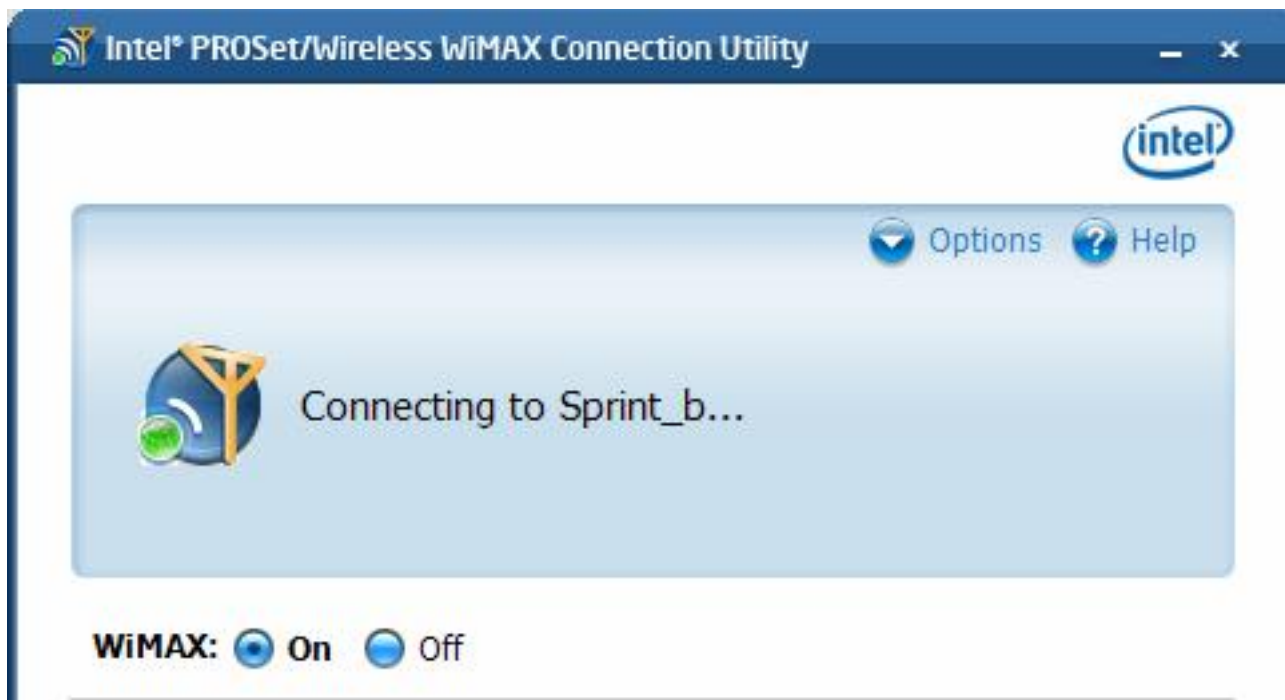
This message is displayed when the adapter is searching for WiMAX networks, after you have clicked **Search for networks**. This search is for *all networks*; networks that you have connected to before, and networks that you have never connected with. The icon itself changes to show that the search is in progress and stops when the search has ended. The results of the search are shown in the **Networks available to connect** list.

Not connected. Network A is available to connect



This message tells you that a network is available to connect. You can connect to it by double clicking on the network or clicking **Connect**.

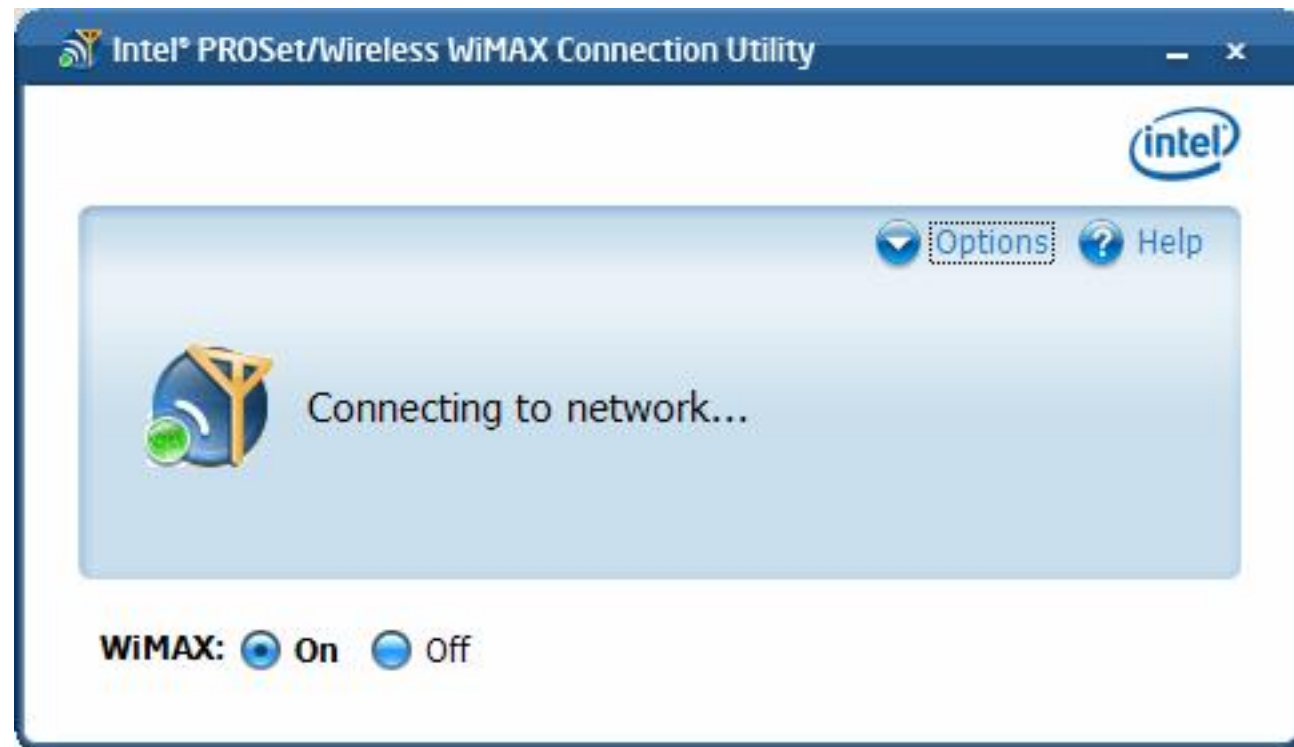
Connecting to *Network A...*



After clicking **Connect** or double clicking on a network in the **Networks available to connect** list, the Intel(R) PROSet/Wireless WiMAX utility connects to the network. This is either a home network or an

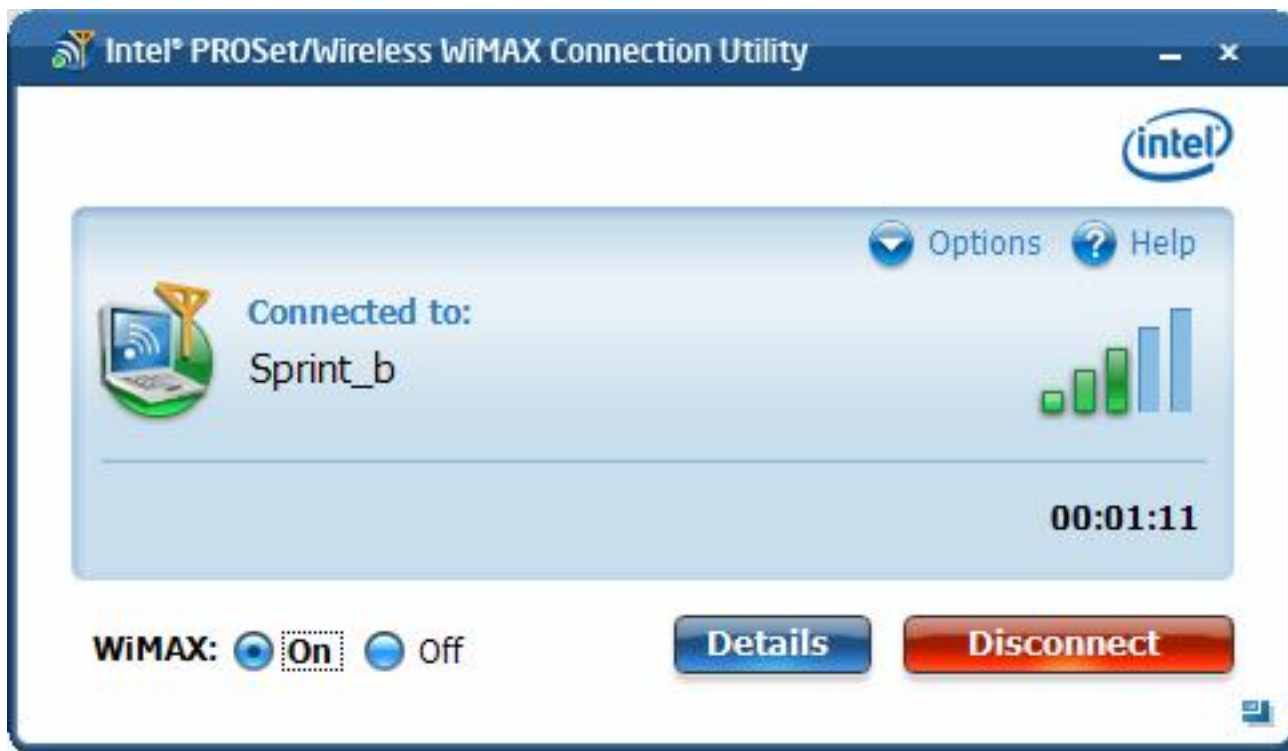
un-activated network, in which case you will begin the activation process for this network.

Connecting to network ...



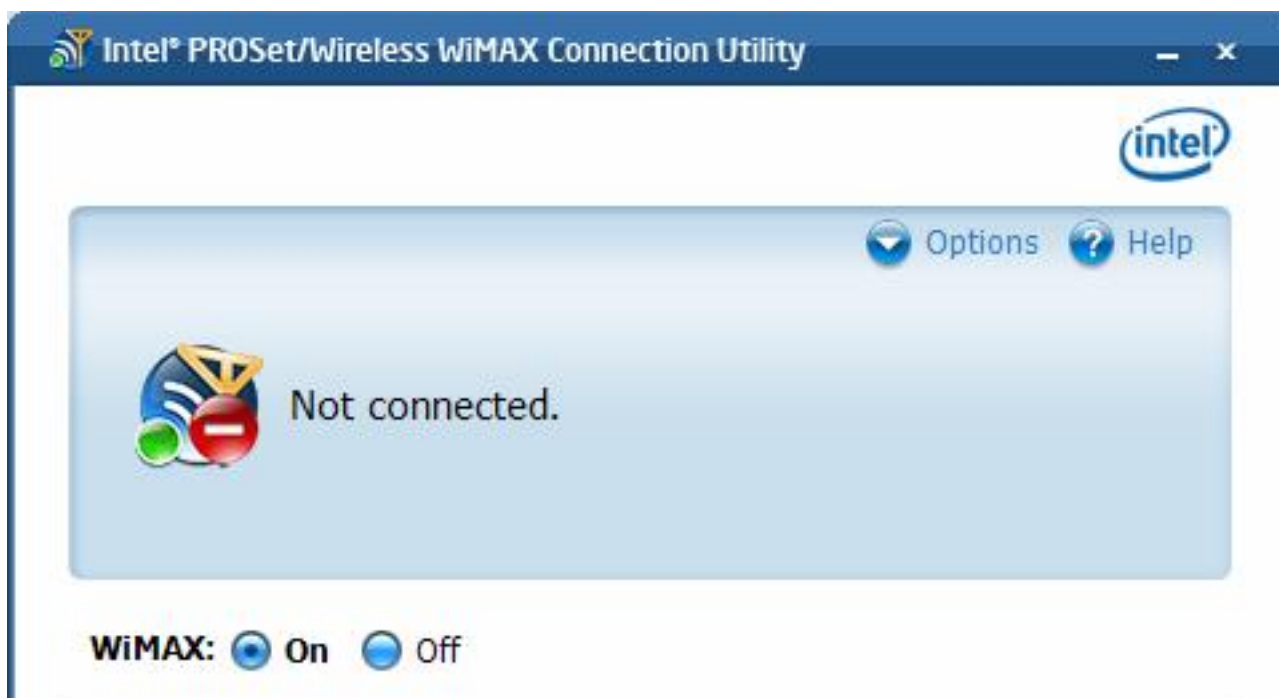
This message displays when after you have turn on Automatic Connection mode and the Intel(R) PROSet/Wireless WiMAX is initiating a connection to a home network. The icon changes during the connection process.

Connected to: *Network A*



You are connected to a WiMAX network. For a complete description of features, controls, and indicators on this window, see [Main Window](#).

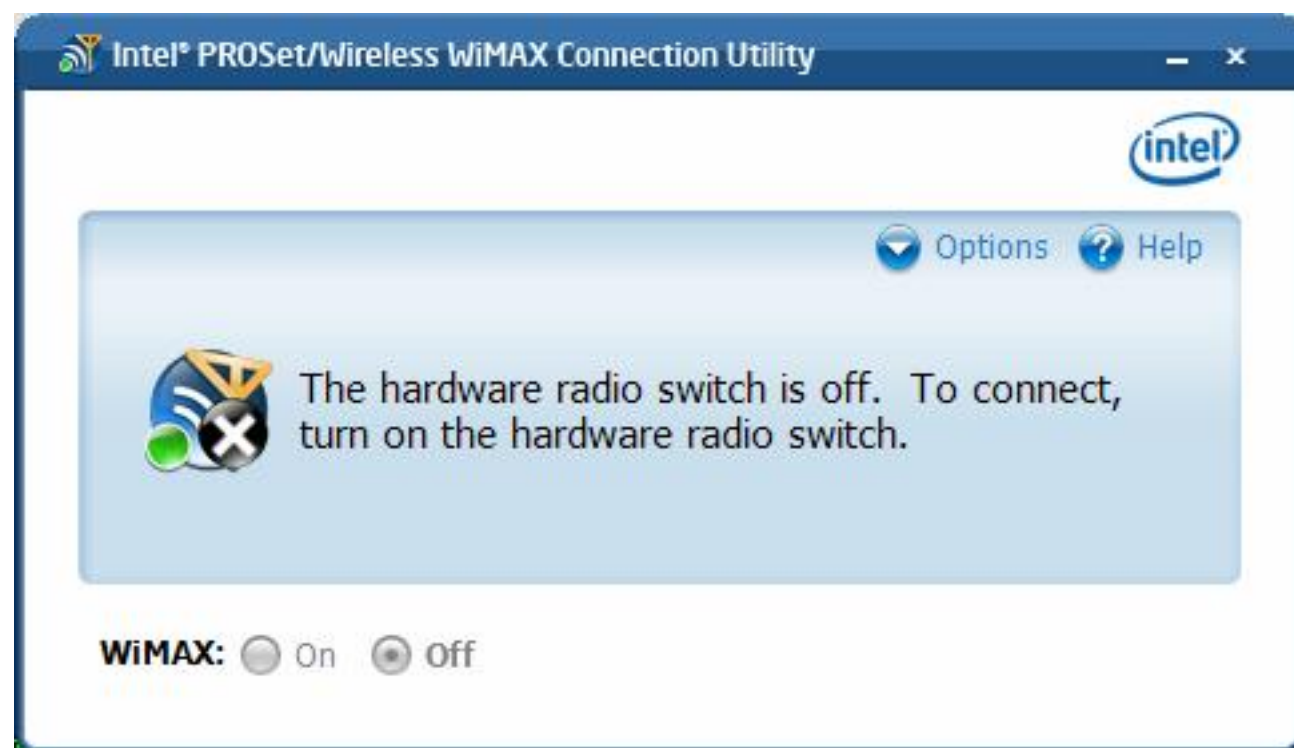
Not connected



You are currently not connected to a WiMAX network. This message does not imply an error, but only

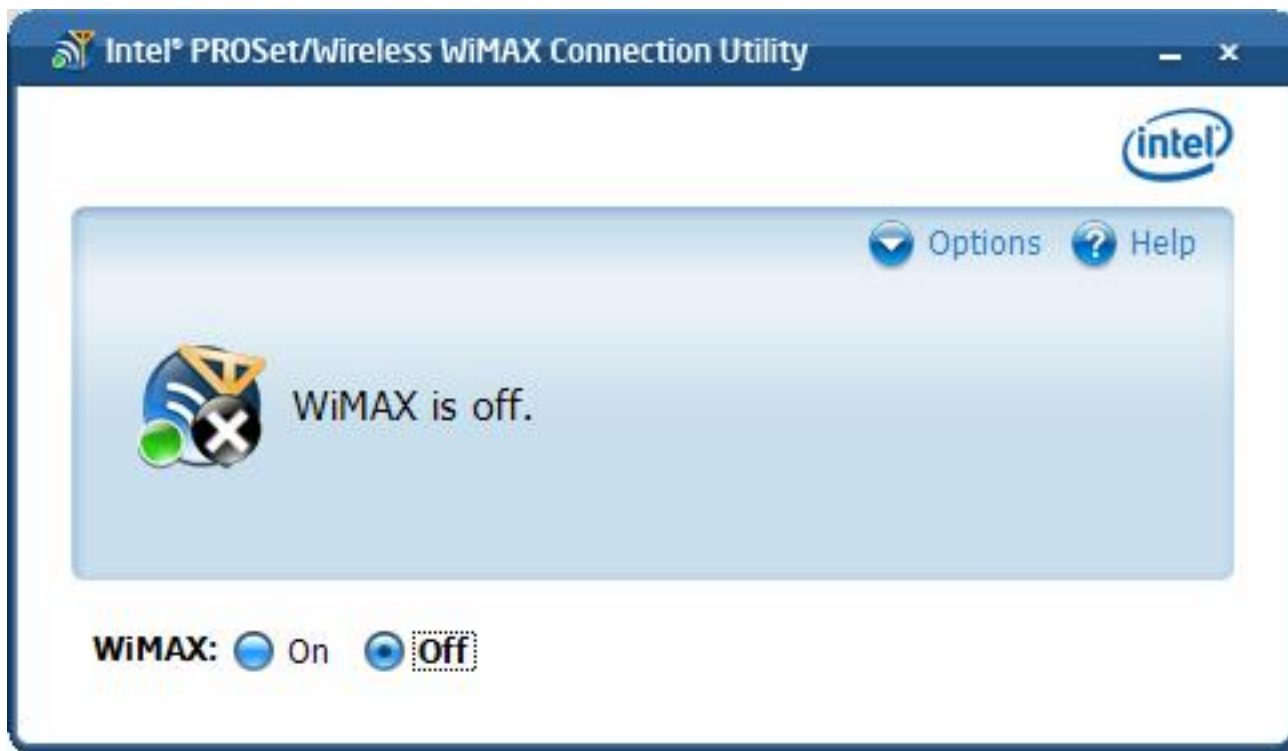
that you are not connected. To connect, double click on a network present in the **Networks available to connect** list. For complete help, see [Connecting to a WiMAX Network](#).

The hardware radio switch is off. To connect, turn on the hardware radio switch



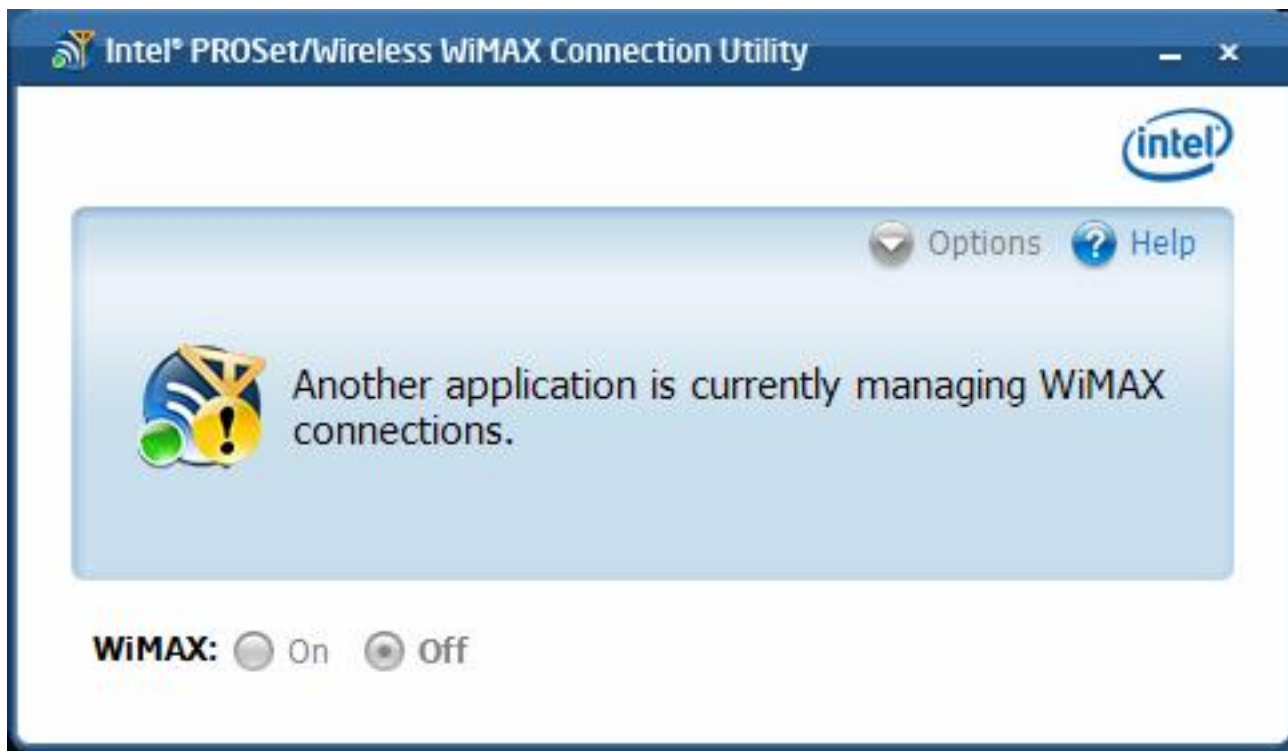
On some laptops, a WiMAX hardware radio switch lets you turn on or off WiMAX radio. If the hardware radio switch is off, then clicking the WiMAX On/Off button on this window will have no effect and network scanning and connection is not possible. First turn **On** the hardware radio switch, then click **On** the Radio On/Off button.

WiMAX is off



The software **WiMAX** button is set to **Off**. WiMAX connections and network searches are not possible when this switch is set to Off. On this window, click **On** to turn WiMAX on. (Also be sure that the hardware radio switch, if present, is set to On.) The Intel(R) PROSet/Wireless WiMAX Utility will then automatically perform a network search and list available networks in **Networks available to connect**. If Connection Mode is set to automatic, you will be connected to the last connected, activated network. See [Preferences](#).

Another application is currently managing WiMAX connections



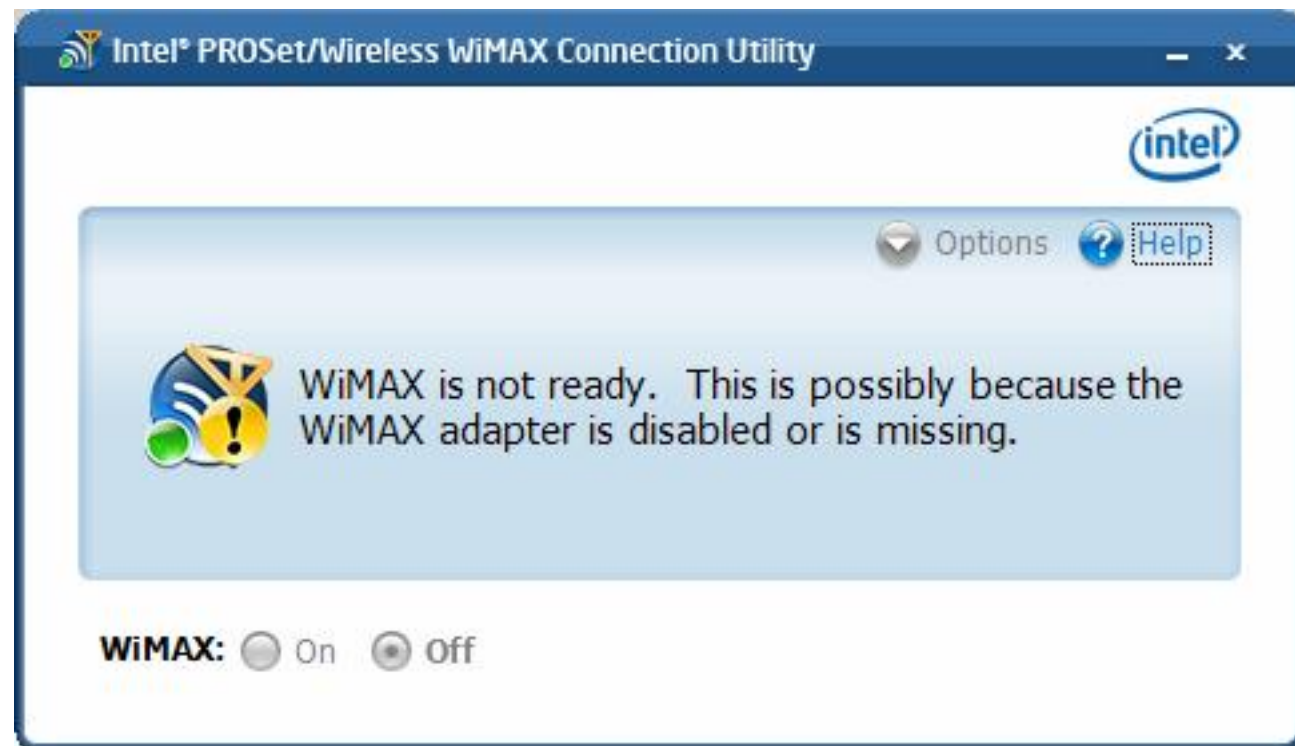
This message indicates that a WiMAX connection manager is managing WiMAX connections on your laptop. To let Intel(R) PROSet/Wireless WiMAX manage your WiMAX connections, you need to remove the other connection manager software from your laptop.

Unrecognized Operator



This message indicates that you have connected to a network that has not been activated. To be able to access the internet using this WiMAX network, you need to activate service with this WiMAX network service provider. Clicking on the subscription portal link will open an internet browser to this service provider's web site, to let you enter the necessary subscription information. After subscribing, the network will be activated. See [Activating a WiMAX Network](#).

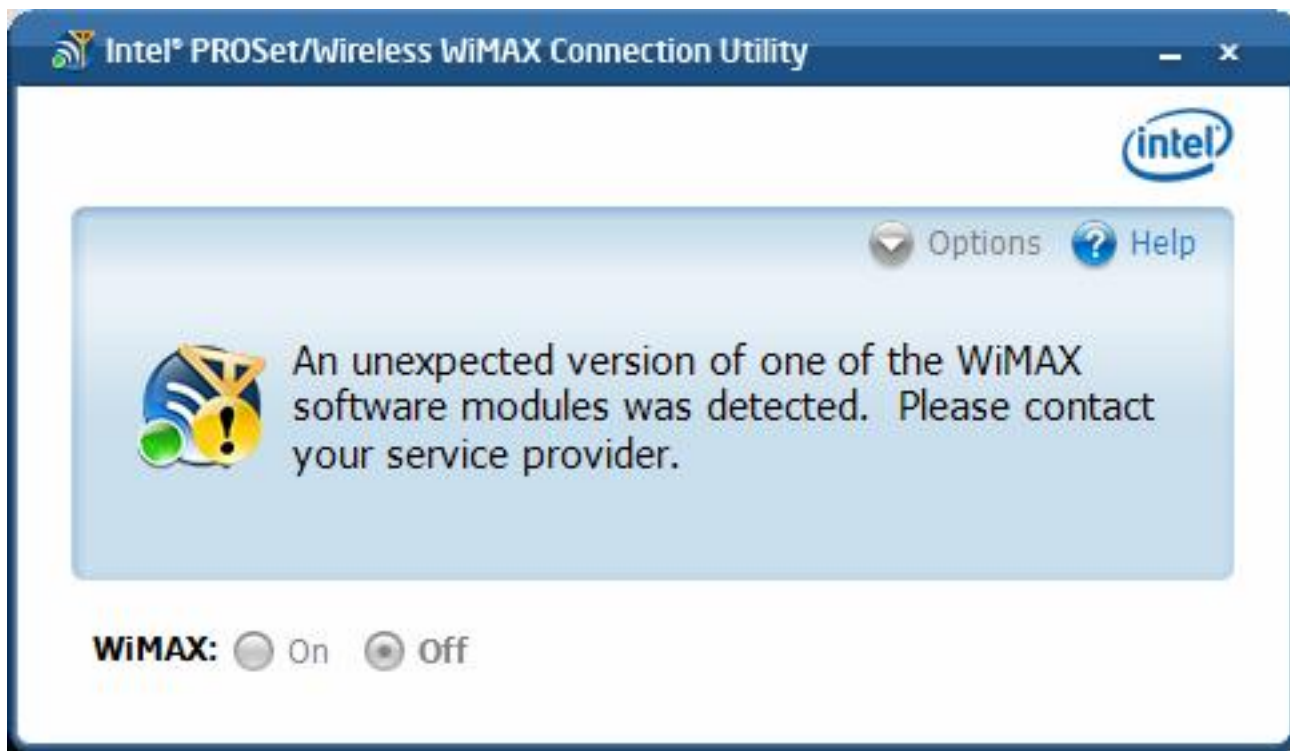
WiMAX is not ready...



WiMAX is not ready. Network connections and searches are not possible. This may be caused by one of the following reasons:

- The WiMAX adapter may be disabled via Windows XP* or Vista*. Enable using the Device Manager.
 - The WiMAX adapter is missing.
-

An unexpected version of one of the WiMAX software modules was detected



There is a problem with the WiMAX software. You need to contact your WiMAX service provider.

[Back to Top](#)

[Back to Contents](#)

[Trademarks and Disclaimers](#)

[Back to Contents](#)

Customer Support

Intel support is available online or by telephone. Available services include the most up-to-date product information, installation instructions about specific products, and troubleshooting tips.

Online Support

Technical Support: <http://support.intel.com>

Network Product Support: <http://www.intel.com/network>

Corporate Web Site: <http://www.intel.com>

[Back to Contents](#)

[Back to Contents](#)

Intel(R) PROSet/Wireless WiMAX Taskbar

- [Taskbar Icons](#)
 - [Taskbar Menu Commands](#)
 - [Tool Tips](#)
 - [Desktop Alerts](#)
 - [Start Intel\(R\) PROSet/Wireless WiMAX from the Taskbar](#)
-

Taskbar Icons

The Taskbar icons provide visual indication of the current WiMAX connection state. The taskbar status icon is located on the lower right corner of your Windows desktop.



Available: WiMAX networks are available for connection. This icon is only displayed if you are not connected to a WiMAX network and subscribed networks are available.



Connecting: When the adapter is connecting to a network, this icon changes to show an varying number of white arcs.



Searching. When the adapter is searching, the round magnifying glass moves around the icon.



Signal Strength. Shows the signal strength for this WiMAX connection.



WiMAX radio is turned off. You are not connected. The utility also cannot search for available networks.



No WiMAX networks are available. A search has been performed and no networks are available in the area. This includes both activated and un-activated networks.



Problem: A problem may exist with the adapter or software.

Taskbar Menu Commands

The Intel(R) PROSet/Wireless icon is located on the Taskbar located in the lower right corner of your Windows desktop. See [Taskbar Icons](#) to learn about the icons. Right-click the status icon to display the menu options.

Command	Description

Configure WiFi	Command present only if adapter supports WiFi connections. What does this do?
Configure WiMAX	Command present only if adapter supports WiMAX connections. What does this do?
Turn Wireless on/off	Command present only if adapter supports both WiFi and WiMAX connections. If so, from here you can turn on or off WiFi and WiMAX separately (or together if permitted by adapter).
WiFi on / WiFi off	Command present only if adapter supports only WiFi connections. Click to turn off or on the WiFi radio.
WiMAX on / WiMAX off	Command present only if adapter supports only WiMAX connections. Click to turn off or on the WiMAX radio.
Show Status	<p>Command present only if adapter supports both WiFi and WiMAX connections. Provides this options</p> <ul style="list-style-type: none"> ● WiFi status only: Only the WiFi status icons are displayed. ● WiMAX status only: Only the WiMAX status icons are displayed. ● Automatic: Displays WiMAX or WiFi icons, based on these priorities: <ul style="list-style-type: none"> ○ Currently connected ○ Last connected ○ Available networks ○ Radio on.
Connect WiFi	Command present only if your adapter supports WiFi connections. Lets you select from the available WiFi networks to connect to. (If radio is off, this menu is not available.)
Connect WiMAX	Command present only if your adapter supports WiMAX connections. Lets you select from the available WiMAX networks to connect to. If a search for networks is in progress, a message indicates so. (If the radio is off, this command is not available.)
Disconnect	Command present only if your adapter supports WiMAX connections. Disconnects from currently connected WiMAX network. However the connection continues if the adapter is operating in Automatic Connection mode. In this case a message appears indicating so and suggests that you turn the WiMAX radio off or change the Connection Settings .

Tool Tips

Tool tips provide information about the adapter, connection and availability of networks. Tool tips display when you pass the mouse pointer over the taskbar icon. Following are the all of the possible tool tips.

Tip	Explanation
<ABC WiMAX Network> is available to connect	One WiMAX network (in this example ABC WiMAX Network) is available for you to connect. This may be an activated or un-activated network. This message only displays if you are not currently connected.
N networks are available to connect.	Two or more WiMAX networks are available to connect. They may be an activated or un-activated networks. This message only displays if you are not currently connected.
Searching for networks...	The adapter is currently searching for available WiMAX networks.
Connecting to <ABC WiMAX Network>...	The adapter is currently connecting to the named network (in this example, ABC WiMAX Network).
Connected to <ABC WiMAX Network> Signal: <Excellent> IP address: <XXX.XXX.XXX.XXX>	The adapter is connected to the named network, (in this example, ABC WiMAX Network). This signal strength is shown. It may range from Poor to Excellent. The internet protocol address is listed for this adapter/connection.
WiMAX is off.	The WiMAX On / Off button (shown on the utility main window) is off.
The hardware radio switch is off.	Some laptops have a physical switch that you can use to turn on or off the WiMAX radio. The message indicates that the switch is off. To connect you need to turn it on.
No networks are available.	Indicates that no WiMAX networks, including activated and un-activated, are available to connect to.
An unexpected version of one of the WiMAX software modules was detected.	There is a problem with the WiMAX software. You need to contact your WiMAX service provider.
Another application is currently managing WiMAX connections.	This message indicates that a WiMAX connection manager is managing WiMAX connections on your laptop. To let Intel(R) PROSet/Wireless WiMAX manage your WiMAX connections, you need to remove the other connection manager software from your laptop.
The WiMAX adapter is disabled or missing.	This may be caused by one of the following reasons: <ul style="list-style-type: none"> • The WiMAX adapter may be disabled via Windows XP* or Vista*. Enable using the Device Manager. • The WiMAX adapter is missing.

Alerts

When user action is required, a desktop alert displays. If you click the alert, then an appropriate action is taken.

Content in development.

Open Intel(R) PROSet/Wireless WiMAX from Taskbar

To open Intel(R) PROSet/Wireless WiMAX:

- Double-click the Taskbar icon (Insert Image) located in the lower right corner of your Windows desktop, or
 - Right-click the Taskbar icon (Insert Image), and select **Open Intel(R) PROSet/Wireless WiMAX Connection Utility**.
-

[Back to Top](#)

[Back to Contents](#)

[Trademarks and Disclaimers](#)

[Back to Contents](#)

Updates from Your WiMAX Network Service Provider

Periodically, your network service provider may need to update your WiMAX connection settings or your WiMAX software. The Intel(R) PROSet/Wireless WiMAX utility will prompt with one of the following messages:

WiMAX updates are available. These updates are critical for normal operation of WiMAX. Download the updates now?

or

The network is attempting to update the WiMAX connection settings. These settings are critical for the proper operation of WiMAX. Update WiMAX connection settings now?

You should click **Yes** to both of these queries. If you click **Remind me later**, you may suffer a service degradation, and you will be prompted again.

[Back to Top](#)

[Back to Contents](#)

[Trademarks and Disclaimers](#)

[Back to Contents](#)

Warranty

Product Warranty Information

One-Year Limited Hardware Warranty

Limited Warranty

Intel warrants to the purchaser of the Intel® Wireless WiMAX/WiFi Link 5150 adapter, or the Intel® Wireless WiMAX/WiFi Link 5350 adapter (the “Product”), that the Product, if properly used and installed, will be free from defects in material and workmanship and will substantially conform to Intel’s publicly available specifications for the Product for a period of one (1) year beginning on the date the Product was purchased in its original sealed packaging.

SOFTWARE OF ANY KIND DELIVERED WITH OR AS PART OF THE PRODUCT IS EXPRESSLY PROVIDED "AS IS", SPECIFICALLY EXCLUDING ALL OTHER WARRANTIES, EXPRESS, IMPLIED (INCLUDING WITHOUT LIMITATION, WARRANTIES OF MERCHANTABILITY, NON-INFRINGEMENT OR FITNESS FOR A PARTICULAR PURPOSE), provided however, that Intel warrants that the media on which the software is furnished will be free from defects for a period of ninety (90) days from the date of delivery. If such a defect appears within the warranty period, you may return the defective media to Intel for replacement or alternative delivery of the software at Intel's discretion and without charge. Intel does not warrant or assume responsibility for the accuracy or completeness of any information, text, graphics, links or other items contained within the software.

If the Product which is the subject of this Limited Warranty fails during the warranty period for reasons covered by this Limited Warranty, Intel, at its option, will:

- **REPAIR** the Product by means of hardware and/or software; OR
- **REPLACE** the Product with another product, OR, if Intel is unable to repair or replace the Product,
- **REFUND** the then-current Intel price for the Product at the time a claim for warranty service is made to Intel under this Limited Warranty.

THIS LIMITED WARRANTY, AND ANY IMPLIED WARRANTIES THAT MAY EXIST UNDER APPLICABLE STATE, NATIONAL, PROVINCIAL OR LOCAL LAW, APPLY ONLY TO YOU AS THE ORIGINAL PURCHASER OF THE PRODUCT.

Extent of Limited Warranty

Intel does not warrant that the Product, whether purchased stand-alone or integrated with other products, including without limitation, semi-conductor components, will be free from design defects or errors known as "errata." Current characterized errata are available upon request. Further, this Limited Warranty does NOT cover: (i) any costs associated with the replacement or repair of the Product, including labor, installation or other costs incurred by you, and in particular, any costs relating to the removal or replacement of any Product soldered or otherwise permanently affixed to any printed circuit board or integrated with other products; (ii) damage to the Product due to external causes, including accident, problems with electrical power, abnormal, mechanical or environmental conditions, usage not in accordance with product instructions, misuse, neglect, accident, abuse, alteration, repair, improper or unauthorized installation or improper testing, or (iii) any Product which has been modified or operated outside of Intel's publicly available specifications or where the original product identification markings (trademark or serial number) have been removed, altered or obliterated from the Product; or (iv) issues resulting from modification (other than by Intel) of software products provided or included in the Product, (v) incorporation of software products, other than those software products provided or included in the Product by Intel, or (vi) failure to apply Intel-supplied modifications or corrections to any software provided with or included in the Product.

How to Obtain Warranty Service

To obtain warranty service for the Product, you may contact your original place of purchase in accordance with its instructions or you may contact Intel. To request warranty service from Intel, you must contact the Intel Customer Support ("ICS") center in your region (www.intel.com/support/) within the warranty period during normal business hours (local time), excluding holidays and return the Product to the designated ICS center. Please be prepared to provide: (1) your name, mailing address, email address, telephone numbers and, in the USA, valid credit card information; (2) proof of purchase; (3) model name and product identification number found on the Product; and (4) an explanation of the problem. The Customer Service Representative may need additional information from you depending on the nature of the problem. Upon ICS's verification that the Product is eligible for warranty service, you will be issued a Return Material Authorization ("RMA") number and provided with instructions for returning the Product to the designated ICS center. When you return the Product to the ICS center, you must include the RMA number on the outside of the package. Intel will not accept any returned Product without an RMA number, or that has an invalid RMA number, on the package. You must deliver the returned Product to the designated ICS center in the original or equivalent packaging, with shipping charges pre-paid (within the USA), and assume the risk of damage or loss during shipment. Intel may elect to repair or replace the Product with either a new or reconditioned Product or components, as Intel deems appropriate. The repaired or replaced product will be shipped to you at the expense of Intel within

a reasonable period of time after receipt of the returned Product by ICS. The returned Product shall become Intel's property on receipt by ICS. The replacement product is warranted under this written warranty and is subject to the same limitations of liability and exclusions for ninety (90) days or the remainder of the original warranty period, whichever is longer. If Intel replaces the Product, the Limited Warranty period for the replacement Product is not extended.

WARRANTY LIMITATIONS AND EXCLUSIONS

THIS WARRANTY REPLACES ALL OTHER WARRANTIES FOR THE PRODUCT AND INTEL DISCLAIMS ALL OTHER WARRANTIES, EXPRESS OR IMPLIED INCLUDING, WITHOUT LIMITATION, THE IMPLIED WARRANTIES OF MERCHANTABILITY, FITNESS FOR A PARTICULAR PURPOSE, NON-INFRINGEMENT, COURSE OF DEALING AND USAGE OF TRADE. **Some states (or jurisdictions) do not allow the exclusion of implied warranties so this limitation may not apply to you.** ALL EXPRESS AND IMPLIED WARRANTIES ARE LIMITED IN DURATION TO THE LIMITED WARRANTY PERIOD. .NO WARRANTIES APPLY AFTER THAT PERIOD. **Some states (or jurisdictions) do not allow limitations on how long an implied warranty lasts, so this limitation may not apply to you.**

LIMITATIONS OF LIABILITY

INTEL'S RESPONSIBILITY UNDER THIS OR ANY OTHER WARRANTY, IMPLIED OR EXPRESS, IS LIMITED TO REPAIR, REPLACEMENT OR REFUND, AS SET FORTH ABOVE. THESE REMEDIES ARE THE SOLE AND EXCLUSIVE REMEDIES FOR ANY BREACH OF WARRANTY. TO THE MAXIMUM EXTENT PERMITTED BY LAW, INTEL IS NOT RESPONSIBLE FOR ANY DIRECT, SPECIAL, INCIDENTAL, OR CONSEQUENTIAL DAMAGES RESULTING FROM ANY BREACH OF WARRANTY OR UNDER ANY OTHER LEGAL THEORY (INCLUDING WITHOUT LIMITATION, LOST PROFITS, DOWNTIME, LOSS OF GOODWILL, DAMAGE TO OR REPLACEMENT OF EQUIPMENT AND PROPERTY, AND ANY COSTS OF RECOVERING, REPROGRAMMING, OR REPRODUCING ANY PROGRAM OR DATA STORED IN OR USED WITH A SYSTEM CONTAINING THE PRODUCT), EVEN IF INTEL HAS BEEN ADVISED OF THE POSSIBILITY OF SUCH DAMAGES. **Some states (or jurisdictions) do not allow the exclusion or limitation of incidental or consequential damages, so the above limitations or exclusions may not apply to you.** THIS LIMITED WARRANTY GIVES YOU SPECIFIC LEGAL RIGHTS, AND YOU MAY ALSO HAVE OTHER RIGHTS THAT VARY BY STATE OR JURISDICTION. ANY AND ALL DISPUTES ARISING UNDER OR RELATED TO THIS LIMITED WARRANTY SHALL BE ADJUDICATED IN THE FOLLOWING FORUMS AND GOVERNED BY THE FOLLOWING LAWS: FOR THE UNITED STATES OF AMERICA, CANADA, NORTH AMERICA AND SOUTH AMERICA, THE FORUM SHALL BE SANTA CLARA, CALIFORNIA, USA AND THE APPLICABLE LAW SHALL BE THAT OF THE STATE OF DELAWARE. FOR THE ASIA PACIFIC REGION (EXCEPT FOR MAINLAND CHINA), THE FORUM SHALL BE SINGAPORE AND THE APPLICABLE LAW SHALL BE THAT OF SINGAPORE. FOR EUROPE AND THE REST OF THE WORLD, THE FORUM SHALL BE LONDON AND THE APPLICABLE LAW SHALL BE THAT OF ENGLAND AND WALES IN THE

EVENT OF ANY CONFLICT BETWEEN THE ENGLISH LANGUAGE VERSION AND ANY OTHER TRANSLATED VERSION(S) OF THIS LIMITED WARRANTY (WITH THE EXCEPTION OF THE SIMPLIFIED CHINESE VERSION), THE ENGLISH LANGUAGE VERSION SHALL CONTROL.

IMPORTANT! UNLESS OTHERWISE AGREED IN WRITING BY INTEL, THE INTEL PRODUCTS SOLD HEREUNDER ARE NOT DESIGNED, OR INTENDED FOR USE IN ANY MEDICAL, LIFE SAVING OR LIFE SUSTAINING SYSTEMS, TRANSPORTATION SYSTEMS, NUCLEAR SYSTEMS, OR FOR ANY OTHER MISSION CRITICAL APPLICATION IN WHICH THE FAILURE OF THE INTEL PRODUCT COULD CREATE A SITUATION WHERE PERSONAL INJURY OR DEATH MAY OCCUR.

[Back to Top](#)

[Back to Contents](#)


[Trademarks and Disclaimers](#)

[Back to Contents](#)

First Time Connection - Activating Service with a WiMAX Network

Before you can enjoy the benefits of WiMAX, you need to *activate* a WiMAX network. Activating a WiMAX network means that you are registering your laptop computer with the WiMAX network service provider. During this process, you will be directed to a website for that provider, where you will open an account or update an existing account. Activation is quick and easy.

How to Activate a WiMAX Network

1. On the main window, under **Networks available to connect**, find a network. Available, un-activated networks have this icon: .
2. Double click the network, or click once and then click **Connect**.
3. The Intel(R) PROSet/Wireless WiMAX utility launches a web browser to the subscription website for the selected WiMAX network service provider. At this website, you will be asked to enter subscription information.
4. After you have entered the required information, you will see *one or more messages* asking permission to update your WiMAX connections settings or WiMAX software. Following are *examples* of these messages. The order presented may be different. Click **Yes** or **OK** to each of these requests. (If you click **Remind me later**, activation and access to this network will be postponed.)
 - *The network is attempting to update the WiMAX connection settings. These settings are critical for the proper operation of WiMAX. Update WiMAX connection settings now? Click **Yes**.*
 - *WiMAX updates are available. These updates are critical for normal operation of WiMAX. Download the updates now? Click **Yes**.*
 - *The WiMAX updates have been downloaded. Installation will now begin. Click **OK**.*
 - *The WiMAX updates have been downloaded. These updates are critical for normal operation of WiMAX. Install the updates now? Click **Yes**.*
5. While these updates are being performed, progress messages will be shown in the [Connection Status](#) area. Following are *examples* of these messages. The order presented may be different. These are information messages only and no additional action is required.

- *Network activation is in progress. The adapter's WiMAX settings are being updated...*
 - *Network activation is in progress. The WiMAX updates are being installed...*
6. When the activation is complete, the message *Network ABC has been successfully activated* will be displayed.



Your newly activated WiMAX network is now a *home* network, as indicated by the following icon: . You should now be connected to this network and can use it to access the internet. To disconnect from this WiMAX network, click **Disconnect**.

If network activation fails, the message *Network activation has failed* is received. If you receive this message, contact your WiMAX network service provider.

You can connect to your new home network manually or automatically. See [Connection Preferences](#).

[Back to Top](#)

[Back to Contents](#)

[Trademarks and Disclaimers](#)

[Back to Contents](#)

Advanced

The Advanced window presents the following two tabs:

- [Adapter](#)
 - [Profiles](#)
 - [Troubleshooting](#)
-

Adapter

This tab lets you reset the WiMAX adapter. You should only do this if the WiMAX adapter seems to be not working. All adapter activities will be stopped, your WiMAX connection will be closed, and any search will be halted. Resetting takes from 5 to 10 seconds. This operation is similar to disabling and then enabling the adapter using the Device Manager. After resetting is complete, the WiMAX adapter should be ready.



Profiles

Each activated network has a profile that lets the adapter connect with that network. The profile contains WiMAX connection settings that are maintained by the WiMAX network service provider. This tab lets you remove a profile.

NOTE: If you remove a profile, you will no longer be able to connect to that network without going through the activation process again.

NOTE: Removing a profile will not terminate your subscription agreement with that WiMAX network service provider. To change your subscription agreement, you need to contact that WiMAX network service provider.

To remove a profile, first disconnect from the named network. Then select it here and click **Remove profile**.



Troubleshooting

NOTE: The Troubleshooting tab should not be used unless you are directed to do so by your WiMAX network service provider. Changing your WiMAX connection settings may force you to reactive your home network.

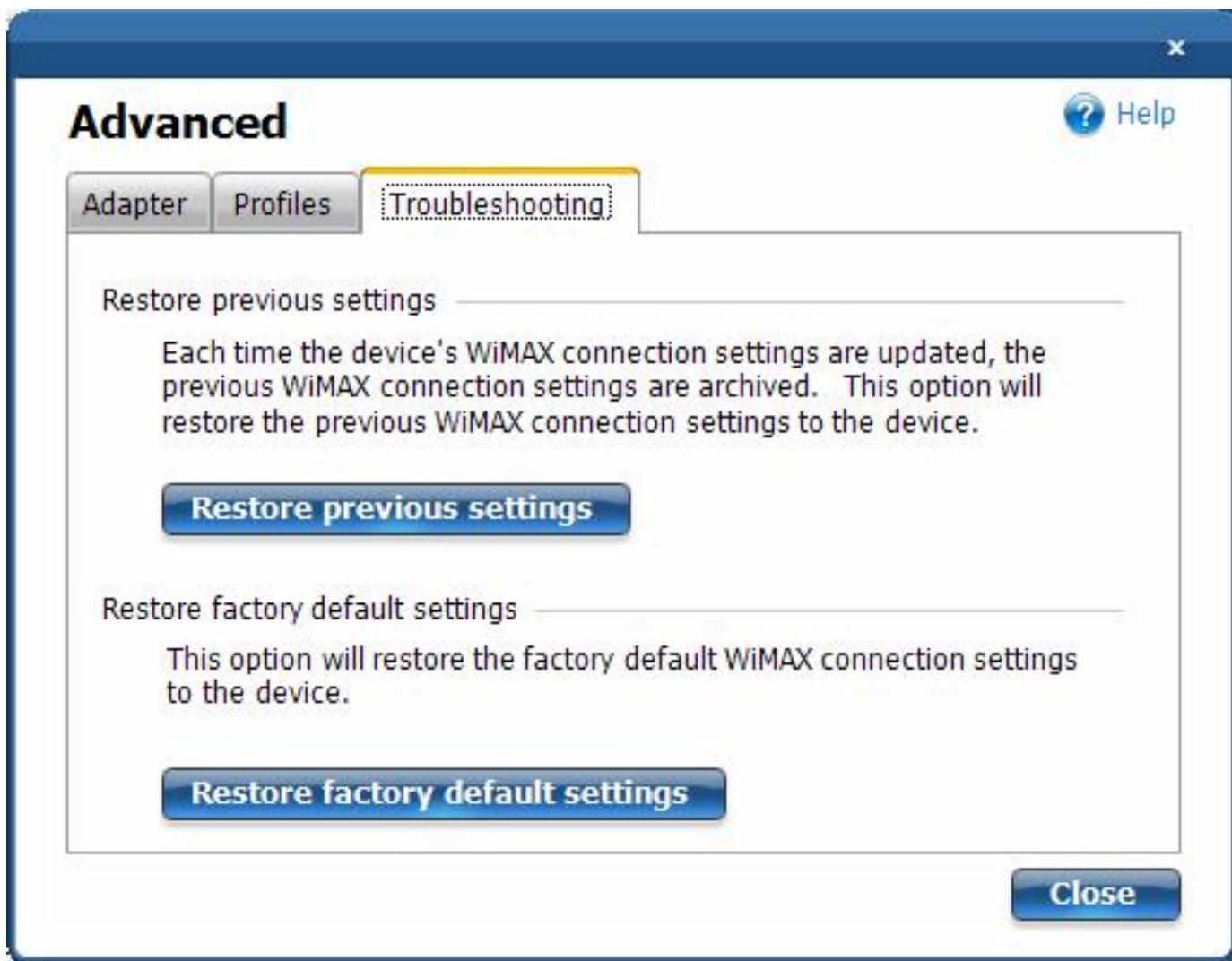
NOTE: Changing your WiMAX connection settings will not terminate your subscription agreement with that WiMAX network service provider. To change your subscription agreement, you need to contact that WiMAX network service provider.

The WiMAX connection settings are periodically updated by your WiMAX network service provider. Three sets of WiMAX connection settings are maintained: current settings, previous settings, and factory default settings. This tab lets you:

- **Restore previous settings:** This will cause the adapter to revert to the previous set of

connection settings.

- **Reset factory default settings:** This will cause the adapter to revert to the factory default connection settings and will force you to reactive your home network.



[Back to Top](#)

[Back to Contents](#)

[Trademarks and Disclaimers](#)

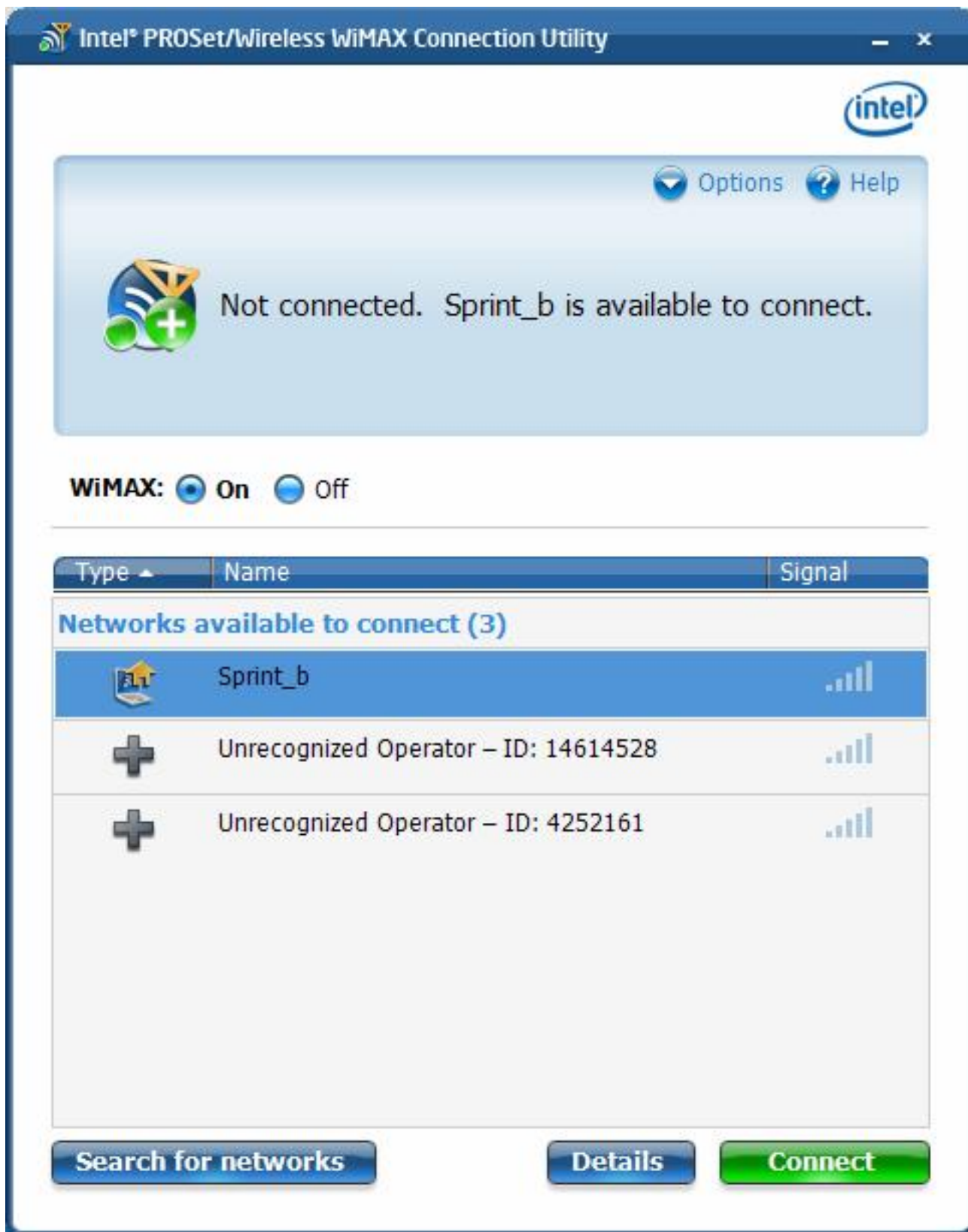
[Back to Contents](#)

Connect to a WiMAX Network

- [First Time Connection to a WiMAX Network](#)
 - [Connect to an Activated WiMAX Network](#)
 - [Automatic and Manual Connection](#)
 - [Disconnect from a WiMAX Network](#)
 - [Unsubscribing from a Network Service Provider](#)
-

Connect to an Activated WiMAX Network

An activated WiMAX network is a home network: a network with a service provider with which you have already established service. To connect to it, simply double click on the network in the **Networks available to connect** list. Or select it and click **Connect**.



Automatic and Manual Connection

The Intel(R) PROSet/Wireless WiMAX utility is set by default for manual connection. This means that

to connect to a WiMAX network, you must select it in the **Networks available to connect** list and click **Connect** (or double-click on the network). Otherwise, you will not be connected.

You can configure the utility to perform *automatic* connection to the most recent home network that you were connected to. This means that whenever you turn on the laptop, the utility will connect to that network (unless you are of range). To turn on automatic connection, see [Connection Preferences](#).

Disconnect from a WiMAX Network

To disconnect from a WiMAX network, on the main window, click **Disconnect**.

Unsubscribing from a WiMAX Network Service Provider

To unsubscribe from a WiMAX service provider, you need to contact the service provider. You cannot unsubscribe using the Intel(R) PROSet/Wireless WiMAX Utility.

[Back to Top](#)

[Back to Contents](#)

[Trademarks and Disclaimers](#)