

More HP resources

Resource	Location
HP support <ul style="list-style-type: none">• Online chat with an HP technician (select countries).• Find telephone numbers.• Locate HP service center locations.	Go to http://www.hp.com/support .
Product Notices, Warranty, and User Guide <ul style="list-style-type: none">• Safety and regulatory information• HP Limited Warranty applicable to your tablet• Product documentation	To access the user guides, select the HP Support Assistant app on the Start screen, select My computer , and then select User guides .
Serial number, product number, model number, and IMEI number (select models only)	On the back of the tablet, or from the HP Support Assistant app.

Product description

This product is a lightweight tablet and features a thin-panel display, processor, RAM, integrated battery pack, and an external AC adapter. This printed *Quick Start* guide identifies the hardware components of your tablet. The AC adapter has a rating of 100-240 V ac, 50/60 Hz, 0.3-1.0 A. You can access the latest user guide from the **HP Support Assistant** app.

Specification

The tablet operates on DC power, which can be supplied by an AC or a DC power source. The AC power source must be rated at 100-240 V, 50/60 Hz.

NOTE: The HP adapter included with your tablet is recommended for charging the tablet.

Temperature Operating: Metric, 0°C to 35°C; U.S., 32°F to 95°F

Relative humidity (noncondensing) Operating: 10% to 90%

Regulatory information

For regulatory identification purposes, your product is assigned a Regulatory Model Number (RMN), HSTNN-Q93C. The RMN should not be confused with the marketing name (if any, etc.) or product numbers (HP P/N, etc.).


If required, regulatory markings for your country or region are located on the back of the unit, under the removable battery (if equipped), on the packaging, or elsewhere in this document. For more safety and regulatory information, refer to the *Product Notices* included with your tablet, accessible via the **HP Support Assistant** app.

Product notices

Some notices may not apply to your product. One or more integrated wireless devices are installed in this device. In some environments, the use of wireless devices may be restricted. Such restrictions may apply aboard airplanes, in hospitals, near explosives, in hazardous locations, and so on. If you are uncertain of the policy that applies to the use of this product, ask for authorization to use it before you turn it on.

Limited Warranty

You can find your HP Limited Warranty located with the user guides on your product and/or on the CD or DVD provided in the box. In some countries or regions, HP may provide a printed warranty in the box. For countries or regions where the warranty is not provided in printed format, you can request a copy from <http://www.hp.com/go/orderdocuments>. For products purchased in Asia Pacific, you can write to HP at Hewlett Packard, POD, P.O. Box 200, Alexandra Post Office, Singapore 911507. Include your product name, and your name, phone number, and postal address.

- WARNING:** To reduce the risk of electric shock or damage to the equipment, plug the AC adapter into an AC outlet that is easily accessible at all times.
 - WARNING:** To reduce potential safety issues, only the AC adapter provided with the product, a replacement AC adapter provided by HP, or an AC adapter purchased as an accessory from HP should be used with the product.
 - WARNING:** To reduce the possibility of heat-related injuries or of overheating the tablet, do not place the tablet directly on your lap. Do not allow a soft surface, such as pillows or rugs or clothing, to block airflow. Also, do not allow the AC adapter to contact the skin or a soft surface, such as pillows or rugs or clothing, during operation. The tablet and the AC adapter comply with the user-accessible surface temperature limits defined by the International Standard for Safety of Information Technology Equipment (IEC 60950-1).
 - WARNING:** To reduce the risk of fire or burns, do not disassemble, crush, or puncture; do not short external contacts; do not dispose of in fire or water.
 - WARNING:**  To prevent possible hearing damage, do not listen at high volume levels for long periods.
- IMPORTANT:** The battery(ies) in this product cannot be easily replaced by users themselves. Removing or replacing the battery could affect your warranty coverage. If a battery is no longer holding a charge, contact support. When a battery has reached the end of its useful life, do not dispose of the battery in general household waste. Follow the local laws and regulations in your area for battery disposal.

© Copyright 2015 Hewlett-Packard Development Company, L.P. SD Logo is a trademark of its proprietor. Microsoft and Windows are U.S. registered trademarks of the Microsoft group of companies. The information contained herein is subject to change without notice. The only warranties for HP products and services are set forth in the express warranty statements accompanying such products and services. Nothing herein should be construed as constituting an additional warranty. HP shall not be liable for technical and editorial errors or omissions contained herein.

First Edition: July 2015



Printed in China Impreso en China 中国印刷
Imprimé en Chine Impresso na 중국에서 인쇄
Stampato in Cina China

798826-001

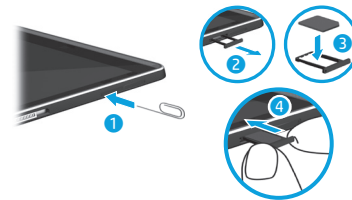
Quick Start


Setting up your tablet

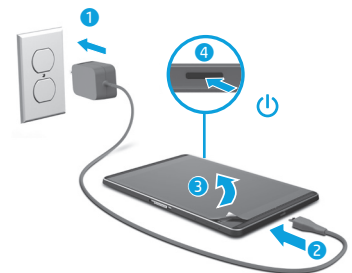


- 1 If you purchased a nano SIM card for your Internet data plan, install the SIM card in the SIM card slot.*

*Select models only




- 2 After charging the battery, press the power button  for at least 2 seconds to turn on the tablet.



- 3 Follow the on-screen instructions to select a language, a wireless network, and a Microsoft® account.

NOTE: If you do not have a Microsoft account, you can create one now.

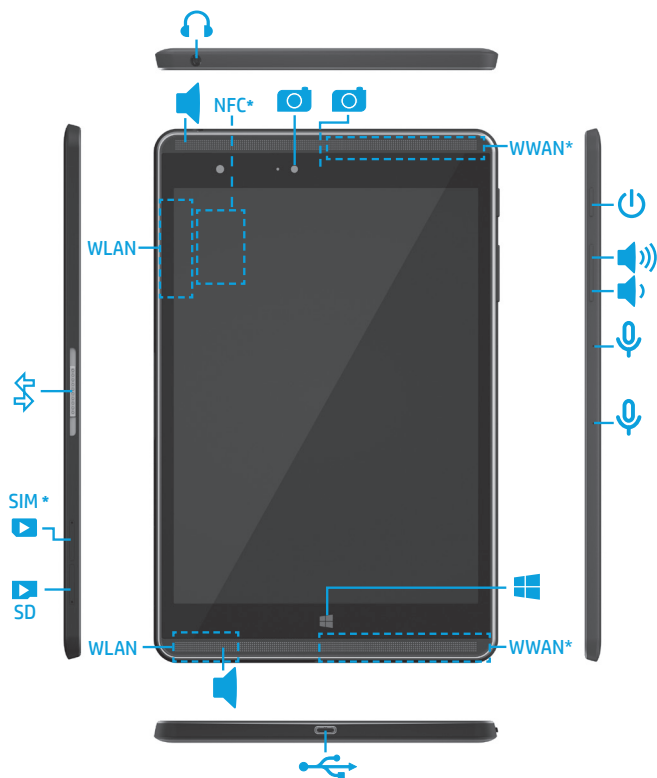
Turning off the tablet

1. Swipe from the right edge of the tablet to reveal the charms.
2. Tap **Settings**, and then tap the **Power** icon .
3. Tap **Shut down**.

NOTE: If your tablet becomes unresponsive, press and hold the power button  until the tablet turns off.

Getting to know your tablet

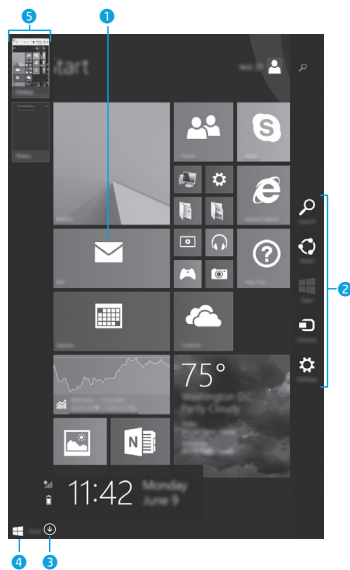
Features may vary by model and country.



*Select models only.


Navigating the Windows Start screen

The Windows® Start screen provides a central location where you can access your information and email, browse the Web, stream videos, view photos, and access social media websites. In addition, you can view the date, time, battery level, and wireless icon by swiping from the right edge of the touch screen.



NOTE: The appearance of the Start screen may vary.

Returning to the Start screen

Press the **Windows** button  on the tablet.

1 Opening an app



Tap a Start screen app. To quickly return to the Start screen, press the **Windows** button  on the tablet.

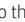
2 Displaying the charms (Search, Share, Start, Devices, and Settings)



Swipe from the right edge of the touch screen.

3 Finding a list of all apps on your tablet



From the Start screen, swipe to the left until the arrow  appears in the lower-left corner of the Start screen, and then tap the arrow.

4 Displaying the Start menu



Tap the **Desktop** app, and then press and release the **Start** button  in the lower-left corner of the touchscreen.

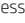
5 Switching between open apps



Swipe in and out from the left edge of the touch screen to reveal a list of open apps, and then tap an open app.

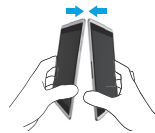
Finding more information

To learn about Windows, select the **Getting Started with Windows 8**  app* on the Start screen.

To access Help and Support from the Start screen, tap , type `help`, and then from the Search window, select **Help and Support**.

*Select models only

Touching to share files*



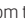
Tap the Near Field Communications (NFC) tapping area on the back of your tablet to the NFC tapping area of another NFC-enabled device. For more information on NFC, refer to Help and Support.

*Select models only

Backing up your data

HP strongly encourages you to periodically back up your personal data and media on your tablet to another computer, a dedicated storage device, or to the cloud using one of several commercially available solutions. For more information, you can access the user guide from the **HP Support Assistant** app.

Searching for an app, setting, or file

1. From the Start screen, tap , and then begin typing the name of an app, setting, or file.
2. Select the app, setting, or file from the list that is displayed on the screen.

Using the pen*

You can use the pen directly on the tablet. For details about using the pen, refer to the instructions included with the pen.

*Select models only



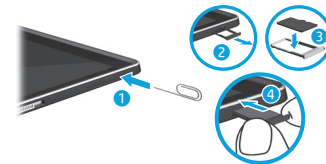
Changing your tablet's view

The Auto-rotate feature allows you to change your tablet's view. For landscape view, hold the tablet horizontally. For portrait view, hold the tablet vertically.

NOTE: Some apps do not rotate automatically.

Using a microSD card

Insert a microSD card (purchased separately) in the microSD slot.



NOTE: Your tablet has read/write support for SDXC microSD cards up to 2 TB.