



Pendant

IPLP Item No. 2018

Operation Manual

Wireless Devices Inc. (Taiwan)

The Port item #2018 able transmitter is designed to directly page the nurses or health care persons with a single “*Bell* button” depressing. No need to dial telephone to get the helps. And the installation is simple without any wires connections. Also, the operation is easy to access the quick emergency aids. Calling Nurse for helps? You can simply just by pressing the “*Bell*” button.



Specifications

Mode No.	2018
Paging format:	POCSAG
Frequency::	430~470MHz. 1 Channel Crystal controller.
Baud rate:	512bps / 1200bps / 2400bps.
Message:	Numeric and Alphanumeric (Max 40 Character).
Message data:	Numeric or Alphanumeric.
RF output	<4 mW (+6.0 db).
Modulation:	FSK ,NRZ.
Deviation:	4.5Khz.
Stability:	±10 ppm.
Pager Capacity:	1 Button
Battery:	Type 23A 9V Alkaline battery.
Battery life	about 240 days (3 Time per day).
Programming I/O:	via USB with P/C.
Size:	80mm X 42mm X 18mm.
Housing Color:	White (other desired colors in minimum 500PCs per order).
Model Weight:	34gs (with battery).

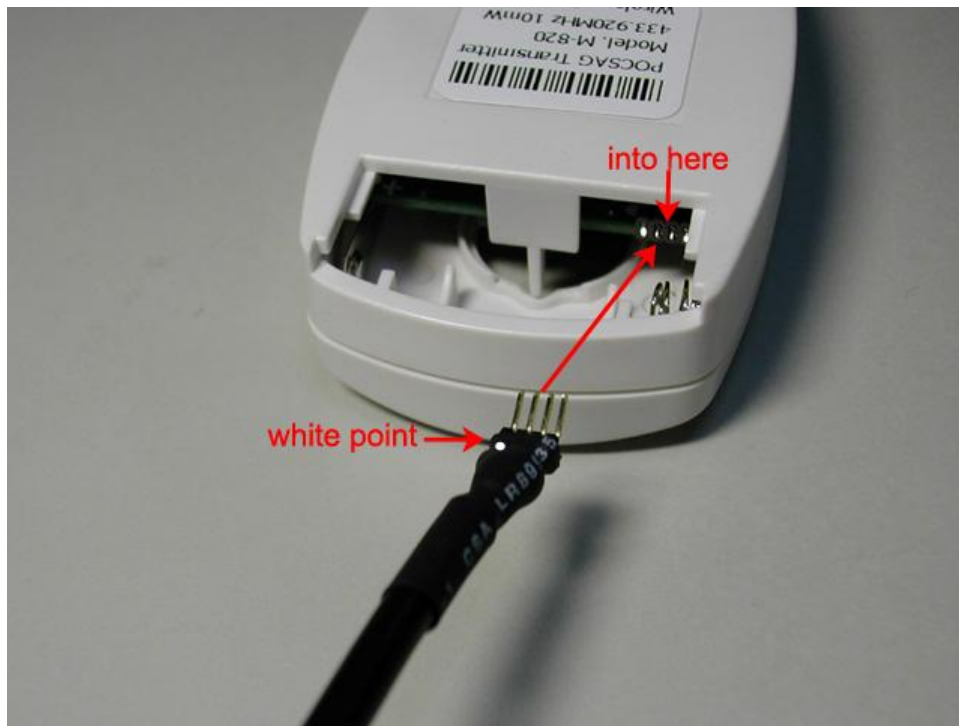
A. How to program the Item #2108



1). Open the Item #2018 battery cover and take out battery



2). Insert the USB programming cable into the item #2018 set



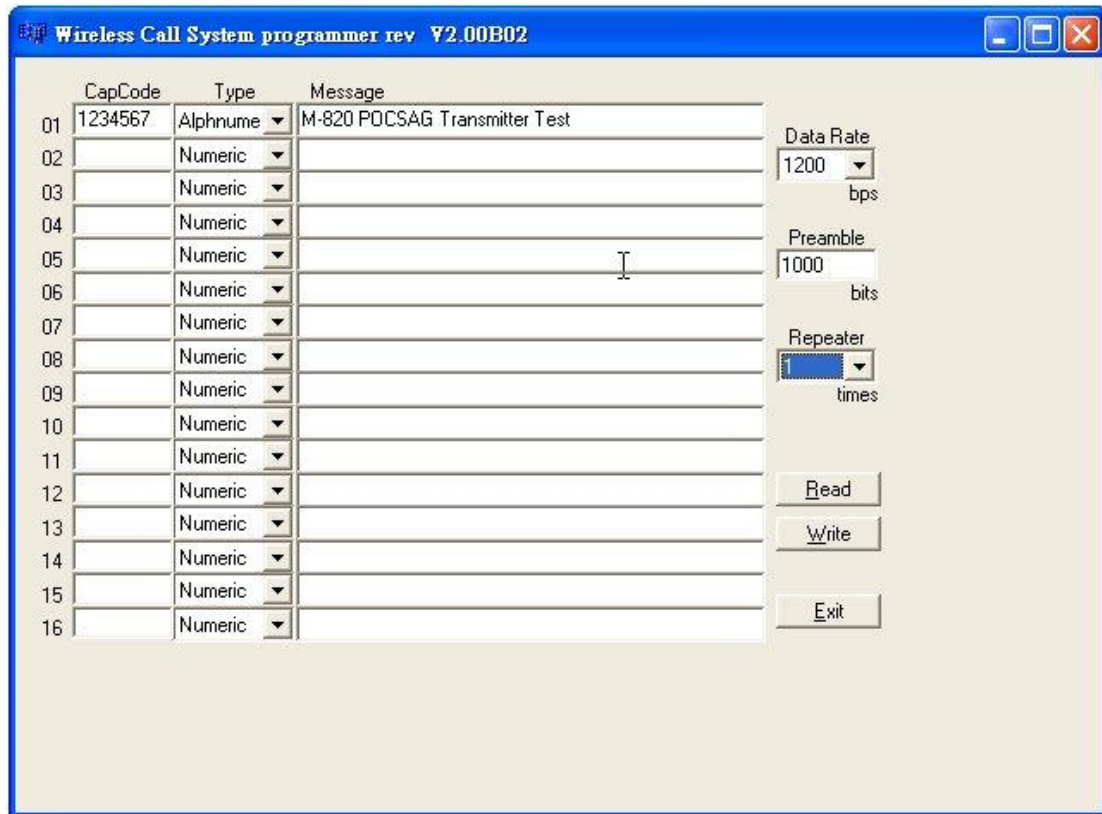
3). Connected USB cable to P/C or N/B computer

4). Install the programming CD software on your P/C or N/B computer

5). Click **[WCP2.00]** icon to run the **Item #2108** programming AP



WCP2.00B02



a. **Pager No.:** Reference Key number of the total 16 message inputs

01 for Bell button message out contents,

02 for magnet switch 2 (*option part no. 820-02),

03 for magnet switch 3 (*option part no. 820-03)

04~16 for other item usages.

b. **Capcode :** This is for 7 digits address use. And it must be same as the used receiving pager.

c. **Type : Numeric or Alphanumeric**

Please set the same message type with your used numeric or alphanumeric pager.

d. **Message**

This is for the pre-programmed messages to be send out to receiving pagers.

e. **Date rate**

This should also be set on the same speed rate with the used pagers.

And the baud rate is in POCsAG 512bps or 1200bps or 2400bps type only.

f. **Preamble**

Please set this function at the 1000 bits above. And it might not work properly if under the 576 bits.

g. **Repeater**

This is for the same 1-4 times repeat message set-up with a single Red button depressing.

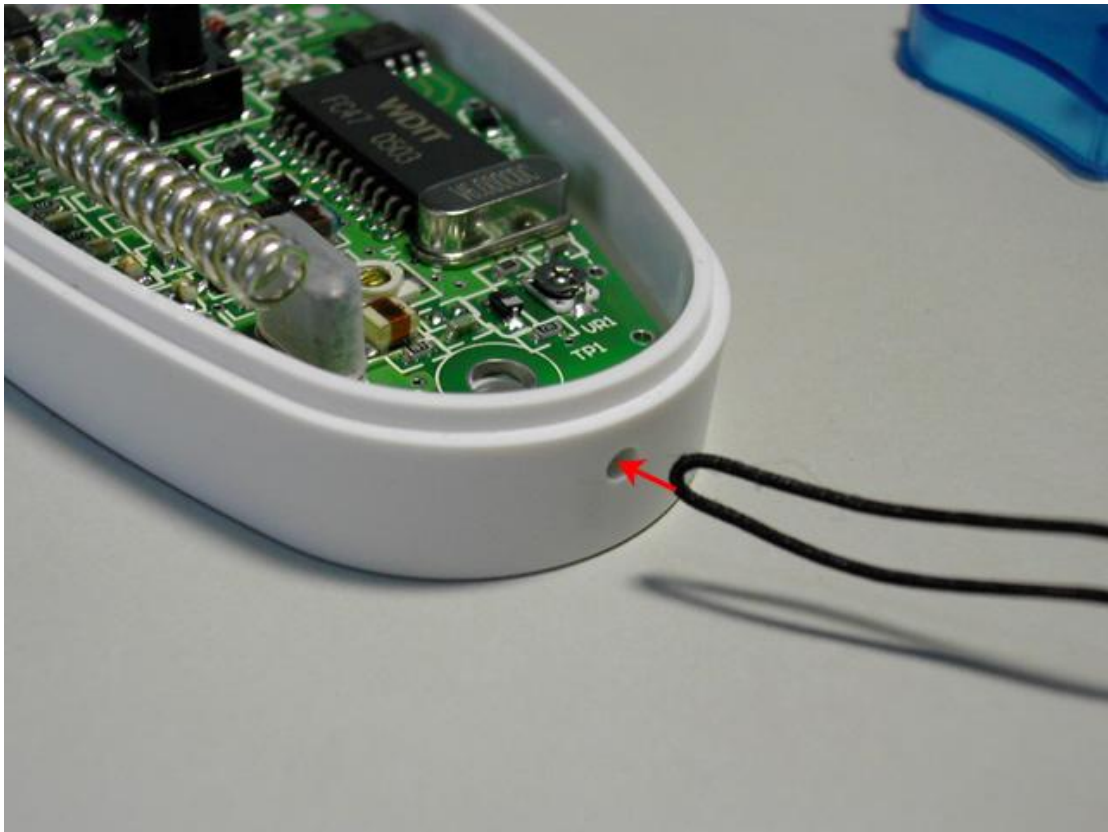
h. **Read**

Reading the programmed data from your item #2018

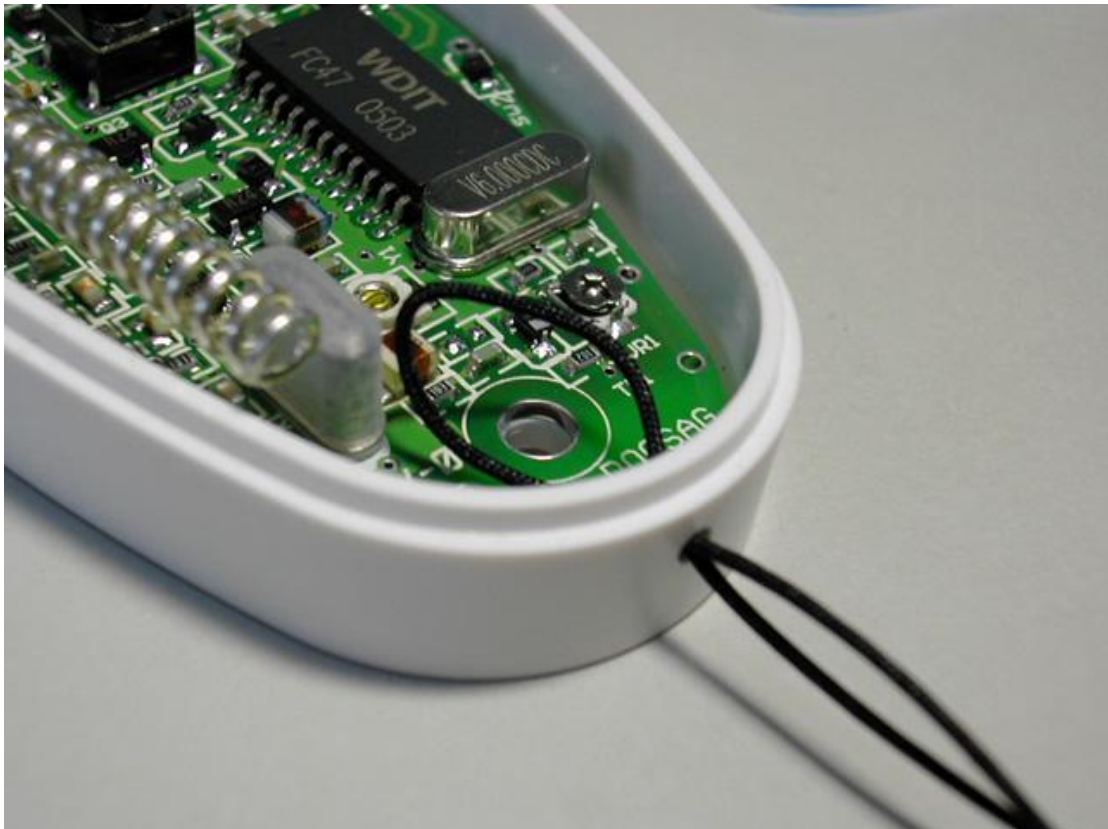
i. **Write**

Writing the programming data to your item #2018

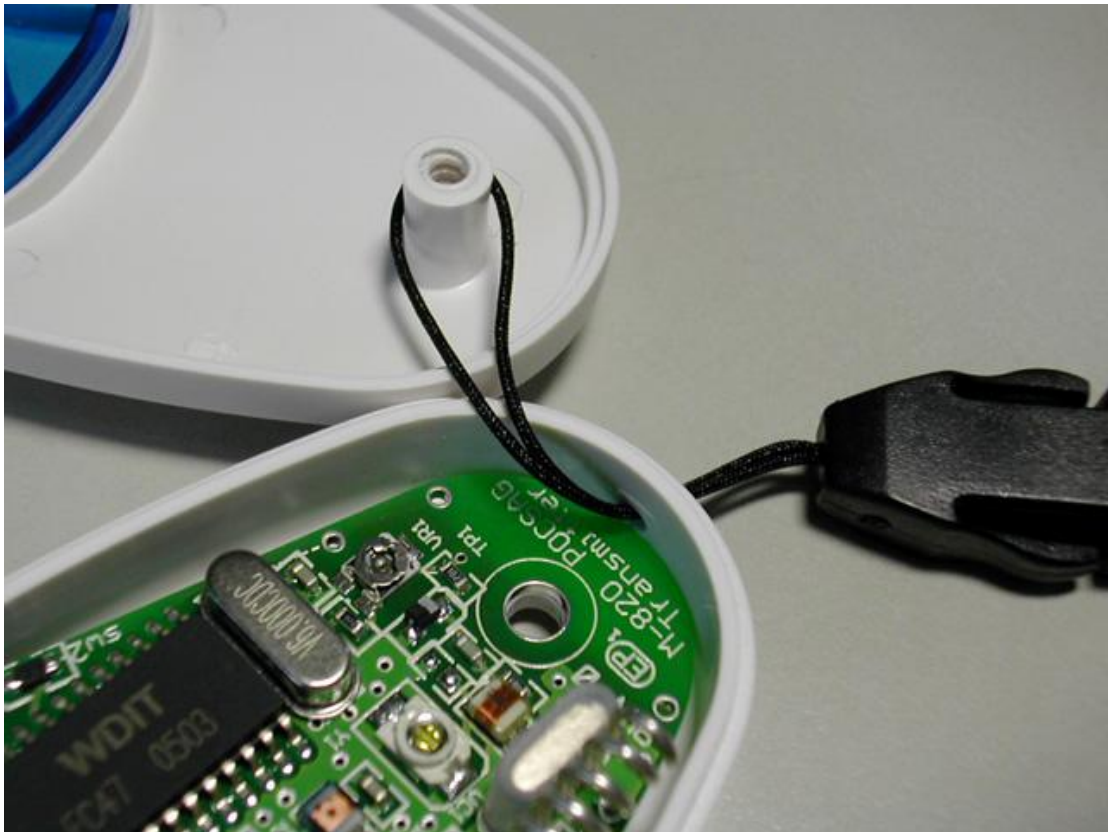
B. How to insert a necklace hanger string into Item #2018



1. Use the screwdriver to open the rear case first. Then insert the necklace hanger string thru the side case hole as shown on the above picture.



2. Put the string thru the case side hole and place on the case holding post.



3. Carefully close the case and put the screen back on.



4. Plug in both strings' conjunction connectors and ready to use it.



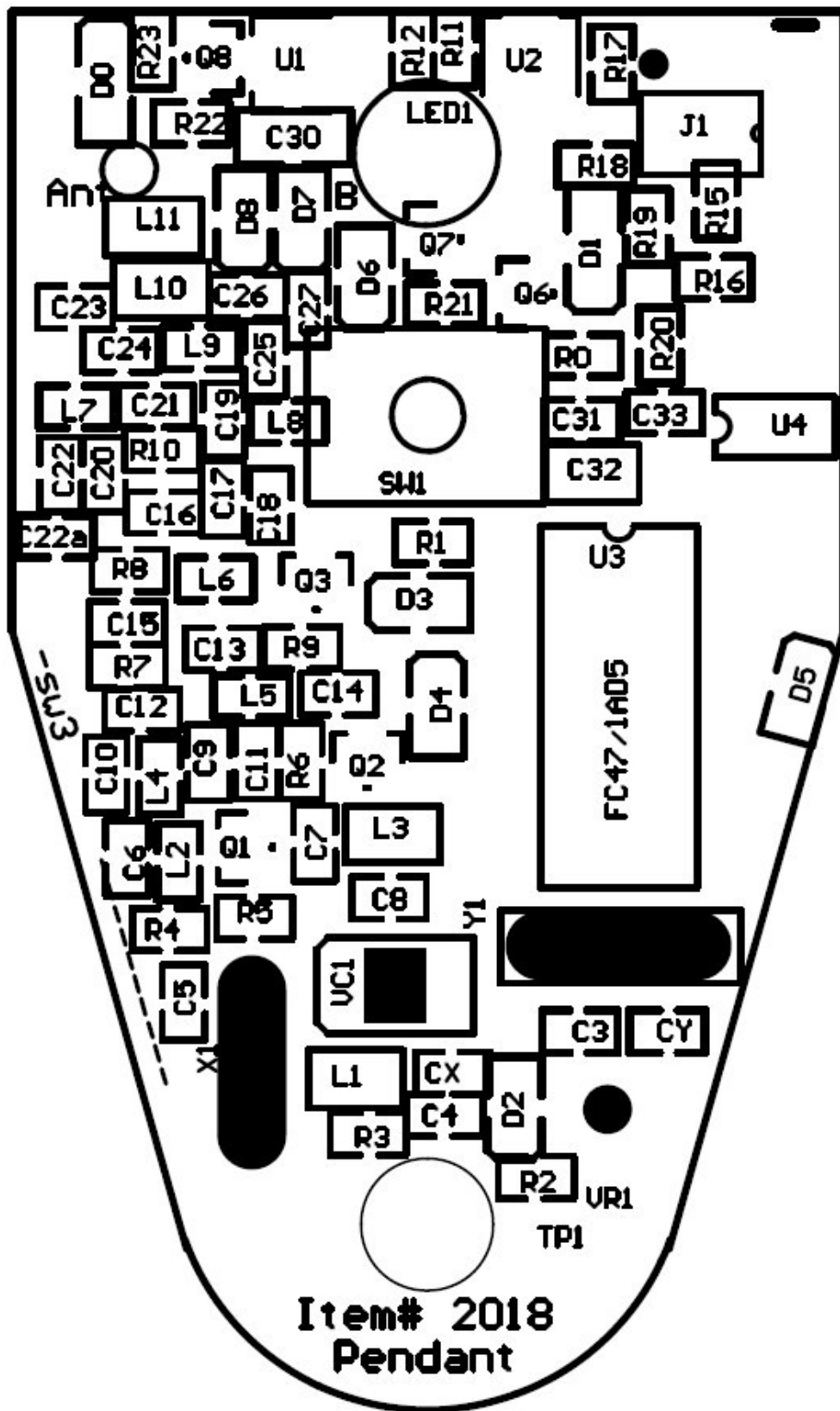
Part List of item #2018 10mw 430.-470.0MHz

Item	Part No.	Description	Size	Q'ty
1	U1	HT-7550-1	SOT-89	1
2	U2	HT-7044A-1	SOT-89	1
3	U3	WDIT FC47	SOP24	1
4	U4	93C66	SOT-89	1
5	Y1	6MHZ X'tal	49US	1
6	X1	74mhZ	UM-1	1
7	Q1,2,3	MRF6612-24-25	SOT23	3
8	Q6	2N4403	SOT23	2
9	Q5,Q7	2N3904	SOT23	1
10				
11	D0,1	IN4148	SMD 1008	2
12	D2	IS5603	SMD 0805	1
13	D3,4,5,6,7,8	MA118	SOD323	6
14				
15	VC1	10P 3 x 5 mm	SMD	1
16	VR1	10K ohm 3mm	SMD	1
17				
18	C3	OR	SMD 0603	1
19	C4	36P NP0	SMD 0603	1
20	C5,12,15,20	102	SMD 0603	4
21	C6,7,26,CY	22P NP0	SMD 0603	4
22	C8	47P NP0	SMD 0603	1
23	C9,10,11,16,17,19,27	51P NP0	SMD 0603	7
24	C13	13P NP0	SMD 0603	1
25	C14,18,21,	22P NP0	SMD 0603	3
26				
27	C22,31,33	103	SMD 0603	3
28	C22A,23,24	NC		

29	C25	6P NP0	SMD 0603	1
30	C30,32	105 Y5V	SMD 0805	2
31	CX	NC		
32				
33	R0	4.7K	SMD 0603	1
34	R1,3,20,21,22,23	10K	SMD 0603	6
35	R2	1K	SMD 0603	1
36	R4	100R ohm	SMD 0603	1
37	R15,16,17	100K	SMD 0603	3
38	R5,6,9,	22K	SMD 0603	3
39	R7,8	220R	SMD 0603	2
40	R10	12K	SMD 0603	1
41	R11,12	470R	SMD 0603	2
42	R18	33K	SMD 0603	1
43	R19	2.2K or 2K	SMD 0603	1
44				
45				
46	L1	680nH	SMD 1008	1
47	L2,4,5,6,8,9	91nH	SMD 0603	6
48	L3	630nH	SMD 1008	1
49	L7	12nH	SMD 0603	1
50	L10,11	56nH	SMD 0805	2
51				
52	SW1	6mm X 6MM X 8H	DIP4	1
53	J1	1.27mm 180D X 4P	1.27X4P	1
55	LED1	5mm RED+BLUE HL	DIP 5mm3P	1
56	PCB1	M-820 2L	2L 1.0mm	1

Part No. and location on PCB.

IPLP



FCC Compliance and Advisory Statement

This device complies with Part 15 of the FCC rules. Operation is subject to the following two conditions:(1) this device may not cause harmful interference, and (2) this device must accept any interference received, including interference that may cause undesired operation.

This equipment has been tested and found to comply with the limits for a Class B digital device, according to Part 15 of the FCC rules. These limits are designed to provide reasonable protection against harmful interference in a residential installation. This equipment generates, uses and can radiate radio frequency energy and if not installed and used in accordance with the instructions, may cause harmful interference to radio communications. However, there is no guarantee that interference will not occur in a particular installation. If this equipment does cause harmful interference to radio or television reception, which can be determined by turning the equipment off and on, the user is encouraged to try correct the interference by one or more of the following measures:

- 1.Reorient the receiving antenna.
- 2.Increase the separation between the equipment and receiver.
- 3.Connect the equipment into and outlet on a circuit different from that to which the receiver is connected.
- 4.Consult the dealer or an experienced radio/TV technician for help.

Any special accessories needed for compliance must be specified in the instruction manual.

Warning: A shielded-type power cord is required in order to meet FCC emission limits and also to prevent interference to the nearby radio and television reception. It is essential that only the supplied power cord be used. Use only shielded cables to connect I/O devices to this equipment.

CAUTION: Any changes or modifications not expressly approved by the party responsible for compliance could void your authority to operate the equipment.