

TECH FACTS BULLETIN

TECHNICAL SUPPORT

P/N 466-5239 • REV A • 29AUG16

TX-4200-01 Supervision using DL900

Introduction

Interlogix is providing this information to instruct dealers on re-configuring alarm panels to assure that the panels are supervising Panic Devices with part numbers: TX-4200-01-xx.

This bulletin is for users of DL900 software.

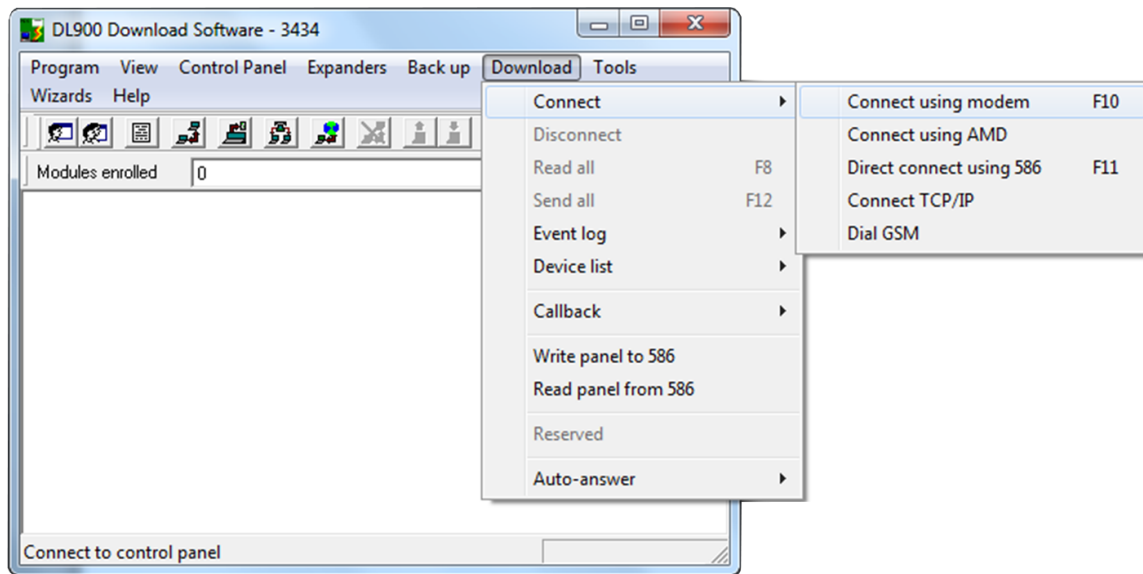
Issue

Panic Devices (with part number TX-4200-01-xx) may be enrolled as unsupervised. If that is the case, failures of the device may go undetected. This procedure will rectify that. Dealers can re-configure alarm panels to supervise TX-4200 devices.

Procedure

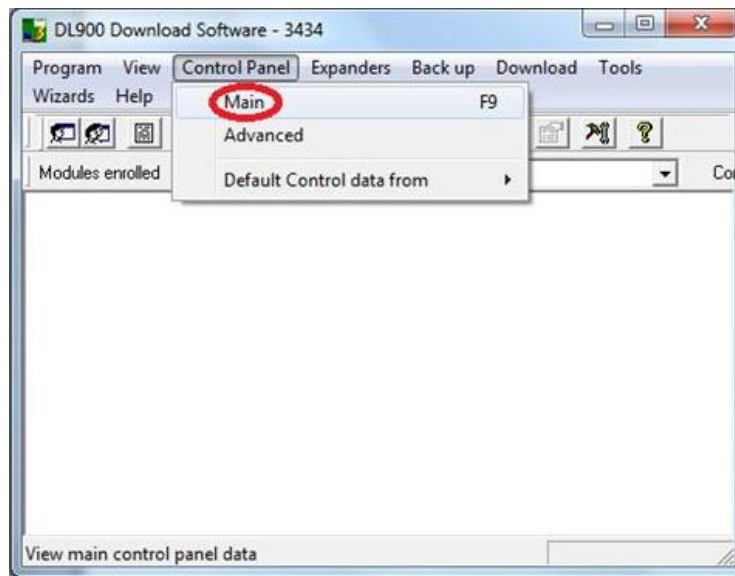
1. Log in to the DL900.
2. Select the account to edit.
3. On the main panel window select “Download”, choose “connect” and choose the connection path that is available for this panel. Proceed when the panel connection is established.

Choose connection path



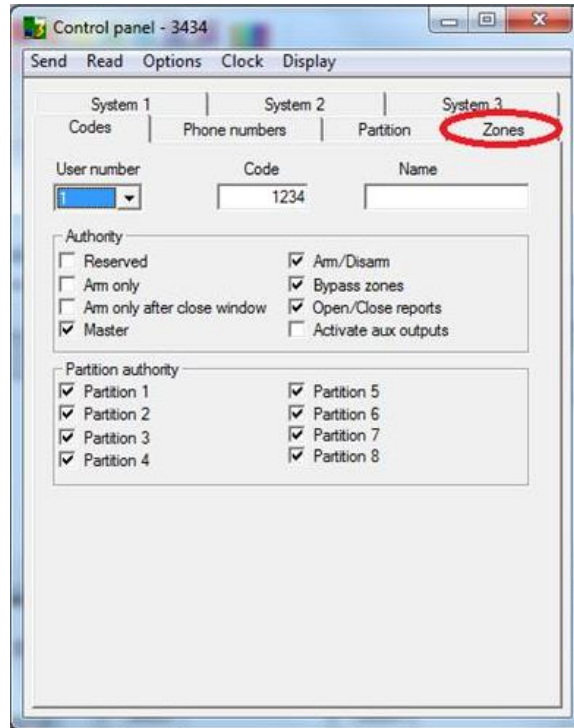
4. On the main panel window select “Control Panel”
5. Select “Main” a new window will open.

Open Control Panel



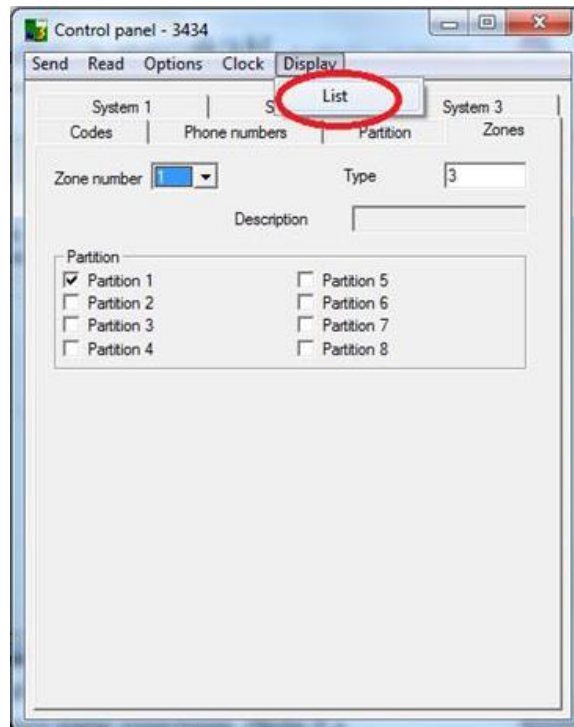
6. In the new Control Panel window select the “zones” tab.

Select Zones tab



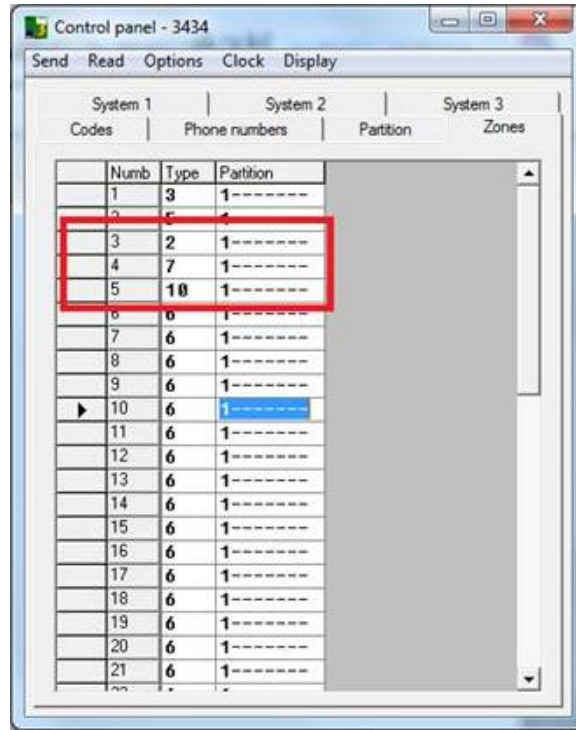
7. With the zones displayed click on the Display option and choose “list”.

Select List tab



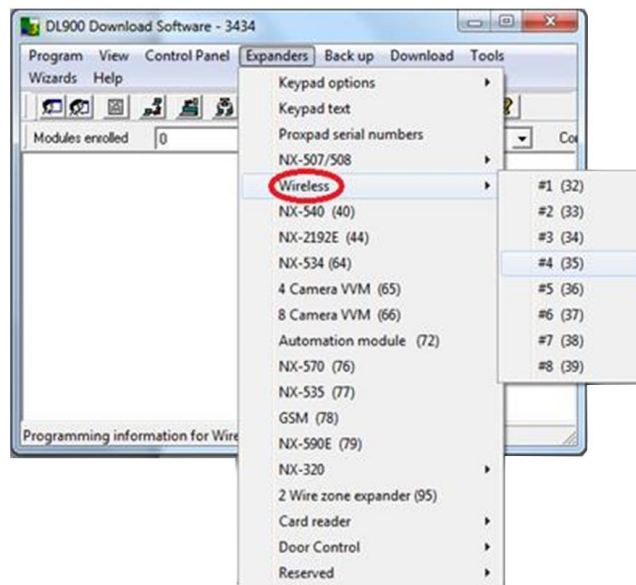
- Look for all zone types 2, 7 and 10. These are the most common panic zone types. (Note if a custom zone type was used for panics, also search for that zone type.). Write down the zone numbers that met the search criterion.

Choose Zones

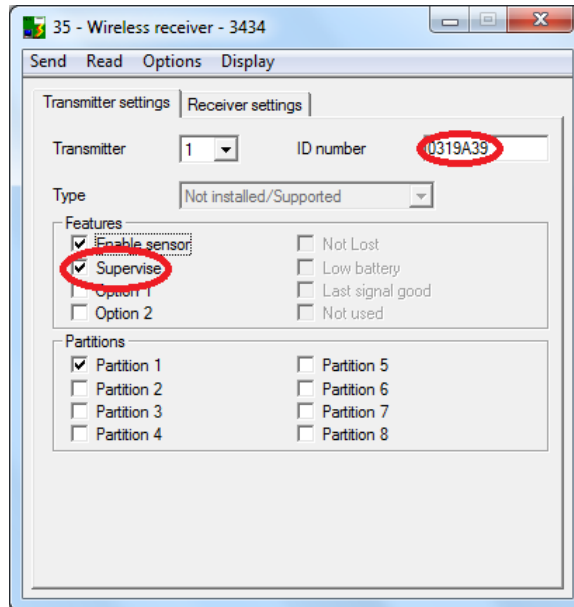


- In the main window select “Expanders”, select “wireless” (or “keypad options” if using the NX-148E-RF keypad) for the module with the zone that needs to be edited. A new window will open.

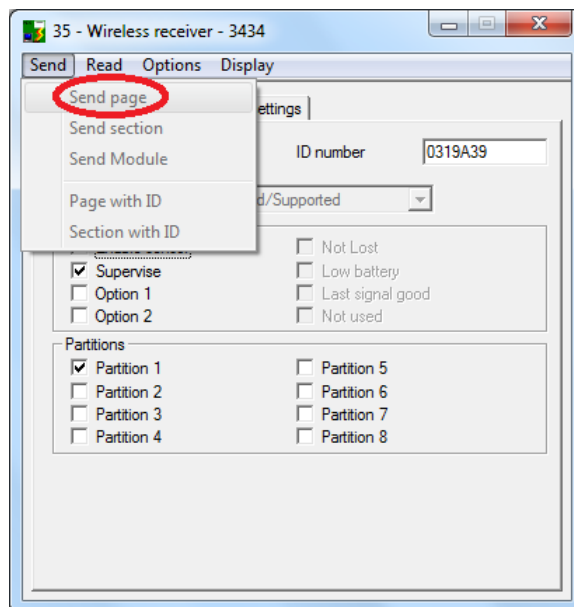
Choose Zone type



10. Go to the transmitter that corresponds with the zone that needs to be edited.
11. Confirm the ID number starts with a “03” to confirm the device is a panic button.



12. Check the “Supervise” box
13. Select “Send”, and select “send page”. Follow this step for each sensor that needs to be edited.



14. When complete on the main window choose “Download”, choose “disconnect”
15. Have homeowner test the sensors.