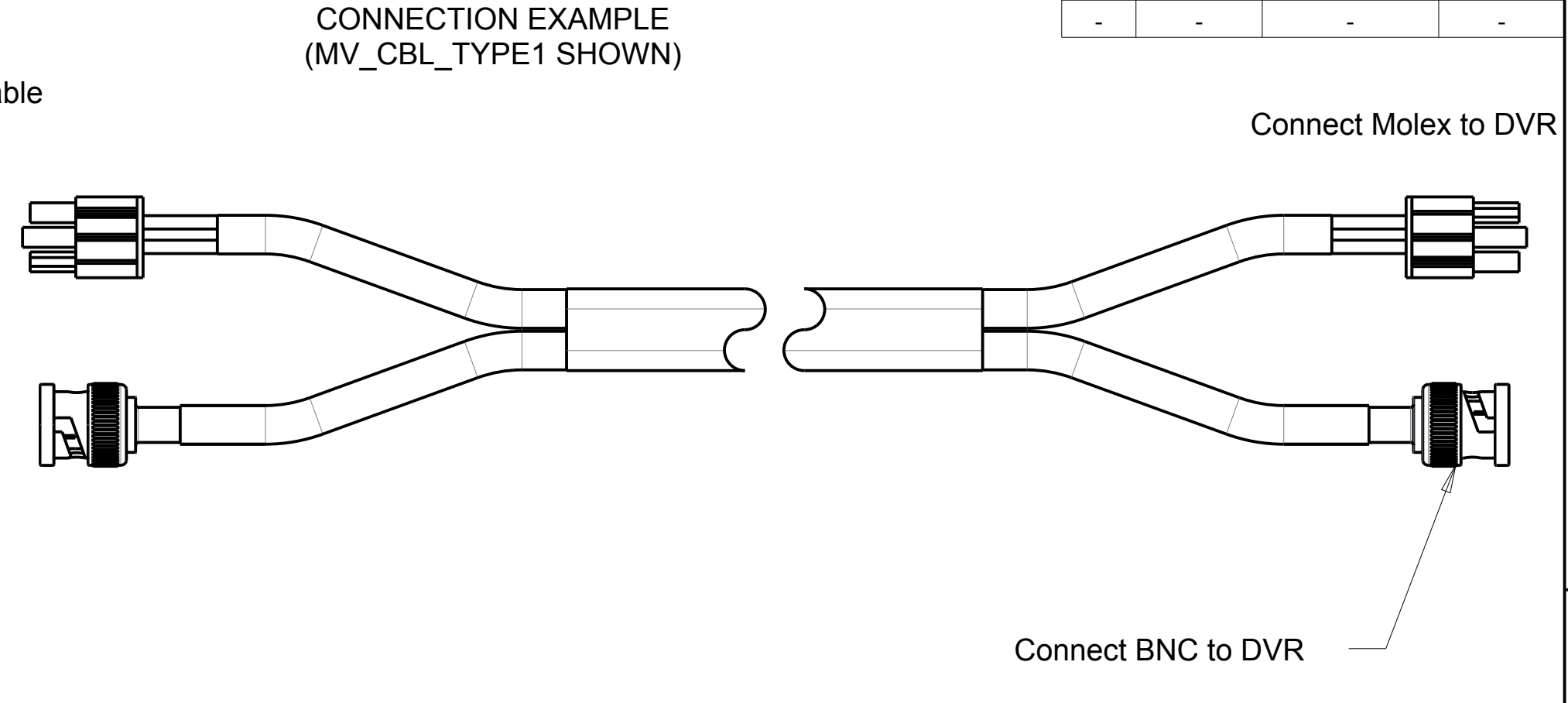
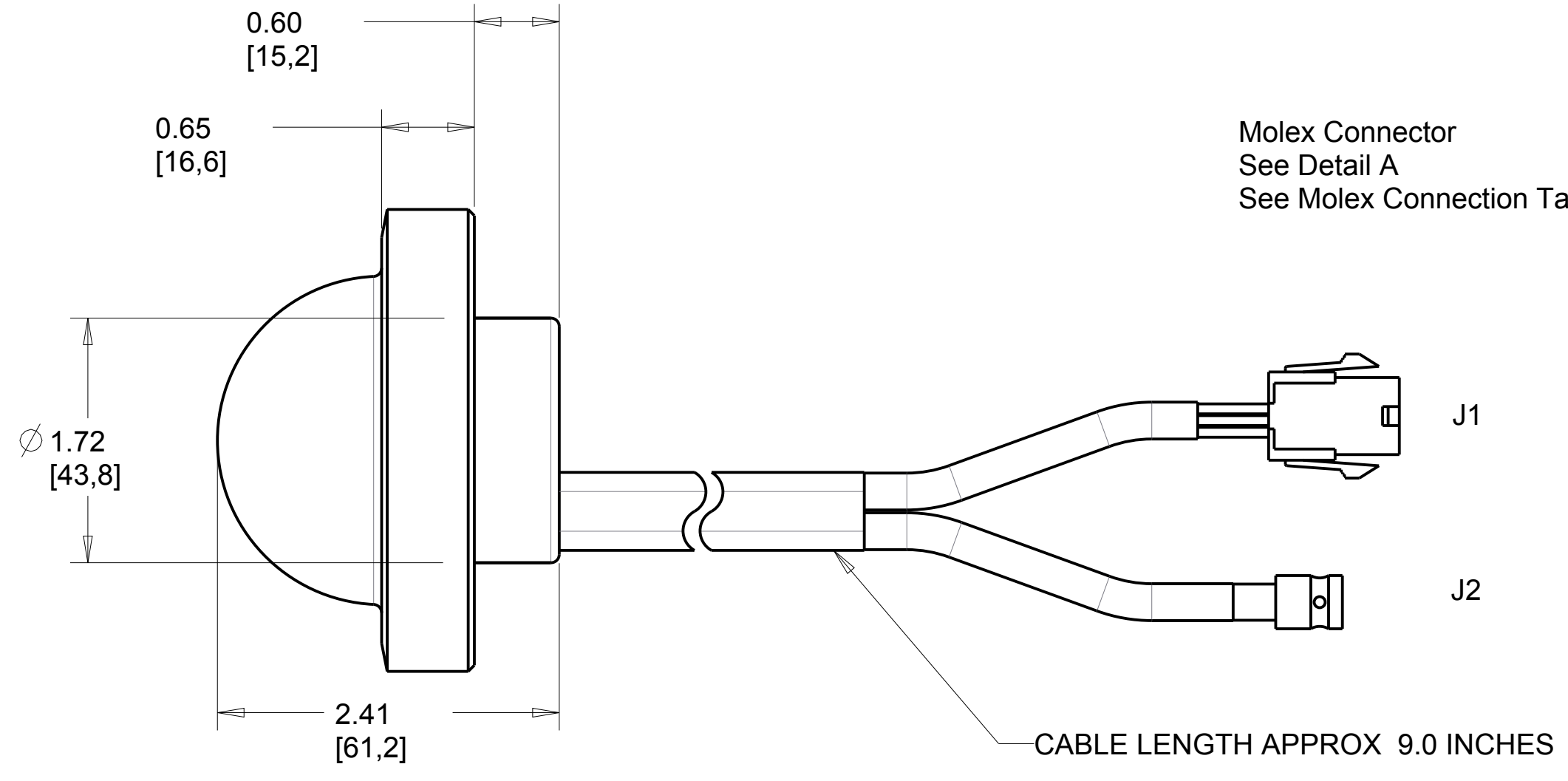
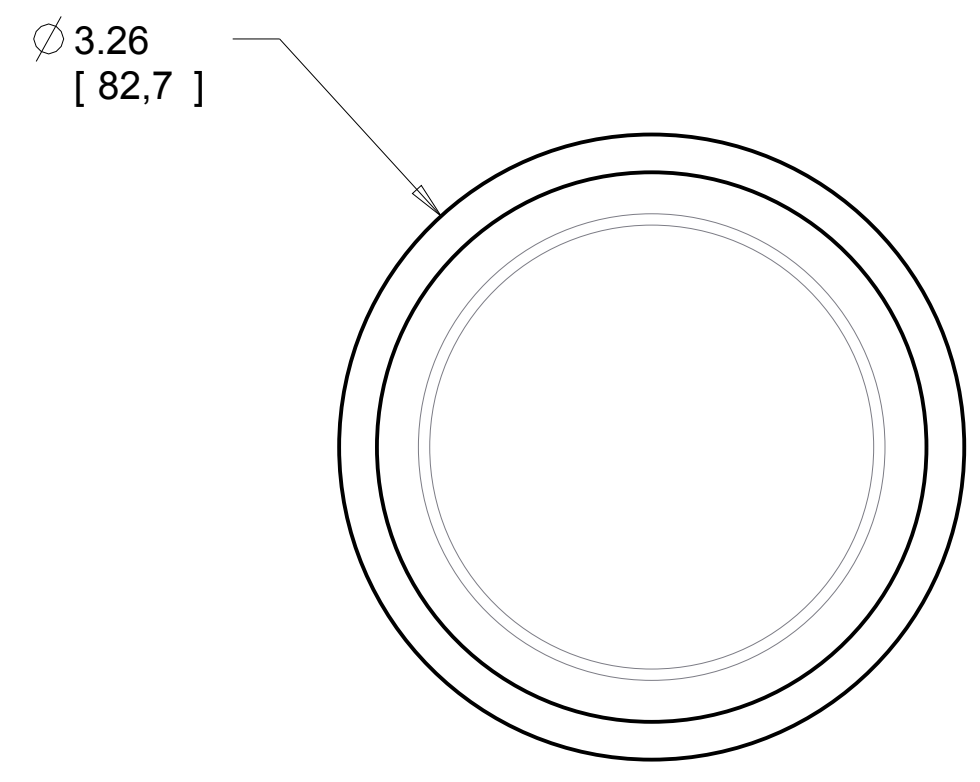


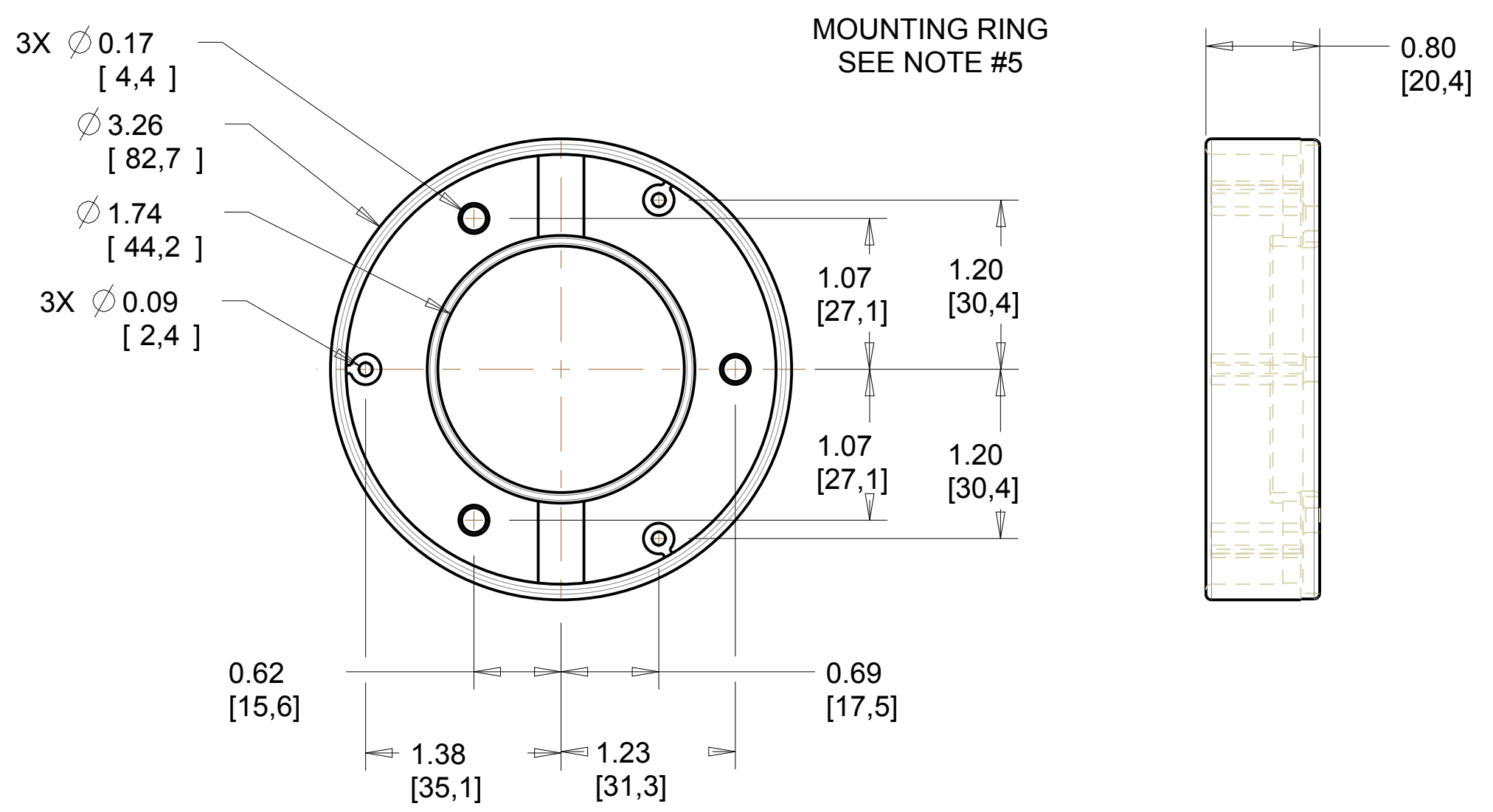
REV	DATE	ECN No.	ENG
A	-	-	-
-	-	-	-
-	-	-	-
-	-	-	-

A



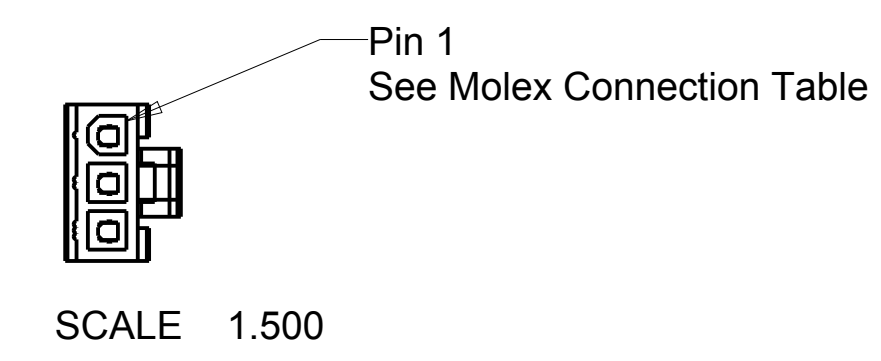
A

B



CAMERA CONNECTORS				MATING CONNECTORS		
CAMERA CONNECTOR	PART NUMBER	VENDOR	CONNECTION NUMBER	MATING CONNECTOR	PART NUMBER	VENDOR
MINI-FIT PLUG HOUSING, 3 POS.	39-01-4032	MOLEX	J1	MINI-FIT RECEPTACLE HOUSING, 3 POS.	39-01-4030	MOLEX
FEMALE BNC PLUG, 75 OHM	31-10-75 or Equiv.	AMP	J2	MALE BNC PLUG, 75 OHM	031-71013-RFX	AMP

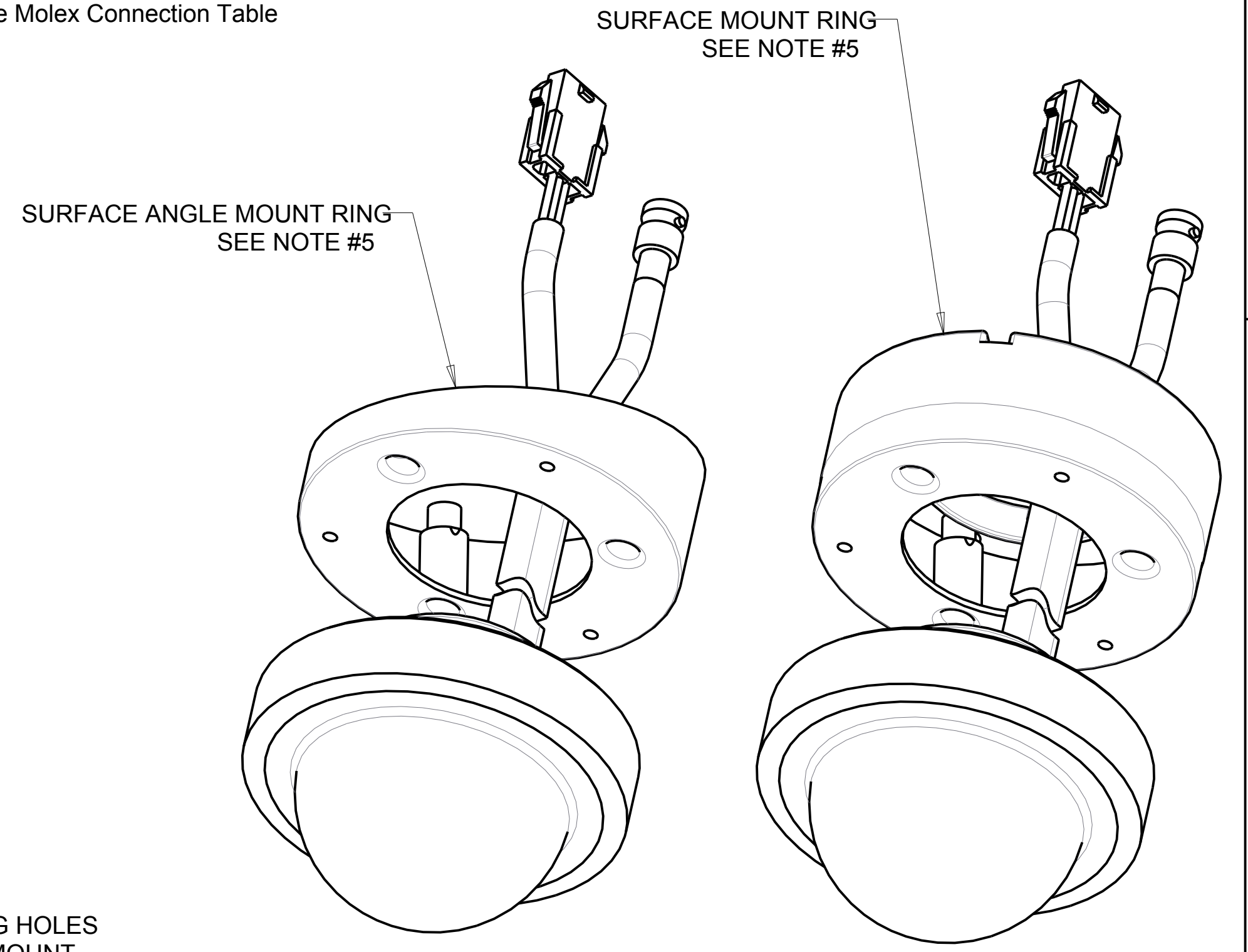
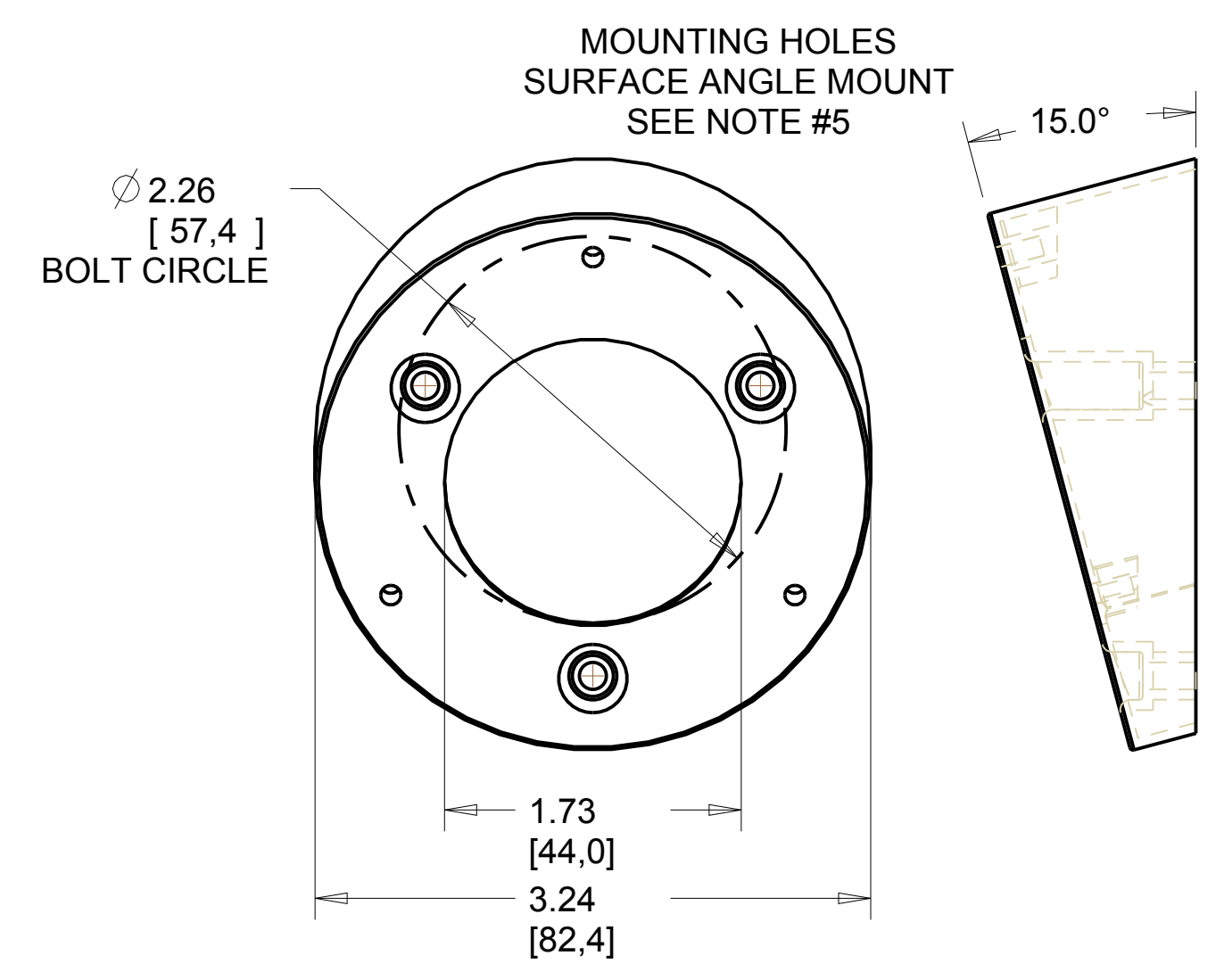
MOLEX CONNECTION TABLE	
PIN	SIGNAL
1	Power +
2	Power -
3	Audio



B

C

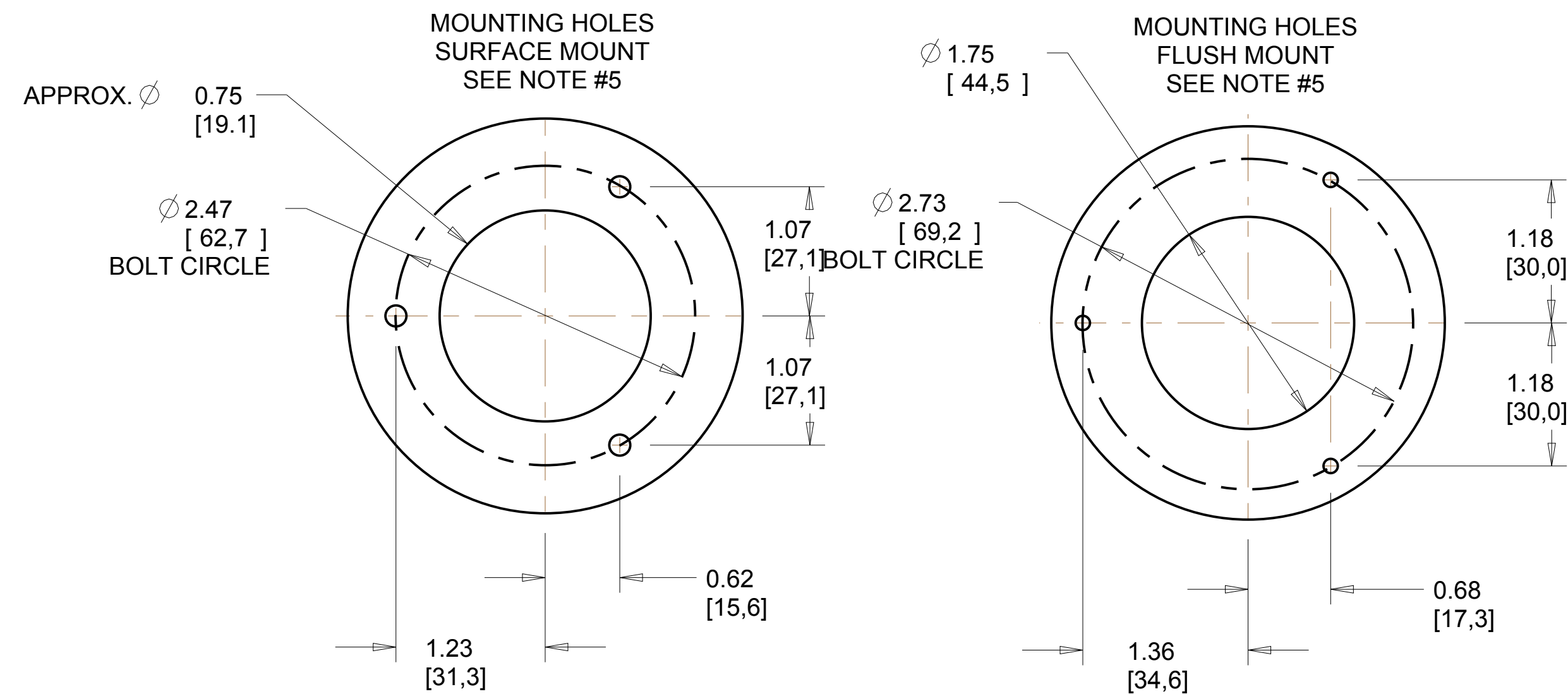
- NOTES:**
- PART NUMBERS:**
 - MVC-7100-29-W "Mini-dome, 600TVL, 2.9mm lens, white, No IR"
 - MVC-7100-36-W "Mini-dome, 600TVL, 3.6mm lens, white, No IR"
 - MVC-7100-60-W "Mini-dome, 600TVL, 6.0mm lens, white, No IR"
 - MVC-7100-29-WI "Mini-dome, 600TVL, 2.9mm lens, white, with IR"
 - MVC-7100-36-WI "Mini-dome, 600TVL, 3.6mm lens, white, with IR"
 - MVC-7100-60-WI "Mini-dome, 600TVL, 6.0mm lens, white, with IR"
 - MVC-7200-29-W "Mini-dome, 600TVL, 2.9mm lens, white, with WDR"
 - MVC-7200-36-W "Mini-dome, 600TVL, 3.6mm lens, white, with WDR"
 - MVC-7200-60-W "Mini-dome, 600TVL, 6.0mm lens, white, with WDR"
 - OPERATION:**
 - This assembly is used in conjunction with MobileView DVR
 - SPECIFICATIONS:**
 - a. Operating Temperature: -10C to ~+50C (14F to +122F)
 - b. Operating Voltage: 12 VDC Nominal
 - c. 0.84 W (Without IR)
 - 2.0 W (With IR)
 - d. Nominal Weight: 0.88 lbs (400 g)
 - Dimensions Shown are: Inch [mm]**
 - INSTALLATION:**
 - a. Assembly may be Mounted in Interior Location Only
 - b. Loosen Allen Screw to Remove Dome Cover
 - c. Drill Three Mounting Holes and One Cable Hole, as Shown on Drawing, in the Mounting Surface.
 - d. Feed Power/Video Cable Through Large Hole in Mounting Surface
 - f. Attach Camera to Mounting Surface Using Appropriate Hardware.



C

D

- OPERATION:**
 - This assembly is used in conjunction with MobileView DVR
 - SPECIFICATIONS:**
 - a. Operating Temperature: -10C to ~+50C (14F to +122F)
 - b. Operating Voltage: 12 VDC Nominal
 - c. 0.84 W (Without IR)
 - 2.0 W (With IR)
 - d. Nominal Weight: 0.88 lbs (400 g)
 - Dimensions Shown are: Inch [mm]**
 - INSTALLATION:**
 - a. Assembly may be Mounted in Interior Location Only
 - b. Loosen Allen Screw to Remove Dome Cover
 - c. Drill Three Mounting Holes and One Cable Hole, as Shown on Drawing, in the Mounting Surface.
 - d. Feed Power/Video Cable Through Large Hole in Mounting Surface
 - f. Attach Camera to Mounting Surface Using Appropriate Hardware.
- Use Backing Plates if Necessary for Stability.
- FLUSH MOUNT:** Do Not Use the Mounting Ring. Attach Camera Directly to Mounting Surface.
- SURFACE MOUNT:** Attach Mounting Ring to Mounting Surface, and Attach Camera to Mounting Ring.
- SURFACE ANGLE MOUNT:** Attach surface angle mount to mounting surface and then attach camera to surface angle mount.
- If Possible, Adjust Camera Angle/Position for Desired Field of View. See Camera Installation Manual for Adjustment.
 - Reattach Dome Cover.



STANDARD TOLERANCE			
XX	Inch ± .010	MM	± .254
XXX	± .005		± .127
FRACTION	± .03		± .762
ANGLES	± 1 DEG		
SURFACE	63		1.6µ
FINISH	UNLESS OTHERWISE NOTED		
THIRD ANGLE PROJECTION			
DRAWN BY: PATR	DATE: 5-24-14	MATERIAL:	FINISH:
FILE NAME: MVC7100	SCALE: 1.000	SIZE: A	SHT: 1/1
DRAWING NUMBER: MVC-7100_B	REVISION: B	RELEASE LEVEL: B	

D