

Video Manager Quick Reference

Video Manager Overview

You can use MobileView Video Manager (also called “the Viewer”) to record, view, replay, search for, and archive recorded video, audio, and GPS data.

Starting the Viewer

Manual Start Up

You can start the Viewer manually, either:

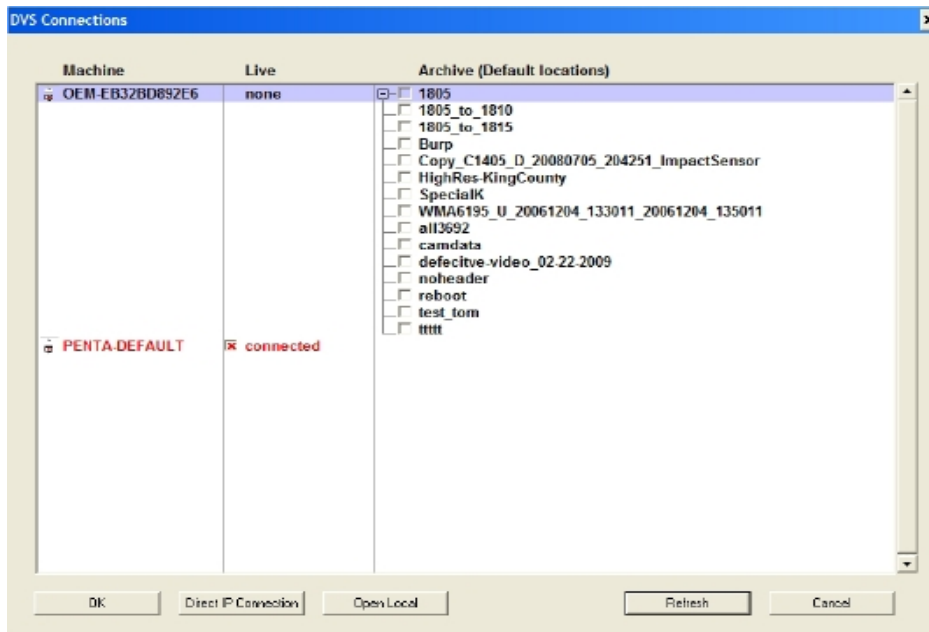
- Via the MobileView Video Manager shortcut located on the desktop
— or —
- Via the Start > Programs menu

Locate the Video Manager Application and Double-Click to Open it.

Startup Connection

After double-clicking Video Manager the DVS Connections Window will open.

By default, Viewer opens with a blank screen and displays the DVS Connections dialog box. The DVS Connections dialog box lists online video data stores. A data store can reside on a DVR or another PC from which Video Manager is running.



Machine Column: Lists all network devices running MobileView Software that have an available live or archival video data store.

Live Column: Indicates whether the device has a live video data source. You will not use this column if connecting with a docking station. Would be present and available if using a laptop to connect live to a DVR on a vehicle.

Archive Column: Indicates whether an archival data store is available on the listed device. A plus symbol (+) indicates that archives exist.

Viewing previously saved video on your PC:

- This footage is stored on your computer and can be viewed at any time in the following location:

C: Camera\Archives

To view archived (saved from a DVR or via the docking station) footage:

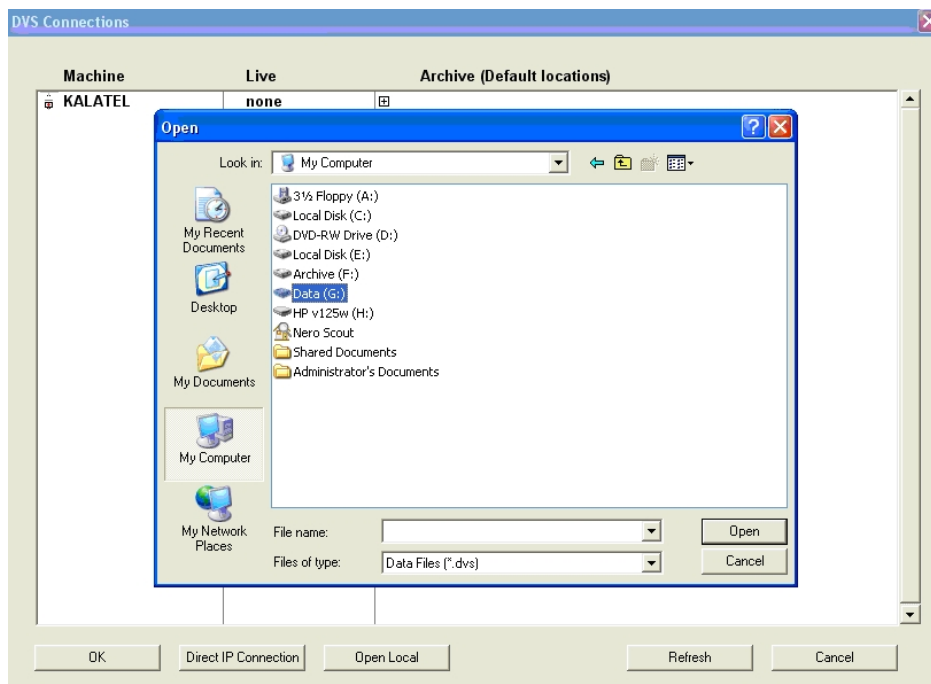
1. Go to the archive column.
2. Hit the plus to expand the selection.
3. Select the checkbox to the archive.
4. Login

Using a Docking Station:

The Docking Station is used to view footage currently residing on a DVR hard drive caddy (HDD) removed from a vehicle.

The HDD must be inserted and locked into place, before the docking station is powered ON.

1. Insert the HDD Caddy into the docking station. Lock Caddy into place.
2. Turn On Docking Station
3. Launch Video Manager Application
4. Click the **Open local** button at the bottom of the connection manager window.
5. The below screen shot will appear. Browse to the desired drive.





Drives on the caddy:

Archive: Location of all Alarm Events stored on the HDD.

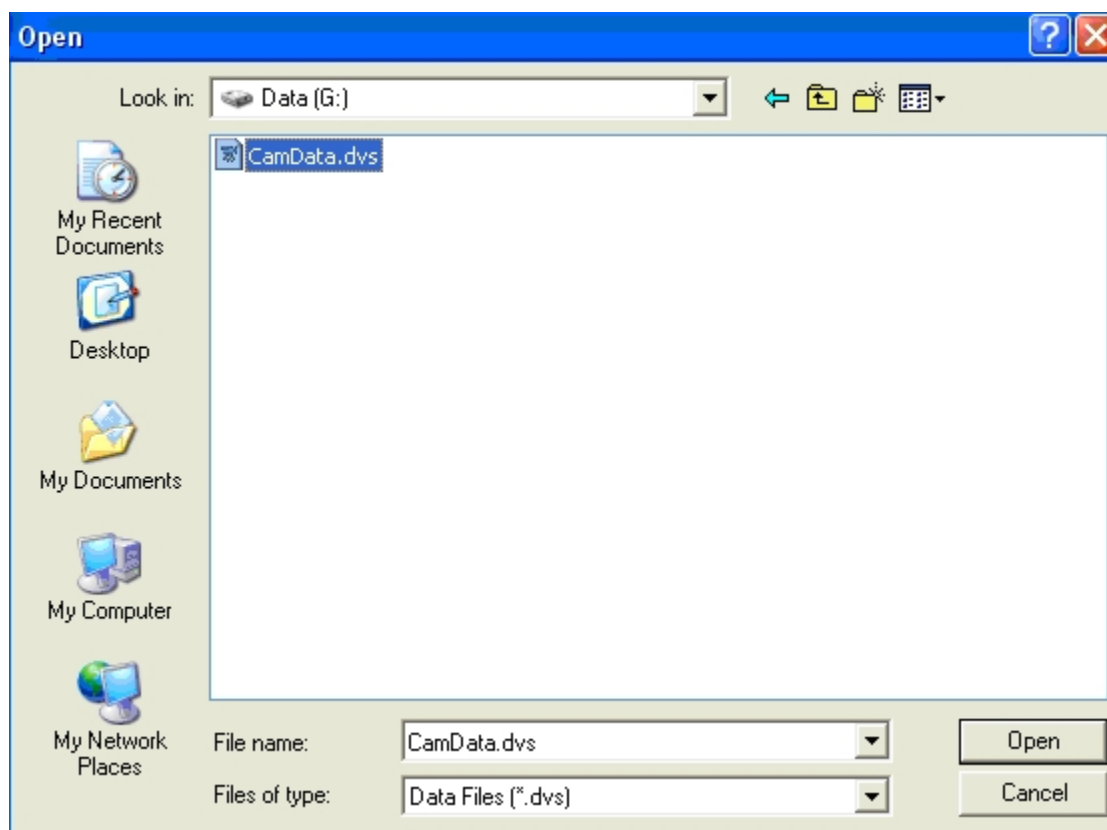
Data: Location of the camdata.dvs file – all video stored on the HDD is stored here.

6. If you want to look at all video currently on the removable Hard Drive
Browse to the camdata.dvs file on the Data drive

Click on camdata.dvs

7. If you want to look at all archives or tagged video on the removable hard drive browse to the Archive drive and double click on the archive you wish to play.

NOTE: Drive letters for Archive and Data will be next available for given computer. You will always see Archive and Data, but the drive letter will vary based on network drive mappings.



8. Click Open



9. Login when prompted:

Note: If on a network this may be the username and password you use to login to the machine.

Exiting the Viewer

Exiting the Viewer closes all connections to local and remote DVRs and shuts down the Viewer.

To exit the Viewer:

1. Click Close to shut down any video footage that is being show.
2. Click the “power” button to close the Video Manager Software Application.

Viewing pane

The viewing pane displays video clips from multiple cameras on the vehicle.

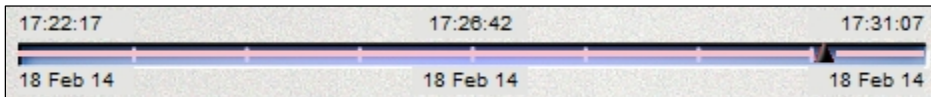




Timeline

The timeline shows how much footage is available for playback. When monitoring a single DVR connection, this shows the start and end times of the recorded file. The time on the left side represents the start time. The time on the right represents the end time. This is the total amount of video surveillance footage stored on the HDD.

A small marker moves across the timeline to show the current point of playback. This value matches that shown in the status pane.



Text Overlays/Camera Titling

Viewer can be configured to display image properties in the header or footer of the image.

- Date/Time
- DVR Site Name
- Reference
- Camera Name
- GPS/Speed





To Access:

1. Click Config



2. Click Local Settings

System to Configure: AG349389 SacRT

Remote Mobileview settings

- Vehicle Setup
- Camera Setup
- Audio Setup
- Alarm Events
- I/O Devices
- System

Local Viewer Settings

- Local Settings**
- About

Exit Configuration

- Close

Local Settings

- Camera Display
- Map Display
- System
- Archives

Camera Tiling

	Header Length	Footer Length
Date and time	Short	None
DVR site name	<input type="checkbox"/> 0	<input type="checkbox"/> 0
DVR site reference	<input checked="" type="checkbox"/> 30	<input type="checkbox"/> 0
Camera name	<input type="checkbox"/> 0	<input type="checkbox"/> 0
Location (lat/long)	<input type="checkbox"/> 0	<input checked="" type="checkbox"/> 30
Speed and heading	<input type="checkbox"/> 0	<input checked="" type="checkbox"/> 30
Recording status	<input type="checkbox"/> 0	<input type="checkbox"/> 0
Horizontal alignment	Center	Center
Use text window	<input type="checkbox"/>	<input type="checkbox"/>
Text font size	7	7
Text font color	Header	Footer

Camera Sequencing

- Auto camera cycle dwell time: 5 seconds
- Dwell time on camera pop-up: 20 seconds

Sample Layout

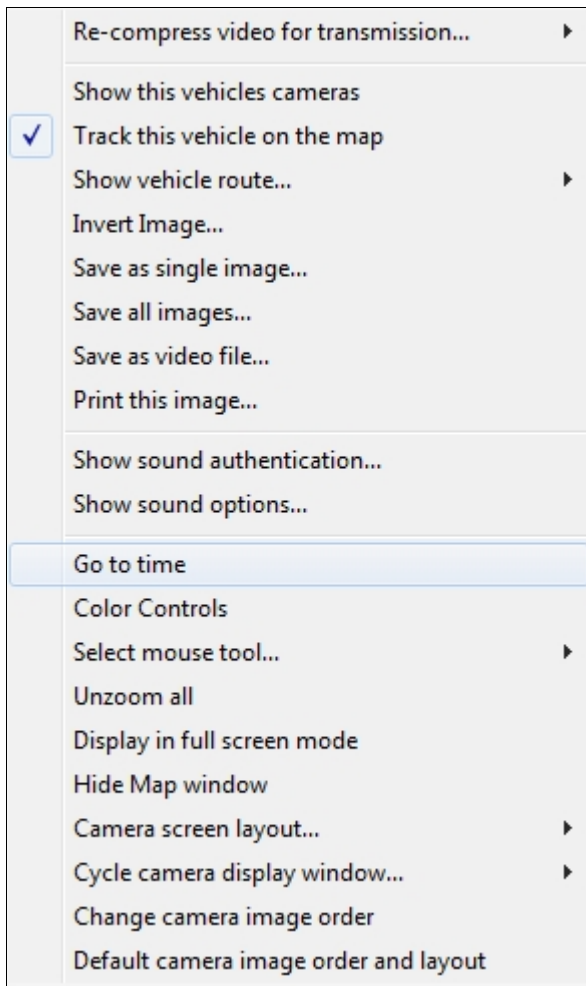
Display Settings

- Speed units: Miles per hour (mph)
- Allow far zooming out

Apply Close

Right Click-Menu (Context Menu)

Many of the functions provided through the GUI screen buttons are also available by right clicking in a camera, map, or vehicle display window. More importantly, several functions relating to camera displays, such as saving and printing camera images, are only available through the camera window right-click menus.



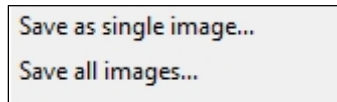


Save as single image or Save all images

You can save and archive individual camera pictures for later reference.

To save as a JPG:

1. Right-click in the camera window and select “Save as single image” or “save all images”



2. Choose the required image format from the dropdown list in the save dialog box (JPEG or BMP).
3. Choose the filename and folder location to store the image and click OK.

Note: If text overlays are turned on, the saved image will also contain the text overlay. Turn off image overlays (using the Overlay button) to remove text overlays from the saved image.

Saves jpg images in C: Camera\Archives

Default File Name includes:

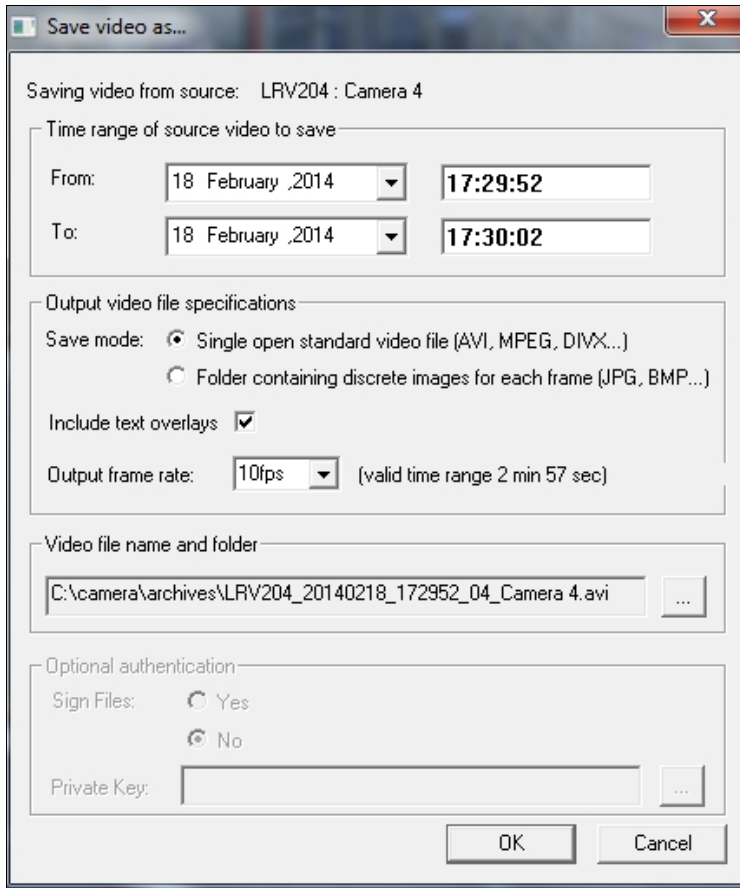
- Name of Vehicle
- Year/Month/Day
- Time: Hour/Minute/Seconds/Millisecond
- Camera #
- Camera Name



- Saves footage from one camera
- No audio
- Total length not to exceed ~3 minutes in length
- Not encrypted.
- Opens in Windows Media player



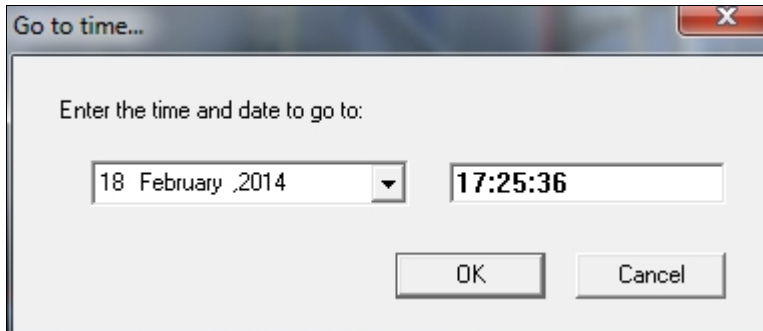
- Default file name given by default, but may be modified.





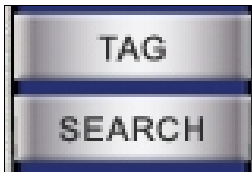
Go To Time – skips to user entered date/time

To go directly to a user specific date and time, right-click in the camera window and select **Go to time** from the right-click menu.



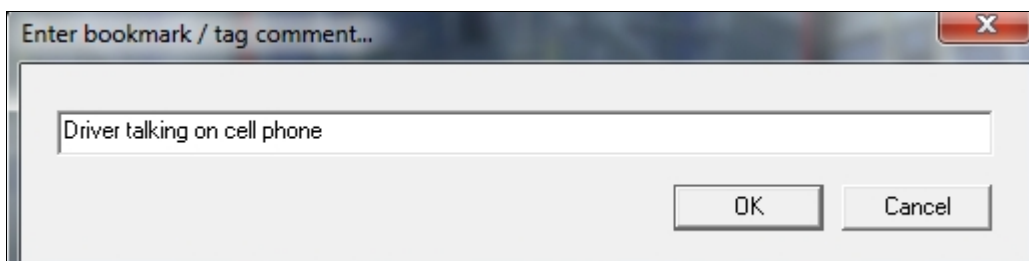
Bookmarks (tag and search)

This section explains how to use the tag and search functions. You can Tag the start and end of a specified video clip to make saving incidents easier. By tagging a start and end you don't need to remember the exact time something happened.



Tag: To enter a bookmark or tag comment at your chosen video file, click the Tag button. When you click the Tag button, a bookmark prompt appears. At the prompt, enter the bookmark or tag comment, and click OK.

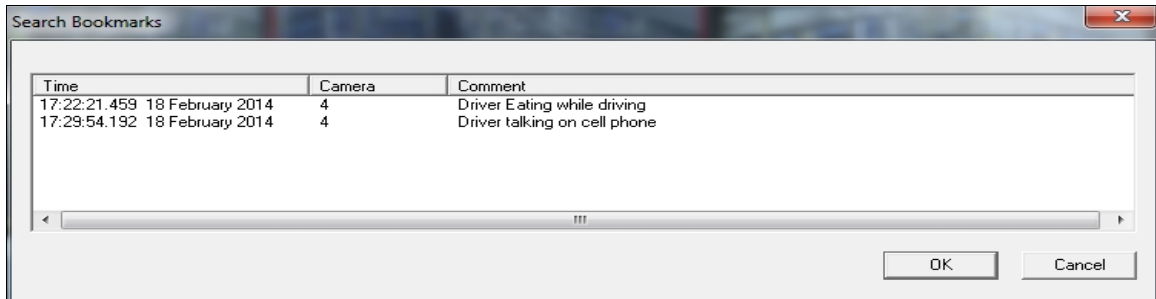
Any number of bookmarks can be entered to denote specific points of interest in the reviewed video file. Once bookmarks have been entered, click SEARCH to display the current list.





Search: When you click the Search button, the Search bookmarks prompt appears. It shows currently set bookmarks and notes the time and date each was created, as well as the camera and tag comment.

When you close Video Manager the Tags/Bookmarks will automatically be erased. They are session specific.





Saving Video to Burn to DVD

Video Manager lets you save video of interest on CD/DVD for later playback or viewing.

Save control as .DVS File

Video saved in this manner is secure and saved as a .dvs file extension.

1. Click the Save button.
2. Ensure Save data from.
3. Select system to archive and enter archive name under destination
4. Select the range to save:
 - All.** Save all archives in the DVR machines. It is not recommended to use this option.
 - Bookmark.** Save archives from the bookmarked files (TAG). Recommended option.
 - Manual.** Manually enter start and stop dates and times.
5. Deselect any boxes in what to save if you do not want the default settings.
6. Optional settings: enter temporal, channel, and priority rate.
 - Temporal. This is the value that sets video resolution in fps for the video being saved. If you are recording at 10 FPS you can save at a lower FPS. You cannot record at 4FPS and save at a higher value.
 - Channel. The default setting leaves the channel field blank and saves all video channels. If you enter a number for a specific camera, only video from that camera will be saved.
 - Priority. Choose the required priority for saving video. Default is Low and should not need to be modified.
7. Enter account name and password under security.

Account needs to match with how the machine is logged into the system. If you enter in the wrong account information you will receive an error message.

 - Viewer Account: viewer/geview
8. Click OK.
9. The File copy status bar appears on a translucent window. Wait until the file finishes saving.



Save to Archive [X]

Source
 Save data from: **PENTA-DEFAULT Live Data** [v]
 Use remote system via USB drive
 Remote Save Report [button]

Destination
 System to archive on: **ES-3PBBHF1** [v]
 Archive name: [text] Save As... [button]

Range to save
 All
 Bookmark: From [text] To [text]
 Manual: From **24 September, 2009** **16:07:24**
 To **05 October, 2009** **10:50:48**

What to save
 Images GPS Sound

Filters and Priority Rate
 Temporal [text] (hrs) Priority Rate **Low** [v] Spatial Filter: Lat: D [] M [] S []
 Channel [text] (eg 1,3,4) Radius [text] m Lng: D [] M [] S []

Security
 Device Name: **PENTA-DEFAULT**
 Account Name: [text]
 Password: [text]
 Check Password: [text]

Launch Burner [button] OK [button] Cancel [button] Auto Archive Management [button]

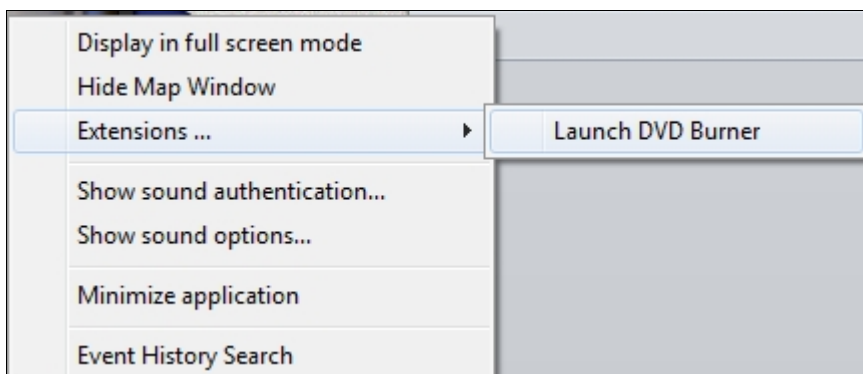
Burning an Archive/Evidence Disk

Note: Video Clip should be saved as .DVS file before launching burner.

Opening the burner application

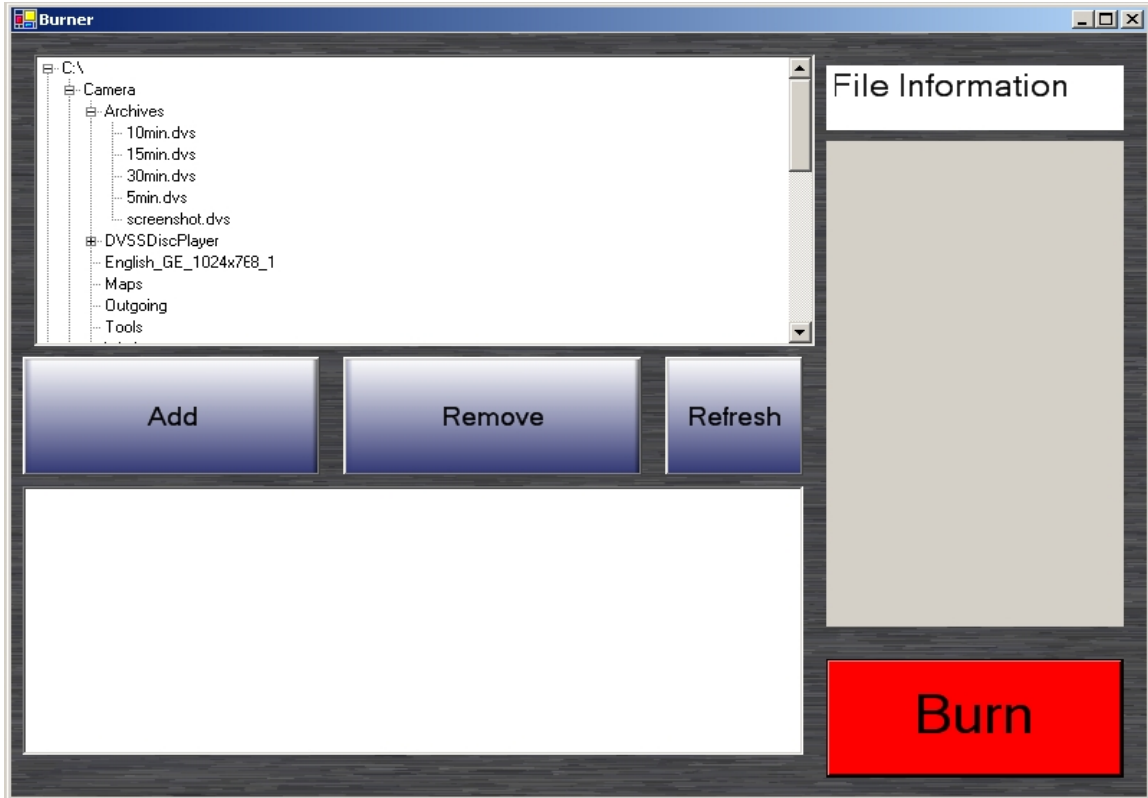
You can open the burner application by either:

- Clicking Launch Burner in the Save to Archive dialog box
 - or —
- Right-clicking on the gray area between the POWER and ZOOM buttons, clicking Extensions on the shortcut menu, and then clicking Launch DVD Burner.



To burn an archive disk:

1. Select Archive to burn to CD.
2. Scroll to the file you want to burn to DVD > Highlight it
3. Click Add
4. Click Burn
5. Select the Time Zone to assign to the archive (should be your time zone)
6. Click Go



When the archive is done burning the DVD should automatically eject. The DVD can be played back in any PC and should Auto Run.