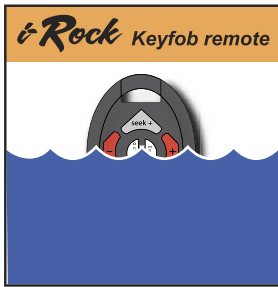


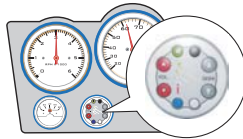
BACK

FRONT



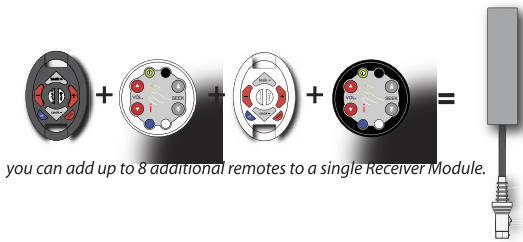
The unique holder allows attachment to any rounded surface...bow rails, ski handle, fishing pole, wakeboard tower...you decide!

not only is the i-Rock remote **WATERPROOF**...it even **Floats!**



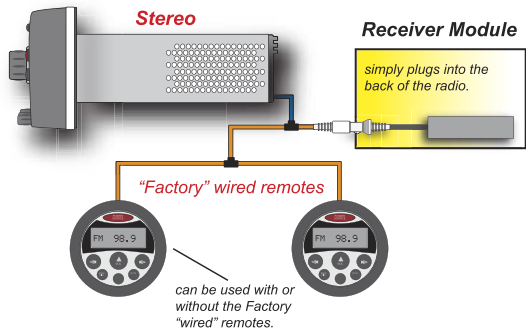
this versatile design will even allow the remote to be "flush" mounted or even installed in a 2-1/8" gauge hole.

This Patent-Pending design allows the i-Drive remote to "snap" into the center of most Steering wheels including: Dino, Grant, Momo, QMI and many others.



you can add up to 8 additional remotes to a single Receiver Module.

Installation is easy and only takes a few minutes!



can be used with or without the Factory "wired" remotes.

NOTE: THE MANUFACTURER IS NOT RESPONSIBLE FOR ANY RADIO OR TV INTERFERENCE CAUSED BY UNAUTHORIZED MODIFICATIONS TO THIS EQUIPMENT. SUCH MODIFICATIONS COULD VOID THE USER'S AUTHORITY TO OPERATE THE EQUIPMENT.

interactive
TECHNOLOGIES, INC.

www.h2owaves.com

i-rock
wireless
STEREO CONTROL

This device complies with FCC Rules part 15. Operation is subject to the following conditions: (1) this device may not cause harmful interference, and (2) this device must accept any interference that may be received, including interference that may cause undesired operation.