

Federal Communications Commission Statement / Industry Canada Statement

This device complies with part 15 of the FCC rules. Operation of this device is subject to the following two conditions: (1) This device may not cause harmful interference, and (2) This device must accept any interference, including interference that may cause undesired operation.

NOTE: This equipment has been tested and found to comply with the limits for a Class B digital device, pursuant to Part 15 of the FCC Rules. These limits are designed to provide reasonable protection against harmful interference in a residential installation. This equipment generates, uses and can radiate radio frequency energy and, if not installed and used in accordance with the instructions, may cause harmful interference to radio communications. However, there is no guarantee that interference will not occur in a particular installation. If this equipment does cause harmful interference to radio or television reception, which can be determined by turning the equipment off and on, the user is encouraged to try to correct the interference by one or more of the following measures:

- Reorient or relocate the receiving antenna or device.
- Increase the separation between the equipment and receiver.
- Connect the equipment into an outlet on a circuit different from that to which the receiver is connected.
- Consult the dealer or an experienced radio/TV technician for help.

NOTICE—Changes or modifications not expressly approved by Intermatic Inc., could void the user's authority to operate the equipment. THE term "IC" before the radio certification number only signifies that Industry Canada technical specifications were met.

Limited Six-Year Warranty

If within six (6) years from the date of purchase, this product fails due to a defect in material or workmanship, Intermatic Incorporated will repair or replace it, at its sole option, free of charge. This warranty is extended to the original household purchaser only and is not transferable. This warranty does not apply to: (a) damage to units caused by accident, dropping or abuse in handling, acts of God or any negligent use; (b) units which have been subject to unauthorized repair, opened, taken apart or otherwise modified; (c) units not used in accordance with instructions; (d) damages exceeding the cost of the product; (e) sealed lamps and/or lamp bulbs, LED's and batteries; (f) the finish on any portion of the product, such as surface and/or weathering, as this is considered normal wear and tear; (g) transit damage, initial installation costs, removal costs, or reinstallation costs.

INTERMATIC INCORPORATED WILL NOT BE LIABLE FOR INCIDENTAL OR CONSEQUENTIAL DAMAGES. SOME STATES DO NOT ALLOW THE EXCLUSION OR LIMITATION OF INCIDENTAL OR CONSEQUENTIAL DAMAGES, SO THE ABOVE LIMITATION OR EXCLUSION MAY NOT APPLY TO YOU. THIS WARRANTY IS IN LIEU OF ALL OTHER EXPRESS OR IMPLIED WARRANTIES. ALL IMPLIED WARRANTIES, INCLUDING THE WARRANTY OF MERCHANTABILITY AND THE WARRANTY OF FITNESS FOR A PARTICULAR PURPOSE, ARE HEREBY MODIFIED TO EXIST ONLY AS CONTAINED IN THIS LIMITED WARRANTY, AND SHALL BE OF THE SAME DURATION AS THE WARRANTY PERIOD STATED ABOVE. SOME STATES DO NOT ALLOW LIMITATIONS ON THE DURATION OF AN IMPLIED WARRANTY, SO THE ABOVE LIMITATION MAY NOT APPLY TO YOU.

This warranty service is available by either (a) returning the product to the dealer from whom the unit was purchased, or (b) mailing the product, along with proof of purchase, postage prepaid to the authorized service center listed below. This warranty is made by: Intermatic Incorporated/After Sales Service/7777 Winn Rd., Spring Grove, Illinois 60081-9698/815-675-7000 <http://www.homesettings.com> Please be sure to wrap the product securely to avoid shipping damage.

INTERMATIC INCORPORATED
SPRING GROVE, ILLINOIS 60081-9698

158HA13315

INTERMATIC®



WARNING

- **Electrical shock hazard. Risk of injury or death. Remove electrical power at service panel before installing.**
- **Follow local electrical codes during installation.**
- **For indoor use only.**

Before installing, make sure that you...

- **Understand basic wiring principles and techniques (IF NOT, USE A QUALIFIED ELECTRICIAN FOR THIS INSTALLATION.)**
- **Can interpret wiring diagrams**
- **Have circuit-wiring experience**
- **Read all instructions and documentation and save for future reference**
- **Are prepared to test your work, making sure you have wired the receptacle according to your local electrical code**

Thank you for purchasing an Intermatic HomeSettings device

With HomeSettings devices, you can reliably and remotely control your lighting and appliances. The outstanding features of the HomeSettings HA14 600W In-Wall Dimmer Switch include:

- Feedback that will allow you to see whether your device has received the **ON/OFF/DIM** signal.
- Wireless signal reliability — HomeSettings products have a special feature that virtually guarantees that wireless signals are received.
- Manual override.
- Can be used with decorator-style wall plates (not included)
- Compatible with multiple location **ON/OFF** control using conventional 3-way or 4-way wiring devices.

Because the HA14 In-Wall Dimmer is a Z-Wave™ device, it is compatible with any HomeSettings network, other Z-Wave networks, and all HomeSettings or other devices displaying the Z-Wave logo, regardless of manufacturer.

Each module in a Z-Wave network communicates with every other module, acting as a "repeater" and routing your commands to their destination by the most reliable pathway. When Z-Wave devices (regardless of manufacturer) are installed throughout the house, signals are automatically routed around obstacles or dead spots, strengthening the network as more devices are added.



This product is compatible with other Z-Wave™ enabled products

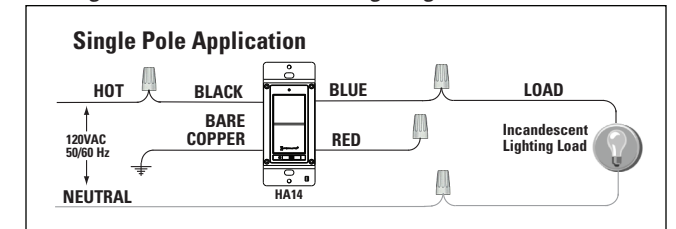
- **To manually turn ON the light, press and release the top rocker.**
- **To manually turn OFF the light, press and release the bottom rocker.**
- **To manually DIM the light, press and hold the top or bottom rocker.**

MODEL HA14

600 Watt In-Wall Dimmer Installation and Programming Instructions

1 – Wire and Install the HA14 In-Wall Dimmer

The most basic installation procedure is to use the HA14 in a Single Pole application—a circuit where a single switch controls a light, as shown in the wiring diagram below.



Other installation diagrams are shown on the next page.

1. Turn off power at the service panel by **REMOVING THE CORRECT FUSE** or **TURNING THE CIRCUIT BREAKER OFF**.

2. Remove existing wall switch from the box if necessary.
3. Trim building wires to 7/16".

4. Connect the **BLACK** wire of the HA14 to the hot building wire (the wire leading to the circuit breaker or fuse box), using a twist connector (provided).

NOTE: Twist connectors provided are suitable for **copper wire only**. For aluminum wire, consult an electrician.

NOTE: Insert wires straight into twist connector, then twist clockwise. Make sure all twist connectors are tight. Secure each twist connector with electrical tape. Make sure no bare wire shows below the wire connector.

5. Connect the **BLUE** wire of the HA14 to the load wire, using a twist connector (provided).

6. Connect the ground wire from the box to the bare copper wire on the HA14 In-Wall Dimmer. If there is no ground wire, ground the HA14 unit to the box. If the box is plastic, connect the bare copper wire to ground as supplied or contact an electrician.

7. Remove the semi-stripped end of the **RED** wire and apply the twist connector to this wire. The **RED** wire is not used in the single-pole application.

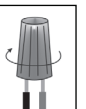
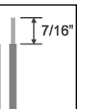
8. Tuck wires into wall box leaving room for the HA14 unit.

9. Using screws provided, mount the HA14 unit to the wall box, then install the decorator wall plate (not provided).

10. Turn power back on at the service panel.

NOTE: Before operating the switch, check to make sure the small switch below the rocker is in the **ON** or left position. A vertical-line **ON** symbol should be visible next to the switch, as shown (right, top).

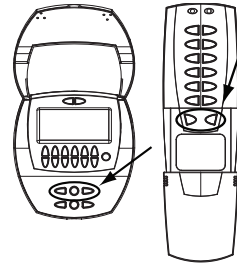
NOTE: When changing a light bulb, slide the switch to **OFF** or right position, with the **"O"** **OFF** symbol visible, as shown (right, bottom). This prevents chance of electric shock during the bulb change. When finished, slide the switch back to the **ON** or left position, again showing the vertical-line **ON** symbol.



2 – INCLUDE the In-Wall Dimmer in your Network

After hard-wiring the HA14 into place, the device is ready to join your HomeSettings network—or any network that supports Z-Wave™ devices—through a process called INCLUSION.

- Put the controller into INCLUSION mode. On the HA07 Master Controller or the HA09 Handy Controller, press and release the **INCLUDE** button. For other manufacturers' controllers, follow the instructions provided by the manufacturer.
- Press and release the top or bottom **ROCKER** button of the HA14 In-Wall Dimmer. If the inclusion is successful:
 - The HA07 screen will display **SUCCESSFUL**.
 - The HA09 will show a solid **GREEN** light for 2 seconds.



If the screen displays **NOT SUCCESSFUL** or the light is **RED**, the inclusion has failed. Try again. If the procedure continues to fail, contact Intermatic Customer Service.

3 – ASSOCIATE the In-Wall Dimmer with a Control Channel

After including your HA14 In-Wall Dimmer Switch with your HomeSettings network, you must associate it with a specific control channel (or button) so you can operate it by remote control. For a non-HomeSettings network, follow controller instructions provided by the manufacturer.

- Decide which pair of **ON/OFF** buttons you want to use to control the In-Wall Dimmer. Each pair represents a channel.
- Press and hold (at the same time) both **ON** and **OFF** buttons on the HA07 Master Controller or the HA09 Handy Controller. After about 3 seconds:
 - The Master Controller screen will display **LEARN**.
 - The Handy Controller lights will rapidly flash **GREEN** and **RED** at the same time.
- Release the **ON** and **OFF** buttons on the controller.
- Press and hold the **INCLUDE** button on the Master Controller or the Handy Controller
 - The Master Controller screen will display **INCL**.
 - The Handy Controller will show a solid **GREEN** light only.
- While still holding the **INCLUDE** button, press the top or bottom **ROCKER** button on the In-Wall Dimmer to adjust the light to the desired level.
- Release the **INCLUDE** button. If the association is successful:
 - The Master Controller screen will display **SUCCESSFUL**.
 - The Handy Controller **GREEN** light will simply turn off.
- Test the channel you have just programmed by pressing its **ON** and **OFF** buttons. The light should power **ON** or **OFF** at the level you have set.

If the screen displays **NOT SUCCESSFUL** or the light is **RED**, the association has failed. Try again. If the procedure continues to fail, contact Intermatic Customer Service.

Optional: EXCLUDE the In-Wall Dimmer from your Network

If necessary, you can delete the HA14 In-Wall Dimmer Switch from your HomeSettings network—or any network that supports Z-Wave devices—through a process called EXCLUSION.

- Put the controller into EXCLUSION mode. On the HA07 Master Controller or the HA09 Handy Controller, press and release the **DELETE** button. For other manufacturers' controllers, follow the instructions provided by the manufacturer.
 - Press and release the top or bottom **ROCKER** button of the HA14 In-Wall Dimmer. If the exclusion is successful:
 - The HA07 screen will display **SUCCESSFUL**.
 - The HA09 will show a solid **GREEN** light for 2 seconds.
- If the screen displays **NOT SUCCESSFUL** or the light is **RED**, the exclusion has failed. Try again. If the procedure continues to fail, contact Intermatic Customer Service.

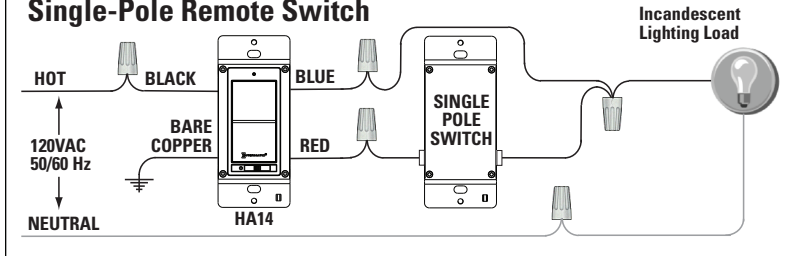
Technical Information

- For control of permanently installed incandescent lamp fixtures only
- Ratings: 600 Watts tungsten, 40 Watts minimum
120 VAC, 50/60 Hz
- Derating: 500 Watts Double Gang, 400 Watts Triple Gang
- Operating Temperature Range: 32°F to 104°F / 0°C to 40°C
- Radio Operating Frequency: 908.42 MHz @ 9.6 kbps
908.40 MHz @ 40 kbps
- RF (wireless) Range: 100 ft. under normal operating conditions
- Made in China

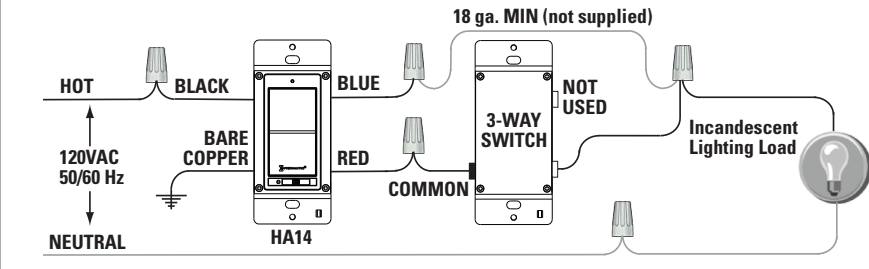
Our products are constantly evolving. To see if advanced functionality is possible with your product, look it up at www.homesettings.com.

Additional Wiring and Installation Diagrams

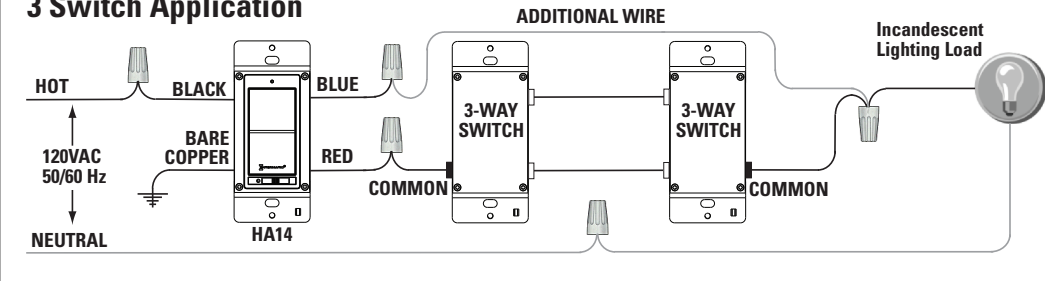
2 Switch/3-way Application with Single-Pole Remote Switch



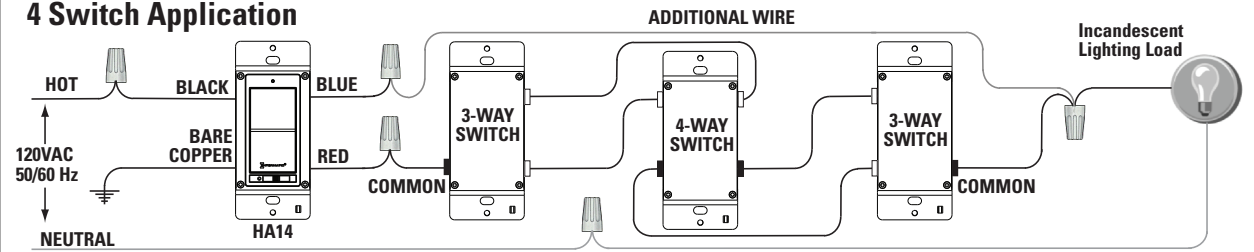
2 Switch / 3-way Application with 3-way Remote Switch



3 Switch Application



4 Switch Application



Multi-Way Application

