



Intermec



Quick Start Guide

**CV60 Vehicle
Mount Computer**

Intermec Technologies Corporation
Worldwide Headquarters
6001 36th Ave.W.
Everett, WA 98203
U.S.A.

Technical Communications
550 Second Street SE
Cedar Rapids, IA 52401
U.S.A.

www.intermec.com

The information contained herein is provided solely for the purpose of allowing customers to operate and service Intermec-manufactured equipment and is not to be released, reproduced, or used for any other purpose without written permission of Intermec Technologies Corporation.

Information and specifications contained in this document are subject to change without prior notice and do not represent a commitment on the part of Intermec Technologies Corporation.

© 2003-2006 by Intermec Technologies Corporation. All rights reserved.

The word Intermec, the Intermec logo, Norand, ArciTech, Beverage Routebook, CrossBar, dcBrowser, Duratherm, EasyADC, EasyCoder, EasySet, Fingerprint, i-gistics, INCA (under license), Intellitag, Intellitag Gen2, JANUS, LabelShop, MobileLAN, Picolink, Ready-to-Work, RoutePower, Sabre, ScanPlus, ShopScan, Smart Mobile Computing, TE 2000, Trakker Antares, and Vista Powered are either trademarks or registered trademarks of Intermec Technologies Corporation.

There are U.S. and foreign patents as well as U.S. and foreign patent applications pending.

Contents

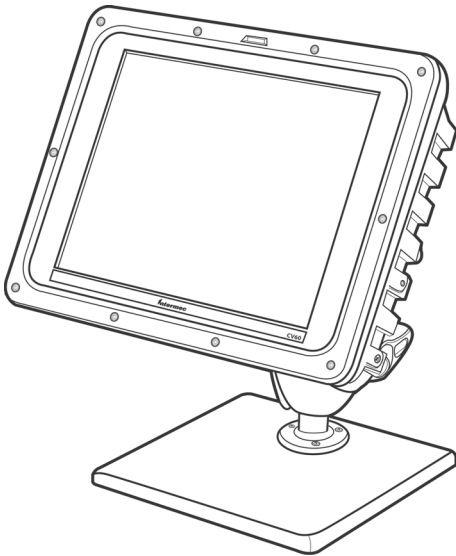
CV60 Vehicle Mount Computer	1
Unpacking the CV60 Computer	1
Locating the CV60 Computer Ports	2
Attaching an External Antenna	3
Attaching a Cordless Bluetooth Scanner	3
Windows CE .NET	4
Windows XP/XPE	5
Connecting to Other Serial Devices	6
CV60 Computer Setup	6
Device Configuration	7
Connecting to the CV60 (Windows CE)	7
Specifications	8
CV60 Hardware Features	8
Processor/Memory/Storage	9
System Software	9
Power System	9
Wired Connectivity	9
Wireless Connectivity	9
Peripherals/Accessories	9
Troubleshooting	10

CV60 Vehicle Mount Computer

The CV60 Computer is a rugged PC computing device consisting of a 12.1-inch color, SVGA LCD display with touch screen for data input and menu navigation.

Communication options include connectivity through two RS-232 serial ports, two USB ports (host), and Ethernet Wireless network connectivity is enabled through multiple LAN radio options.

Peripherals supported include PS/2 keyboard, USB mouse, external headset, wired RS-232 scanners, wireless printers, and USB data recovery drives.



CV60 Vehicle Mount Computer with optional desk mount.

Unpacking the CV60 Computer

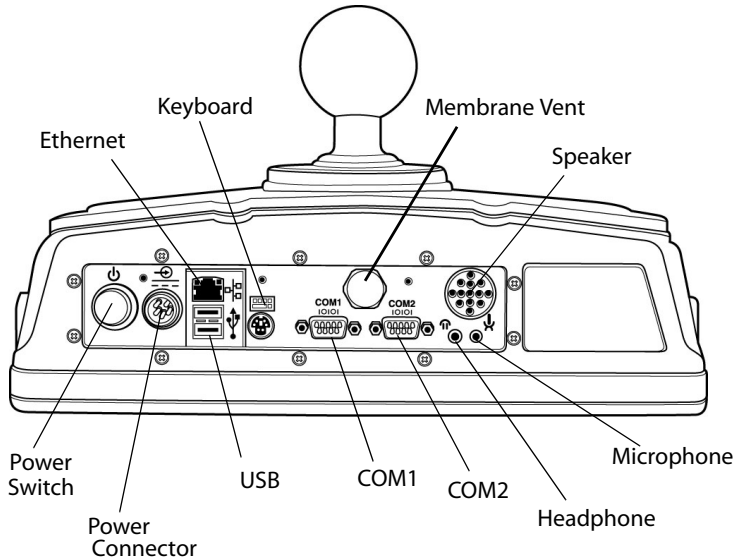
When removing the CV60 Computer from its box, save the box and shipping material in case you need to ship or store it. Check the contents of the box against the invoice for completeness and contact your local Intermec representative if there is a problem.

The CV60 shipping box contains:

- CV60 Vehicle Mount Computer (P/N: 245-287-10X)
- Documentation (P/N: 930-162-001)

Locating the CV60 Computer Ports

You connect power, a keyboard, scanner, and RS-232 serial devices to the ports that are located on the bottom panel of the CV60 Computer.



COM1

Use this port to connect the CV60 Computer to other RS-232 devices, such as PCs, scanners, scales, and printers, using an RS-232 null-modem adapter cable. The RS-232 null modem cable is an accessory, which is sold and ordered separately.

COM2

Use this port to connect the CV60 Computer to other RS-232 devices, such as PCs, scales, and printers, using an RS-232 null-modem adapter cable. The RS-232 null modem cable is an accessory, which is sold and ordered separately.

The CV60 Computer supports these Intermec scanning devices:

- Intermec 1553 Laser Scanners
- Intermec SF51/SX51 Cordless Bluetooth Scanners

Power Supply Connector

This connector provides power to the CV60 Computer to one of the DC power supply kits (6-96 VDC) or to connect the AC power supply when operating the CV60 Computer from the desktop mounting stand. You must have a power supply connected to operate the CV60 Computer.

Keyboard Connector

Use this connector to connect the CV60 keyboard or a PC-PS/2 keyboard to the CV60 Computer using the CV60 keyboard adapter cable. The keyboard and keyboard adapter cable are accessories, which are sold and ordered separately.

USB Connectors

Use these connectors to attach USB serial peripheral devices such as keyboards, mice, hubs to the CV60 Computer. The CV60 Computer supports USB version 1.1.

Ethernet Connector

Use this connector for connection to a 10baseT/100baseT Ethernet LAN.

Attaching an External Antenna

You can use an Intermec-approved accessory antenna to improve RF communications.



Note: See your Intermec representative for information about the CV60 Computer and a list of Intermec-approved accessory antennas for the CV60 Computer.

Attaching a Cordless Bluetooth Scanner

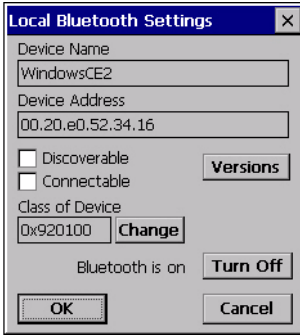
You can attach a scanner, such as the SF51 or SX51 Scanner, to scan and input bar code data. Use the accessory scanner cables to connect a scanning device.

- 1 Insert the scanner cable connector straight into the COM1 port on the CV60 Computer.
- 2 Use a small straight-slot screwdriver to tighten the two screws in the scanner cable connector and secure the cable to the CV60 Computer.
- 3 Attach the other end of the scanner cable to your scanner.

- 4 Make sure the cable is not pinched or rubbed by any moving parts on the vehicle.

Windows CE .NET

- 1 Enable Bluetooth™ settings by selecting **Start > Settings > Control Panel > Local Bluetooth**. Tap **Turn On** if you see the “Bluetooth is off” message, check **Connectable**, then tap **OK**.



- 2 Select **Start > Run**, then browse to **Program Files > Intermec > Network > BluetoothScannerWizard.exe** to associate your scanner with the CV60 Computer.
- 3 Tap **Add Device**, then tap **Quick Connect (Incoming)** to have the Connection Wizard find your scanner.



- 4 Scan the bar code, then tap **Finish** to exit. After association, enter PIN “0000” in the Authentication dialog box.



Note: If you have any problems scanning the bar code shown on the display, you can also scan the Bluetooth association bar code label on the side of the CV60 Computer.

Windows XP/XPE

With the Bluetooth Scanner Wizard, you can connect up to seven scanners using device search, manual entry, Quick Connect bar code scan, or choose from previously used devices.

From the CV60 Computer, select **Start > My Computer**, browse to the “C:\Program Files\Intermec\Bluetooth Scanner Wizard” folder, double-click the **BluetoothScannerWizardFull** icon.



BluetoothScannerWizardFull

- 1 ,From the Bluetooth Scanner Wizard, tap **Add Scanner**.



- 2 Select **Quick Connect (Incoming)**, then tap **Next**:



- 3 Scan the bar code with your scanner, then tap **Finish** to close the wizard.



Connecting to Other Serial Devices

Use the CV60 Serial Port to transfer data between the CV60 Computer and a serial device. There are two serial ports (COM1 and COM2) that support RS-232 communications. Use COM1 and the accessory RS-232 null-modem adapter cable (P/N: 226-106-00X) to connect to a serial device, such as a printer or scale.

CV60 Computer Setup

Your CV60 Computer may be loaded with one of three operating systems, installed at the factory: Windows XP Professional, Windows XP Embedded, or Windows CE. NET.

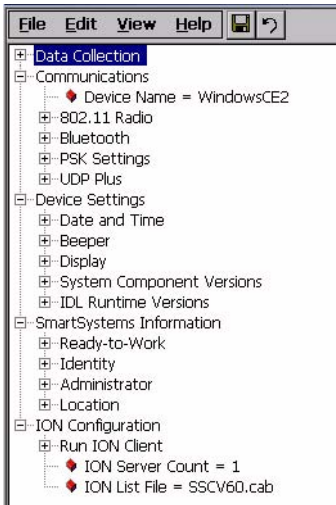
Device Configuration

Configure settings for the CV60 Computer using the Intermec Settings applet. Tap **Start > Settings > Control Panel**, then tap the **Intermec Settings** icon.



Intermec
Settings

Tap on folders to select and make setting changes. You will be prompted to save any changes.

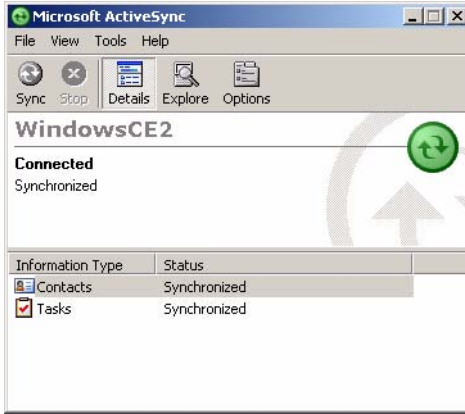


Connecting to the CV60 (Windows CE)

- 1 Connect the CV60 Computer to your desktop PC using an ActiveSync cable. Install ActiveSync on your desktop PC by downloading it from the Microsoft web site.
- 2 Tap the **ActiveSync** desktop icon to start communicating with your desktop PC. Follow the onscreen instructions for establishing a partnership.



- 3 When the partnership is established, the device name of your CV60 Computer appears in the ActiveSync window on your desktop PC.



Specifications

CV60 Hardware Features

Physical

- Weight: 5 kg (11.02 lbs) for base unit

Size

- Height: 26 cm (9.44")
- Width: 34 cm (13.38")
- Depth: 9.5 cm (3.74")

Environmental

- IP65 Compliant
- Recommended Operating Temperature Range (Solid State Drive): -20° C to 50° C (-4° to 122° F)
- Recommended Operating Temperature Range (Rotating Drive): 0° C to 50° C (32° to 122° F)
- Recommended Operating Temperature Range (Heater Option): -30° C to 50° C (-22° to 122° F)
- Recommended Storage Temperature Range: -30° C to 70° C (-22° to 158° F)

Processor/Memory/Storage

- Intel P-III 800Mhz embedded processor
- 256MB base memory with upgrade to 512MB SDRAM
- 512MB FLASH
- Removable IDE rotating media or solid state drive or PC Card solid state memory
- Resistive touch screen
- 12.1 Inch, Color TFT 800 x 600 SVGA

System Software

- Windows XP Professional
- Windows XP Embedded
- Windows CE .NET

Power System

- 6-96 VDC DC/DC converters
- AC/DC adapter supporting international power requirements
- Optional uninterruptible power supply

Wired Connectivity

- Two RS-232 ports, supporting external tethered scanners
- 2 USB host ports
- 10BaseT/100BaseT Ethernet

Wireless Connectivity

- 802.11b/g 2.4 GHz (Direct Sequence Spectrum)
- Bluetooth radio for cordless accessories

Peripherals/Accessories

- External alpha/numeric keyboard, PS/2
- Tethered bar code scanners
- Mounting brackets to meet a wide range of vehicles

Intermec External Bar Code Scanners

- Sabre (1553)
- SF51/SX51/SR61/other similar Bluetooth Interface Scanners

External Keyboards

- PS/2 interface with locking connector

External Mouse

- Off-the-shelf USB mouse

Audio

- Internal Speaker (mono)
- Stereo Line out/Headset Jack
- External microphone jack allows voice recording. (Mutes internal speaker when connected.)

Troubleshooting

CV60 Computer does not respond to applying power.

Check to ensure that your CV60 Computer is connected to the correct power source.

CV60 will not turn *on* when the On/Off button is pressed.

- Check the power supply connectors and cabling from the CV60 Computer.
- Check the connections from the dc power supply and verify that the green LED is lit.

CV60 shuts down during operation.

- Check the power supply cable(s) for intermittent operation by moving or jiggling it.
- Check to see if the green LED on the back of the power supply is flickering or blinking at the moment the CV60 Computer shuts down.
- Check your installation, cables, etc. Flickering LEDs indicate the power supply has encountered an over-voltage, over-current, or over-temperature event. See the *Vehicle Power Supply Installation Guide* (P/N: 932-003-001) for more information.

CV60 does not turn *off*

- May not turn *off* when it is processing data.
- In the event that your vehicle mount computer locks up, hold the on/off button down for approximately 4-5 seconds. This causes an emergency forced shut down of the computer.
- Remove the DC power input and wait 20-30 seconds before reconnecting.



Worldwide Headquarters

6001 36th Avenue West
Everett, Washington 98203
U.S.A.

tel 425.348.2600

fax 425.355.9551

www.intermec.com

CV60 Vehicle Mount Computer Quick Start Guide



P/N 930-162-001