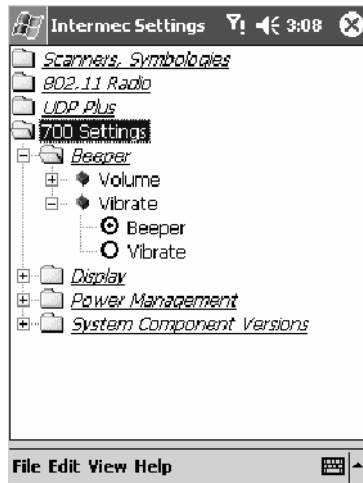




**Intermec
Settings**

For Units With PSM Build 3.00 or Newer

Do the following to enable the vibrator for the 700 Color Computer. Tap **Start > Settings > the System tab > the Intermec Settings** icon. Tap the **700 Settings** folder twice, tap (+) to expand the **Beeper** folder, then tap (+) to expand the **Vibrate** option. Select an item, then tap (+) to close this option.



Note: Information about the settings you can configure with the Intermec Settings control panel applet is described in the *Intermec Computer Command Reference Manual*. The online manual is available from the Intermec web site at www.intermec.com

Wireless Network Support

Radios are installed at the factory and cannot be installed by a user. The 700 Color Computer must be serviced to install or replace radios. Contact your Intermec representative for more information. See Chapter 4, “*Network Support*” for information about supported radios.



Note: Changes or modifications not expressly approved by the party responsible for compliance could void the user’s authority to operate the equipment.