


**TOSHIBA**  
Leading Innovation >>>

**Satellite L3xW-B  
Satellite Click L3xW-B  
Series  
User Information Guide**



## Documentation

A comprehensive online user's manual is preinstalled on your computer equipping with a Windows® operating system. You can access it in one of the following ways:

- Move the mouse pointer and then click the  icon in the lower left of the Start screen to get to the **Apps view**, and then click **Help and Support -> TOSHIBA Help**.
- Click the **Desktop** tile from the Start screen and press the **F1** key, and then click **TOSHIBA Help**.

Refer to the online user's manual for detailed information and instructions concerning each item in this manual.

The online user's manual installed on your computer is the latest available at the production time. Please check <http://www.toshiba.co.jp/worldwide/> for the most up to date online user's manual.

## Safety Icons

Safety icons are used in this manual to bring important information to your attention. Each type of message is identified as shown below.



*Indicates a potentially hazardous situation, which could result in death or serious injury, if you do not follow instructions.*



*A caution informs you that improper use of equipment or failure to follow instructions may cause data loss, equipment damage, or may result in minor or moderate injury.*



*Please read. A note is a hint or advice that helps you make best use of your equipment.*

## Dual Operating Mode

Your computer is provided with a TOSHIBA Keyboard Dock and support dual operating mode - your computer can be easily converted from a tablet PC to a laptop PC. Throughout this manual, operating your computer as a tablet PC and a laptop PC is called "tablet mode" and "laptop mode" respectively.

## Quick Start

### Unpack the box

1. Remove the components and computer from the box. Save the packing materials in case you need them later.
2. Remove the documentation package for important information.



*The computer case can become hot! Avoid prolonged contact to prevent heat injury to skin. Read the enclosed **Instruction Manual for Safety and Comfort**.*



- *Certain computer cases are designed to accommodate all possible configurations for an entire product series. Your selected model may not have all the features and specifications corresponding to all of the icons or switches shown on the computer case.*
- *All product specifications, configurations, prices, system/component/ options availability are all subject to change without notice.*

### Check the components

#### Your computer comes with:

- AC adaptor and power cord (2-pin plug or 3-pin plug)
- TOSHIBA Keyboard Dock (docked with the computer)
- Cleaning cloth (provided with some models)
- Several documents, including the TOSHIBA **Instruction Manual for Safety and Comfort**. It may also ship with documentation for other software that may be pre-installed on your computer. Some software may differ from its retail version (if available), and may not include user manuals or all program functionality.

If any of the items are missing or damaged, contact your dealer immediately.

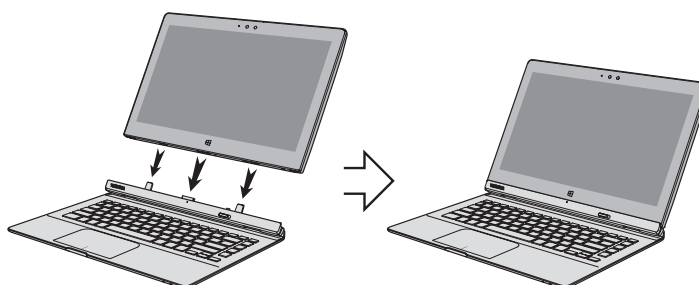
## Using your computer for the first time

### Connecting TOSHIBA Keyboard Dock

TOSHIBA Keyboard Dock can turn your computer into a laptop for extensibility including a physical keyboard.

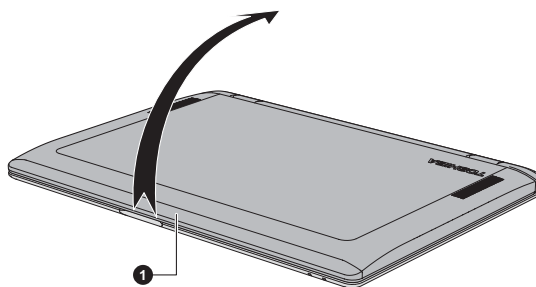
To use the computer in laptop mode, you need to connect TOSHIBA Keyboard Dock to the computer by following the steps below:

1. Hold the computer with two hands on both the left and right sides.
2. Align the docking interface located on the computer with the docking connector on the keyboard dock.
3. Press down the computer until it clicks into place.  
The docking connector on the keyboard dock engages the docking interface on the computer.



When you are operating in laptop mode, the computer body can be opened to a wide range of angles for optimal viewing.

While holding down the palm rest with one hand so that the body of the keyboard dock is not raised, slowly lift the computer body - this will allow the angle of the display screen to be adjusted to provide optimum clarity.



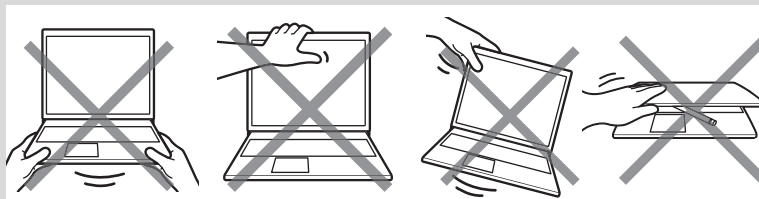
1. Computer body




*Use reasonable care when opening and closing computer body. Opening it vigorously or slamming it shut could damage the computer.*

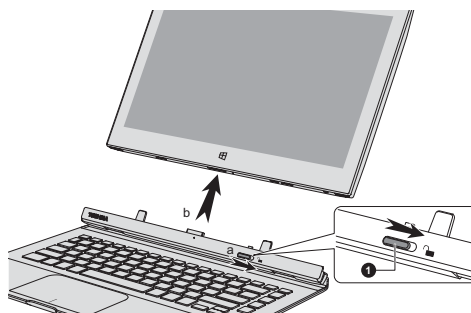


- *Be careful not to open the computer body too far as this could put stress on the hinges and cause damage.*
- *Please close the computer body when you move or are carrying the computer.*
- *Do not lift the computer by the palm rest on the keyboard dock. Failure to follow this instruction may cause damage to the computer or result in minor injury.*
- *Do not press or push with excess force on the display screen, otherwise the computer body may become unsteady and possibly fall over.*
- *Do not lift the computer by the display screen.*
- *Do not close the computer with pens or any other objects left in between the computer and the keyboard dock.*
- *Please be careful not to hurt your fingers when you are docking the computer to the keyboard dock.*
- *Never remove the computer without unlocking by the release latch, otherwise it may cause damage to the computer.*
- *Never turn the computer holder without the computer docked, otherwise it may cause damage or possibly result in mechanical malfunction.*



To disconnect and remove the computer from the keyboard dock, follow the steps below:

1. Disconnect and remove all peripheral devices and cables connected to the computer.
2. Click the icon(  ) in the Windows Taskbar and then click **Eject Docking Station** to safely disconnect the dock.
3. Slide the **Release latch** to the left (unlock position) and then slowly lift the computer to release it from the computer holder and completely off the keyboard dock. (a, b)

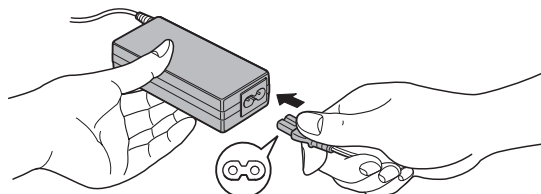


1. Release latch

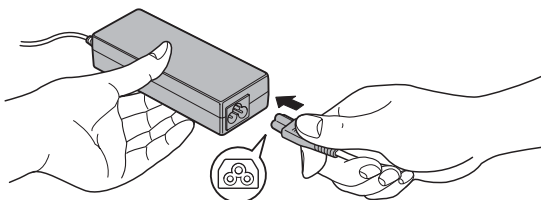
**Connecting the AC adaptor**

1. Connect the power cord to the AC adaptor.

*The AC adaptor (2-pin plug)*



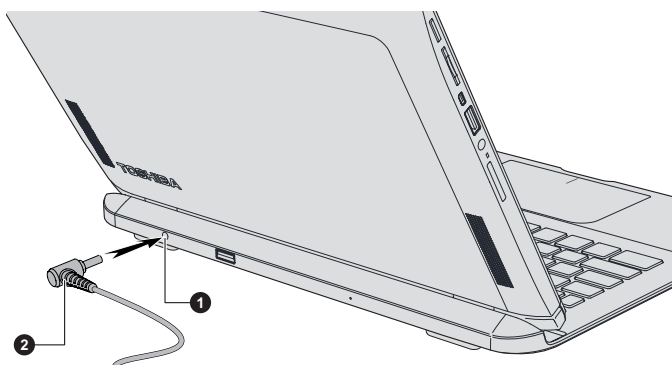
*The AC adaptor (3-pin plug)*



*Either a 2-pin or 3-pin adaptor/cord will be included with the computer depending on the model.*

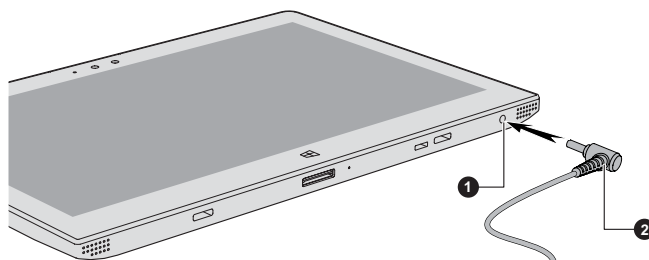
2. Connect the AC adaptor's DC output plug to the DC IN 19V jack.

*Connecting the DC output plug to the computer (laptop mode)*





*Connecting the DC output plug to the computer (tablet mode)*



1. DC IN 19V jack

2. DC output plug

3. Plug the power cord into a live wall outlet - the **DC IN/Battery** indicator should glow.

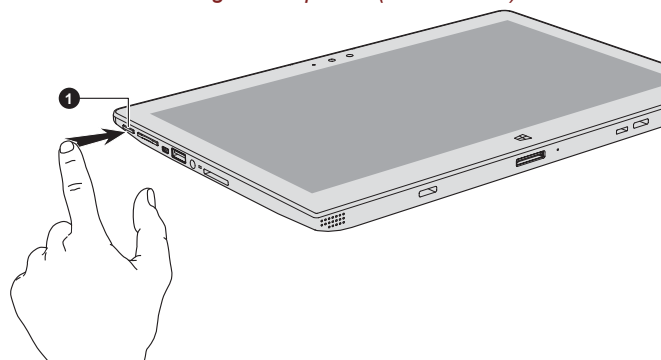
***Turning on the power***

Press the computer's power button to turn on the computer.

*Turning on the power (laptop mode)*



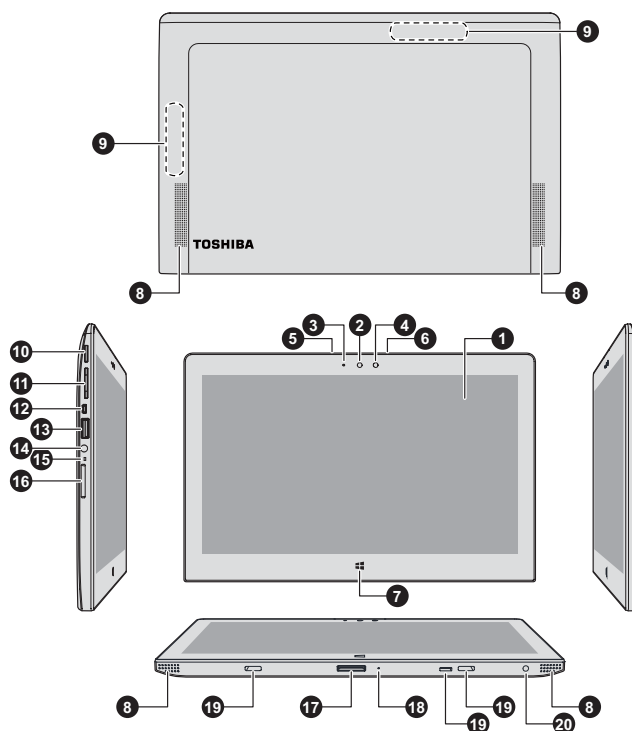
*Turning on the power (tablet mode)*



1. Power button

**Quick Tour**

**The computer (tablet mode)**



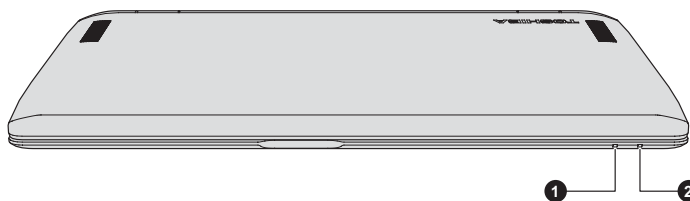
- |  |   |
|--|---|
| 1. Display screen                              | 11. Volume up/down button               |
| 2. Web Camera                                  | 12. HDMI(micro) port                    |
| 3. Web Camera LED                              | 13. Universal Serial Bus (USB 2.0) port |
| 4. Ambient light sensor                        | 14. Headphone/Microphone combo jack     |
| 5. Microphone                                  | 15. DC IN/Battery indicator             |
| 6. Microphone*                                 | 16. Memory media slot                   |
| 7. Windows button                              | 17. Docking interface                   |
| 8. Stereo speakers                             | 18. Force shutdown hole                 |
| 9. Wireless communication antennas (not shown) | 19. Hook holes                          |
| 10. Power button                               | 20. DC IN 19V jack                      |

\* Provided with some models.

Product appearance depends on the model you purchased.

## The computer (laptop mode)

### Front view

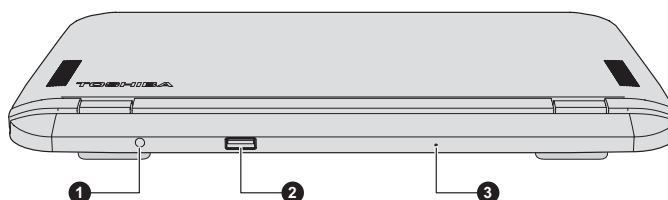


1. Power indicator

2. Wireless communication indicator

Product appearance depends on the model you purchased.

### Back view



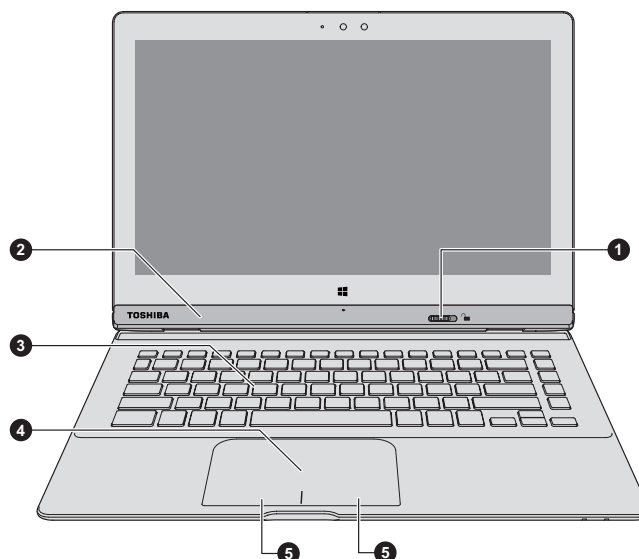
1. DC IN 19V jack

2. Universal Serial Bus (USB 3.0) port

3. Force shutdown hole

Product appearance depends on the model you purchased.

**From view with display open**



- |                              |                    |
|------------------------------|--------------------|
| 1. Release latch             | 2. Computer holder |
| 3. Keyboard                  | 4. Touch Pad       |
| 5. Touch Pad control buttons |                    |

Product appearance depends on the model you purchased.

## Copyright

© 2014 by TOSHIBA Corporation. All rights reserved. Under the copyright laws, this manual cannot be reproduced in any form without the prior written permission of TOSHIBA. No patent liability is assumed, with respect to the use of the information contained herein.

First edition February 2014

Copyright authority for music, movies, computer programs, databases and other intellectual property covered by copyright laws belongs to the author or to the copyright owner. Copyrighted material can be reproduced only for personal use or use within the home. Any other use beyond that stipulated above (including conversion to digital format, alteration, transfer of copied material and distribution on a network) without the permission of the copyright owner is a violation of copyright or author's rights and is subject to civil damages or criminal action. Please comply with copyright laws in making any reproduction from this manual.

## Disclaimer

This manual has been validated and reviewed for accuracy. The instructions and descriptions it contains are accurate for your computer at the time of this manual's production. However, succeeding computers and manuals are subject to change without notice. TOSHIBA assumes no liability for damages incurred directly or indirectly from errors, omissions or discrepancies between the computer and the manual.

## Trademarks

Intel, Intel SpeedStep, Intel Core and Centrino are trademarks or registered trademarks of Intel Corporation.

Windows, Microsoft and Windows logo are registered trademarks of Microsoft Corporation.

The Bluetooth® word mark and logos are registered trademarks owned by Bluetooth SIG, Inc. and any use of such marks by Toshiba Corporation and its affiliates is under license.

The terms HDMI and HDMI High-Definition Multimedia Interface, and the HDMI Logo are trademarks or registered trademarks of HDMI Licensing LLC in the United States and other countries.

ATHEROS is a trademark of Qualcomm Atheros, Inc., registered in the United States and other countries.

All other product names and service names in this manual may be trademarks or registered trademarks of their respective companies.

## EU Declaration of Conformity



This product is carrying the CE-Mark in accordance with the related European Directives. Responsible for CE-Marking is TOSHIBA EUROPE GMBH, Hammfelddamm 8, 41460 Neuss, Germany. The complete and official EU Declaration of Conformity can be found on TOSHIBA's web site <http://epps.toshiba-teg.com> on the Internet.

## Canadian regulatory information (Canada only)

This digital apparatus does not exceed the Class B limits for radio noise emissions from digital apparatus as set out in the Radio Interference Regulation of the Canadian Department of Communications.

Note that Canadian Department of Communications (DOC) regulations provide, that changes or modifications not expressly approved by TOSHIBA Corporation could void your authority to operate this equipment.

This Class B digital apparatus meets all requirements of the Canadian Interference-Causing Equipment Regulations.

Cet appareil numérique de la class B respecte toutes les exigences du Règlement sur le matériel brouilleur du Canada.

## Disposing of the computer and the computer's batteries

Contact an authorized TOSHIBA service provider for details regarding how to dispose of the computer and the batteries.

## ENERGY STAR® Program



Your Computer model may be ENERGY STAR® compliant. If the model you purchased is compliant, it is labeled with the ENERGY STAR logo on the computer and the following information applies.

TOSHIBA is a partner in the ENERGY STAR Program and has designed this computer to meet the latest ENERGY STAR guidelines for energy efficiency. Your computer ships with the power management options preset to a configuration that will provide the most

stable operating environment and optimum system performance for both AC power and battery modes.

To conserve energy, your computer is set to enter the low-power Sleep Mode which shuts down the system and display within 15 minutes of inactivity in AC power mode. TOSHIBA recommends that you leave this and other energy saving features active, so that your computer will operate at its maximum energy efficiency. You can wake the computer from Sleep Mode by pressing the power button.

Products that earn the ENERGY STAR prevent greenhouse gas emissions by meeting strict energy efficiency guidelines set by the US EPA and the EU Commission. According to the EPA, a computer meeting the new ENERGY STAR specifications will use between 20% and 50% less energy depending on how it is used.

Visit <http://www.eu-energystar.org> or <http://www.energystar.gov> for more information regarding the ENERGY STAR Program.

## Information for Wireless Devices

### Wireless Technology Interoperability

The Wireless LAN is compatible with other LAN systems Direct Sequence Spread Spectrum (DSSS) /Orthogonal Frequency Division Multiplexing (OFDM) radio technology, and is compliant to:

- The IEEE 802.11 Standard on Wireless LANs (Revision a/b/g/n or b/g/n or Revision a/b/g/n/ac), as defined and approved by the Institute of Electrical and Electronics Engineers.

Bluetooth® Modules are designed to be interoperable with any product with Bluetooth wireless technology that is based on Frequency Hopping Spread Spectrum (FHSS) radio technology, and is compliant to:

- Bluetooth Specification (depending on the model you purchased), as defined and approved by the Bluetooth Special Interest Group.
- Logo certification with Bluetooth wireless technology as defined by the Bluetooth Special interest Group.

This Bluetooth product is not compatible with devices using Bluetooth Version 1.0B specifications.



*The wireless devices have not completed verification of connection and operation with all devices which are using the Wireless LAN or Bluetooth radio technology.*

*Bluetooth and Wireless LAN devices operate within the same radio frequency range and may interfere with one another. If you use Bluetooth and Wireless LAN devices simultaneously, you may occasionally experience a less than optimal network performance or even lose your network connection.*

*If you should experience any such problem, immediately turn off either one of your Bluetooth or Wireless LAN.*

*Please visit <http://www.pc.support.global.toshiba.com>, if you have any questions about using Wireless LAN or Bluetooth Module.*

*In Europe visit <http://www.toshiba-europe.com/computers/tnt/bluetooth.htm>*

## Wireless Devices and your Health

Wireless products, like other radio devices, emit radio frequency electromagnetic energy. The level of energy emitted by Wireless products however is far much less than the electromagnetic energy emitted by wireless devices like for example mobile phones.

Because Wireless products operate within the guidelines found in radio frequency safety standards and recommendations, TOSHIBA believes Wireless products is safe for use by consumers. These standards and recommendations reflect the consensus of the scientific community and result from deliberations of panels and committees of scientists who continually review and interpret the extensive research literature.

In some situations or environments, the use of Wireless products may be restricted by the proprietor of the building or responsible representatives of the organization. These situations may for example include:

- Using the Wireless products equipment on board of airplanes, or
- In any other environment where the risk of interference to other devices or services is perceived or identified as harmful.

If you are uncertain of the policy that applies on the use of wireless devices in a specific organization or environment (e.g. airports), you are encouraged to ask for authorization to use the Wireless device prior to turning on the equipment.

## Radio Regulatory Information for Wireless LAN

The Wireless device must be installed and used in strict accordance with the manufacturer's instructions as described in the user documentation that comes with the product. This product complies with the following radio frequency and safety standards.

**Europe****Restrictions for Use of 2400.0-2483.5MHz Frequencies in Europe**

<b>France:</b>	Outdoor use limited to 10mW e.i.r.p. within the band 2454-2483.5MHz	Military Radiolocation use. Refarming of the 2.4GHz band has been ongoing in recent years to allow current relaxed regulation Full implementation planned 2012.
<b>Italy:</b>	-	For private use, a general authorization is required if WAS/ RLAN's are used outside own premises. For public use, a general authorization is required.
<b>Luxembourg:</b>	Implemented	General authorization required for network and service supply.
<b>Norway:</b>	Implemented	This subsection does not apply for the geographical area within a radius of 20 km from the centre of Ny-Alesund.
<b>Russian Federation:</b>	-	Only for indoor applications.

**Restrictions for Use of 5150-5350MHz Frequencies in Europe**

<b>Italy:</b>	-	For private use, a general authorization is required if WAS/ RLAN's are used outside own premises.
<b>Luxembourg:</b>	Implemented	General authorization required for network and service supply.
<b>Russian Federation:</b>	Limited	e.i.r.p 100mW. Permitted to use only for indoor applications, closed industrial and warehouse areas, and on board aircraft. <ol style="list-style-type: none"> <li>1. Permitted to use for local networks of aircraft crew service communications on board aircraft in area of the airport and at all stages of flight.</li> <li>2. Permitted to use for public wireless access local networks on board aircraft during a flight at the altitude not less than 3000m.</li> </ol>



**Restrictions for Use of 5470-5725MHz Frequencies in Europe**

<b>Italy:</b>	-	For private use, a general authorization is required if WAS/ RLAN's are used outside own premises.
<b>Luxembourg:</b>	Implemented	General authorization required for network and service supply.
<b>Russian Federation:</b>	Limited	e.i.r.p 100mW. Permitted to use only for indoor applications, closed industrial and warehouse areas, and on board aircraft. <ol style="list-style-type: none"> <li>1. Permitted to use for local networks of aircraft crew service communications on board aircraft in area of the airport and at all stages of flight.</li> <li>2. Permitted to use for public wireless access local networks on board aircraft during a flight at the altitude not less than 3000m.</li> </ol>

To remain in conformance with European spectrum usage laws for Wireless LAN operation, the above 2.4GHz and 5GHz channel limitations apply for outdoor usage. The user should use the wireless LAN utility to check the current channel of operation. If operation is occurring outside of the allowable frequencies for outdoor use, as listed above, the user must contact the applicable national spectrum regulator to request a license for outdoor operation.

**Canada - Industry Canada (IC)**

This device complies with RSS-210 of the Industry Canada Rules. Operation is subject to the following two conditions: (1) This device may not cause harmful interference, and (2) this device must accept any interference received, including interference that may cause undesired operation.

Ce dispositif est conforme à la norme CNR-210 d'Industrie Canada applicable aux appareils radio exempts de licence. Son fonctionnement est sujet aux deux conditions suivantes: (1) le dispositif ne doit pas produire de brouillage préjudiciable, et (2) ce dispositif doit accepter tout brouillage reçu, y compris un brouillage susceptible de provoquer un fonctionnement indésirable.

Les dispositifs fonctionnant dans la bande 5.15-5.25GHz sont réservés uniquement pour une utilisation à l'intérieur afin de réduire les risques de brouillage préjudiciable aux systèmes de satellites mobiles utilisant les mêmes canaux.

Les utilisateurs devraient aussi être avisés que les utilisateurs de radars de haute puissance sont désignés utilisateurs principaux (c.-à-d., qu'ils ont la priorité) pour les bandes 5.25-5.35GHz et 5.65-5.85GHz et que ces radars pourraient causer du brouillage et/ou des dommages aux dispositifs LAN-EL.

The term "IC" before the equipment certification number only signifies that the Industry Canada technical specifications were met.

## **USA-Federal Communications Commission (FCC)**

This equipment has been tested and found to comply with the limits for a Class B digital device, pursuant to Part 15 of FCC Rules. These limits are designed to provide reasonable protection against harmful interference in a residential installation.

## **Device Authorization**

This device obtains the Technical Regulation Conformity Certification and it belongs to the device class of radio equipment of low-power data communication system radio station stipulated in the Telecommunications Business Law of Japan.

The following restrictions apply:

- Do not disassemble or modify the device.
- Do not install the embedded wireless module into other device.

## **General Precautions**

TOSHIBA computers are designed to optimize safety, minimize strain and withstand the rigors of portability. However, certain precautions should be observed to further reduce the risk of personal injury or damage to the computer.

Be certain to read the general precautions below and to note the cautions included in the text of the manual.

### **Provide adequate ventilation**

Always make sure your computer and AC adaptor have adequate ventilation and are protected from overheating when the power is turned on or when an AC adaptor is connected to a power outlet (even if your computer is in Sleep Mode). In this condition, observe the following:

- Never cover your computer or AC adaptor with any object.
- Never place your computer or AC adaptor near a heat source, such as an electric blanket or heater.
- Never cover or block the air vents including those located at the base of the computer.
- Always operate your computer on a hard flat surface. Using your computer on a carpet or other soft material can block the vents.
- Always provide sufficient space around the computer.

Overheating your computer or AC adaptor could cause system failure, computer or AC adaptor damage or a fire, possibly resulting in serious injury.

### **Heat injury**

- Avoid prolonged physical contact with the computer. If the computer is used for long periods, its surface can become very warm. While the temperature will not feel hot to the touch, if you maintain physical contact with the computer for a long time, for example if you rest the computer on your lap or if you keep your hands on the palm rest, your skin might suffer a low-heat injury.

- If the computer has been used for a long time, avoid direct contact with the metal plate supporting the various interface ports as this can become hot.
- The surface of the AC adaptor can become hot when in use but this condition does not indicate a malfunction. If you need to transport the AC adaptor, you should disconnect it and let it cool before moving it.
- Do not lay the AC adaptor on a material that is sensitive to heat as the material could become damaged.

### **Pressure or impact damage**

Do not apply heavy pressure to the computer or subject it to any form of strong impact as this can damage the computer's components or otherwise cause it to malfunction.

3.

### **Instruction Manual for Safety and Comfort**

All important information on the safe and proper use of this computer is described in the enclosed **Instruction Manual for Safety and Comfort**. Be sure to read it before using the computer.

## **TOSHIBA Support**

If you require any additional help using your computer or if you are having problems operating the computer, you may need to contact TOSHIBA for additional technical assistance.

### **Before you call**

Some problems you experience may be related to software or the operating system so it is important that you investigate other sources of assistance first. Before contacting TOSHIBA, try the following:

- Review troubleshooting sections in the documentation supplied with your software and/or peripheral devices.
- If a problem occurs when you are running software applications, consult the software documentation for troubleshooting suggestions and consider calling the software company's technical support department for assistance.
- Consult the reseller or dealer from where you purchased your computer and/or software - they are your best resource for current information and support.

### **TOSHIBA technical support**

If you are still unable to solve the problem and suspect that it is hardware related, visit TOSHIBA technical support website <http://www.toshiba.co.jp/worldwide/>.

## FEDERAL COMMUNICATIONS COMMISSION INTERFERENCE STATEMENT

This equipment has been tested and found to comply with the limits for a Class B digital device, pursuant to Part 15 of the FCC Rules. These limits are designed to provide reasonable protection against harmful interference in a residential installation. This equipment generates, uses and can radiate radio frequency energy and, if not installed and used in accordance with the instructions, may cause harmful interference to radio communications. However, there is no guarantee that interference will not occur in a particular installation. If this equipment does cause harmful interference to radio or television reception, which can be determined by turning the equipment off and on, the user is encouraged to try to correct the interference by one or more of the following measures:

- Reorient or relocate the receiving antenna.
- Increase the separation between the equipment and receiver.
- Connect the equipment into an outlet on a circuit different from that to which the receiver is connected.
- Consult the dealer or an experienced radio/TV technician for help.

### CAUTION:

Any changes or modifications not expressly approved by the party responsible for compliance could void the user's authority to operate the equipment.

This device complies with part 15 of the FCC Rules. Operation is subject to the following two conditions: (1) This device may not cause harmful interference, and (2) this device must accept any interference received, including interference that may cause undesired operation.

**GX1C0013F110**



Printed in China



**\*GX1C0013F110\***

**TOSHIBA**