

The Minerva 3023 is a dual mode wireless PCI Express Mini Card module, with highly efficient data speed which can provide all the wireless clients to freely connect through the network easily. With the dual standard capability, the wireless mini card network module offers unbeatable performance of data rate up to 3.6Mbps on HSDPA, WCDMA in Band I,II,V and EDGE / GPRS Quad-Band (850/900/1800/1900MHz), to support universal operation. It is also provide a special application like, circuit switched data (CS) and packed switch (PS) data as well.

Phonebook is a good tool for managing your contacts information and it could be automatically complied with each format like outlook 2000, outlook express as per your requirements.

We also allow you to entertain enjoying MMS by sending multimedia such as graphic photo, music, video to get fun together with.

Key Features:

- HSDPA PCI Express Mini Card which fits next generation's PC card standard adopted by NB.
- Quad-band GSM/GPRS/EDGE and tri-band UMTS/HSDPA enables global roaming.
- Data connection over GPRS/EDGE/UMTS/HSDPA network.
- Support most laptop OS used nowadays.

Package Contents:

- Instruction guide
- Utility CD

System Requirements:

- Genuine Intel® Pentium® III or Celeron® 1 GHz or equivalent AMD® processor or faster.
- Microsoft® Windows® XP Service Pack 2 (SP2).
- Intel, AMD or 100% compatible motherboard chipset.
- DirectX 9.0 or better.
- 128 MB RAM.
- 600 MB of free hard disk space.
- Graphics Card: VGA with at least 8Mb Memory.
- Available USB slot.
- CD-ROM/CD-RW or DVD-ROM drive required for software installation.
- Sound Card.

Specification

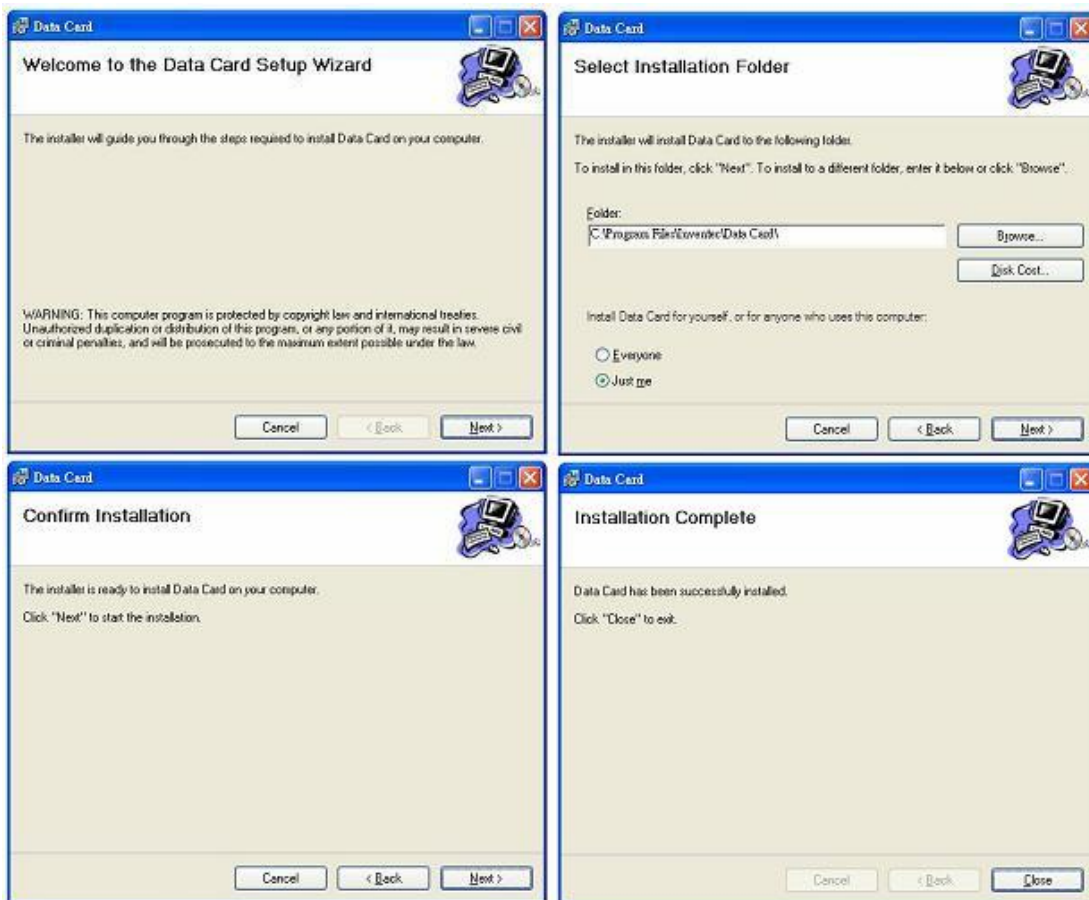
Style	PCI Express Mini Card
Dimension	30x51x4.75mm
Weight	8g
Antenna	Built-in in laptop
SIM Slot	SIM/USIM card slot built-in in laptop
Memory	ROM/NAND Flash/64MB, RAM/DDR/23MB
Telecom Band	GSM 850 / EGSM 900 / DCS 1800 / PCS 1900 UMTS Band I, II, V
Support Telecom Band	GPRS / EDGE / UMTS / HSDPA
Support OS	Windows 98/SE/2000/NT/ME/XP, Windows Vista

Installation Steps:

1. Turn on your computer. If you have Microsoft Windows XP, remember to log on as an administrator before setting up the software. For more information, refer to your operating system's online Help.
2. Insert the Utility CD into your CD-ROM/DVD-ROM drive, it will start installation automatically. If it does not, follow the steps below:
 - a. Start Windows Explorer.
 - b. On the left pane, click the **My Computer** icon.
 - c. Right-click the CD-ROM/DVD-ROM drive icon, and then click **Autorun**.
3. Click the **Install Driver**.
4. Follow the instructions on the screen.
5. Click the **Finish** button to complete installation.
6. Then, install "Connecting Manager" by click the **Data_Card_App_Installer**.




7. Follow the instructions on the screen.



8. Click the **Close** button to complete installation and exit program.
9. **Please insert SIM/USIM card to slot of laptop in advance.**
10. Start using Connecting Manager by clicking below icon which shows on desk.



 Please refer to more details at user manual of utility CD.

 This device complies with part 15 of the FCC Rules. Operation is subject to the following two conditions:

- (1) This device may not cause harmful interference, and
- (2) this device must accept any interference received, including interference that may cause undesired operation.



● This device has been tested and found to comply with the limits for a Class B digital device, pursuant to Part 15 of the FCC Rules. These limits are designed to provide reasonable protection against harmful interference in a residential installation. This equipment generates, uses and can radiated radio frequency energy and, if not installed and used in accordance with the instructions, may cause harmful interference to radio communications. However, there is no guarantee that interference will not occur in a particular installation. If this equipment does cause harmful interference to radio or television reception, which can be determined by turning the equipment off and on, the user is encouraged to try to correct the interference by one or more of the following measures:

- Reorient or relocate the receiving antenna.
- Increase the separation between the equipment and receiver.
- Connect the equipment into an outlet on a circuit different from that to which the receiver is connected.
- Consult the dealer or an experienced radio/TV technician for help.

Changes or modifications not expressly approved by the party responsible for compliance could void the user's authority to operate the equipment.

● This device complies with FCC radiation exposure limits set forth for an uncontrolled environment. In order to avoid the possibility of exceeding the FCC radio frequency exposure limits, human proximity to the antenna shall not be less than 20cm (8 inches) during normal operation.