

Chapter 5.

Bluetooth Connections

5.1 Bluetooth Modes

5.2 Bluetooth Partnership (Bonding)

5.3 Beaming Information (Bluetooth)



Bluetooth is a short-range wireless communications technology. Devices with Bluetooth capabilities can exchange information over a distance of about 10 metres without requiring a physical connection. You can even beam information to a device in a different room, as long as it is within range.

The software included with your device allows you to use Bluetooth in the following ways:

- Beam information, such as files, appointments, tasks, and contact cards, between devices that have Bluetooth capabilities.
- Create a connection between your device and a Bluetooth phone to use the phone as a modem.

5.1 Bluetooth Modes


Bluetooth on your device operates in three different modes:

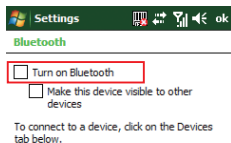
1. **On.** Bluetooth is turned on and you can use Bluetooth features.
2. **Off.** Bluetooth is turned off. In this mode, you can neither send nor receive information using Bluetooth. You might want to turn off the radio at times to conserve battery power, or in situations where radio use is prohibited, such as onboard an aircraft and in hospitals.
3. **Visible.** Bluetooth is turned on, and all other Bluetooth-enabled devices within a range of 10 meters can detect your device.



By default, Bluetooth is turned off. If you turn it on, and then turn off your device, Bluetooth also turns off. When you turn on your device again, Bluetooth automatically turns on.

Turning Bluetooth On or Off

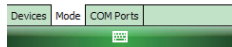
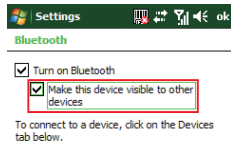
1. Tap  > **Settings** > **Connections** tab > **Bluetooth**.
2. Tap **Mode** tab, check or uncheck the checkbox in front of **Turn on Bluetooth** to turn on or off Bluetooth.



Making Your Device Visible

To receive beamed information, beaming devices or computers must be able to detect your device.

1. Tap  > **Settings** > **Connections** tab > **Bluetooth**.
2. Select **Make this device visible to other devices**, and tap **ok**.



Other Bluetooth-enabled devices can now detect your device and attempt to beam information to it, establish a Bluetooth partnership, or use a Bluetooth service.



Selecting **Make this device Visible to other devices** also turns on Bluetooth.




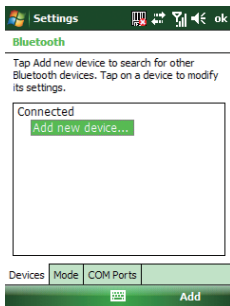
Turning off Bluetooth will make your device not visible, and it will also prevent you from sending a Bluetooth beam.

5.2 Bluetooth Partnership (Bonding)

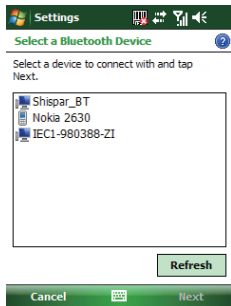
A Bluetooth partnership is a relationship that you create between your device and another Bluetooth-enabled device in order to exchange information in a secure manner. Creating a partnership between two devices involves entering the same personal identification number (PIN) on both devices, and this is a one-time process. Once a partnership is created, the devices can recognize the partnership and exchange information without entering a PIN again. Make sure the two devices are within a range of 10 meters, and Bluetooth is turned on and in discoverable mode.

Creating a Bluetooth Partnership

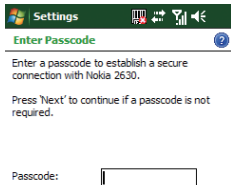
1. Tap  > **Settings** > **Connections** tab > **Bluetooth** > **Devices** tab.
2. Tap **Add new device**. Your device searches for other Bluetooth-enabled devices and displays them in the list.



3. Select the device with which you want to create a Bluetooth partnership, and tap **Next**. Tap **Refresh** if the device you want to connect is not listed.

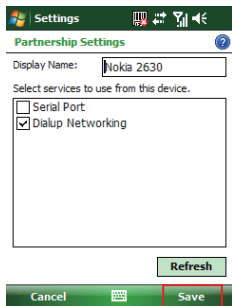


4. In **Passcode**, if you want to use a passcode (recommended for enhanced security), enter an alphanumeric passcode between 1 and 16 characters, and tap **Next**. Otherwise, leave the passcode blank.



5. Enter the same passcode on the other device.

6. Select the service to use from the device, and tap **Save**.




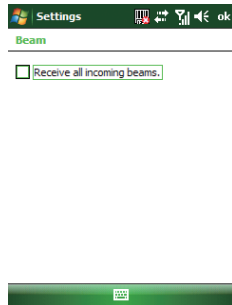
NOTE

Once you create a partnership, the Bluetooth-enabled devices don't need to be visible to beam information between them; Bluetooth needs only to be turned on.

5.3 Beaming Information (Bluetooth)

Receiving Beamed Information

1. Tap  > **Settings** > **Connections** tab > **Beam**.
2. **Select Receive all incoming beams.**
3. To receive beams by using Bluetooth, ensure Bluetooth is turned on and that your device is discoverable and within close range.
4. Tap **ok** .





NOTE

Once you select Receive incoming beams, your device automatically receives beams until you clear this check box.

Your device can receive all types of beamed files, but you may not be able to view all types of files on the device. You may need to copy some files to a PC for viewing.

Beaming an Item


In the Calendar, Contacts, Notes, Tasks, and Pictures programs, you can beam files and information to other devices using Bluetooth.

1. From the program, select the item you want to beam, such as an appointment in Calendar, a task in Tasks, a contact card in Contacts, a picture in Pictures, a file in File Explorer. In Calendar, for example, first open the appointment in Agenda view.
2. Tap **Menu** > **Beam**.
3. Your device will search and show visible devices, select the device to which you want to send the item.



NOTE

When using Bluetooth, if the device that you want to beam to doesn't appear in the list, ensure that the device is turned on, visible, and within close range of your device. Also, ensure that Bluetooth is turned on.

You can obtain the Bluetooth BD Address of your device. Tap  > **Settings** > **System** tab > **Device Info** > **Hardware** tab.

Chapter 6.

Transferring Files To and From Your Device

6.1 Using ActiveSync

6.2 Transferring from Memory Cards

6.3 Using Bluetooth


6.4 Transferring to a PC or Other Devices

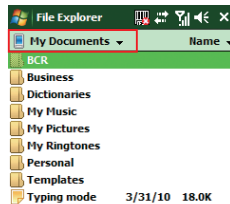
You may need to transfer application data such as Word documents, Excel spreadsheets, PowerPoint slides, and/or media files from your PC to your device. This section describes different methods to transfer files from a PC to your device.

6.1 Using ActiveSync


**NOTE**

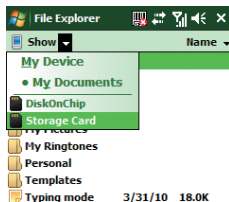
To transfer files from PC to your device with ActiveSync, you must install Microsoft ActiveSync on the PC first. Please refer to Chapter 4 Synchronizing Information for detail on how to install and set up ActiveSync.

1. Connect your device to the PC with the USB cable. Microsoft ActiveSync should be automatically launched on the PC if it is set up correctly.
2. Select an information type under Synchronization Options in the Synchronization Setup Wizard by checking the checkbox in front of it.
3. Click the **Settings** button and add the files you want to transfer. Click the **OK** button when you finish.
4. Click **Next**, and then click **Finish** to start the synchronization process.
5. On your device, tap  > **Programs** > **File Explorer**. The files should be saved to My Documents. Check to see if the files have been transferred to your device successfully.

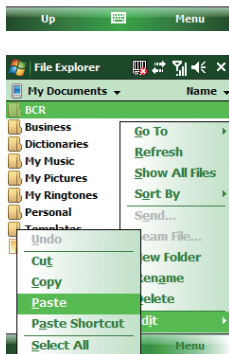


6.2 Transferring from Memory Cards

1. Insert your memory card into the device's mini-SD card slot. (See "1.5 Mini-SD cards" for details.)
2. Tap  > **Programs** > **File Explorer**.
3. In the Show list, select **Storage Card**.



4. File Explorer should display all the files stored in your memory card. Tap and hold the file you want to transfer, and select **Copy**.
5. From the Show list in File Explorer, go to destination folder. (For example, **My Device** > **My Documents**.)
6. Tap **Menu** > **Edit** > **Paste**.



6.3 Using Bluetooth



NOTE

Before receiving files, you must turn Bluetooth on and establish a Bluetooth partnership between your PC and your device. (See “Chapter 5. Bluetooth Connections” for details.)

1. On your PC, locate the file you want to send using Bluetooth with Windows Explorer.
2. Right-click the file and select the device you want to transfer the file to under “Send To > Bluetooth.”
3. Tap **Yes** when your device prompts about receiving a file.
4. After the transmission process is finished, the file should be saved in your device under My Documents in the File Explorer.

6.4 Transferring to a PC or Other Devices

Please refer to Section 5.3 “Beaming Information (Bluetooth)” for details.

Chapter 7.

Connecting to the Internet

- 7.1 Setting up Internet connections
- 7.2 Using Internet Explorer Mobile
- 7.3 Using Wireless Manager
- 7.4 Using a Wi-Fi Connection

7.1 Setting up Internet connections

Your device's powerful networking capabilities allow you to access the Internet or your corporate network at work through wireless and conventional connections. Specifically, you can configure your device to establish a connection via GPRS or Proxy.

With an active connection on your device, you can browse the Web, download e-mails, or use MSN Messenger. Check with your service provider to see if a connection has already been set up for you, and if over-the-air configuration is supported.

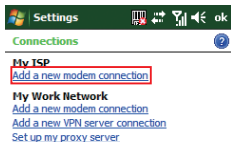
If you need to manually set up a connection, it is important that you obtain the following information from your Internet Service Provider (ISP) or the company whose intranet you are trying to access:

- User name
- Password
- Access point name (required for GPRS connection)
- Domain name (required for accessing a corporate network or an intranet)

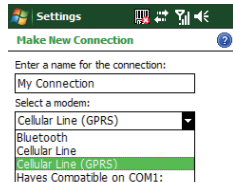
Creating a GPRS Connection

Every network connection is different. You should gather all of the relevant information or network settings you need before starting this process.

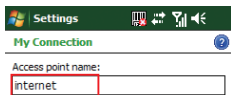
1. Tap  > **Settings** > **Connections** tab > **Connections**.
2. Tap **Add a new modem connection**.



3. Enter the following information (you may or may not need to enter all of the following information), and tap **Finish**.
- Enter a name for the connection.
 - In **Select a modem**, select **Cellular Line (GPRS)**. Then tap **Next**.



- In **Access point name**, enter the access point name, then tap **Next**.



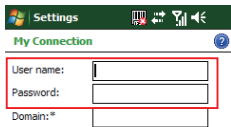
Settings My Connection

Access point name:
internet



Back Next

- In **User name**, enter your user name for the GPRS network, if required.
- In **Password**, enter your password, if required.



Settings My Connection

User name:
Password:
Domain:*

* If provided by ISP or network administrator.

Advanced...




Back Finish

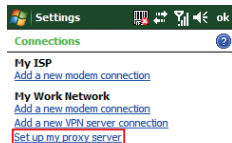
- Tap **Advanced** > **Servers** tab. In **DNS**, enter the primary Domain Name System (DNS) address, if required.
- In **Alt DNS**, enter the secondary DNS address, if required.
- Tap **TCP/IP** tab. In **Use specific IP address**, enter the Internet Protocol (IP) address for the device, if required.

The device uses this connection when you open a program that connects to the Internet.

Creating a Proxy Connection

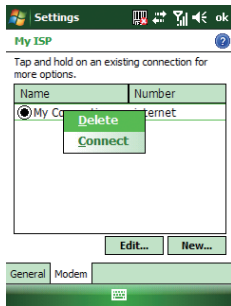
Every network connection is different. You should gather all of the relevant information or network settings you need before starting this process.

1. Tap  > **Settings** > **Connections** tab > **Connections**.
2. Tap **Set up my proxy server**.
3. Check the checkbox in front of **This network connects to the Internet**.
4. Check the checkbox in front of **This network uses a proxy server to connect to the Internet**.
5. Under **Proxy server**, enter the proxy server name.
6. If the proxy server uses a different port or requires a username and password tap **Advanced**, select the proxy type to change its settings, then enter username, password and/or port number in the proper fields.
7. Tap **ok** .



Deleting a Connection

1. Tap > **Settings** > **Connections** tab > **connections**.
2. Tap **Manage existing connections**.
3. Tap and hold on the connection you want to delete and select **Delete**.



**NOTE**

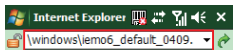
The device cannot connect to a PC through ActiveSync while connecting to the Internet using GPRS.

7.2 Using Internet Explorer Mobile

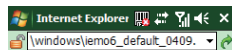
Internet Explorer Mobile is a full-featured Web browser, optimized for use on your device. You can use Internet Explorer Mobile to browse the Internet once you have set up your Internet connection (if you haven't done so, please read the previous chapter before continuing).


Browsing the Internet

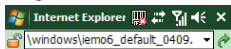
1. To browse the Internet you must have a valid connection established.
2. Tap  > **Internet Explorer**.
3. Do any of the following:
 - Enter the address in the address bar, then tap .



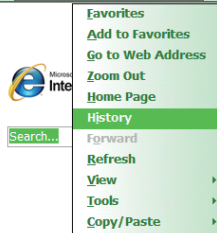
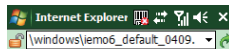
- Tap **Favorites** then select a Web Page. You can scroll down the Favorites box and select one alternatively.



- Highlight the search box and type in a term that you want to search for. Then tap  to begin search .




- Select **Menu** > **History**, then select a Web Page. You can scroll down to the History box and select one alternatively.





To change the Home page, go to a Web page, tap **Menu** > **Tools** > **Options**. Tap **Home Page**, select **Current page**, and then tap **Done**.


Adding a Web Page to the Favorite List

1. Tap  > **Internet Explorer**.
2. Go to the page you want to add, tap **Menu** > **Add to Favorites**.
3. Confirm or change the name and Web page address.
4. In **Folder**, select a folder for this favorite.
5. Tap **Add**.




A quick way to add favorites to your device is to synchronize with your PC using ActiveSync. For more information, see ActiveSync Help on your PC.


Deleting a Favorite

1. Tap  > **Internet Explorer**.
2. Tap **Menu** > **Favorites**.
3. Select a favorite and then tap **Menu** > **Delete**.
4. Tap **Yes** to confirm the deletion.


Changing the Size of Text on Web Pages

1. Tap  > **Internet Explorer**.
2. Tap **Menu** > **View** > **Text size** and select the size you want.
There are five zoom options you can select: Largest / Larger / Medium / Smaller / Smallest.


Showing or Hiding Pictures on Web Pages

1. Tap  > **Internet Explorer**.
2. Tap **Menu** > **Tools** > **Options** > **Other**.
3. Select **Show Pictures**. Images on the Web pages that you visit will be downloaded. Un-check this item if you do not want internet Explorer to show pictures.

Changing Web Page Display Options

1. Tap  > **Internet Explorer**.
2. Tap **Menu** > **View**.
3. Select one of the following:
 - **Mobile** : Arranges the content into one column that is as wide as the screen. This means that you will rarely have to scroll horizontally.
 - **Desktop** : Maintains a layout similar to what you see on a desktop computer, but makes items smaller.

Viewing a Page in Full Screen Mode

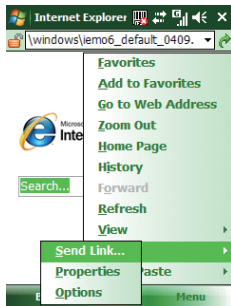
1. Tap  > **Internet Explorer**.
2. Do either of the following:
 - Tap **Menu** > **View** > **Full Screen**.
 - Tap and hold on the screen with stylus, and then tap **Full Screen** on the pop-up menu.



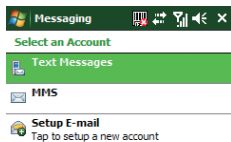
To exit full screen mode, press either SOFT KEY, and then tap **Menu** > **View** > **Full Screen** to cancel the selection.

Sending a Link via E-mail

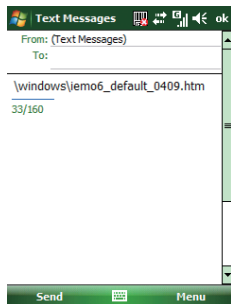
1. Tap  > **Internet Explorer**.
2. Go to the page you want to send.
3. Tap **Menu** > **Tools** > **Send Link**.



4. Select an account.




5. A new message is created with the page address inserted in the message body. You can then enter the recipient's phone number and edit the message.



6. Tap **Send** to send the message.



Clearing Temporary Files, Cookies or History




1. Tap  > **Internet Explorer**.
2. Tap **Menu** > **Tools** > **Options**.
3. Tap **Browsing History**.
4. Select an item (Temporary Files, Cookies or History) and then tap **Clear**.
5. Tap **Done** when finished.

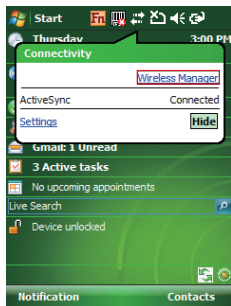
7.3 Using Wireless Manager

Wireless Manager is a program that allows you to conveniently turn on or off the various wireless connections on the Windows Mobile-based device, including cellular phone, Bluetooth and Wi-Fi.

Opening Wireless Manager

To open the Wireless Manager, do one of the following:

- Tap  icon on the screen to open the Wireless Manager directly.
- Tap  > **Settings** > **Connections** tab > **Wireless Manager**.
- Tap the signal strength icon () at the top of the screen, and tap **Wireless Manager**.



Enabling and Disabling a Feature

There are three buttons in the Wireless Manager; each of them represents one certain feature. You can simply tap a button to activate its corresponding feature.

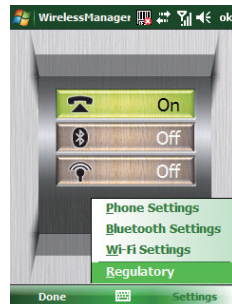


- Tap the first button to toggle between enabling or disabling the **phone**.
- Tap the second button to toggle between turning on or off **Bluetooth**.
- Tap the third button to toggle between turning on or off **Wi-Fi**.

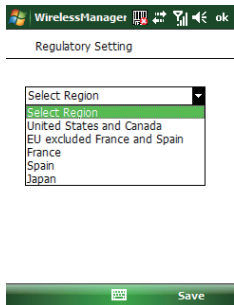
Changing Regulatory Setting

The regulations for the frequency, channel and power of Wi-Fi and Bluetooth are varied in different regions. You can adapt a country's telecommunications regulatory settings while you use your device to access wireless networks in the country.

1. Open Wireless Manager and then tap **Settings** > **Regulatory**.



2. Select a country/region in which you use this device. Tap **Save** to confirm the setting.



Wi-Fi can not be turned on if the Regulatory Setting is not specified.

Your device will restart automatically after you change the regulatory setting.

7.4 Using a Wi-Fi Connection

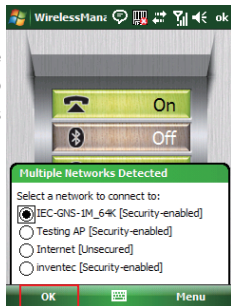
Wi-Fi is an enabling technology that allows you to quickly access e-mail, the internet, and broadband multimedia content. When your device encounters a hotspot (a place where you can access Wi-Fi networks), it can then connect to that network wirelessly. While some hotspots are free, the most robust public Wi-Fi networks are provided by private internet service providers (ISPs) that charge a fee for users to connect to the internet.

Connecting to a Wi-Fi Network

1. Tap  > **Settings** > **Connections** tab > **Wireless Manager**.
2. Tap the third button to turn on Wi-Fi connection.



3. Available wireless networks will be detected and showed on a pop-up window. Select the desired wireless network and tap **OK**.



4. If required, select **The Internet** if the wireless network connects your device to the Internet; select **Work** if the wireless network connects to a private network. Then tap **Connect**.
5. Enter a network key if required. Then tap **Connect**.
6. When Wi-Fi connection is activated, the  icon shows on the title bar.




NOTE

You may need to consult your ISP before you try to run this utility.

You can obtain the Wi-Fi address of your device. Tap  > **Settings** > **System** tab > **Device Info** > **Hardware** tab and refer to WiFi MAC Address.

Checking Wi-Fi Connection

You can check the current wireless connection status via Wi-Fi Network Manager after connecting to a Wi-Fi Network.

1. Tap  > **Settings** > **Connections** tab > **Wi-Fi Network Manager**.
2. In **Status** tab, you can see information of link status, SSID, Signal strength...etc.
3. In **Info** tab, you can check values of servers and IP address and renew IP if needed.
4. In **Advanced** tab, you can refer to MAC address and version information.

Configuring Wi-Fi Settings

You can configure wireless networks on your device by adding new Wi-Fi connections and editing currently available networks.



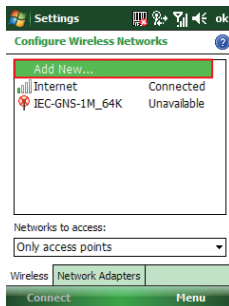
The screen for wireless networks configuration can only be accessed after Wi-Fi is turned on.

Creating a Wireless Connection

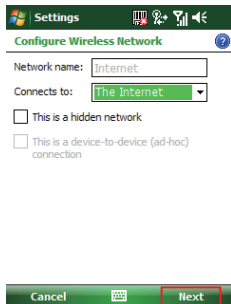
1. Open Wireless Manager and then tap **Settings** > **Wi-Fi Settings**.



2. In the **Wireless** tab, tap **Add New...** on the screen.



3. Enter the **Network name** and **Network type**, then tap **Next**. If you want to connect to another device instead of a network through an access point, select **This is a device-to-device (ad-hoc) connection**.



4. Select **Authentication** type and **Data Encryption** and enter the **Network key** and **Key index** if needed. Tap **Next**.

Settings

Configure Network Authentication

Authentication: Open

Data Encryption: Disabled

The key is automatically provided

Network key:

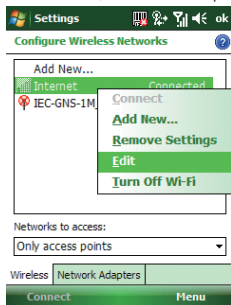
Key index: 1

Back Next

5. Select **Use IEEE 802.1x network access control** to use EAP (Extensible Authentication Protocol). Select **EAP type: PEAP or Smart Card or Certificate**.
6. Tap **Finish**.

Editing a Wireless Network

1. Open Wireless Manager and then tap **Settings** > **Wi-Fi Settings**.
2. In **Wireless** tab, you can see currently available wireless networks. Tap and hold the network you want to edit, and then tap Edit on the pop-up screen.



3. Changing settings of this wireless network and tap **Finish** to save them.

Chapter 8.

Messaging & Contacts

8.1 Text Messaging

8.2 Multimedia Messaging Service

8.3 E-mail

8.4 Using Contacts


Messaging is the unified point of access for all message types within your device. With Messaging, you can send and receive text messages, e-mails, and MMS messages.

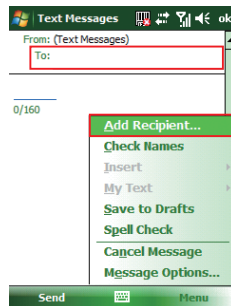
Contacts helps you to manage your contact information. Using Contacts you can quickly communicate with people.

This section describes the procedure on sending and receiving different kinds of messages, and using Contacts to manage addresses and phone numbers.

8.1 Text Messaging

Creating a Text Message

1. Tap  > **Messaging** > **Text Messages**.
2. In the message list, tap **Menu** > **New**.
3. Do either of the following:
 - Enter the recipient's text message number in the **To** field. Insert a semicolon (;) between multiple text message numbers.
 - Tapping **Menu** > **Add Recipient**, and then select a name.
 - Enter your message and tap **Send**. Text messages are sent immediately.



Using Preset Text Messages

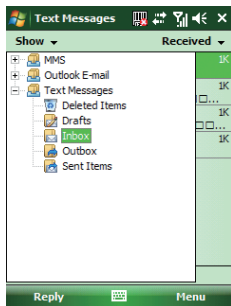
You can quickly insert preset or frequently used messages into your text message. While composing a message, tap **Menu > My Text** and select a preset message to insert.

To edit a preset message:

1. While composing a message, tap **Menu > My Text > Edit My Text Messages**.
2. Select a message and edit.
3. Tap **ok** .


Reading a Text Message

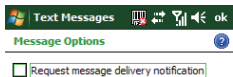
1. Tap  > **Messaging > Text Message**.
2. Select **Inbox** under Text Messages.



3. In the message list, tap the text message you want to read.

Requesting Message Delivery Notification

1. Tap  > **Messaging** > **Text Messages**.
2. Tap **Menu** > **New**.
3. Tap **Menu** > **Message Options**.
4. Select this check box to request a message delivery notification.



5. Tap **ok** .

**NOTE**


To change options for the Text Message, tap  > **Messaging** > **Menu** > **Tools** > **Options**, and select the type of options to change.

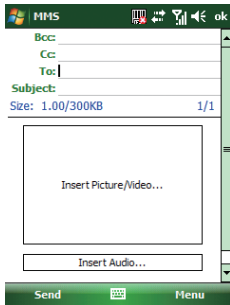
8.2 Multimedia Messaging Service



Creating and sending Multimedia Message Service (MMS) messages to your friends and family is fun and easy. You can include or capture photos or video clips, include or record audio, add text, then send them along with your MMS message.

Composing a MMS Message

MMS messages can be composed in a combination of various slides where each of the slides can be any combination of audio or video clip, an image, and/or text.

1. Tap  > **Messaging**, and select **MMS**.
2. Tap **Menu** > **New**.
3. In **To**, **Cc**, and/or **Bcc**, enter recipient e-mail addresses. Insert a semicolon (;) between multiple addresses. You can tap **Menu** > **Add Recipient to** add recipients.



4. In **Subject**, enter a subject.
5. To create a slide, do any combinations of the following:
 - Tap **Insert Picture/Video** and select an picture or video clip.
 - Tap **Insert Audio** and select an audio clip.
 - Tap **Insert Text** and enter a message.
 - Tap **Menu > Insert > Sound Recorder** and tap RECORD () button to record a new audio clip. Tap STOP () button to stop recording.
 - Tap **Menu > Options > Background Color** and select a background color for the slide.
6. Tap **Send**.



NOTE

After the first slide is filled with content, you can tap **Menu > Slides > Insert** to add another slide to your MMS message.

Previewing a MMS Message

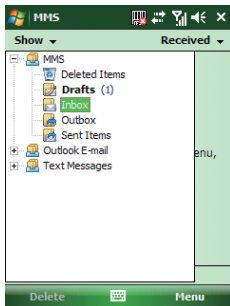
You can preview a MMS message before sending it.

1. To preview your MMS message, tap **Menu > Preview** after you composed your message.
2. Tap **Done** or **Replay**.

Reading a MMS Message


1. Tap  > **Messaging > MMS**.

2. Select **Inbox** under MMS.



3. In the message list, tap the MMS message you want to read.

Configuring MMS Settings

1. Tap  > **Messaging** > **MMS**.
2. Tap **Menu** > **MMS Settings**.
3. Select the type of options to change.
4. Tap **ok** .



Most of the time, you have to configure MMS settings in Messaging as well as a GPRS connection in order to use MMS.

8.3 E-mail


Setting Up an Internet E-mail Account Manually

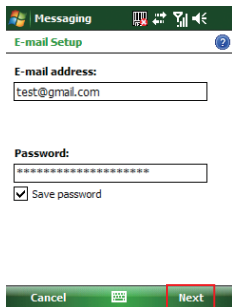
Before you set up your Internet e-mail account, please ensure that you have the necessary information.

Setting	Description
User name	Usually the first part of your e-mail address, which appears before the “at” sign (@).
Password	Choose a strong password. You will have the option to save your password, so that you do not need to enter it each time you connect to your e-mail server.
Domain	The domain name. This may be required.
Server type	The type of e-mail server that hosts your mailbox (POP3 or IMAP4).
Account name	A name for this account. You must use a different name for each account that you set up.
Network	The type of network your e-mail server connects to.
Incoming mail server	The name of your e-mail server (POP3 or IMAP4).

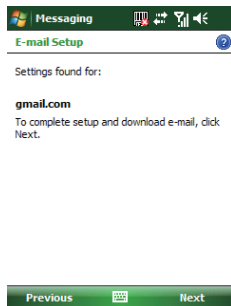
Setting	Description
Require SSL connection	Select this to ensure you always receive e-mail for this account using an SSL connection. This enables you to receive personal information more securely. Please note that if you select this and your ISP does not support an SSL connection, you will not be able to connect to receive e-mail.
Outgoing mail server	The name of your outgoing e-mail server (SMTP).
Outgoing server requires authentication	Your outgoing e-mail server (SMTP) may require authentication. Note: Your user name and password from above will be used.
Outgoing server settings	Your outgoing e-mail server may require different authentication settings than your incoming e-mail server.
Use different user name for outgoing server	A check box that lets you enter separate settings for your outgoing e-mail server.
User name	Your user name for the outgoing e-mail server.
Password	Your password for the outgoing e-mail server.
Domain	The domain name of the outgoing e-mail server.
Require SSL connection (Outgoing mail server only)	A connection that enables you to send personal information more securely. Note that if you select this and your ISP does not support an SSL connection, you will not be able to send e-mail.

Now you are ready to set up your account:

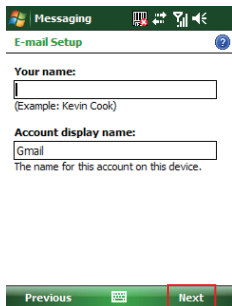
1. Tap  > **Messaging** > **Setup E-mail**.
2. Enter your e-mail address and password. Select **Save password** if you want, or you can enter the password each time you send and receive e-mails. Then tap **Next**.



3. Tap **Next**. If the device is connected to the internet, the Auto Setup feature will attempt to retrieve settings for this e-mail account, saving you the effort of typing in all the required settings. If no matching settings are found (or if no internet connection exists), then you will need to enter each setting manually.

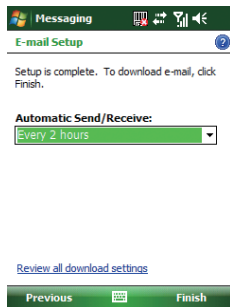


4. Enter the name you want to appear when you send messages, then tap **Next**.




5. In **Automatic Send/Receive**, select a frequency for sending/receiving e-mails. Please note that data charges

will probably be incurred if you send and receive e-mail outside of WiFi or Bluetooth range. Tap **Review all download settings** to change your e-mail settings; otherwise, tap **Finish** to start downloading messages.



NOTE


If Auto Setup was not successful, enter required information (Incoming mail server, User name, Password, Outgoing mail server) manually until setup is complete.

To change options for an e-mail account, tap  > **Messaging** > **Menu** > **Tools** > **Options**, and select the type of options to change.



If you save your password and then lose your device, someone finding your device might be able to gain access to your e-mail.


Composing an E-mail Message

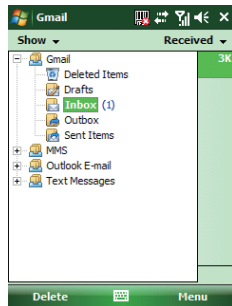
1. Tap  > **Messaging**.
2. Select an e-mail account.
3. Tap **Menu** > **New**.
4. In **To**, **Cc** and/or **Bcc**, enter recipient e-mail addresses. Insert a semicolon (;) between multiple addresses.
5. In **Subject**, enter a subject.
6. Enter a message.
7. Tap **Send**. E-mail messages are stored in Outbox and are sent to recipients the next time you synchronize or connect to your e-mail server and send and receive mail.

**NOTE**

You can quickly enter e-mail addresses from your contact cards. Tap on To and select a recipient from the list. Then, select the recipient's e-mail address.


Reading an E-mail Message

1. Tap  > **Messaging**.
2. Select an e-mail account.
3. Tap **Inbox** under this e-mail account.
4. In the message list, tap the e-mail message you want to read.





E-mail Message Options

1. Tap  > Messaging, and select an e-mail account.
2. Tap **Menu** > **New**.
3. Tap **Menu** > **Message Options**.
4. Select the type of options to change.
5. Tap **ok** .



8.4 Using Contacts

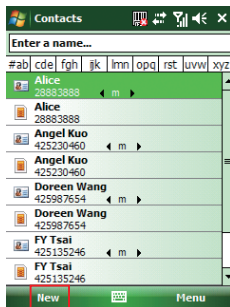
Contacts is your address book and information storage for the people and businesses you communicate with. It stores phone numbers, e-mail addresses, home addresses, and any other information that relates to a contact, such as a birthday or an anniversary date. You can also add a picture or assign a ring tone to a contact.

From the contact list, you can quickly communicate with people. Click a contact in the list for a summary of contact information. From there, you can call or send a message.

If you use Outlook on your PC, you can synchronize contacts between your device and PC.


Creating a New Contact

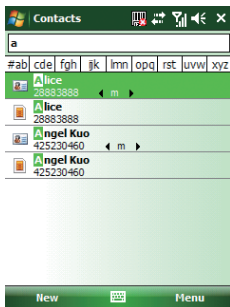
1. Tap  > **Contacts** > **New**.
2. Select **Outlook Contact**.
3. Enter information for the new contact.
4. Tap  .

**NOTE**

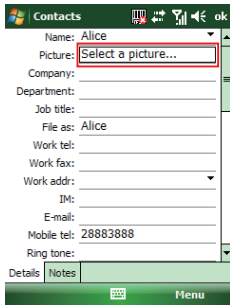
If someone who isn't in your list of contacts calls you, you can create a contact from Call History. Tap and hold the item and then select **Save to Contacts** on the pop-up submenu. To save an existing contact to your SIM card, open the contact and tap **Menu** > **Save to SIM**.

Viewing and Editing Contact Information

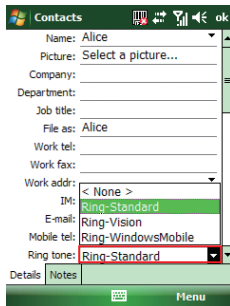
1. Tap  > **Contacts**.
2. Tap the contact whose information you want to view. You can quickly search through Contacts by entering the first letter of the contact.



3. To edit the information, tap **Menu** > **Edit**.
4. Do any of the following:
 - Tap **Picture** and select a picture you want to add.




- Tap **Ring tone** and select the ring tone you want.




5. When finished making changes, tap **ok**.

Sending an E-mail to a Contact

1. Tap  > **Contacts**.
2. Tap the contact you want to send an e-mail to.
3. Tap the e-mail address.
4. Select the e-mail account to use.
5. Enter a subject, compose your message, and then tap **Send**.

Sending a Text Message to a Contact

1. Tap  > **Contacts**.
2. Tap the contact you want to send a text message to, and tap **Menu** > **Send Text Message**.
3. Compose your message, and tap **Send**.

Creating a SIM Contact

Contacts can be created and stored on a subscriber identity module (SIM.) If you move the SIM to another device, your SIM contacts are moved as well.

1. Tap > **Contacts**.
2. Tap **New** > **SIM Contact**.
3. Enter the name and phone number of the contact and tap **ok** .



Remember to install a valid SIM to your device before creating a SIM Contact.