

BlissAer

KERY-PLUS

True HEPA Air Purifier

USER MANUAL



support@blissaer.com

We're Here to Help!

✉ support@blissaer.com
🌐 blissaer.com

BlissAer

True HEPA Air Purifier
Model: Kery-Plus

Thank you for
purchasing a
BlissAer Air Purifier!



Scan the QR Code to Register Your
Device and Activate Warranty.



PLEASE READ THESE
INSTRUCTIONS CAREFULLY
AND RETAIN THEM FOR
FUTURE REFERENCE.

FCC Warning

This equipment may generate or use radio frequency energy. Changes or modifications to this equipment may cause harmful interference unless the modifications are expressly approved in the instruction manual. The user could lose the authority to operate this equipment if an unauthorized change or modification is made.

This device complies with part 15 of the FCC Rules. Operation is subject to the following two conditions: (1) This device may not cause harmful interference, and (2) this device must accept any interference received, including interference that may cause undesired operation.

This equipment complies with RF radiation exposure limits set forth for an uncontrolled environment. This equipment should be installed and operated with a minimum distance of 20 centimeters between the radiator and your body.

NOTE

This equipment has been tested and found to comply with the limits for a Class B digital device, pursuant to part 15 of the FCC Rules. These limits are designed to provide reasonable protection against harmful interference in a residential installation. This equipment generates, uses and can radiate radio frequency energy and, if not installed and used in accordance with the instructions, may cause harmful interference to radio communications. However, there is no guarantee that interference will not occur in a particular installation. If this equipment does cause harmful interference to radio or television reception, which can be determined by turning the equipment off and on, the user is encouraged to try to correct the interference by one or more of the following measures:

- Reorient or relocate the receiving antenna.
- Increase the separation between the equipment and receiver.
- Connect the equipment into an outlet on a circuit different from that to which the receiver is connected.
- Consult the dealer or an experienced radio/TV technician for help.
- The rating information is located at the bottom of the unit.

Model	Kery-Plus
Dimension	7.75" x 7.67" x 15.5"
Weight	4.54lbs
Power Supply	Input: AC100-240V 50/60Hz Output: DC24V 1.2A
Power	23W

Safety Precautions

Please read carefully and follow all safety precautions. Failure to comply with these instructions and warnings may result in undesired results, damage to the machine or your warranty being voided.

- Shut off and unplug the device before servicing or moving it.
- Do not move the purifier by pulling the power cord.
- Do not immerse the purifier in water or any other liquid.
- Ensure the plug fits your power outlet and that the purifier voltage matches your local power supply.
- Do not use a damaged power plug. Contact customer service for replacement.
- Do not use replacement parts from different manufacturers.
- Keep the purifier on a stable surface.
- Do not insert fingers or objects into the fan.
- Keep children and pets away from the purifier.
- Avoid using the purifier in excessively humid areas.
- Allow 12 inches of clearance around the air intake and 20 inches around the fan outlet.
- Do not block the air inlet or outlet.
- Keep the purifier away from heat, open flame, and flammable liquids.
- Do not spray flammable liquids around the purifier.
- Do not use the purifier with a solid-state speed control device.
- This product is not a substitute for normal ventilation, daily dust collection, or range hood ventilation.

CONTENTS

KNOWING YOUR AIR PURIFIER

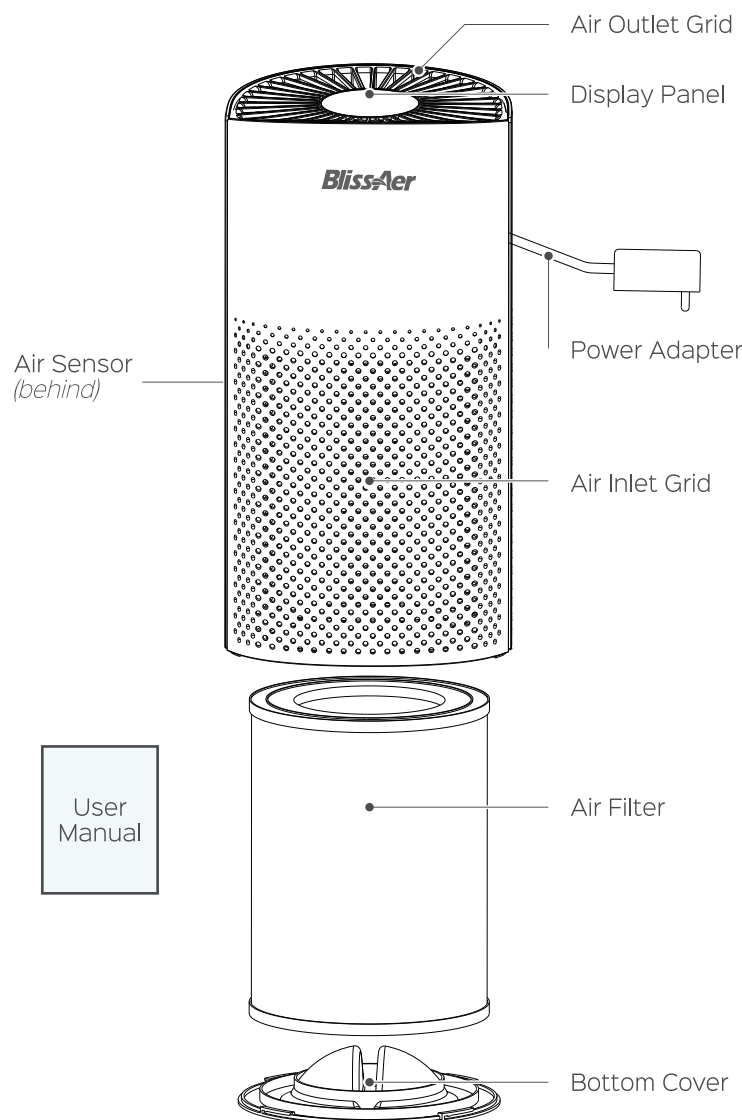
Package Contents	04
Getting Started	05
Controls & Lights	06
General Operation	07
Smart App Control	08
Smart App Setup	09

CLEANING AND MAINTENANCE

DOs and DON'Ts	10
Replacing the Filter	11
Storage	12
Troubleshooting	13
Safety Precautions	14
FCC Warning	15

KNOWING YOUR AIR PURIFIER

Package Contents



Troubleshooting

PROBLEM	CHECKLIST	WHAT TO TRY
The purifier doesn't turn on after pressing the power button	Was the power cord removed from inside the machine and plugged into the wall?	Check inside machine and plug outlet into wall.
	Does your wall outlet have power?	Check your power supply
No or little air is blowing out	Is anything blocking the inlet area or fan blades?	Remove any objects from around the inlet area and from the fan area.
	Has the plastic wrap been removed from the filter?	Check inside the machine that no plastic wrap remains around filter.
The purifier is making loud noises	Is the purifier tilted?	Place purifier on a flat and level surface.
	Is there anything stuck inside the fan area?	Remove any visible object from the fan area. Try lowering the fan speed to reduce noise.
Strong Smells (A plastic-like smell is normal during the first few uses)	Is the purifier being used in an area with smoke or significantly bad odors?	Check if the filter is dirty and replace if it is. Please air out the room before using the purifier next.
	Is the replace filter indicator on?	Replace the filter.
	Is there a burning smell?	Unplug immediately and contact customer service.
Filter indicator keeps flashing even after replacement.	Did you reset the filter button on the purifier?	Press and hold the time and wind speed button together for about 4 seconds. The indicator will turn off and reset to detect the next replacement.
	Did you purchase a genuine BlissAer filter?	Verify the filter is a genuine BlissAer filter.

If you are experiencing any of the above and cannot find a solution, or you have another issue, please contact support@blissaer.com.

Do not disassemble or modify the machine in any way.

Replacing the Filter

To replace the filter early, hold the timer and fan speed button for 3 seconds to force reset.



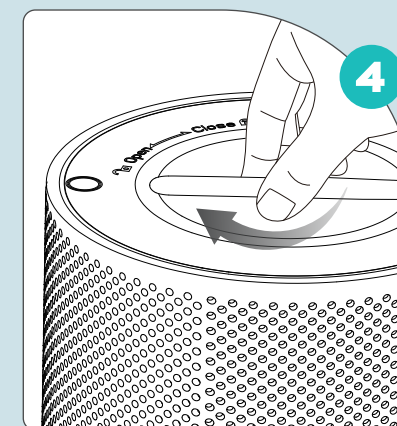
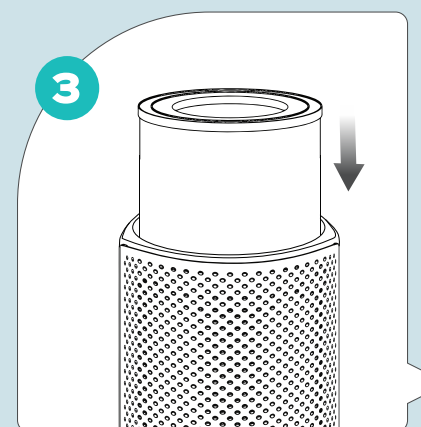
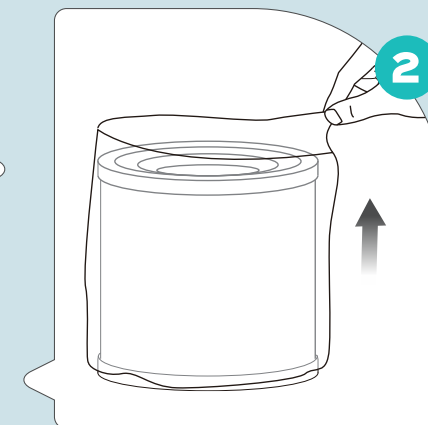
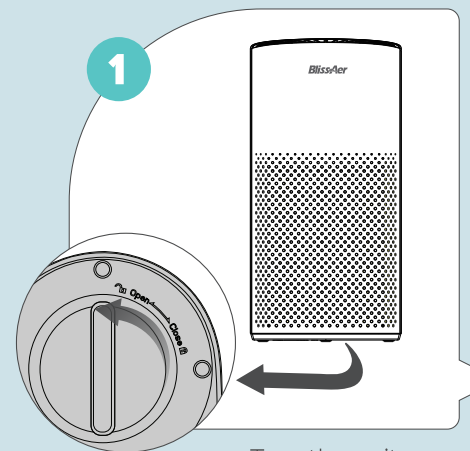
We recommend the filter be replaced every 3-6 months. You may need to replace yours more or less frequently depending on your specific frequency of use and air quality. **Please visit QR code to purchase more filters.**

Storage

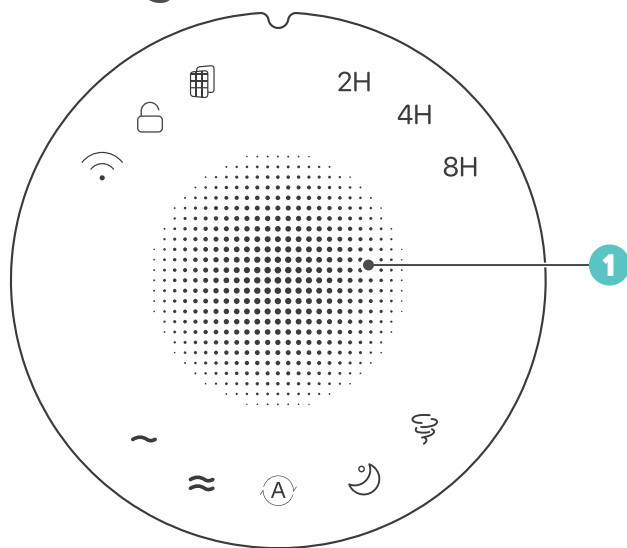
- Power off the purifier and unplug the power cord.
- Remove the filter and clean the dust from the outer filter screen.
- Clean the inlet and outlet areas and the shell of the machine following the cleaning instructions above.
- Place the purifier into a dust bag or cover and store it in a well-ventilated area away from direct sunlight.
- Power on the purifier for a few minutes every so often if stored for a long period.

BEFORE FIRST USE

Getting Started



Controls & Lights



1 Air Quality Indicator

The sensor automatically detects the current air quality status on start-up for 30 seconds. The color displayed indicates the current air quality:

RED poor air quality **GREEN** good air quality **BLUE** excellent air quality

Light brightness can be controlled via app and dimmed to your preference.

Timer Button

Select a time to turn the unit off after 2, 4 or 8 hours.

2H 4H 8H Timer Lights.



Power Button

Tap to turn the unit on and off.



Wifi Indicator



Fan Speed Button

Tap to switch between the fan speed modes.

~ ≈ (A) ☾ ☼



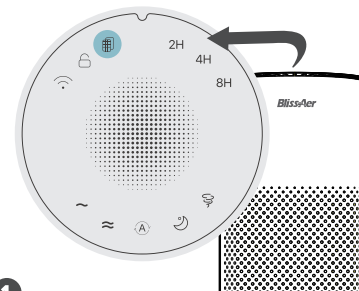
Child Lock



Replace Filter Indicator

Fan Speed 1 | Fan Speed 2 | Auto | Sleep | Turbo (only available on the app)

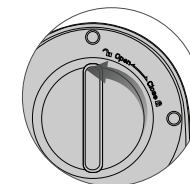
Replacing the Filter



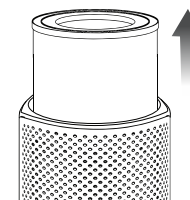
When the Replace Filter icon illuminates, it's time to replace your filter.

1

Power off the air purifier. Turn the purifier over and rotate the base counterclockwise to open.



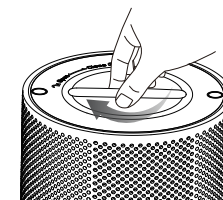
2



Remove the old filter and discard it. Remove the plastic packaging from the new filter. Insert the new filter into the purifier.

3

Replace the base and rotate clockwise to secure. Reconnect the power adapter to a power outlet.



4



Hold the timer and fan speed button for 3 seconds to reset the filter indicator light. The indicator will turn off and reset to detect the next replacement.

5

Machine will beep to indicate that the filter was re-set. You can also re-set it through the app.



cont'd

CLEANING AND MAINTENANCE

DOs

- Power off the purifier and unplug the power adapter.
- Remove the filter screen and clean the dust on the outer surface.
- Use a neutral detergent and a clean, soft cloth to gently wipe the air inlet, outlets, and shell of the purifier.
- Wipe dry and ensure the machine is completely dry before using it.
- Re-install the filter and replace the base.
- Place the filter under direct sunlight regularly for sterilization.

DON'Ts

- Use excessive water or allow water to drip into the machine.
- Use a vacuum to clean the filter screen.
- Rinse the filter screen under water.
- Apply essential oils, corrosive liquids, or sprays to the machine.

General Operation

Startup

- Plug the power cord into the wall- the machine will beep once and enter standby mode.
- Tap the power button to enter working mode, then press the power button to turn on.
- The purifier automatically enters standby after 10 seconds of inactivity.
- The purifier will automatically enter the last setup upon powering on.
- When in standby mode, the control panel will dim and only display the current mode. To switch to working mode, tap any button once.



Child/Pet Lock

- Press and hold the timer button for 5 seconds to turn on/off the child lock.
- When activated, pressing buttons will not change the current mode until the lock is turned off.

Timer

- Tap timer button once to enter working mode.
- Tap the timer button to set the purifier to operate for 2, 4, or 8-hour intervals.
- If no time interval is selected, the purifier will operate continuously.



Fan Speed

- Tap fan button once to enter working mode.
- Tap the fan speed button to switch between fan speed 1, fan speed 2, sleep mode, and auto mode.

Sleep Mode

- The purifier operates at a low speed and the center light turns off.



Auto Mode

- The purifier operates automatically based on detected air quality. The quality is indicated by the center light color.

Turbo Mode

- Turbo mode accelerates the air purification process. Use the app to select Turbo mode.
- If Turbo mode is selected via the app, pressing the fan speed button on the purifier will reset the fan speed to 1.



Smart App Control

Use the app to control the air purifier from your phone, set schedules, reset the filter, change the light brightness, and more!

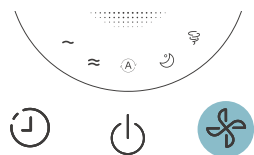


Scan the QR code and download the Smart Life app.



Use your email to register an account, then log in to the app.

On the purifier - tap any button to enter working mode.



Press and hold the fan button for approximately 5 seconds to activate WiFi pairing mode. The device will beep and wait about 4 seconds before the wifi light will start flashing. Make sure you have your Wifi password handy.

In the home tab, select "add device". Make sure the app has permission to access wifi and bluetooth. Kery-plus will now pop up as an available device. Follow the prompts to connect.



Set your device to 4G mode if using 5G or higher.

Smart App Setup

1



In the Smart Home App, navigate to the "me" icon in the lower right side of the screen.

2



Under 3rd Party Services, select which smart home assistant you would like to connect with.

3

Select "link device" to link to your desired smart home assistant. The app will automatically re-direct you to the appropriate smart home app.

4

Click "link" to confirm the connection of the purifier to your smart home assistant.

5



Your Smart home assistant will now be able to control your air purifier through it's App, as well as with your voice using commands like "Alexa, turn Kery-Plus on".

6

When the purifier is activated through voice control, it will automatically turn on to the last active mode.