

iriver

Instruction Manual

H10

iriver
www.iriver.com



Firmware Upgradable™

Thank you for your purchase.
Please read this manual carefully before using your new player.

Table of contents



▼ This manual covers the use of the H10 player hardware.
For instructions on related software and instructions for getting music on your player, please see the included iriver plus user manual.

🔌 Before using the product

| | |
|---|---|
| Welcome | |
| iriver web site | |
| Copyrights/Certification/Trademarks/Limited Liability | 1 |
| Precautions and Safety | 2 |

🔌 Chapter 1 | Getting started

| | |
|-------------------------|----|
| Features of the H10 | 8 |
| Components | 10 |
| Locating the controls | 11 |
| LCD screen display | 14 |
| Connecting the product | 17 |
| Installing the software | 24 |

🔌 Chapter 2 | Quick start

| | |
|---|----|
| Turning on / off the player and playing music | 30 |
| Controlling volume and changing modes | 31 |

🔌 Chapter 3 | Basic operation

| | |
|-----------------------|----|
| Playing music | 34 |
| Playlist function | 40 |
| Auto Sync function | 41 |
| Listening to FM radio | 42 |

🔌 Chapter 3 | Basic operation (continued)

| | |
|------------------|----|
| Recording | 47 |
| Viewing images | 52 |
| Viewing text | 54 |
| Browser function | 57 |

🔌 Chapter 4 | Useful features

| | |
|--------------------------|----|
| Settings Menu | 60 |
| Settings menu navigation | 61 |
| Menu settings | 63 |

🔌 Chapter 5 | Additional information

| | |
|------------------|----|
| Firmware upgrade | 78 |
| Initializing H10 | 79 |
| Troubleshooting | 80 |

🔌 Chapter 6 | Appendix

| | |
|----------------|----|
| Specifications | 84 |
| FCC | 85 |



Welcome

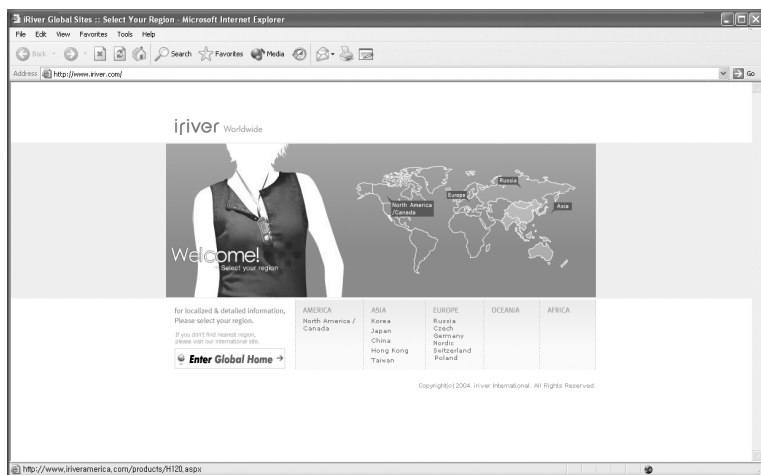
Thank you for purchasing the iriver H10. Your new player delivers a combination of style and features you can't find anywhere else.

This instruction manual is designed to help you use the iriver H10 properly.

It is important that you read the manual to ensure that you get the most out of your new player.

Thank you.

iriver web site



www.iriver.com

Obtain information about your player, look for updates, and find answers to questions at our web site.

Use the firmware (system software) upgrade function of our products from the site to continuously improve the product performance.

Get the online support and check the FAQs.

Register your iriver product online so that our Customer Service is able to provide support as efficiently as possible.

In addition, you can get updated news including new products, firmware upgrade and various events by e-mail.



Copyrights/Certification/Trademarks/Limited Liability

Copyrights

iriver Limited has all the rights of the patent, trademark, literary property and intellectual property related to this manual. You may not copy or reproduce any part of this manual unless authorized by iriver Limited. You can be punished by using any part of this manual illegally.

The software, audio and video which have an intellectual property are protected by copyright and international laws. It is user's responsibilities when he/she reproduce or distribute the contents created by this product.

The companies, institutions, products, people and events used in examples are not real data. We don't have any intention to be related with any companies, institutions, products, people and events through this manual and should not draw inferences. Users are responsible for observing the copyrights and intellectual properties.

© 1999~2005 iriver Limited. All rights reserved.

Certification

CE, FCC, MIC

Trademarks

Windows 2000, Windows XP and Windows Media Player are the registered trademarks of Microsoft Corp.

Limited Liability

Neither the Manufacturer, importers nor dealers is responsible for any accidental damage including bodily injury or any damage resulting from misuse or unsuitable operation by you.

The information on this manual is prepared with the current player specifications.

The manufacturer, iriver Limited, is adding new features to the product and may persistently apply new technologies hereafter.

All standards may be changed at any time without notice.



Precautions and Safety

Please read the notices before using for your safety.

Electricity

Do not overload a single power circuit.

Overheating or fire can result.



Do not kink or crease the power cable or place heavy objects on the power cable.

Fire can result from damaged power cables.



Do not handle power plug and adapter with wet hands.

Electrical Shock may result.



Firmly plug the adapter into the wall socket.

Fire can result from improper use.



Unplug the AC adapter during electrical storms.

Electrical Shock may result.



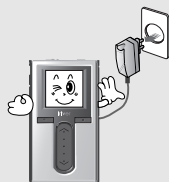
Use only the supplied AC adapter. Use of nonauthorized power adapters is not recommended.

Electrical Shock may result.



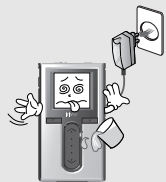
Unplug adapter when it's not in use.

Overheating or fire can result.



Immediately power off the player and unplug the AC adapter if water or other liquids are present.

Fire can result from improper use.



Immediately power off the player and unplug the AC adapter if smoke or odors emit from the player or adapter.

Fire can result from improper use.



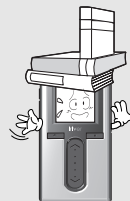
Precautions and Safety

Please read the notices before using for your safety.

Product

Do not place heavy objects on the device.

Damage to your player may result from improper use.



Keep away from harsh environments including humid, dusty, and smoky areas.

Damage to your player may result from improper use.



Avoid contact with water and other liquids.

Damage to your player may result.



Do not use water or chemicals to clean the player. Clean the surface with a soft cloth.

Damage to your player may result from improper use.



Do not clean with chemical or detergent.

Damage to your player may result from improper use.



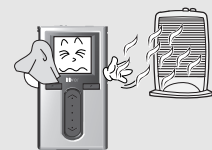
Do not use excessive force on the buttons or attempt to disassemble the device.

Damage to your player may result from improper use.



Keep out of direct sunlight and extreme heat and cold.

Damage to your player may result from improper use.



Do not drop or subject the device to impact.

Damage to your player may result from improper use.





Precautions and Safety

Please read the notices before using for your safety.

Keep the player away from strong magnets.

Damage to your player may result from magnets such as CRT, TV, monitor and speaker.



Do not disassemble or modify.

Damage to your player may result from improper use.



Do not dry the product with heater or microwave.

Damage or severe injury may result from improper use.



Bad sectors can be created in HDD because of physical impact.

Data in HDD can be damaged. Always keep a proper backup of data stored on portable devices.



When you upload or download files using USB cable, do not disconnected the USB cable suddenly or turn it off.

Data in HDD can be damaged.



Data can be damaged because of physical impact, lightning and power failure.

Users are responsible for creating backup data and iriver Limited is not responsible for any damaged data.



Precautions and Safety

Please read the notices before using for your safety.

Others

Do not use headphones / earphones while cycling, driving, or operating any motorized vehicle.

It is dangerous and is illegal in some areas.



Reduce volume while walking, especially at pedestrian crosswalk.



Do not use headphone / earphones at high volume.

Hearing experts advise against listening to continuous, loud and extended play.



Reduce volume or stop using the player if you experience a ringing in your ears.

Hearing experts advise against listening to continuous, loud and extended play.



Do not use at high volume for continuous listening.

Hearing experts advise against listening to continuous, loud and extended play.



Keep headphone/earphone cords under control to avoid getting caught on various objects.





Chapter 1 | Getting started

| | |
|---|----|
| Features of the H10 | 8 |
| Components | 10 |
| Locating the controls | 11 |
| H10 Player | 11 |
| Remote control | 12 |
| Cradle | 13 |
| LCD screen display | 14 |
| LCD screen display | 14 |
| MUSIC screen | 15 |
| FM RADIO screen | 16 |
| RECORDING screen | 16 |
| Connecting the product | 17 |
| Connecting PC - Connecting cable | 17 |
| Connecting PC - Disconnecting cable | 18 |
| Connecting the power - connecting the adapter(player) | 19 |
| Connecting the power - connecting the adapter(cradle) | 20 |
| Connecting earphone/remote control | 21 |
| Connecting the cradle | 22 |
| Connecting the cradle - Connecting PC | 22 |
| Connecting the cradle - Line-in connection | 23 |
| Connecting the cradle - Line-out connection | 23 |
| Installing the software | 24 |
| Installing iriver plus | 24 |

This manual covers the use of the H10 player hardware. For instructions on related software and instructions for getting music on your player, please see the included iriver plus user manual.



Features of the H10

1 Vivid color display – 1.5-inch TFT LCD with 260,000 colors

The 1.5-inch, 260,000 color TFT LCD shows off an exciting new visual interface that makes it easy to navigate through your music.

2 Small Device – Large Capacity

The H10 features a 5GB hard drive that can hold more than 1,200 music files. (1GB = 1,000,000,000 Bytes - Not all memory available for storage.)

3 Convenient ID3 tag database

Searching with the ID3 tag database enables you to select the music file by artist, album or genre.

4 Intuitive software (iriver plus)

The intuitive software makes it easy to manage all of your music.

5 Faster file transferring – Supporting USB 2.0 interface

USB 2.0 supports transfer rates up to 480Mbps.

6 Firmware upgradeable

Firmware upgrades keep your player up to date.



Features of the H10

7 Photo and text viewer

View digital photos or text files on the player's color screen.

8 Enhanced 3D sound

SRS WOW sound effect technology provides rich bass sound and dynamic 3D sound effect.

9 Customizable EQ settings

Over 30 preset EQs to choose from and a custom user EQ.

10 FM radio and recording

Listen to FM radio using the automatic scanning and channel memory functions. You can also record the FM broadcast while you listen.

11 Removable battery

Maximum play time can be extended with removable and rechargeable spare battery. (extra battery sold separately)

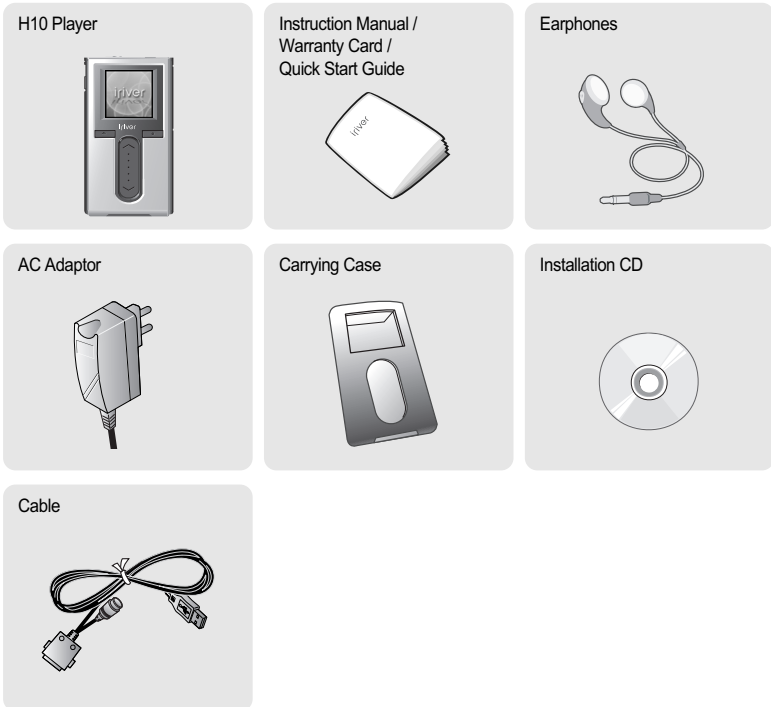
12 Easy to use touch strip

Navigating through your music is easy using convenient touch strip scrolling.

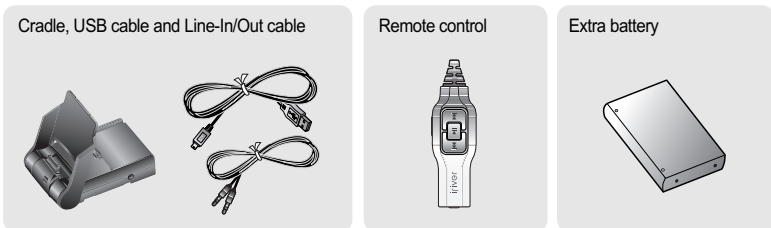


Components

Accessories subject to change without notice and may vary from image shown.



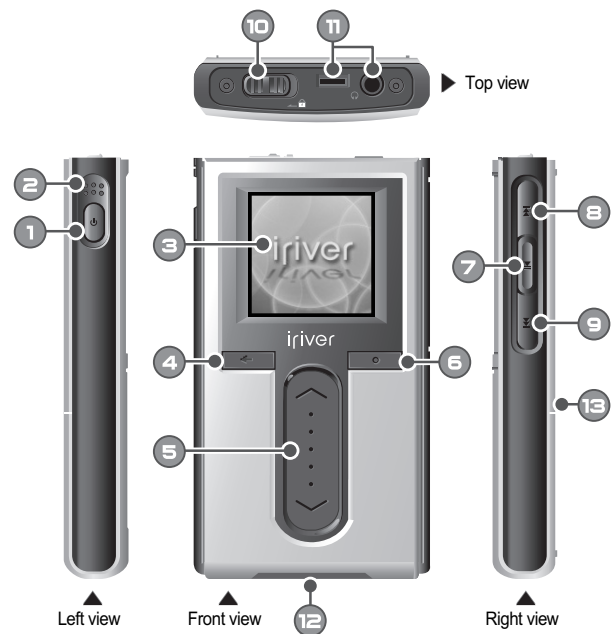
Optional Accessories



Locating the controls

Actual player may vary slightly from images shown.

H10 Player



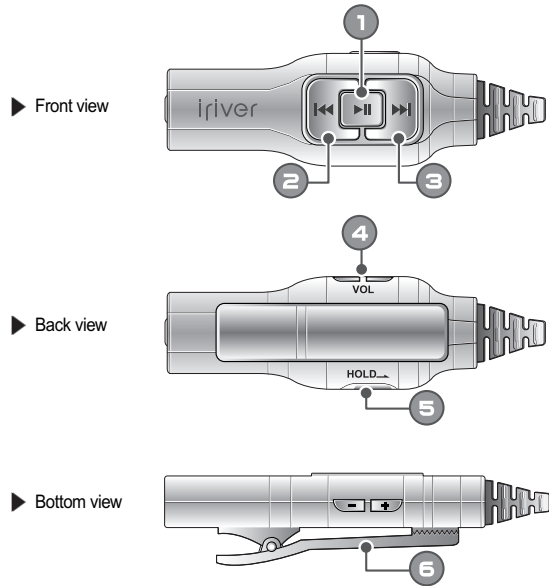
| | | | |
|---|-------------------------|----|--------------------------------|
| 1 | Power ON/OFF button | 8 | Previous button |
| 2 | Built-in microphone | 9 | Next button |
| 3 | LCD screen | 10 | HOLD switch |
| 4 | Cancel button | 11 | Earphone / Remote control jack |
| 5 | Up / Down scroll button | 12 | USB / Adapter jack |
| 6 | Select button | 13 | Battery release button |
| 7 | Play / Pause button | | |



Locating the controls

Actual player may vary slightly from images shown.

Remote control (Remote control is an optional accessory.)



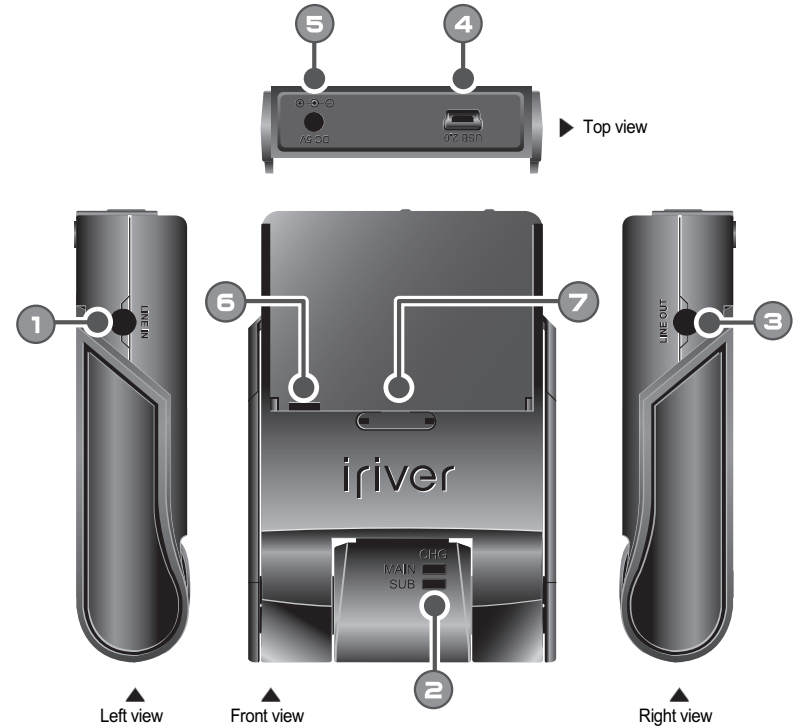
| | | | |
|---|-------------------------------------|---|-------------|
| 1 | Power ON, OFF / Play / Pause button | | |
| 2 | Previous button | 5 | HOLD switch |
| 3 | Next button | 6 | Clip |
| 4 | Volume control button | | |



Locating the controls

Actual player may vary slightly from images shown.

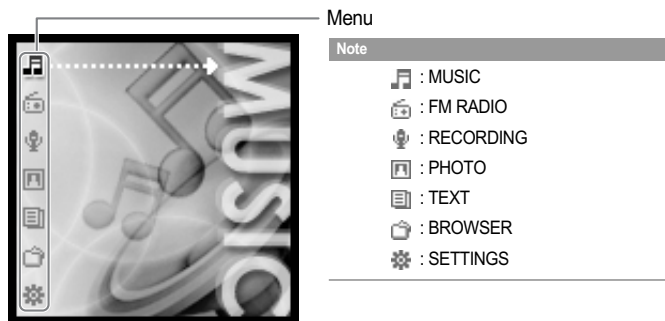
Cradle (Cradle is an optional accessory.)



| | | | |
|---|--------------------|---|------------------------|
| 1 | Line in jack | 5 | DC 5V jack |
| 2 | Charging indicator | 6 | Battery charging jack |
| 3 | Line Out jack | 7 | Battery release button |
| 4 | USB 2.0 jack | | |

LCD screen display

LCD screen display



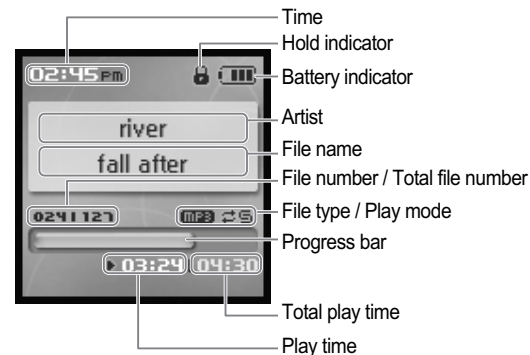
Note

Menu Examples



LCD screen display

MUSIC screen



Note

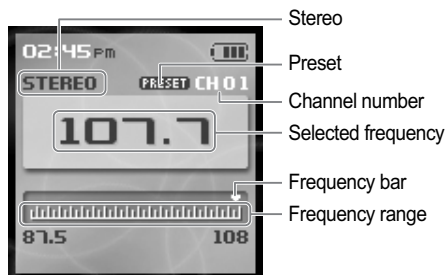
The following icons are displayed to indicate the type of file playing.





LCD screen display

FM RADIO screen



RECORDING screen



Connecting the product

This manual covers the use of the H10 player hardware. For instructions on related software and instructions for getting music on your player, please see the included iriver plus user manual.

Connecting PC – Connecting cable

- Connect the included USB cable to the port on the H10 then to an open USB port on your computer.
- Power on the player by pressing the [] button. The LCD screen will display <USB Connected>.
- Windows may show "Found New Hardware" when the player is first attached.
- The H10 will display as a new device under My Computer.
- The H10 is now installed and working properly. Please see the included iriver plus user guide for steps to load music onto the player.

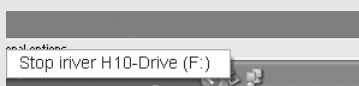
Connecting the product

Connecting PC – Disconnecting cable

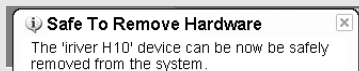
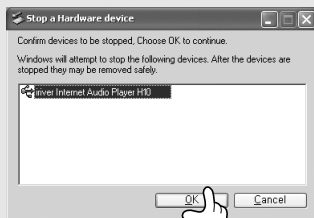
- 1 Click the icon on the system tray.



- 2 Click the popup message as shown below.



- 3 When the "Safe To Remove Hardware" popup window appears, click the [OK] button and disconnect the USB cable from PC.



Note

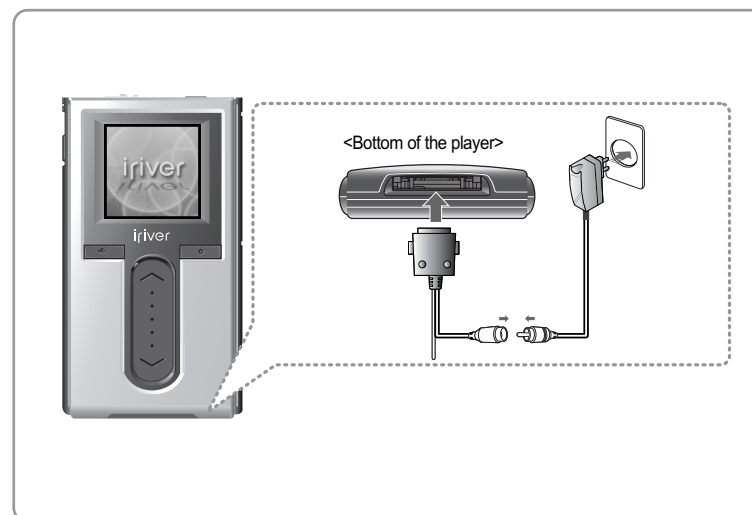
- The tray icon may be hidden in some Windows XP operating system settings. Click the "Display hidden icon" to view the hidden icon.
- Hardware safe removal may not be available while using some applications such as Windows Explorer or Windows Media Player. Please close all applications using the player before the hardware safe removal process.
- In some Windows XP operation system settings, hardware safe removal is temporarily unavailable due to some internal system communication. Wait for a moment and try it again.

Connecting the product

Be sure to use the supplied AC adapter to connect the cable to the player.

Connecting the power – connecting the adapter (player)

1. Connect the supplied cable to the player.
2. Connect the AC adapter to the DC jack on the cable.
3. Connect the AC adapter plug to a power socket.
AC adapter for this product is 100~240V, 50~60Hz.



Note

- If a power source is connected, the charging indicator on the DC jack will illuminate. (The charge indicator will dim after charging is complete.)



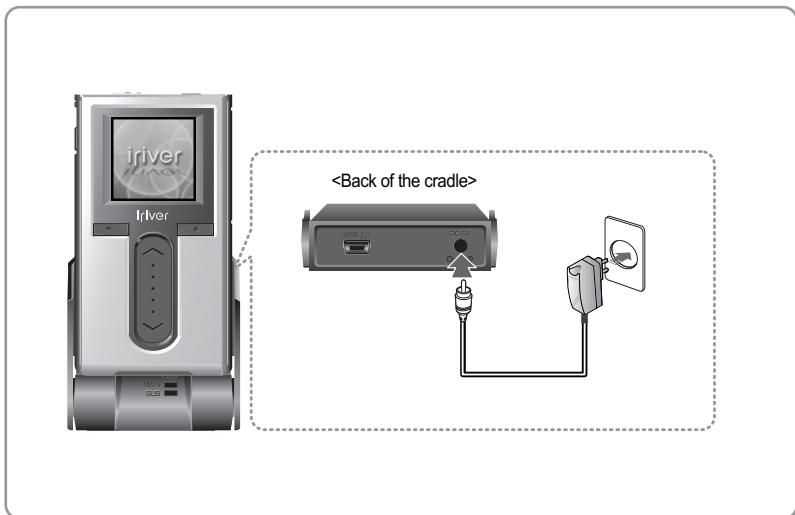
Connecting the product

Be sure to use the supplied AC adapter to connect the cable to the player.

Connecting the power – connecting the adapter (cradle)

(Cradle is an optional accessory.)

1. Put the player into the connection terminal of the cradle.
2. Connect the AC adapter to the cradle's 5.0V DC connector.
3. Connect the AC adapter plug to a power socket.



Note

- If a power source is connected, the charging indicator will illuminate. (The charge indicator will dim after charging is complete.)

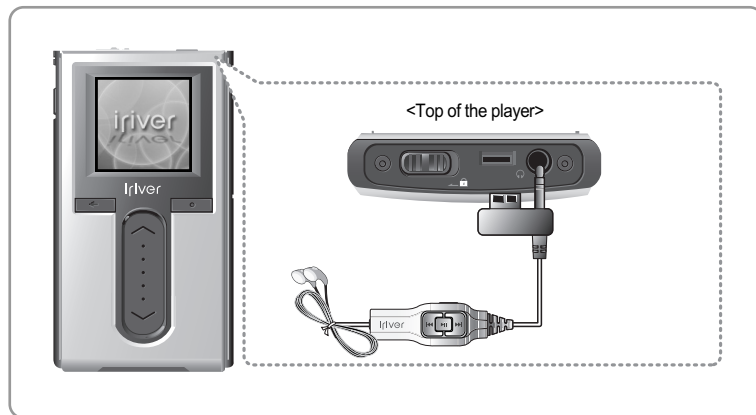


Connecting the product

Connecting earphone/remote control

(Remote control is an optional accessory.)

1. Connect the remote control to the jack on the top of the player.
2. Connect the earphone to the jack of the remote control.



Connecting the product

Connecting the cradle

(Cradle is an optional accessory.)

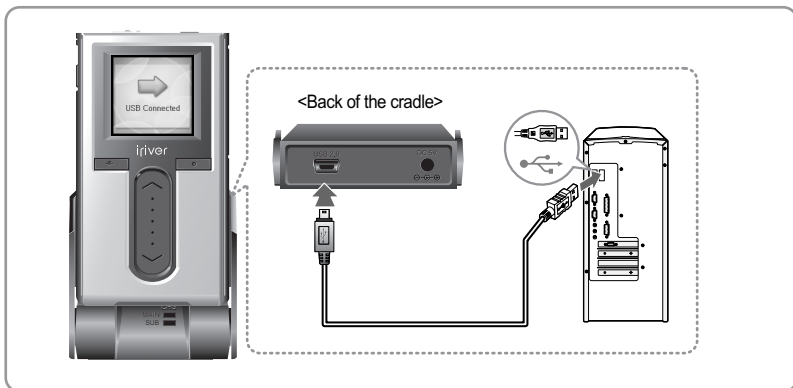
1. Put the player into the connection terminal of the cradle.



Connecting the cradle – Connecting PC

(Cradle is an optional accessory.)

1. Put the player into the connection terminal of the cradle.
2. Connect the USB 2.0 jack of the cradle to a PC with USB cable. (USB cable is an optional accessory.)

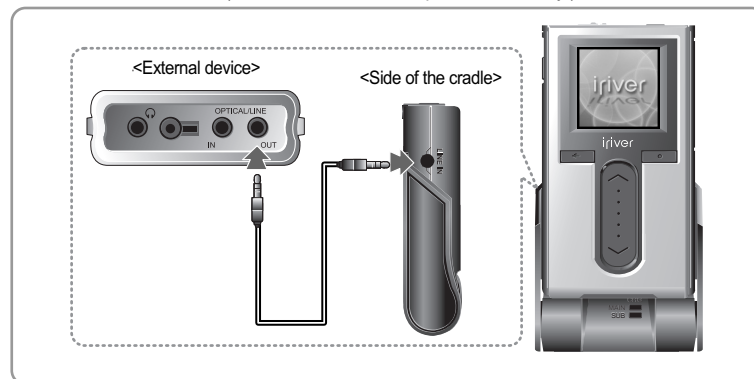


Connecting the product

Connecting the cradle – Line-In connection

(Cradle is an optional accessory.)

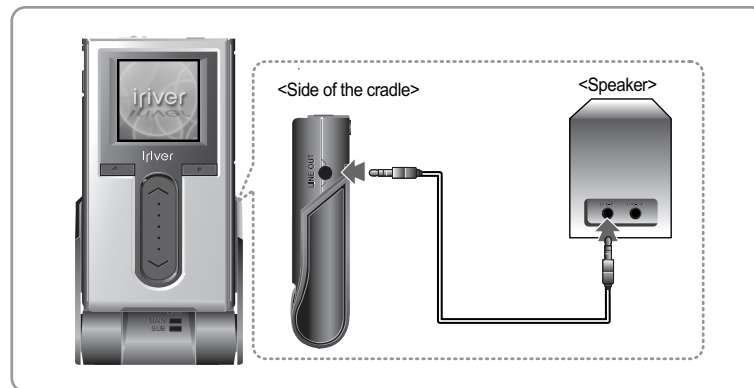
1. Put the player into the connection terminal of the cradle.
2. Connect the Line-in jack of the cradle to the Line-out (or earphone) jack of an external device with a Line-in/out cable. (Line-in/out cable is an optional accessory.)



Connecting the cradle – Line-out connection

(Cradle is an optional accessory.)

1. Put the player into the connection terminal of the cradle.
2. Connect the Line-in jack of the cradle to the Line-out (or earphone) jack of an external device with a Line-in/out cable. (Line-in/out cable is an optional accessory.)





Installing the software

This manual covers the use of the H10 player hardware. For instructions on related software and instructions for getting music on your player, please see the included iriver plus user manual.

Installing iriver plus

1. The program installation process will start automatically after inserting the Installation CD to the PC's CD-ROM drive. If the program installation process does not start automatically, click the "My Computer" icon and run "iriver_setup_full.exe" file in the CD-ROM drive.
2. If the "Installer Language" window appears, select the desired language and click the [OK] button.



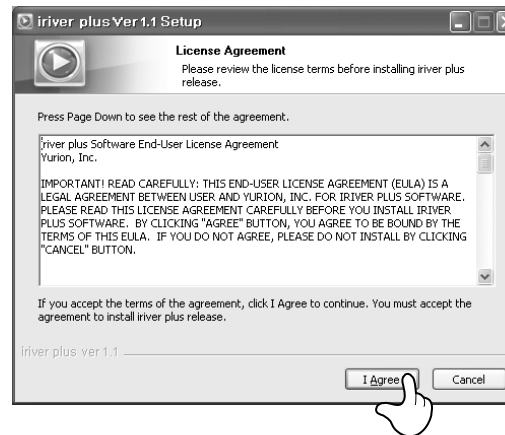
3. Follow the on screen instructions which appear as each window.



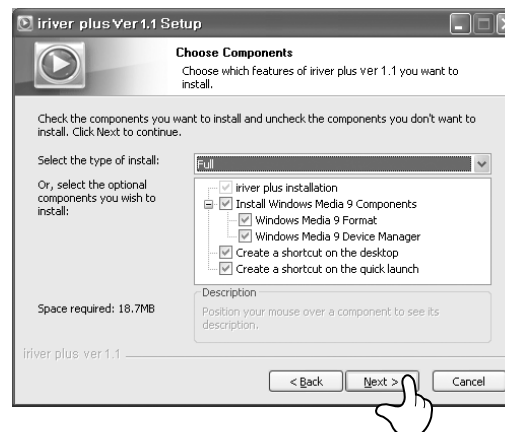
Installing the software

This manual covers the use of the H10 player hardware. For instructions on related software and instructions for getting music on your player, please see the included iriver plus user manual.

4. If the "License Agreement" window appears, click the [I Agree] button.



5. Select the components and click the [Next] button.

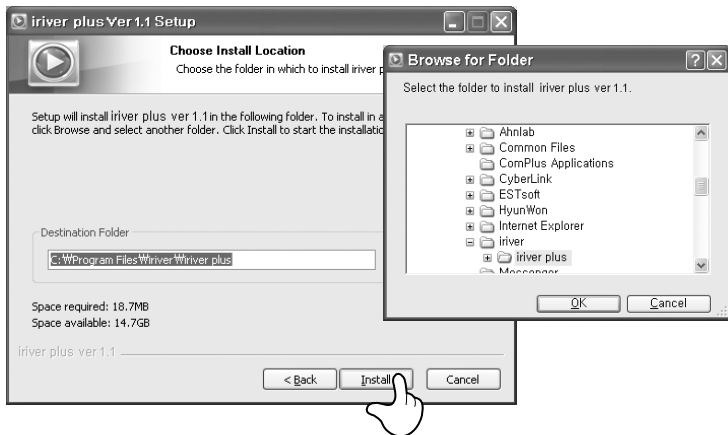




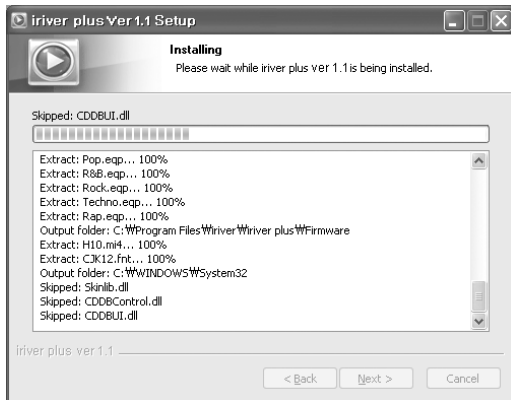
Installing the software

This manual covers the use of the H10 player hardware. For instructions on related software and instructions for getting music on your player, please see the included iriver plus user manual.

6. Select the installation folder and click the [Install] button.



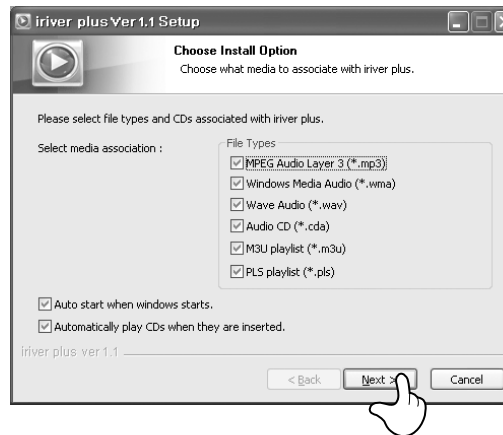
7. The installation process screen appears.



Installing the software

This manual covers the use of the H10 player hardware. For instructions on related software and instructions for getting music on your player, please see the included iriver plus user manual.

8. Select the file type and click the [Next] button.



9. Click the [Finish] button when the installation complete screen is displayed.





Chapter 2 | Quick start

| | |
|---|----|
| Turning on/off the player and Playing music | 30 |
| Controlling volume and changing modes | 31 |

This manual covers the use of the H10 player hardware.
For instructions on related software and instructions for getting
music on your player, please see the included iRiver plus user manual.



Turning on/off the player and playing music

This manual covers the use of the H10 player hardware. For instructions on related software and instructions for getting music on your player, please see the included iriver plus user manual.

Note

- Button image with white background = Press the button quickly.
Button image with black background = Press and hold the button.

Turning on/off the player



1 Turning on the player

Press the [] button.
The initial screen will be displayed.



Note

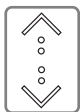
- If the player does not run after pressing the button, check whether the HOLD switch is set to OFF or the battery is discharged.



1 Turning off the player

Press and hold the [] button.
The player will be turned off.

Playing music



1 Select the <MUSIC> mode using the [] scroll and press the [] button when the main screen appears.



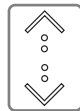
2 After finding the music and press the [] button to play it.

- ▶ : Resumes the previously played title
- : Plays the selected title



Controlling volume and changing modes

Controlling volume

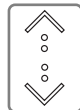


1 Use the [] scroll to control volume during playback.

- ↑ : Volume up
- ↓ : Volume down

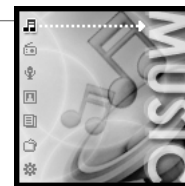


Changing mode

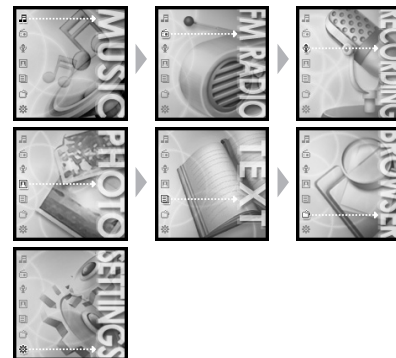


1 Select the mode using the [] scroll when the main menu appears.

There are 7 modes including MUSIC, FM RADIO, RECORDING, PHOTO, TEXT, BROWSER, SETTINGS.



Note



2 Press the [] button to enter the desired mode.



3 If you press and hold the [] button in any screen, you can return to the main menu.



Chapter 3 | Basic operation

| | |
|--|----|
| Playing music | 34 |
| Playing music | 34 |
| Setting up the Play mode | 38 |
| Playlist function | 40 |
| Auto Sync function | 41 |
| Listening to FM radio | 42 |
| Listening to FM radio | 42 |
| Scanning FM radio frequency - Manual search | 43 |
| Scanning FM radio frequency - Auto Scan | 43 |
| Storing FM radio station - Manually | 44 |
| Storing FM radio stations - Automatically | 44 |
| Scanning FM radio frequency - PRESET feature | 45 |
| Erasing FM radio station | 46 |
| Recording | 47 |
| Recording Voice | 47 |
| Line-in recording | 48 |
| Recording FM radio station | 50 |
| Notices for recording | 51 |
| Playing the recorded file | 51 |
| Viewing images | 52 |
| Viewing image file | 52 |
| Getting images on the player | 53 |
| Viewing text | 54 |
| Viewing text file | 54 |
| Getting text files on the player | 56 |
| Browser function | 57 |
| Browser function | 57 |

This manual covers the use of the H10 player hardware. For instructions on related software and instructions for getting music on your player, please see the included iRiver plus user manual.



Playing music

This manual covers the use of the H10 player hardware. For instructions on related software and instructions for getting music on your player, please see the included iriver plus user manual.

Playing music

| | | |
|--|---|--|
| | 1 Press the [] button after releasing the HOLD switch to display the initial screen. | |
| | 2 Select the <MUSIC> mode using the [] scroll from the main menu. | |
| | 3 Press the [] button to display the Search screen. | |

Note

- In case of selecting <Artists>
Select "Artists – Albums – Titles" to search titles.
- In case of selecting <Albums>
Select "Albums – Titles" to search titles.
- In case of selecting <Genres>
Select "Genre - Artists – Albums – Titles" to search titles.
- In case of selecting <Titles>
Select "Titles" to search titles.
- In case of selecting <Playlists>
(Refer to page 40.)



Playing music

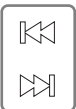
| | | |
|--|---|--|
| | 4 Use the [] scroll the select the item. Example: In case of selecting <Titles> [] : Press it to move to the desired item. [] : Moves to the desired item. [] : Press to return to the previous screen. [] : Press and hold to return to the main menu. | |
| | 5 Press the [] button after selecting the title to play it. During playback, press the [] button to pause playback. Press it again to resume playback. In the Search or main screen, press the [] button to resume the previously played title. | |
| | 6 Use the [] scroll to control volume during playback. ↑ : Volume up ↓ : Volume down | |

Note





Playing music



7 Playing previous/next title

Press the [⏮/⏭] button during playback to play previous / next title.

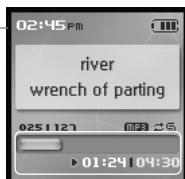
- ⏮ : Plays previous file
- ⏭ : Plays next file



8 Fast-forward / Fast-reverse

Press and hold the [⏮/⏭] button during playback for fast-forward or fast-reverse playback.

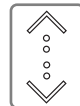
- ⏮ : Fast-reverse
- ⏭ : Fast-forward



Playing music



9 Press the [○] button during playback to display the EQ selection screen.



10 Select the EQ using the [↑/↓] scroll and press the [○] button.

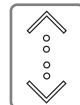


Note

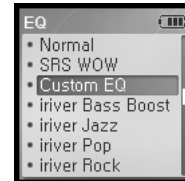
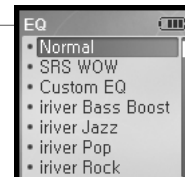
- EQ consists of SRS and 30 Preset EQ.
- To customize SRS and Custom EQ, use the <Sound> menu. (Refer to page 63.)
- SRS uses a combination of Field Width, TruBase, FOCUS and Freq. Boost to enhance sound.
- Custom EQ will be automatically selected after adjusting Custom EQ settings in the <Sound> menu.



11 Press and hold the [●] button during playback to display the MY Rating screen.



12 Select the desired Rating using the [↑/↓] scroll and press the [○] button.



Playing music

Setting up the Play mode

Various Play modes can be used during playback.

| | | |
|--|---|--|
| | <p>1 Select the <SETTINGS> mode using the [/> scroll when the main screen appears.</p> | |
| | <p>2 Press the [> button to display the SETTINGS list screen.</p> | |
| | <p>3 Select <Sound> using the [/> scroll and press the [> button to display the <Sound> list screen.</p> | |
| | <p>4 Move to the <Play Mode> using the [/> scroll.</p> | |
| | <p>5 Press the [> button to display the <Play Mode> list screen.</p> | |

Playing music

| | | |
|--|---|--|
| | <p>6 Select the desired Play mode using the [/> scroll and press the [> button to setup the Play mode.</p> | |
|--|---|--|

Note

■ The Play mode consists of following options.

- : **Repeat**
Plays all titles in the selected category repeatedly.
- : **Repeat 1**
Plays a selected title repeatedly.
- : **Shuffle**
Randomly plays all titles in the selected category and stop.
- : **Shuffle + Repeat**
Randomly plays all titles in the selected category repeatedly.





Playlist function

What is Playlist

"Playlist" is a list of the titles that enables you to manage the titles or other audio files. After creating a playlist for the specific mood or by favorite artist, play it in iriver plus or transfer it to H10 using iriver plus.

Now you can play the music at any time and any place.

For more information, refer to the iriver plus instruction manual.

Note

■ In case of selecting <Playlists>

- My Rating
Plays titles in designated rating order.
- My Favorites
Plays titles by playback frequencies.
- Recently Played
Plays titles in recently played order.
- My Playlists
Plays titles with the Playlist you created in iriver plus.
- Quick List
User programmable on-the-fly playlist.
To load the Quick List:
Locate a title using the <MUSIC> menu.
Press and hold o to add it to the Quick List.
'Added Quick List!' will be displayed.
Repeat to add more titles to the Quick List.
Use the <Playlists> menu to see the Quick List.
Press [●] button to play it!



Auto Sync function

Auto Sync

If you set H10 and iriver plus with Auto Sync function, all music in the iriver plus library will be automatically transferred to H10.

For more information, refer to the iriver plus instruction manual.

- 1** Connect the player to your PC.
iriver plus will detect the player and open automatically.
- 2** Locate the player in the right side of iriver plus.
Right click on the player, a menu will display.
- 3** Click Sync Options.

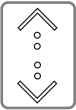




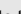




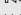

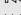

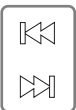

Auto Sync:
Music will be automatically synchronized from iriver plus to the player.

Manual Transfer:
Music must be manually added to the player using iriver plus.



Listening to FM radio

Listening to FM radio

| | | |
|---|---|--|
|  | <p>1 Select the <FM RADIO> mode using the [/] scroll from the main menu.</p> |  |
|  | <p>2 Press the [] button to switch to the FM Radio.</p> |  |
|  | <p>3 Setup the Preset by pressing the [] button and press [/] button to select an FM station.</p> <p> : To previous station  : To next station</p> |  |
|  | |  |





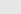
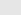

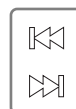

Note

■ In areas where the signal is weak, some channels may be unavailable or reception may be poor.



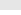








Listening to FM radio

Scanning FM radio frequency – Manual search

| | | |
|---|---|---|
|  | <p>1 If <PRESET> is displayed, press the [] button to disable "Preset" mode, and press the [/] button to increase/decrease the frequency.</p> <p> : Decreases by 0.1 MHz  : Increases by 0.1 MHz</p> |  |
|  | |  |

Scanning FM radio frequency – Auto Scan

| | | |
|--|--|---|
|  | <p>1 If <PRESET> is displayed, press the [] button to disable "Preset" mode and press and hold [/] button to Scan for the previous/next available station.</p> <p> : Moves to the previous available station  : Moves to the next available station</p> |  |
|  | |  |


Note

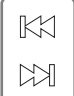
■ If the Preset is set to ON, the AUTO SCAN function cannot be used.




Listening to FM radio

Storing FM radio station - Manually








1 If <PRESET> is displayed, press the [▶] button to disable "Preset" mode, and press the [◀/▶] button to increase/decrease the frequency.


◀ : Decreases frequency
▶ : Increases frequency

2 Press and hold the [▶] button. If all 20 available channels are filled, the station will not be stored.

Note

- Up to 20 channels can be stored.
- Once all 20 channels are filled, new stations can not be stored. Please refer to page 46 to delete a station before storing another.




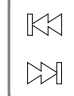




Listening to FM radio

Scanning FM radio frequency – PRESET feature






1 If <PRESET> is not displayed, press the [▶] button to enable "Preset" mode.


2 Press the [◀/▶] button to move to previous/next Preset station.


◀ : Moves to previous Preset station
▶ : Moves to next Preset station

Note

- Only stored Preset stations can be selected.

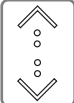







Storing FM radio stations - Automatically

<Auto Preset> will program up to 20 stations automatically in the 20 channels. The <Auto Preset> function can be set in <SETTINGS> - <Extra> - <Auto Preset>.



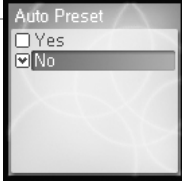


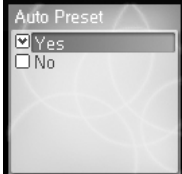
1 If the <Auto Preset> screen appears, move to [Yes] using the [↑/↓] scroll.

2 Press the [○] button. The tuned stations will be stored one by one.

Note

- In areas where the signal is weak, some channels may not be stored.





Listening to FM radio

Erasing FM radio station

1 If <PRESET> is not displayed, press the [▶] button to enable "Preset" mode, and press the [◀/▶] button to select a stored station.

2 Press and hold the [▶] button. The selected station will be erased and the next station will be displayed. Press and hold the [▶] button again to erase the next station.



Note

- If all channels are deleted, PRESET mode will be disabled until another station is stored.

Recording

Recording Voice

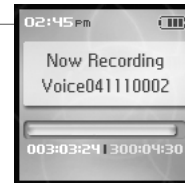
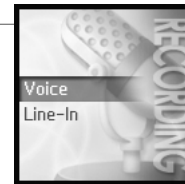
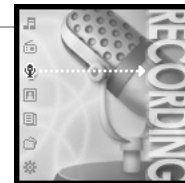
1 Select the <RECORDING> mode using the [↑/↓] scroll from the main menu.

2 Press the [○] button to display the Recording Source screen.

3 Move to <Voice> using the [↑/↓] scroll and confirm it by pressing the [○] button.

4 Press the [○] button to start recording.

5 Press the [○] button to stop recording.



Note

- Volume control is not available while recording.
- Keep player at least 12 inches from the recording source to avoid distortion.
- You can change the voice setting in the <Voice Setting> menu. (Refer to page 66.)

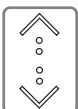
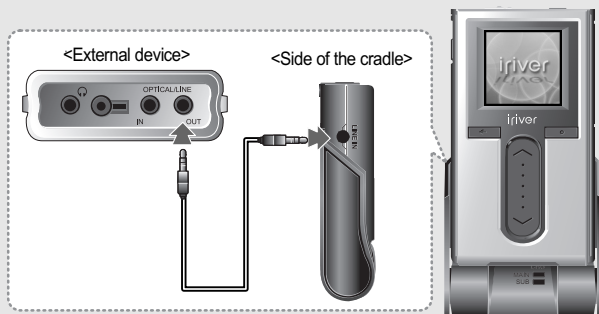


Recording

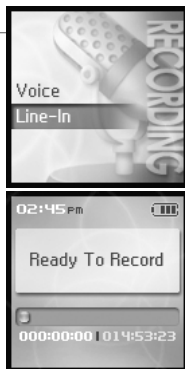
Line-in recording is only available using the optional cradle.

Line-In recording

1 After connecting the player and cradle, connect the cradle's Line-In jack to the Line-Out (or earphone) jack of an external device using the Line-In/Out connection cable.



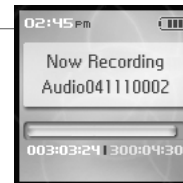
2 In the Recording Source screen, move to <Line-In> using the [↑/↓] scroll and confirm it by pressing the [○] button.



Recording



3 Begin playback on the source. Then press the [○] button to start recording.



4 Press the [○] button to stop recording.

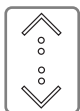
Note

- Volume control is not available while recording.
- You can change the recording quality and volume in the <Line-In Setting> and <Line-In Volume> menus. (Refer to page 67.)



Recording

Recording FM radio station



- 1 Select the <FM RADIO> mode using the [\uparrow / \downarrow] scroll from the main menu.



- 2 Press the [○] button to switch to Radio mode.



- 3 Press and hold the [●] button to record radio broadcasting while listening.



- 4 Press the [○] button to stop recording.

Note

- Volume control is not available while recording.



Recording

Notices for recording

Note

- Recording is automatically stopped if :
 - The player's memory is full.
 - The battery is low.

Playing the recorded file



- 1 Press the [▶||] button in recording standby mode to play the recorded file.



Note

- The recorded file is saved in following locations depending on the SOURCE.

Voice

My Recordings\Voice\VoiceYYMMDDXXX.MP3

Line In

My Recordings\Audio\AudioYYMMDDXXX.MP3

Tuner

My Recordings\Tuner\TunerYYMMDDXXX.MP3

(YYMMDD - Y : Year, M : Month, D : Day)

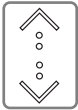
- Use the <BROWSER> menu to select and play files.







Viewing images


Viewing image supports JPG file.


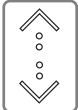
Viewing image file



- 



1 Select the <PHOTO> mode using the [/] scroll from the main menu.

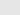

- 


2 Press the [] button to display the Image list screen.


- 

3 Move to the desired image file using the [/] scroll in the Image list screen.


- 

4 Press the [] button to display the Image screen.




Note


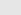
- Loading time for large images may take longer.
- The Progressive JPG is not supported in the Viewing image file function.
 What is Progressive JPG?
 Progressive JPG divides the file into a series of scans. The first scan shows the image at the equivalent of a very low quality setting, and therefore it takes very little space. Following scans gradually improve the quality.


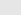


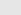
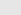
Viewing images


Viewing image supports JPG file.



5 Press the [/] button to move to previous/next image.

 : Moves to previous image
 : Moves to next image

Press the [] button to start slide show.
 To stop the slide show, press the [] button again.



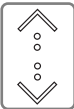
Getting images on the player

- 1** Connect the player and PC using the cable supplied with the player and power it on. (Refer to page 17.)
- 2** Open My Computer :
 a. Windows XP : Start - My Computer
 b. Windows 2000 : Double Click the 'My Computer' icon on your desktop.
- 3** Locate your image files, usually found in "My Documents" then "My Pictures", keep this folder open.
- 4** Open a second My Computer window.
- 5** Double click on the H10 device then double click on the "Media" folder.
- 6** To get images on the player, click and drag the image files from your PC to the "PHOTO" folder on the H10.
- 7** A progress window will appear while files are copying.
- 8** Disconnect the USB cable once all copying has finished.





Viewing text

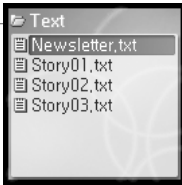
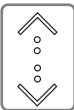
Viewing text file

- 

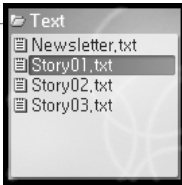

1 Select the <TEXT> mode using the [↑/↓] scroll when the main screen appears.


- 

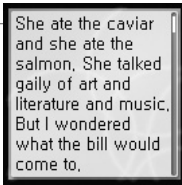
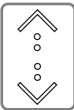
2 Press the [○] button to display the Text list screen.


- 

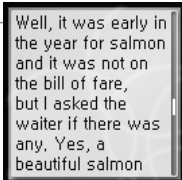
3 Move to the desired text file using the [↑/↓] scroll in the Text list screen.


- 

4 Press the [○] button to display the Text screen.

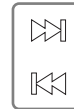

- 

5 Use the [↑/↓] scroll to move to the previous/next line during reading text.



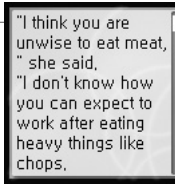



Viewing text

- 

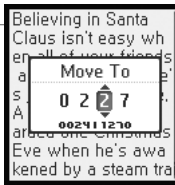
6 Use the [⏪/⏩] scroll to move to the previous/next page during reading text.

⏪ : Page up
⏩ : Page down


- 

7 Press the [○] button while viewing text to move to the desired page.

[⏪/⏩] : Selects the location
[↑/↓] : Selects the number
[○] : Moves to the desired page





Viewing text

Getting text files on the player

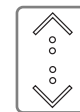
- 1 Connect the player and PC using the cable supplied with the player and power it on. (Refer to page 17.)
- 2 Open My Computer :
 - a. Windows XP : Start - My Computer
 - b. Windows 2000 : Double Click the 'My Computer' icon on your desktop.
- 3 Locate your text (.TXT) files, keep this folder open.
- 4 Open a second My Computer window.
- 5 Double click on the H10 device then double click on the "Media" folder.
- 6 To get text on the player, click and drag the text files from your PC to the "TEXT" folder on the H10.
- 7 A progress window will appear while files are copying.
- 8 Disconnect the USB cable once all copying has finished.



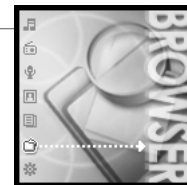
Browser function

Browser function

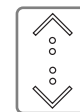
The Browser allows you to navigate all the files on the player. You can play titles, view images, or display text files without switching modes. Several advanced features of each mode will not be available, such as the image slide show, Artist and Genre searching, etc.



- 1 Select the <BROWSER> mode using the [↑/↓] scroll on the main menu.



- 2 Press the [○] button to display all files in the player as a tree view.



- 3 Use the [↑/↓], [○] and [←] buttons to navigate through all the files on the player.





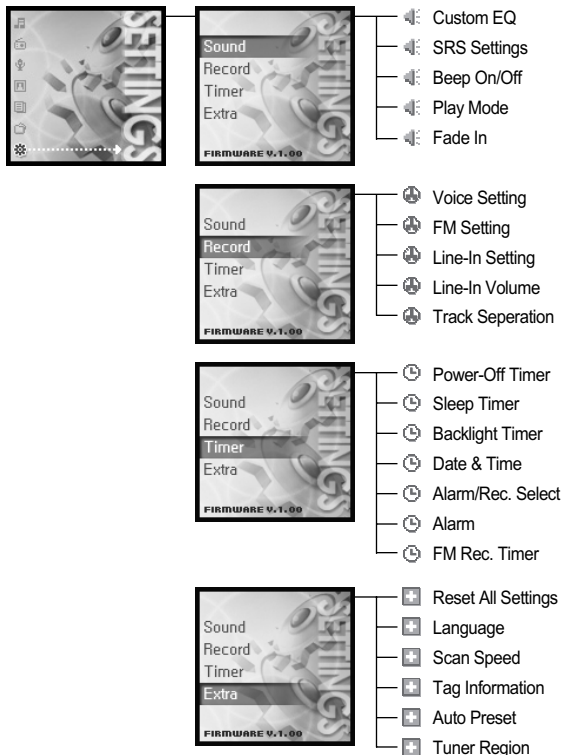
Chapter 4 | Useful features

| | |
|---|----|
| Settings Menu..... | 60 |
| Settings menu navigation | 61 |
| Changing menu | 61 |
| Entering the sub menu | 61 |
| Customizing the function settings | 62 |
| Exit the sub menu | 62 |
| Menu settings | 63 |
| Sound | 63 |
| Record | 66 |
| Timer..... | 69 |
| Extra | 73 |



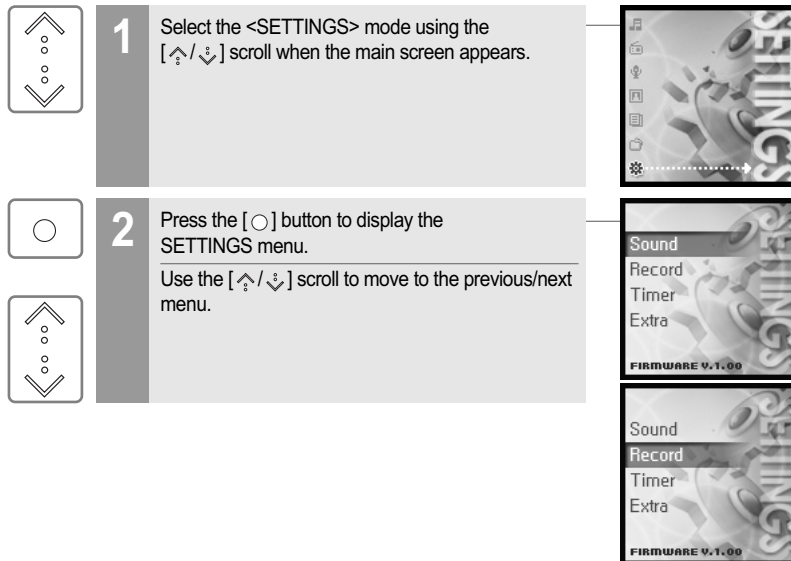
Settings Menu

Function control is subject to change with different firmware versions. User can configure their own settings.

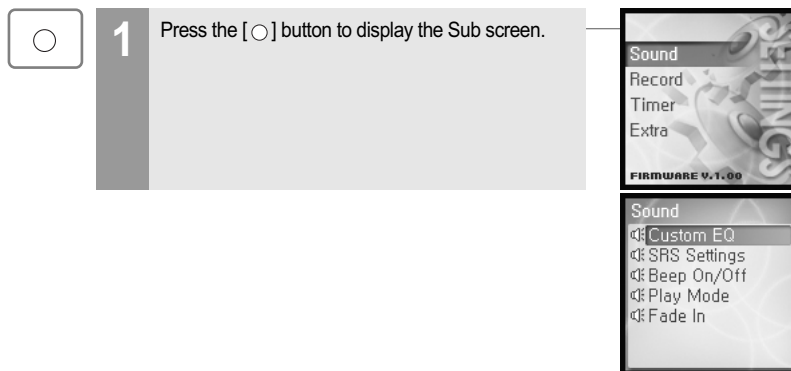


Settings menu navigation

Changing menu



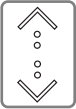
Entering the sub menu







Settings menu navigation


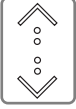

Customizing the function settings

- 


1 Use the [\uparrow/\downarrow] scroll on the main menu.


- 


2 Press the [\bigcirc] button to display the contents of that sub menu.


- 



3 Press the [\uparrow/\downarrow , \bigcirc] button to customize the function setting.




Exit the sub menu

- 

1 Press the [\leftarrow] button to exit the sub menu.



Press and hold the [\leftarrow] button to return to the main menu.




Menu settings

Sound

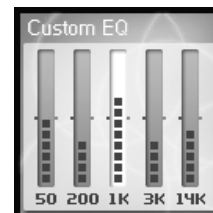
1. Custom EQ

Various frequency bands can be selected and customized.

Each frequency level is from -12dB to 12dB in steps of 2dB .

[\bigcirc] : Changes frequency band

[\uparrow/\downarrow] : Selects frequency level



2. SRS Settings

Sets the level of 3D effect.

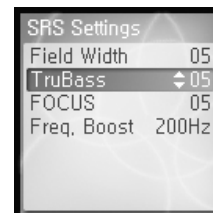
There are 4 types of 3D effect including Field Width, TruBass, FOCUS and Freq. Boost.

Field Width : Sets the Field width value.

TruBass : Sets the Trubass value.

FOCUS : Sets the sound resolution.

Freq. Boost : Sets the sound boost value.





Menu settings

3. Beep On/Off

Sets the beep volume for moving cursor.

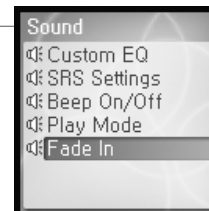
Select <On> or <Off> using the [\uparrow / \downarrow] scroll and press the [\square] button to confirm it.



Menu settings

5. Fade In

When activated, volume increases gradually at playback mode. You can prevent sudden loudness when you play music file at the stop mode.



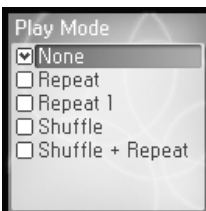
4. Play Mode

Sets the Play mode.

(For more information about the Play mode, refer to page 38.)

The Play mode can be changed only in the <SETTINGS> – <Sound> – <Play Mode>.

Select the Play mode using the [\uparrow / \downarrow] scroll and press the [\square] button to confirm it.





Menu settings

Record

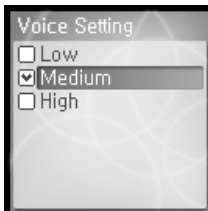
1. Voice Setting

Sets the quality of voice recording.

Select <Low>, <Medium>, <High> using the [\uparrow / \downarrow] scroll and press the [\circ] button to confirm it.

The available recording times depending on the recording qualities are as follows.

| | |
|--------|---------------------------|
| Low | : 338 hours |
| Medium | : 169 hours |
| High | : 84 hours and 30 minutes |



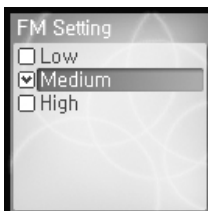
2. FM Setting

Sets the quality of FM recording.

Select <Low>, <Medium>, <High> using the [\uparrow / \downarrow] scroll and press the [\circ] button to confirm it.

The available recording times depending on the recording qualities are as follows.

| | |
|--------|---------------------------|
| Low | : 338 hours |
| Medium | : 169 hours |
| High | : 84 hours and 30 minutes |



Menu settings

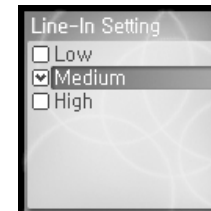
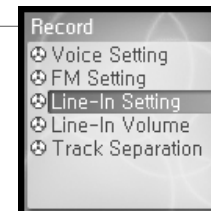
3. Line-In Setting

Sets the quality for recording from external device.

Select <Low>, <Medium>, <High> using the [\uparrow / \downarrow] scroll and press the [\circ] button to confirm it.

The available recording times depending on the recording qualities are as follows.

| | |
|--------|---------------------------|
| Low | : 84 hours and 30 minutes |
| Medium | : 56 hours and 20 minutes |
| High | : 33 hours and 50 minutes |

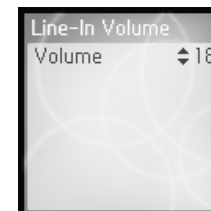


4. Line-In Volume

Controls volume for recording from external device.

<1 to 21> levels are available.

Select the volume using the [\uparrow / \downarrow] scroll and press the [\circ] button to confirm it.





Menu settings

5. Track Separation

While recording from external device, if no sound occurs for around 1.5 minutes, a new file will be created.

If you use the <Track Separation> function with connecting external devices such as CD or tape, each track will be save to an individual file.

Select <On> or <Off> using the [/] scroll and press the [] button to confirm it.



Menu settings

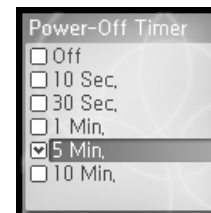
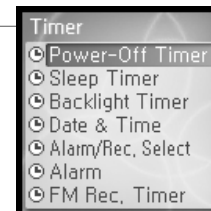
Timer

1. Power-Off Timer

Automatically turns the power off at stop mode after fixed time.

The available time settings are <Off>, <10 Sec.>, <30 Sec.>, <1 Min.>, <5 Min.>, <10 Min.>.

Select the time using the [/] scroll and press the [] button to confirm it.

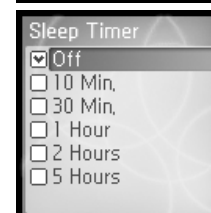


2. Sleep Timer

Automatically turns the power off after fixed time.

The available time settings are <Off>, <10 Min.>, <30 Min.>, <1 Hour>, <2 Hours>, <5 Hours> and if it is set to <Off>, the power will not be turned off.

Select the time using the [/] scroll and press the [] button to confirm it.





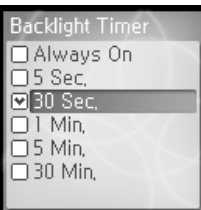
Menu settings

3. Backlight Timer

Sets the time that the backlight stays on.

The available time settings are <Always On>, <5 Sec.>, <30 Sec.>, <1 Min.>, <5 Min.>, <30 Min.>.

Select the time using the [↑/↓] scroll and press the [○] button to confirm it.



4. Date & Time

Sets the current time.

[○] : Selects item

[↑/↓] : Sets the current time



Menu settings

5. Alarm/Rec. Select

Sets the time to activate the alarm function or the FM Rec Timer.

Select <Off>, <Alarm>, <FM Rec.> using the [↑/↓] scroll and press the [○] button to confirm it.

Note

■ Be sure to set the date and time prior to using timed FM recording or the Alarm function.

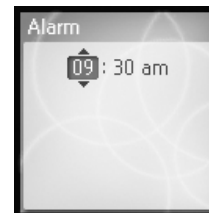
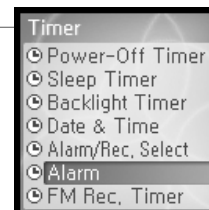


6. Alarm

Sets the time to activate the alarm function.

[○] : Selects item

[↑/↓] : Sets the time for alarm





Menu settings

7. FM Rec. Timer

Sets the time to activate FM radio recording.

[○] : Selects item

[↑/↓] : Sets the time for recording



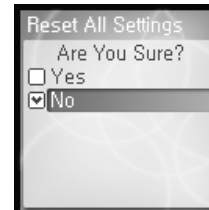
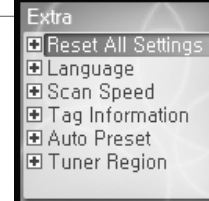
Menu settings

Extra

1. Reset All Settings

Initializes all settings to original factory setting (if Yes is selected).

Select <Yes> or <No> using the [↑/↓] scroll and press the [○] button to confirm it.

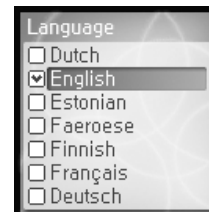
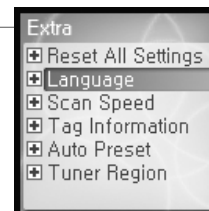


2. Language

Select the language to match the language of your music ID3 tags for proper display.

40 languages are supported in this function.

Select the language using the [↑/↓] scroll and press the [○] button to confirm it.





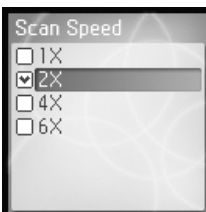
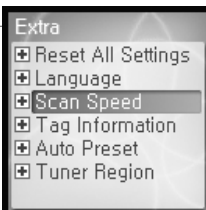
Menu settings

3. Scan Speed

Sets the speed of fast scan.

The available speed range are <1X>, <2X>, <4X>, <6X>.

Select the speed using the [/] scroll and press the [] button to confirm it.



4. Tag Information

Displays file information with ID3 Tag information and changes the configuration of Tag information.

<Off>, only the file name will display.

Select <On> or <Off> using the [/] scroll and press the [] button to confirm it.

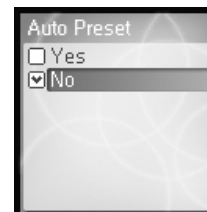
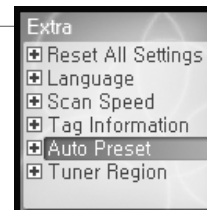


Menu settings

5. Auto Preset

You can tune and store FM radio stations automatically.

Select <Yes> or <No> using the [/] scroll and press the [] button to confirm it.



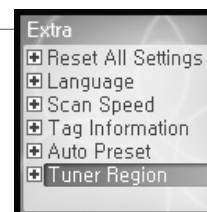
6. Tuner Region

You can tune the FM radio station and choose the step by the region. Set the tuner region to match your area for best reception.

The available regions are <Korea>, <Japan>, <Europe> and <USA>.

[/] : Sets up the available region

[] : Selects the region





Chapter 5 | Additional information

| | |
|------------------------|----|
| Firmware upgrade | 78 |
| Initializing H10 | 79 |
| Troubleshooting | 80 |



Firmware upgrade

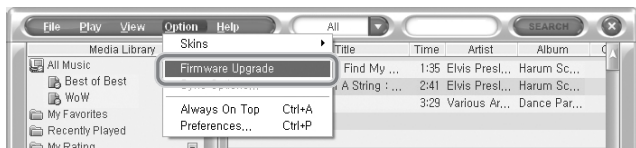
What is firmware ?

It is the operating system that works in the H10.
iriver provides you with the latest and best features through Firmware upgrade.

You can choose manual or automatic upgrade function.
For information on automatic upgrade, refer to the iriver plus instruction manual.

Manual firmware upgrade

- 1 Select [Option - Firmware Upgrade] from the menu in iriver plus.



Note

- Do not disconnect H10 during firmware upgrade.
- Internet must be connected for the "Firmware Update" function.
- Change to "Player must be connected to the PC for Firmware Upgrade function."



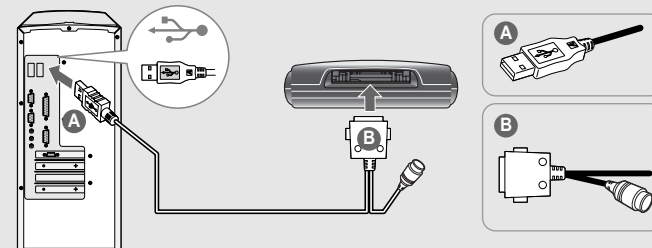
Initializing H10

Initializing H10

Please initialize H10 player in the following cases.
All music, pictures, text, another data will be erased from the player during this initialization.

- if there appears to be corruption on the internal hard drive.
- if a error message displays and the player will not boot properly.

- 1 Connect the player and PC using the cable supplied with the player.



- 2 Open iriver plus.
Select [Option-Portable Device Initialization].



- 3 Click [Start] to begin initializing.



Troubleshooting

| Symptom | Possible solutions |
|--|--|
| The player will not power on. | <ul style="list-style-type: none"> ■ Check whether the HOLD switch on the player is ON. (Switch it to OFF position.) ■ Check whether the battery is discharged. ■ Check it again after connecting the AC adapter. ■ Check whether the battery is connected correctly. ■ If the power is still turned on after charging, please contact iriver customer support. |
| No sound during playback. | <ul style="list-style-type: none"> ■ Check whether volume is set to "0". ■ Connect the earphones plug firmly. |
| Buttons do not work. | <ul style="list-style-type: none"> ■ Check whether the HOLD switch on the player or remote control is ON. Switch it to OFF position and try it again. |
| Noise and distortion during playback. | <ul style="list-style-type: none"> ■ Check whether the plug or connection jack of earphone is dirty. Dirty connectors may cause noise. ■ Check whether the music file is corrupted. Check it again with other music file. If the file data is corrupted, noise or distortion may result. |
| Characters in LCD are corrupted. | <ul style="list-style-type: none"> ■ Check whether the right language is selected. The language setting can be changed in <SETTINGS> - <Extra> - <Language>. |



Troubleshooting

| Symptom | Possible solutions |
|--|--|
| Poor radio reception. | <ul style="list-style-type: none"> ■ Check whether an earphone is connected. Earphone cord functions as an antenna during radio reception. Radio reception will be poor unless an earphone is attached to the player. ■ Adjust the position of the player and earphone. ■ Turn off any nearby electronic equipment to avoid possible interference. If it is effective, move and use the player away from those sources. |
| Failed download. | <ul style="list-style-type: none"> ■ Check whether the USB cable is firmly connected. ■ Check whether the AC adapter is connected. If the remaining battery amount is not sufficient, download may not be available. |
| The titles saved in H10 are not played. | <ul style="list-style-type: none"> ■ Audio titles listed under <MUSIC> will only play if they were loaded using iriver plus or Windows Media Player. Use the BROWSER function to locate and play your files. ■ If the files still do not play, it is possible they are in a format not compatible with this player. Please consult with the program or service used to originally retrieve the titles. |



Chapter 6 I Appendix

| | |
|----------------------|----|
| Specifications | 84 |
| FCC | 85 |



Specifications

| Category | Item | Specifications |
|---------------------|-------------------------|---|
| HDD | Capacity | 5GB* |
| | File system | FAT 32 |
| PC | Supported OS | Windows 2000 / XP |
| | Interface | USB 2.0 |
| Audio | Frequency range | 20Hz~20KHz |
| | Headphone output | 18mW (L) + 18mW (R) at 16Ω Max. Volume |
| | S/N ratio | 90dB(MP3) |
| | Frequency range | ± 3dB |
| | No. of channels | Stereo (L/R) |
| FM radio | FM frequency range | 87.5MHz ~ 108MHz |
| | S/N ratio | 60dB |
| | Antenna | Headphone / Earphone cord antenna |
| File support | File type | MP3(MPEG 1/2/2.5 Layer3), WMA, TXT, JPG** |
| | Bit Rate | MP3 : 32Kbps~320Kbps WMA : 32Kbps~192Kbps |
| | Tag | ID3 V1, ID3 V2 2.0, ID3 V2 3.0, ID3 V2 4.0 |
| Power supply | AC Adaptor | DC 5.0V, 2.0A |
| | Battery | Rechargeable battery |
| General | Dimensions | 95.5 X 54.6 X 15 (mm) |
| | Weight | Approx. 96.2 g |
| | LCD | 1.5" 260,000 TFT LCD |
| | Operational temperature | -5 °C ~ 40 °C |
| | Max. playtime | Approx. 12 hours (When used with 128 Kbps, MP3, 20 Volume level, EQ Normal, LCD off) |

* 1GB = 1,000,000,000 Bytes
Not all memory available for storage.

** The Progressive JPG is not supported.



FCC

Federal Communications Commission (FCC)

The device manufactured and found to comply with limits for a Class B computing device according to the specifications in FCC rules Part 15. Operation is subject to the following two conditions;

1. This device may not cause harmful interference.
2. This device must accept any interference received, including interference that may cause undesired operation.
3. If your device needs repairs, you must arrange for the manufacturer to make them if you are to keep the device's FCC registration valid.

This equipment, like other electronic equipment, generates and uses radio frequency energy. If not installed and used according to the instructions in this manual, this equipment may cause interference with your radio and television reception.

If you think this equipment is causing interference with your radio or television reception, try turning the equipment off and on. If the interference problems stop when the equipment is switched off, then the equipment is probably causing the interference. You may be able to correct the problem by doing one or more of the following:

- Adjust the position of the radio or TV antenna
- Move away the device from the radio or TV

If necessary, consult your dealer or an experienced radio or television technician. You may find this booklet helpful: "How to Identify and Resolve Radio and TV Interference Problems" (Stock No. 004-000-00345-4), prepared by the FCC and available from the U.S Government Printing Office, Washington, DC 20402. See individual devices FCC ID and registration numbers.

For the customers in Europe



The CE mark on the CD player is valid only for products marketed in the European Union.

