

Mplayer

Cute·Simple·Friendly

© Disney



Chapter 1

Getting Started

- Components 4
- Locating the Controls 5
- Installing iriver plus 3 6



Chapter 2

Basic Operations

- Charging the Battery 9
- Turning on / off the Player 10
- Playing Music Files 11
- Connecting Products 12



Chapter 3

Using the Mplayer

- Music 19



Chapter 4

Other Information

- Using iriver plus 3 25
- Copyrights / Certification /
Trademarks / Limited Liability 29
- Safety Instructions 30
- Troubleshooting 32



iriver

CONTENTS

Chapter 1

Getting Started

Components	4
Locating the Controls	5
Installing iriver plus 3	6



Components

Components are subject to change without notice and may vary from images shown.



Mplayer



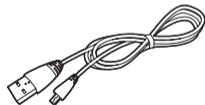
Earphones



Quick Start Guide & Warranty Card

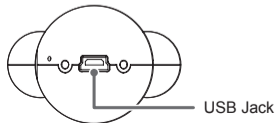
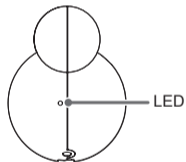
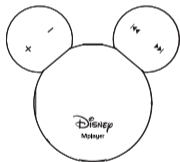
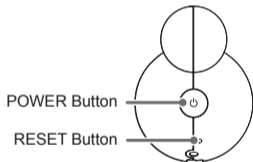
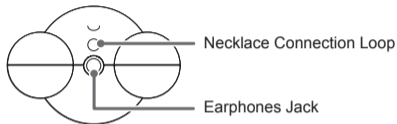


Installation CD



USB Cable

Locating the Controls





Installing iriver plus 3

iriver plus 3 is an integrated software that efficiently manages music files.
iriver plus 3 gives you freedom to transfer music files from PC to the player.

Mplayer

1. Insert the installation CD to your PC to display the installation process screen.
2. Click [Install] and complete the installation process following the on-screen instructions.

Note

- Minimum requirements for using iriver plus 3
 - Intel® Pentium®II 233MHz or higher processor speed • Windows 2000/XP • 64MB or above memory
 - 30MB or above hard disk space • 16bit enabled speaker and sound card
 - Microsoft Internet Explorer version 6.0 or later • SVGA or high resolution monitor (1024x768 resolution or higher)
- For more information on using iriver plus 3, refer to page 23~26.



iriver

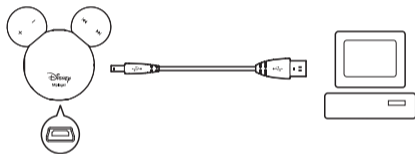
Chapter 2

Basic Operations

Charging the Battery	9
Turning on / off the Player	10
Playing Music Files	11
Connecting Products	
Connecting earphones to the Mplayer	12
Connecting earphones while playing music	12
Connecting necklace	13
Disconnecting extension earphones from main line	13
Connecting the Mplayer to your PC	14
Copying file/folder (Using as a removable disk)	15
Disconnecting the Mplayer from your PC	16

Charging the Battery

1. Press the [⏻] button on the product to turn it on.
2. Turn on your PC and connect the Mplayer to it using the USB cable.



Note

- It is recommended to use provided USB cable only. Otherwise, the device may malfunction.
- Check if the Mplayer is connected to a high-power USB 2.0 port. Some low-power USB ports built in some peripheral devices such as certain keyboards and USD hub without integrated power may not provide enough power to charge.
- If the computer is in sleep mode, the Mplayer may not be charged in some computers.
- The battery will be 80-percent charged in about 1.5 hour (with red LED), and fully charged within about 2.5 hours (with green LED).
- You cannot play music while charging the product.

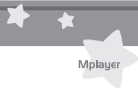


Turning on / off the Player

1. Press the [⏻] button to turn on the product.
You will hear a beep with green LED.
2. Press the [⏻] button again to turn off the product.
You will hear a beep with red LED.

Note

- If the Mplayer does not respond when pressing the [⏻] button, check to see if the battery is properly charged.
- If remaining battery power is not sufficient, the power will be automatically turned off after 3 beeps.



Playing Music Files

1. Press the [⏪] button to play music file.
You will hear a beep with green LED.

Note

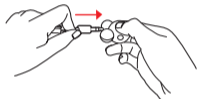
- Music playback will be resumed when you turn the product off and on again while listening to music.
- It only supports FAT16 format. (FAT32 format is not available.)



Connecting Products

| Connecting earphones to the Mplayer |

1. Connect the earphones to the jack of the product.



| Connecting earphones while playing music |

1. If you disconnect the earphones while listening to music, music playback will be stopped and key input will be disabled. However, the [⏮] button will be still enabled.
2. Reconnect the earphones to resume music playback.

Note

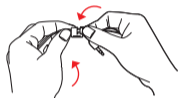
- To use the 'automatic playback resuming' function, you need to reconnect the earphones within 20 minutes after disconnection. After 20 minutes, the product will be automatically turned off.



Connecting Products

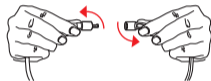
| Connecting necklace |

1. Twist the detachable part of necklace to separate it into two pieces.

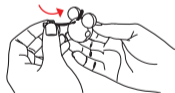


| Disconnecting extension earphones from main line |

1. Twist the detachable part of earphones to separate it into two pieces.



2. Hold the separated part of necklace and push it into the direction of arrow.

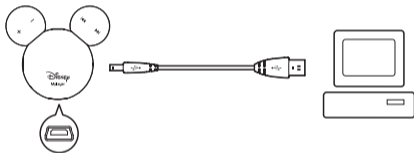




Connecting Products

| Connecting the Mplayer to your PC |

1. Press the [⏻] button on the product to turn it on.
2. Turn on your PC and connect the Mplayer to it using the USB cable.

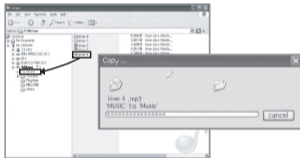


Connecting Products

| Copying file / folder (Using as a removable disk) |

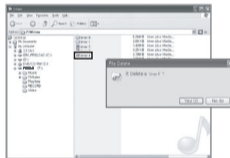
Copying file/folder to the product

1. Select the file / folder in your PC and drag & drop it to the drive which appears as a product.



Deleting file/folder from the product

1. After selecting the file / folder, click it with the right mouse button and select [Delete].
2. Click [Yes] in the [Confirm File Delete / Confirm Folder Delete] popup window to delete the file / folder.



Note

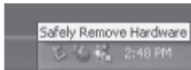
- Always properly connect the USB cable.
- While transferring data using the USB cable, the red LED will be flashed.
Do not turn off the product or disconnect the USB cable to protect your data from damage.



Connecting Products

| Disconnecting the Mplayer from your PC |

1. Click the icon on the taskbar to disconnect the product using the “Safely Remove Hardware” menu.
2. Click the [Stop] button to confirm disconnection.



Note

- The icon on the taskbar might be hidden in some operating systems such as Windows XP. Click “Show hidden icons” to display the hidden icon.
- The “Safely Remove Hardware” may not be available while using some applications such as Windows Explorer or Windows Media Player. Close all applications first before performing the “Safely Remove Hardware”.
- If the “Safely Remove Hardware” is not performed properly, try it again after a few minutes.



iriver

Chapter 3

Using the Mplayer

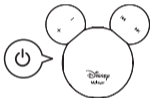
Music	19
Playing Music Files	19
Listening to Music	20
Selecting additional functions	21



Music

| Playing Music Files |

1. Press the [⏪] button to play music file.
You will hear a beep with green LED.



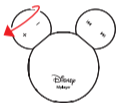
Note

- If there is a music file to play when you press the [⏪] button, the previous track will be played.
If not, you will hear beeps with 2-second interval.
- If there is any error while playing music, the next track will be played after 2 beeps.

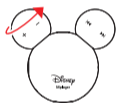
Music

| Listening to Music |

1. To control the volume while playing, turn the [+/-] button to left or right.

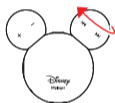


[Volume +]

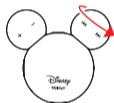


[Volume -]

2. To play previous / next music while playing, turn the [⏮/⏭] button to left or right.



[Previous track]



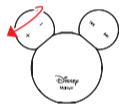
[Next track]

3. To use fast reverse / fast forward function, turn and hold the [⏮/⏭] button to left or right.

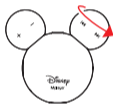
Music

| Selecting additional functions (Shuffle On / Off) |

1. Turn the [+>] buttons shortly to left / right together to activate the function. You will hear a beep.



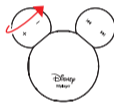
+



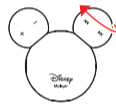
[Volume +]

[Next track]

1. Turn the [-<] buttons shortly to left / right together to activate the function. You will hear a beep.



+



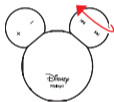
[Volume -]

[Previous track]

Music

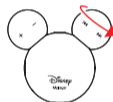
| Selecting additional functions (Moving to next / previous directory) |

1. While playing music, turn the [⏮] button shortly to left, then turn and hold it again to the same direction within 2 seconds to play the first track in the previous directory. You will hear a beep.



[Previous track]

2. While playing music, turn the [⏭] button shortly to right, then turn and hold it again to the same direction within 2 seconds to play the first track in the next directory. You will hear a beep.



[Next track]



iriver

Chapter 4

Other Information

Using iriver plus 3		Copyrights / Certification / Trademarks / Limited Liability	29
Adding Media to Library	25	Safety Instructions	
Ripping Songs from a CD	25	Product Safety	30
Transferring Media to the Mplayer		Others	31
- Using iriver plus 3	26	Troubleshooting	32
- Using Windows Explorer	26	Please check out!	32
Changing Contents Playback Order in the Mplayer	27		
Initializing Disk	28		
Upgrading Firmware	28		



Using iriver plus 3

| Adding Media to Library |

1. When you run iriver plus 3 for the first time, the Add Media Wizard will start.
2. Follow the on-screen instructions on the computer to add music files to the library.

| Ripping Songs from a CD |

1. Insert an audio CD into the CD drive and run iriver plus 3.
2. Click [CD Ripping] in bottom left of iriver plus 3. Choose tracks on the CD that you want to be ripped and click [Start Ripping].
3. After ripping song, select the [All Music] to check whether the ripped song is added to the library.



Using iriver plus 3

| Transferring Media to the Mplayer |

Using iriver plus 3

1. Connect the product to the USB jack of your PC using the USB cable and run iriver plus 3.
2. Select the checkbox beside the file to transfer and click [Ⓜ].
3. The selected file starts to transfer and the progress status is displayed in the Status window on bottom left.
4. Now you can find the selected music in the folder.

Using Windows Explorer

1. Connect the product to the USB jack of your PC using the USB cable.
2. After selecting the file/folder in your PC, drag & drop it to the drive which appears as the product.



Using iriver plus 3

| Changing Contents Playback Order in the Mplayer |

1. Connect the product to the USB jack of your PC using the USB cable and run iriver plus 3.
2. Select the checkbox beside the file to transfer and click [OK].
3. Click the folder with right mouse button to change playback order.
4. Move the file using the Up / Down arrows and click [OK].

Note

- The Mplayer supports various media formats as shown below.

Type	Extension	Format
Music	MP3, WMA, ASF	8 ~ 320kbps

- The Mplayer recognizes a total of 400 folders (8 depths), and a total of 900 music files.



Using iriver plus 3

| Initializing Disk |

1. Connect the product to the USB jack of your PC using the USB cable and run iriver plus 3.
2. Select [Tools > Portable Device > Initialize Disk] and click [Start] when the message to confirm initialization appears.
3. The initialization process is completed and the product is disconnected from your PC.

Note

- You need to backup the necessary files before initialization as formatted files cannot be recovered.

| Upgrading Firmware |

1. After connecting the product to the USB jack of your PC using the USB cable, run iriver plus 3. The PC should be connected to internet.
2. Select [Tools > Portable Device > Firmware Upgrade] and complete the upgrade process following the on-screen instructions.

Note

- Do not disconnect the product from PC while downloading firmware upgrade file. After the download is completed, disconnect the cable to activate the firmware upgrade.
- During firmware upgrade, the amber LED light will be turned on.
- Do not operate the product in this process. It may cause a malfunction.
- If you are using the latest firmware version, the message to confirm latest version appears.
- When connect the product to your PC, if there is latest firmware, the instruction message appears automatically.



Mplayer

Copyrights / Certification / Trademarks / Limited Liability

| Copyrights |

iriver Limited has all the rights of the patent, trademark, literary property and intellectual property related to this manual. You may not copy or reproduce any part of this manual unless authorized by iriver Limited. You can be punished by using any part of this manual illegally. The software, audio and video which have an intellectual property are protected by copyright and international laws. It is user's responsibilities when he/she reproduces or distributes the contents created by this product.

The companies, institutions, products, people and events used in examples are for demonstration purposes only. This manual does not imply, conclude, or describe associations between the manufacturer and any other companies, institutions, products, people, or events.

Users are responsible for observing the copyrights and intellectual properties.

© 1999~2007 iriver Limited. All rights reserved.

| Certification |

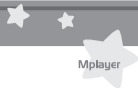
MIC
 Class B Digital Device (Residential Communication Device).
 This equipment has been tested and found to comply with the limits for a Class B digital device, pursuant to Part 15 of the FCC Rules. These limits are designed to provide reasonable protection against harmful interference in a residential installation.

| Trademarks |

Windows 2000, Windows XP and Windows Media Player are the registered trademarks of Microsoft Corp.

| Limited Liability |

Neither the manufacturer, importers nor dealers are responsible for any accidental damages including bodily injury or any damage resulting from misuse or unsuitable operation by you. The information on this manual is prepared with the current player specifications. The manufacturer, iriver Limited, is adding new features to the product and may persistently apply new technologies hereafter. All standards may be changed at any time without notice.



Safety Instructions

| Product Safety |

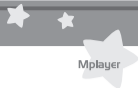
- Do not place objects inside the device other than CD's.
It may cause malfunction.
- Do not place heavy objects on the product.
It may cause damage and malfunction.
- Do not dampen your player with rain (water), beverage, chemicals, cosmetics and so on.
It may cause damage and malfunction.
- Keep away from harsh environments including humid, dusty, and smoky areas.
It may cause malfunction.
- Keep out of direct sunlight and extreme heat and cold.
It may cause malfunction.
- Do not keep the product close to magnetic substance such as magnet, TV, monitor and speaker.
It may cause malfunction.
- Never dismantle, repair, or rebuild your player without permission.
It may cause damage and malfunction.
- Do not clean with chemical or detergent.
It may cause malfunction.
- Do not drop or subject the device to impact.
It may cause damage and malfunction.
- Do not disconnect the USB cable while transferring data.
It may cause malfunction.



Safety Instructions

| Others |

- Do not use headphones / earphones while cycling, driving, or operating any motorized vehicle.
It is dangerous and is illegal in some areas.
- Reduce volume or stop using the player if you experience a ringing in your ears.
It may cause injury.
- Reduce volume while walking, especially at pedestrian crosswalks.
It may cause injury.
- Do not listen to music via headphone/earphone with high volume for a long time.
It may cause injury.
- Do not use headphone / earphones at high volume.
It may cause damage or your injury.
- Keep headphone-/earphone cords under control to avoid getting caught on nearby objects.
It may cause damage or your injury.
- Do not sleep with headphones / earphones in the ears.
Do not use headphones / earphones for excessive periods of time.
It may cause damage or your injury.
- Try to connect the product to the rear USB port in your PC.
In some individually assembled PCs, improper USB port may cause malfunction.



Troubleshooting

| Please check out! |

- **The player will not power on!**
 - Check whether the battery is discharged.
- **No sound during playback!**
 - Check whether the volume is set to "0".
 - Check whether the plug or connection jack of earphones is dirty.
 - Check whether the music file is corrupted.
- **File download is not available.**
 - Some older computer models may not support USB connection.
 - Check whether the USB cable is firmly connected.
- **The memory space is changed after formatting.**
 - The memory space can be changed depending on the operating system.