



BW2569-32P2 WIFI Module

Hardware specification

Projector Connectivity Module (PCM) Certification -Operational Description
Publication Number: Iton 0704; Ver. 1.0; July 4, 2016

Part Number: BW2569-32P2

Operational Description:

The PCM is a complete dual-band(2.4G and 5G) 2*2 WIFI module, specifically aimed at the IoT ,Lighting and projector market. Operating from a single 5V supply, the PCM allows simple integration into existing products. Fully qualified firmware and software are provided, enabling simple design-in.

Support for Apple Wireless Accessory Configuration and HomeKit is available with an optional MFI Authentication Coprocessor.

The module is available with temperature rating of 105°C, enabling a wide range of household appliances

Main Features:

- 一： 2X2 mimo 802.11b/g/n/ac dual-band and blue-tooth wpa2 authentication
- 二： dual-stream spatial multiplexing up to 867Mbps data rate
- 三： option for external antenna via U.FL • IPv4 and IPv6 support
- 四： OTA fimware upgrades
- 五： Receive sensitivity to -94dBm
- 六： 105°C temperature rating available • Single 5V Supply
- 七： Supported the operating system: Windows XP/Vista, Windows 7, Linux (TBD), Android。
- 八： Small 18×27mm 32-pad package and Standard PCBA process compatible.

Pin function lis :

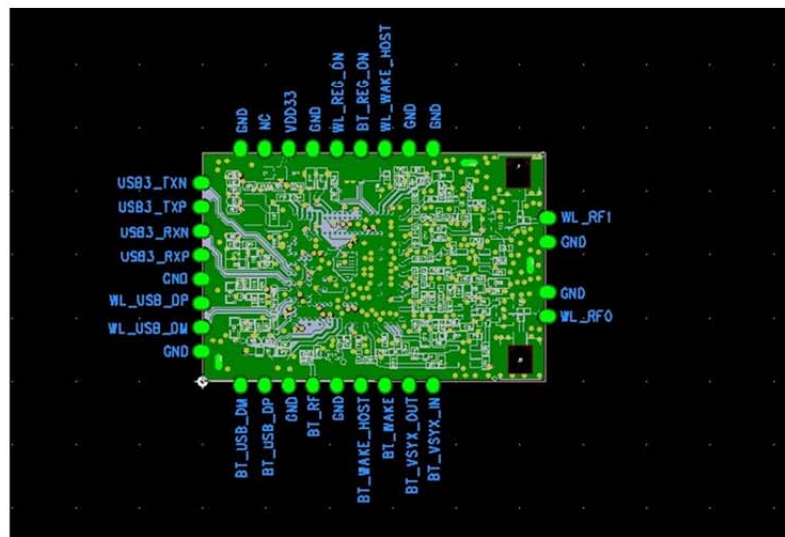
Pin	function
1	USB3_TXN
2	USB3_TXP
3	USB3_RXN
4	USB3_RXP
5	GND
6	WL_USB_DP



tianan digital city 4 1302 A ,huange north road ,longgan district, shenzhen

7	WL_USB_DM
8	GND
9	BT_USB_DM
10	BT_USB_DP
11	GND
12	BT_RF
13	GND
14	BT_WAKE_HOST
15	BT_WAKE
16	BT_VSYX_OUT
17	BT_VSYX_IN
18	NC
19	WL_RF0
20	GND
21	GND
22	WL_RF1
23	NC
24	GND
25	GND
26	WL_WAKE_HOST
27	BT_REG_ON
28	WL_REG_ON
29	GND
30	VDD33
31	NC
32	GND

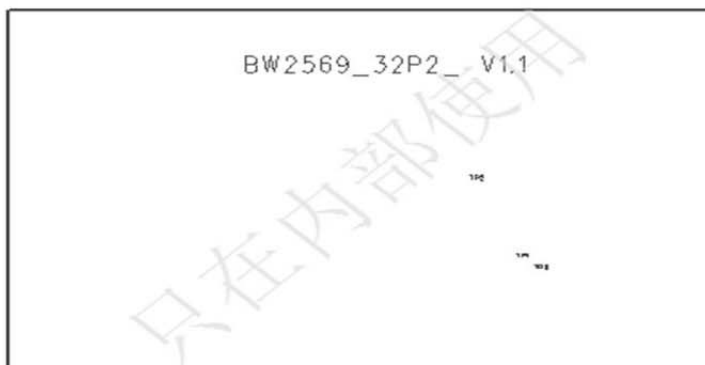
Solid graphics :





tianan digital city 4 1302 A ,huange north road ,longgan district, shenzhen

Silkscreen bottom picture:



VYVMW2569-32P User Manual

FCC ID of this product is as follows.

FCC ID: VYVMW2569-32P

For OEM integration only – device cannot be sold to general public. Therefore we will ask OEM to include the following statements required by FCC on the product and in the Installation manual Notice.

Notice

Please describe the following warning on the final product which contains this module.

Contains Transmitter Module FCC ID:VYVMW2569-32P or Contains FCC ID:VYVMW2569-32P

This device complies with part 15 of the FCC Rules. Operation is subject to the following two conditions: (1) This device may not cause harmful interference, and (2) this device must accept any interference received, including interference that may cause undesired operation.

changes or modifications not expressly approved by the party responsible for compliance could void the user's authority to operate the equipment.

NOTE: This equipment has been tested and found to comply with the limits for a Class B digital device, pursuant to Part 15 of the FCC Rules. These limits are designed to provide reasonable protection against harmful interference in a residential installation. This equipment generates, uses and can radiate radio frequency energy and, if not installed and used in accordance with the instructions, may cause harmful interference to radio communications. However, there is no guarantee that interference will not occur in a particular installation. If this equipment does cause harmful interference to radio or television reception, which can be determined by turning the equipment off and on, the user is encouraged to try to correct the interference by one or more of the following measures:

- Reorient or relocate the receiving antenna.
- Increase the separation between the equipment and receiver.
- Connect the equipment into an outlet on a circuit different from that to which the receiver is connected.
- Consult the dealer or an experienced radio/TV technician for help.



tianan digital city 4 1302 A ,huange north road ,longgan district, shenzhen

warning for OEM:

(a)The module should not collocate with other wireless radio

(b) Monolithic SMD antenna of antenna OEM should use. Antenna Gain is 2dBi. to connect with the antenna seat.

-WiFi 5.1-5.2G is only indoor use.

RF Exposure Statement

To maintain compliance with FCC' s RF Exposure guidelines, This equipment should be installed and operated with minimum distance between 20cm the radiator your body: Use only the supplied antenna.