

Wireless Bluetooth Keyboard User's Guide

Thanks for purchasing this 1000dpi Bluetooth Keyboard, it's with standard 104 keys as well as 18 function keys. This creative and easy-to-use Bluetooth Keyboard will bring you a whole new wireless life experience.

System Requirement

- Keyboard compatible with standard Microsoft Mode.
- IBM compatible PCs running Windows Operating System which supports USB devices.
- If your computer don't have built in Bluetooth function, please make sure that you have the Bluetooth Dongle. Bluetooth Dongle is not included in this product.

Before you Begin

- Keep this Installation Guide for future reference! It contains important Troubleshooting Information.
- Keep your old PS/2 keyboard as a back-up device.

Main Features

- Use Broadcom 2042 Chipset with wireless Bluetooth 2.0 interface
- Features comfortable, ergonomic design with 18 function keys
- Come with particular power managing software, indicates the power capacity in Microsoft Windows System automatically
- Use the Bluetooth industry leading software solutions, WIDCOMM BTW (Microsoft officially designated software) Bluetooth software
- Built-in software solutions with Bluetooth human interface device and comply with the standard version of the Bluetooth SIG Bluetooth 2.0
- Work with Windows 98, ME, 2000, Server 2003, XP and Vista
- Support SONY PS3;
- AA alkaline battery x2
- Frequency band: 2.4 - 2.4835GHz unlicensed ISM band
- Receiving sensitivity: -75dbm (standard)
- RF output power: up to 4dbm as maximum, good for your health with lowest radiates
- Operation distance: 10m
- Workable environment: 0-55°C
- Humidity: 20%-50%

Installation Guide

Step1. Inserting Batteries

1. Open the Battery Cabinet as below..
2. Inset two AA alkaline batteries. (Please refer to the diagram above for the polarity of batteries).
3. Close the Battery Cabinet, press the match button.on the bottom.



Step2. Connecting the Keyboard to the Dongle.

Before you install the Bluetooth Keyboard, please make sure that the Bluetooth Dongle has been installed. Software available like Widcomm(Recommended), IVT or the Microsoft built-in software(can not connect to the headset).

Press and release the match button at the bottom, the Blue LED light on the right side of the keyboard will change to a flashing model, and this is the match process.

Match Procedure

A: Match on Widcomm (recommended)



1. Double click the Icon again, “My Bluetooth Place” pops up; select “Bluetooth ---Add Bluetooth facility”. Click “Next” button In the Setup Guild window.



2. When the system finds the Keyboard, select it and click “Next”.

3. Input the stochastic Match Code, and confirm.



1. Now you can use your keyboard at ease.

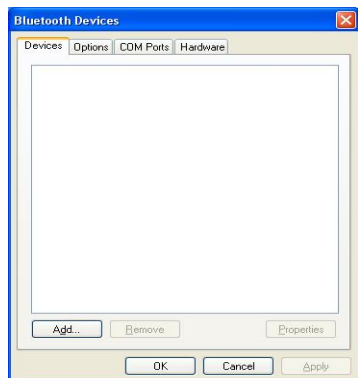
Tips:

If you are using the Widcomm Bluetooth Software, select the keyboard icon and click the right button of the keyboard and select “Status”, then you can check the power status of the batteries and setup alarm for shortage of battery.



B. Match on Microsoft built-in software

1. Make sure that the Bluetooth Function has been activated. Double click the Bluetooth Icon on the Task Bar or in the Control Panel, open the “Bluetooth Management” window, click “Add”, tick off “facility is ready for searching”, click “Next”.

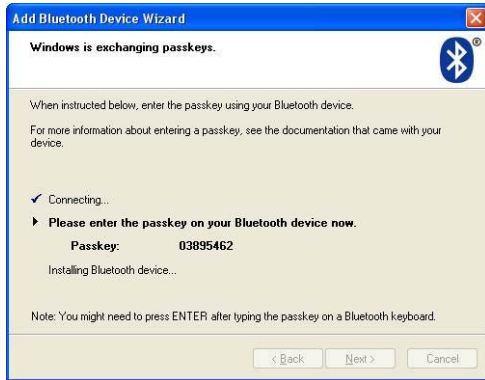


2. Wait till the keyboard is found, select keyboard and click “Next”.



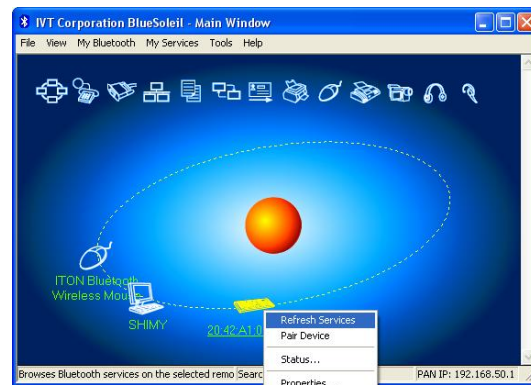
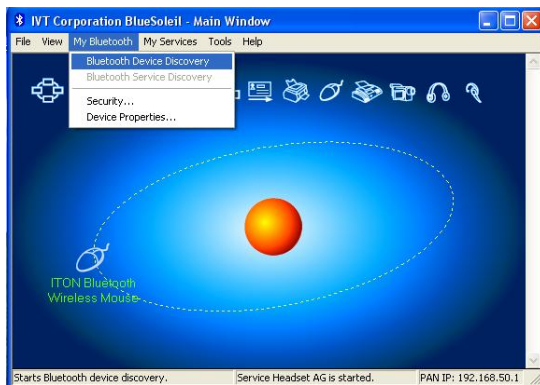
3. Select” Choose a pass key for me”, click “Next”.

4. Input the pass key and press “Enter”, click “Next”, the system will finish the installation of the new facility automatically.



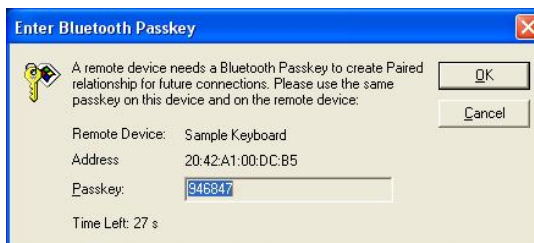
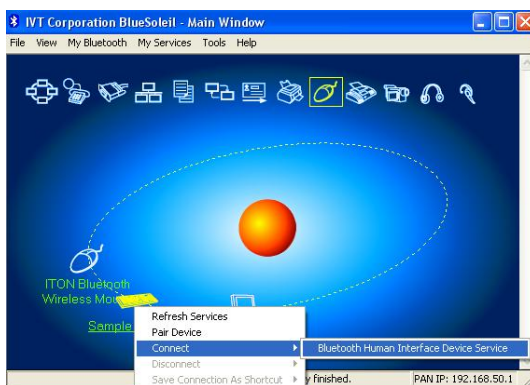
C. Match on IVT Software

1. Make sure that the Bluetooth function is active. Double click the Bluetooth Icon, open the Management window, select “Search for Bluetooth facilities” or click the Round Ball in the middle of the window.



2. Click the Bluetooth Keyboard founded, click the right button for “Refresh Service”.

3. Select the Bluetooth Keyboard again, click the right button for “Connect-Bluetooth Input Service”, input the stochastic pass key, the system will auto install the HID facility. After that you can use your Bluetooth Keyboard at ease.



FAQ:

If unable to connect the Bluetooth Keyboard to the computer, or the Keyboard work unconventionally, please try the steps below:

1. Before you install your Bluetooth Keyboard, please make sure you have done the Bluetooth

Dongle installation procedure, and the Bluetooth facility is turned on.

2. Press and release the connect button on the bottom of Bluetooth Keyboard. The blue led light will change into a flashing mode.
3. Make sure that the Computer is connected to the Bluetooth Keyboard. If they are matched to each other before, then under the Standby State, just double click the left button of the keyboard.
4. Make sure that the keyboard is within the effective range---10M.
5. Make sure that there's no change of the Bluetooth facility. If anything changed, please kindly rematch.
6. If your Bluetooth facility is connected to other Bluetooth products, please kindly confirm that the speed of the Bluetooth facility is enough.
7. Please kindly check the batteries. If they are short of power, replace them for new ones.

Keyboard Drawing

Size and weight

Length: 49cm

Width: 22.5cm

Height: 3.7cm

Weight: 740 ± 10 g

Materials of Keyboard

Top case: ABS

Bottom case: ABS

Electric Specifications

Operation Voltage: 3V DC (powered by batteries).

Operation Current: ≤ 30 mA, operate on a white paper.

Standby Current: 2mA

Transmit Range: up to 10 meters

Storage Temperature: $-40 \sim +125$ degree

Federal Communication Commission Interference Statement

This equipment has been tested and found to comply with the limits for a Class B digital device. Pursuant to Part 15 of the FCC Rules. These limits are designed to provide reasonable protection against harmful interference in a residential installation. This equipment generates uses and can radiate radio frequency energy and, if no installed and used in accordance with the instructions, may cause harmful interference to radio or television reception, which can be determined by turning the equipment off and on, the user is encouraged to try to correct the interference by one of the following measures:

- Reorient or relocate the receiving antenna
- Increase the separation between the equipment and receiver.
- Connect the equipment into an outlet on a circuit different from that to which the receiver is connected

- Consult the dealer or an experienced radio/TV technician for help.

This device complies with Part 15 of the FCC Rules. Operation is subject to the following two conditions (1) This device may not cause harmful interference, and (2) this device must accept any interference received, including interference that may cause undesired operation.

FCC Caution: Any change or modifications not expressly approved by the party responsible for compliance could void the user's authority to operate this equipment.

IMPORTANT NOTE:

FCC Radiation Exposure Statement:

1. This equipment complies with FCC radiation exposure limits set forth for an uncontrolled environment. End users must follow the specific operating instructions for satisfying RF exposure compliance.
2. This transmitter must not be co-located or operating in conjunction with any other antenna or transmitter.

When abandoning the battery, please take care of it according to your local regulations. It cannot be treated as Normal Trash.