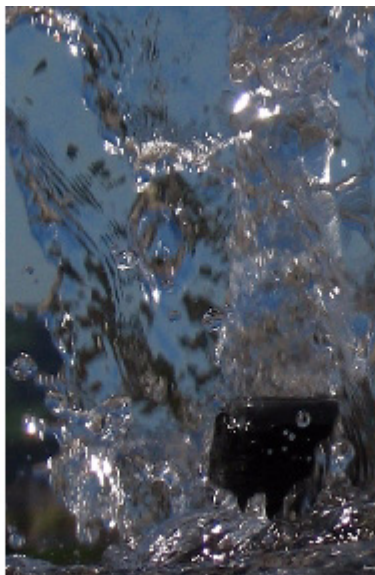
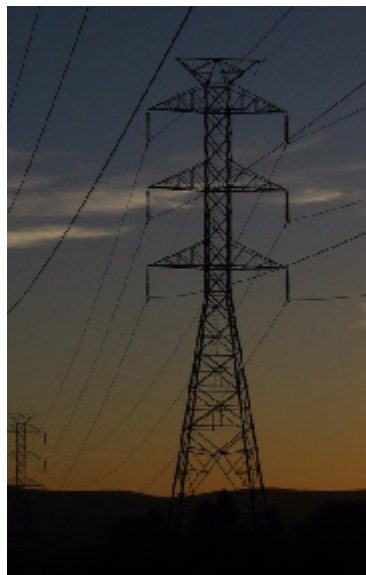




Relay SG Product Guide

Version 5.0

September 2007



Silver Spring Networks
575 Broadway Street
Redwood City, CA 94063

www.silverspringnet.com

650.298.4200 Phone
650.363.5240 Fax

Relay SG Product Guide, Version 5.0

September 2007

Copyright © 2004-2007, Silver Spring Networks®, Inc. All rights reserved.

Silver Spring Networks®, UtilityIQ®, UtilOS®, and PowerPoint® Network Interface Module are registered trademarks, and Metro Gateway™, Metro Relay™, Gas Interface Management Unit™, and Water Interface Management Unit™ are trademarks of Silver Spring Networks, Inc.

kv2c and I-210 are trademarks of General Electric Company. Itron, MV-90, and Centron are registered trademarks of Itron, Inc. iCon is a trademark of Sensus Metering Systems. Rockwell is a registered trademark of Rockwell Automation, Inc. American is a registered trademark of American Metering Company, Inc. Red Hat is a registered trademark of Red Hat, Inc. Perl is a trademark of the Perl Foundation. Oracle is a registered trademark of Oracle Corporation. Apache is a trademark of The Apache Software Foundation. JBoss is a registered trademark and servicemark of JBoss, Inc. Firefox is a registered trademark of the Mozilla Foundation. Microsoft is a registered trademark, and Windows, Windows Vista, and Internet Explorer are trademarks of Microsoft Corporation. Google Maps is a trademark of Google Inc. Thomas Bros. Maps is a registered trademark of Rand McNally & Company. InstallShield is a registered trademark of InstallShield Software Corporation. Adobe Acrobat and Adobe Framemaker are registered trademarks of Adobe Systems Incorporated. WebWorks Publisher is a trademark or registered trademark of Quadralay Corp.

All other company and product names are used for identification purposes only and may be trademarks, service marks, or registered trademarks of their respective owners.

Part Number: 210-038005

Document Number: RLYSGv5.0PG

August 27, 2007 12:12pm

Relay SG

This document contains an introduction to the Silver Spring Networks Metro Relay, its FCC and government guidelines, and safety information related to its installation.

- [Introduction](#) on page 2
- [FCC and Government Guidelines](#) on page 2
- [Safety Information](#) on page 4

Introduction

The Relay SG relays messages through the Silver Spring Networks' 900 MHz wireless LAN communications protocol. The relay is a signal repeater between a Access Point SG and various Silver Spring Networks-equipped endpoint devices.

The Relay is enclosed in a weatherproof enclosure and is typically mounted on poletops.

[Figure 1](#) is a photograph of the Relay SG.

Figure 1. Relay SG



FCC and Government Guidelines

This equipment has been tested and found to comply with the limits for a Class B digital device, pursuant to Part 15 of the FCC Rules. These limits are designed to provide reasonable protection against harmful interference in a residential installation. This equipment generates, uses and can radiate radio frequency energy and, if not installed and used in accordance with the instructions, may cause harmful interference to radio communications. However, there is no guarantee that interference will not occur in a particular installation. If this equipment does cause harmful interference to radio or television reception, which can be determined by turning the equipment off and on, the user is encouraged to try to correct the interference by one or more of the following measures:

- Reorient or relocate the receiving antenna.
- Increase the separation between the equipment and receiver.
- Connect the equipment into an outlet on a circuit different from that to which the receiver is connected.
- Consult the dealer or an experienced radio/TV technician for help.

This device complies with Part 15 of the FCC Rules. Operation is subject to the following two conditions:

1. This device may not cause harmful interference, and
2. This device must accept any interference received, including interference that may cause undesired operation.

Any changes or modifications to this device not expressly approved by the party responsible for compliance could void the user's authority to operate the equipment.

In order to maintain compliance with FCC RF exposure requirements, this device must be installed in such a manner as to maintain a 20 cm separation distance between the antenna and all persons.

FCC regulations require that this unit be professionally installed and maintained by a trained meter technician. Use of an antenna other than that outlined in the FCC certification filing may violate FCC regulations.

Labelling

Figure 2 is a copy of the FCC ID label that can be found affixed to the Relay SG. The size of the label is 1.75 x 3.50 inches.

Figure 2. FCC, IC Label



The label includes the data listed in [Table 1](#):

Table 1. Relay SG Label Data

| Label Element | Label Text |
|--------------------|--------------------------|
| Title | RELAY, SG, NIC V5.0, BPF |
| Catalog Number | 210-040101 |
| FCC ID | OWS-NIC502 |
| Industry Canada ID | 5975A-NIC502 |
| Label Part Number | 996-0000018C |

Safety Information

***WARNING!** Severe shock and explosion hazard! Touching energized parts can result in massive equipment damage, and severe injury or death. Short-circuiting energized parts will result in blinding flash and explosion. Opening and closing electrical circuits can also produce dangerous and explosive arc flashes. Involuntary muscular reactions associated with electrical shock may result in other injuries. Observe the following safety guidelines.*

Careful planning of every job is essential. Nothing should be taken for granted. Do not take chances!

- Read and follow all approved policies and procedures provided by your employer associated with the procedures in this manual.
- The procedures in this manual must only be performed by qualified workers in accordance with local utility safety practices, utility requirements, and applicable OSHA and NFPA standards.
- The information contained in this document is intended to aid qualified personnel, and is not a replacement for the proper training required to make a person qualified.
- Silver Spring Networks assumes no liability for the customer's failure to follow these safety guidelines.

General Electrical Safety

- Perform the procedures in this manual in accordance with applicable workplace standards established by the following agencies:
 - Occupational Safety and Health Act (OSHA).
 - The National Electrical Code published by the National Fire Protection Association (NFPA-70).

- ♦ National Electrical Manufacturers Association (NEMA).
- ♦ Electronics Industries Association (EIA).
- ♦ Insulated Power Cable Engineers Association (IPCEA).
- American National Standards Institute (ANSI). Whenever possible, de-energize all circuits or equipment before working on them.
- Maintain a minimum clearance of 10 ft. between line potential and all unqualified persons at all times.
- Keep unauthorized people out of the work area. Be especially cautious of children, who tend to be drawn to work activity.
- Determining if a circuit is OFF can be difficult in some instances. Check for circuit voltage with an appropriate voltmeter before working on equipment presumed to have been de-energized. Tiebreakers, double throw disconnect switches, automatic transfer switches and emergency generators can supply power through an alternate circuit or from another source.
- 120V current can be just as lethal as higher voltages because current flow through a body depends upon the body's resistance.
- Do not trust insulation and/or weatherproofing on a wire as protection from shock.
- Use electrically insulated tools. Inspect portable electrical equipment or tools for defects and remove any defective devices from service immediately. All portable electrical equipment must have Ground Fault Circuit Interrupter (GFCI) protection.
- Select the right tool for the job. Use tools properly. Keep tools in good working order.
- Make sure the work area is free of any flammable material. Flammable vapors can be ignited by an arc flash.
- Keep the work area clean and dry. Cluttered work areas cause accidents and injuries.
- Provide good lighting in the work area. You cannot work safely if you cannot see what you are doing.
- Report unsafe conditions or defective equipment to your immediate supervisor.
- Handle material carefully. Lift and carry properly.

Personal Protective Equipment (PPE)

- Always wear Personal Protective Equipment (PPE), in accordance with OSHA and ANSI standards.
- Wear eye protection and electrically insulated gloves. Test gloves in accordance with ANSI standards before use. Do not use gloves that do not pass appropriate test procedures.
- Wear protective clothing such as long sleeve shirts and long pants made of flame resistant materials.
- Remove all jewelry.
- Do not pass any objects to or from other persons not protected by insulating platforms or tested, electrically insulated gloves.

Fall Protection

When performing work at any elevation:

- Always use a fall protection system, in accordance with OSHA standards, whenever performing work at any elevation.
- Never use conductors, guy wires, pins, or cross-arm braces, etc. to support your weight.
- Whenever using aerial lift devices such as hoists, man-lifts, vehicle-mounted work platforms and overhead lifts, read and follow the manufacturer's guidelines for safe and proper operation.
- Use ladders and scaffolding only in accordance with the manufacturer's guidelines and/or according to OSHA standards.
- Only use ladders made of non-metallic, non-conductive material. They should be the proper size and type for the work intended. Inspect ladders for wear and breakage. Remove any oil, grease, or other slippery materials.
- Do not set the ladder at too steep or too shallow of an angle. A rule of thumb is to stand erect with your toes against the bottom rails of the ladder, with your arms extended straight out. If you can set your palms on top of the rung that is at eye level, the ladder should be at the proper angle. If a ladder angle label is provided, follow its recommendations.
- If the ladder is to remain in place for an extended period, secure it at the top. The support point at the top of the ladder should be at least 24 inches (60 centimeters) wide to maintain

support in the event of sideways movement. For jobs of short duration, have a fellow worker support the ladder at the base.

- Evaluate all tasks to be performed from a ladder for potential fall hazards, such as complex tasks or situations that require leaning from the side of the ladder.

The use of scaffolding or a work platform should be considered as an alternative solution in such cases.

Shock Accident First Aid

- Do not touch the victim with your bare hands; use something non-conductive to separate the victim from the energy source.
- Call for emergency medical help immediately. Keep the victim lying down, warm, and comfortable until help arrives. Avoid moving the victim in case of injury to neck or back. Position an unconscious victim on a side to let fluids drain.
- Check the victim's breathing and heartbeat. If properly trained, apply mouth-to-mouth resuscitation and/or CPR if necessary.
- Remove constricting items from the victim, such as shoes, belts, jewelry, and tight collars; they could cut off circulation if the victim experiences swelling.
- Apply water or saline for a few minutes to any burns until the skin returns to normal temperature. Do not attempt to remove clothing that is stuck to a burn. If possible, elevate burned areas to reduce swelling.
- Make sure the victim receives professional medical attention, even if they feel fine. Electric shock can cause heart failure hours after the shock is received.