

IX-5800 Digital Key Telephone

The IX-5800 is equipped with a two-line, 16-character LCD display, and nine multipurpose keys. The IX-5800 has a large incoming call / MSG indication LED on the top of the telephone.

Ringer, Handset, and Speaker volume for the IX-5800 is controlled by using the - and + keys and changes based on the state of the telephone. The IX-5800 includes a three-position integrated pedestal and a wall-mount option that simplifies installation. An IX-58EXTENDER Loop Limit Extender and an IX-ELK9 Line Key Expansion are optional units available for the IX-5800.

Technical Specifications

Model:	IX-5800	Part Numbers:	505800
Pedestal:	3-position Integrated Pedestal with two wall-mount options	Multipurpose Keys:	9 Multipurpose keys or 18 with the IX-ELK9
Connection:	Digital star-wired key telephone using one or two pair telephone wire.	Connectors:	Handset cord connector; Headset cord connector; Line connector [IX-16PSUB-2]
Volume Level Adjustment:	Ringer: 1-4 Receiver: 1-3 Speaker: 1-11	Size:	7.5"W x 3.5"H x 11.3"D
Display Viewability:	2 Lines x 16 Characters	Weight:	2.65 lbs
Software Version:	ECS version 5.0 or higher	Operating Conditions:	32° to 104°F (0 to 40°C) 10 to 90% Humidity (non-condensing)
		Storage Temperature:	14° to 122°F (-10 to 50°C)

IX-5800



IX-5810 Digital Key Telephone

The IX-5810 is equipped with a seven-line, 24-character LCD display, 16 multipurpose keys, and 10 Self-Labeling menu keys. Many features that often required a specialized key on the telephone or a series of feature access codes are accessed using the Self-Labeling menu keys. The Self-Labeling menu display offers easy-to-read, clear text that assists you through the process of using system features.

The IX-5810 is equipped with a seven-line, 24-character backlit LCD display, and 10 menu keys. The IX-5810 has a large incoming call / MSG indication LED on the top of the telephone. The Setup menu allows the user to configure a Bluetooth headset, change the display contrast, and choose up to five different Ticker displays.

The IX-5810 includes a three position integrated pedestal and a wall-mount option that simplifies installation. A Bluetooth adapter (IX-58BTINF), Loop Limit Extender (IX-58EXTENDER), and a Line Key Expansion (IX-ELK8) are optional units available for the IX-5810.

Technical Specifications

Model:	IX-5810	Part Numbers:	505810
Pedestal:	3-position Integrated Pedestal and two wall-mount options	Self-Labeling Menu Keys:	10 keys that support 20 feature keys
Connection:	Digital star-wired key telephone using one or two pair telephone wire.	Multipurpose Keys:	16 Multipurpose keys or 24 with the IX-ELK8
Connectors:	Handset cord connector; Headset cord connector; Line connector [IX-16PSUB-2]		
Volume Level Adjustment:	Ringer: 1-4 Receiver: 1-3 Speaker: 1-11	Size:	7.5"W x 3.5"H x 11.3"D
Display:	Built-in Backlit LCD 7 Lines x 24 Characters	Weight:	2.65 lbs
Viewability:		Operating Conditions:	32° to 104°F (0 to 40°C) 10 to 90% Humidity (non-condensing)
Software Version:	ECS version 5.0 or higher	Storage Temperature:	14° to 122°F (-10 to 50°C)

IX-5810



IX-58BTINF Bluetooth Interface

The IX-58BTINF Bluetooth Interface module is available for the IX-5810 Digital Telephone. This is a Class 2 version 2.0 + EDR Bluetooth module. This optional module attaches to the IX-5810 circuit board and can be installed by the Iwatsu Authorized installer.

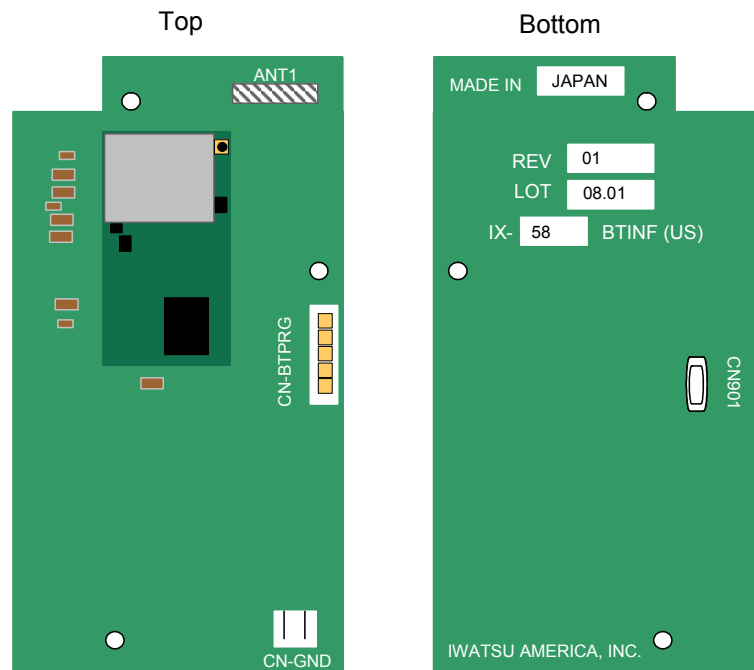
Caution!

Changes or modifications not expressly approved by Iwatsu Voice Networks could void the user's authority to operate this equipment.

Technical Specifications

Model:	IX-58BTINF	Part Number:	505058
KT Compatability:	IX-5810 Digital KT	Connectors:	CN901 - to the KT CN-BT CN-GND - to the CN-BTGND
Bluetooth Class:	Class 2	Line	300 m or less.
Bluetooth Version:	V2.0 + EDR	Condition:	40 Ohm DC resistance or less (power supplied by KSU)
Memory:	Flash ROM = 256KB SRAM = 64KB	Size:	2.2"W x 3.4"D x .16"H
Operation Clock:	30MHz	Weight:	3.53 oz.
Voice Packets:	HV1, HV2, HV3, EV3, EV4, EV5, 2-EV3, 3- EV3, 2-EV5, 3-EV5	Operating Temperature:	32° to 104°F (0 to 40°C) 10 to 90% Humidity (non-condensing)
Power:	+3.3 V from KT Idle = .07 W Max = .36 W	Storage Temperature:	14° to 122°F (-10 to 50°C)
Line Coding:	Mu-Law		

IX-BTINF (Top and Bottom)



IX-58EXTENDER

The IX-58EXTENDER provides the interface for the IX-5800 and IX-5810 Digital Telephones to increase the loop limit distance for the telephone up to a maximum of 2,100 feet.

Technical Specifications

Model:	IX-58EXTENDER	Part Number:	505098
Key Telephone	IX-5800 / IX-5810	Connectors:	
Compatability:		Internal -	2-pin harness connector (CN-DC1)
		External -	EIAJ Class 5 Jack (CN-ADP1)
		Size:	1.1"W x 1.67"D x .67"H
		Weight:	1.76 oz.
Power Supply:	IX-59AC	Operating	32° to 104°F (0 to 40°C)
Input:	100-240V , 1.0A 50/60 Hz	Temperature:	10 to 90% Humidity (non-condensing)
Output:	16.5 V 0.37A		
Line Condition:	AWG 22, 24 Twisted- pair cable 2,100 feet or less	Storage	14° to 122°F (-10 to 50°C)
		Temperature:	

