

IX-59BTINF Bluetooth Interface

The IX-59BTINF Bluetooth Interface module is an optional module available for the IX-5930 and IX-5910 IP Telephones. This is a Class 2 version 2.0 + EDR Bluetooth module. This optional module attaches to the IX-5930 or IX-5910 circuit board and can be installed by the Iwatsu Authorized installer.

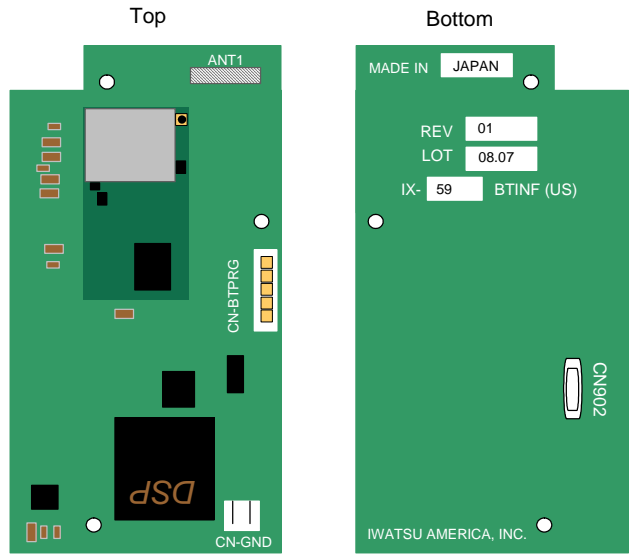
- **Headset Control Key:** For convenience and visibility, Iwatsu recommends placing a Headset Control Key in the key pattern of all telephones with a Bluetooth Interface Module.

Caution! Changes or modifications not expressly approved by Iwatsu Voice Networks could void the user's authority to operate this equipment.

IX-59BTINF Technical Specifications

Model:	IX-59BTINF	Part Number:	505059
KT Compatibility:	IX-5910 IP KT IX-5930 IP KT	Connectors:	CN902 - to the KT CN-BT CN-GND - to the CN-BTGND
Bluetooth Class: Bluetooth Version:	Class 2 V2.0 + EDR	Line Condition:	300 m or less. 40 Ohm DC resistance or less (power supplied by KSU)
Memory: Operation Clock:	Flash ROM = 256KB SRAM = 64KB 30MHz	Size: Weight:	2.2"W x 3.4"D x .16"H 3.53 oz.
Voice Packets:	HV1, HV2, HV3, EV3, EV4, EV5, 2-EV3, 3-EV3, 2-EV5, 3-EV5	Operating Temperature:	32° to 104°F (0 to 40°C) 10 to 90% Humidity (non-condensing)
Power:	+3.3 V from KT Idle = .07 W Max = .36 W	Storage Temperature:	14° to 122°F (-10 to 50°C)
Line Coding:	Mu-Law		

IX-59BTINF (Top and Bottom)



Bluetooth Headset Compatibility Chart

Iwatsu Voice Networks has tested the following Bluetooth Headsets for use with the IX-59BTINF or IX-58BTINF. This chart also includes ECS Class 41 database programming changes to optimize Bluetooth headset performance based on make and model of the headset.

Disclaimer:

Iwatsu has used its best effort testing the performance of the Bluetooth headsets listed in the compatibility chart below. Please note, however, that changes, modifications, and availability of third party equipment is beyond the control of Iwatsu and therefore compatibility and performance for said handsets is subject to change without notice. **THE COMPATIBILITY AND PERFORMANCE OF ANY BLUETOOTH HEADSET NOT MANUFACTURED BY IWATSU IS "AS IS" AND IS NOT SUPPORTED, WARRANTED OR GUARANTEED BY IWATSU IN ANY MANNER, AND IWATSU HEREBY DISCLAIMS ANY AND ALL IMPLIED WARRANTIES OF MERCHANTABILITY AND FITNESS FOR A PARTICULAR PURPOSE.**

The Bluetooth headsets listed below achieved the best results during Iwatsu's testing that measured performance based on the following environmental considerations:

1. Number of Bluetooth devices within a 10 meter radius of the Bluetooth enabled Iwatsu Icon Series IX-5930, IX-5910, or IX-5810 KT.
2. WiFi devices within a 10 meter radius of the Bluetooth enabled Iwatsu Icon Series IX-5930, IX-5910, or IX-5810 KT.
3. Distance from the Bluetooth enabled Iwatsu Icon Series IX-5930, IX-5910, or IX-5810 KT.

Bluetooth Headset Make:	Bluetooth Headset Model:	Database Programming Transmit Offset	Database Programming Receive Offset
Motorola	H550	8 dB	2 dB
BlueAnt	V12	-2 dB	-1 dB
Jabra	BT5020	4 dB	-6 dB

Note:

When the Motorola H550 headset is taken out of range and then returned within range of the paired key telephone, the H550 headset LED will flash red and you will hear a beep approximately every 30 seconds. To clear this state, power the headset off and then on and wait for the headset to reconnect.