

Operating manual:

☉**Turn on the Car Kit**

Turn up the Power On/Off to switch on and an orange LED follows. An indication of music and LED off once the process of switch on is completed.

For the first time pairing to blue tooth mobile, it automatically goes to pairing mode.

For non-first time pairing, it automatically goes to standby mode.

☉**Pairing Mode**

The twinkle of green & red LED indicates the Car Kit is in pairing mode, the pairing PIN is 0000. Once the Car Kit completes the pairing process, it stays in standby mode.

Note: Under the pairing mode, you may select the music by pressing the Talk button.

☉**Standby Mode.**

The Car Kit goes to standby mode under circumstances as below:

1. The Car Kit has successfully paired to your cell phone.
2. After disconnect calls. You are able to answer incoming calls under the standby mode.

☉**Auto-answer incoming calls**

Under the standby mode, the Green LED shows auto-answer incoming calls function is on. The Red LED shows auto-answer incoming calls function is off.

To set up the auto-answer function by press both Volume Up and Volume Down under the standby mode.

◎ **Answer incoming calls**

While an incoming call comes, the Car Kit displays by the music you previous set up, the incoming call will be answered after two rings under the auto-answer function is on.

Press Talk button to answer the call OR Pair button to reject the call.

Note: fast flash in Green to show the auto-answer is on OR in Red shows off.

◎ **Terminate calls**

Press Talk button to terminate the call, Car Kit LED in Green shows auto-answer function is on OR in Red shows off.

◎ **Transfer calls.**

An incoming call is transferable between cell phone and Car Kit.

Transfer from Cell phone to Car Kit by pressing Talk button.

Transfer from Car Kit to Cell phone, please refer you cell phone manual.

◎ **Adjust the volume**

Press the Volume Up button to increase the volume and Volume Down button to reduce the volume. The volume is adjustable during the communication process.

◎ **Re-enter to the pairing mode**

Press the Pair button to cancel the pairing record under standby mode and the Car Kit LED will be in orange. LED will be off after cancelled and to restart and pairing mode.

◎ **Turn off the Car Kit**

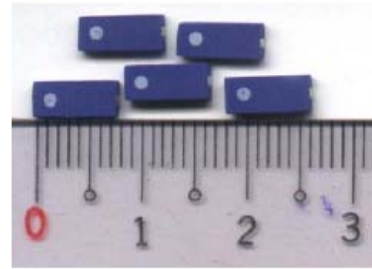
Turn down the switch to turn off the power and follows the LED will be off.

**MULTILAYER CERAMIC ANTENNA
FOR BLUETOOTH & WLAN IEEE 802.11b (2.45G Hz ISM Band)
(Long Shape)**

Product Specification¹

QUICK REFERENCE DATA

Dimension	7.8* 3.6 * 0.9 mm
Central Frequency*	2.45 GHz
Bandwidth	>100 MHz
Gain	2.5 dBi max
VSWR	2.0 max
Polarization	Linear
Azimuth	Omni-directional
Impedance	50Ω
Operating Temperature	-55~125 °C
Termination	Ni/Sn (Environmentally-Friendly Leadless)
Resistance to soldering heats	260°C, 10 sec.
Maximum Power	1W



* Three types of antenna are available for central frequency adjustment (type 245, type 260, type 270)



Special Environmental Concerns- Green Products Design: The foil making process is using environmentally-friendly aqueous solvent technology. Termination is lead free (Pb free) and packing materials can be re-cycled

Federal Communication Commission Interference Statement

This equipment has been tested and found to comply with the limits for a Class B digital device, pursuant to Part 15 of the FCC Rules. These limits are designed to provide reasonable protection against harmful interference in a residential installation. This equipment generates, uses and can radiate radio frequency energy and, if not installed and used in accordance with the instructions, may cause harmful interference to radio communications. However, there is no guarantee that interference will not occur in a particular installation. If this equipment does cause harmful interference to radio or television reception, which can be determined by turning the equipment off and on, the user is encouraged to try to correct the interference by one of the following measures:

- Reorient or relocate the receiving antenna.
- Increase the separation between the equipment and receiver.
- Connect the equipment into an outlet on a circuit different from that to which the receiver is connected.
- Consult the dealer or an experienced radio/TV technician for help.

FCC Caution: To assure continued compliance, (example – use only shielded interface cables when connecting to computer or peripheral devices). Any changes or modifications not expressly approved by the party responsible for compliance could void the user's authority to operate this equipment.

This transmitter must not be co-located or operating in conjunction with any other antenna or transmitter.

FCC Radiation Exposure Statement

This equipment complies with FCC radiation exposure limits set forth for an uncontrolled environment. This equipment should be installed and operated with minimum distance 20 cm between the radiator & your body.

This device complies with Part 15 of the FCC Rules. Operation is subject to the following two conditions: (1) This device may not cause harmful interference, and (2) this device must accept any interference received, including interference that may cause undesired operation.