



Bluetooth™ USB Adapter

Connect your peripherals and computing devices, without cables



User Manual
F8T003

TABLE OF CONTENTS

Introduction	2
Product Features	3
System Requirements	4
Package Contents	5
USB Adapter Specifications	6
Supported Profiles	7
Software Setup	9
Installing the USB Adapter	13
Installing the USB Device Driver	15
<i>Bluetooth</i> Configuration Settings	18
“My Bluetooth Places” Program	21
Uninstalling the Software	25
Glossary	27
FCC/CE/IC Statements	28
Information	31

INTRODUCTION

Thank you for purchasing the *Bluetooth* USB Adapter (the USB Adapter) from Belkin featuring *Bluetooth* wireless technology. The USB Adapter lets you create cable-free connections between your USB desktop PC and devices using *Bluetooth* wireless technology. The USB Adapter is compatible with all *Bluetooth* v1.1-certified devices and enables you to wirelessly connect up to seven other devices enabled with *Bluetooth* technology, such as printers, PDAs, and cell phones simultaneously. Now you can connect your peripherals and computing devices up to 10 meters away without cables in your home, office, or while on the road. Establish ad-hoc connection between devices without having to configure a network.

Before you install and start using your new USB Adapter, please take a few minutes to review some of the terms that you will be seeing throughout the document. You will find a brief Glossary on page 27 of this manual.

PRODUCT FEATURES

The USB Adapter is compliant with *Bluetooth* standard version 1.1 and provides:

- Compliancy with *Bluetooth* specification v1.1 devices
- USB bus powering: No external power supply necessary
- Support for Microsoft® Windows® 98 SE, Me, 2000, and XP
- Compatible with Mac® OS X v10.2 and higher*
- Operating distance of up to 10 meters
- Point-to-multipoint connections
- Support for data rates up to 721Kbps
- Built-in security: up to 128-bit encryption and authentication
- Compatibility with USB desktop and notebook computers

*Mac OS X driver and software provided by Apple®.

SYSTEM REQUIREMENTS

PC System Requirements

- PC-compatible computer, CPU speed of 200MHz or above
- Memory: 64MB or above, 128MB recommended
- One available USB port USB 1.1 standard
- Windows 98 SE, Me, 2000, and XP

Mac® System Requirements

- One available USB port, USB 1.1 standard
- Mac OS X v10.2 and higher*

*Mac OS X driver and software provided by Apple.

PACKAGE CONTENTS

- *Bluetooth* USB Adapter
- CD-ROM for installation software and documentation
- User Manual
- Quick Installation Guide
- Registration Card

USB ADAPTER SPECIFICATIONS

Bluetooth Compliance:	Version 1.1
Physical Interface:	USBHCI/OHCI 1.1-compliant
Operating Frequency:	2.4 to 2.4835GHz
Output Power:	0 dBm, Class 2
Sensitivity:	<0.1% BER@ -70 dBm
Data Rate:	723/57.6Kbps
Operating Range:	10-meter radius indoors
Network Topology:	Point-to-Multipoint
Packet Support:	1/3/5 Slots Packet
Operation:	Master/Slave
Frequency Stability:	+/- 10PPM
LED Indicator:	Power On/Data Traffic
Antenna Type:	Internal
Dimensions:	57mm (L) x 24mm (W) x 10mm (H)

Weight:	0.3oz. or 9g
Operating Temp:	0 to 70 degrees Celsius
Storage Temp:	-30 to 85 degrees Celsius
Humidity:	10-90% (non-condensing)
Supply Voltage:	5.0VDC (USB)
Nominal Current:	100mA
Support Profiles:	Service Discovery, File Transfer, LAN Access, Serial Port, DUN, Generic Object Exchange, Business Card, Push, Pull & Exchange, FAX, Synchronization
OS Support:	Windows 98 SE, Me, 2000, and XP Mac OS X v10.2 and higher*

*Specifications are subject to change without notice.
Mac OS X driver and software provided by Apple.

SUPPORTED PROFILES

The services supported by your USB Adapter are defined as “Profiles”. Available profiles include:

- Generic Access
- Service Discovery
- Serial Port
- LAN Access
- Dial-Up Networking
- Generic Object Exchange
- Object Push
- File Transfer
- Synchronization
- FAX

SUPPORTED PROFILES

Your USB Adapter gives you the ability to do the following—without cables:

- Transfer files
- Access dial-up networks
- Connect to local area networks
- Perform an ActiveSync® session
- Connect to serial ports
- Exchange PIM data
- Send or exchange business cards

The basic functions of the *Bluetooth* Neighborhood include:

- Device Discovery
- Service Discovery
- Establishing links with remote devices

SOFTWARE SETUP

Software Setup for Windows 98 SE, Me, 2000, and XP

To install the software for the USB Adapter, follow the instructions below:

Note: The installation process for Windows XP may look slightly different from Windows 98 SE, Me, and 2000.

Note: Do not insert the USB Adapter into the USB port prior to software installation.

1. Insert the software installation CD-ROM into the PC's CD-ROM drive.
2. The "Software InstallShield Wizard" window appears. Click on "Next" to begin the installation process.



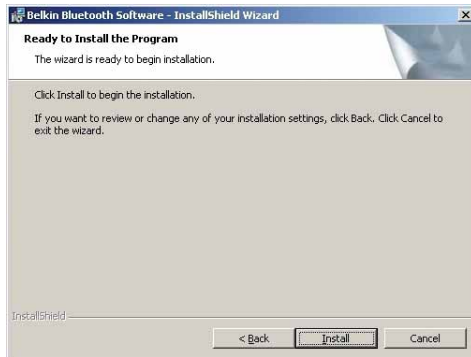
SOFTWARE SETUP

- Choose "I accept the terms in the license agreement" to accept the license agreement. Click on "Next".
- Name your device and select the type of computer you are installing your USB Adapter in. Click on "Next".



SOFTWARE SETUP

- Specify the location where the software and driver will be installed on your hard drive. It is recommended that you install the software and driver to the default directory "C:\Program Files\belkin\Bluetooth Software". Click on "Next".
- Confirm that the device software and driver are ready to be installed and click on "Install".



SOFTWARE SETUP

Note: If at any time during the installation process you receive a "Driver Signature Notice", click "Yes" or "OK" to continue the installation process.

7. Confirm the completion of installation; click "Finish" and then restart the system.



INSTALLING THE USB ADAPTER

Note: Your USB Adapter is sensitive to static electricity, which can damage its delicate electrical components. To protect your device, always touch the metal chassis of your computer before handling the USB Adapter. This will ground any potential electrostatic discharge. Avoid touching the metal connector when handling the USB Adapter. Dry weather conditions or walking across carpeted floors may cause you to acquire an electrostatic charge.

Connect the USB Adapter directly to an available USB A-type connector on your desktop or notebook computer.

INSTALLING THE USB ADAPTER

Note: Your USB Adapter is equipped with a powerful antenna, which provides optimal performance of the radio. In some instances, attaching the USB Adapter directly to the rear of a desktop PC is not the optimal place for the antenna to propagate its radio signal. For these instances, we recommend you a USB extension cable (Belkin part number F8T050) to extend the USB Adapter to a more optimal place for the radio signals to propagate.

INSTALLING THE USB DEVICE DRIVER

1. After installing the software and restarting the system, insert the USB Adapter into an available USB port. You should see your system register a new, USB device found. Click on "Next".

Note: In some computers, the USB hardware installation will be automatic and Installation Steps 1–5 will not be necessary.

2. Choose "Search for a suitable driver for my device". Click on "Next".

Note: If you receive a Microsoft Digital Signature Notice, click "Continue" to complete the installation process.



INSTALLING THE USB DEVICE DRIVER

3. Select “Specify a Location” and click on “Next”. Browse for the location of the device driver “C:\Program Files\Belkin\Bluetooth Software\bin\”; then click “OK”.
4. Confirm that the device driver was found and click on “Next”.



INSTALLING THE USB DEVICE DRIVER

5. A window will appear that confirms the completion of the driver installation; click on "Finish".



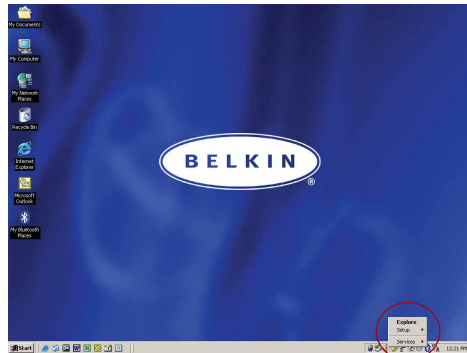
6. "My Bluetooth Places" should appear on your desktop. Your installation process is now complete.

BLUETOOTH CONFIGURATION SETTINGS

A variety of *Bluetooth* services and explanations of each service can be found in the “Help” file of the “My Bluetooth Places” program.

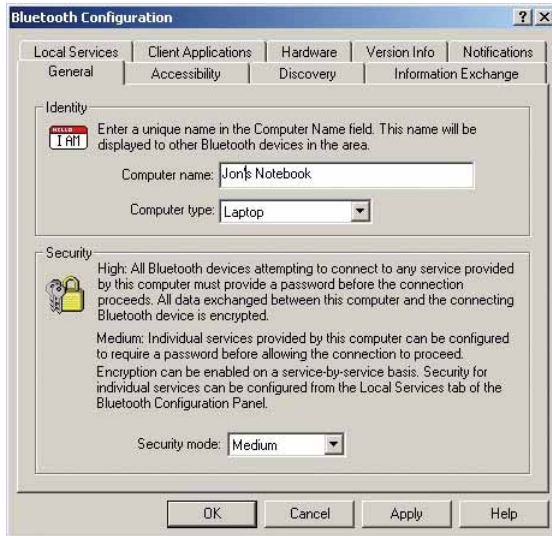
To customize the configuration settings of *Bluetooth* software for Windows operating system, follow the instructions described below:

1. Right-click on the *Bluetooth* icon on the right-hand side of the task bar of your screen. The “Bluetooth Configuration” window appears to allow you to customize the configuration settings of “Explore”, “Setup”, or “Services”. In the “Setup” menu, there are two extended items, “Security” and “Configuration”.



BLUETOOTH CONFIGURATION SETTINGS

2. Click on "Configuration".
 - a) The "General" tab of "Configuration" allows you to customize the device's user name, type, and security type.
 - b) The "Accessibility" tab allows you to specify which individual devices are allowed to access the user's computer.
 - c) The "Discovery" tab allows you to specify which individual devices, type of, or class of device the user's computer is allowed access to.



BLUETOOTH CONFIGURATION SETTINGS

- d) The “Information Exchange” tab allows you to specify the location of different types of files.
- e) The “Local Services” tab indicates the services this computer makes available to the other computers.
- f) The “Client Applications” tab indicates the properties of each application.
- g) The “Hardware” tab indicates device information of the user’s hardware.
- h) The “Version Info” tab indicates the module version of the user’s software component.
- i) The “Notifications” tab lets you associate a sound (Windows *.wav file) with specific *Bluetooth* events.

“MY BLUETOOTH PLACES” PROGRAM

The “My Bluetooth Places” program provides a quick and easy way to perform different application services through *Bluetooth* connections. A variety of *Bluetooth* services and explanations of each service can be found in the “Help” file of the “My Bluetooth Places” program.

Bluetooth Services

Dial-Up Networking: Allows your computer (as client) to establish a *Bluetooth* wireless connection to a *Bluetooth* device (as server) to access the server’s modem service to the Internet.

Generic Serial: Allows your computer (as client) to establish a *Bluetooth* wireless connection to a *Bluetooth* device (as server) using a temporary serial port connection to allow legacy applications to utilize the *Bluetooth* connection.

LAN Access: Allows your computer (as client) to establish a *Bluetooth* wireless connection to a *Bluetooth* device (as server) to access the server’s connected LAN network service.

“MY BLUETOOTH PLACES” PROGRAM

Fax Client: Allows your computer (as client) to establish a *Bluetooth* wireless connection to a *Bluetooth* device (as server) to utilize the fax facility attached to the server.

FTP: Allows your computer (as client) to establish a *Bluetooth* wireless connection to a *Bluetooth* device (as server) to perform file system actions.

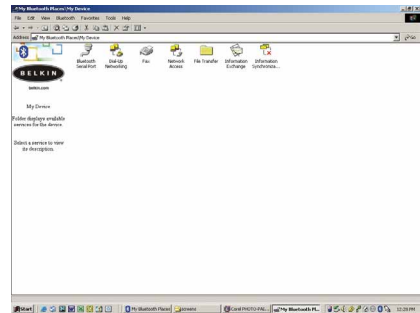
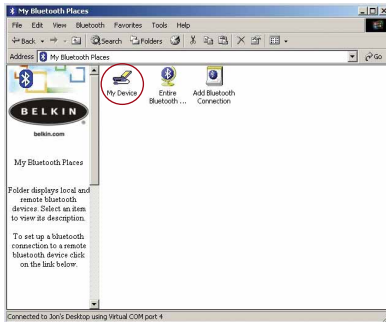
Inbox: Allows your computer (as client) to establish a *Bluetooth* wireless connection to a *Bluetooth* device (as server) to send files, e.g. business card, e-mail, etc., through server's personal information manager (PIM) actions.

OBEX IrMC Sync: Allows your computer (as client) to establish a *Bluetooth* wireless connection to a *Bluetooth* device (as server) to synchronize the two devices' mailing address book.

“MY BLUETOOTH PLACES” PROGRAM

To use the “My Bluetooth Places” program, follow the instructions described below:

1. Click “My Bluetooth Places” on your screen. Three icons—“My Device”, “Entire Bluetooth Neighborhood”, and “Add Bluetooth Connection”—appear inside the window.
2. Click “My Device” to see which of your application services are available to other devices. The icons without “X” indicate the available *Bluetooth* services.



“MY BLUETOOTH PLACES” PROGRAM

3. Click “Entire Bluetooth Neighborhood” from the “My Bluetooth Places” window to search for devices available to you. Once *Bluetooth* devices are detected, icons with device names will be displayed on your screen. You may initiate a search for devices by selecting “Bluetooth” from the toolbar of the “Entire Bluetooth Neighborhood” window.
4. Click on each available device, for example, a device named “Jon’s Desktop”, to see which services are available to you. Double-click on each icon to begin the different services.



UNINSTALLING THE SOFTWARE

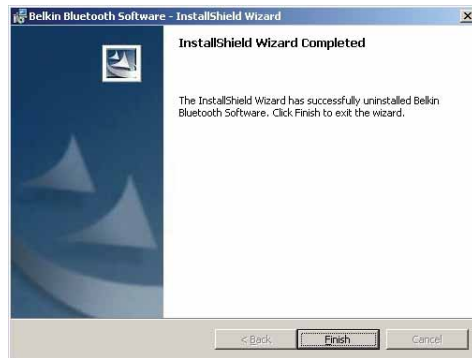
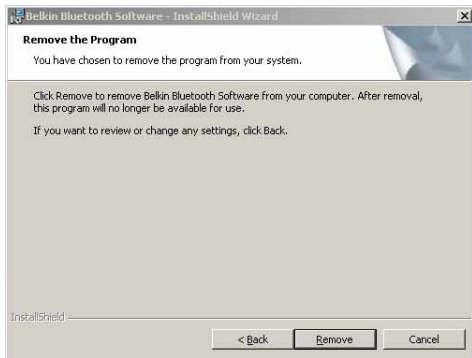
This section contains instructions for uninstalling the software required to use your USB Adapter.

1. Insert the CD-ROM included with your USB Adapter.
2. The "InstallShield Wizard" should automatically load. If it does not load, explore the CD and run the "Setup.exe" file.
3. The "InstallShield" window should now appear. Click "Next".



UNINSTALLING THE SOFTWARE

- Click "Remove" to initiate the UninstallShield Wizard and remove the software from your PC.
- Click "Finish" to complete the uninstall.



GLOSSARY

Authentication	Security feature that requires users to verify a numeric password before exchanging data.
Authorization	Security feature that requires user approval before another user is allowed to share data.
<i>Bluetooth Neighborhood</i>	A collection of <i>Bluetooth</i> devices.
Bonded Device	Recognized by your device so as not to require authentication or authorization.
Device	Device enabled with <i>Bluetooth</i> technology.
Device Address	Unique electronic address of a <i>Bluetooth</i> device.
Device Discovery	The location and recognition of one <i>Bluetooth</i> device by another.
Device Group	Compilation of several <i>Bluetooth</i> devices into a group, normally to conduct related tasks.
Device Name	Name that a <i>Bluetooth</i> device provides when discovered by another device.
Service Discovery	Determines which applications other devices have in common with yours.

FCC/CE/IC STATEMENTS

DECLARATION OF CONFORMITY WITH FCC RULES FOR ELECTROMAGNETIC COMPATIBILITY

We, Belkin Components, of 501 West Walnut Street, Compton, CA 90220, declare under our sole responsibility that the product,

F8T003

This device complies with Part 15 of the FCC Rules. Operation is subject to the following two conditions: (1) this device may not cause harmful interference, and (2) this device must accept any interference received, including interference that may cause undesired operation.

Caution: Exposure to Radio Frequency Radiation.

The radiated output power of this device is far below the FCC radio frequency exposure limits. Nevertheless, the device shall be used in such manner that the potential for human contact normal operation is minimized.

When connecting an external antenna to the device, the antenna shall be placed in such a manner to minimize the potential for human contact during normal operation. In order to avoid the possibility of exceeding the FCC radio frequency exposure limits, human proximity to the antenna shall not be less than 20cm (8 inches) during normal operation.

Federal Communications Commission Notice

This equipment has been tested and found to comply with the limits for a Class B digital device, pursuant to Part 15 of the FCC Rules. These limits are designed to provide reasonable protection. This equipment generates, uses and can radiated radio frequency energy and, If not installed and used in accordance with the instructions, may cause

FCC/CE/IC STATEMENTS

harmful interference to radio communications. However, there is no guarantee that interference will not occur in a particular installation. If this equipment does cause harmful interference to radio or television reception, which can be determined by turning the equipment off and on, the user is encouraged to try to correct the interference by one or more of the following measures:

- Reorient or relocate the receiving antenna.
- Increase the separation between the equipment and the receiver.
- Connect the equipment into an outlet on a circuit different from that to which the receiver is connected.
- Consult the dealer or an experienced radio/TV technician for help.

Modifications

The FCC requires the user to be notified that any changes or modifications to this device that are not expressly approved by Belkin Components may void the user's authority to operate the equipment.

Canada-Industry Canada (IC)

The wireless radio of this device complies with RSS 139 & RSS 210 Industry Canada. This Class B digital complies with Canadian ICES-003.

Cet appareil numérique de la classe B conforme à la norme NMB-003 du Canada.

Europe-European Union Notice

Radio products with the CE 0560 or CE alert marking comply with the R&TTE Directive (1995/5/EC) issued by the Commission of the European Community.

FCC/CE/IC STATEMENTS

Compliance with this directive implies conformity to the following European Norms (in brackets are the equivalent international standards).

- EN 60950 (IEC60950) – Product Safety
- EN 300 328 Technical requirement for radio equipment
- ETS 300 826 General EMC requirements for radio equipment.

To determine the type of transmitter, check the identification label on your Belkin product.

Products with the CE marking comply with the EMC Directive (89/336/EEC) and the Low Voltage Directive (72/23/EEC) issued by the Commission of the European Community. Compliance with these directives implies conformity to the following European Norms (in brackets are the equivalent international standards).

- EN 55022 (CISPR 22) – Electromagnetic Interference
- EN 55024 (IEC61000-4-2,3,4,5,6,8,11)- Electromagnetic Immunity
- EN 61000-3-2 (IEC610000-3-2) - Power Line Harmonics
- EN 61000-3-3 (IEC610000) – Power Line Flicker
- EN 60950 (IEC60950) – Product Safety

Products that contain the radio transmitter are labeled with CE 0560 or CE alert marking and may also carry the CE logo.



INFORMATION

Belkin Corporation Limited One-Year Product Warranty

Belkin Corporation warrants this product against defects in materials and workmanship for its warranty period. If a defect is discovered, Belkin will, at its option, repair or replace the product at no charge provided it is returned during the warranty period, with transportation charges prepaid, to the authorized Belkin dealer from whom you purchased the product. Proof of purchase may be required.

This warranty does not apply if the product has been damaged by accident, abuse, misuse, or misapplication; if the product has been modified without the written permission of Belkin; or if any Belkin serial number has been removed or defaced.

THE WARRANTY AND REMEDIES SET FORTH ABOVE ARE EXCLUSIVE IN LIEU OF ALL OTHERS, WHETHER ORAL OR WRITTEN, EXPRESSED OR IMPLIED. BELKIN SPECIFICALLY DISCLAIMS ANY AND ALL IMPLIED WARRANTIES, INCLUDING, WITHOUT LIMITATION, WARRANTIES OF MERCHANTABILITY AND FITNESS FOR A PARTICULAR PURPOSE.

No Belkin dealer, agent, or employee is authorized to make any modification, extension, or addition to this warranty.

BELKIN IS NOT RESPONSIBLE FOR SPECIAL, INCIDENTAL, OR CONSEQUENTIAL DAMAGES RESULTING FROM ANY BREACH OF WARRANTY, OR UNDER ANY OTHER LEGAL THEORY, INCLUDING BUT NOT LIMITED TO, LOST PROFITS, DOWNTIME, GOODWILL, DAMAGE TO OR REPROGRAMMING, OR REPRODUCING ANY PROGRAM OR DATA STORED IN, OR USED WITH, BELKIN PRODUCTS.

Some states do not allow the exclusion or limitation of incidental or consequential damages or exclusions of implied warranties, so the above limitations of exclusions may not apply to you. This warranty gives you specific legal rights, and you may also have other rights that vary from state to state.



belkin.com

Belkin Corporation

501 West Walnut Street
Compton • CA • 90220 • USA
Tel: 310.898.1100
Fax: 310.898.1111

Belkin Components, Ltd.

Express Business Park
Shipton Way • Rushden • NN10 6GL
United Kingdom
Tel: +44 (0) 1933 35 2000
Fax: +44 (0) 1933 31 2000

Belkin Components, Ltd.

7 Bowen Crescent • West Gosford
NSW 2250 • Australia
Tel: +61 (0) 2 4372 8600
Fax: +61 (0) 2 4372 8603

P74180

© 2002 Belkin Corporation. All rights reserved. All trade names are registered trademarks of respective manufacturers listed.
The Bluetooth name and the Bluetooth trademarks are owned by Bluetooth SIG, Inc., and are used by Belkin Corporation under license.
Mac, Mac OS, and Apple are trademarks of Apple Computer, Inc., registered in the U.S. and other countries.