

### ***Federal Communication Commission Interference Statement***

This equipment has been tested and found to comply with the limits for a Class B digital device, pursuant to Part 15 of the FCC Rules. These limits are designed to provide reasonable protection against harmful interference in a residential installation.

This equipment generates, uses and can radiate radio frequency energy and, if not installed and used in accordance with the instructions, may cause harmful interference to radio communications. However, there is no guarantee that interference will not occur in a particular installation. If this equipment does cause harmful interference to radio or television reception, which can be determined by turning the equipment off and on, the user is encouraged to try to correct the interference by one of the following measures:

- Reorient or relocate the receiving antenna.
- Increase the separation between the equipment and receiver.
- Connect the equipment into an outlet on a circuit different from that to which the receiver is connected.
- Consult the dealer or an experienced radio/TV technician for help.

***FCC Caution*** :To assure continued compliance, any changes or modifications not expressly approved by the party responsible for compliance could void the user's authority to operate this equipment. (Example - use only shielded interface cables when connecting to computer or peripheral devices).

### ***FCC Radiation Exposure Statement***

This equipment complies with FCC RF radiation exposure limits set forth for an uncontrolled environment. This equipment should be installed and operated with a minimum distance of 20 centimeters between the radiator and your body.

This device complies with Part 15 of the FCC Rules. Operation is subject to the following two conditions:  
(1) This device may not cause harmful interference, and (2) This device must accept any interference received, including interference that may cause undesired operation.

# User Manual

## 1. Package Content

Before installation, please check if the following package content is missing. If anything missing, please contact your local distributor.

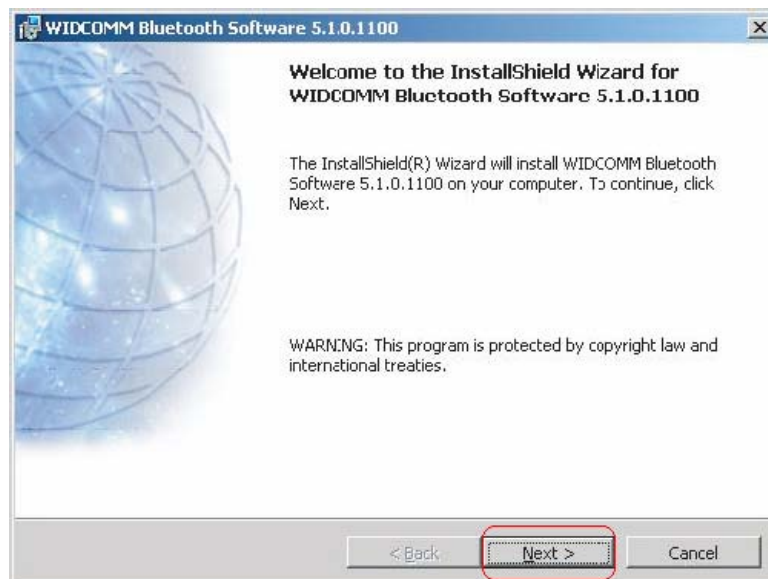
- Bluetooth Mini USB Adapter
- Software CD including User manual, Driver and utility

## 2. Installation steps

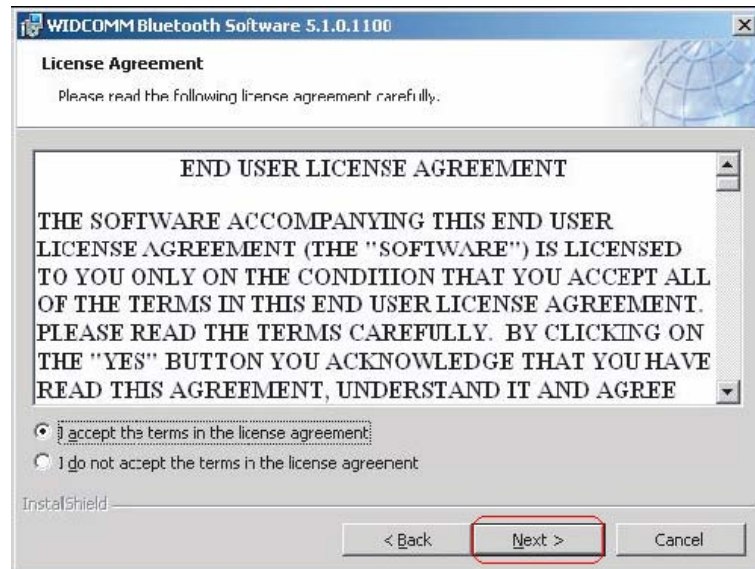
**NOTE :** Please install the USB Bluetooth Software Driver before plugging the USB adapter !

2-1. Place the installation CD-ROM into the PC, the setup should start automatically. If the setup does not start, please go to Windows Explorer, locate the CD-ROM and run [setup.exe].

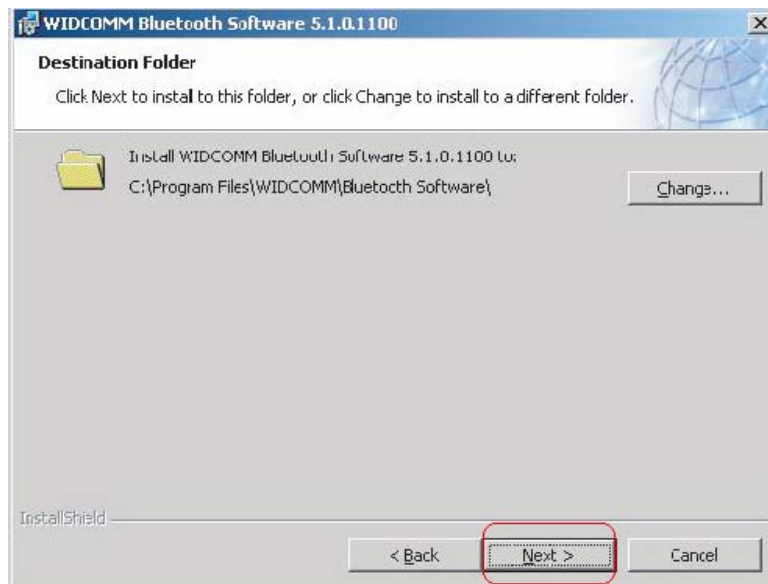
2-2. On the Welcome screen click [Next] to continue.



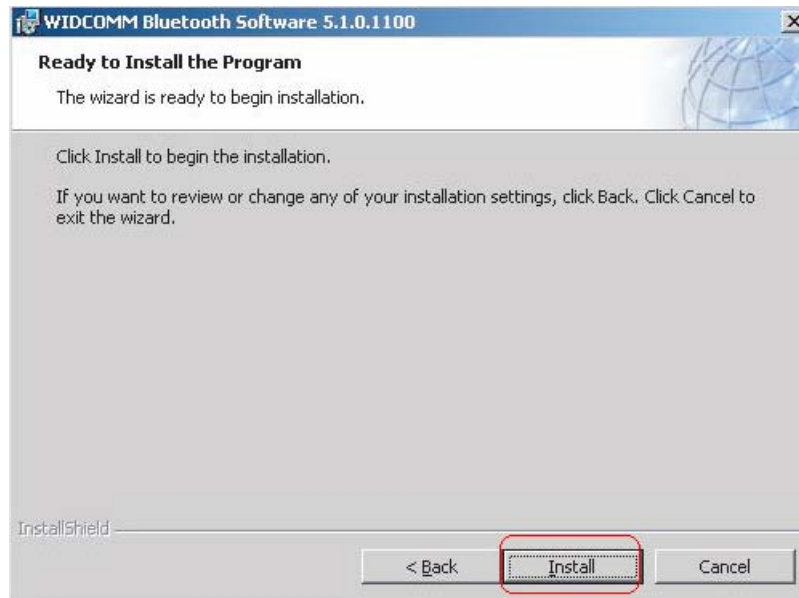
2-3. Read the License Agreement and select [I accept the terms in the license agreement]. Click [Next].



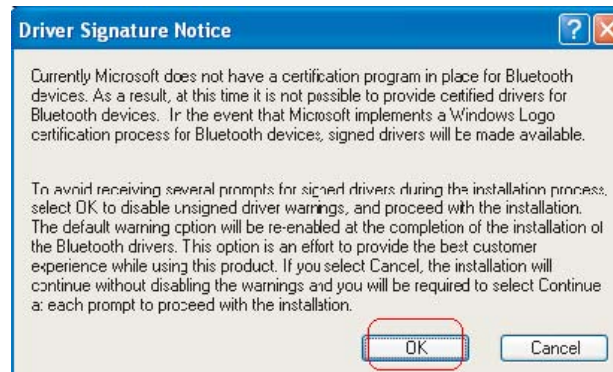
2-4. Click [Next] to accept the default destination folder, click [Change] to browse to a new destination folder for the Bluetooth software.



2-5. Click [Install] to begin the installation of the Bluetooth software.



2-6. For Windows 2000/XP users, a [Driver Signature Notice] window appears, please click the [OK] button.



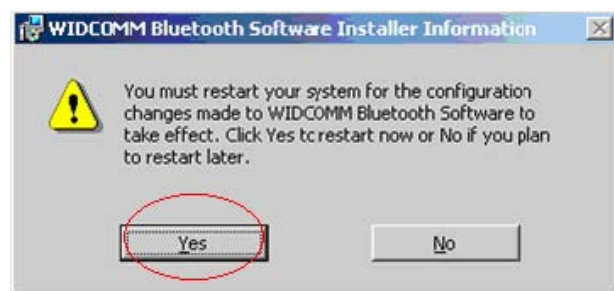
2-7. The [Bluetooth device not found] window appears. Plug the USB Bluetooth adapter into the USB port. Click [OK].



2-8. Click [Finish] to complete the Bluetooth software installation.



2-9. Click [Yes] to restart the computer and complete the installation.



2-10. After reboot your pc, the CD-ROM driver will be completely installed and the [Bluetooth icon] resides in the Windows system tray.



2-11. Click [start/(settings)/controlpanel/system/devicemanager]. Check under “ Bluetooth Devices” then a “ Bluetooth Device” is installed.

2-12. If the information is not presented, please unplug the Mini USB adapter, re-plug the CD-ROM to initiate the driver.