

# Bluetooth™ USB Adapter

Connect your peripherals and computing devices  
without cables

BU-2080J

BU-2081J

BU-2090J

BU-2091J

## Quick Installation Guide

### Introduction

#### PC System Requirements

PC-compatible computer, CPU speed of 200MHz or above

Memory: 64MB or above, 128MB recommended

One available USB port, USB 1.1 standard

Windows® 98 SE, Me, 2000, and XP

#### Product Contents

Bluetooth USB Adapter

CD-ROM for installation software and documentation

Quick Installation Guide

1

### Step 1: Software Setup

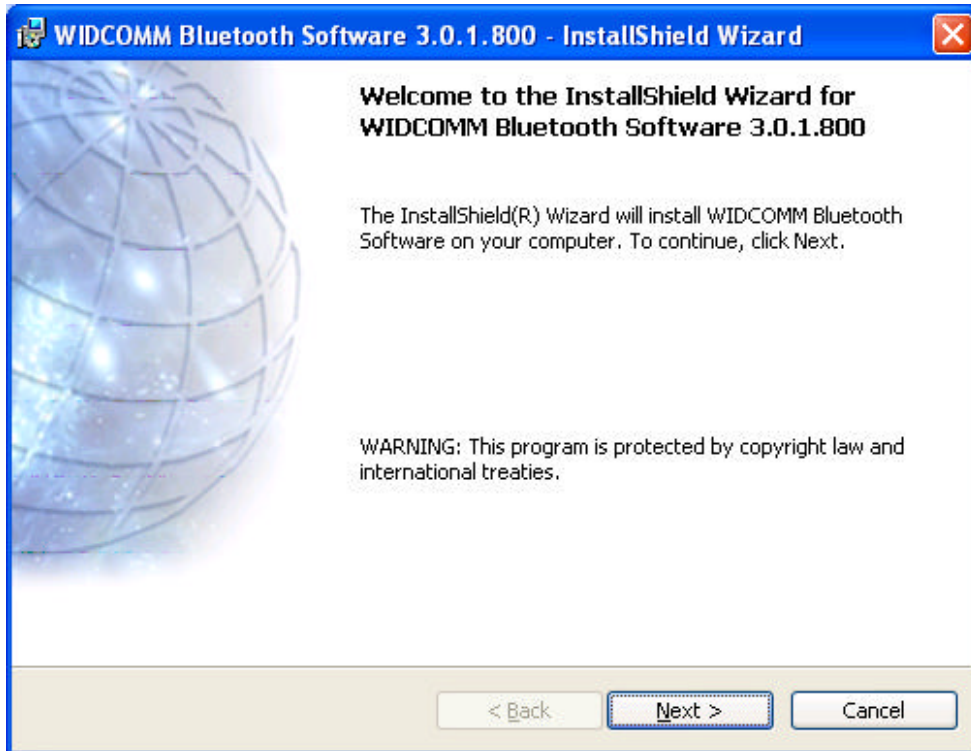
#### Software Setup for Windows 98 SE, Me, 2000, and XP

To install the software for the USB Adapter, follow the instructions below:

Note: The installation process for Windows XP may look slightly different from Windows 98 SE, Me, and 2000.

Note: Do not insert the USB Adapter into the USB port prior to software installation.

1. Insert the software installation CD-ROM into the PC's CD-ROM drive.
2. The "Software InstallShield Wizard" window appears. Click on "Next" to begin the installation process.



2

## Step 1: Software Setup

3. Choose " I accept the terms in the license agreement " to accept the license agreement. Click on " Next " to continue.

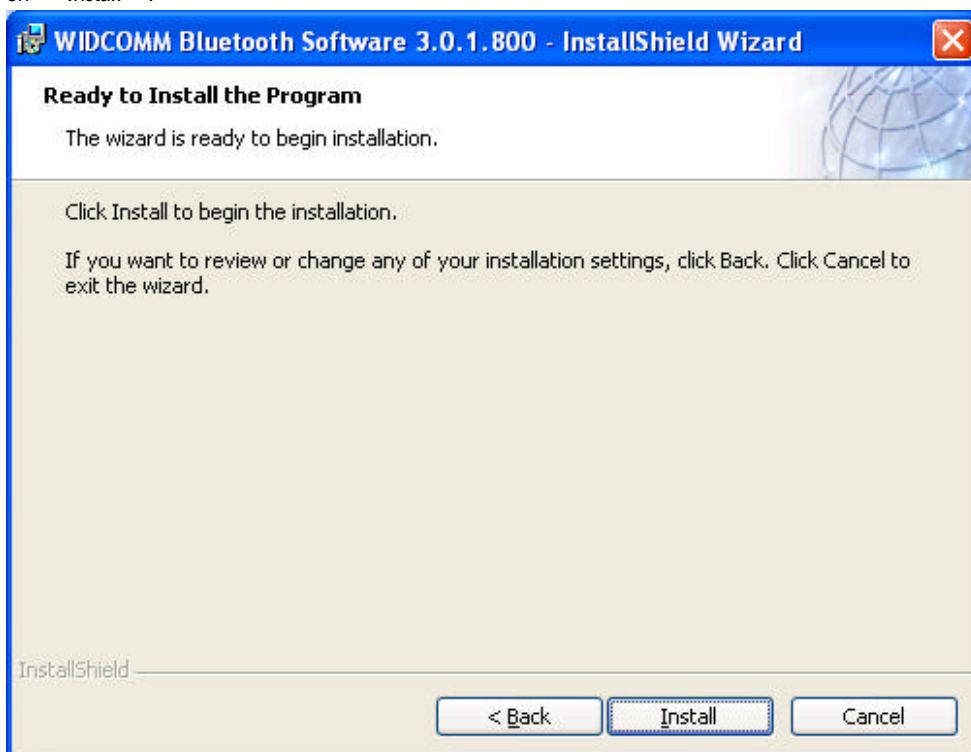


4. Specify the location where the software files will be installed on your hard drive. It is recommended that you install the software in the default directory "C:\Program Files\WIDCOMM\Bluetooth Software\". Click on "Next" to continue.



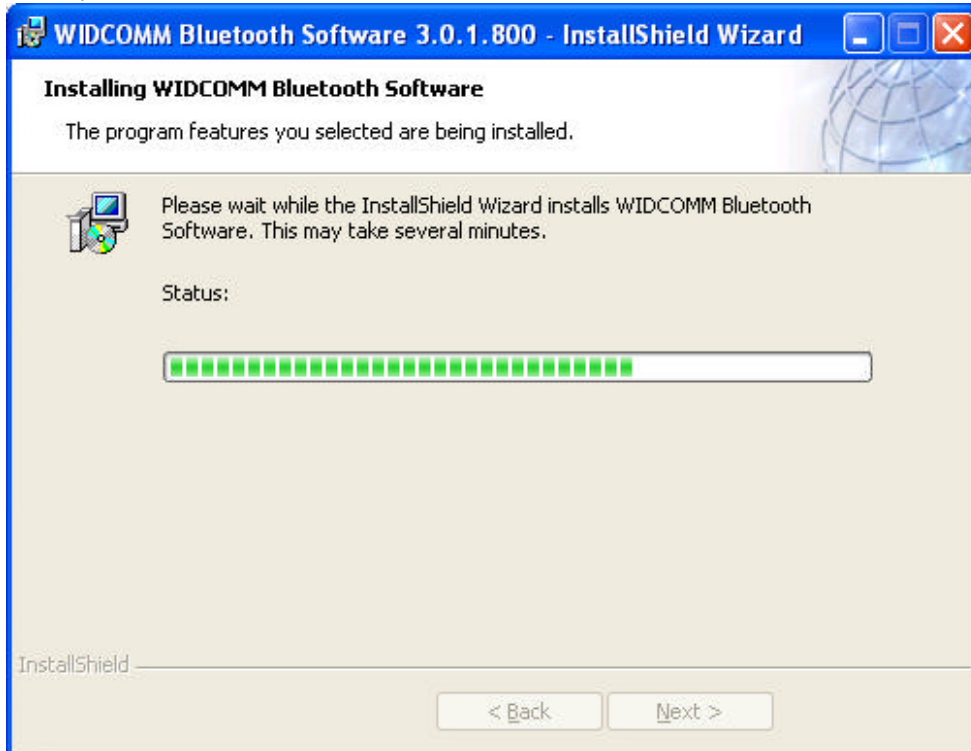
3

5. Confirm that the device software is ready to be installed and click on " Install " .



6. The InstallShield Wizard will begin to install the Bluetooth Software.

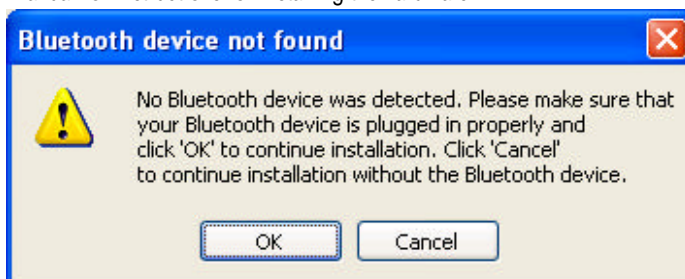
This may take several minutes.



4

## Step 1: Software Setup

7. During the installation process you may be prompted to insert your USB Adapter. If your USB Adapter is not plugged into your computer at this time, you may insert it into an available USB 1.1-compliant port on your desktop or notebook computer, then click “ OK ” to continue. Click on “ Cancel ” to continue installation without the Bluetooth device inserted. Refer to the “ Hardware Installation ” section of this User Manual for instructions for installing the hardware.



Note: If at any time during the installation process you receive a “ Driver Signature Notice ”, click “ OK ” to continue the installation process.

5

## Step 1: Software Setup

8. Confirm the completion of the software installation; click “ Finish ” and restart the system if prompted to do so.



6

## Step 1: Software Setup

### Hardware Setup for Windows 98 SE, Me, 2000, and XP

Follow these instructions to install your USB Adapter on your PC.

Note: Your USB Adapter is sensitive to static electricity, which can damage its delicate electrical components. To protect your device, always touch the metal chassis of your computer before handling the USB Adapter. This will ground any potential electrostatic discharge. Avoid touching the metal connector when handling the USB Adapter. Dry weather conditions or walking across carpeted floors may cause you to acquire an electrostatic charge.

1. Connect the USB Adapter directly to an

available USB A-type connector on your desktop or notebook computer. Your system should register a new USB device found.

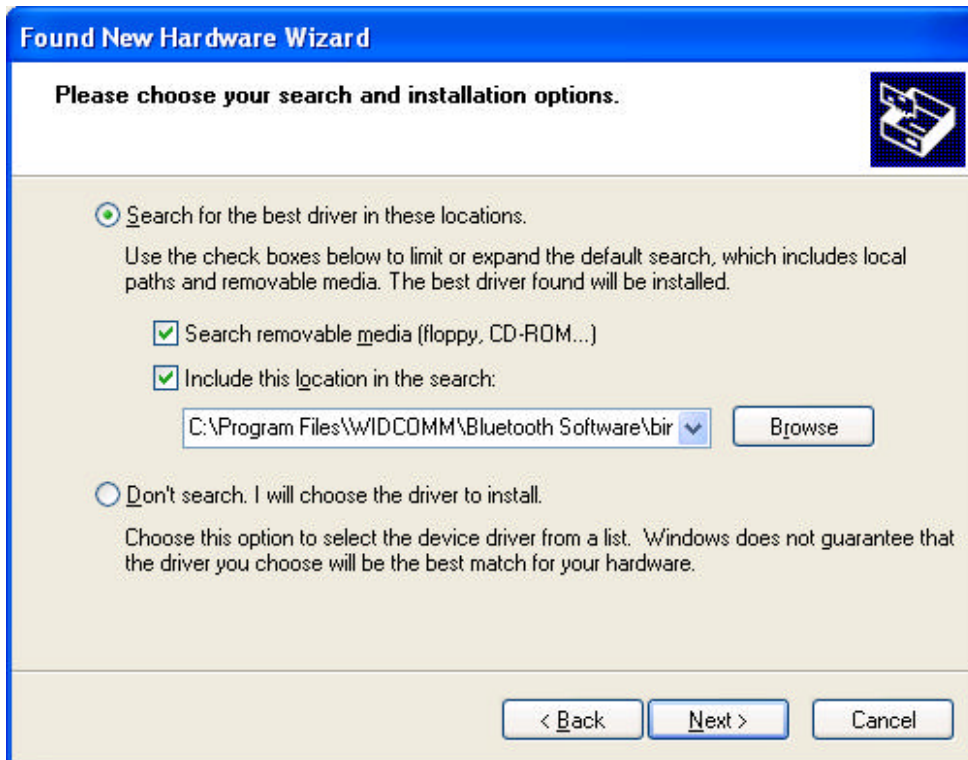
2. Choose “ Install from a list or specific location ” ; then click “ Next ” .



## Step 2: Hardware Setup

7

3. Browse for the location of the device driver “ \Program Files\WIDCOMM\Bluetooth\Software\bin\ ” then click “ Next ” .



4. If you receive the following “ Hardware installation notice ” , click on “ Continue Anyway ” to continue with the installation process.





## Step 2: Hardware Setup

5. A window will appear that confirms the completion of the hardware installation; click on “ Finish ” to complete the installation process.



## Step 2: Hardware Setup

9

### Uninstalling the Software for Windows 98 SE, Me, 2000, and XP

Follow these instructions to uninstall your USB Adapter on your PC.

1. Insert the CD-ROM included with your USB Adapter.
2. This “ InstallShield Wizard ” should automatically load. If it does not load, explore the CD and run the “ Setup.exe ” file.
3. The “ InstallShield ” window should now appear. Click “ Next ” to continue with the uninstall process.

10

## ***Federal Communication Commission Interference Statement***

This equipment has been tested and found to comply with the limits for a Class B digital device, pursuant to Part 15 of the FCC Rules. These limits are designed to provide reasonable protection against harmful interference in a residential installation.

This equipment generates, uses and can radiate radio frequency energy and, if not installed and used in accordance with the instructions, may cause harmful interference to radio communications. However, there is no guarantee that interference will not occur in a particular installation. If this equipment does cause harmful interference to radio or television reception, which can be determined by turning the equipment off and on, the user is encouraged to try to correct the interference by one of the following measures:

- Reorient or relocate the receiving antenna.
- Increase the separation between the equipment and receiver.
- Connect the equipment into an outlet on a circuit different from that to which the receiver is connected.
  
- Consult the dealer or an experienced radio/TV technician for help.

***FCC Caution*** :To assure continued compliance, any changes or modifications not expressly approved by the party responsible for compliance could void the user's authority to operate this equipment. (Example - use only shielded interface cables when connecting to computer or peripheral devices).

This device complies with Part 15 of the FCC Rules. Operation is subject to the following two conditions:

- (1) This device may not cause harmful interference, and
- (2) This device must accept any interference received, including interference that may cause undesired operation.