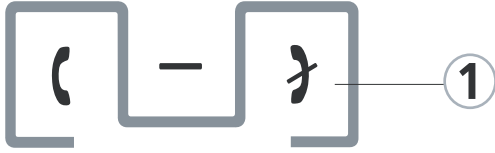


# Xpress VoIP Phone Quick Startup

## Connecting the phone to your notebook

- 1** Press the button for 2 seconds. The phone will beep twice and the orange LED will flash.
- 按下 按鈕 2 秒鐘。電話會發出兩聲響聲並閃爍橘色 LED。

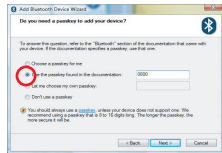


- 2** Press the button for 3 seconds. The phone will beep twice and the blue LED will flash.
- 按下 按鈕 3 秒鐘。電話會發出兩聲響聲並閃爍藍色 LED。

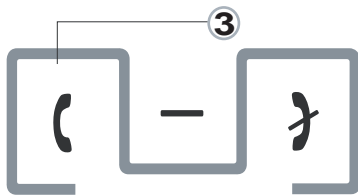


**Lightbulb icon:** Pairing Your Headset and Bluetooth Devices  
將耳機與藍芽周邊進行配對

Enter "0000" and press OK.  
密碼為 "0000"



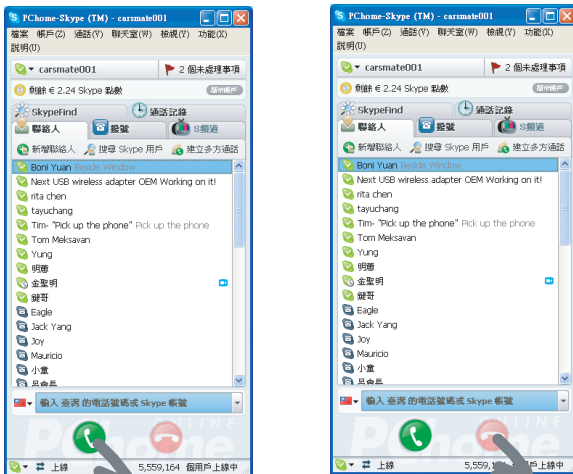
- 3** Press the button links VoIP phone with Bluetooth laptop or device
- 按下 按鈕將VoIP話機與電腦或周邊連線



## Using the phone

When you receive an incoming call via instant messenger (MSN or Skype), just press to answer the call. Press to end the call.

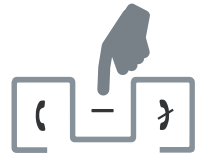
- 接聽來電請選擇 來進行接聽 掛斷來電請選擇



## Switching from headset to speakerphone

Press the Function button

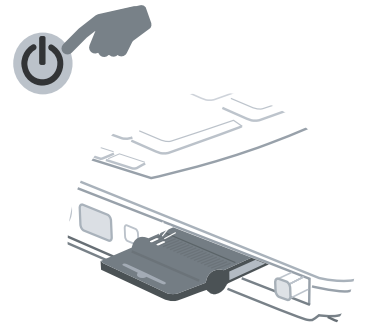
- 按下「Function (功能)」按鈕
- 按下功能鍵。



## Charging the phone

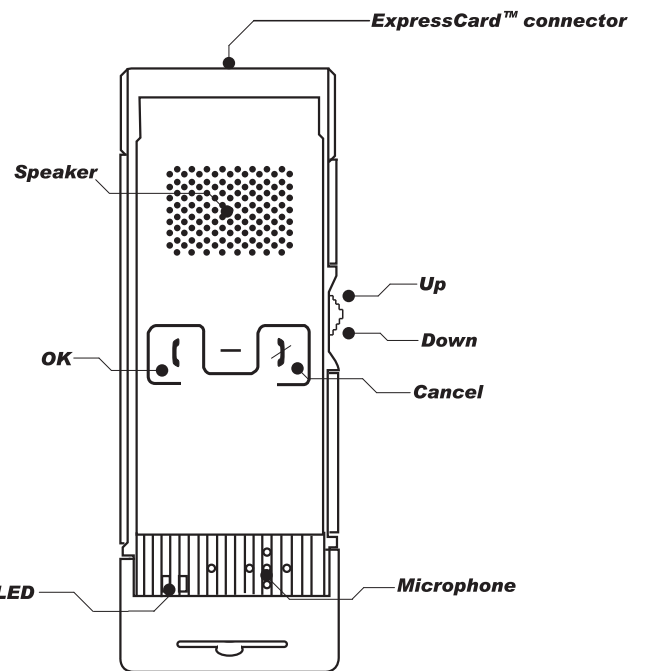
- 1** Turn the notebook on

- 首先，開啓筆記型電腦的電源。



- 2** Locate the Express Card slot.

- 置入 Express Card 卡插槽。



Name	Function	Description
<b>Up</b>	Volume up	Increase volume
<b>Down</b>	Volume down	Volume down page down Decrease volume
<b>OK</b>	Answer	Answer an incoming call
<b>Function</b>	BT pairing HS/HF	Hold for at least 3 seconds to enable BT pairing Switch between headset hands-free after the call is accepted
<b>Cancel</b>	Hang up Switch on/off	Hang up the call Hold for at 2 seconds to power on/off
LED	Status	Description
<b>Amber</b>	Flashing	Power low
	Blinking	Switched on but not connected to a Laptop
<b>Blue</b>	Flashing	Busy pairing
	Blinking	Connected to a Laptop

## Xpress VoIP Phone Quick Startup

### **Federal Communication Commission Interference Statement**

This equipment has been tested and found to comply with the limits for a Class B digital device, pursuant to Part 15 of the FCC Rules. These limits are designed to provide reasonable protection against harmful interference in a residential installation.

This equipment generates, uses and can radiate radio frequency energy and, if not installed and used in accordance with the instructions, may cause harmful interference to radio communications. However, there is no guarantee that interference will not occur in a particular installation. If this equipment does cause harmful interference to radio or television reception, which can be determined by turning the equipment off and on, the user is encouraged to try to correct the interference by one of the following measures:

- . Reorient or relocate the receiving antenna.
- . Increase the separation between the equipment and receiver.
- . Connect the equipment into an outlet on a circuit different from that to which the receiver is connected.
- . Consult the dealer or an experienced radio/TV technician for help.

***FCC Caution:*** To assure continued compliance, any changes or modifications not expressly approved by the party responsible for compliance could void the user's authority to operate this equipment. (Example - use only shielded interface cables when connecting to computer or peripheral devices).

This device complies with Part 15 of the FCC Rules. Operation is subject to the following two conditions:

(1) This device may not cause harmful interference, and (2) This device must accept any interference received, including interference that may cause undesired operation.