

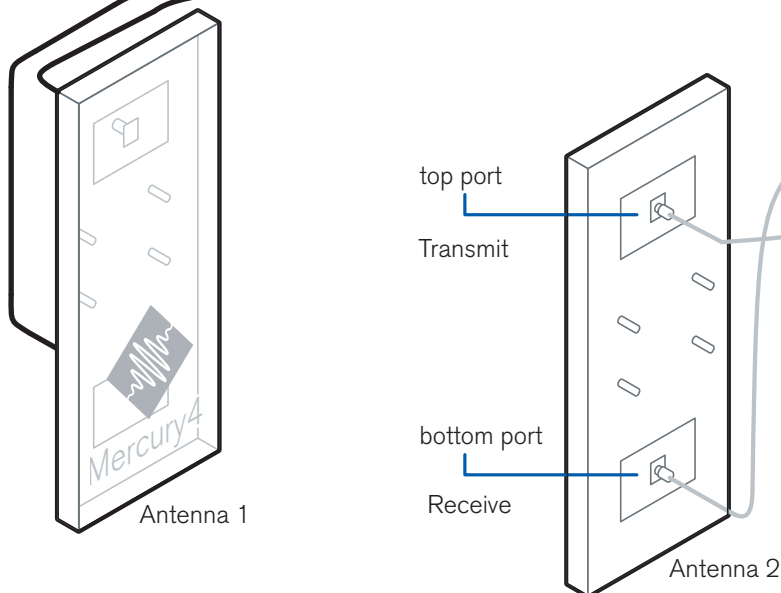
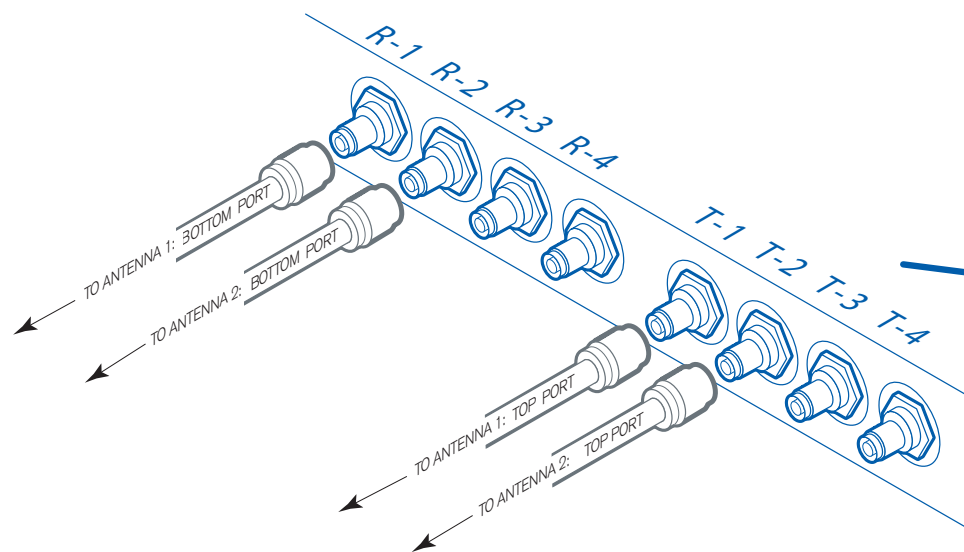
# Get Set Up In Minutes

## 1 Connect Antennas

Assembling your Mercury4/5 system is easy. Just make sure that you have all the supplied hardware and connection cables as well as access to a computer.

NOTE: These instructions assume you are using **at least 20'** antenna cabling. If this is not the case, refer to p. 15 of this User Guide: "Setting the Reader's Maximum RF Power" to reset the power.

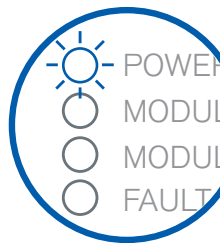
- Place the antennas upright.
- Connect the top port of the first antenna to the T-1 port on the reader. Connect its bottom port to the reader's R-1 port. (See diagram below.)
- Repeat for additional antennas, if supplied, using the T-2 and R-2 ports, etc.



## 2 Power Up

NOTE: Before connecting the power adapter to the reader, make sure all connections are securely fastened and the reader is connected to a crossover Ethernet cable.

- Connect the reader to an electrical outlet using the power adapter. The green Power LED should now be lit. Wait about 60 seconds for the reader to start up. When the start-up process is complete, the Power LED will be off.



## 3 Connect to PC

Connect the reader to your computer using a crossover Ethernet cable.

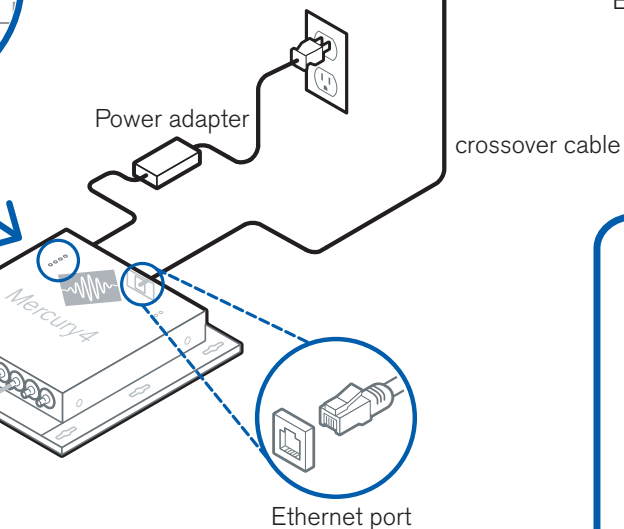
- Set your computer to use the IP address 10.10.10.10. Check with your network administrator if you need to install **special software to install.**
- Launch your Internet browser (e.g. Internet Explorer) and enter the reader's default IP address in the address bar. (This is the reader's default IP Address.)
- Enter the default user name 'web' and the default password to read tags.

reader, make sure all antenna  
connected to your PC with a

power cord and adapter.

LED will begin to pulse.

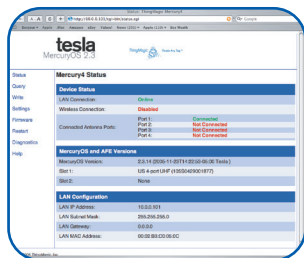
LED panel



Ethernet port

crossover cable

Ethernet port



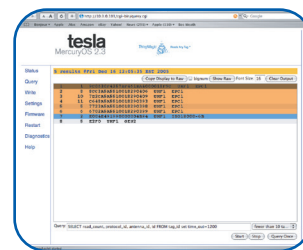
10.0.102 and a netmask of 255.255.255.0.  
are unsure how to do this. **There is no**

Explorer) and type 10.0.0.101 into the  
address). The reader's status screen will

default password 'radio'. You are now ready



Ready to read



Tags found

## 4 Read Tags

Click the "Query" link on the left of the Status page. A Java program will load. You may need to enter the username and password again.

Once this program is loaded, choose an appropriate query from the pull-down list at the bottom of the screen, based on the type and quantity of tags you want to read. Click the "start" button.

Hold some tags a few feet from the antenna. Tag reads will appear in the screen. The colors indicate protocol type. They fade over time to show tags that haven't been seen recently. To stop reading, press 'stop'.