

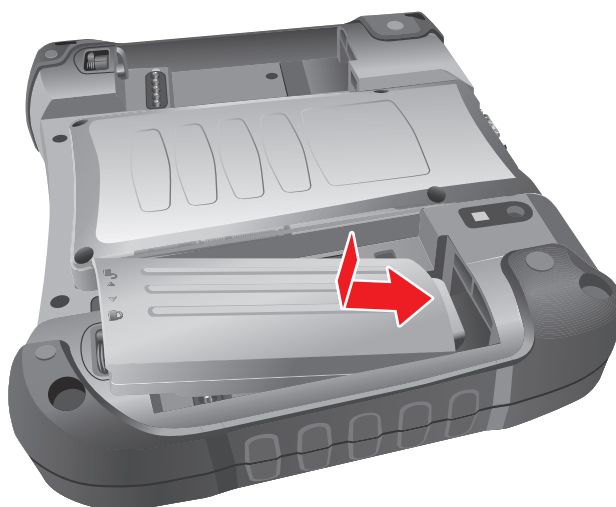
Installing the Battery Pack

NOTE:

- The battery pack(s) are hot-swappable.

Perform the following to install the battery pack to M9020:

1. From the top side of the battery pack, align and place the battery on its bay.
2. Press down on the battery pack.



3. Press down on the battery pack and rotate the lock latch to the lock (🔒) direction, until the battery pack is fixed.



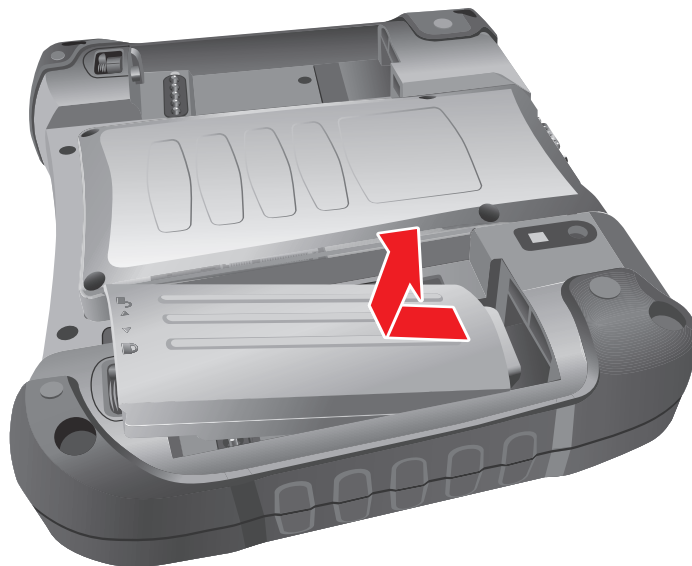
Removing the Battery Pack

Perform the following to remove the battery pack from M9020:

1. Rotate the lock latch to the unlock (🔓) direction, until the battery pack is released from the socket.



2. Release the battery pack from the bay, and remove.



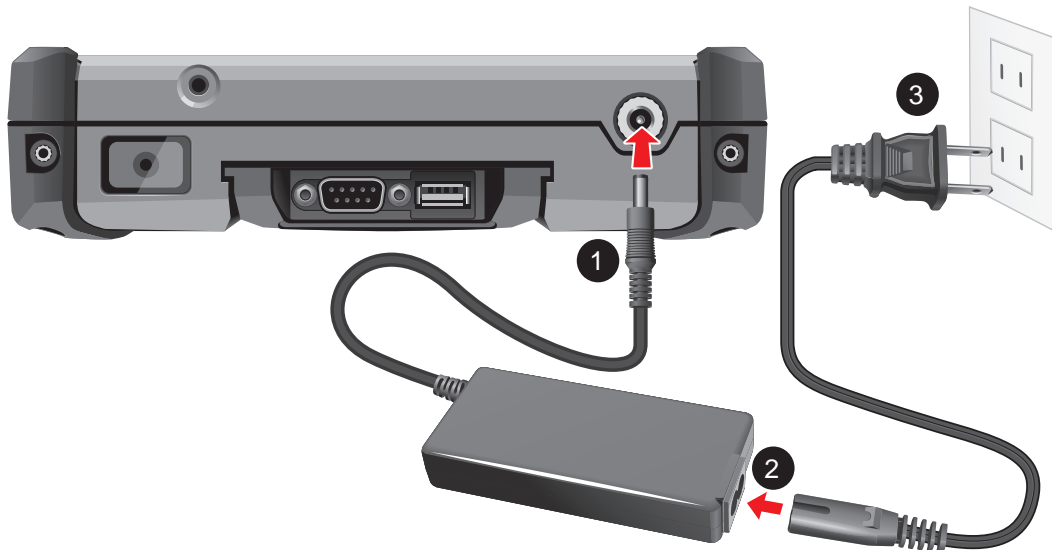
Connecting to AC Power

The M9020 operates either on external AC power or internal battery power. It is recommended to use AC power when you start up the device for the first time.

CAUTION: Use only the AC adapter included with your M9020. Using other AC adapters may damage M9020.

Perform the following to connect the M9020 to AC power:

1. Plug the DC cord of the AC adapter into the power connector of the M9020.
2. Plug the female end of the AC power cord into the AC adapter.
3. Then plug the male end of the AC power cord into an electrical outlet.



When the AC adapter is connected, the battery pack is charging.

CAUTION:

- When you disconnect the AC adapter, disconnect from the electrical outlet first and then from M9020. A reverse procedure may damage the AC adapter or M9020.
- When unplugging the connector, always hold the plug head. Never pull on the cord.

Turning the M9020 On and Off

Turning On

1. Make sure that the M9020 is either connected to AC power or that the battery pack is charged.
2. Press and hold the power button (⏻) for about 5 seconds, until the power LED lights up.



See the following table for the power LED indicator states:

LED Color	Status	Battery Mode (On Battery Power)	AC Mode (On External Power)
Green	Solid	Power on.	Fully charged: Both batteries are fully charged.
	Blinking	Suspend: Every 3 seconds.	
Blue	Solid	N/A	Either battery is being charged.
Red	Blinking	(The average of two batteries) <ul style="list-style-type: none"> • <= 20%: every 5s. • <= 15%: every 3s. • <= 10%: every 1s. • 5%: Hibernate. (Depends on OS setting). 	N/A
	Solid	Either Battery #1 or Battery #2 is missing.	N/A

Turning Off

To turn off the M9020, use the “**Shut Down**” command of your operating system.

CAUTION: Wait for at least five seconds after turning off the M9020 before turning it back on.

When you finish a working session, you can stop the device by shutting it down or by leaving it in Sleep or Hibernation mode:

To stop in this mode...	Do this...
Off	Use the Windows Start Menu and follow the shut down procedure.
	You can force M9020 to turn off by pressing and holding the power button (⏻) for more than 6 seconds. This is not the recommended method, but may be necessary if the system is locked up.
Hybrid Sleep	Short press the power button (⏻) or use the Windows Start Menu to put M9020 in Hybrid Sleep mode.
Hibernation	Use the Windows Start Menu to put M9020 in hibernation mode.

Press the power button (⏻) to resume or turn on the M9020 from any of these modes. See “Power Management” on page 4-6 for more information.

Operating Your Tablet Computer

This chapter provides information about the use of the M9020 and describes the operating basics of the following components and features:

- Touch Screen
- Keyboard
- Panel Keys
- Wireless LAN Features
- Bluetooth Features
- Wireless WAN Features
- GPS Features
- Camera
- DAP Control Center
- Barcode Reader

Using the Touch Screen

The touch screen is a touch-sensitive device that allows you to control and make selections on the device by controlling the location of the pointer on the screen.

CAUTION: Do not use sharp or pointed objects on the touch screen. These objects may scratch the screen. Use only the stylus pen or the tip of your finger.



Here are some common terms that you should know when using the touch screen.

Term	Action
Tap	Tap gently on the touch screen to select or open an item. Tapping is the same as clicking the left mouse button of a PC.
Double-tap	Rapidly tap twice on the touch screen. This action is similar to double-clicking the left mouse button of a PC.
Tap and hold	Tap and hold the stylus lightly on the display. A big circle appears to indicate that a pop-up menu will soon appear. Lift up the stylus and a pop-up menu appears. Select the desired function. This action is similar to a right mouse click on a PC.
Drag	Hold the stylus on the screen and drag across the screen to select text and images or move icons to a new location.

For more customized stylus settings, use the **HIDeGalaxTouch** available on the desktop of the device.

Calibrating the Screen

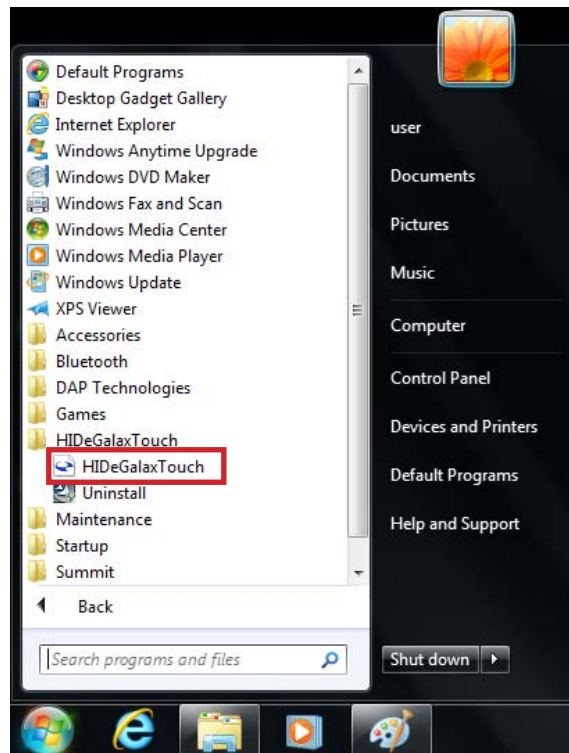
When there is a noticeable discrepancy in the placement of the stylus on the screen and the indicated position of the onscreen pointer, recalibrate the screen.

For calibration you can use the HIDEgalax Touch tool.

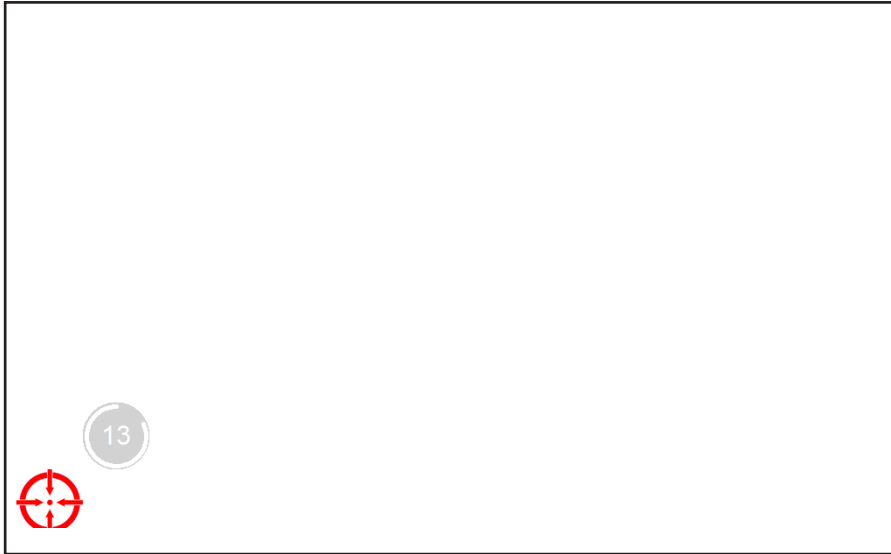
HIDEgalax Touch Calibration Tool

Perform the following to calibrate the screen:

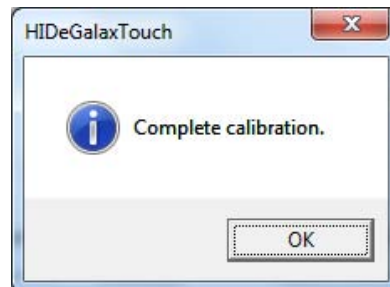
1. Tap **Start > All Programs > HIDEgalaxTouch > HIDEgalaxTouch**. The following screen opens.



2. For a basic test, tap **4 Points Calibration**, for more detailed one, tap **9 Points Linearization** or **25 Points Linearization**. The following example shows **4 Points Calibration**.



3. Use the supplied stylus to tap and hold the dot inside the red circle, until it turns into a blue circle. Repeat this process as the dot moves around the screen.
4. When calibration is complete, tap **OK** button and close the calibration utility screen.



Using the Integrated Keyboard

Your M9020 includes an integrated keyboard that allows you to enter text and perform various keyboard functions.

Keyboard Overview



Use the keyboard to type in text and numbers. If you need to use special symbols and functions, marked in *yellow* on the keyboard, press and hold the **Fn** key, and then press the corresponding symbol or function key. For example, to enter “%”, press and hold **Fn** key and then press the corresponding letter “**T**”.

Special Function Keys

The following is a list of special functions, accessible via keyboard.

Function	Description
Fn + ☀	Hold down Fn and press ▲ repeatedly to increase screen brightness.
Fn + ☀	Hold down Fn and press ▼ repeatedly to decrease screen brightness.
Fn + 🔊	Hold down Fn and press ► repeatedly to increases volume.
Fn + 🔊	Hold down Fn and press ◀ repeatedly to decreases volume.
Fn + 1	Function key F11 .
Fn + 2	Function key F12 .
Fn + 3	Function key F13 .
Fn + 4	Function key F14 .
Fn + 5	Function key F15 .
Fn + 6	Function key F6 .
Fn + 7	Function key F7 .
Fn + 8	Function key F8 .

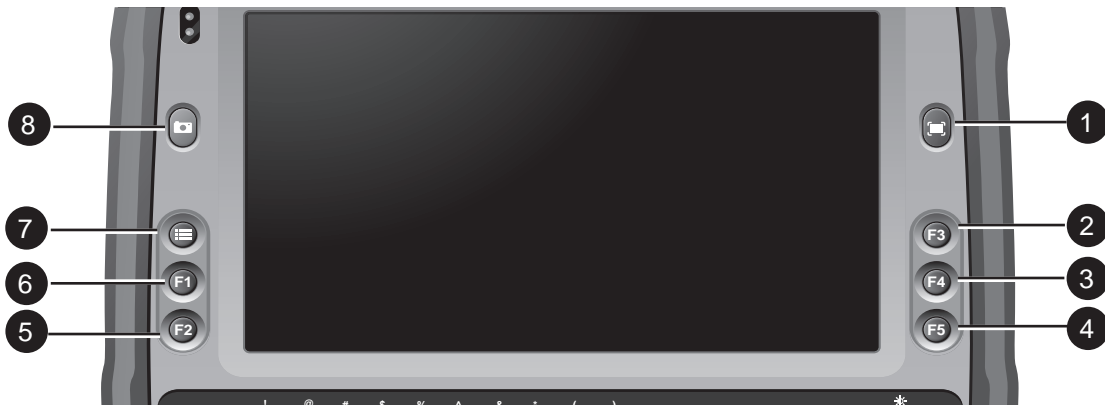
Function	Description
Fn + 9	Function key F9 .
Fn + 0	Function key F10 .
NOTE: To access the function keys F1 ~ F5 , see “Using the Panel Keys” on page 2-6.	

Navigation Keys

Use the navigations keys (◀ / ▶ / ▲ / ▼) to move the cursor or selection one space or line in the direction of the arrow, or scroll a webpage in the direction of the arrow.

Using the Panel Keys

The Panel Keys provide shortcuts for you to utilize the common functions of your M9020, such as opening the camera, activating the bar code reader, and more.



No.	Button	Description
1	Barcode Scanner	Press and hold, to scan the barcode.
2	F3	Programmable function key.
3	F4	Programmable function key.
4	F5	Tap to refresh the active window in Internet Explorer.
5	F2	Programmable function key.
6	F1	Programmable function key.

No.	Button	Description
7	Menu	Tap to open the Start menu.
8	Camera	Press to open the camera application. How to use the camera, see "Using the Camera" on page 2-26.

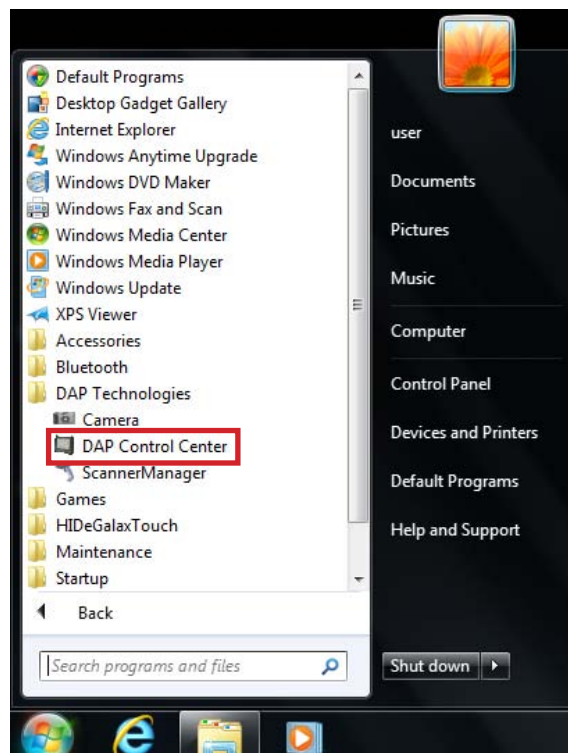
Using Wireless LAN

Your M9020 has a built-in wireless radio which automatically detects wireless networks that are within range.

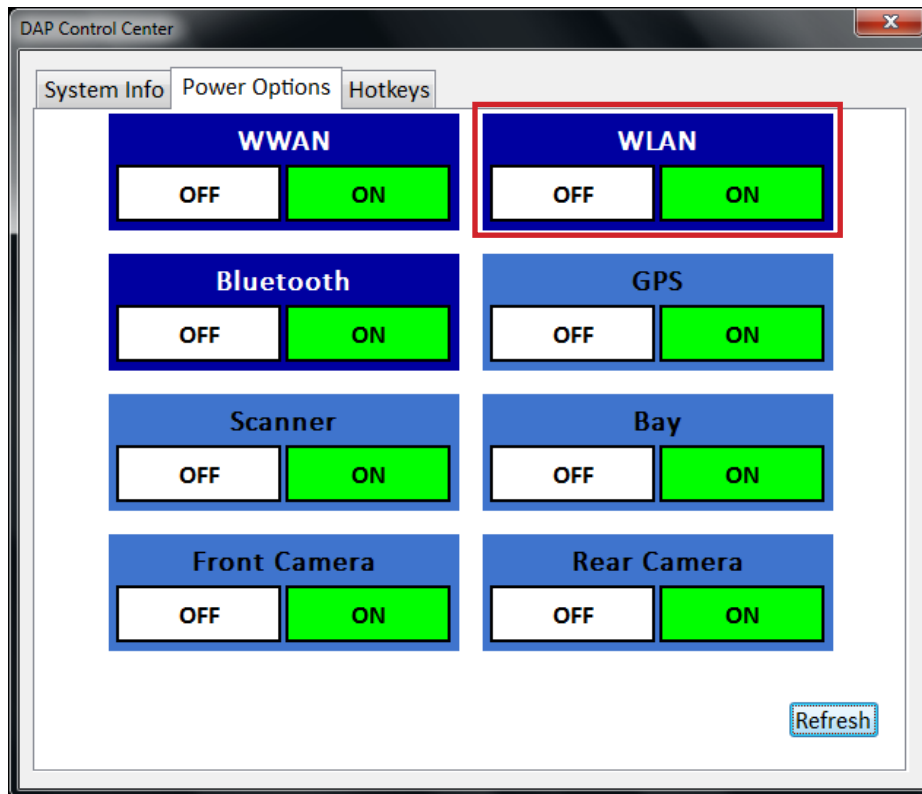
Turning the Wireless Radio On and Off

By default, the Wi-Fi is turned on. In case you need to turn it on or off, perform the following:

1. Tap **Start > All Programs > DAP Technologies > DAP Control Center**.





2. Select the **Power Options** tab.



3. To turn the Wi-Fi on or off, tap **ON** or **OFF** in the corresponding box.

Connecting to a Wireless Network

Perform the following to connect to a wireless network:

1. Make sure that the WLAN is ON (The Wireless network icon on the task bar shows ).
2. Tap the Wireless Network icon () on the taskbar.
3. From the list of available networks, select a network.




4. Tap **Connect**.
5. If the network requires authentication, enter the security key or passphrase.

NOTE:

- Once you are connected to a wireless network, Windows saves the network profile and will automatically connect to that network when it is in range.
- For more information on connecting to your wireless network, contact your network administrator.

Using Bluetooth

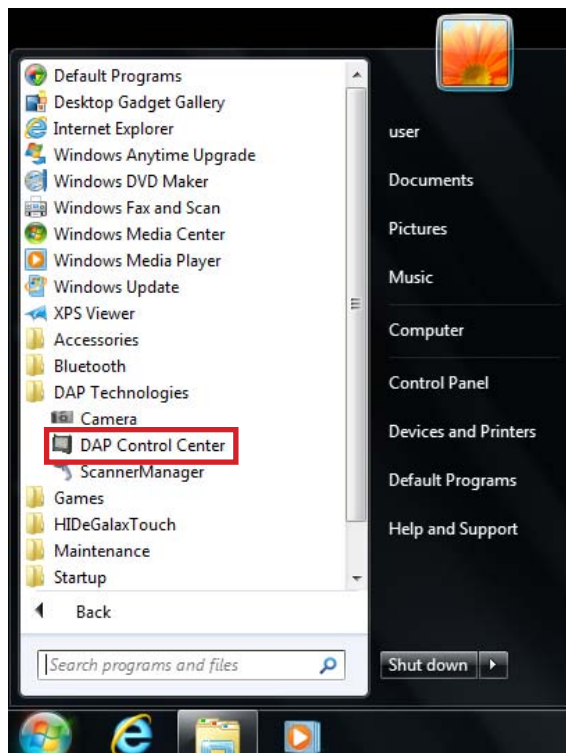
Your M9020 has integrated Bluetooth capability for short-range wireless communication between Bluetooth-enabled devices.

By default, the Bluetooth feature is enabled as indicated by the Bluetooth icon () on the taskbar; but your M9020 is not visible to other devices. To make your M9020 visible, check the **Discovery** box in Bluetooth settings (see “Configuring Bluetooth Settings” on page 2-15).

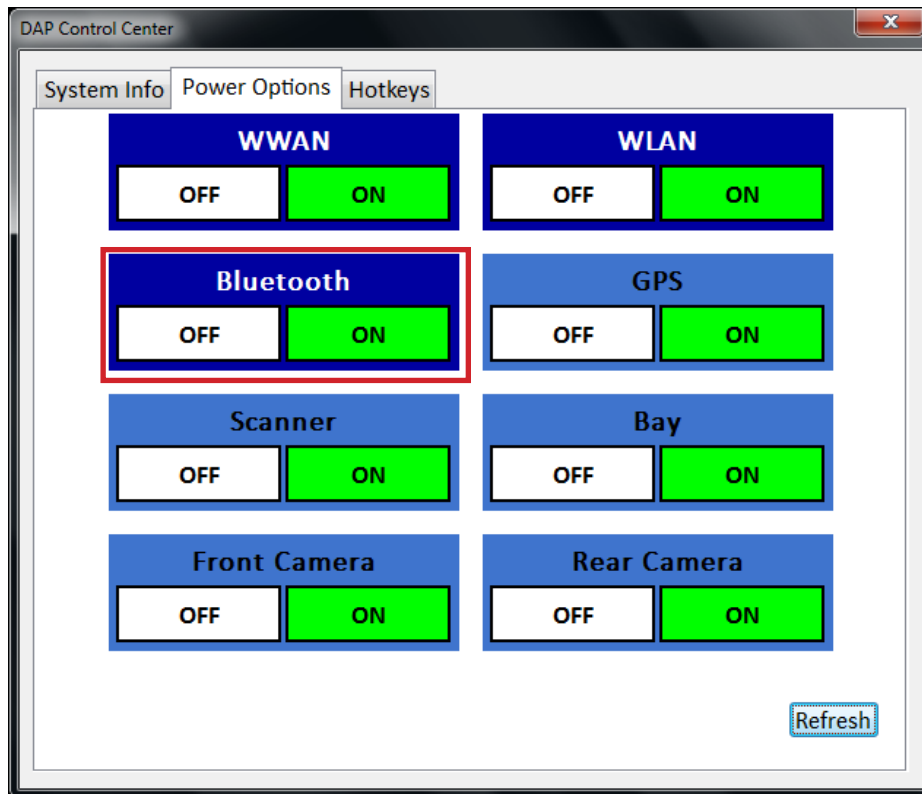
Turning the Bluetooth On and Off

In case you need to turn the Bluetooth on or off, perform the following:

1. Tap **Start > All Programs > DAP Technologies > DAP Control Center**.



2. Select the **Power Options** tab.



3. To turn the Bluetooth on or off, tap **ON** or **OFF** in the corresponding box.

Turning the Bluetooth Adapter On and Off

In case you need to turn the Bluetooth adapter on or off, perform the following:

1. Tap the Bluetooth On (📶) or Bluetooth off (📶) icon on the taskbar.
2. A pop up menu appears. Tap **Turn adapter on** or **Turn adapter off**.



NOTE: If the Bluetooth icon is not shown on the task bar, check that the Bluetooth is activated on DAP Control Center.

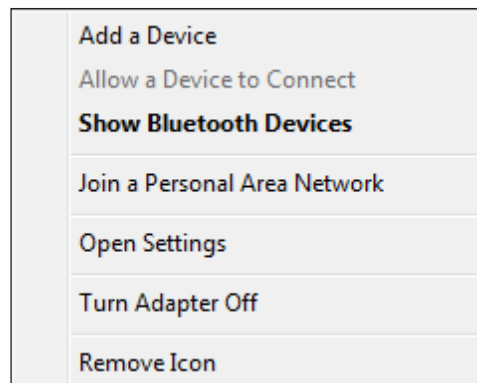
Pairing with Bluetooth Devices

Before you can pair with Bluetooth devices for the first time, you need to add and save the device profile to your M9020.

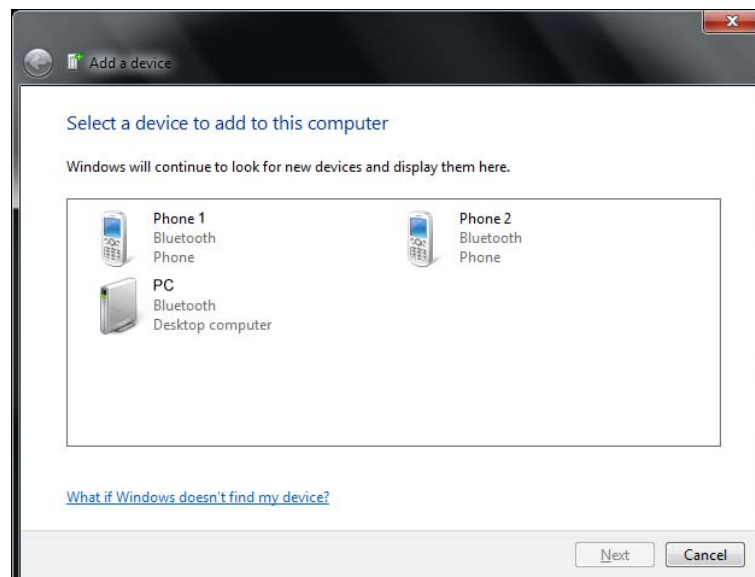
To add and pair a Bluetooth device

Perform the following to pair your M9020 with Bluetooth devices:

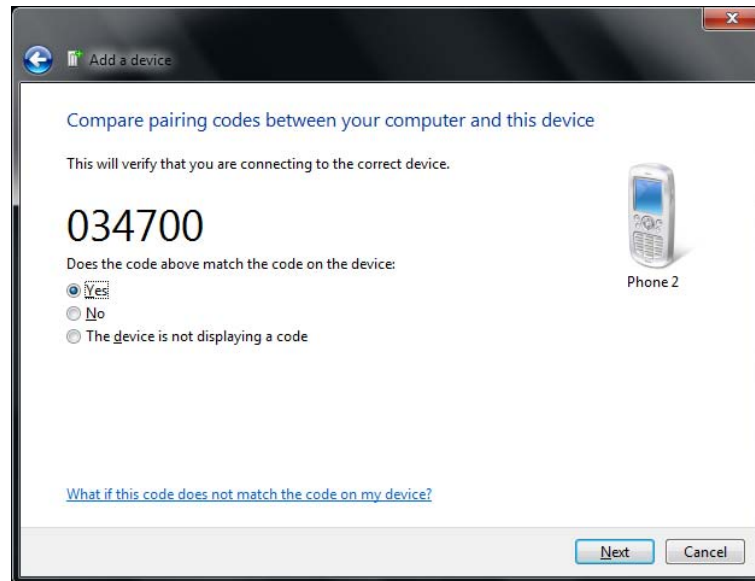
1. Make sure the Bluetooth adapter is on as indicated by the Bluetooth icon () on the taskbar.
2. Tap the Bluetooth icon () to display a pop up menu.



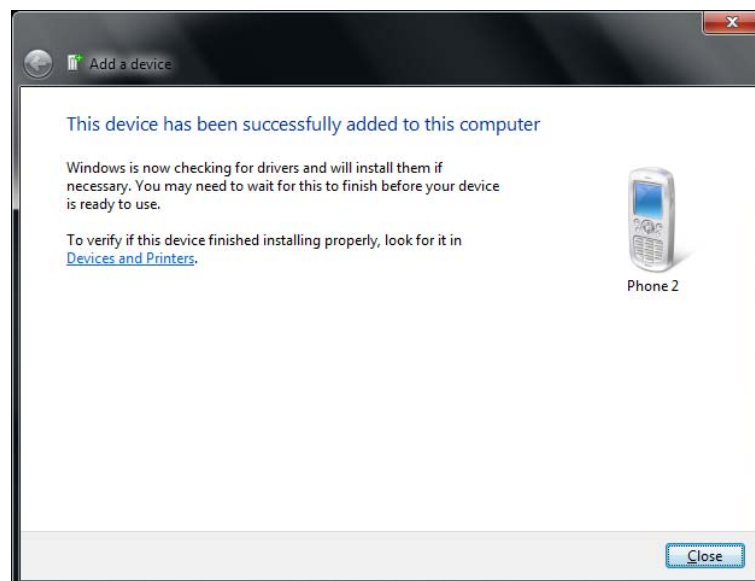
3. Tap **Add a Device**. The M9020 will scan for Bluetooth devices within range.
4. Select the device you want to pair with, then tap **Next**.



- Depending on the device you are pairing with, you may be prompted to enter or verify a pairing code. The pairing code entered or shown on your M9020 must be the same as the one on the Bluetooth device. Click **Next** to continue.



- Windows will check for the device driver and install it, if necessary. Tap **Close** to close the screen.





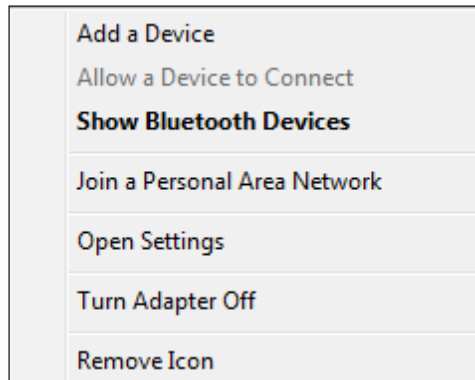
NOTE: For more information on using Bluetooth features, see Windows online help.

To reconnect to a Bluetooth device

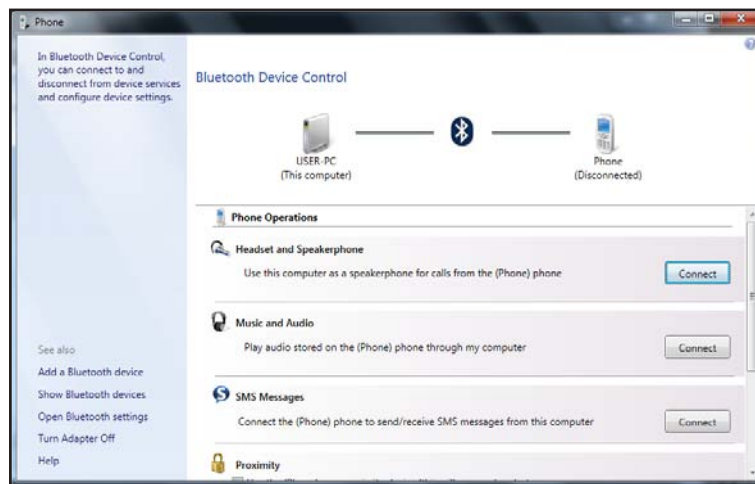
Once a Bluetooth device has been paired with your M9020, you do not need to enter or verify the pairing code as you did the first time.

To reconnect to a Bluetooth device, perform the following:

1. Make sure the Bluetooth adapter is on as indicated by the Bluetooth icon () on the taskbar.
2. Tap the Bluetooth icon () to display a pop up menu.

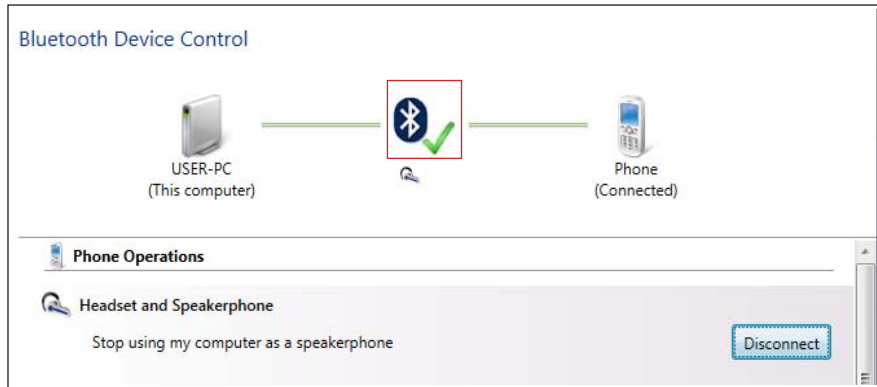


3. Tap **Show Bluetooth Devices**.
4. Double-tap the icon of the desired Bluetooth device. The Bluetooth Device Control screen opens.



- Tap the applicable connection operation (for example, Headset and Speakerphone).

When the connection is established, a “green” check mark appears next to the Bluetooth logo.



Configuring Bluetooth Settings

The Bluetooth Settings allows you to configure how you want to connect to Bluetooth devices, sync data, and other options. To access the settings, open **My Bluetooth**, and then tap **My Bluetooth Settings**.



Tap a menu from the left panel to display the relevant settings on the right.

	Menu	Description
1	General Settings	Configures M9020 name and type, enable visibility, notification options, and enable high speed mode support.

Menu		Description
2	File Transfer Settings	Configures the folder location of incoming files and enable sharing of files with connected Bluetooth devices.
3	Serial Port Settings	Configures virtual serial ports to be used by M9020.
4	Network Settings	Enables networking via Bluetooth connection.
5	Audio Settings	Selects how you want to play audio files through M9020 and enable Skype switching.
6	Language Settings	Selects the Bluetooth interface language.
7	Settings page	Displays the relevant settings to configure. Tap OK to apply changes and close the screen.

Using the WWAN Network

The M9020 has optional WWAN network capabilities that provide wireless connection to the Internet using a SIM card with data subscription.

Connecting to a WWAN Network

Your M9020 comes with Sierra Wireless AirCard® Watcher, an application that allows you to connect to the Internet using your SIM card and keeps you informed of your wireless connection status. Perform the following to connect to your WWAN network:

1. Install a SIM card on your M9020 (see “Installing the SIM Card” on page 1-15).
2. Open the AirCard® Watcher application (tap **Start** > **All Programs** > **Sierra Wireless** > **AirCard Watcher**).

The application detects the SIM card and displays network information on the AirCard® Watcher main screen.



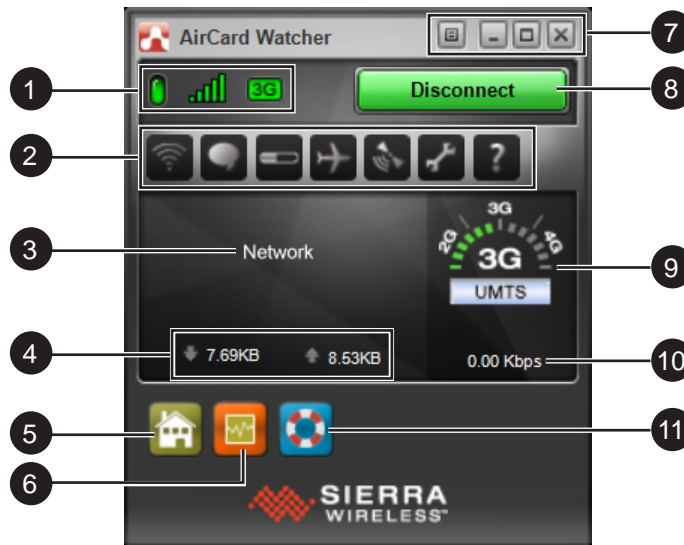
TIP: To open AirCard® Watcher faster, create a desktop shortcut icon. Alternatively, you can set AirCard® Watcher to open and connect automatically with your WWAN network (see “To configure WWAN network profiles” on page 2-21).

3. Tap **Connect** to connect to the WWAN network.











Once connected, the AirCard® Watcher main screen displays the network connection information, such as signal strength, connection speed, and bitrate transfer. For more information on using the application, see “Using AirCard® Watcher” on page 2-18.

Using AirCard® Watcher

The AirCard® Watcher main screen

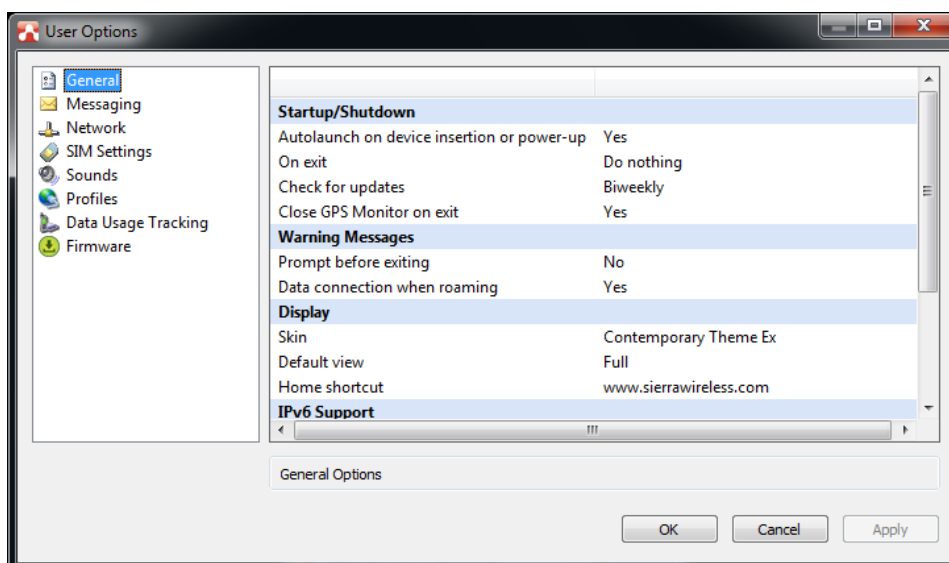


No.	Item	Description
1	WWAN Connection	<ul style="list-style-type: none"> Green: WWAN network is connected. Red: WWAN network is disconnected.
	Signal Strength	<ul style="list-style-type: none"> Green: Indicate the network signal strength. More lit bars indicate stronger signal. Red: No signal.
	Network Type	Indicates the network connection type.
2	Toolbar	Tap an icon to access the function.
	Wireless Profile	Tap to view and modify wireless network profile.
	SMS	Tap to open SMS Express to send and receive SMS messages on your M9020. NOTE: Your data plan subscription must support this feature to be able to send and receive SMS messages on your M9020.
	History	Tap to view the usage history and clear the bitrate counters.
	Airplane Mode	Tap to enable airplane mode. When this feature is enabled, the icon turns red. Tap the icon again or tap Turn Radio On to disable airplane mode.

No.	Item	Description
2	 AirCard GPS	Tap to open AirCard GPS Monitor.
	 Settings	Tap to access the AirCard® Watcher settings. See “Configuring AirCard® Watcher Settings” on page 2-20.
	 Help	Tap to view the help file.
3	Network Name	Displays the name of the SIM card network provider.
4	Data Transfer Rate	Displays the upstream and downstream transfer information.
5	 Home	Tap to open the Sierra Wireless website.
6	 Speed Graph	Tap to show a graphical display of the data transfer speed.
7	 Menu	Tap to access the application menu.
	 Minimize	Tap to minimize the application to the system tray.
	 Restore	Tap to toggle the display between full view and compact view.
	 Close	Shuts down the application.
8	Connect / Disconnect Button	Tap to connect or disconnect from the WWAN.
9	Network Info	A graphical display of the network connection type.
10	Speed	Indicates the network connection speed.
11	 Customer Support	Tap to open Sierra Wireless support website.

Configuring AirCard® Watcher Settings

On the AirCard® Watcher main screen, tap the Settings (⚙️) icon to display the screen below.



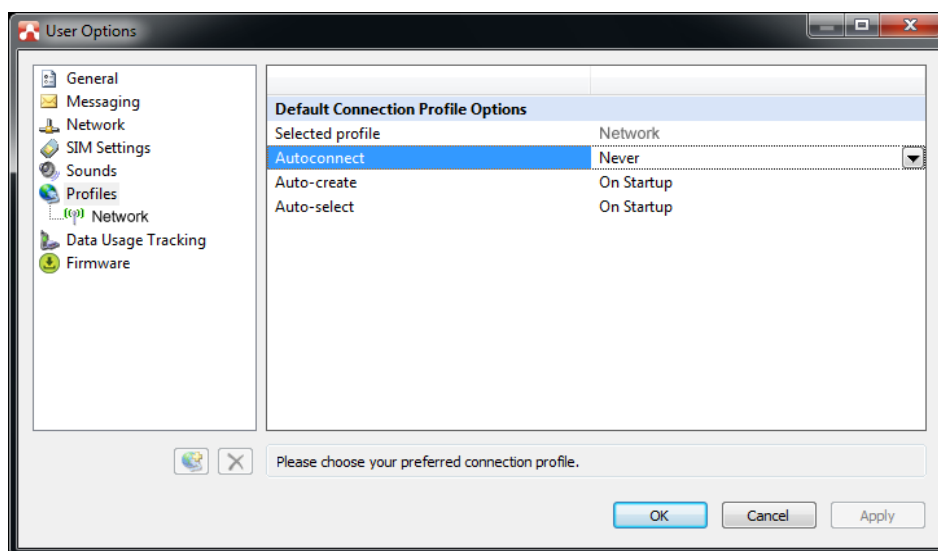
Tap a menu item on the left panel to display the corresponding settings on the right. The following menus are available:

Menu	Description
General	Configures startup/shutdown settings, warning messages, display properties, and others.
Messaging	Configures message settings such as service center number, default storage, and message notification.
Network	Configures network mode and radio technology.
SIM Settings	Enables SIM security settings.
Sounds	Enables sound alert when network is connected, disconnected or when a new message is received.
Profiles	Configures network profiles and auto-connect functions. See “To configure WWAN network profiles” on page 2-21.
Data Usage Tracking	Enables data usage tracking and configures data subscription rate plan settings. This feature helps manage and control internet usage when you have a subscription plan with a limited data rate
Firmware	Displays firmware information.

To configure WWAN network profiles

Once a SIM card is used in your M9020, its network profile is created. You can view network information, such as profile name, access point name (APN), TCP/IP settings, and more. You can also set AirCard® Watcher to automatically connect to the WWAN at startup.

1. On the AirCard® Watcher main screen, tap the Wireless Profile (📶) icon.



2. On the **Profiles** menu, the following items are displayed:
 - **Selected profile:** Displays the name of your WWAN network.
 - **Autoconnect:** Tap the field and then select one of the following:
 - Never: Do not auto-connect to network.
 - While not roaming: Automatically connects to network while within the local network coverage.
 - Always (even when roaming): Automatically connects to network even when roaming outside the local network coverage.

NOTE: Connecting to your network while roaming may incur additional charges. Check with your service provider for details.

- **Auto-create:** Tap to automatically create a connection profile when using a new SIM card.
 - **Auto-select:** Tap to automatically select the best connection profile for the current SIM.
3. Tap **Apply** to save the settings.
 4. To configure specific parameters related to your connection, tap the network name on the left panel.
 5. Tap **OK** to close the screen.

Using GPS

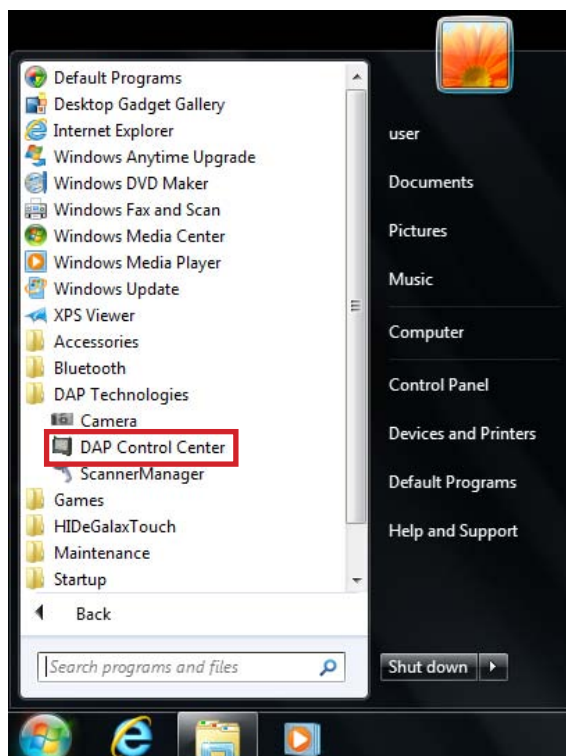
Your M9020 is equipped with GPS (Global Positioning System) capabilities to determine your location and aid in the presentation and analysis of GPS information.

Before using the GPS, make sure the GPS radio is enabled on 'DAP Control Center' and on 'Location and Other Sensors'. See more information below.

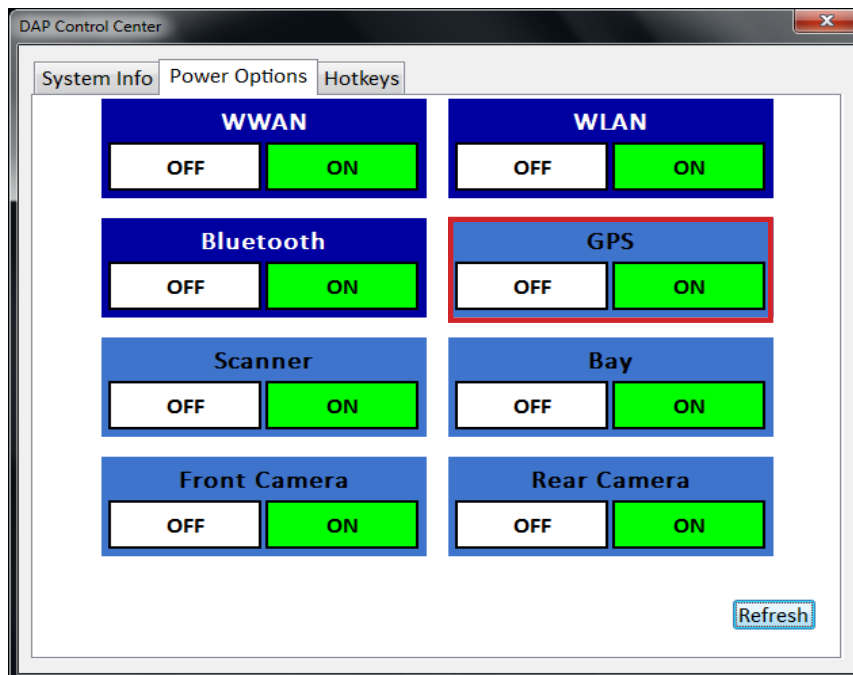
Turning the GPS On and Off

In case you need to turn the GPS on or off, perform the following:

1. Tap **Start > All Programs > DAP Technologies > DAP Control Center**.



2. Tap **Power Options** tab.



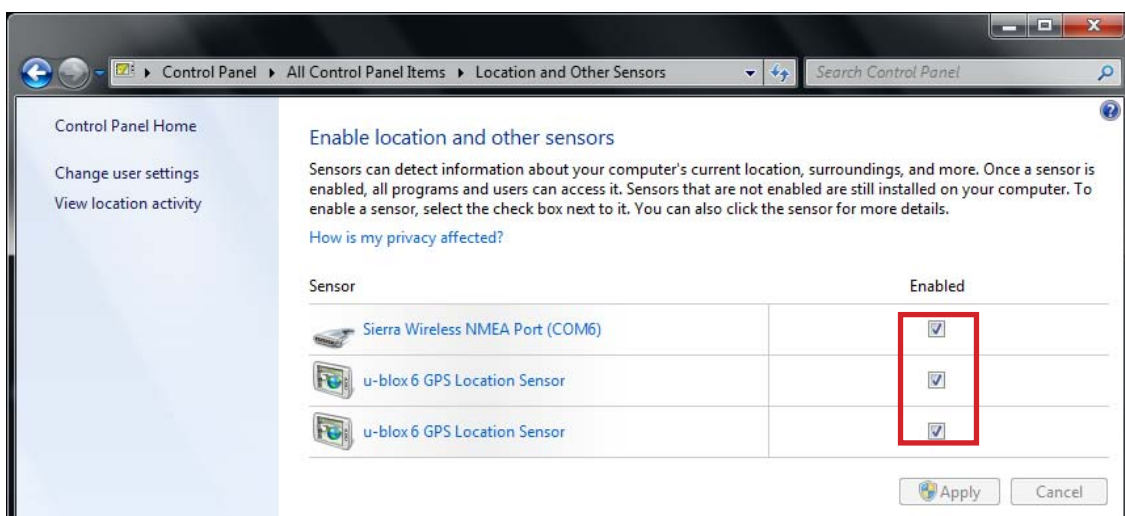
3. To turn the GPS on or off, tap **ON** or **OFF**.

Enabling the Location Sensors

The M9020 is equipped with the **u-blox 6 GPS Location Sensor**. By default, this location sensor is enabled.

Perform the following to enable the location sensors:

1. On Windows desktop, tap **Start > Control Panel > Hardware and Sound > Location and Other Sensors**.



2. To enable/disable the sensors, use the check boxes.
3. Tap **Apply** to save and apply the changes.

Using u-center

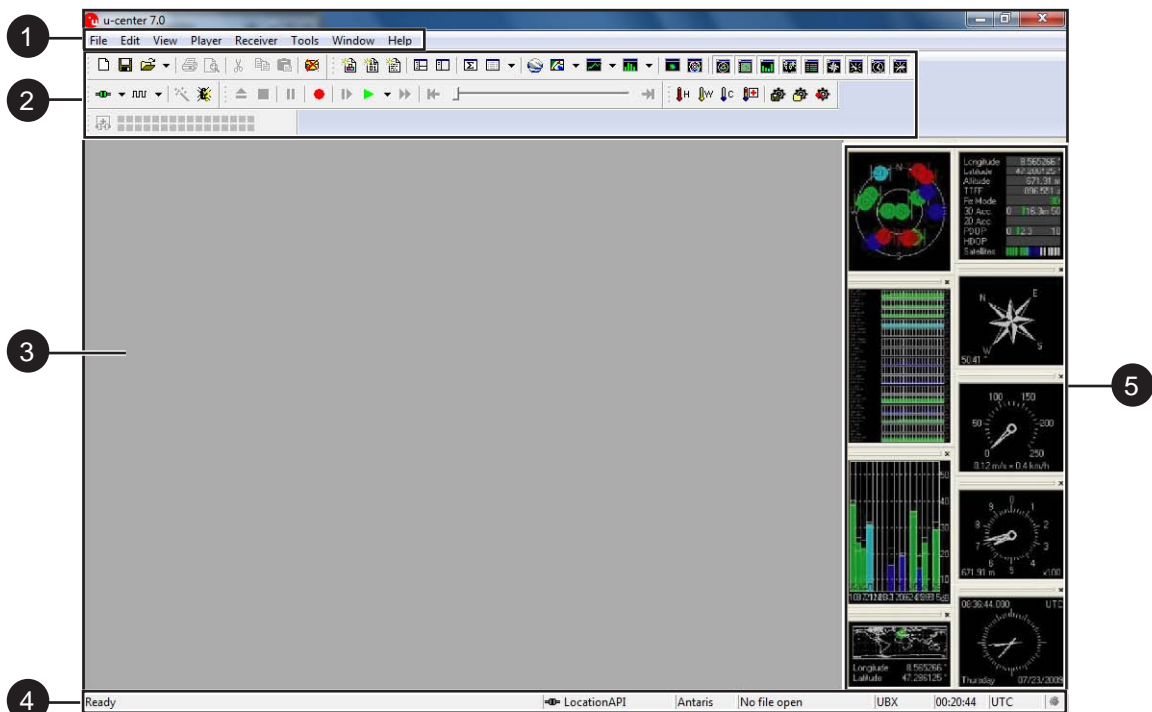
u-center is an application that displays position accuracy, road test position and trajectory, satellite tracking, time to first fix, etc. All processed data can be saved in ASCII format and opened using popular spreadsheet applications.

To open **u-center**, perform one of the following:

- Double-tap the **u-center** desktop shortcut icon.
- Tap **Start > All Programs > u-blox > u-center > u-center**.

The u-center Main Screen

If the GPS receiver is working correctly, the main screen displays the satellite position and level, data, altitude, compass, speed meter, etc.



No.	Item	Description
1	Menu Bar	<p>Consists of eight menu items:</p> <ul style="list-style-type: none"> • File: Allows you to create, save, open, close a log file or clear a database. • Edit: Allows you to copy, paste, delete or select text or set of information. • View: Allows you to open console windows, view maps, charts, camera, and select toolbars to display on the main screen. • Player: Allows you to record and play a log file. • Receiver: Allows you to configure the receiver settings, such as port, baudrate, sensor, network connection settings, etc. • Tools: Allows you to update the firmware and set application preferences. • Window: Allows you to select the layout of your workspace. • Help: Allows you to view help files.
2	Toolbars	<p>Provides shortcuts to common tasks by tapping on the icon.</p> <p>TIP: If using a USB mouse, hold the mouse cursor over the button for a few seconds to view the button name. A brief description is also displayed on the status display area.</p>
3	Window Area	Displays maps, console windows, charts and the camera view.
4	Status Display Area	Displays a brief description of the button function, communication information, GPS mode, file in use, operating and UTC time, protocol information, and GPS status.
5	Docking Window	Displays graphical GPS information, such as the satellite position, satellite level, satellite level history, world position, data, altitude meter, compass, speed meter, and watch.

NOTE: For more information on using u-center, see the u-center User Guide in Start > All Programs > u-blox > u-center > u-center User Guide.

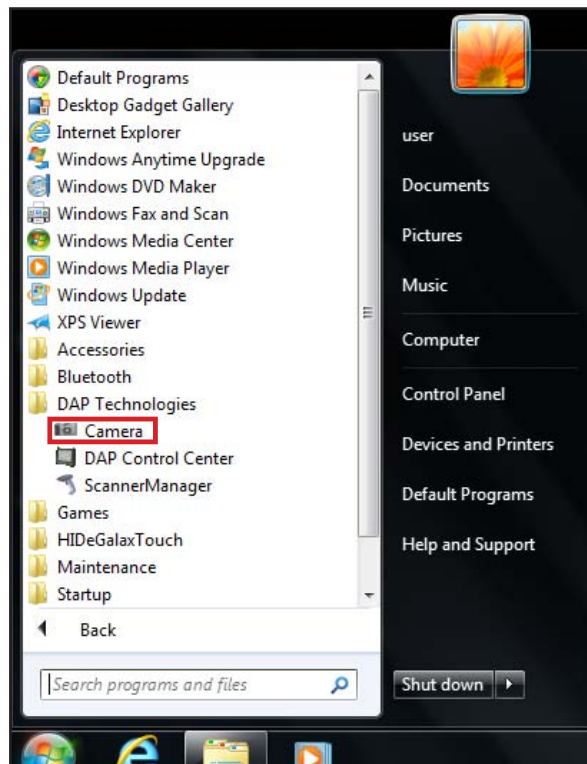
Using the Camera


Your M9020 has integrated front and rear cameras for taking photos.

Opening the Camera

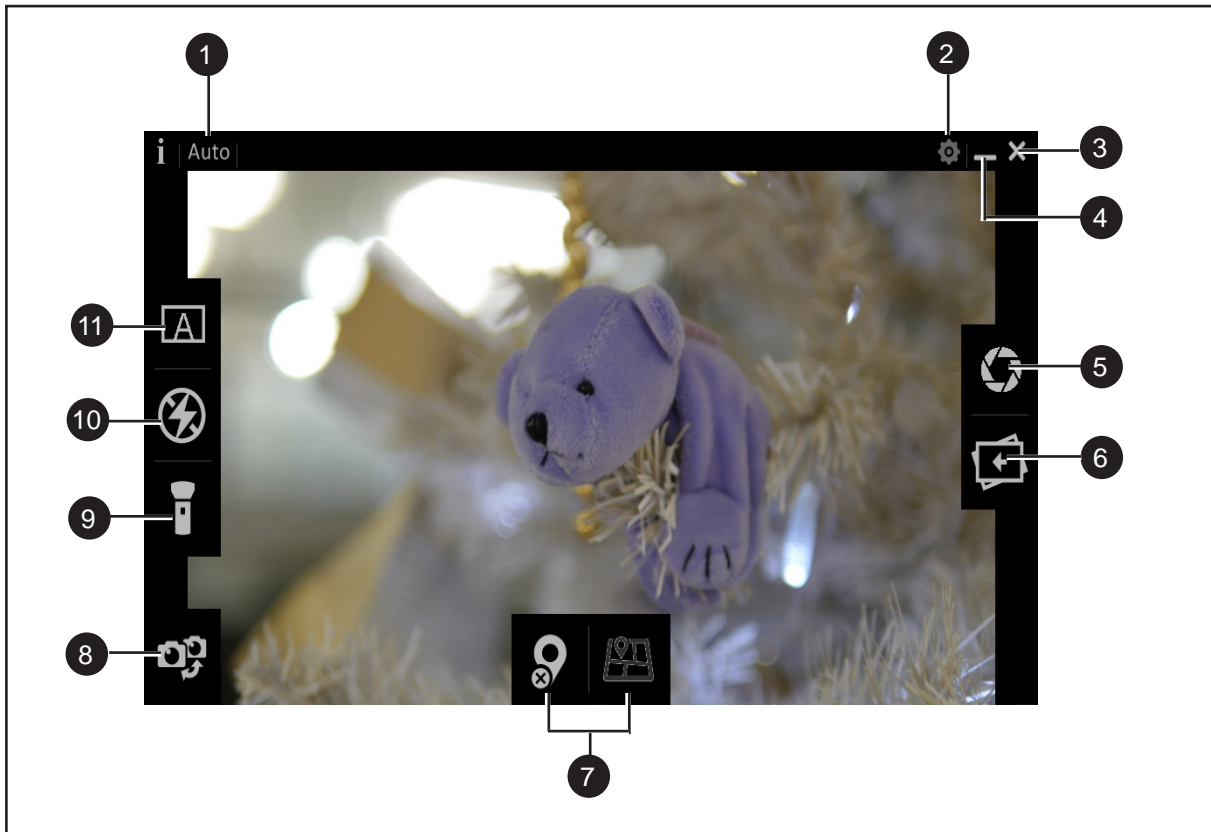
Perform one of the following to open the camera:









- Tap **Start > All Programs > DAP Technologies > Camera**.








- Press the camera shortcut key ()


The Camera Screen



No.	Item	Description
1	Shooting Mode	Shows the shooting mode (by default it is Auto).
2	 Settings	Tap to view the camera settings. See “Camera Settings” on page 2-29.
3	 Exit	Tap to close the camera screen.
4	 Minimize	Tap to minimize the camera screen.
5	 Shutter	Tap to capture a photo.
6	 Open the Photo	Tap to open the captured photo.
7	 /  Positioning	Tap to add/remove the GPS-based location information on the photo (disabled by default).
8	 Switch	Tap to switch between front camera and rear camera.




No.	Item	Description
9	 /  Flashlight	Tap to activate/deactivate the flashlight function (deactivated by default).
10	 /  Flash	Tap to enable/disable flash (disabled by default).
11	 Shooting Mode	The only shooting mode available on the M9020 is automatic.

Shooting Photos

1. Open the camera (see “Opening the Camera” on page 2-26).
2. Focus on your subject.
3. Tap  to capture the photo.
4. By default, the photo preview is briefly shown on the screen.



The preview screen automatically closes after 3 seconds. Do one of the following:

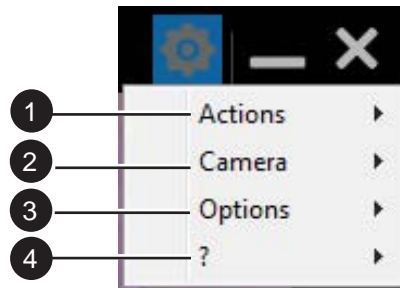
- Tap  to capture the next image.
- Tap  to see the image in Windows Photo Viewer.
- Tap  to close the camera screen.

NOTE:


By default the system automatically creates a folder with the current date to the logged in user's Pictures folder, and saves the images into that folder. For example, C:\Users\My Name-PC\Pictures\2013-12-16.

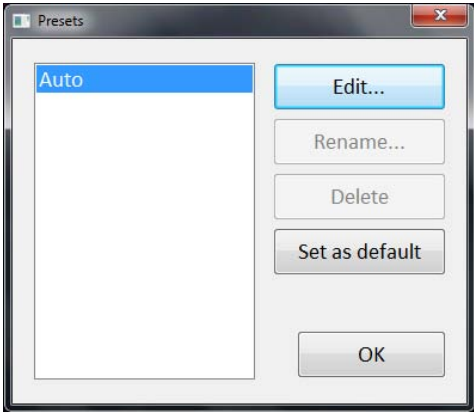
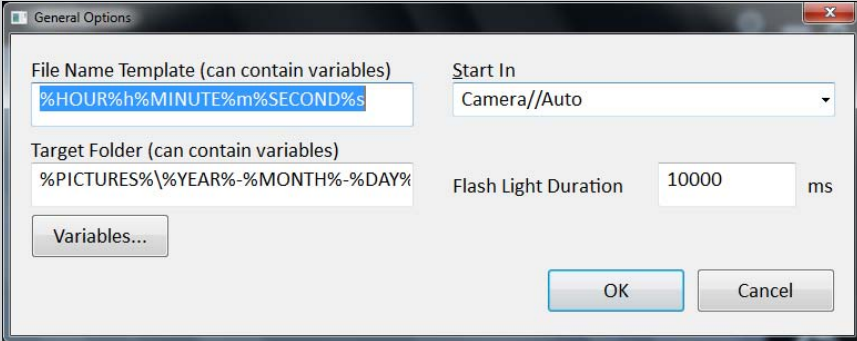
Camera Settings

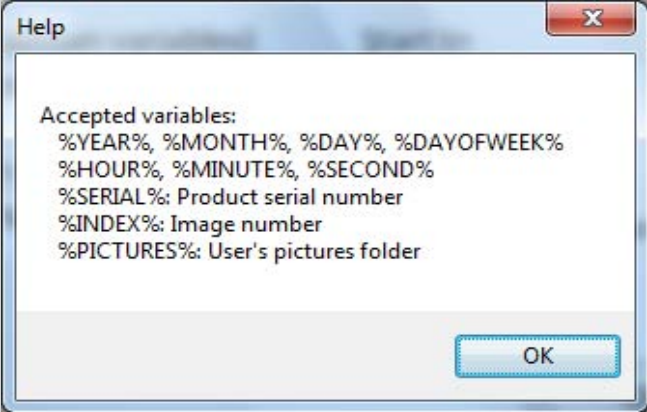
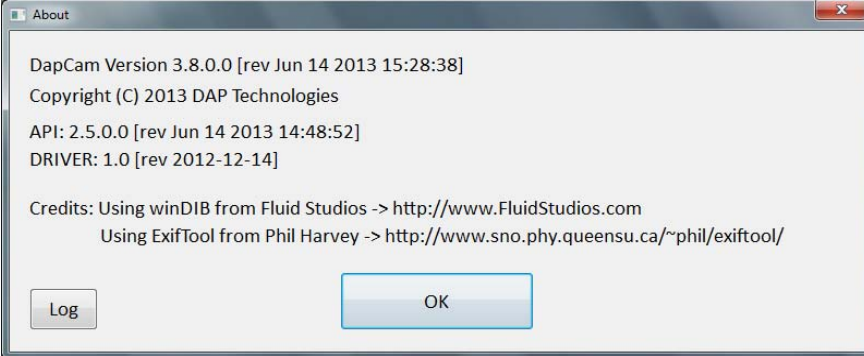
1. Tap  to open the settings pop-up menu.






2. Modify the necessary settings.

No.	Item	Description
1	Actions	<ul style="list-style-type: none"> • Capture: Tap to capture an image. • Show Image Folder: Tap to open the image folder.
2	Camera	<ul style="list-style-type: none"> • Advanced Settings...: Tap to open the Preset Configuration page. On this page you can modify parameters such as the default picture resolution, brightness, flash and white balance of the camera. Tap on the parameter and select the desired value. After all modifications are done, tap Set to save changes. Tap  to close the page. <div data-bbox="724 1265 1197 1845" data-label="Image"> </div>

No.	Item	Description
2	Camera	<ul style="list-style-type: none"> • Edit Presets...: Tap to open the Presets page. On this page you can configure the default parameters of Auto shooting mode. Tap on the mode and then tap Edit.... You can also set the mode as a default mode, by selecting a mode and clicking on Set as Default. Tap OK to save changes and exit the page. 
3	Options	<ul style="list-style-type: none"> • General...: Tap to open the General Options page. On this page you can define the file name template, target image folder location, start in mode and flash light duration. When all modifications are done, tap OK.  <p>Please note that you can use variables, to automate the image naming and image folder location and naming. Click the Variables... button for more details on variable names.</p>

No.	Item	Description
3	Options	 <p>Tap OK to return General Options page.</p> <ul style="list-style-type: none"> • Export Configuration...: Tap to select the location where you want to save the configuration parameters. The parameters are saved in XML format.
4	?	<ul style="list-style-type: none"> • About: Tap to see the camera application information page. Tap OK, to return to the camera screen. 

3. When settings are complete, do one of the following:

- Tap  to capture an image.
- Tap  to see the image in Windows Photo Viewer.
- Tap  to close the camera screen.

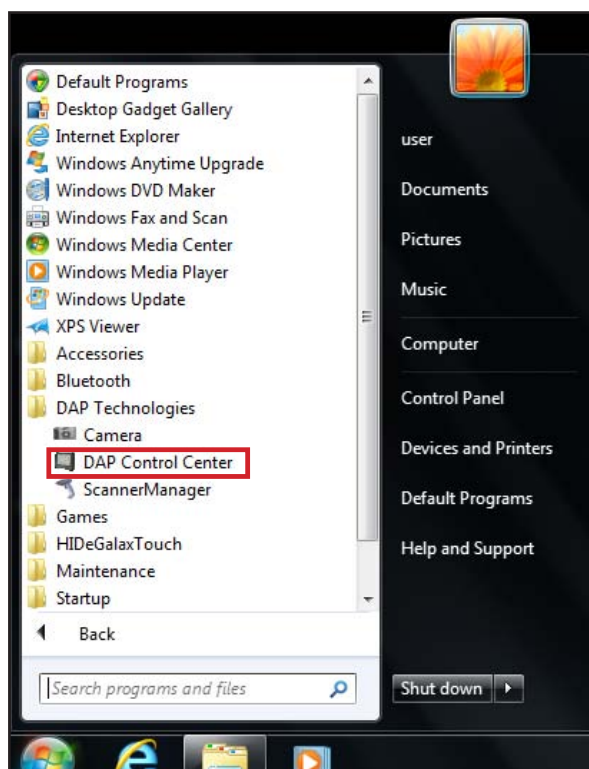
Using the DAP Control Center

Your M9020 has a control center for viewing system information, setting power options and defining hotkeys.

Opening the DAP Control Center

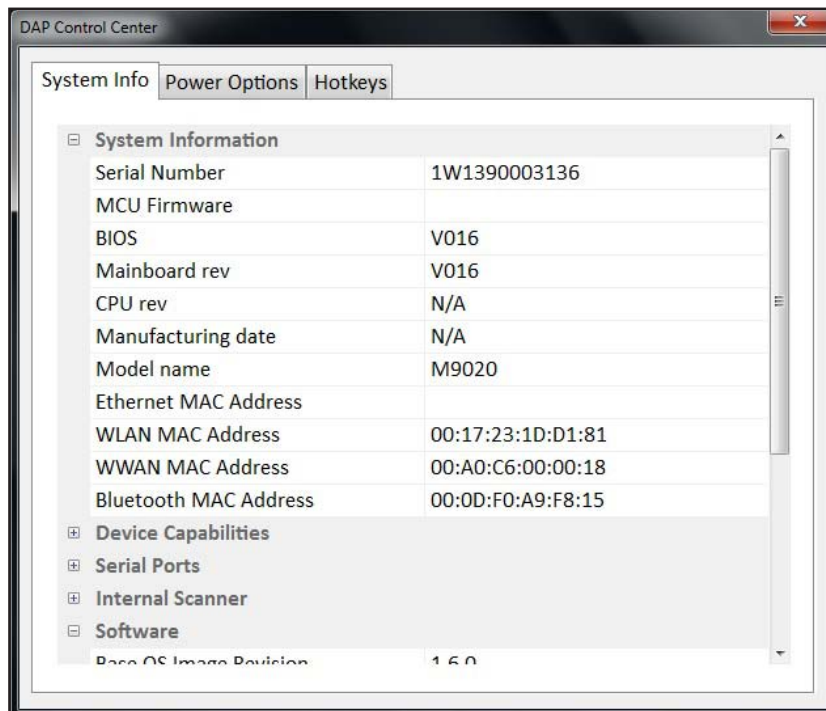
Perform the following to open the DAP Control Center:

- Tap **Start > All Programs > DAP Technologies > DAP Control Center**.



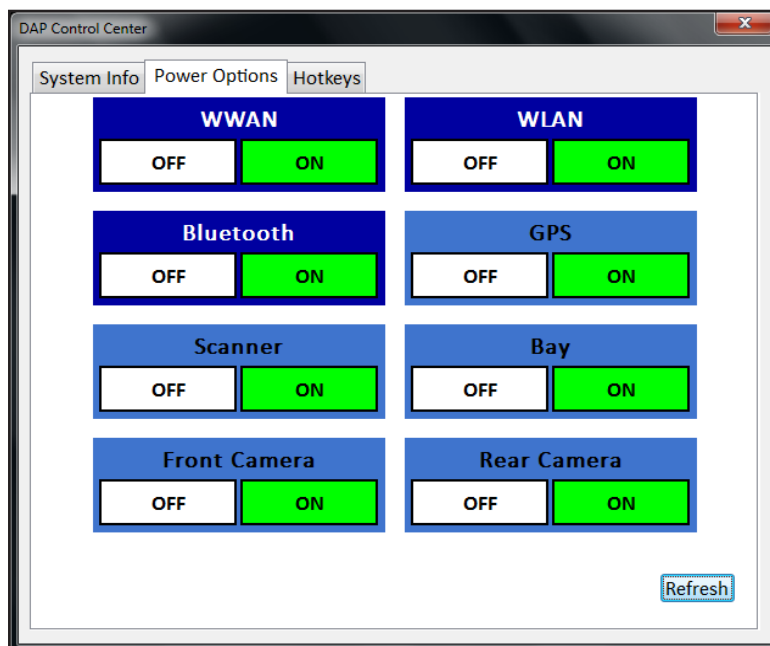
Viewing System Information

General system information is displayed in the **System Info** tab on DAP Control Center.



Setting Power Options

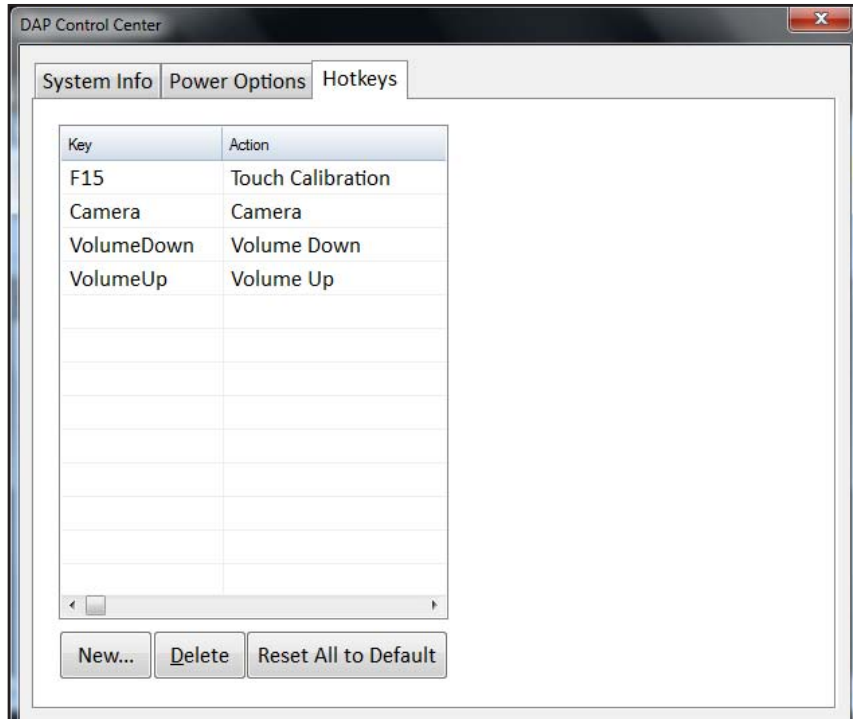
Tap the **Power Options** tab to control the power state of features such as the WWAN, WLAN, Bluetooth, GPS, Scanner and Cameras.



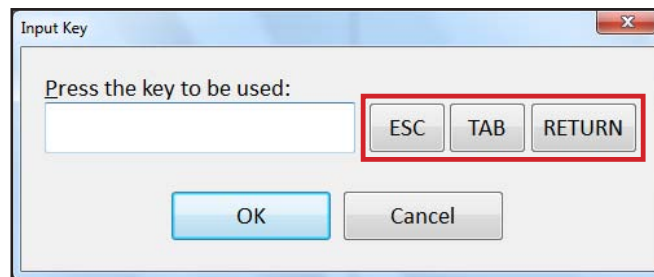
Defining Hotkeys

To define hotkeys, do the following:

1. Tap on **Hotkeys** tab. The Hotkeys page opens.



2. Tap **New...** (). The Input Key window opens.



3. Type the key or key combination that will be defined as a hotkey. To assign a hotkey to the **ESC** (Escape), **TAB** (Tabular) or **RETURN** (Enter) keys, use the corresponding buttons. Tap **OK** to confirm.

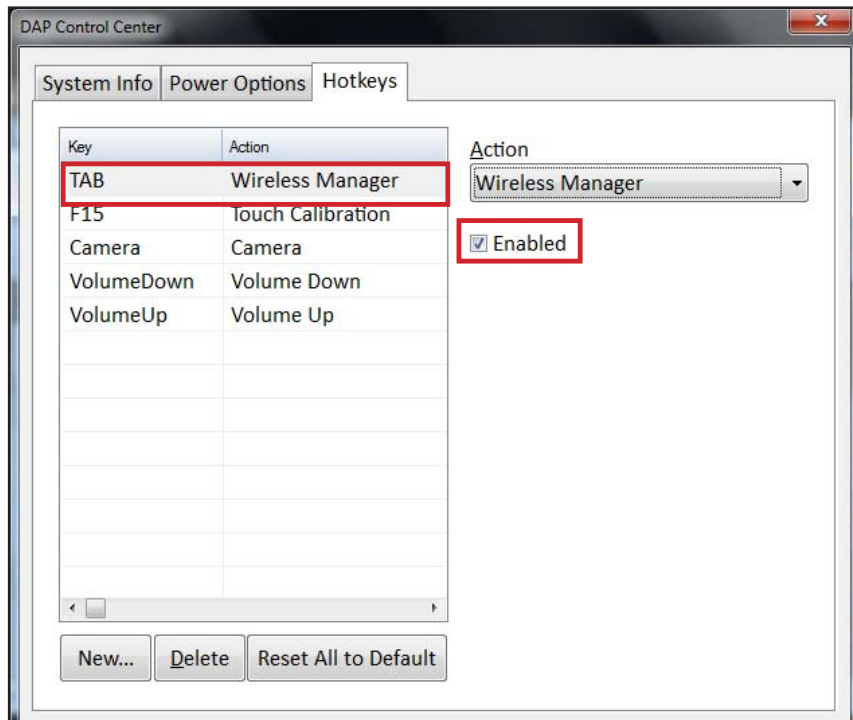
The selected hotkey appears in the table on the Hotkeys page.


4. To assign an action to a hot key, select it on the list and then tap the Action field. A list of actions is displayed on the screen. Select the desired action from the list.

NOTE:

To activate the hotkey, make sure the **Enabled** checkbox is checked.

In the following illustration, the **TAB** key is assigned to open the Wireless Manager.



5. After the hotkey is assigned, do one of the following:
 - Tap **New**, to assign the next hotkey. Repeat steps from 1 to 4.
 - Select the key and tap **Delete**, to delete the hotkey assignment.
 - Tap **Reset All to Default**, to restore the default configuration.
 - Tap  to close the Hotkeys page.

Using the Barcode Reader

Your M9020 has a built-in barcode reader which is a 2D imager that you can use to scan barcodes.

NOTE:

- The built-in barcode reader is an optional accessory.
- Alternatively, you can also use a Bluetooth scanner or connect an external barcode scanner to the USB or RS-232 ports.

Perform the following to scan barcodes using the built-in barcode reader:

1. Press and hold the barcode button (|||||) to activate the barcode reader. The barcode reader lights red.
2. Point the beam to the barcode label. The device emits a beep sound when the barcode is read properly.



CAUTION:

- DO NOT aim the barcode scanner into the eyes. It may severely damage the eyes or may cause blindness if pointed directly into eyes.

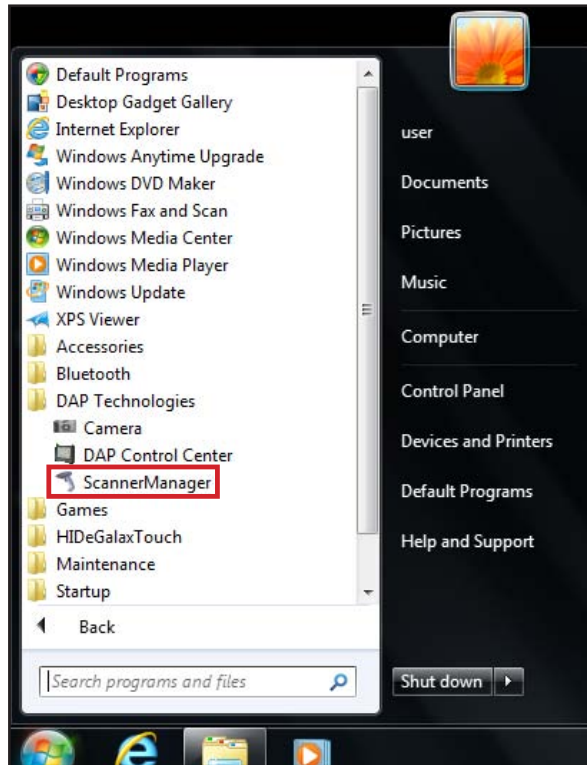
Using ScannerManager

The ScannerManager allows you to see the status and configure the settings of the Internal Scanner, Tethered Scanner, and Bluetooth Scanner.

Opening the ScannerManager

Perform one of the following to open the ScannerManager application::

- Tap **Start > All Programs > DAP Technologies > ScannerManager**.

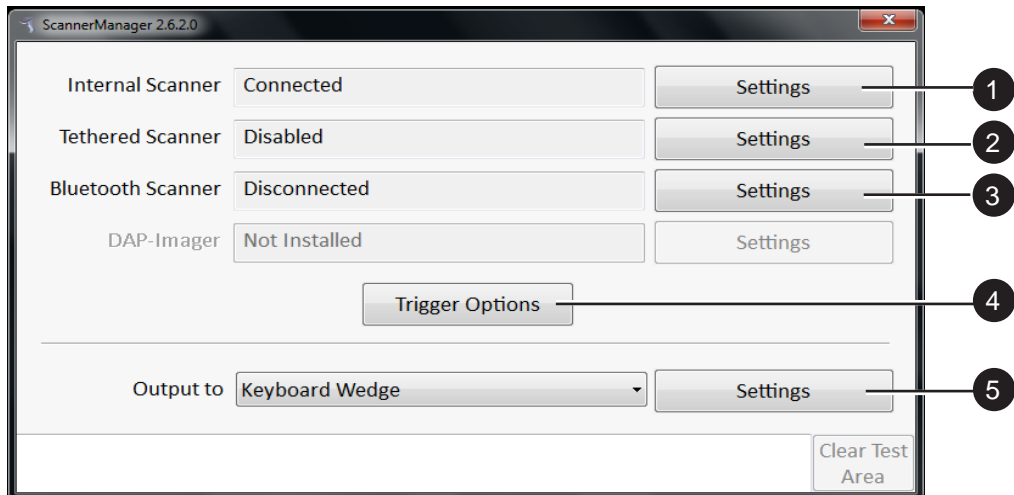


- Press the ScannerManager shortcut key () icon on the taskbar.



Using the ScannerManager

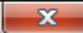
1. Open the ScannerManager, see “Opening the ScannerManager” on page 2-37. The settings main page opens on the screen.



No.	Item	Description
1	Internal Scanner	By default the inner scanner is enabled and connected. Tap Settings , to modify the decoder properties, import/export parameters, or disable the internal scanner. Tap OK to return to the ScannerManager main page.
2	Tethered Scanner	By default the tethered scanner is disabled. Tap Settings to enable this scanner and do modifications to the serial link connection parameters. Tap OK to return to the ScannerManager main page.
3	Bluetooth Scanner	Tap Settings to configure the Bluetooth scanner connection parameters. See “Working With Bluetooth Scanners” on page 2-40. Tap OK to return to the ScannerManager main page.

No.	Item	Description
4	Trigger Options	By default, when you press the barcode button (), the barcode scanner activates. Tap Trigger Options if you want to remove or assign the barcode scanner a different shortcut key. Tap OK to return to the ScannerManager main page.

No.	Item	Description
5	Output to	a) Select where to direct the barcode scanning output. The available options are as follows: - Keyboard Wedge - Link*One - SDK. b) Tap Settings to modify the selected output configuration.

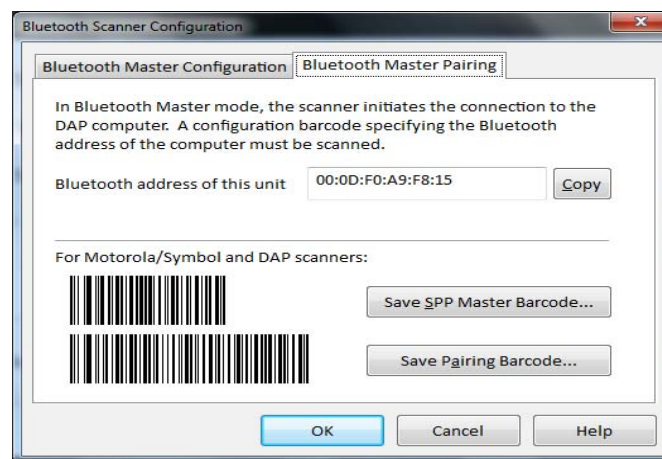
- When the modifications are done, tap  to close the ScannerManager page.

Working With Bluetooth Scanners

Scanner Manager recognizes Bluetooth scanners that are in master mode. This means that the scanner initiates the connection. In order to do that, it must have a way to know which unit to connect to.

Scanner manufacturers explain how to proceed to configure and pair their devices in their documentation. Usually, the user must create a special barcode based on the Bluetooth MAC address of the computer. Once that barcode has been generated, it does not change. It can be placed on the M9020, and the next time any scanner has to be associated with the unit, an operator simply needs to scan the code and wait the connection to be established automatically.

For DAP and Symbol/Motorola scanners, you can use the Bluetooth Master Pairing tab in the ScannerManager Bluetooth settings as follows:

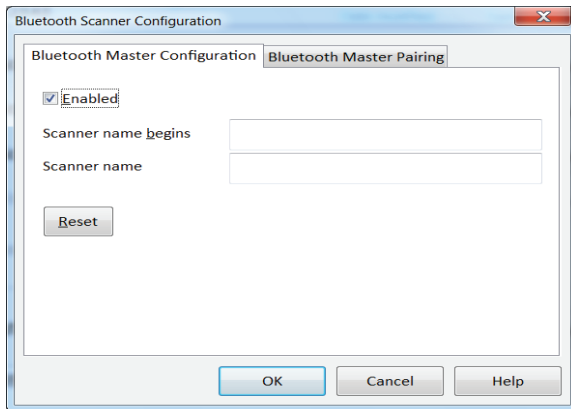


Bluetooth Master Configuration When Using BlueSoleil or the Microsoft BT Stack

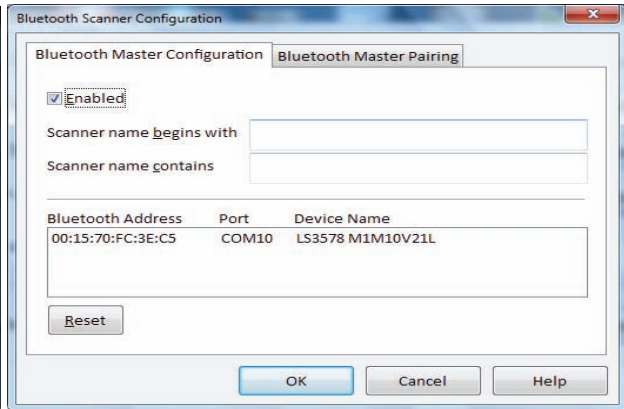
The Bluetooth Master Configuration dialog box allows the filtering of which Bluetooth scanner to accept a connection from. With the default values (empty), the first detected device using the Serial Port Profile (SPP) will be selected. In most cases, this is correct. If you are using more than one SPP devices, change the values to select, for example, only scanners from a given model.

NOTE: The bottom list on “BlueSoleil Installed” illustration presents all the devices using the Serial Port Profile, that are currently connected.

Microsoft Bluetooth Stack



BlueSoleil Installed

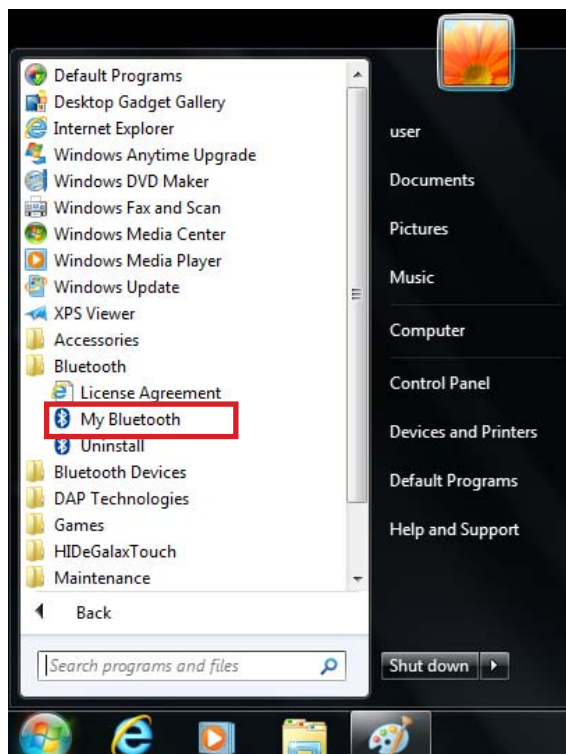


Bluetooth Master Configuration When Using an Incompatible Bluetooth Stack

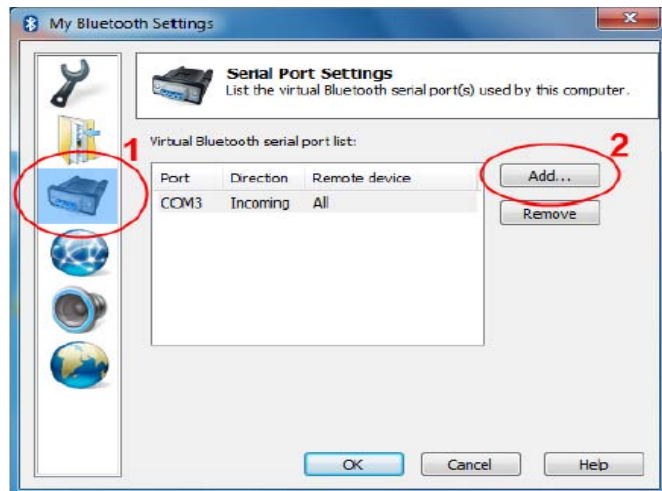
In this situation, the Bluetooth Master Configuration page allows selecting the COM port to use to connect to the scanner. A virtual COM port must be created.

When using Motorola Bluetooth, perform the following, to create a Bluetooth virtual COM port:

1. Tap **Start > All Programs > Bluetooth > My Bluetooth**. My Bluetooth page opens.



2. Tap My Bluetooth. My Bluetooth settings page opens.
3. Tap on the connector (🔌) icon (1). If no virtual COM port is shown, tap Add button and create a virtual port (2).



Creating a virtual COM port is complete.

4. Return to the ScannerManager Bluetooth Master Configuration to complete the scanner connection. See “Using ScannerManager” on page 2-37.